

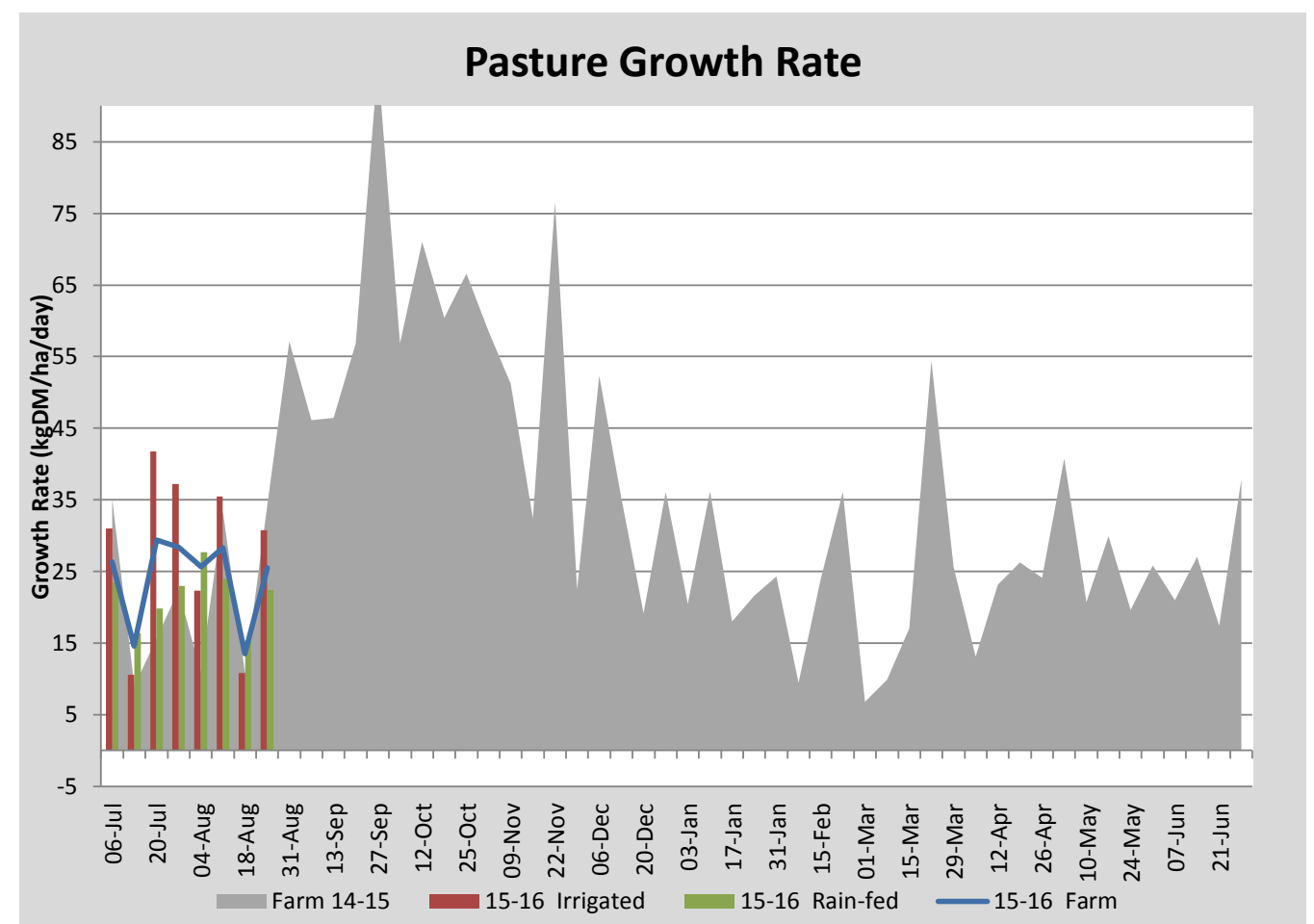
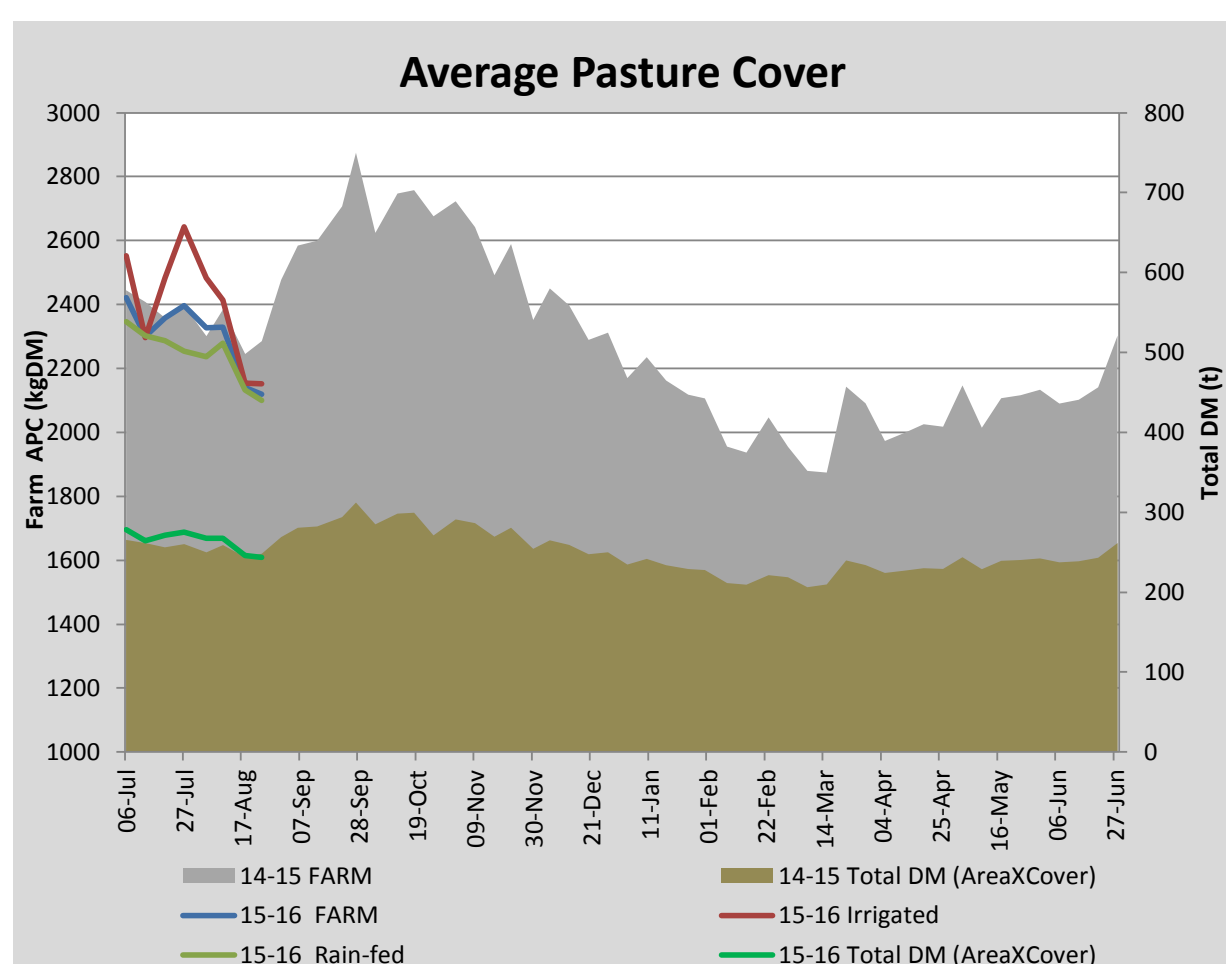
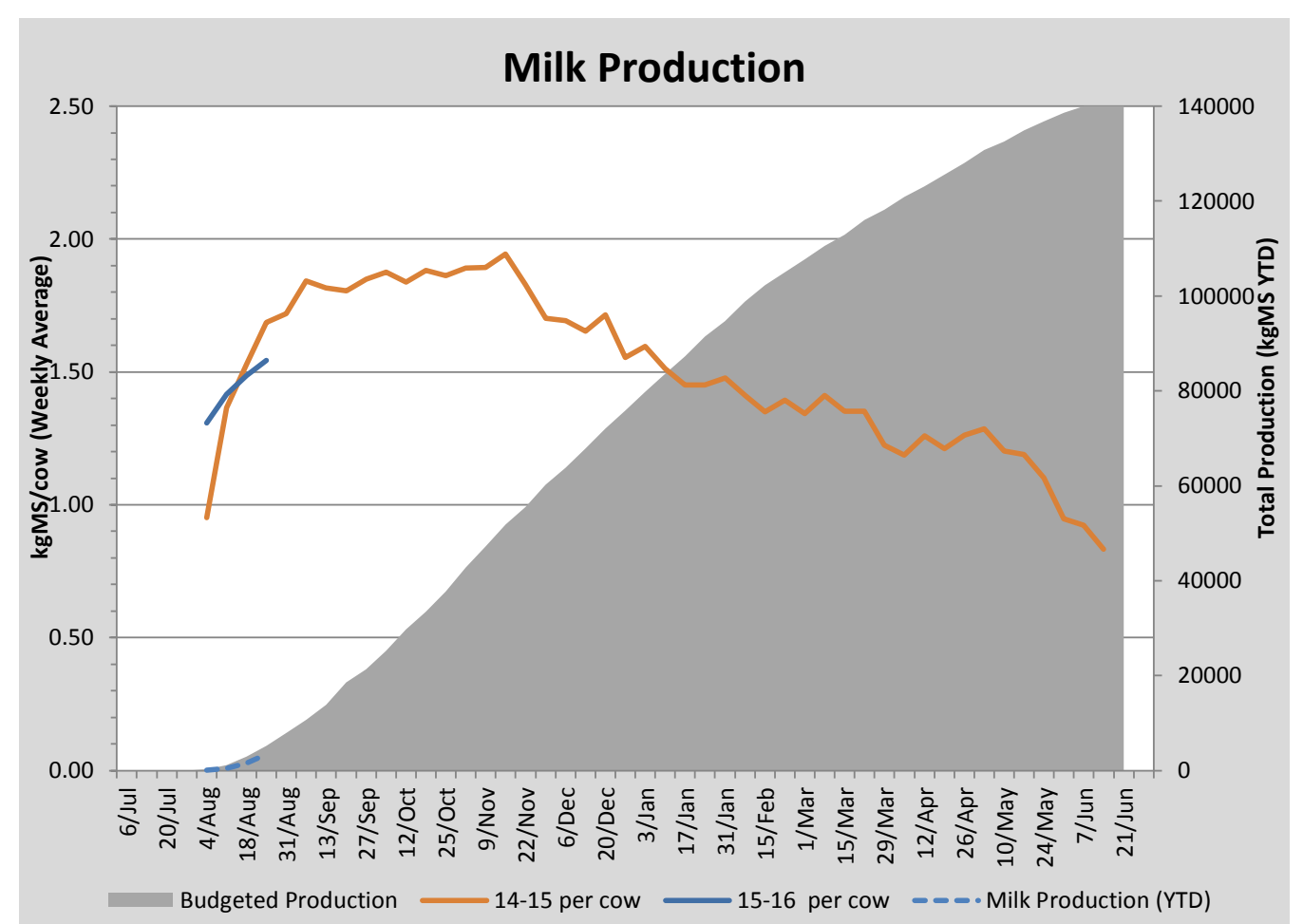
## Key Summary Points

- 1 Average pasture cover dropped slightly this week with pasture demand being slightly higher than current growth rates.
- 2 Calving is progressing well with 230 cows calved to date.
- 3 Focus for the coming week is to monitor cow health (mastitis and calving) and to spray off winter crop ground ready for planting spring pasture.

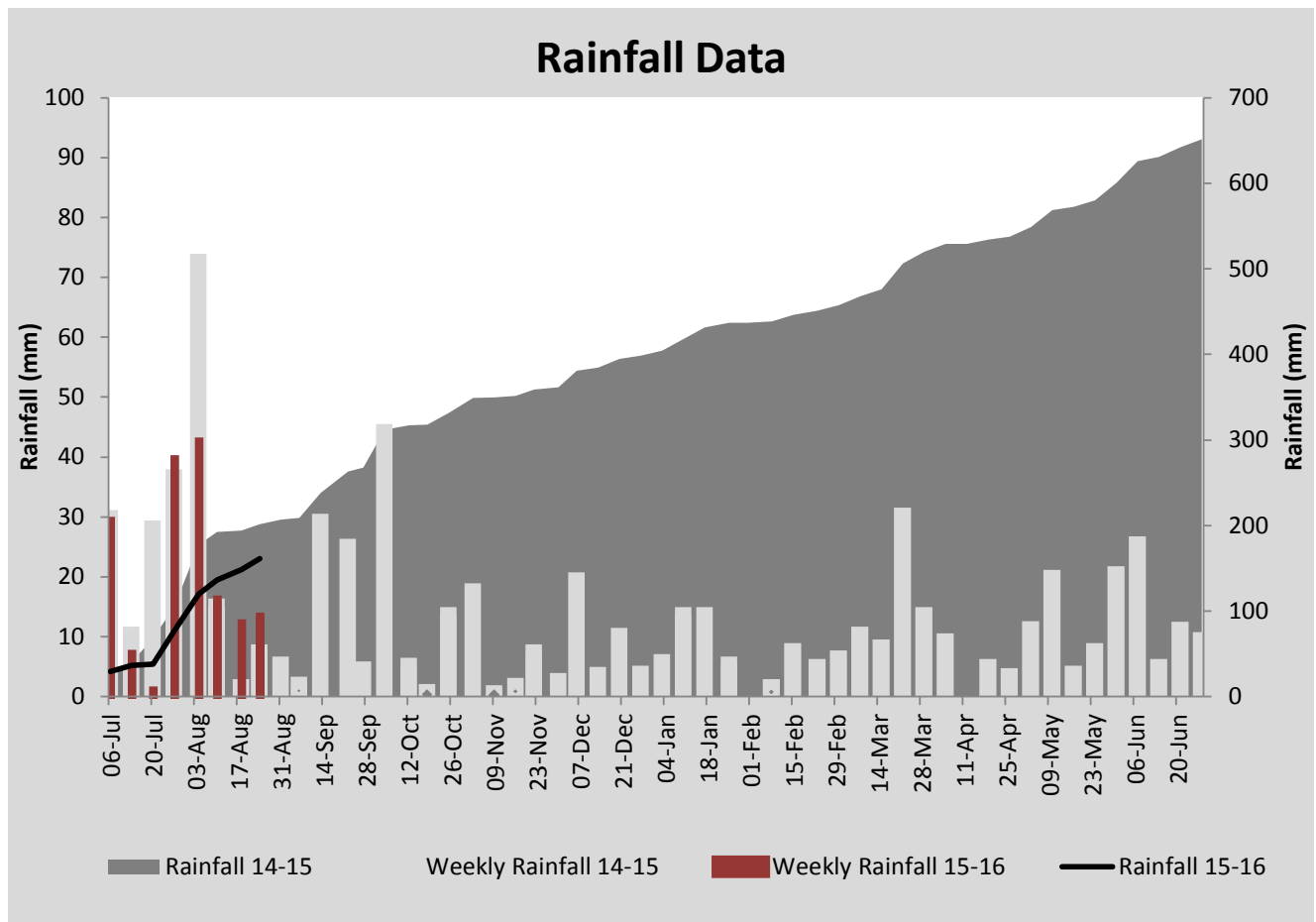
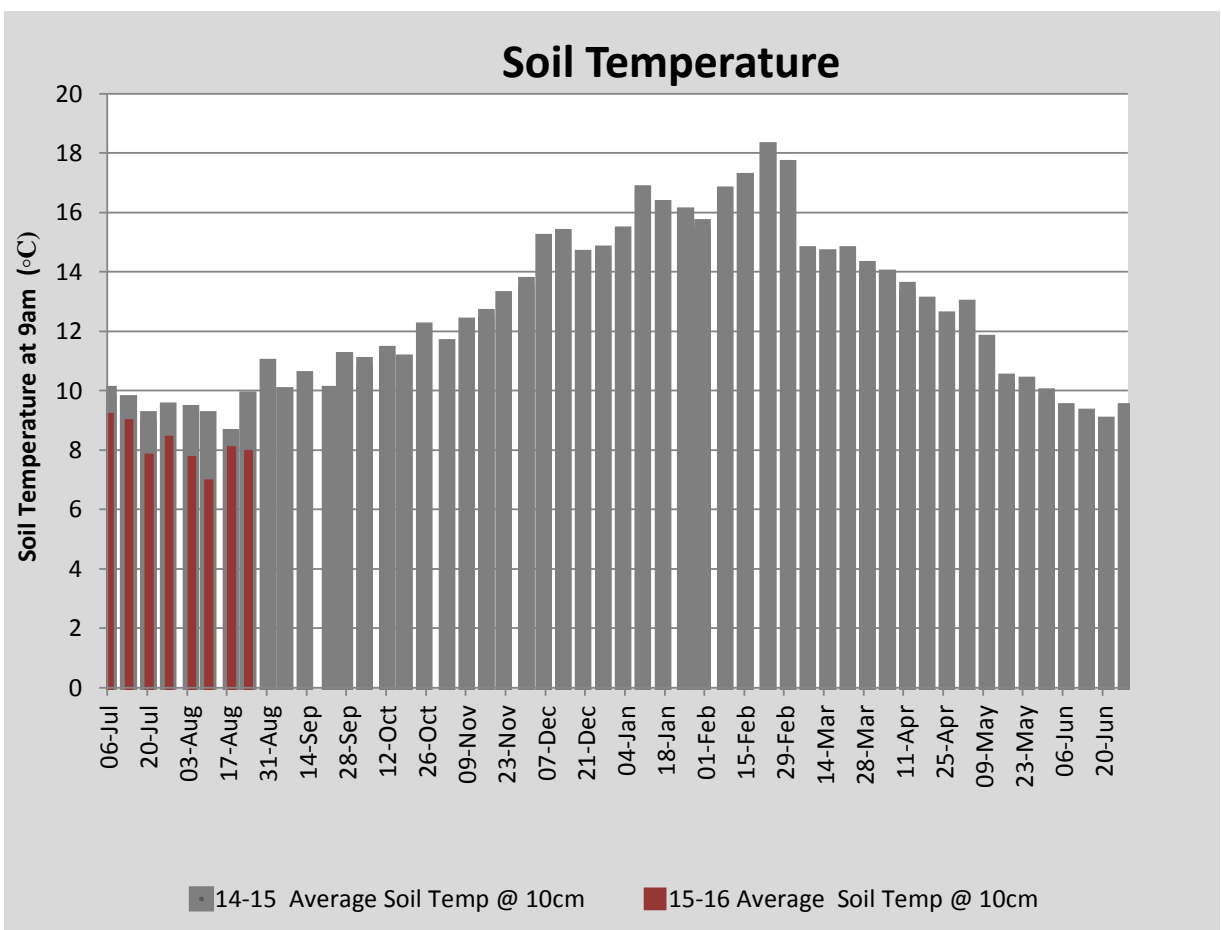
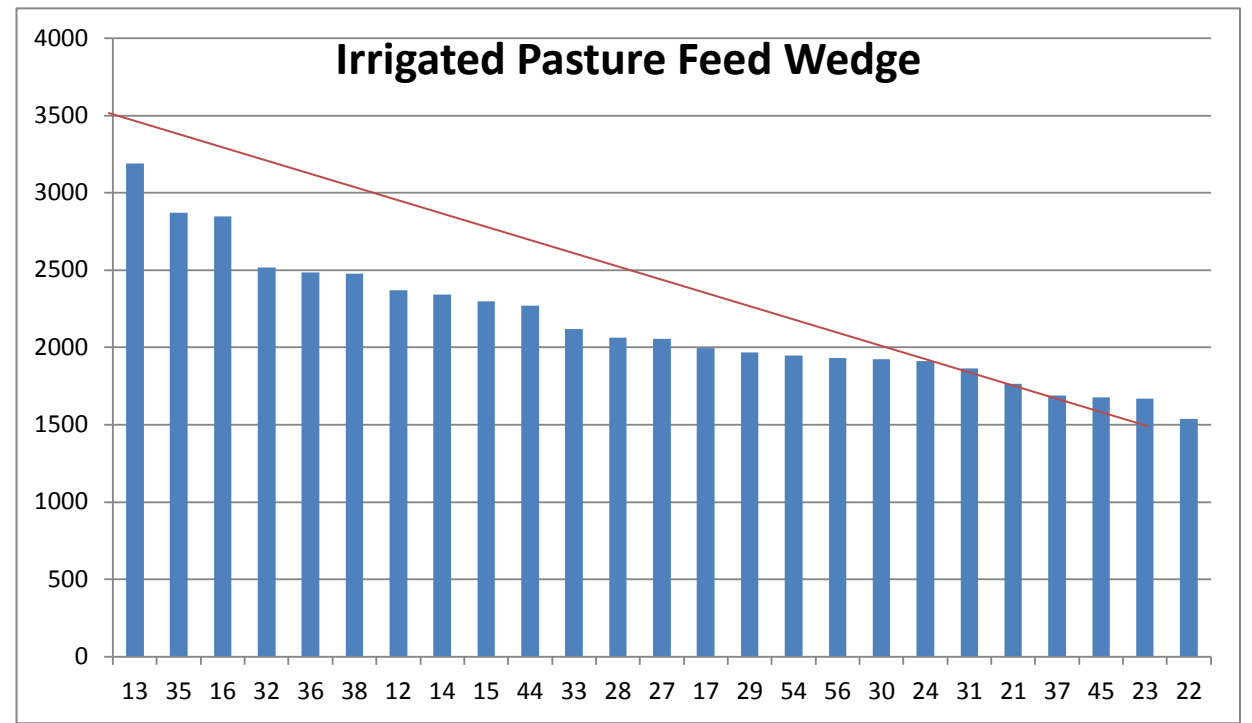
PASTURE INFORMATION	Farm			Irrigated			Rain-fed		
	Last Week	This Week	Variation	Last Week	This Week	Variation	Last Week	This Week	Variation
Grazed milking area (ha)	115.0	115.0	0.0	42.2	42.2	0.0	72.8	72.8	0
Rotation Length (days)	85	49	-35	60	31	-29	110	74	-36
Grazing allocation per day (ha)	1.4	2.3	1.0	0.7	1.4	0.7	0.7	1.0	0.3
Average time since last grazed (days)	83	94	11	87	101	14	80	90	10
Leaf appearance rate (days per leaf)	17	17	0	17	17	0	17	17	0
Average Pasture Cover (kgDM/ha)	2140	2119	-21	2153	2152	-1	2132	2100	-32
Pasture Growth Rate (kgDM/ha/day)	14	25	12	11	31	20	15	22	7
Post Grazing Biomass (kgDM/ha)	1487	1563	76						
Nitrogen applied YTD (kgN/ha)	10	27	17	0	18	18	0	17	17

\*Please note all pasture calculations detailed above are based on the current Grazed Milking Area

MILK PRODUCTION	Last Week	This Week	Variation
Average No. cows in milk (vat)	98	197	99
Litres per cow	18.8	19.5	0.8
% Fat	4.13	4.15	0.02
% Protein	3.78	3.64	-0.14
MS/cow/day	1.49	1.54	0.06
MS/ha/day	1.29	2.69	1.40
BMCC	135800	207600	71800
Average Liveweight (kg)	0	0	0
	Budget	To Date	Variation
Total Milk Production (kgMS)	5,211	3,467	67%
MS/ha YTD	46	3	-42



Last 7 days					
Milkers Diet	kg DM	MJ ME	CP (%)	NDF (%)	\$/cow
Pasture Intake	11.4	13.3	28.0	40.7	0.0
Concentrates	4.0	12.5	16.0	16.5	0.0
Silage	3.6	11.5	15.0	49.0	0.0
Grazed forage	0.0	0.0	0.0	0.0	0.0
Other feeds	0.0	0.0	0.0	0.0	0.0
<b>Total</b>	<b>19</b>	<b>243.1</b>	<b>23.0</b>	<b>37.2</b>	<b>0</b>
<b>Target</b>		<b>191</b>	<b>16-18</b>	<b>&gt;33</b>	<b>0</b>



Analysis			
Expected growth rate next 7 days (kgDM/ha/day)	25	Target Leaf Grazing Stage	2.5-3.0
Total Demand from Pasture (kgDM/ha/day)	24	Predicted APC 7 days time	2125
APC balance (kgDM/ha/day)	1	Predicted APC Change	6.0

## Discussion

Average pasture cover decreased this week to 2119kgDM/ha with pasture demand being greater than current pasture growth rates (25kgDM/ha/day). Pasture growth rates are expected to hold or increase in the coming week with fine weather forecast. This being the case we will look to extend the current rotation to approximately 60 days to enable cover to build slightly prior to the end of August. A nitrogen/sulphur fertiliser blend (26-0-0-19) was applied to 50.3 ha of the milking platform this week at 39kg N/ha (150kg/ha blend). Calving is progressing well with 230 cows calved to date and an average of 197 cows going into the vat for the week. Focus for the coming weeks is to monitor cow health (mastitis and calving) and to spray off winter crop ground ready for planting spring pasture.

# 24 August 2015

