

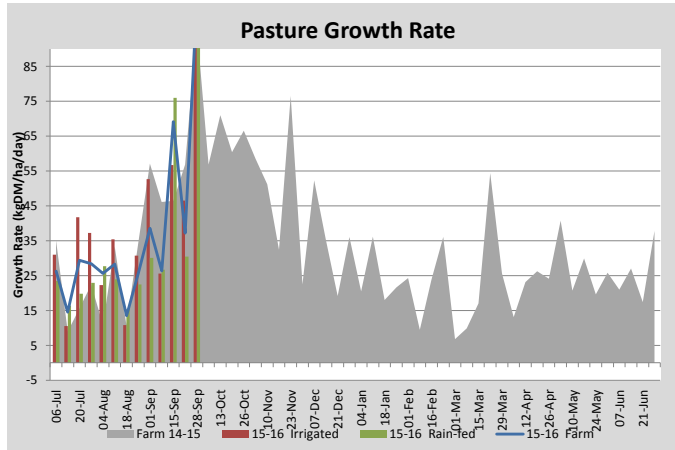
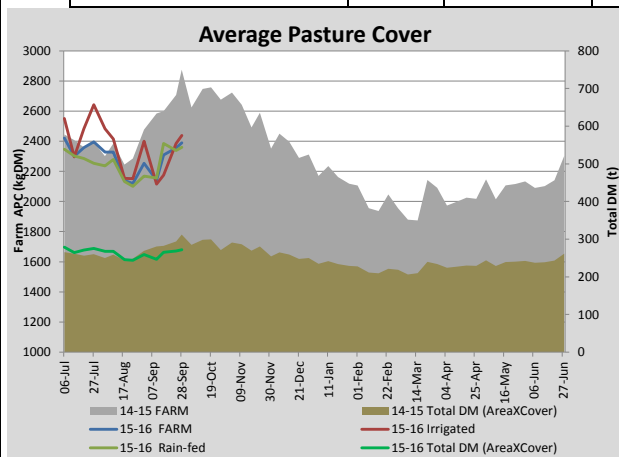
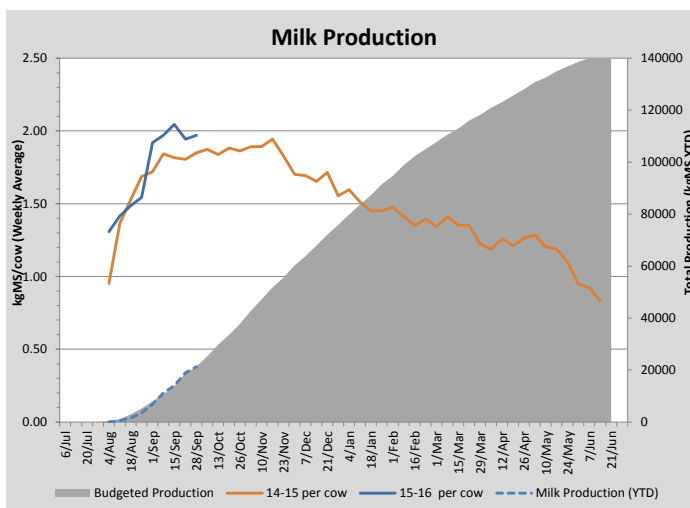
Key Summary Points

- 1** High growth rates are apparent over the whole platform, although all paddocks were measured by a different person which can lead to variation and may account for some of the high growth rates seen this week
- 2** Focus this coming week is on preparing 6 ha for planting of forage brassicas on the dairy platform and getting ready for the silage and irrigation season
- 3** Irrigation systems (pivot, fixed sprinklers and k-lines) are being prepared for start-up, due next week unless rain occurs

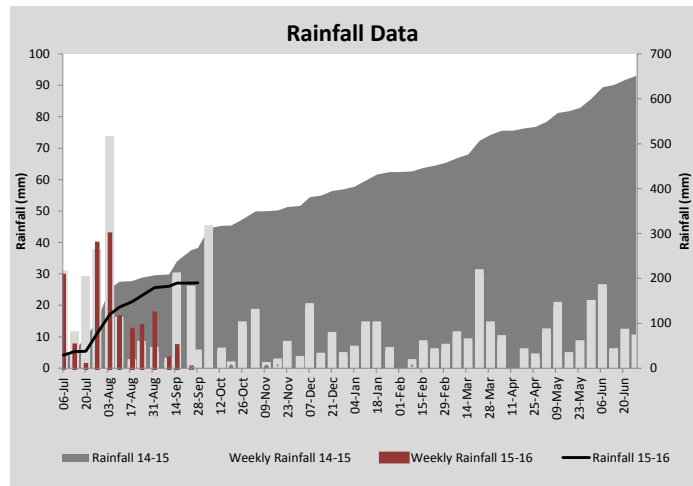
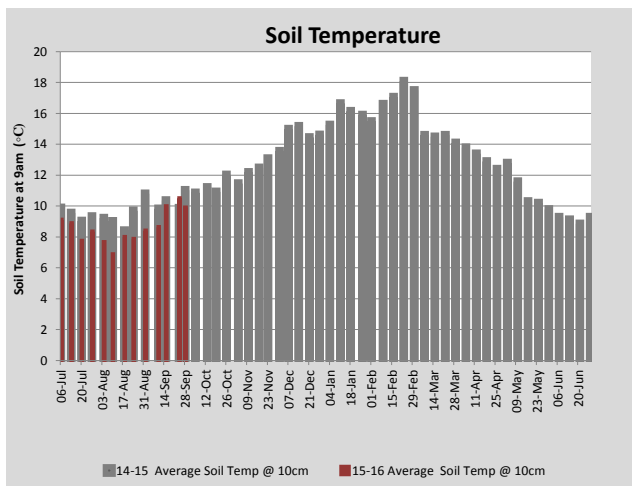
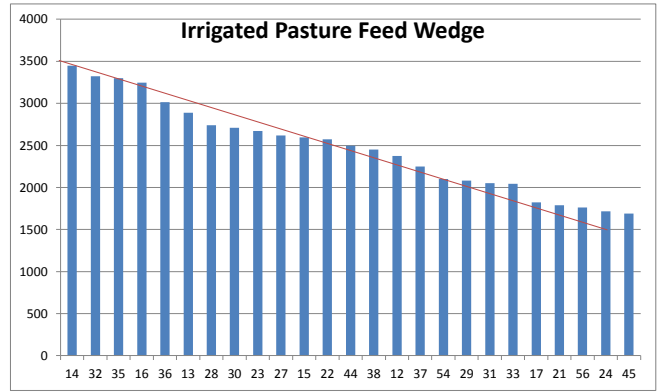
| PASTURE INFORMATION | Farm | | | Irrigated | | | Rain-fed | | |
|---------------------------------------|-----------|-----------|-----------|-----------|-----------|-----------|-----------|-----------|-----------|
| | Last Week | This Week | Variation | Last Week | This Week | Variation | Last Week | This Week | Variation |
| Grazed milking area (ha) | 113.9 | 113.9 | 0.0 | 42.2 | 42.2 | 0.0 | 71.7 | 71.7 | 0 |
| Rotation Length (days) | 37 | 37 | 0 | 38 | 38 | 0 | 36 | 36 | 0 |
| Grazing allocation per day (ha) | 3.1 | 3.1 | 0.0 | 1.1 | 1.1 | 0.0 | 2.0 | 2.0 | 0.0 |
| Average time since last grazed (days) | 53 | 36 | -17 | 40 | 36 | -4 | 60 | 36 | -24 |
| Leaf appearance rate (days per leaf) | 13 | 12 | -1 | 13 | 12 | -1 | 13 | 12 | -1 |
| Average Pasture Cover (kgDM/ha) | 2356 | 2389 | 33 | 2385 | 2439 | 54 | 2339 | 2360 | 21 |
| Pasture Growth Rate (kgDM/ha/day) | 37 | 104 | 66 | 47 | 103 | 57 | 30 | 104 | 73 |
| Post Grazing Biomass (kgDM/ha) | 1700 | 1680 | -20 | | | | | | |
| Nitrogen applied YTD (kgN/ha) | 27 | 39 | 13 | 0 | 7 | 7 | 0 | 16 | 16 |

*Please note all pasture calculations detailed above are based on the current Grazed Milking Area

| MILK PRODUCTION | Last Week | This Week | Variation |
|--------------------------------|-----------|-----------|-----------|
| Average No. cows in milk (vat) | 325 | 335 | 10 |
| Litres per cow | 26.3 | 26.7 | 0.4 |
| % Fat | 4.14 | 4.12 | -0.02 |
| % Protein | 3.26 | 3.23 | -0.03 |
| MS/cow/day | 1.94 | 1.97 | 0.03 |
| MS/ha/day | 5.59 | 5.84 | 0.25 |
| BMCC | 121714 | 104714 | -17000 |
| Average Liveweight (kg) | 0 | 0 | 0 |
| | Budget | To Date | Variation |
| Total Milk Production (kgMS) | 21,334 | 21,299 | 100% |
| MS/ha YTD | 187 | 202 | 15 |



| Last 7 days | | | | | |
|----------------|-------------|--------------|--------------|---------------|----------|
| Milkers Diet | kg DM | MJ ME | CP (%) | NDF (%) | \$/cow |
| Pasture Intake | 14.2 | 13.3 | 28.0 | 41.0 | 0.0 |
| Concentrates | 4.0 | 12.5 | 16.0 | 16.5 | 0.0 |
| Silage | 0.0 | 0.0 | 0.0 | 0.0 | 0.0 |
| Grazed forage | 0.0 | 0.0 | 0.0 | 0.0 | 0.0 |
| Other feeds | 0.0 | 0.0 | 0.0 | 0.0 | 0.0 |
| Total | 18.2 | 238.9 | 25.4 | 35.6 | 0 |
| Target | | 191 | 16-18 | >33 | 0 |



| Analysis | | | |
|--|----|---------------------------|---------|
| Expected growth rate next 7 days (kgDM/ha/day) | 50 | Target Leaf Grazing Stage | 2.5-3.0 |
| Total Demand from Pasture (kgDM/ha/day) | 44 | Predicted APC 7 days time | 2429 |
| APC balance (kgDM/ha/day) | 6 | Predicted APC Change | 39.4 |

Discussion

Average pasture cover built this week to 2407 kgDM/ha with good growth observed across the platform. 6 ha of the milking platform has been sprayed off and will be cultivated this week, ready for planting of summer forage brassica. Winter crop paddocks on the run-off blocks have been sown back to permanent pasture and a further 7 ha was sprayed off with glyphosate, half of this area will be sown back to permanent pasture and the other half to Italian ryegrass. Per cow production held at 1.97 kgMS/cow/day. We are currently assessing silage covers on the run-off blocks and will most likely begin harvesting next week. Irrigation systems (pivot, fixed and k-lines) are being checked and repaired ready for an imminent start-up. Starting irrigation at the correct time is very important to maintain high pasture growth rates.

28 September 2015

