

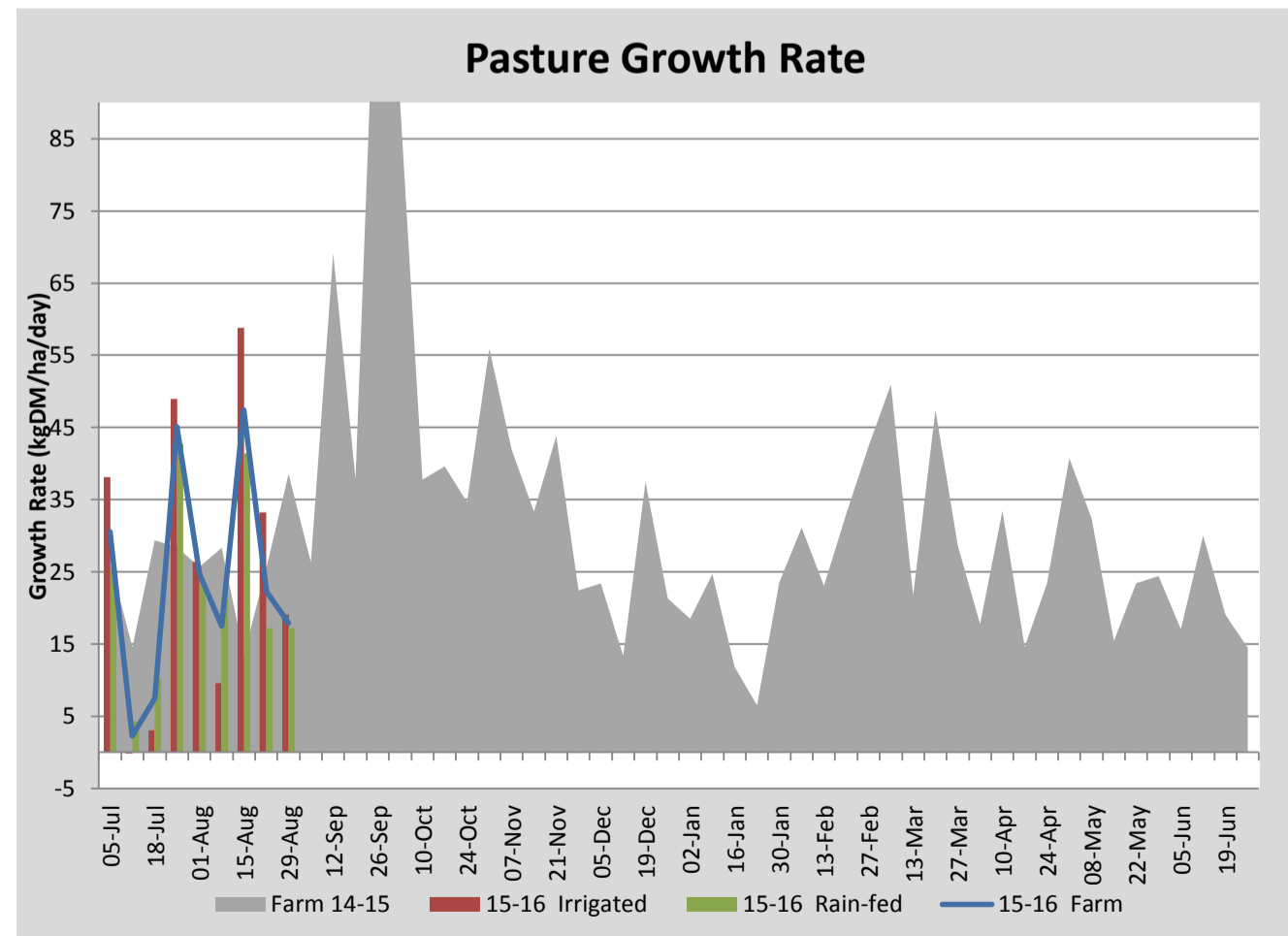
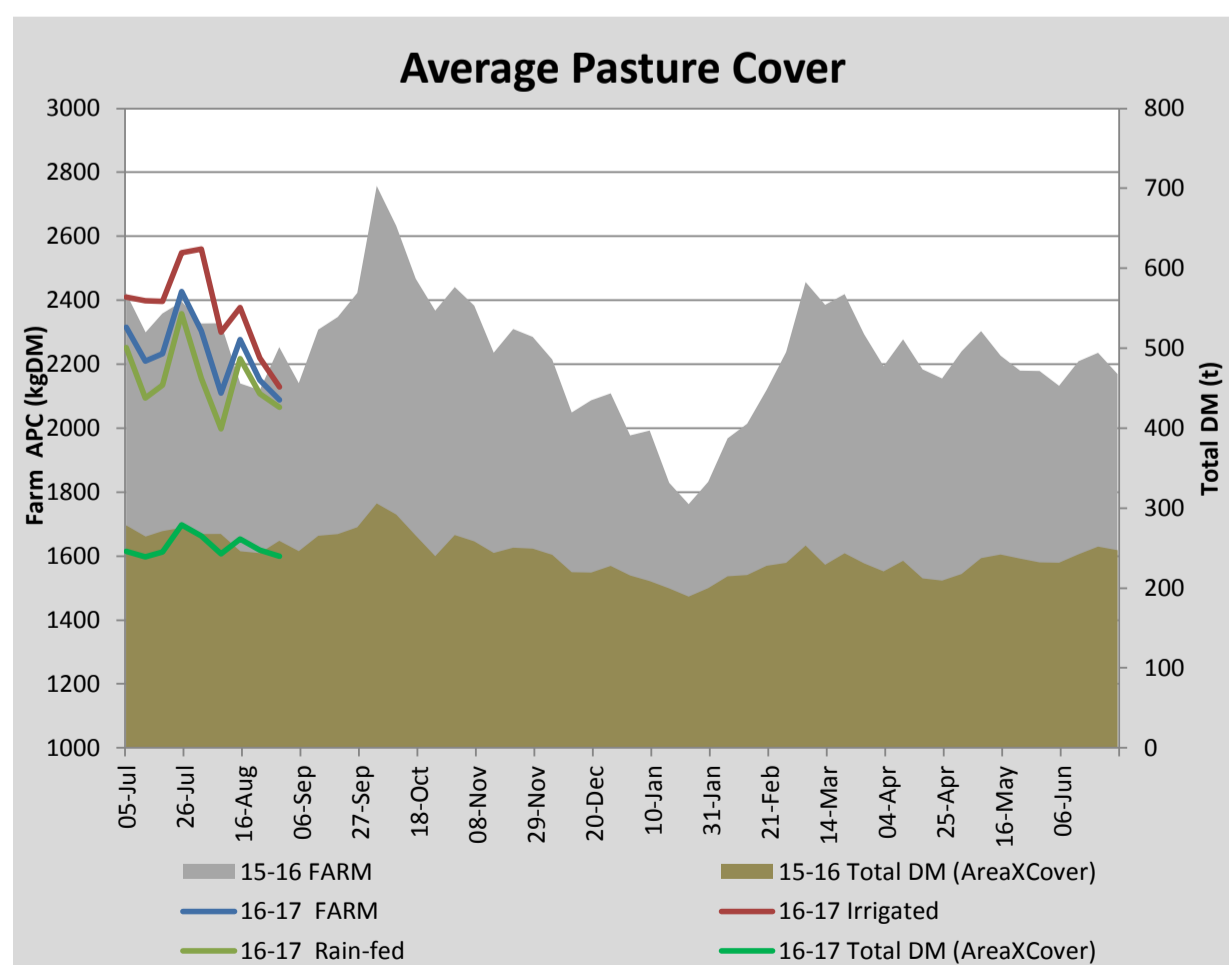
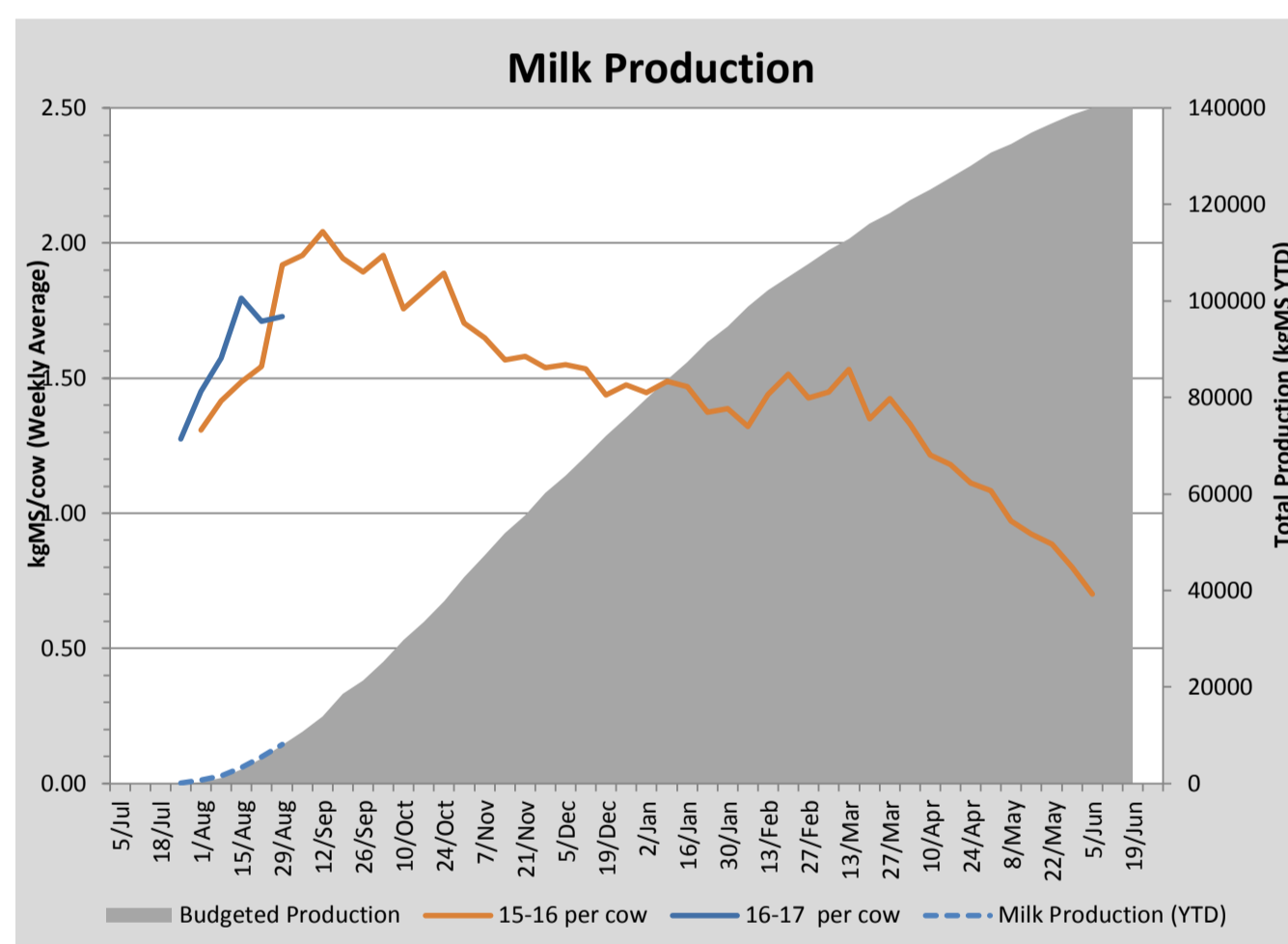
Key Summary Points

1	Average pasture cover continued to decrease this week with increasing demand and limited available supplement at hand creating a faster than preferred grazing rotation
2	Per cow MS production held this week at 1.73kgMS/cow
3	Focus for the coming week is to extend the rotation length by grazing some of the run off area and supplementing the milkers with PKE.

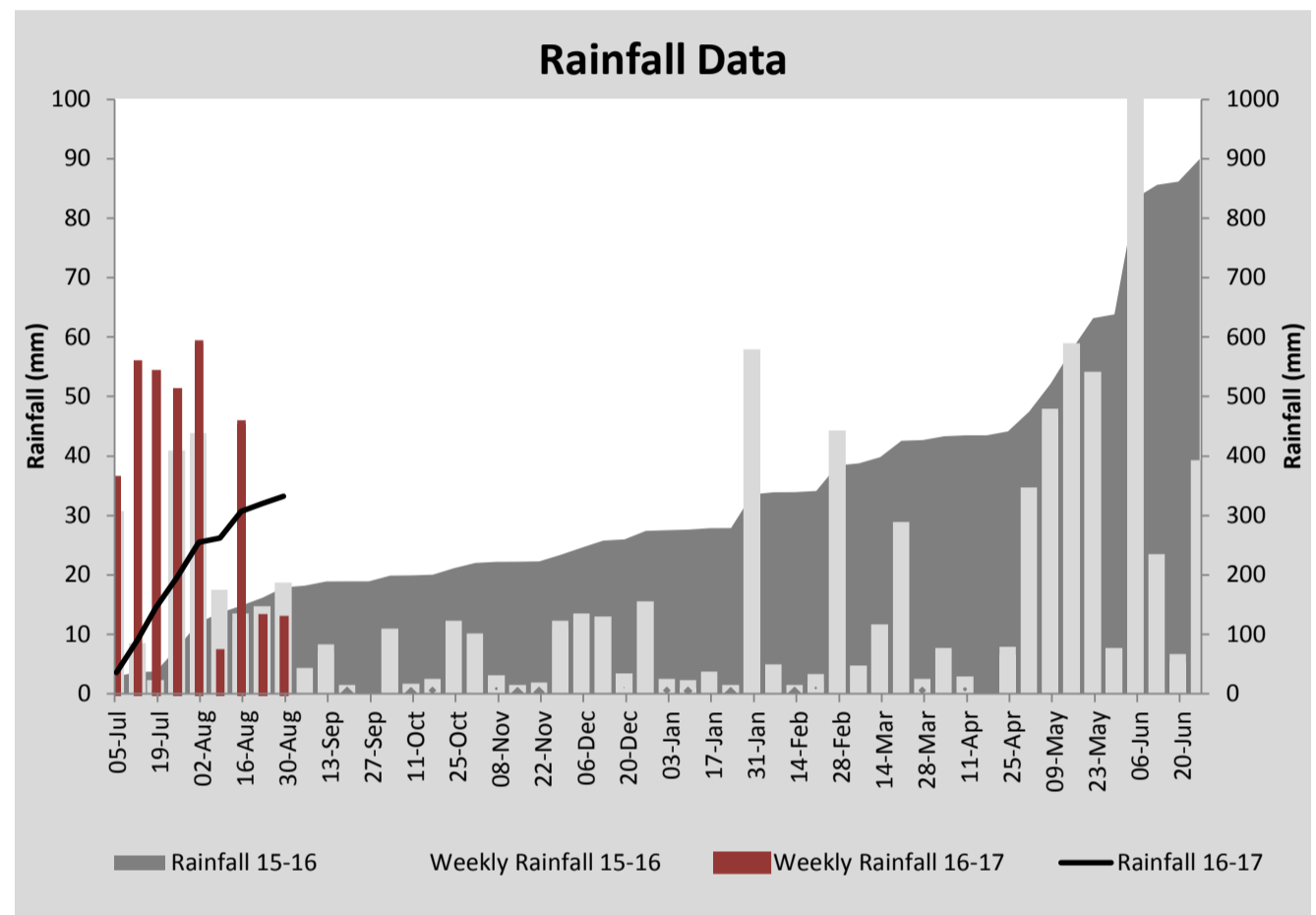
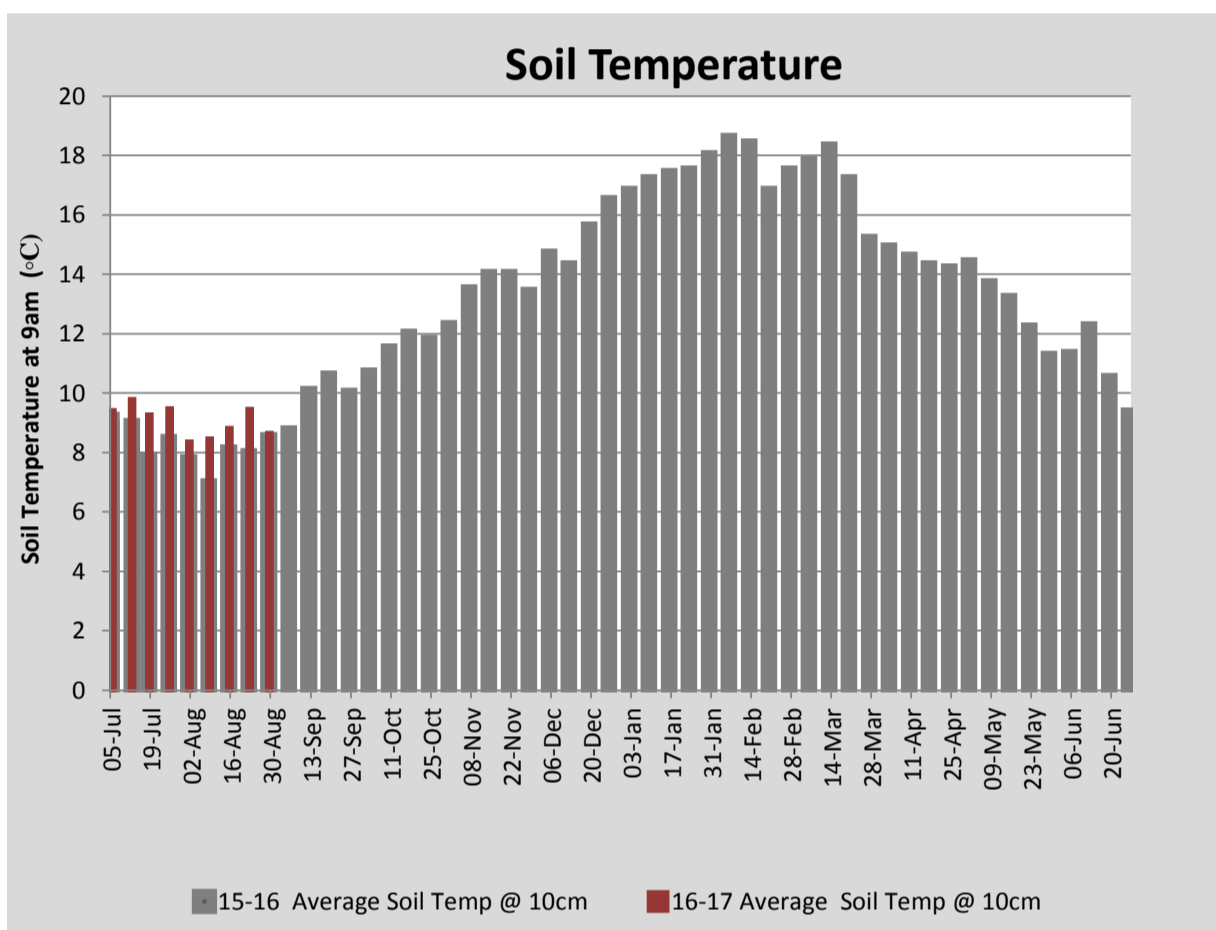
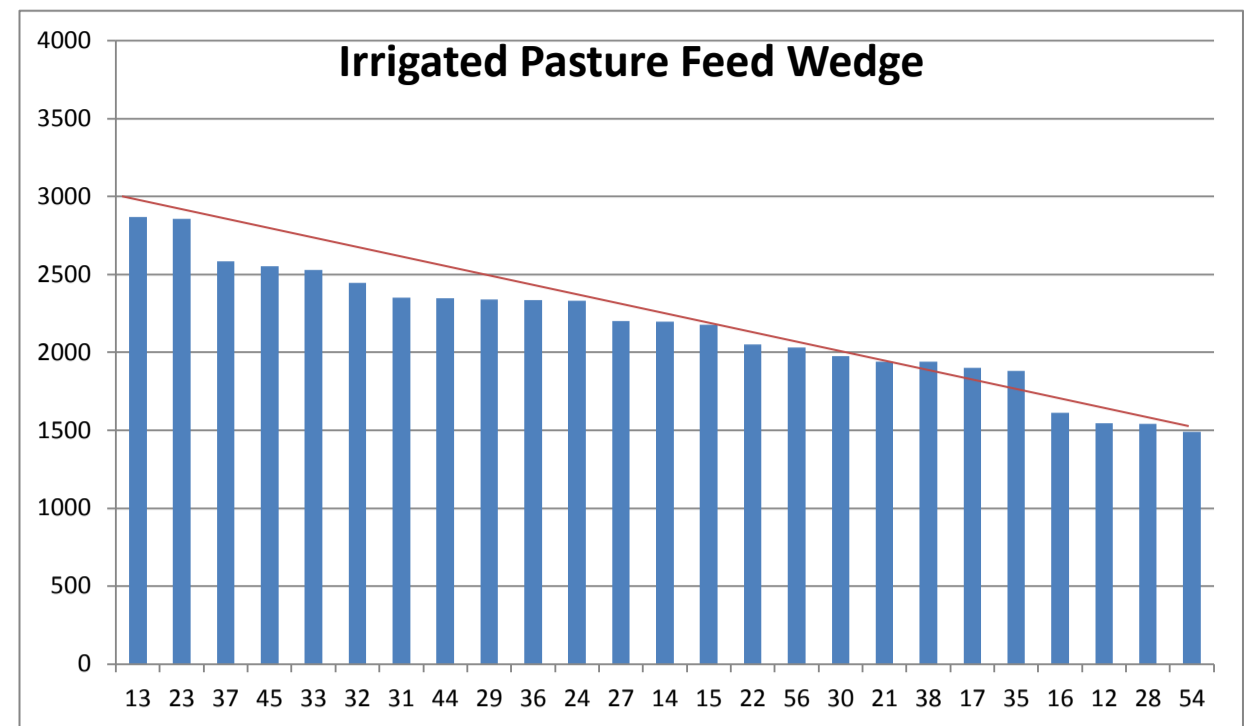
PASTURE INFORMATION	Farm			Irrigated			Rain-fed		
	Last Week	This Week	Variation	Last Week	This Week	Variation	Last Week	This Week	Variation
Grazed milking area (ha)	115.0	115.0	0.0	42.2	42.2	0.0	72.8	72.8	0
Rotation Length (days)	52	46	-7	43	43	0	60	47	-13
Grazing allocation per day (ha)	2.2	2.5	0.3	1.0	1.0	0.0	1.2	1.6	0.3
Average time since last grazed (days)	86	86	0	83	69	-14	88	97	9
Leaf appearance rate (days per leaf)	20	19	-1	20	19	-1	20	19	-1
Average Pasture Cover (kgDM/ha)	2149	2089	-60	2220	2129	-91	2108	2065	-43
Pasture Growth Rate (kgDM/ha/day)	22	18	-4	33	19	-14	17	17	-0
Post Grazing Biomass (kgDM/ha)	1450	1500	50						
Nitrogen applied YTD (kgN/ha)	21	34	13	0	17	17	0	11	11

*Please note all pasture calculations detailed above are based on the current Grazed Milking Area

MILK PRODUCTION	Last Week	This Week	Variation
Average No. cows in milk (vat)	215	250	35
Litres per cow	22.2	23.0	0.8
% Fat	4.41	4.27	-0.14
% Protein	3.25	3.25	0.00
MS/cow/day	1.71	1.73	0.02
MS/ha/day	3.25	3.82	0.57
BMCC	179,714	156,429	-23,286
Average Liveweight (kg)	0	0	0
	Budget	To Date	Variation
Total Milk Production (kgMS)	7,930	8,057	102%
MS/ha YTD	70	85	122%



Last 7 days					
Milkers Diet	kg DM	MJ ME	CP (%)	NDF (%)	\$/cow
Pasture Intake	10.4	12.5	20.0	45.0	0.0
Concentrates	4.3	12.9	45.6	20.3	0.0
Silage	1.5	0.0	0.0	0.0	0.0
Grazed forage	0.0	0.0	0.0	0.0	0.0
Other feeds	0.9	12.0	0.0	40.0	0.0
Total	17	195	23.7	34.6	0
Target		90	16-18	>33	0



Analysis			
Expected growth rate next 7 days (kgDM/ha/day)	30	Target Leaf Grazing Stage	2.5-3.0
Total Demand from Pasture (kgDM/ha/day)	31	Predicted APC 7 days time	2084
APC balance (kgDM/ha/day)	-1	Predicted APC Change	-4.2

Discussion

Average pasture cover continued to decline this week to 2089kgDM/ha with increasing demand and limited supplement available. We will be grazing 4.1ha of the run off with the milkers this coming week to extend the rotation on the milking platform. With no quality silage remaining we are substituting with quality hay and PKE. Favourable weather is forecast for the coming week and so we expect covers to hold or increase. Winter crop paddocks were sown back to perennial pasture this week. These paddocks were pre-spread with 0-7-13-8 at 300kg/ha and lime at 5t/ha prior to drilling.

29 August 2016

