

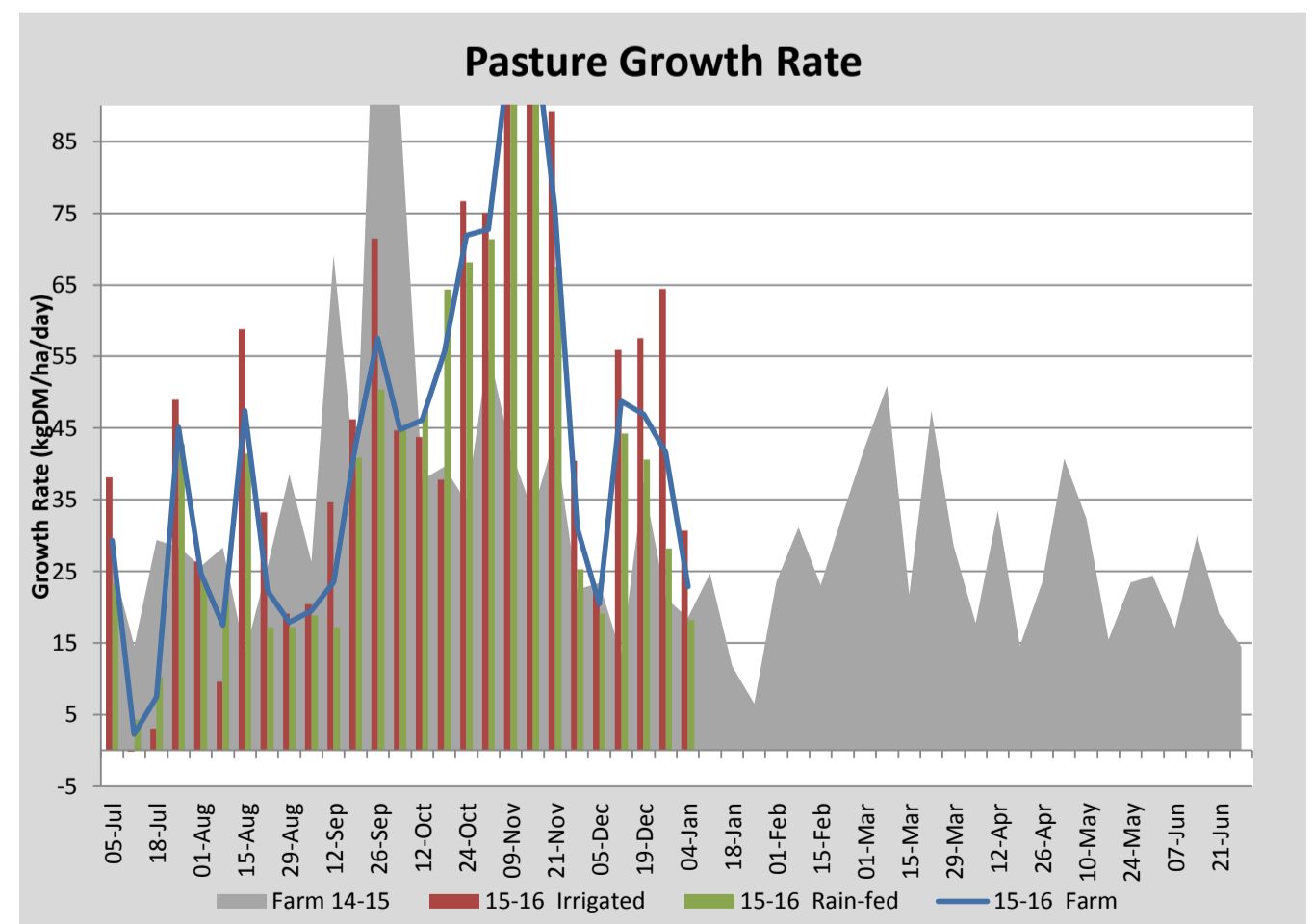
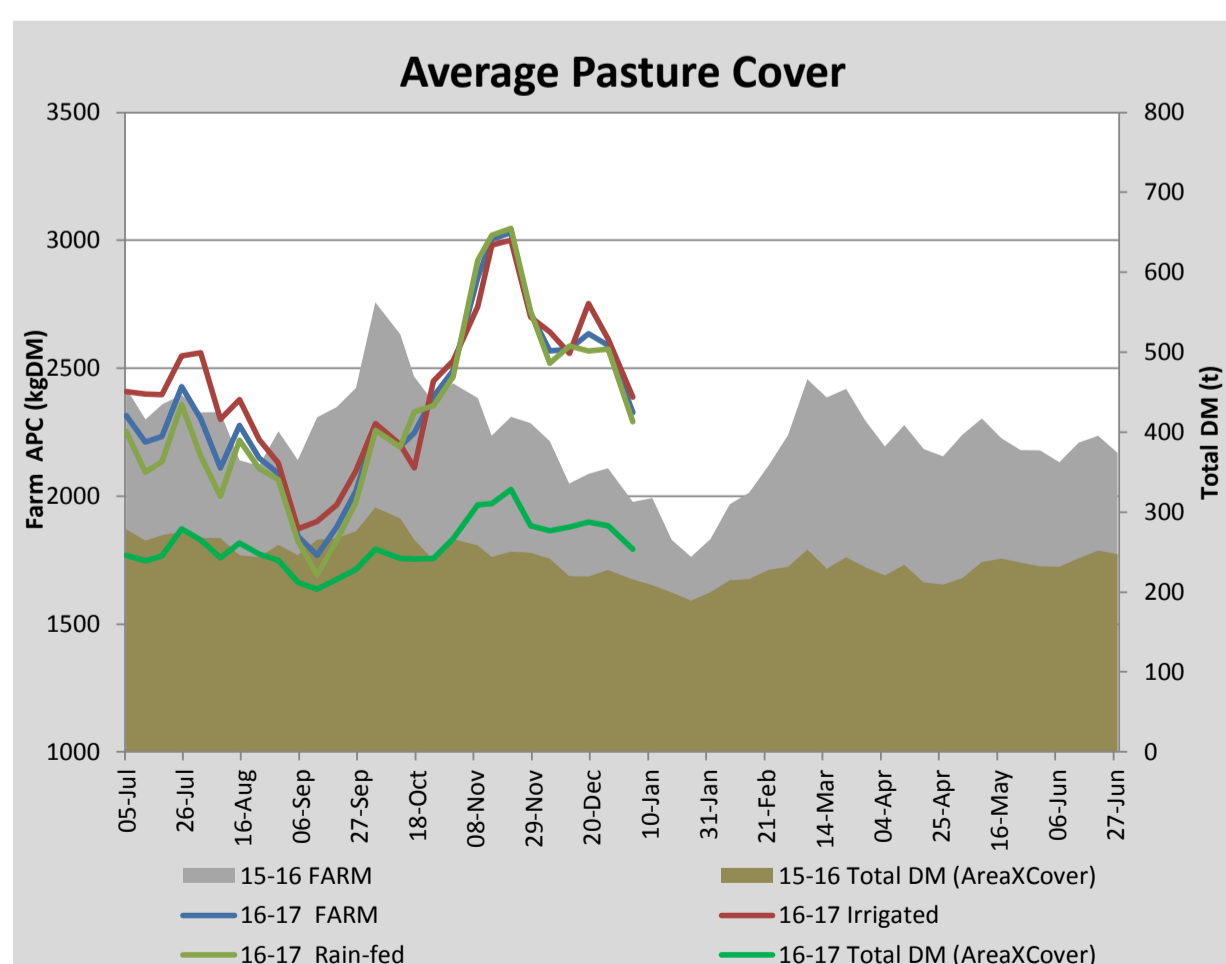
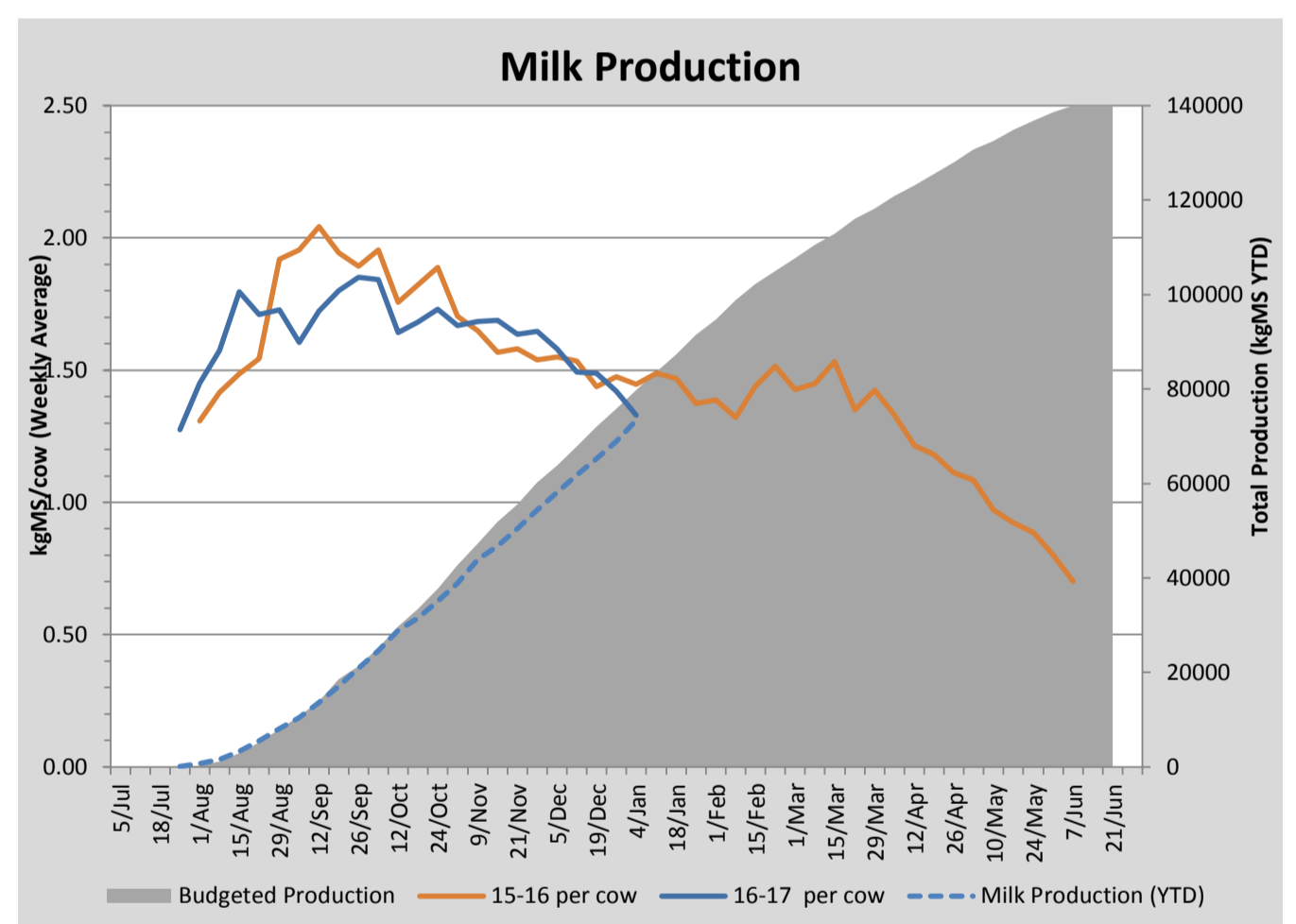
Key Summary Points

- 1 Average pasture cover decreased this week to 2327kgDM/ha.
- 2 Per cow milk solid production continued to decline this week with reproductive growth and corresponding lower pasture quality limiting production
- 3 Key focus this coming week is to top paddocks post grazing to remove reproductive growth and ensure that soil moisture from recent rain is utilised to grow quality feed.

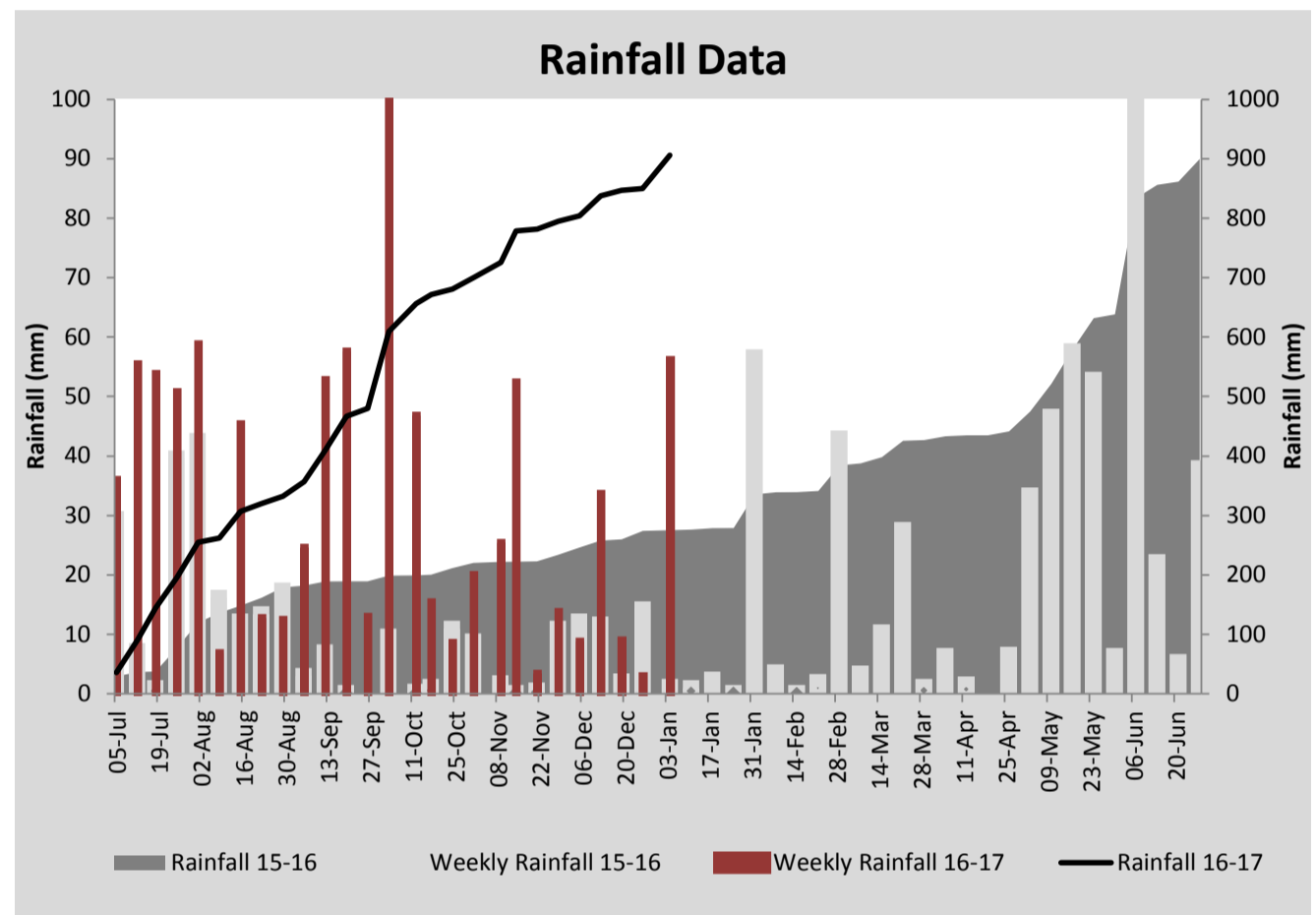
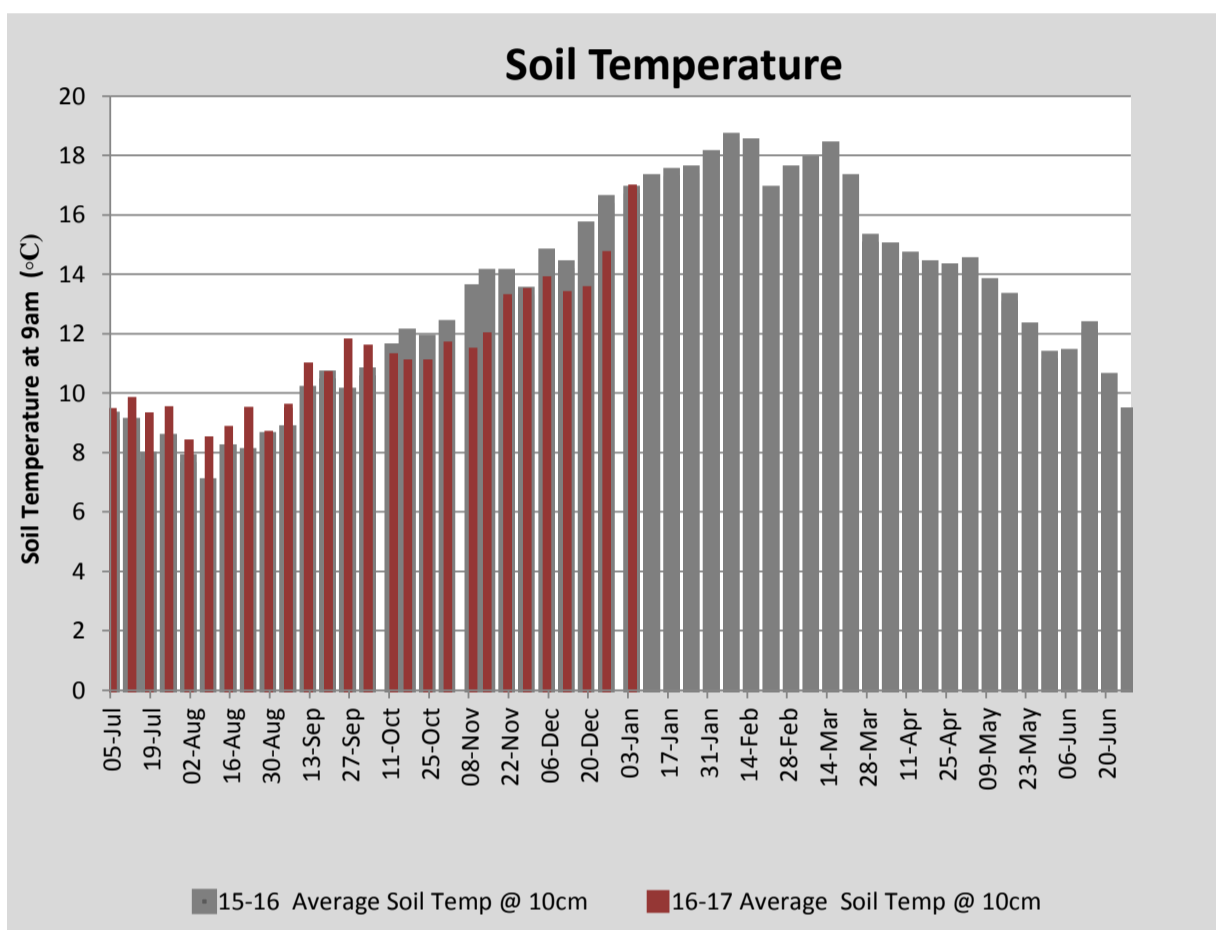
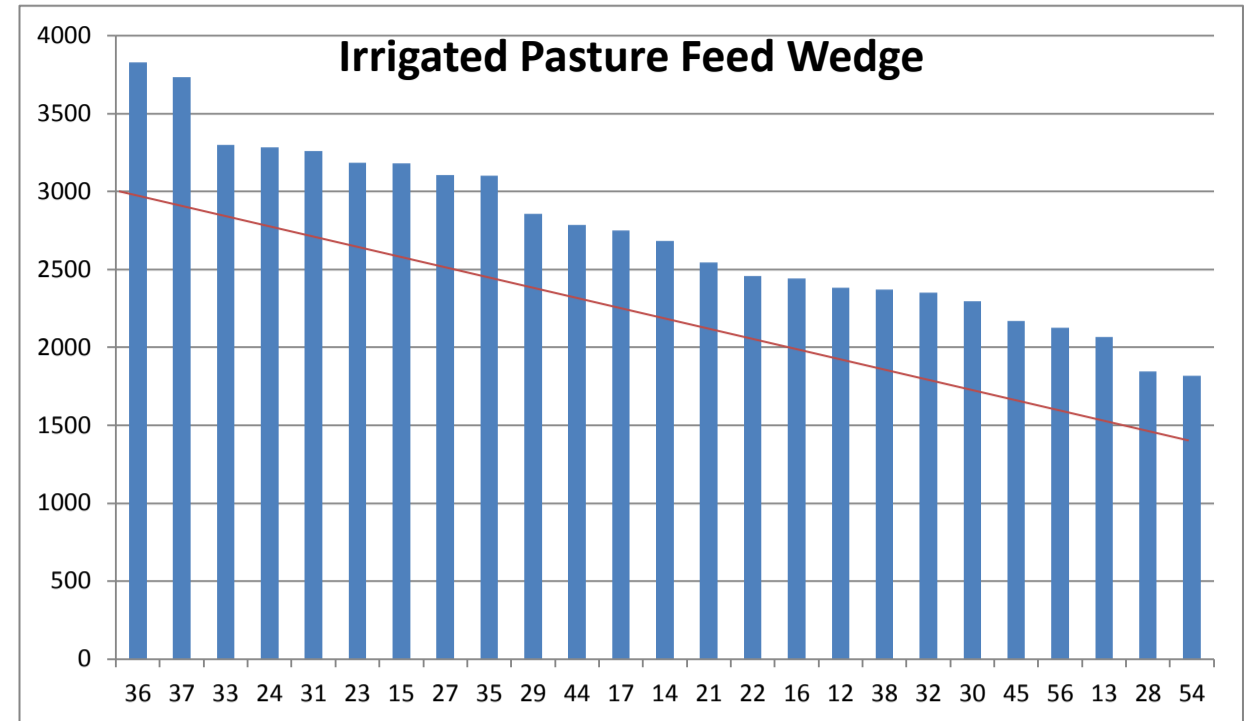
PASTURE INFORMATION	Farm			Irrigated			Rain-fed		
	Last Week	This Week	Variation	Last Week	This Week	Variation	Last Week	This Week	Variation
Grazed milking area (ha)	109.1	109.1	0.0	42.2	40.5	-1.7	67.0	68.7	2
Rotation Length (days)	44	41	-3	74	27	-47	36	59	23
Grazing allocation per day (ha)	2.5	2.7	0.2	0.6	1.5	1.0	1.9	1.2	-0.8
Average time since last grazed (days)	41	44	3	44	39	-5	39	47	8
Leaf appearance rate (days per leaf)	10	10	0	10	10	0	10	10	0
Average Pasture Cover (kgDM/ha)	2589	2327	-262	2612	2388	-224	2575	2291	-284
Pasture Growth Rate (kgDM/ha/day)	42	23	-19	64	31	-34	28	18	-10
Post Grazing Biomass (kgDM/ha)	1760	1715	-45						
Nitrogen applied YTD (kgN/ha)	135	146	11	0	24	24	0	4	4

*Please note all pasture calculations detailed above are based on the current Grazed Milking Area

MILK PRODUCTION	Last Week	This Week	Variation
Average No. cows in milk (vat)	352	350	-2
Litres per cow	17.6	17.1	-0.6
% Fat	4.53	4.48	-0.05
% Protein	3.38	3.34	-0.04
MS/cow/day	1.42	1.33	-0.09
MS/ha/day	4.42	4.12	-0.30
BMCC	106,000	101,571	-4,429
Average Liveweight (kg)	0	0	0
	Budget	To Date	Variation
Total Milk Production (kgMS)	79,817	73,373	92%
MS/ha YTD	700	707	101%



Last 7 days					
Milkers Diet	kg DM	MJ ME	CP (%)	NDF (%)	\$/cow
Pasture Intake	13.6	0.0	0.0	0.0	0.0
Concentrates	3.0	12.9	45.6	20.3	0.0
Silage	1.4	0.0	0.0	0.0	0.0
Grazed forage	0.0	0.0	0.0	0.0	0.0
Other feeds	0.0	0.0	0.0	0.0	0.0
Total	18				0
Target			16-18	>33	0



Analysis			
Expected growth rate next 7 days (kgDM/ha/day)	39	Target Leaf Grazing Stage	2.5-3.0
Total Demand from Pasture (kgDM/ha/day)	42	Predicted APC 7 days time	2308
APC balance (kgDM/ha/day)	-3	Predicted APC Change	-18.9

Discussion

Average pasture declined significantly this week. This is due to a number of paddocks being cut for hay along with recently grazed paddocks being mown post grazing. We expect cover to hold into the coming week in response to good rainfall received last week. The turnip crops are reaching maturity. We will look to begin grazing these in the coming weeks. Per cow milk solid production continues to decline this week with pasture quality limiting production. Lower average per cow production is also due to the large number of first year milkers in the herd (100) whose production is declining significantly. The introduction of turnips in the coming weeks should help to stabilise the falling production. There is a decline in the frequency of new cases of pink eye in the calves. Calves have been grazing spring sown pasture and quality regrowth on silage paddocks. Kale planting has been delayed due to contractor availability.

4 January 2017

