

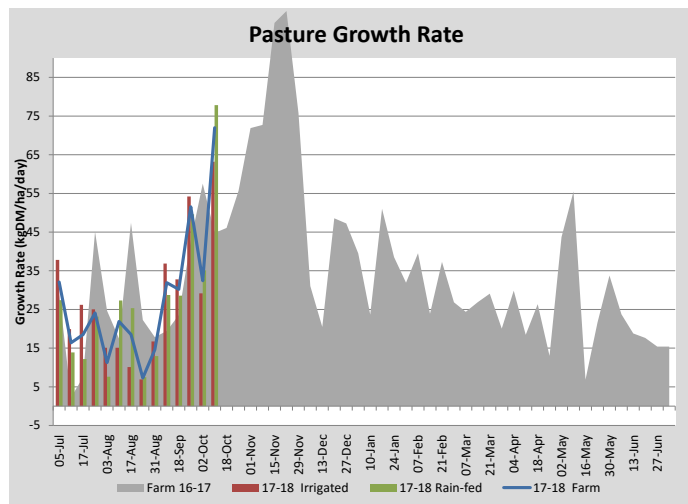
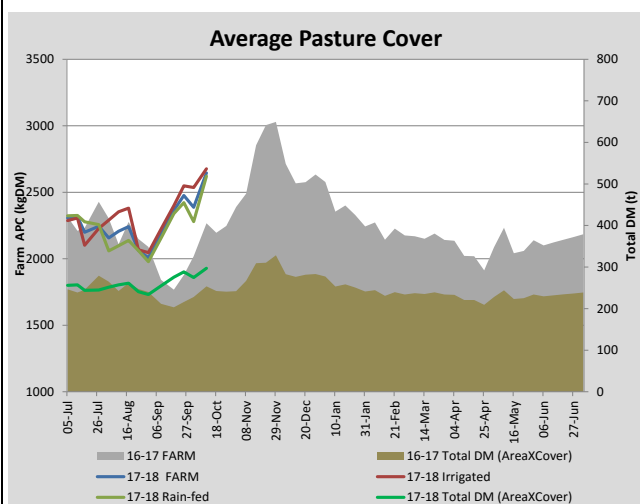
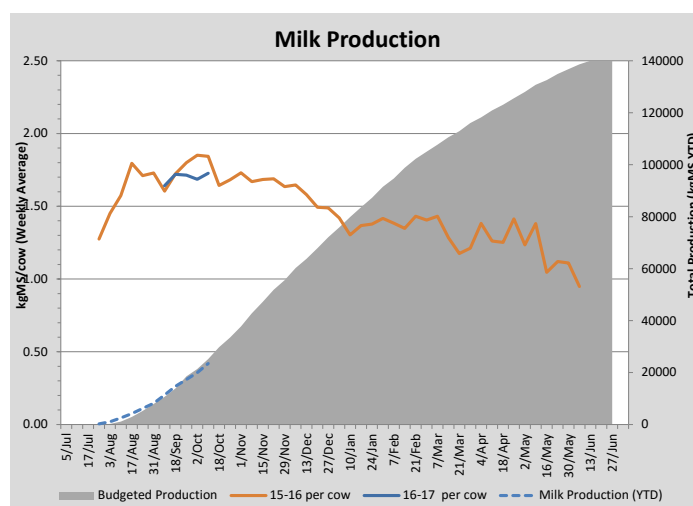
Key Summary Points

- 1** There has been a big increase in pasture growth rates.
- 2** Paddocks have been identified for silage and will be mowed as soon as possible.
- 3** Calves will be weighed over the next week to start weaning those that have reached target weights.

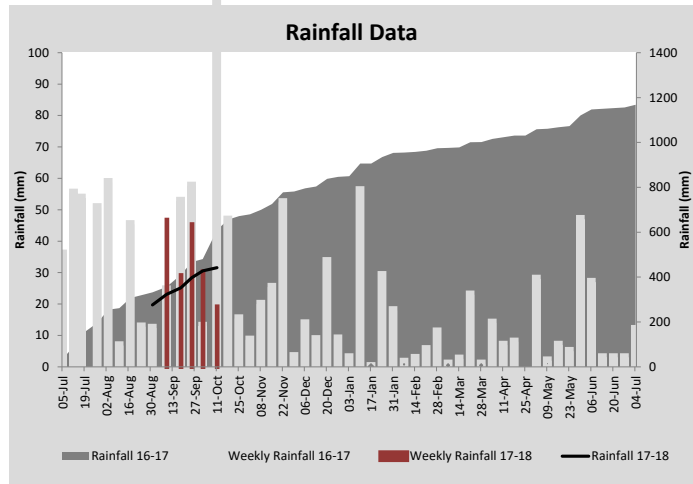
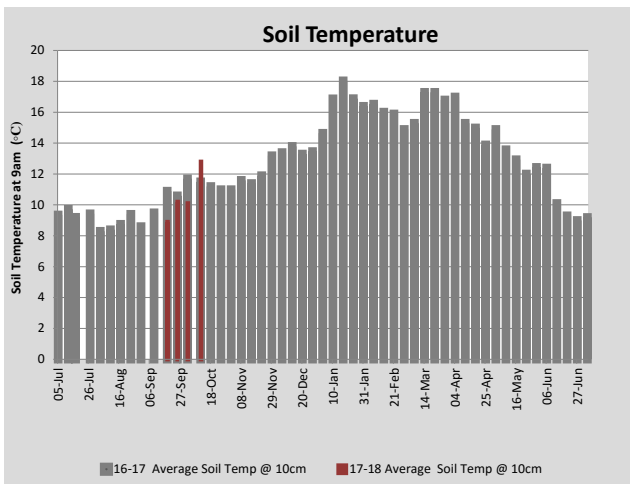
PASTURE INFORMATION	Farm			Irrigated			Rain-fed		
	Last Week	This Week	Variation	Last Week	This Week	Variation	Last Week	This Week	Variation
Grazed milking area (ha)	115.2	112.3	-2.9	40.5	49.5	9.0	71.8	62.9	-9
Rotation Length (days)	36	37	2	36	27	-9	36	54	19
Grazing allocation per day (ha)	3.2	3.0	-0.2	1.3	1.9	0.5	1.9	1.2	-0.7
Average time since last grazed (days)	54	68	15	52	65	13	55	71	16
Leaf appearance rate (days per leaf)	14	14	0	14	14	0	14	14	0
Average Pasture Cover (kgDM/ha)	2387	2645	259	2536	2677	141	2279	2621	341
Pasture Growth Rate (kgDM/ha/day)	32	72	40	29	63	34	35	78	43
Post Grazing Biomass (kgDM/ha)	1515	1662	147						
Nitrogen applied YTD (kgN/ha)	8	8	0	0	0	0	0	0	0

*Please note all pasture calculations detailed above are based on the current Grazed Milking Area

MILK PRODUCTION	Last Week	This Week	Variation
Average No. cows in milk (vat)	290	300	10
Litres per cow	22.0	23.5	1.4
% Fat	4.38	4.04	-0.34
% Protein	3.23	3.35	0.12
MS/cow/day	1.68	1.73	0.04
MS/ha/day	4.32	4.58	0.26
BMCC	200,429	188,571	-11,857
Average Liveweight (kg)	0	0	0
	Budget	To Date	Variation
Total Milk Production (kgMS)	25,225	23,465	93%
MS/ha YTD	221	236	107%



Last 7 days					
Milkers Diet	kg DM	MJ ME	CP (%)	NDF (%)	\$/cow
Pasture Intake	15.0	0.0	0.0	0.0	0.0
Concentrates	4.0	0.0	0.0	0.0	0.0
Silage	0.0	0.0	0.0	0.0	0.0
Grazed forage	0.0	0.0	0.0	0.0	0.0
Other feeds	0.0	0.0	0.0	0.0	0.0
Total	19				0
Target			16-18	>33	0



Analysis			
Expected growth rate next 7 days (kgDM/ha/day)	50	Target Leaf Grazing Stage	2.5-3.0
Total Demand from Pasture (kgDM/ha/day)	32	Predicted APC 7 days time	2769
APC balance (kgDM/ha/day)	18	Predicted APC Change	123.7

Discussion

There was a big increase in pasture growth rates this week. Cow requirements per hectare are 42 kg/ha compared with a pasture growth rate of 72 kg DM/ha. 12.2 hectares has been dropped-out for silage and will be cut as soon as possible. With evapotranspiration rates increasing at this time of the year, at Elliott it is generally only 7-10 days between when the soil is full of water and when irrigation needs to start (and this timeframe decreases as it gets warmer). The focus for the upcoming week is preparing for the start of mating - this is planned for October 20 for the heifers and October 26 for the milking herd. The vet conducted a metricheck on all the milking cows. Nine were identified with infections and treated. Metrichecks should be done three weeks prior to mating start date to allow for any infections to be treated. The heifers have been synchronised and will be mated using fixed-time insemination.

11 October 2017

