

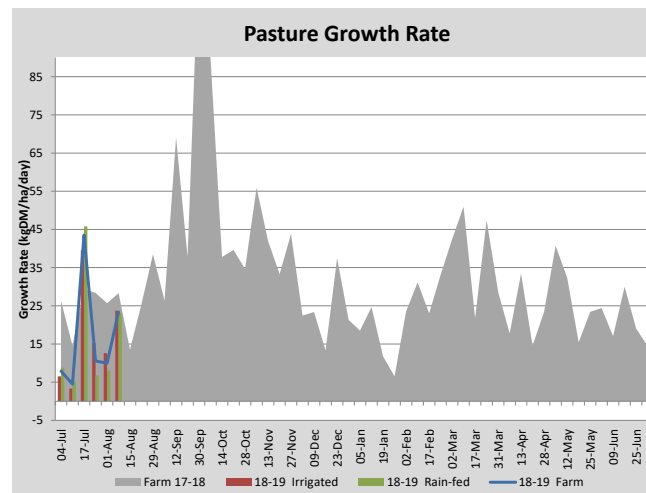
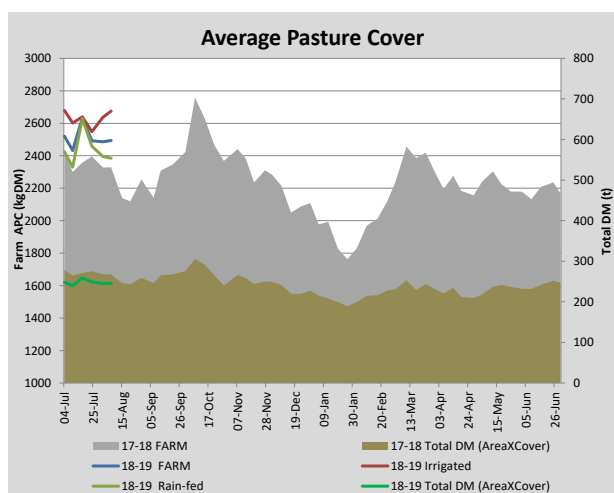
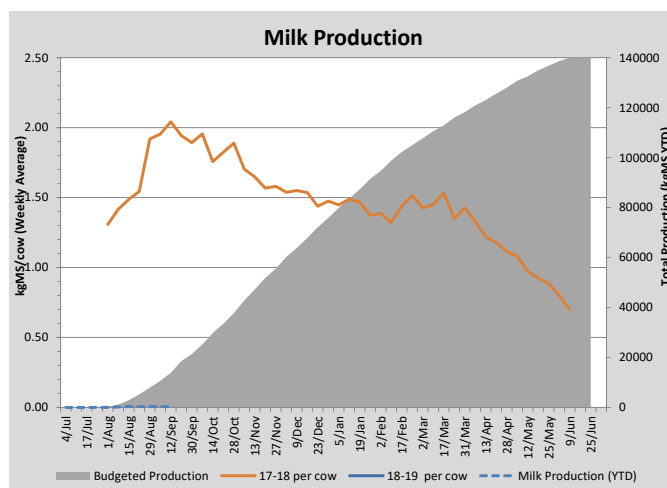
## Key Summary Points

- 1 Calving is progressing well - we are almost at the half-way point.
- 2 There has been an improvement in average growth rates this week and average pasture cover is still holding.
- 3 Bulk milk cell count is high.

PASTURE INFORMATION	Farm			Irrigated			Rain-fed		
	Last Week	This Week	Variation	Last Week	This Week	Variation	Last Week	This Week	Variation
Grazed milking area (ha)	98.5	98.5	0.0	37.2	37.2	0.0	61.3	61.3	0.0
Leaf appearance rate (days per leaf)	21	19	-2	21	19	-2	21	19	-2
Average Pasture Cover (kgDM/ha)	2487	2495	8	2637	2676	39	2395	2385	-11
Pasture Growth Rate (kgDM/ha/day)	10	23	13	13	24	11	8	23	15
Post Grazing Biomass (kgDM/ha)	1462	1574	112						
Nitrogen applied YTD (kgN/ha)	0	0	0	0	0	0	0	0	0

\*Please note all pasture calculations detailed above are based on the current Grazed Milking Area

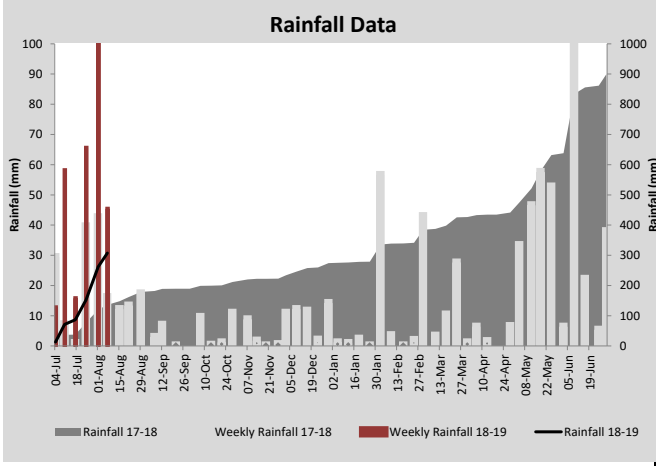
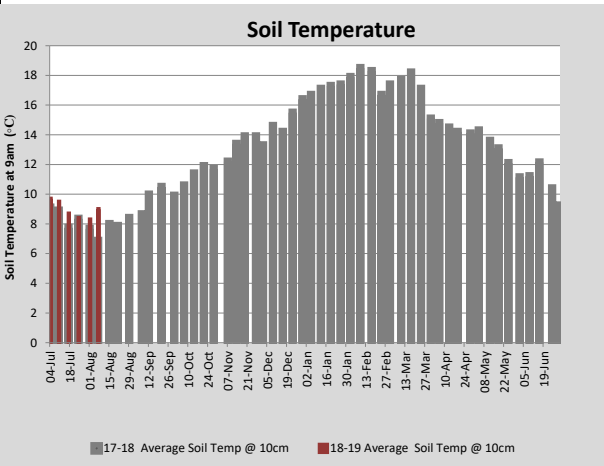
MILK PRODUCTION	Last Week	This Week	Variation
Average No. cows in milk (vat)	0	30	30
Litres per cow	#N/A	17.4	#N/A
% Fat	#N/A	4.88	#N/A
% Protein	#N/A	3.93	#N/A
MS/cow/day	#N/A	1.51	#N/A
MS/ha/day	#N/A	0.17	#N/A
BMCC		618	#VALUE!
Average Liveweight (kg)	0	0	0
	Budget	To Date	Variation
Total Milk Production (kgMS)	1,144	143	-12%
MS/ha YTD	10		



Last 7 days					
Milkers Diet	kg DM	MJ ME	CP (%)	NDF (%)	\$/cow
Pasture Intake	16.0	0.0	0.0	0.0	0.0
Concentrates	3.0	0.0	0.0	0.0	0.0
Silage	0.0	0.0	0.0	0.0	0.0
Grazed forage	0.0	0.0	0.0	0.0	0.0
Other feeds	0.0	0.0	0.0	0.0	0.0
<b>Total</b>	<b>19</b>	<b>0</b>	<b>0.0</b>	<b>0.0</b>	<b>0</b>
<b>Target</b>		<b>90</b>	<b>16-18</b>	<b>&gt;33</b>	<b>0</b>



Feeding out along the fence line can significantly reduce wastage from trampling but sometimes you just can't win...strong wind has blown the hay through the fence!



Analysis			
Expected growth rate next 7 days (kgDM/ha/day)	15	Target Leaf Grazing Stage	2.5-3.0
Total Demand from Pasture (kgDM/ha/day)	21	Predicted APC 7 days time	2454
APC balance (kgDM/ha/day)	-6	Predicted APC Change	-40.6

## Discussion

Calving is continuing to progress well - 144 cows have now calved (almost half-way!). There have only been 2 cases of milk fever so far. However, there is a problem with the bulk milk cell count (BMCC) which has been high since milk started being picked-up. There are many contributing factors to this - muddy conditions, yard wash pump has broken down and problems with milk let-down in the heifers. Each cow in the herd has been checked for mastitis three times over the past week which has identified a few cows with clinical mastitis. Conductivity from the milk meters is also being used to identify potential high cell count cows. Milk from suspect cows is being fed to calves with surplus being stored. Despite these actions, the cell count is still high. The herd test scheduled to be conducted in two weeks has been brought forward to help identify cows with sub-clinical mastitis. To date, the ratio of heifers to bulls has been 1.06:1. The average birthweight of the calves to date has been 36.5 kg. Calf health is good and no major issues have been experienced. Colostrum continues to be tested using a refractometer with the best quality colostrum being fed twice to calves in their first 24 hours.

# 7 August 2018

