



Our Accommodation

NOVEMBER 2023

UNIVERSITY of
TASMANIA 

Our Accommodation

Join a vibrant student community living near or on-campus where you'll make friends and share the best lifestyle and uni experience.

From self-contained apartments to communal living colleges, we have accommodation to suit your needs. We also offer plenty of financial support to keep our accommodation affordable and have options that fall under the Australian Government's National Rent Affordability Scheme.

This gives you close access to the inner city, beaches, or our campuses.

Hobart accommodation

As a student living in Hobart, you'll have the chance to live right in the heart of the action.

Our 42 Melville Street and Hobart Apartments offer all the conveniences and attractions of inner-city living. Both locations offer self-contained studio accommodation, with 42 Melville Street also offering shared apartments. They are also a short walk to our city campuses.

For those seeking a little more tranquillity, Sandy Bay is an oasis of calm, less than 10 minutes drive from the city. Our University Apartments offer six-bedroom flats, while Christ and John Fisher colleges offer a residential college experience with single rooms and shared facilities.

Jane Franklin Hall is another student accommodation option located between the CBD and our Sandy Bay campus. It's an Oxford/Cambridge-style residential college that is affiliated with the University of Tasmania, but operated independently.

Seafarer accommodation

Accommodation bookings are available for individuals, groups and industry partners studying with us at the Australian Maritime College in Launceston.

Launceston accommodation

Tasmania's second largest city, Launceston offers a vibrant blend of culture, nature, and industry. And you can live right in the thick of it.

Launceston is home to both our Newnham and Inveresk campuses. Newnham is a spacious, 50-hectare campus overlooking the stunning Tamar River, and just a short drive from the city centre. Our Inveresk Campus is located near the inner city, alongside the Queen Victoria Museum and Art Gallery.

The University offers a range of convenient and comfortable accommodation options. These include studio apartments, on-campus accommodation, and more. Inveresk will become the main campus for Launceston from 2024, with a staged transition for students from 2023.

Burnie accommodation

Burnie is a city of golden-sanded beaches, surrounded by gorgeous natural landscapes.

In Burnie, every convenience is available, without the crowds and traffic. It's a city of creativity and innovation, with the highest number of artists per capita in the country. Here, you'll have the opportunity to connect with people from all walks of life.

Our West Park apartments front a beautiful beach, so you can hear the waves lapping the sand as you drift off to sleep. The University has recently built a new \$50 million campus with incredible new facilities, helping strengthen collaboration with community and industry.

LAUNCESTON – NORTHERN TASMANIA

Accommodation facilities	Investigator Hall Single	Newnham Apartments Single	Inveresk Apartments Single
Weekly costs	\$232*	\$241*	\$248*
Located on campus	Yes	Yes	Yes
Fully furnished	Yes	Yes	Yes
WiFi in every bedroom	Yes	Yes	Yes
Electricity included	Yes	Yes	Yes
Heating included	Yes	Yes	Yes
Free TV, DVD, Austar/Foxtel	Community areas	Community areas	Community areas
On-site community events	Yes	Yes	Yes
On-site support and wellbeing	Yes	Yes	Yes
On-site 24 hour security	Yes	Yes	Yes
All buildings security card only access	Yes	Yes	Yes
Wheelchair accessible room and amenities	No	Yes	Yes
King size single or standard single bed and mattress	Yes	Queen beds	Queen beds
Built-in wardrobe, mirror, desk and drawers	Yes	Yes	Yes
On-site fully equipped laundry with dryers	Yes	Yes	Yes
On-site low cost café and dining options	Yes	Yes	No
Can request single sex apartment, house or corridor	Yes	Yes	Yes
Single sex bathrooms available	Yes	Private bathroom	Private bathroom
Leases tailored to academic year Contract Period	Yes	min. 42 weeks	min. 42 weeks
On-site car parking (additional fees apply)	Yes	Yes	Yes (limited)
Part of a supportive community just for students	Yes	Yes	Yes
Catering included in weekly cost	No	No	No

The University of Tasmania is part of the National Rent Affordability Scheme (NRAS). This means we can offer high-quality, purpose-built accommodation to students in fantastic locations at a fraction of the normal price.

*Costs listed are per week for 2024 and are subject to change and NRAS eligibility. Refer to the website for the most up-to-date information.



HOBART SOUTHERN TASMANIA

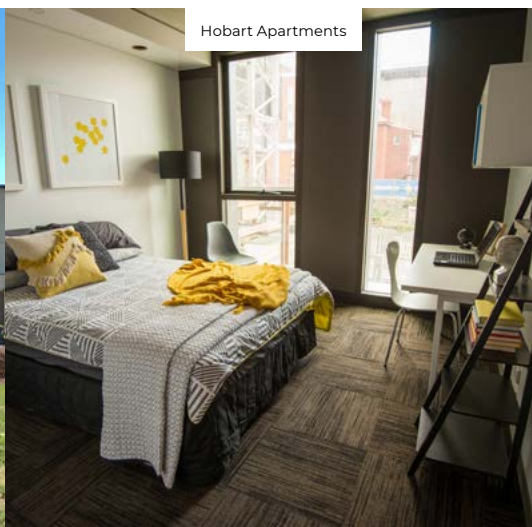
CRADLE COAST
NORTH WEST
TASMANIA

Accommodation facilities	University Apartments Single	Christ College Single	John Fisher College Single	Jane Franklin Hall Single	Hobart Apartments From \$319*	42 Melville Street \$336-\$366*	West Park Apartments Single \$176*
Weekly costs	\$292*	\$205-\$292*	\$283*	\$522*	From \$319*	\$336-\$366*	\$176*
Located on campus	Yes	Yes	Yes	No	Hobart CBD	Hobart CBD	Yes
Fully furnished	Yes	Yes	Yes	Yes	Yes	Yes	Yes
WiFi in every bedroom	Yes	Yes	Yes	Yes	Yes	Yes	Yes
Electricity included	Yes	Yes	Yes	Yes	Yes	Yes	Yes
Heating included	Yes	Yes	Yes	Yes	Yes	Yes	Yes
Free TV, Austar/Foxtel/pay TV	Yes	Community areas	Community areas	Community areas	Community areas	Yes	Community areas
On-site community events	Yes	Yes	Yes	Yes	Yes	Yes	Yes
On-site support and wellbeing	Yes	Yes	Yes	Yes	Yes	Yes	Yes
On-site 24 hour security	Yes	Yes	Yes	Yes	Yes	Yes	No
All buildings security card only access	Yes	Yes	Yes	Yes	Yes	Yes	Yes
Wheelchair accessible room and amenities	Yes	Yes	Yes	No	Yes	Yes	Yes
King size single or standard single bed and mattress	Yes	Yes	Yes	Long Single	Queen beds	Yes	Queen beds
Built-in wardrobe, mirror, desk and drawers	Yes	Yes	Yes	Yes	Yes	Yes	Yes
On-site fully equipped laundry with dryers	Yes	Yes	Yes	Yes	Yes	Yes	Yes
On-site low cost café and dining options	No	No	No	Yes	No	No	No
Can request single sex apartment, house or corridor	Yes	Yes	Yes	Yes	Yes	Yes	Yes
Single sex bathrooms available	Yes	Yes	Yes	Shared	Private bathroom	Yes	Private bathroom
Leases tailored to academic year	Yes	Yes	Yes	Yes	min. 50 weeks	min. 52 weeks	min. 42 weeks
On-site car parking (additional fees apply)	Yes	Yes	Yes	Yes	Yes (limited)	No	Yes
Part of a supportive community just for students	Yes	Yes	Yes	Yes	Yes	Yes	Yes
Catering included in weekly cost	No	No	No	Yes	No	No	No

*Costs listed are per week for 2024 and are subject to change and NRAS eligibility. Refer to the website for the most up-to-date information.



West Park Apartments



Hobart Apartments



Jane Franklin Hall

GET INVOLVED

As a resident, there are plenty of events and programs to get involved in. You can keep fit, rug up on a movie night, take art classes, compete in sports, tour the state, and much more.

We're committed to delivering an exceptional student experience that is place-based and uses the whole island as our playground with its unique opportunities available to those lucky enough to live and study here.

Our residents are supported to connect with one another through an immersive welcome and orientation experience. The dedicated Student Living team, which is onsite 9:00AM-Midnight daily, ensures that each resident receives a proper induction into the site and the community. They also regularly connect with each resident to ensure that they are making the most of their student living experience.

We are committed to supporting every student to succeed, and our residents access the most comprehensive network available.



Connection to place and culture

Develop an appreciation for the unique attributes of Tasmania, indigenous cultures, the University and other communities through resident field trips and place-based learning activities.



Shared table

Communities are built over conversations. Develop professional networks and experiences, exchange ideas creatively and intellectually and celebrate the richness of our community over shared meals.



Sustainability

Make meaningful real world contributions to Tasmania and the world through a diverse range of creative challenges. You can also check the sustainability portal for info about student programs and opportunities.



Future readiness and leadership

Establish networks and develop your employability and leadership potential by engaging in experiences that will extend and challenge you within the University, community and industry.



Campus sport

Represent your community in weekly sports competitions including basketball, badminton, futsal, netball and more. You can also access regular fitness, wellbeing, and general health programs.



Arts and performance

Get involved in a wide range of inter-community activities where you will make long-lasting friendships and explore diverse interests recreationally or competitively... well, socially competitively at least.

Safety and security

In addition to on-site security and maintenance, we provide residents in our accommodation with technology, training and support to build a culture of physical and personal safety. This includes security staff who are there 24-hours a day keeping you safe, a SafeZone app giving you easy access to university security and our staff are trained in COVID-safe practices.

Need financial support?

You'll automatically receive the financial support you're eligible for to help with relocating and living costs through our Support to Study Scholarships.

Visit utas.edu.au/scholarships



HOW TO APPLY

Applying for accommodation is easy and can be done online. To get started, register for an account and then follow the steps on the online form.

Our residents are required to reapply every year. However, if you want to keep your room, we'll always do our best to accommodate that.

Visit utas.edu.au/accommodation

"Moving down here was one of the best decisions I've ever made... Hobart is an amazing city."

Kat who moved from Sydney with a scholarship





For more information visit utas.edu.au/accommodation

Published November 2023. For the most up-to-date information please view our website at utas.edu.au | CRICOS 00586B