

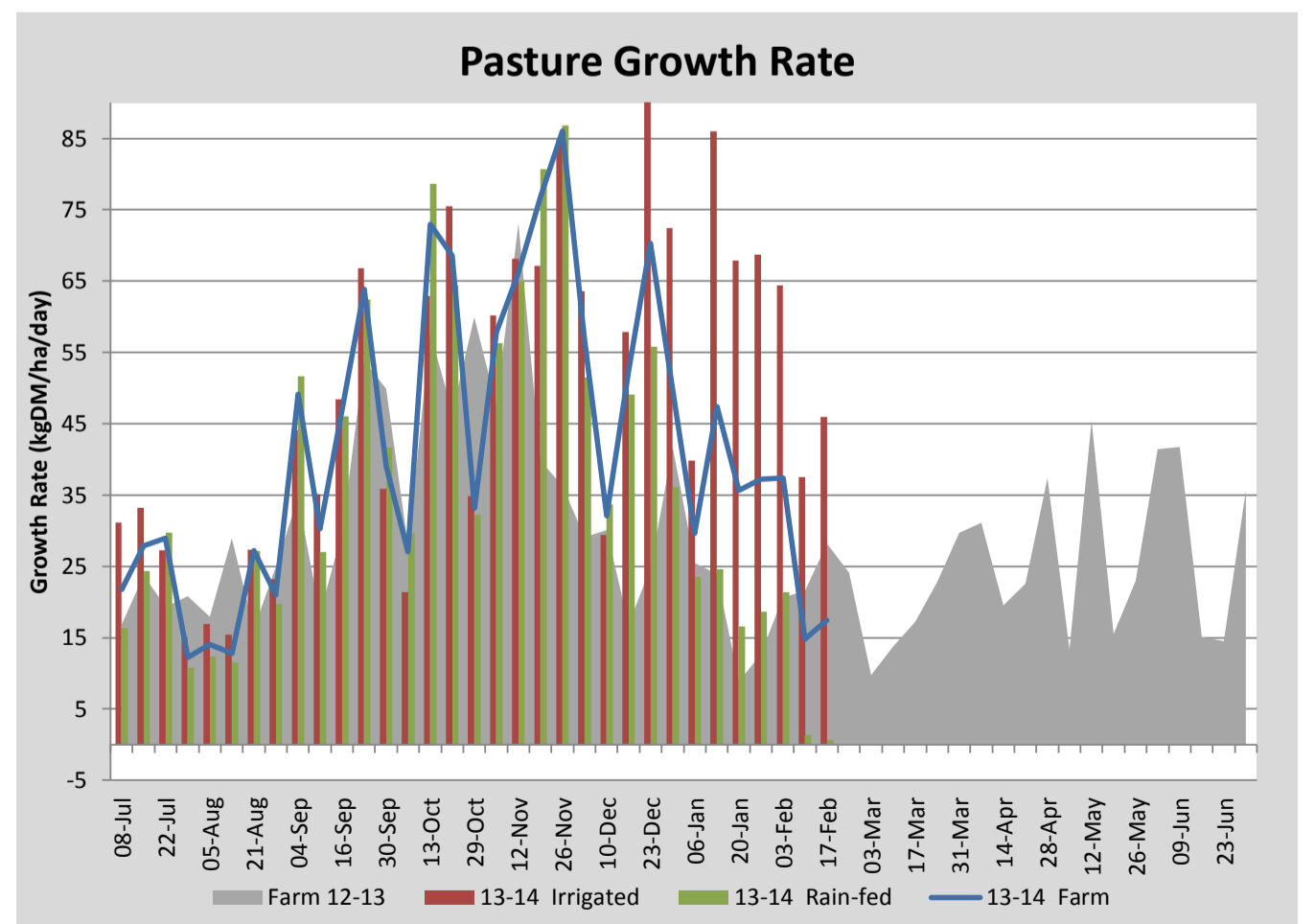
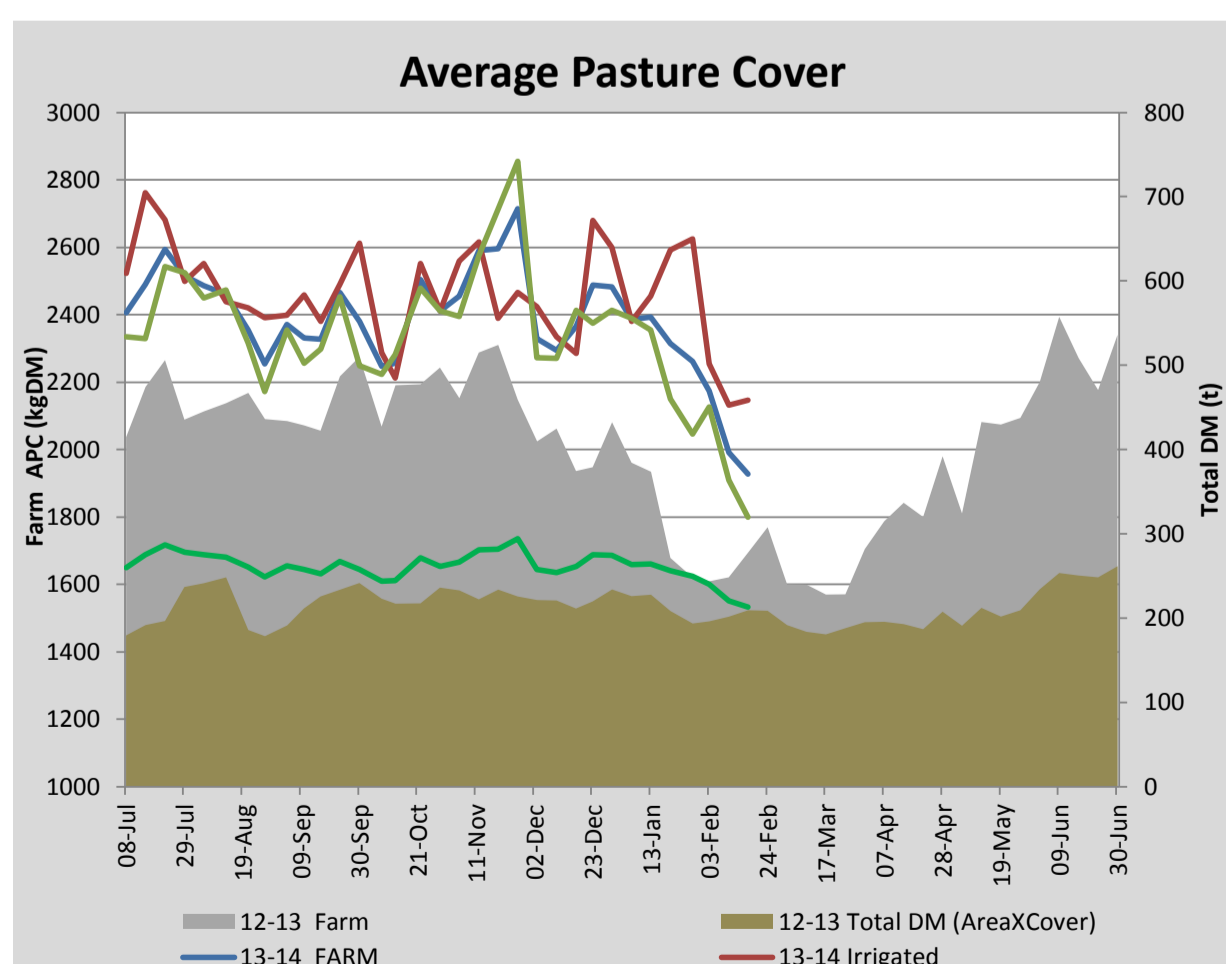
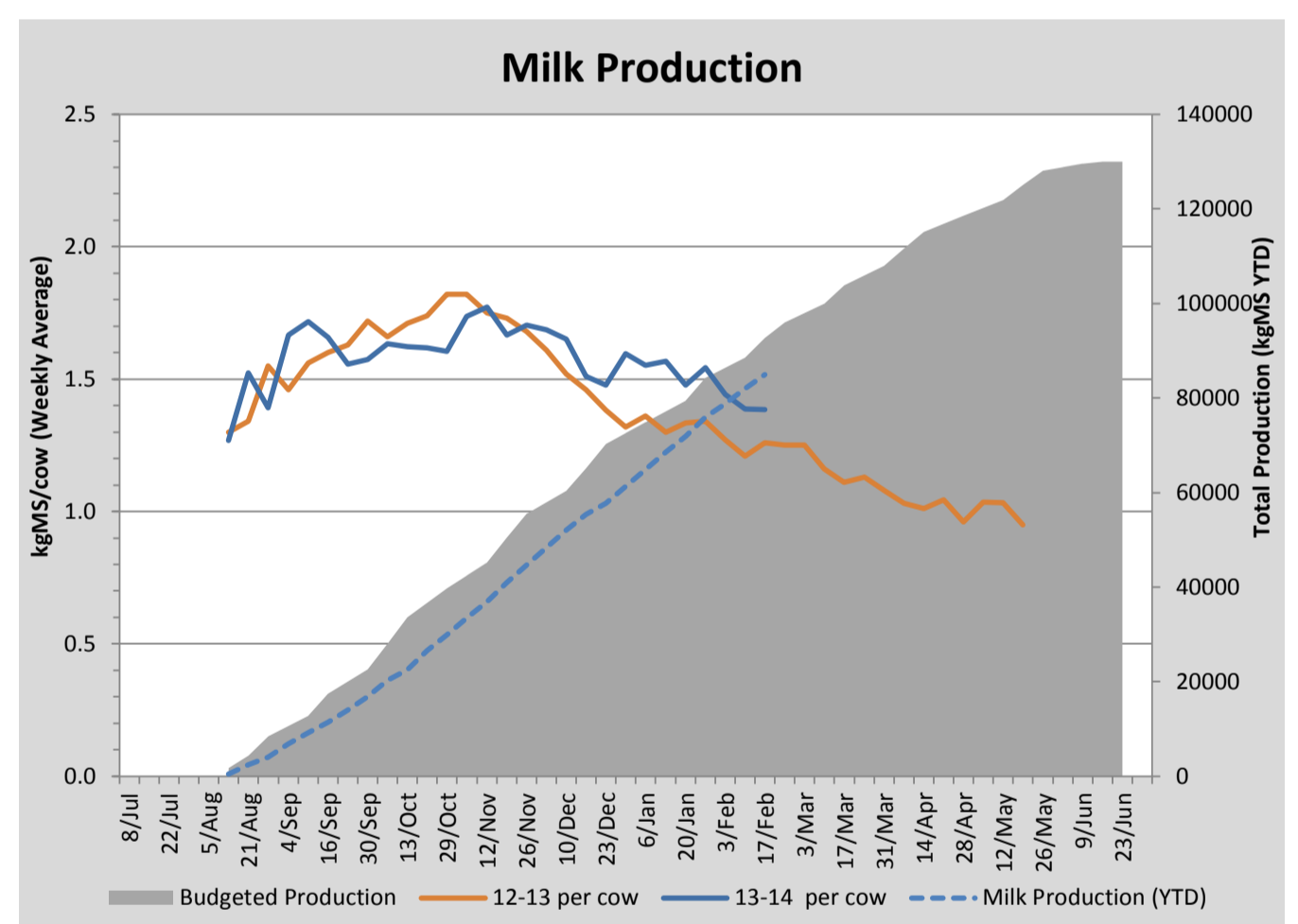
## Key Summary Points

- 1 Average pasture cover continues to decrease this week to 1928kgDM/ha with APC declining on the rainfed portion of the platform. Irrigated cover is holding.
- 2 Per cow milk solid production is holding at 1.39kgMS/cow/day with another 21 cows being dried off this week
- 3 The key focus for the coming week is to build cover on irrigated paddocks by slowing the rotation on these paddocks and ensure timely application of urea.

PASTURE INFORMATION	Farm			Irrigated			Rain-fed		
	Last Week	This Week	Variation	Last Week	This Week	Variation	Last Week	This Week	Variation
Grazed milking area (ha)	110.5	110.5	0.0	41.0	41.0	0.0	69.5	69.5	0
Rotation Length (days)	38	44	6	19	32	13	99	58	-41
Grazing allocation per day (ha)	2.9	2.5	-0.4	2.2	1.3	-0.9	0.7	1.2	0.5
Average time since last grazed (days)	36	48	12	24	32	8	43	57	14
Leaf appearance rate (days per leaf)	12	15	3	9	8	-1	14	19	5
Average Pasture Cover (kgDM/ha)	1991	1928	-64	2132	2145	13	1908	1799	-109
Pasture Growth Rate (kgDM/ha/day)	15	17	3	38	46	8	1	1	-1
Post Grazing Biomass (kgDM/ha)	1428	1400	-28						
Nitrogen applied YTD (kgN/ha)	101	107	6	0	15	15	0	0	0

\*Please note all pasture calculations detailed above are based on the current Grazed Milking Area

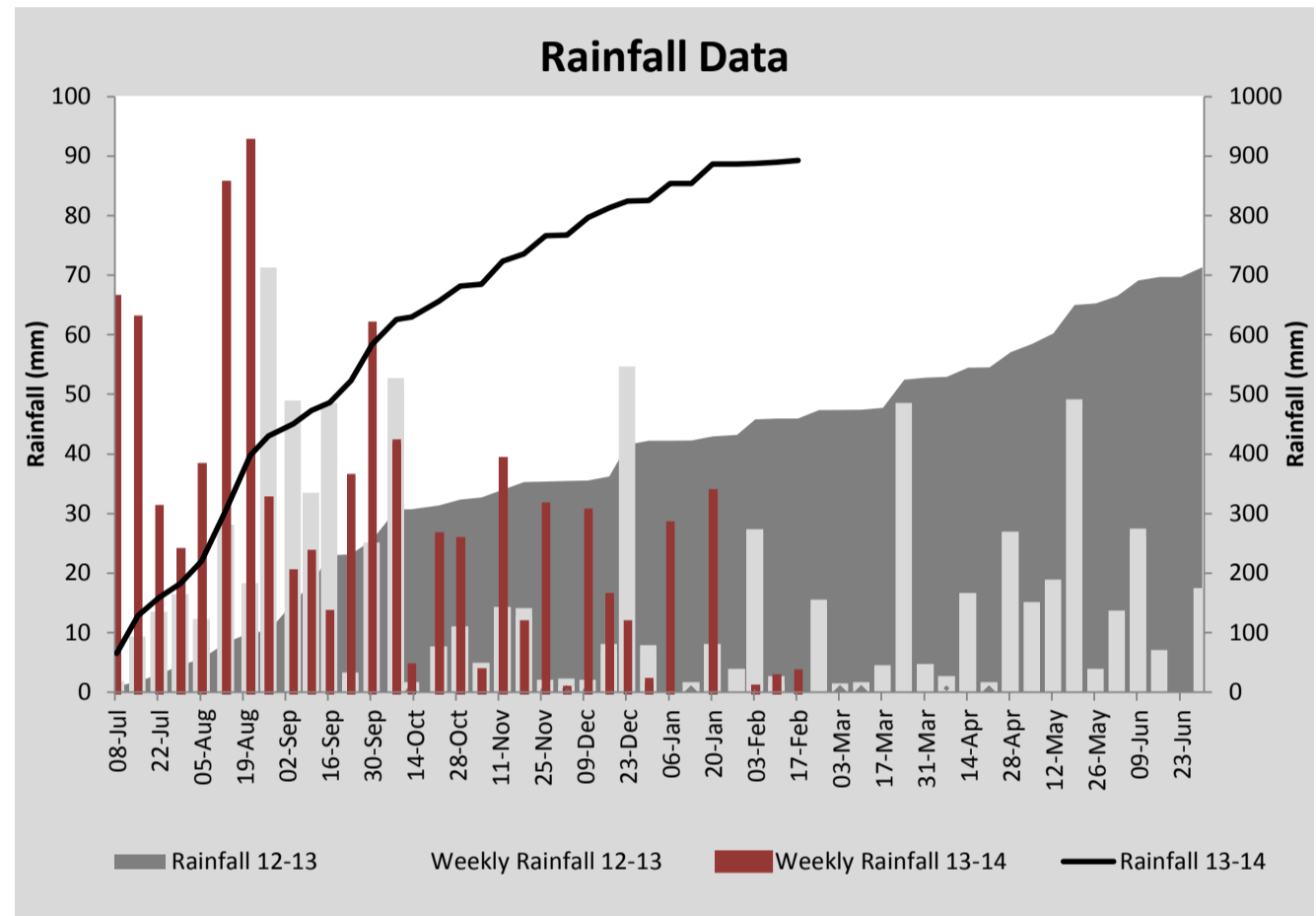
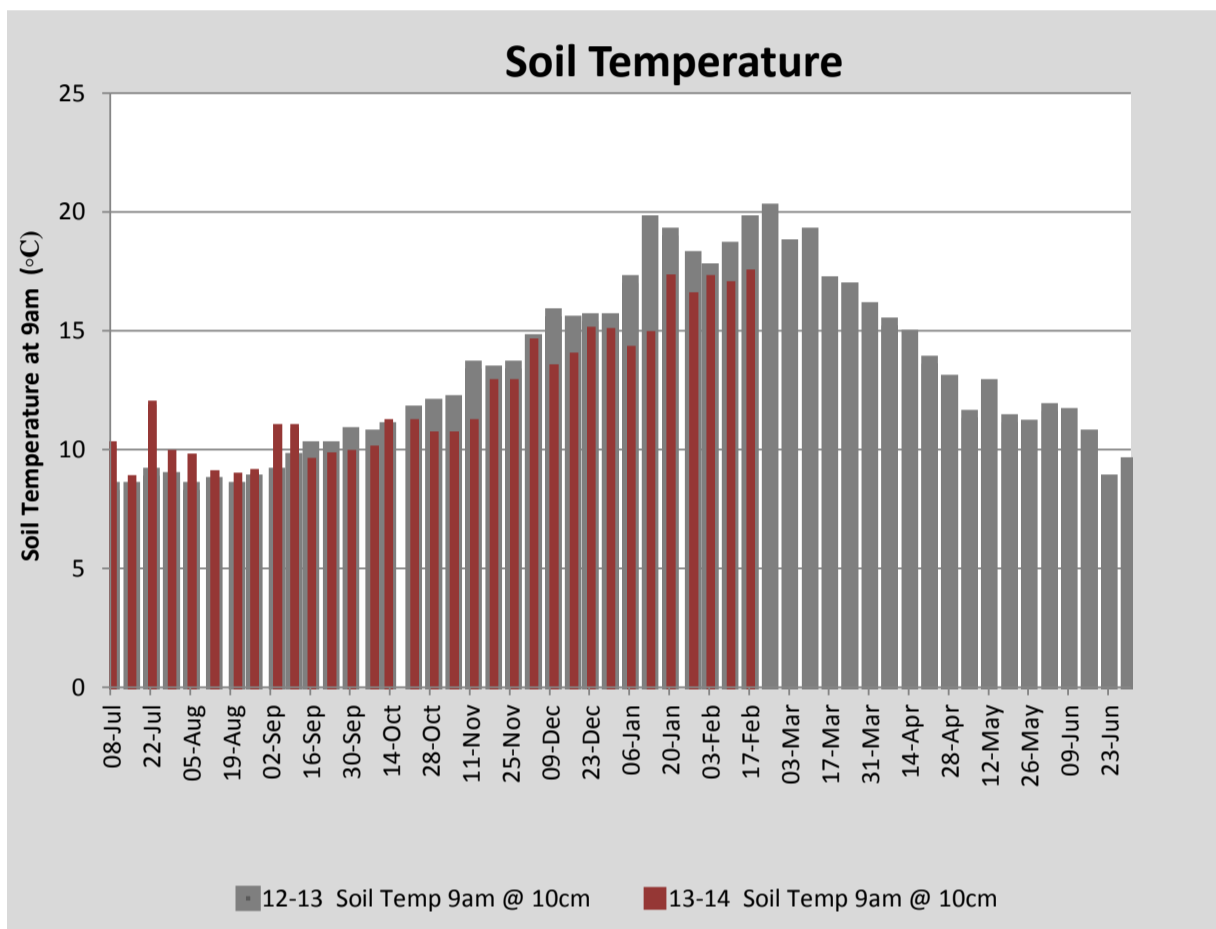
MILK PRODUCTION	Last Week	This Week	Variation
Average No. cows in milk (vat)	328	312	-16
Litres per cow	18.6	18.2	-0.4
% Fat	4.18	4.40	0.22
% Protein	3.30	3.15	-0.15
MS/cow/day	1.39	1.39	-0.00
MS/ha/day	4.02	3.83	-0.20
BMCC	148	111	-37
Average Liveweight (kg)	509	509	0
	Budget	To Date	Variation
Total Milk Production (kgMS)	92,712	85,010	92%
MS/ha YTD	828	803	-25



Last 7 days					
Milkers Diet	kg DM	MJ ME	CP (%)	NDF (%)	\$/cow
Pasture Intake	9.4	11.2	17.7	52.2	0.0
Concentrates	4.5	13.0	11.0	21.0	0.0
Silage	3.1	10.5	15.0	49.0	0.0
Grazed forage	0.0	0.0	0.0	0.0	0.0
Other feeds	0.0	0.0	0.0	0.0	0.0
<b>Total</b>	<b>17</b>	<b>196.3</b>	<b>15.4</b>	<b>43.3</b>	<b>0</b>
<b>Target</b>		<b>191</b>	<b>16-18</b>	<b>&gt;33</b>	<b>0</b>

	Rainfed Pasture (Ryegrass)	Irrigated Pasture (Cocksfoot/Ryegrass)
MJ ME	11.3	11.1
CP (%)	12.8	22.6
NDF (%)	51.1	53.2

Rainfed vs. irrigated pasture feed quality



Analysis			
Expected growth rate next 7 days (kgDM/ha/day)	17	Target Leaf Grazing Stage	3.0
Total Demand from Pasture (kgDM/ha/day)	25	Predicted APC 7 days time	1873
APC balance (kgDM/ha/day)	-8	Predicted APC Change	-54.4

## Discussion

Average pasture cover continued to decrease this week to 1928kgDM/ha, 40kg less than the predicted APC of 1968kgDM/ha. The irrigated feed wedge has held at 2145kgDM/ha this week which is below the target of 2250kgDM/ha. We will look to increase the average pasture cover on the irrigated platform in the coming week by slowing the rotation on these paddocks and increase the silage allocation. By doing this we hope to maximise the response from urea applied this week. Urea was applied to 15.8ha of the irrigated platform at 40kgN/ha, spreading between 4 days pre and 7 days post grazing. Per cow MS production is holding this week at 1.39kgMS/cow/day, with another 21 cows are being dried off this week. The lucerne crop was cut for the first time on Thursday and will be baled for hay early next week.

# 17 February 2014

