

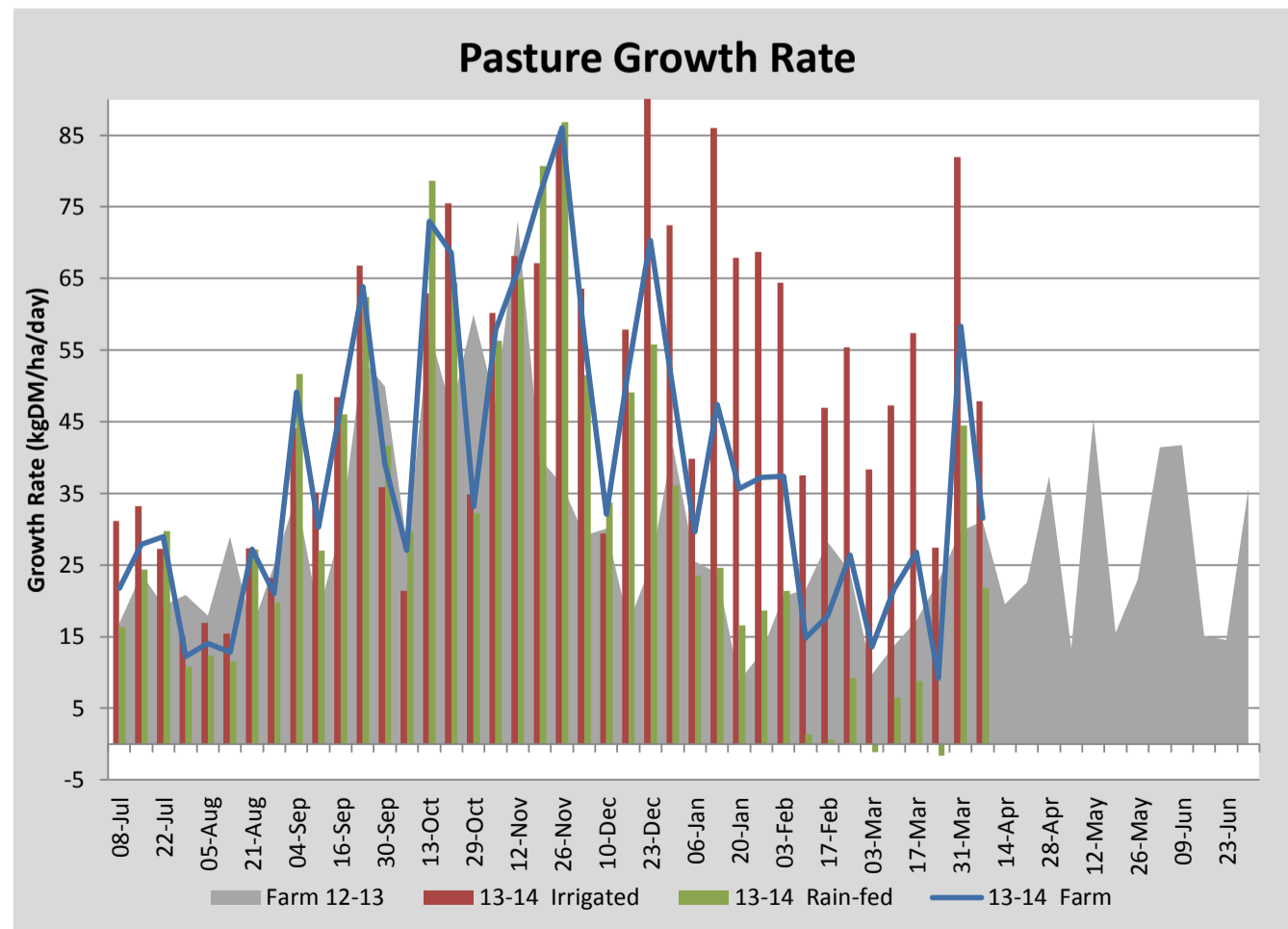
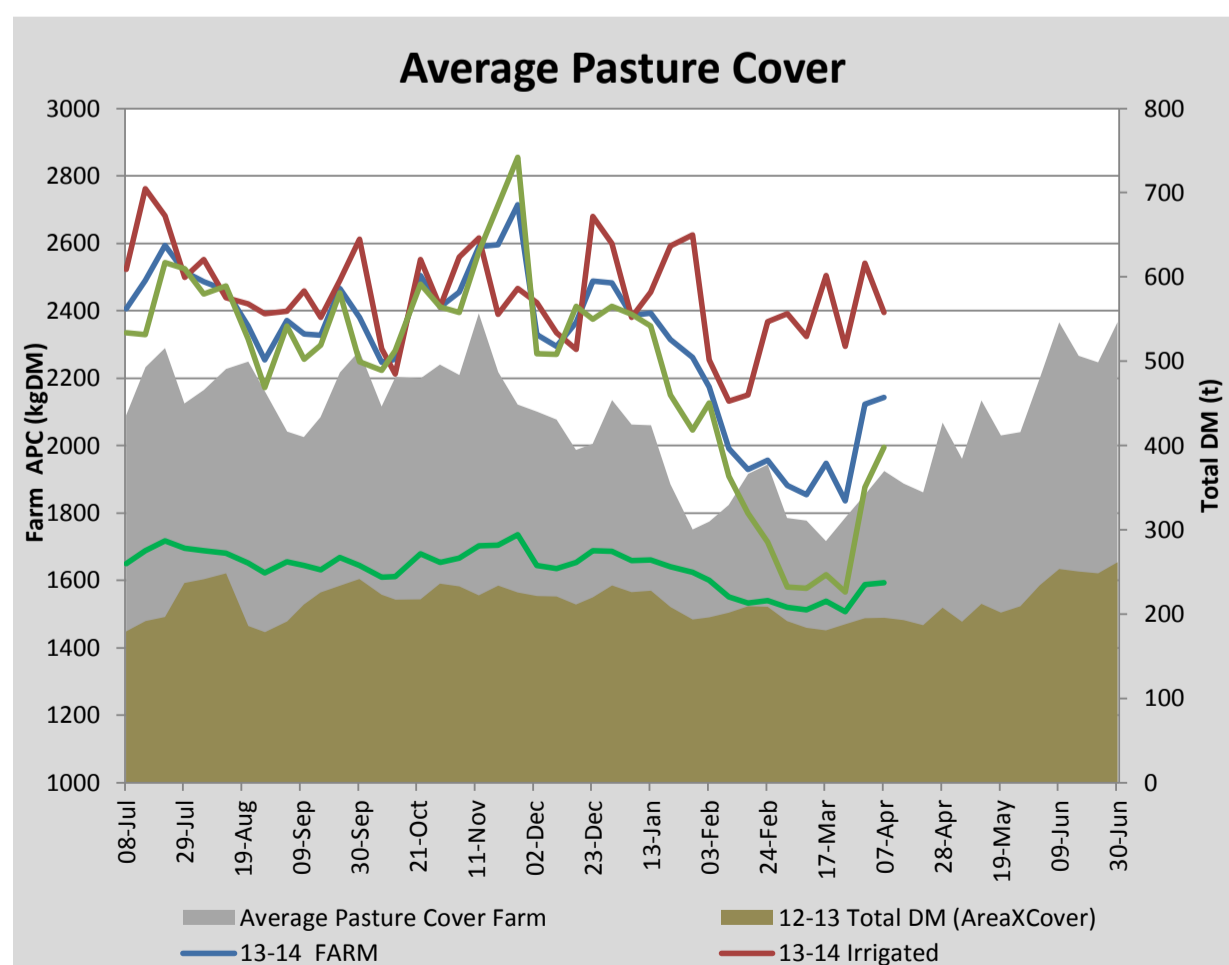
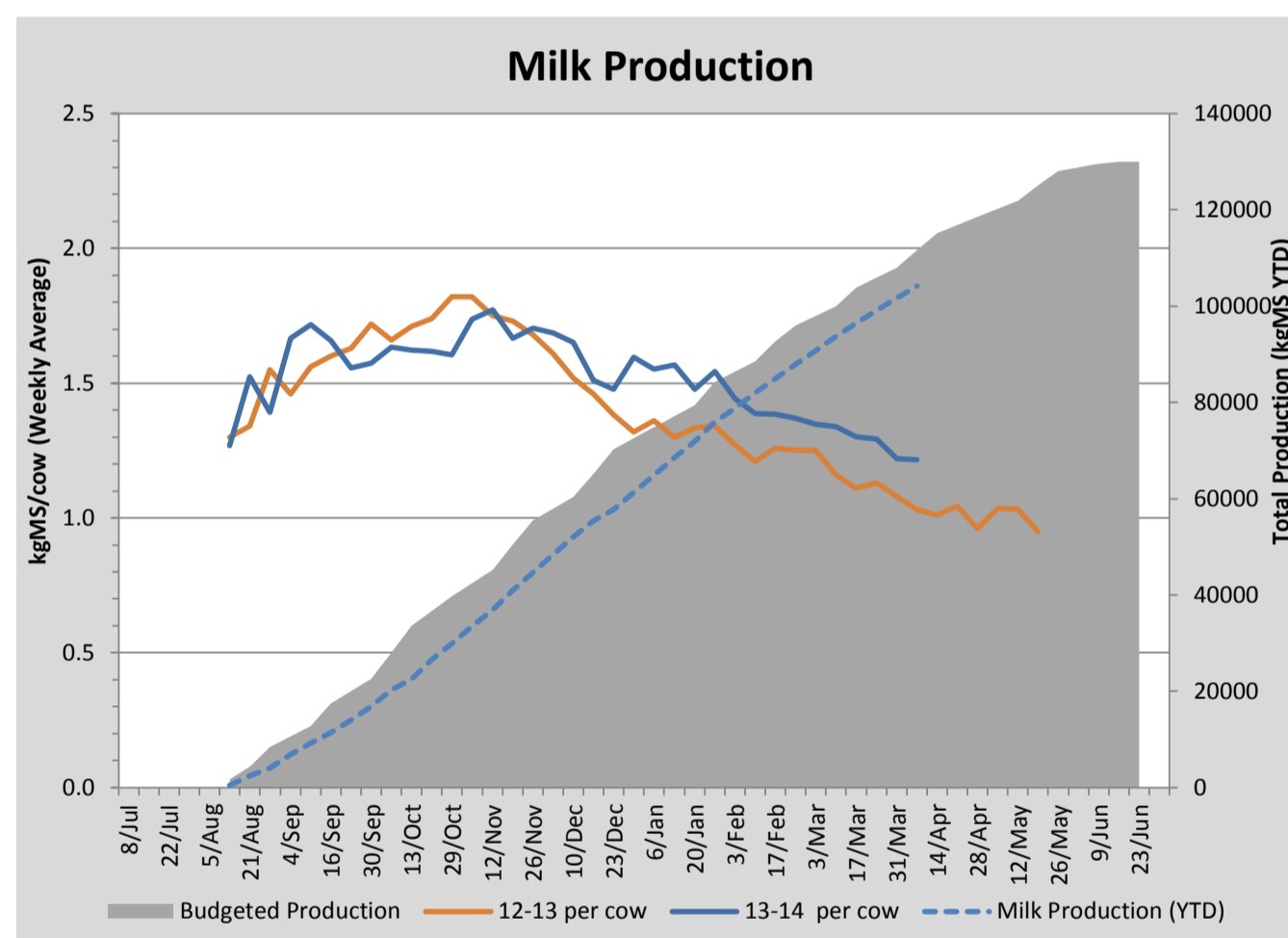
## Key Summary Points

- 1 Average pasture cover has built slightly this week to 2143kgDM/ha
- 2 Per cow milk solid production has held at 1.22kgMS/ha
- 3 R1 and R2 heifer were weighed this week. R1s remain close to target at 172kg average. The R2's are a little behind target at 384kg average.

PASTURE INFORMATION	Farm			Irrigated			Rain-fed		
	Last Week	This Week	Variation	Last Week	This Week	Variation	Last Week	This Week	Variation
Grazed milking area (ha)	110.5	110.5	0.0	41.0	41.0	0.0	69.5	69.5	0
Rotation Length (days)	74	65	-9	27	24	-3	0	0	0
Grazing allocation per day (ha)	1.5	1.7	0.2	1.5	1.7	0.2	0.0	0.0	0.0
Average time since last grazed (days)	#N/A	#N/A	#N/A	33	33	-0	N/A	N/A	N/A
Leaf appearance rate (days per leaf)	16	15	-1	12	12	0	19	17	-2
Average Pasture Cover (kgDM/ha)	2123	2143	20	2541	2395	-145	1876	1994	117
Pasture Growth Rate (kgDM/ha/day)	58	31	-27	82	48	-34	44	22	-23
Post Grazing Biomass (kgDM/ha)	1782	1587	-195						
Nitrogen applied YTD (kgN/ha)	133	133	0	0	0	0	20	0	-20

\*Please note all pasture calculations detailed above are based on the current Grazed Milking Area

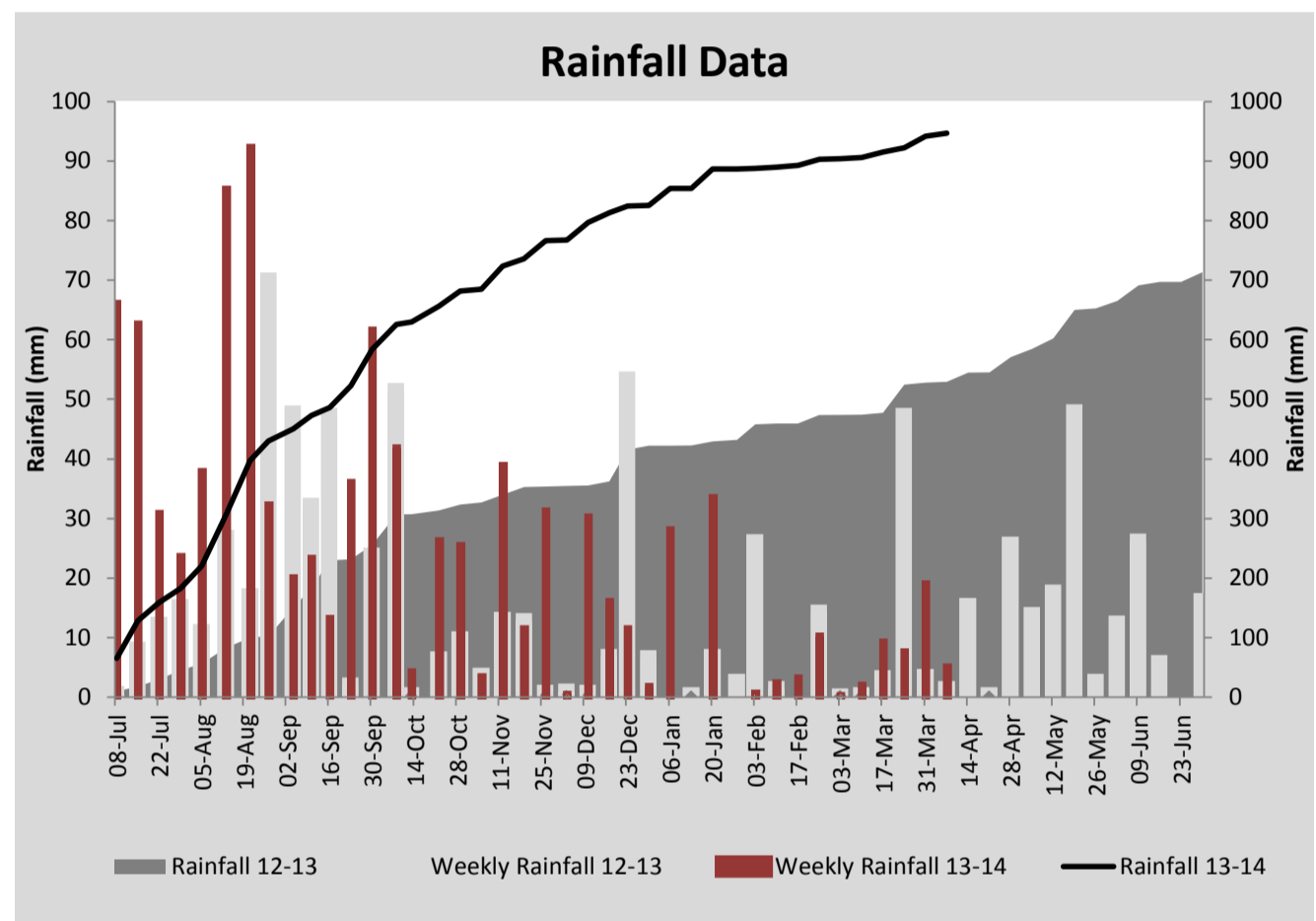
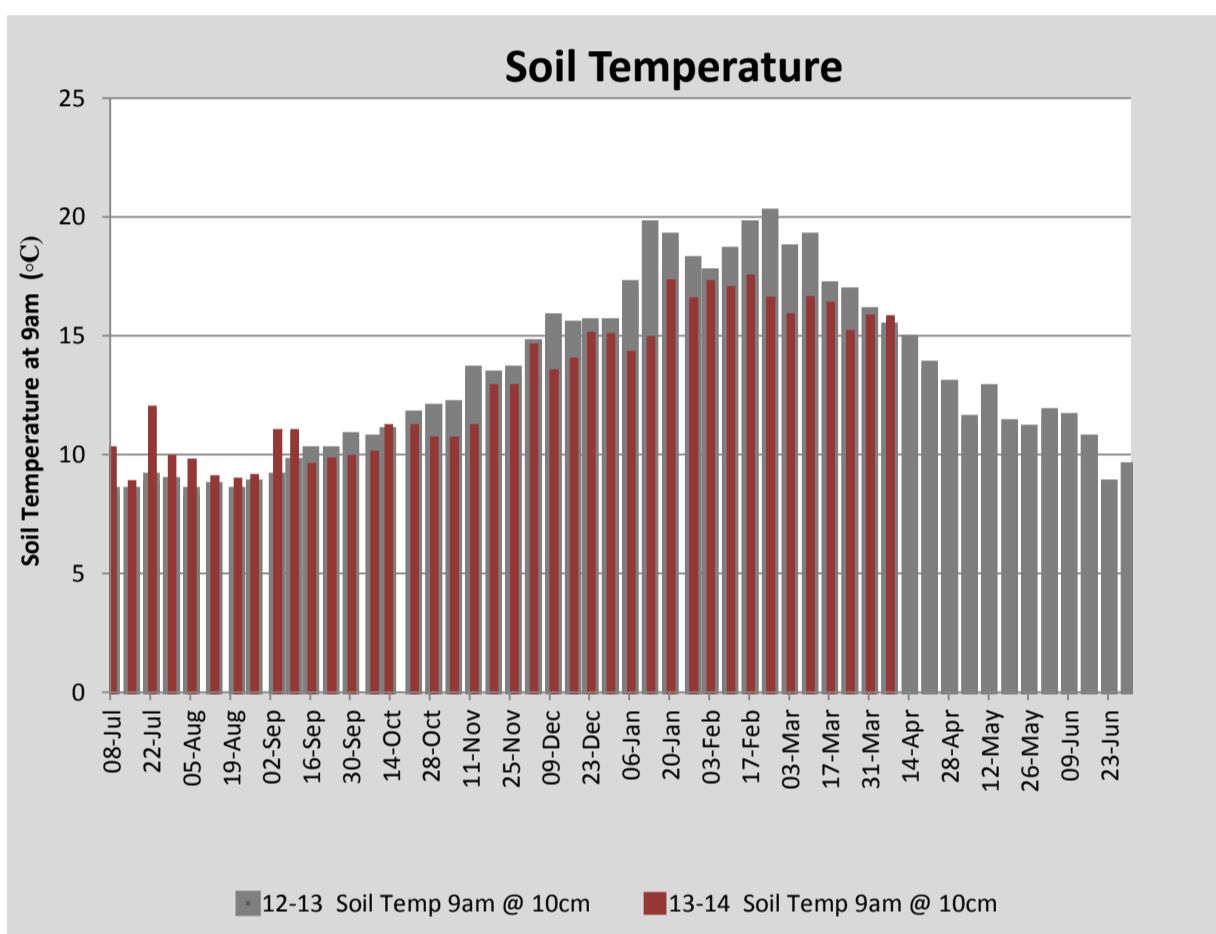
MILK PRODUCTION	Last Week	This Week	Variation
Average No. cows in milk (vat)	299	298	-1
Litres per cow	14.3	14.5	0.1
% Fat	4.97	4.91	-0.07
% Protein	3.40	3.53	0.13
MS/cow/day	1.22	1.22	-0.01
MS/ha/day	3.23	3.21	-0.02
BMCC	164	148	-16
Average Liveweight (kg)	528	528	0
	Budget	To Date	Variation
Total Milk Production (kgMS)	111,597	104,191	93%
MS/ha YTD	996	976	-20



Last 7 days					
Milkers Diet	kg DM	MJ ME	CP (%)	NDF (%)	\$/cow
Pasture Intake	9.1	11.7	24.0	54.7	0.0
Concentrates	5.8	13.0	11.0	21.0	0.0
Silage	2.1	10.0	13.6	54.8	0.0
Grazed forage	0.0	0.0	0.0	0.0	0.0
Other feeds	0.0	0.0	0.0	0.0	0.0
<b>Total</b>	<b>17</b>	<b>202.8</b>	<b>18.3</b>	<b>43.3</b>	<b>0</b>
<b>Target</b>	<b>191</b>	<b>16-18</b>	<b>&gt;33</b>	<b>0</b>	<b>0</b>



Effluent ponds were emptied this week, with approximately 0.6ML of slurry being applied to 5.1ha of the milking platform. A sample of the slurry is being dried to determine the nutrient composition.



Analysis			
Expected growth rate next 7 days (kgDM/ha/day)	31	Target Leaf Grazing Stage	3.0
Total Demand from Pasture (kgDM/ha/day)	24	Predicted APC 7 days time	2191
APC balance (kgDM/ha/day)	7	Predicted APC Change	48.1

## Discussion

Average pasture cover built again this week with respectable growth occurring on both the irrigated and rain fed paddocks. With the hole in the feed wedge starting to fill, we will look to start including some rain fed paddocks back into the rotation this coming week. Per cow milk solid production has held this week with the total DM allocation being increased by 0.5 kg to 17kgDM/cow/day. R1 and R2 heifers were weighed this week. R1 heifers are close to target averaging 172kg. The R2 heifers are a little behind target at 384kg. We have restricted the intake of the R2 heifers over the past month to maintain APC on the run off and preserve stored hay and silage reserves. Heifers have also been used to graze off rough areas of the run off so as to preserve the better quality grass for the R1s meaning that pasture quality has also been a limiting factor. Now that cover is building on the run off we will look to boost daily allocation to between 8 - 9kgDM/head/day, supplementing with silage if required. Effluent ponds were emptied this week with 0.6ML of slurry being spread across 5.1 ha of the milking platform. A sample of the slurry has been taken to determine the amount of nutrient applied to these paddocks.

# 7 April 2014

