

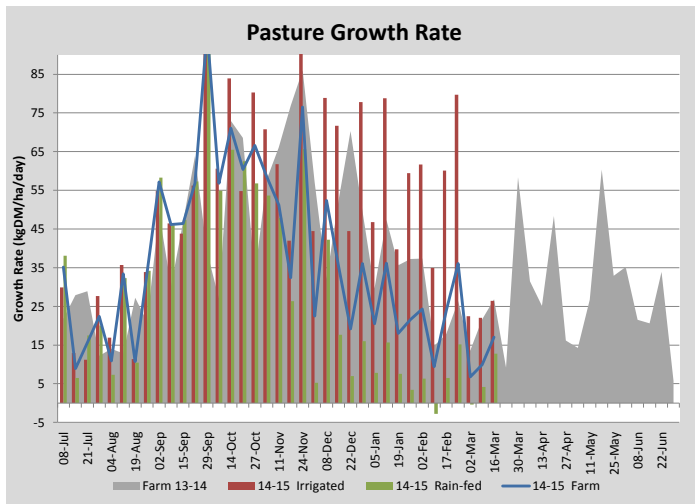
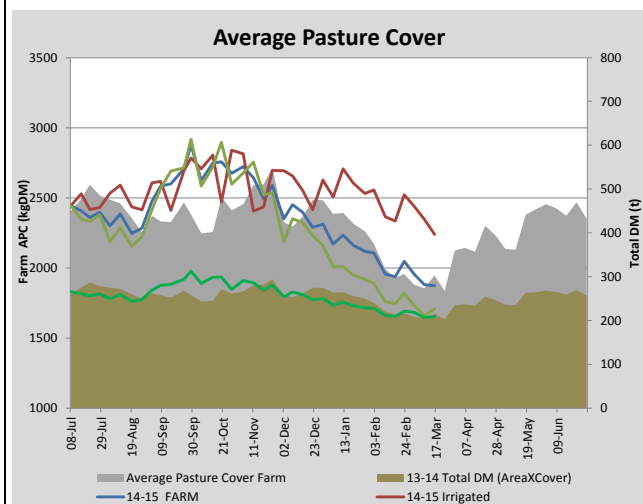
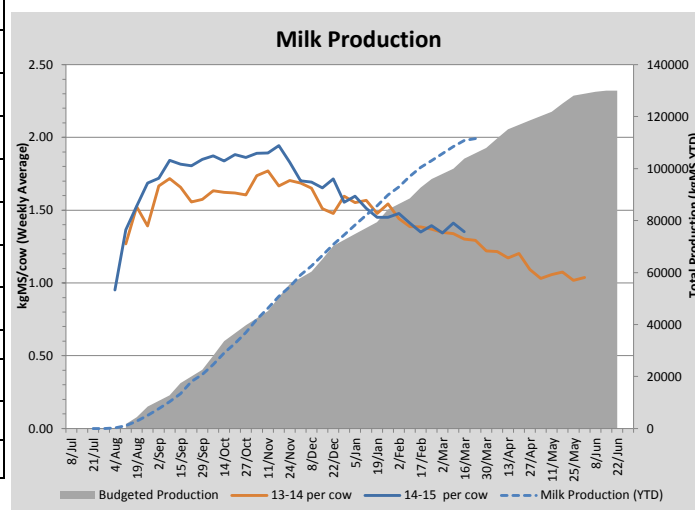
Key Summary Points

- 1** Pasture covers across the farm have remained reasonably stable with a decline in irrigated cover and a slight increase in dryland covers.
- 2** A realignment of a few paddocks has slightly increased the total area available to the herd.
- 3** The clover/plantain sections of the More Milk From Forage areas (total of 8.5 ha) have been lightly disced and sown down with Base ryegrass.

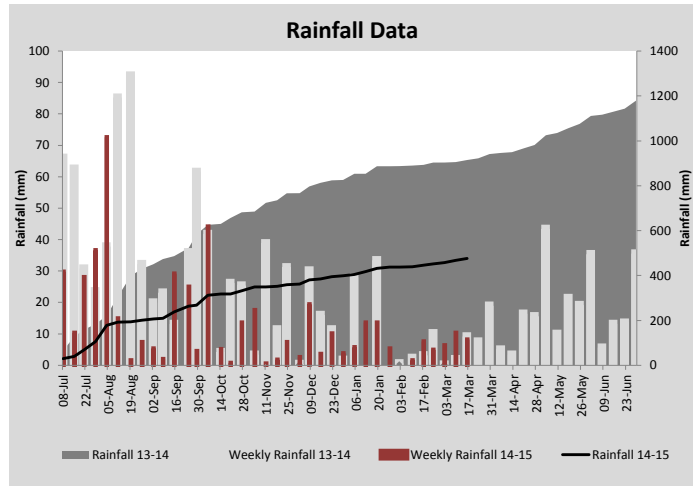
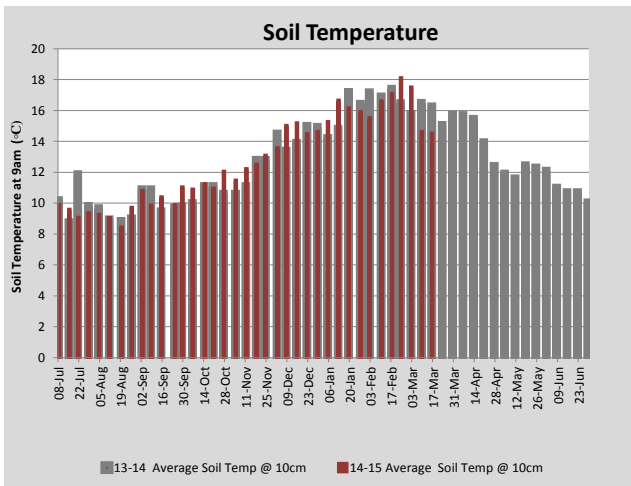
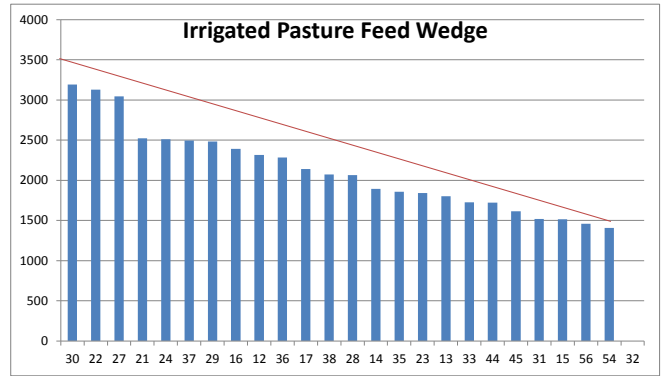
PASTURE INFORMATION	Farm			Irrigated			Rain-fed		
	Last Week	This Week	Variation	Last Week	This Week	Variation	Last Week	This Week	Variation
Grazed milking area (ha)	109.7	111.9	2.2	40.5	35.1	-5.4	71.4	76.8	5
Rotation Length (days)	58	66	8	32	35	3	93	110	16
Grazing allocation per day (ha)	1.9	1.7	-0.2	1.1	1.0	-0.1	0.8	0.7	-0.1
Average time since last grazed (days)	62	66	5	35	36	1	74	80	6
Leaf appearance rate (days per leaf)	19	20	0	12	12	0	23	23	0
Average Pasture Cover (kgDM/ha)	1880	1874	-5	2346	2240	-106	1660	1707	47
Pasture Growth Rate (kgDM/ha/day)	10	17	7	22	26	4	4	13	9
Post Grazing Biomass (kgDM/ha)	1490	1450	-40						
Nitrogen applied YTD (kgN/ha)	133	137	4	0	13	13	0	0	0

*Please note all pasture calculations detailed above are based on the current Grazed Milking Area

MILK PRODUCTION	Last Week	This Week	Variation
Average No. cows in milk (vat)	282	282	0
Litres per cow	17.1	16.2	-0.9
% Fat	4.75	4.84	0.08
% Protein	3.41	3.59	0.18
MS/cow/day	1.41	1.35	-0.06
MS/ha/day	3.52	3.37	-0.15
BMCC	181	167	-14
Average Liveweight (kg)	536	537	1
	Budget	To Date	Variation
Total Milk Production (kgMS)	103,851	110,821	107%
MS/ha YTD	927	1033	106



Last 7 days					
Milkers Diet	kg DM	MJ ME	CP (%)	NDF (%)	\$/cow
Pasture Intake	8.4	11.5	16.4	45.0	0.0
Concentrates	5.5	12.0	16.0	16.5	0.0
Silage	3.1	11.0	15.0	49.0	0.0
Grazed forage	0.0	0.0	0.0	0.0	0.0
Other feeds	0.0	0.0	0.0	0.0	0.0
Total	17	196.7	16.0	36.5	0
Target		191	16-18	>33	0



Analysis			
Expected growth rate next 7 days (kgDM/ha/day)	15	Target Leaf Grazing Stage	2.5-3.0
Total Demand from Pasture (kgDM/ha/day)	10	Predicted APC 7 days time	1915
APC balance (kgDM/ha/day)	6	Predicted APC Change	40.6

Discussion

With a slight realignment of a few paddocks on the farm the total area available to the dairy cows on the milking platform has increased from 108 ha to almost 112 ha. Although total farm area has increased slightly the increase is entirely dryland paddocks and as such are not contributing any extra pasture at this time. The clover/plantain sections of the MMFF trial areas being lightly worked (disced) and resown this week. This area (8.5 ha) will be unavailable for grazing on the milking platform until the new grass is ready to be grazed. Nitrogen was applied to grazed irrigated paddocks this week at a rate of 30 kg N/ha.

16 March 2015

