

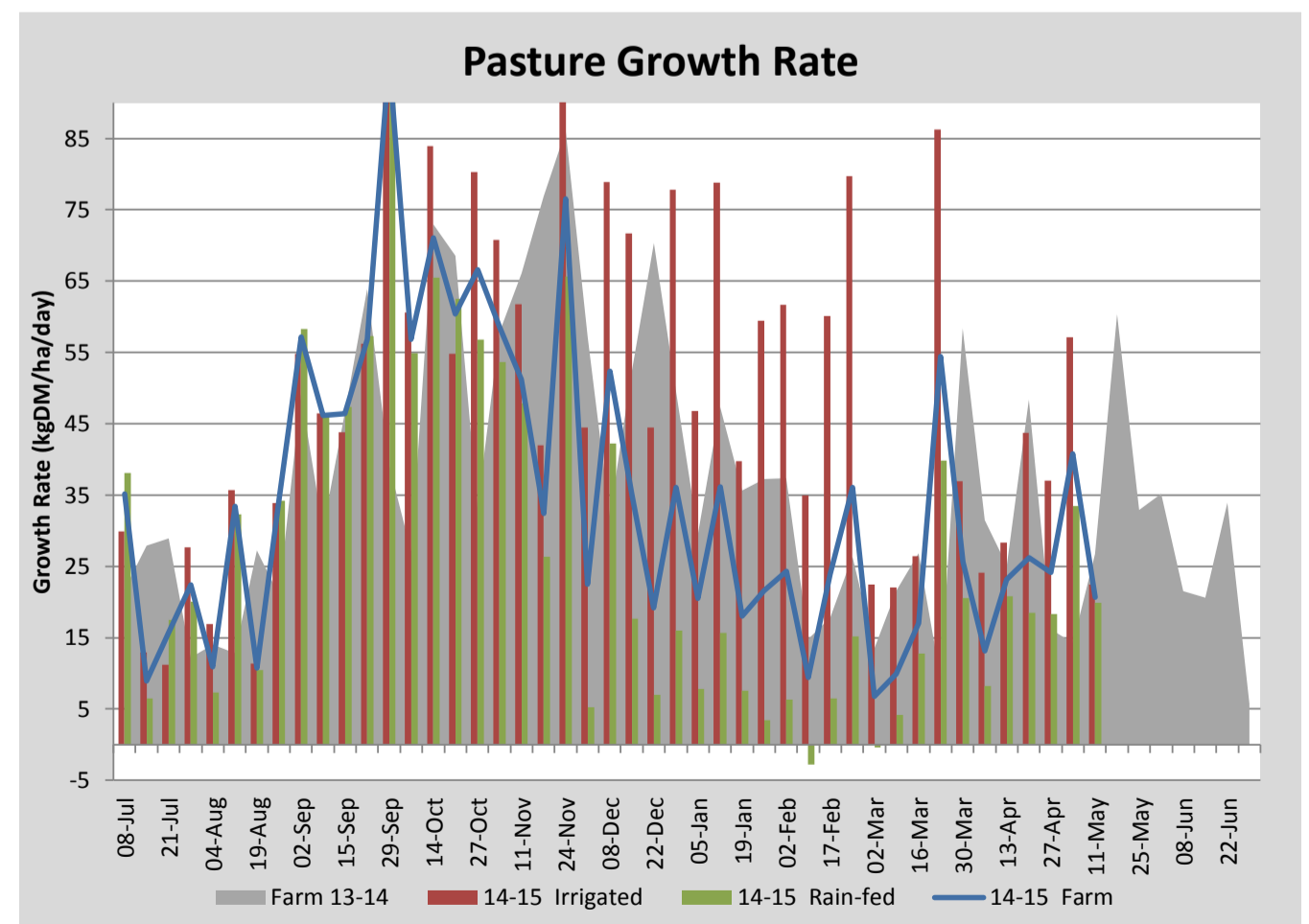
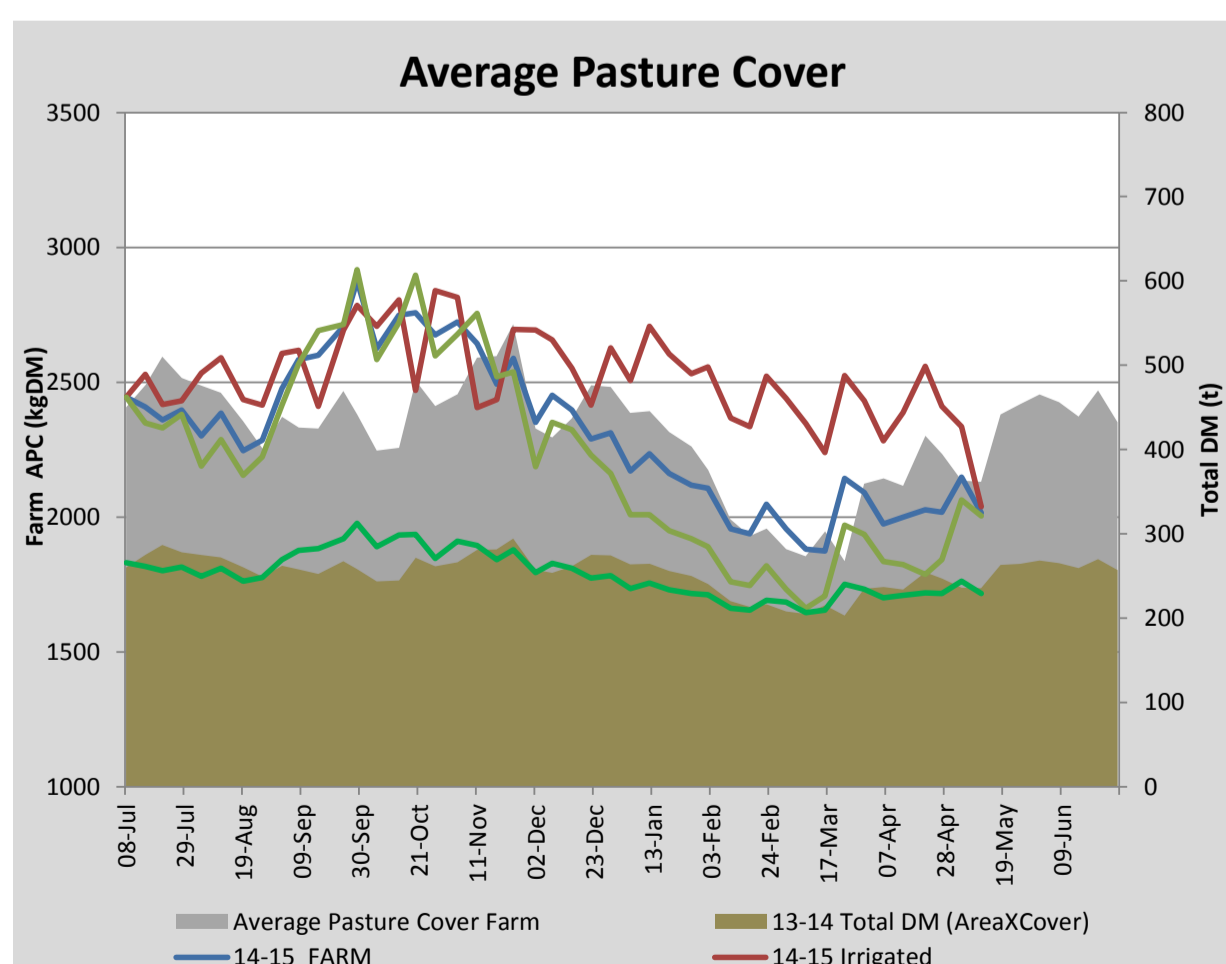
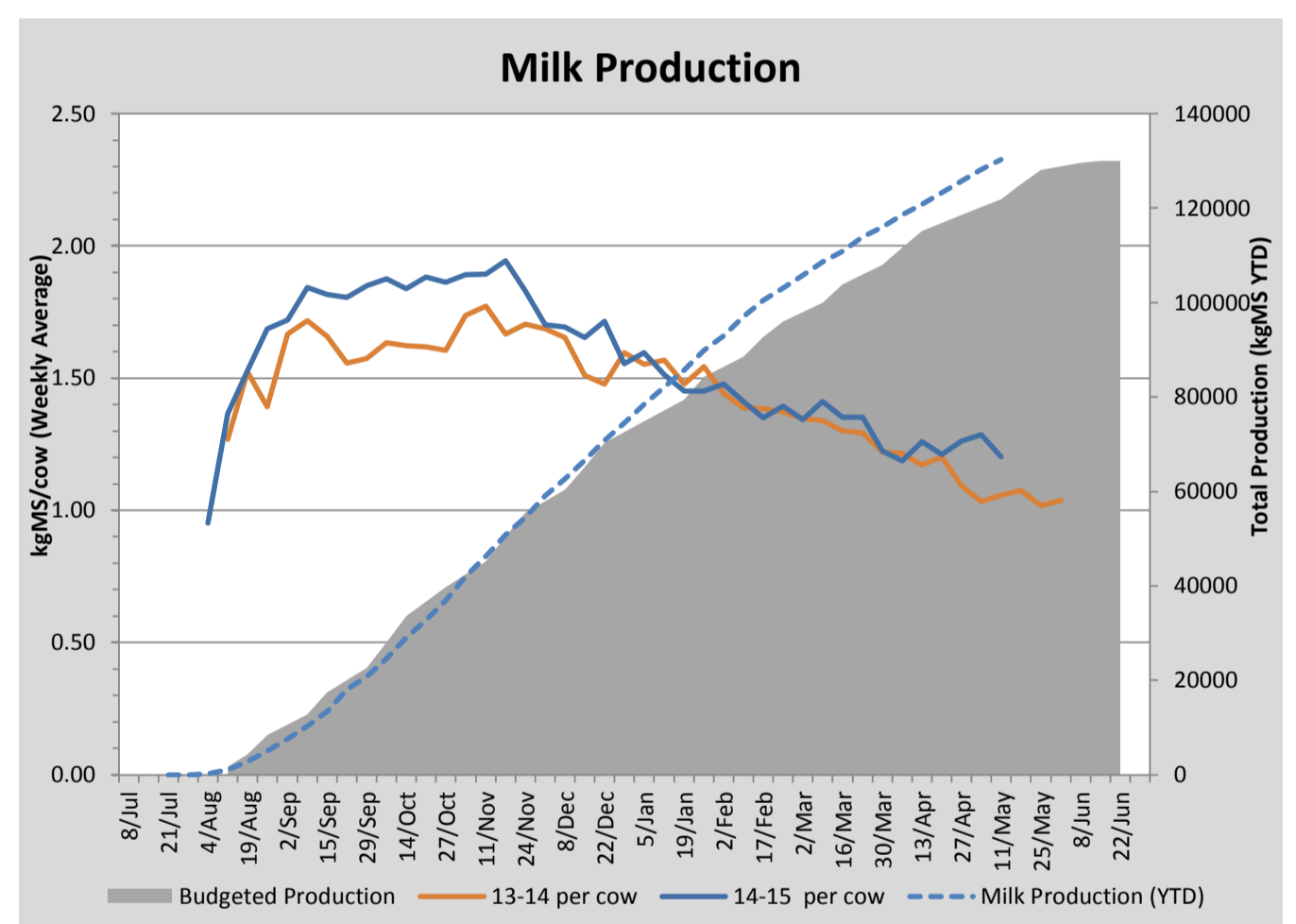
Key Summary Points

- 1** Average pasture cover decreased significantly this week to 2015 kg DM/ha due to cooler temperatures and overcast conditions which resulted in a drop in pasture growth rates on both the irrigated and dryland paddocks.
- 2** Per cow milk solid production also dropped last week with the bad weather to 1.2kgMS/cow/day.
- 3** The focus for the coming week is to, when weather permits, pump out the remaining effluent in the storage pond and spread the stockpiled solids in preparation for winter.

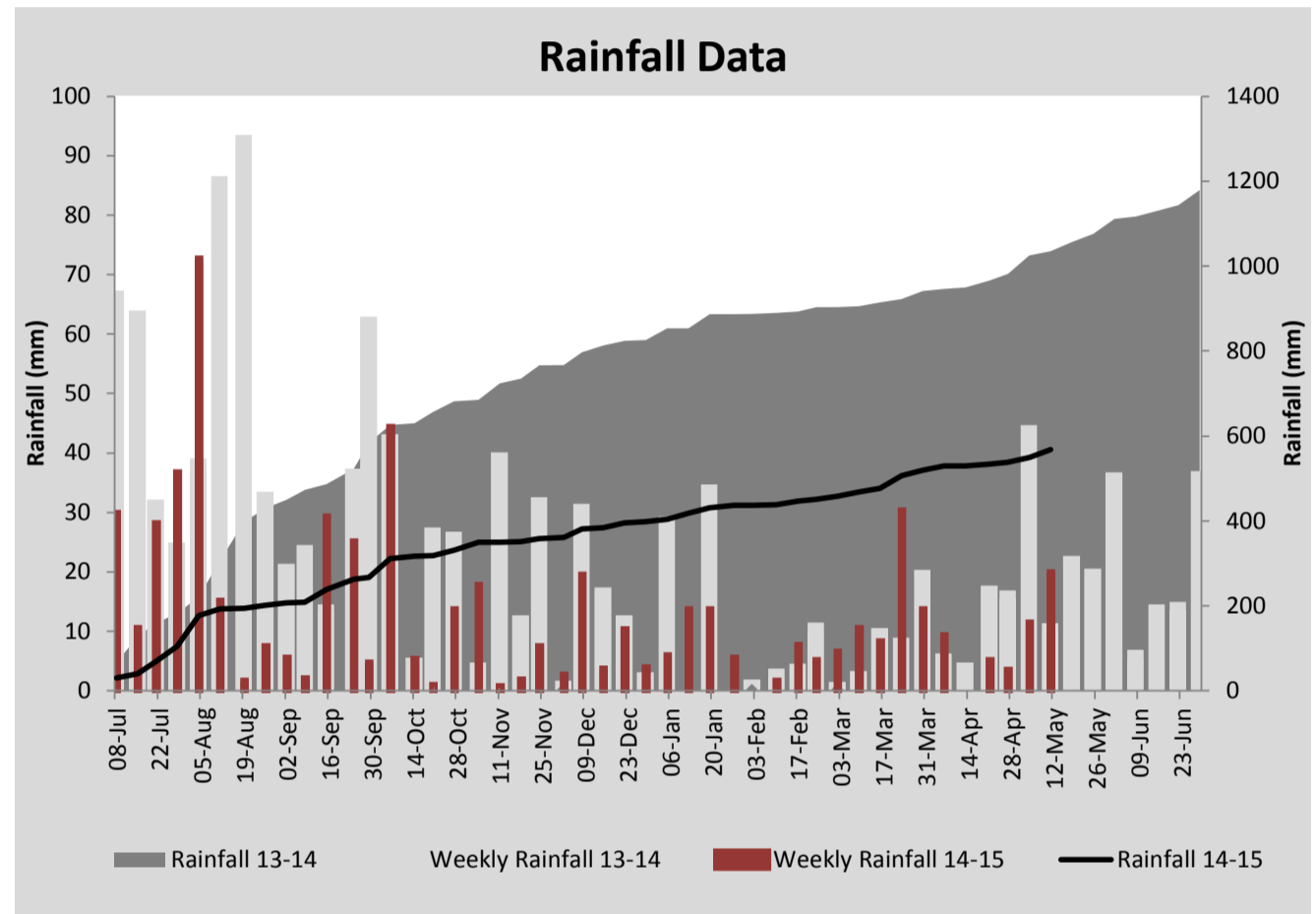
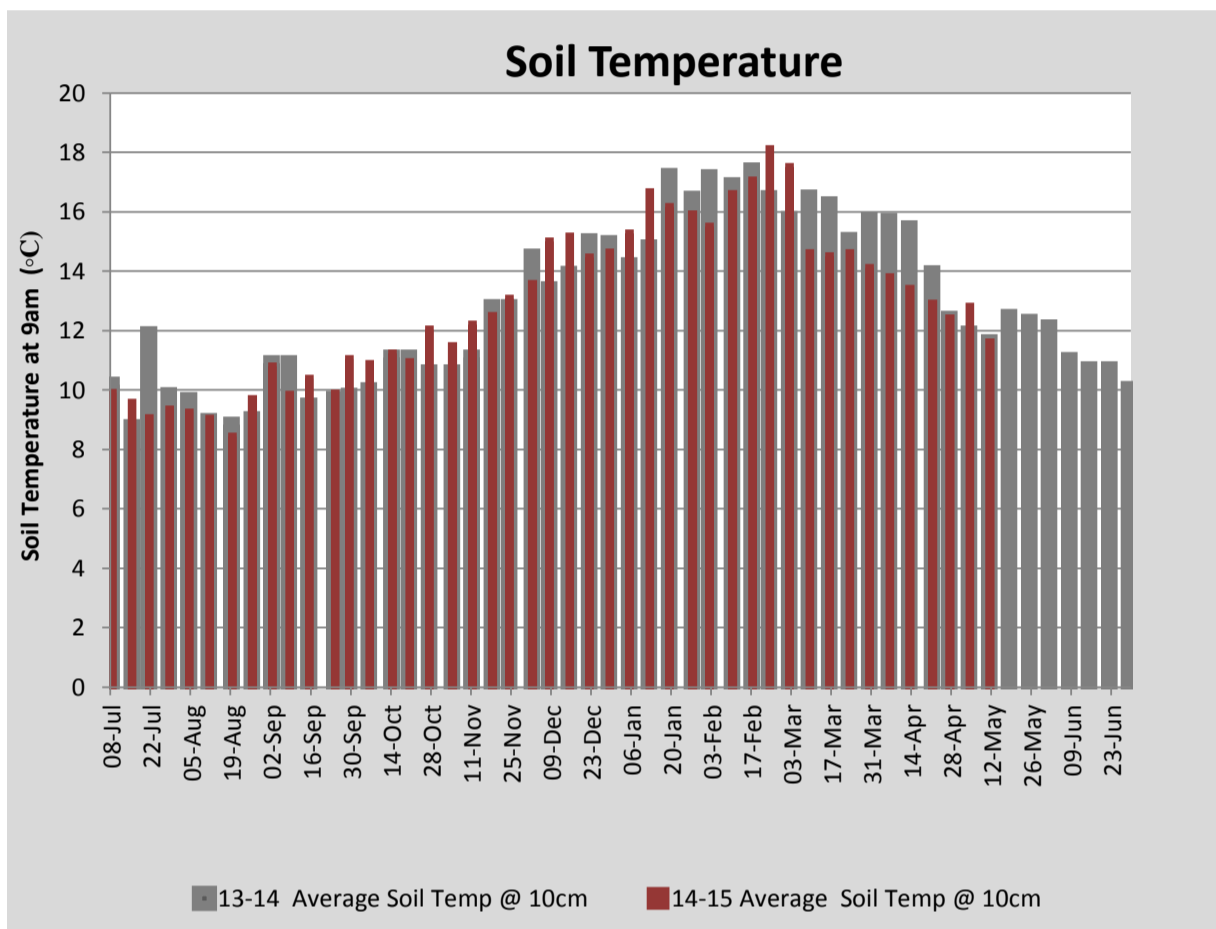
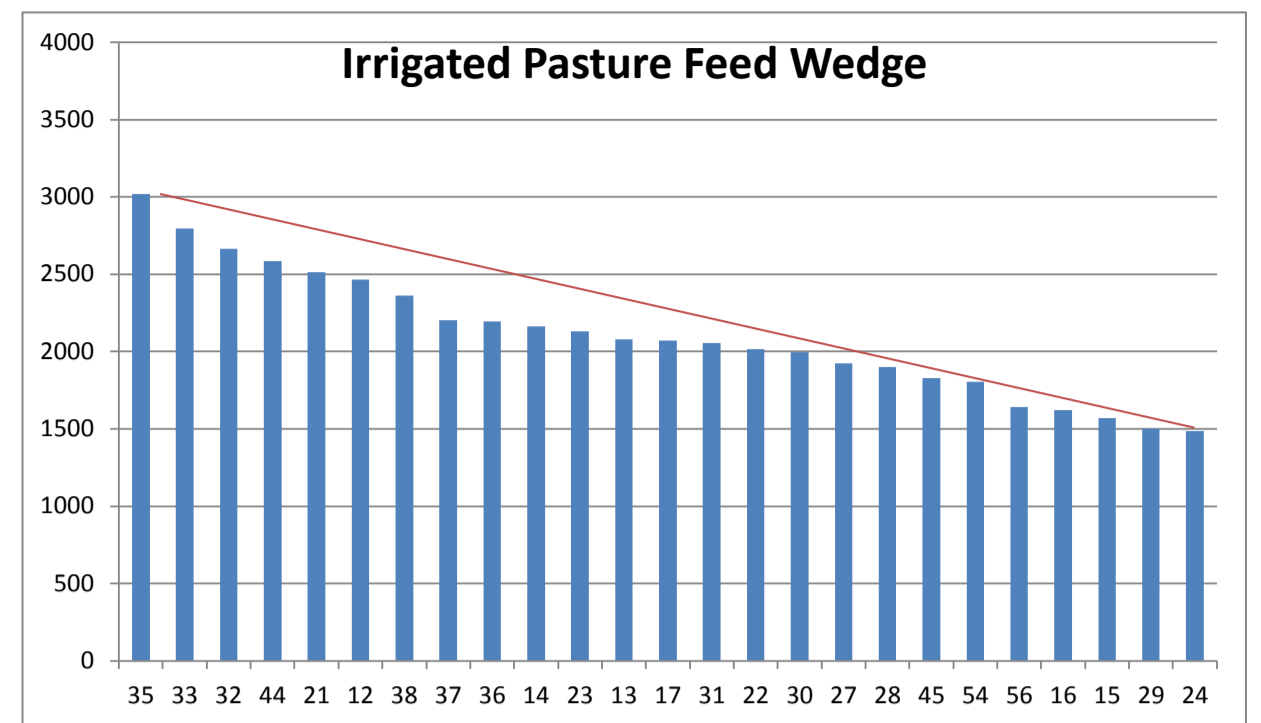
| PASTURE INFORMATION | Farm | | | Irrigated | | | Rain-fed | | |
|---------------------------------------|-----------|-----------|-----------|-----------|-----------|-----------|-----------|-----------|-----------|
| | Last Week | This Week | Variation | Last Week | This Week | Variation | Last Week | This Week | Variation |
| Grazed milking area (ha) | 113.6 | 113.6 | 0.0 | 40.5 | 35.1 | -5.4 | 73.1 | 78.4 | 5 |
| Rotation Length (days) | 87 | 63 | -24 | 50 | 29 | -21 | 131 | 131 | 0 |
| Grazing allocation per day (ha) | 1.3 | 1.8 | 0.5 | 0.7 | 1.2 | 0.5 | 0.6 | 0.6 | 0.0 |
| Average time since last grazed (days) | 53 | 62 | 9 | 43 | 43 | 0 | 57 | 70 | 13 |
| Leaf appearance rate (days per leaf) | 15 | 15 | 0 | 14 | 14 | 0 | 15 | 15 | 0 |
| Average Pasture Cover (kgDM/ha) | 2147 | 2015 | -132 | 2335 | 2037 | -298 | 2063 | 2005 | -58 |
| Pasture Growth Rate (kgDM/ha/day) | 41 | 21 | -20 | 57 | 22 | -35 | 33 | 20 | -14 |
| Post Grazing Biomass (kgDM/ha) | 1516 | 1554 | 38 | | | | | | |
| Nitrogen applied YTD (kgN/ha) | 155 | 155 | 0 | 15 | 0 | -15 | 3 | 0 | -3 |

*Please note all pasture calculations detailed above are based on the current Grazed Milking Area

| MILK PRODUCTION | Last Week | This Week | Variation |
|--------------------------------|-----------|-----------|-----------|
| Average No. cows in milk (vat) | 257 | 240 | -17 |
| Litres per cow | 14.8 | 13.5 | -1.3 |
| % Fat | 4.99 | 5.09 | 0.11 |
| % Protein | 3.74 | 3.93 | 0.19 |
| MS/cow/day | 1.29 | 1.20 | -0.08 |
| MS/ha/day | 2.93 | 2.55 | -0.37 |
| BMCC | 142 | 158 | 16 |
| Average Liveweight (kg) | 545 | 545 | 0 |
| | Budget | To Date | Variation |
| Total Milk Production (kgMS) | 121,873 | 130,252 | 107% |
| MS/ha YTD | 1088 | 1185 | 97 |



| Last 7 days | | | | | |
|----------------|-----------|--------------|--------------|---------------|----------|
| Milkers Diet | kg DM | MJ ME | CP (%) | NDF (%) | \$/cow |
| Pasture Intake | 11.1 | 13.2 | 19.3 | 44.9 | 0.0 |
| Concentrates | 5.0 | 12.0 | 16.0 | 16.5 | 0.0 |
| Silage | 0.9 | 11.0 | 9.5 | 49.0 | 0.0 |
| Grazed forage | 0.0 | 0.0 | 0.0 | 0.0 | 0.0 |
| Other feeds | 0.0 | 0.0 | 0.0 | 0.0 | 0.0 |
| Total | 17 | 216.4 | 17.8 | 36.8 | 0 |
| Target | | 191 | 16-18 | >33 | 0 |



| Analysis | | | |
|--|----|---------------------------|---------|
| Expected growth rate next 7 days (kgDM/ha/day) | 20 | Target Leaf Grazing Stage | 2.5-3.0 |
| Total Demand from Pasture (kgDM/ha/day) | 18 | Predicted APC 7 days time | 2027 |
| APC balance (kgDM/ha/day) | 2 | Predicted APC Change | 12.8 |

Discussion

Lower temperatures and very wet, overcast conditions this week led to much lower than expected growth rates, averaging 21kgDM/ha/day across the platform. This resulted in a drop in average pasture cover to 2015kgDM/ha. With the rain expected to ease this coming week but cool temperatures forecast to continue we expect the pasture growth rates to remain at around 20kgDM/ha/day. We will hold the rotation at around 60 days for the coming week to hold/build cover, increasing silage in the ration to compensate. Per cow MS production dropped to 1.2kgMS/cow/day last week with the poor weather despite the DM allocation being increased by 1kg to 17kgDM/cow/day. We will be reducing the ration to 16kgDM/cow/day this week and will be holding this feeding level until dry-off which is scheduled to start 1st June. We will be pumping out all remaining liquid effluent (weather permitting) over the coming weeks in preparation for winter and stockpiles solids will be applied via a muck spreader to nutrient deficient paddocks. Other work being completed on farm at the moment includes the installation of 4 automatic calf feeders and falling storm damaged/dangerous trees.

11 May 2015

