

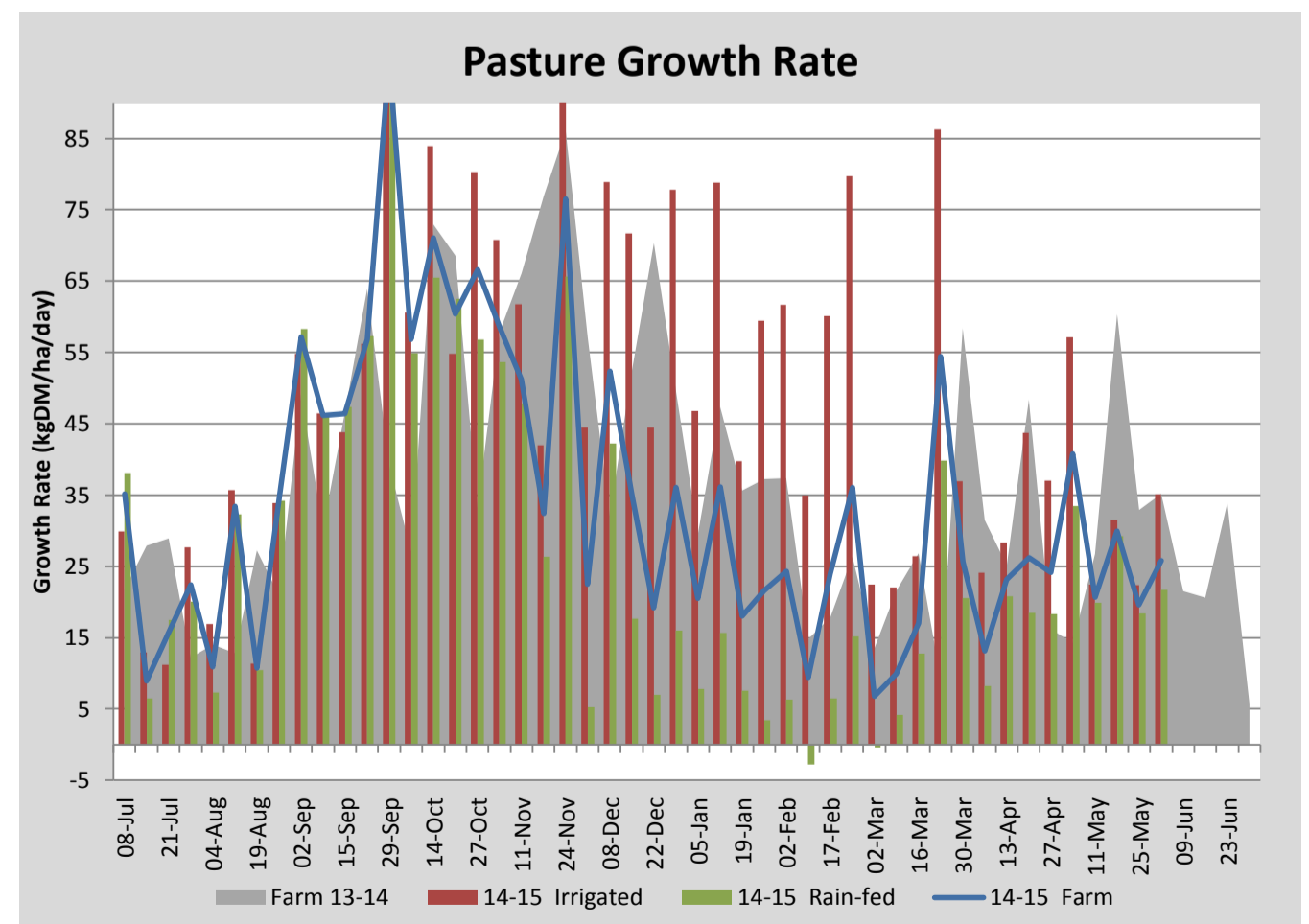
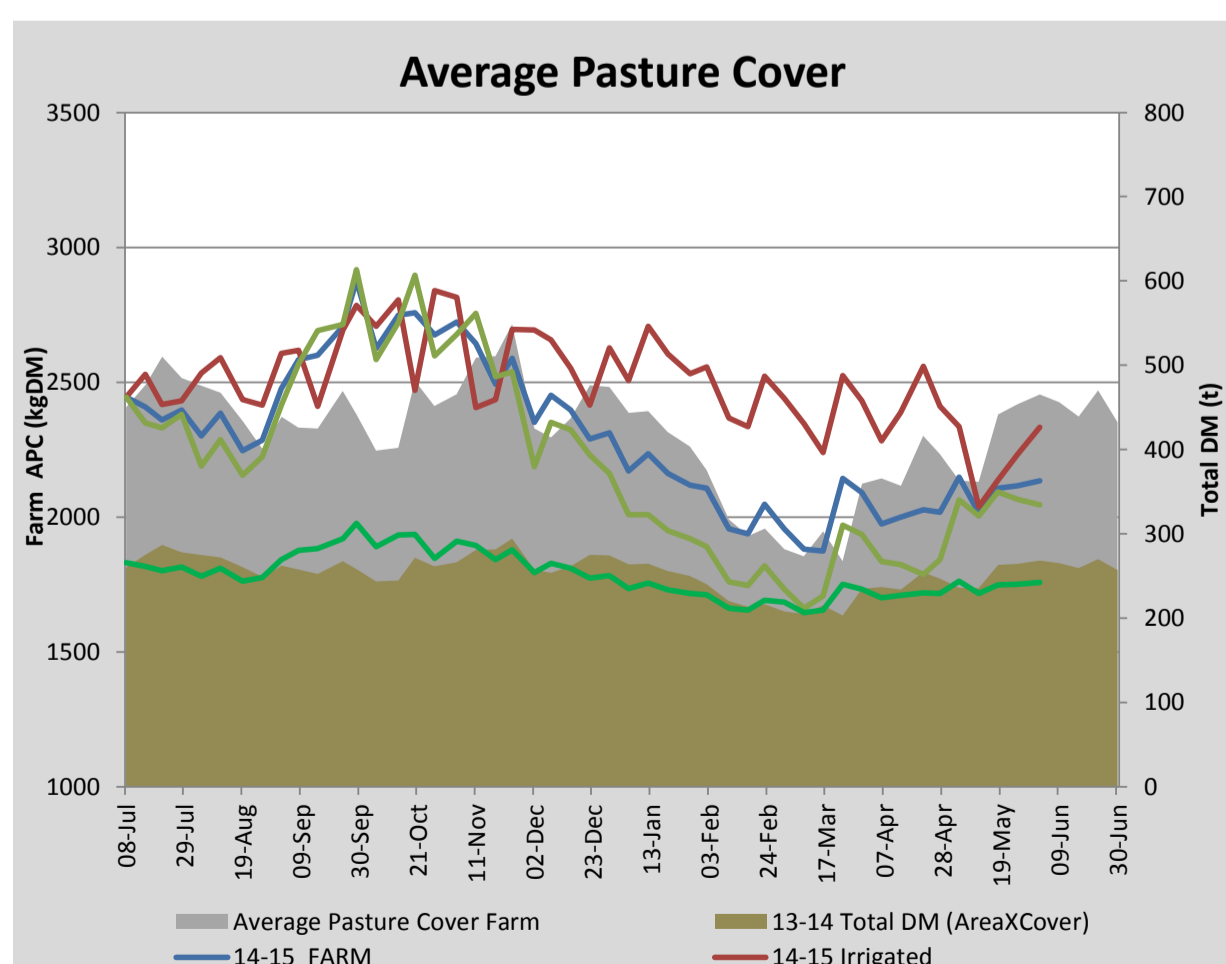
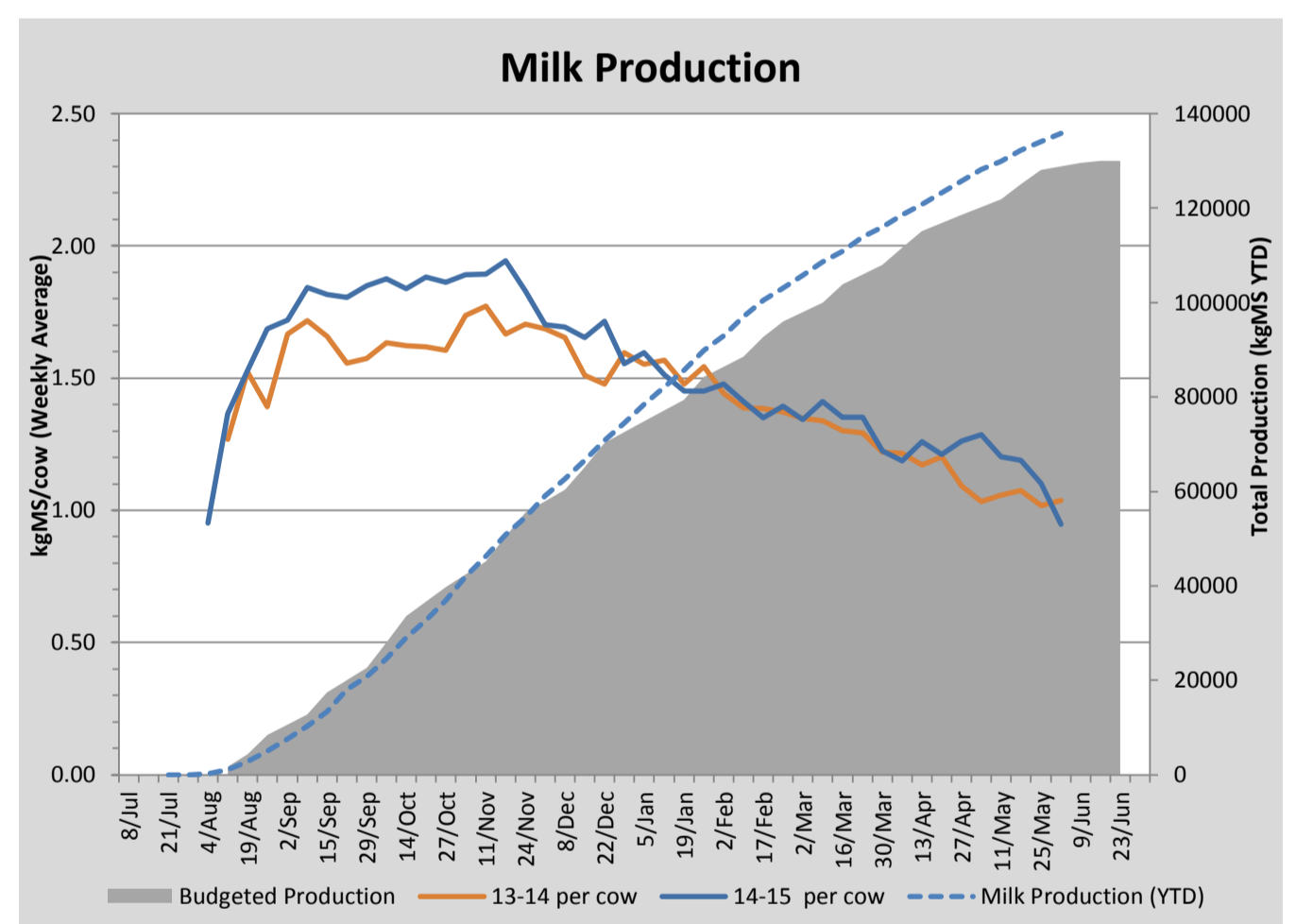
## Key Summary Points

<b>1</b>	Cows were condition scored this week and had an average body condition score of 4.6.
<b>2</b>	37 cows with a condition score below 4.5 will be dried off this week and all remaining cows (condition score 4.5+) will be dried off on the 10th and sent off farm on agistment.
<b>3</b>	Dry cows below CS 4.5 will be transitioned onto kale over the coming weeks.

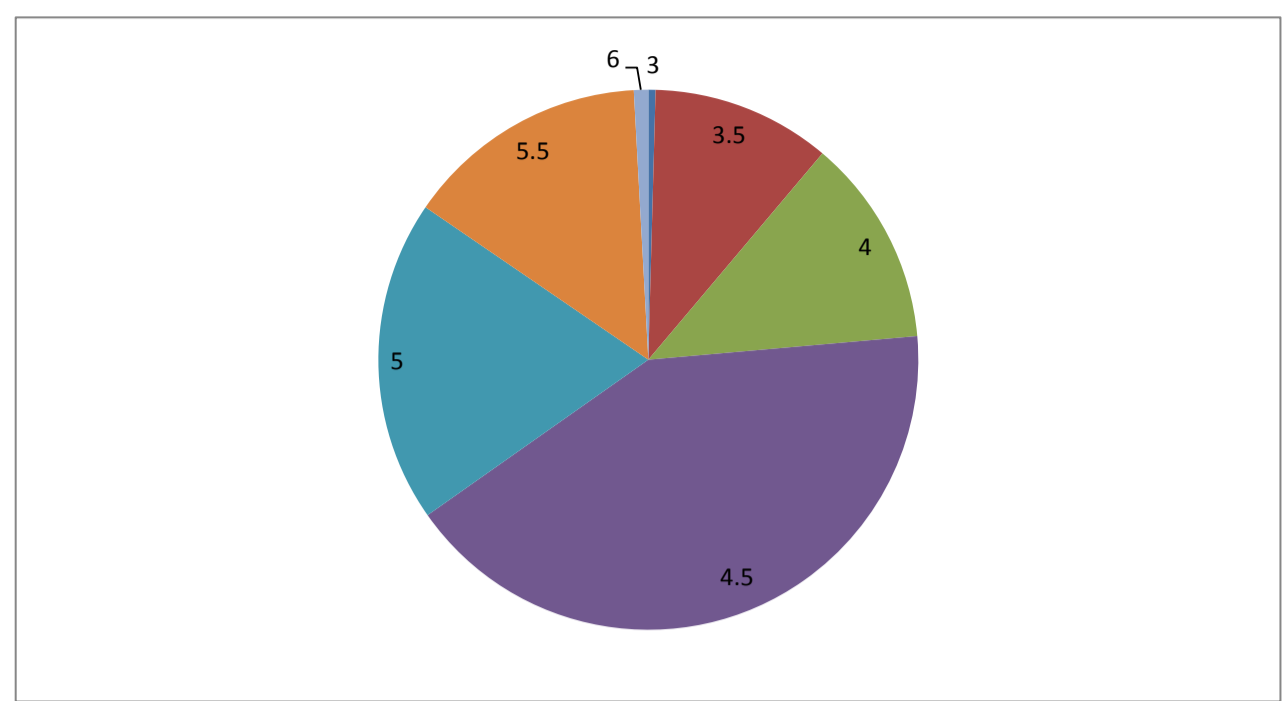
PASTURE INFORMATION	Farm			Irrigated			Rain-fed		
	Last Week	This Week	Variation	Last Week	This Week	Variation	Last Week	This Week	Variation
Grazed milking area (ha)	113.6	113.6	0.0	35.1	35.1	0.0	78.4	78.4	0
Rotation Length (days)	60	57	-3	176	44	-132	46	65	19
Grazing allocation per day (ha)	1.9	2.0	0.1	0.2	0.8	0.6	1.7	1.2	-0.5
Average time since last grazed (days)	60	56	-4	47	41	-6	66	63	-3
Leaf appearance rate (days per leaf)	15	17	3	14	20	6	15	16	1
Average Pasture Cover (kgDM/ha)	2116	2133	17	2232	2333	101	2065	2044	-20
Pasture Growth Rate (kgDM/ha/day)	20	26	6	22	35	13	18	22	3
Post Grazing Biomass (kgDM/ha)	1575	1498	-77						
Nitrogen applied YTD (kgN/ha)	171	171	0	18	0	-18	15	0	-15

\*Please note all pasture calculations detailed above are based on the current Grazed Milking Area

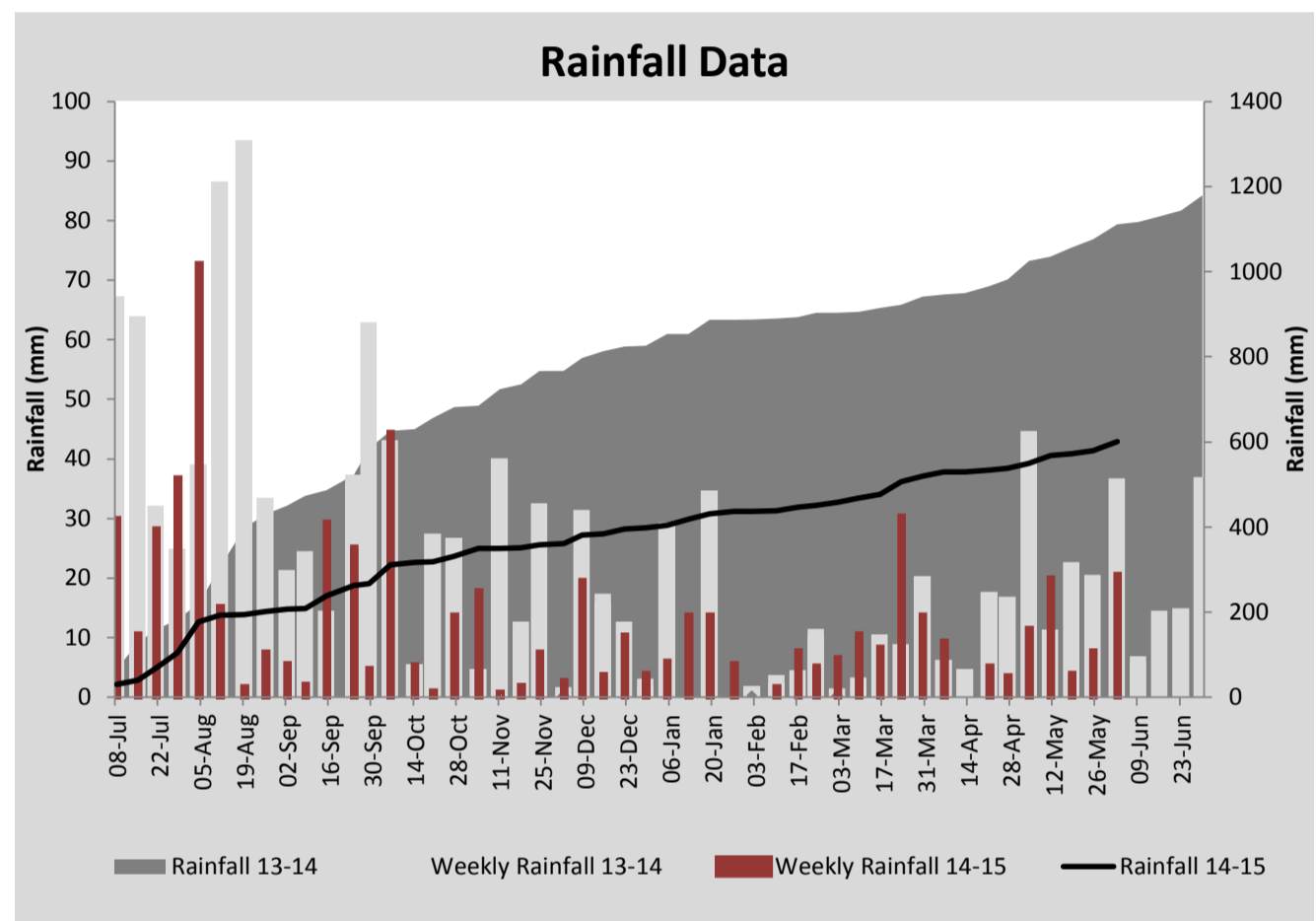
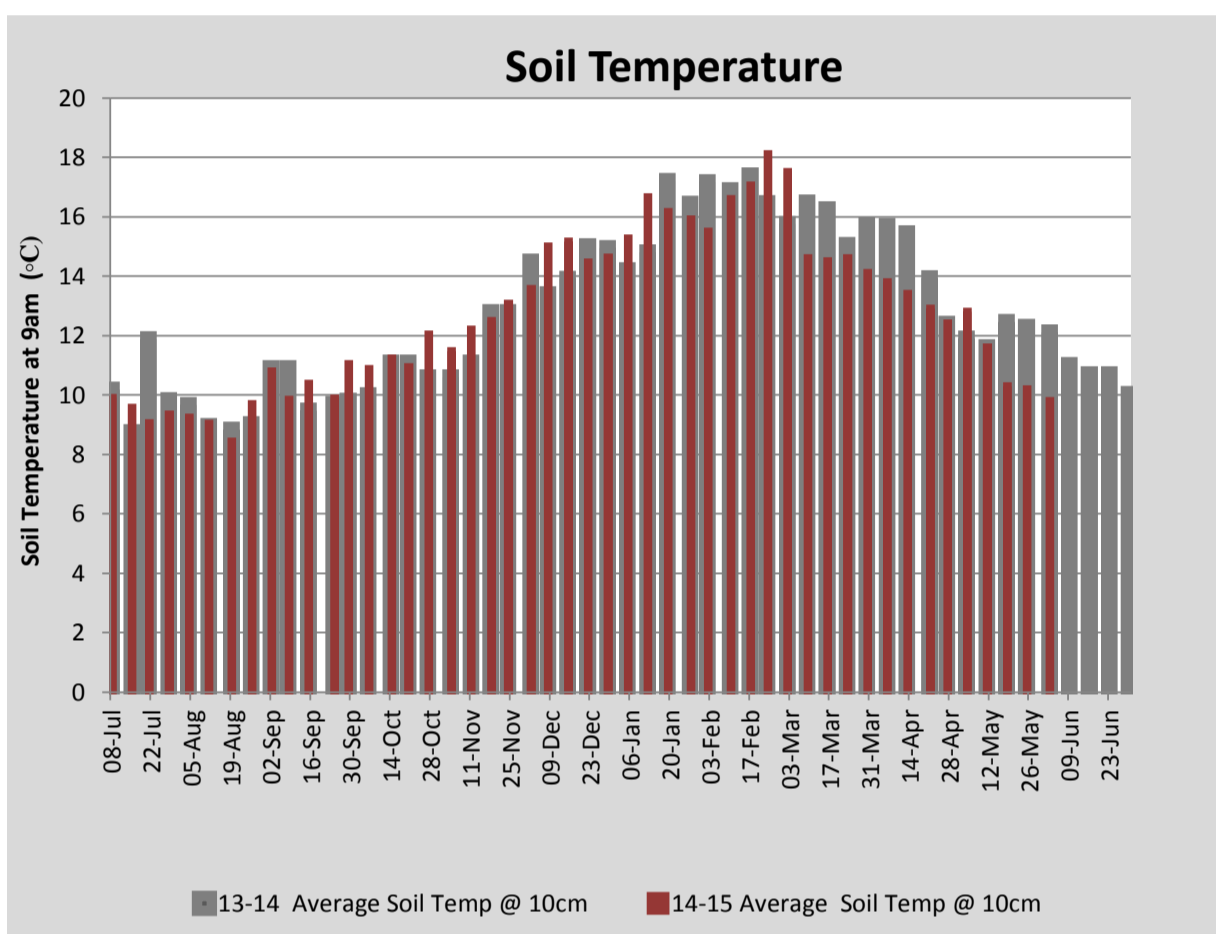
MILK PRODUCTION	Last Week	This Week	Variation
Average No. cows in milk (vat)	239	229	-10
Litres per cow	12.1	10.2	-1.9
% Fat	5.14	5.33	0.19
% Protein	4.01	3.91	-0.10
MS/cow/day	1.10	0.95	-0.15
MS/ha/day	2.33	1.92	-0.41
BMCC	181	217	36
Average Liveweight (kg)	0	0	0
	Budget	To Date	Variation
Total Milk Production (kgMS)	128,818	135,829	105%
MS/ha YTD	1150	1235	84



Last 7 days					
Milkers Diet	kg DM	MJ ME	CP (%)	NDF (%)	\$/cow
Pasture Intake	9.6	13.2	19.3	44.9	0.0
Concentrates	5.0	12.0	16.0	16.5	0.0
Silage	0.0	0.0	0.0	0.0	0.0
Grazed forage	0.0	0.0	0.0	0.0	0.0
Other feeds	1.4	9.0	14.0	58.0	0.0
<b>Total</b>	<b>16</b>	<b>199.3</b>	<b>17.8</b>	<b>37.2</b>	<b>0</b>
<b>Target</b>		<b>191</b>	<b>16-18</b>	<b>&gt;33</b>	<b>0</b>



Body condtion score of in milk cows



Analysis			
Expected growth rate next 7 days (kgDM/ha/day)	18	Target Leaf Grazing Stage	2.5-3.0
Total Demand from Pasture (kgDM/ha/day)	19	Predicted APC 7 days time	2124
APC balance (kgDM/ha/day)	-1	Predicted APC Change	-9.0

## Discussion

Average pasture cover built slightly this week to 2133 kgDM/ha. With cooler conditions forecast for the coming week we expect pasture growth to slow across the platform and average cover to drop. At this stage it looks as though we will be a little behind our target dry off cover of 2200kgDM/ha. All remaining in milk cows were body condition scored this week (Average BCS 4.6) and 37 cows with a body condition score below 4.5 were identified to be dried off. These cows will be transitioned on to kale over the coming weeks. All remaining cows will be dried off on the 10th of June and sent off farm on agistment.

# 2 June 2015

