

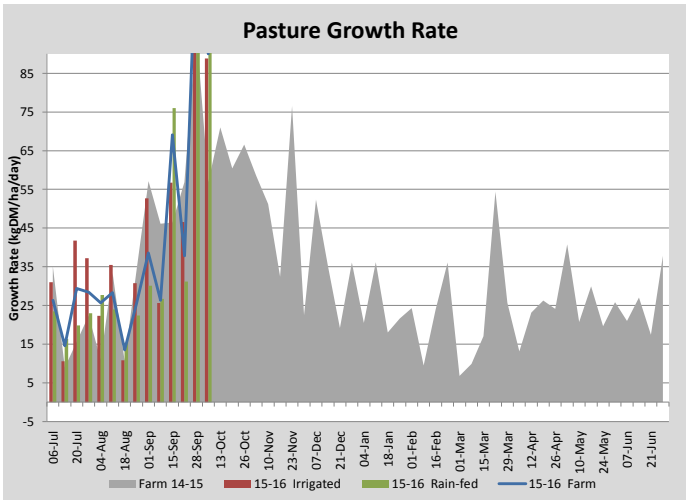
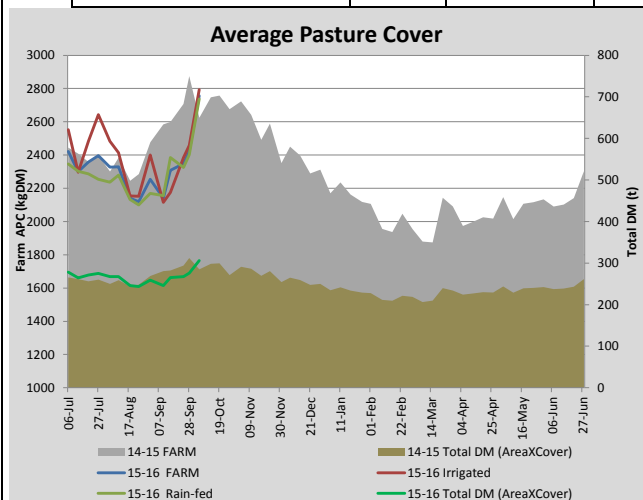
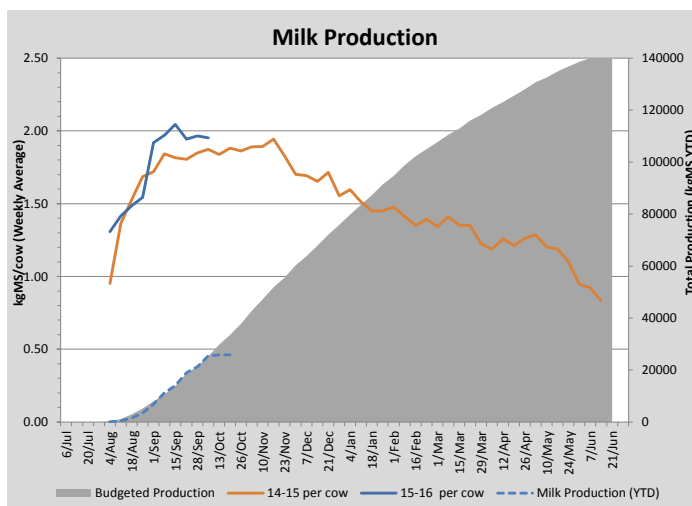
Key Summary Points

- 1** Despite soil moisture levels falling, pasture growth rates have remained high
- 2** 20 ha of silage has been cut on the run-off block and 12 ha will be cut on the milking platform later this week
- 3** Irrigation has started and scheduling will be based on soil moisture sensors

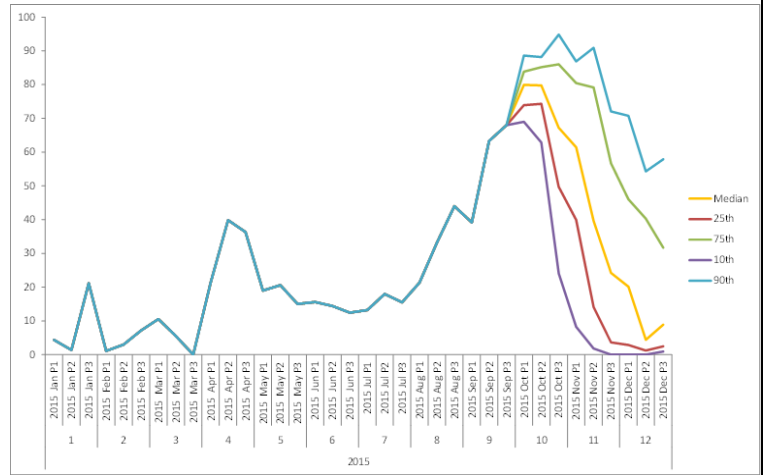
PASTURE INFORMATION	Farm			Irrigated			Rain-fed		
	Last Week	This Week	Variation	Last Week	This Week	Variation	Last Week	This Week	Variation
Grazed milking area (ha)	113.9	110.9	-3.0	42.2	40.1	-2.1	68.7	70.8	2
Rotation Length (days)	37	36	-1	38	36	-2	36	35	-0
Grazing allocation per day (ha)	3.1	3.1	0.0	1.1	1.1	0.0	2.0	2.0	0.0
Average time since last grazed (days)	36	34	-2	36	35	-1	36	33	-3
Leaf appearance rate (days per leaf)	12	11	-1	12	11	-1	12	11	-1
Average Pasture Cover (kgDM/ha)	2423	2757	335	2458	2793	336	2402	2737	335
Pasture Growth Rate (kgDM/ha/day)	120	90	-30	103	89	-14	131	91	-40
Post Grazing Biomass (kgDM/ha)	1720	1680	-40						
Nitrogen applied YTD (kgN/ha)	39	39	0	7	0	-7	16	0	-16

*Please note all pasture calculations detailed above are based on the current Grazed Milking Area

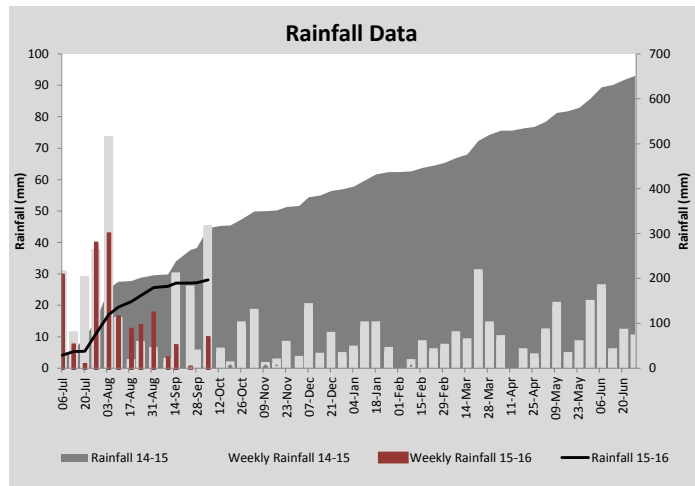
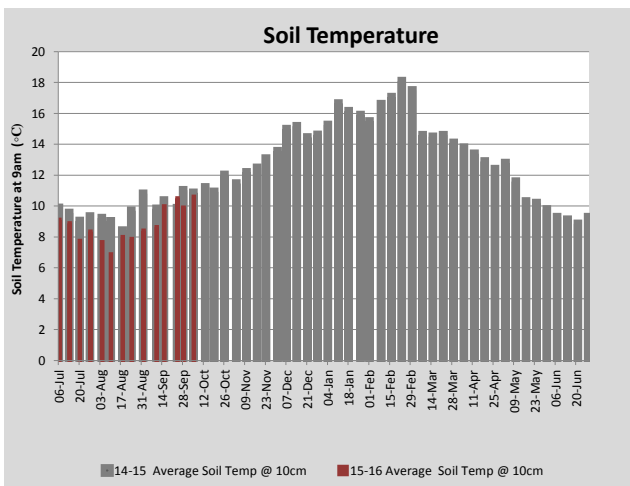
MILK PRODUCTION	Last Week	This Week	Variation
Average No. cows in milk (vat)	335	352	17
Litres per cow	26.7	26.3	-0.4
% Fat	4.12	4.18	0.06
% Protein	3.23	3.25	0.02
MS/cow/day	1.97	1.95	-0.01
MS/ha/day	5.83	6.09	0.26
BMCC	104,714	118,500	13,786
Average Liveweight (kg)	0	0	0
	Budget	To Date	Variation
Total Milk Production (kgMS)	25,225	25,471	101%
MS/ha YTD	221	244	23



Last 7 days					
Milkers Diet	kg DM	MJ ME	CP (%)	NDF (%)	\$/cow
Pasture Intake	15.0	13.3	28.0	41.0	0.0
Concentrates	4.0	12.5	16.0	16.5	0.0
Silage	0.0	0.0	0.0	0.0	0.0
Grazed forage	0.0	0.0	0.0	0.0	0.0
Other feeds	0.0	0.0	0.0	0.0	0.0
Total	19	249.5	25.5	35.8	0
Target		191	16-18	>33	0



Predicted average dryland pasture growth rate for Burnie. The yellow line represents the median (average).



Analysis			
Expected growth rate next 7 days (kgDM/ha/day)	50	Target Leaf Grazing Stage	2.5-3.0
Total Demand from Pasture (kgDM/ha/day)	47	Predicted APC 7 days time	2779
APC balance (kgDM/ha/day)	3	Predicted APC Change	21.2

Discussion

Paddocks identified for renovation (5.9ha) on the milking platform will be sown with brassicas by weeks end. These crops will be irrigated with water from the effluent system. Pasture growth rates have remained high, even though it is apparent the soil is drying. Irrigation has commenced and will follow scheduling based on soil moisture sensor readings until a decent (10-20mm) rainfall event occurs. 14.1 ha's on the milking platform have been shut for silage. An assesment of pasture growth and will be made next week to determine whether all this area will be cut or wether some paddocks need to be returned to the grazing rotation. Mating of heifers will begin early next week using a fixed time insemination program and cow mating will commence on the 20th October.

5 October 2015

