

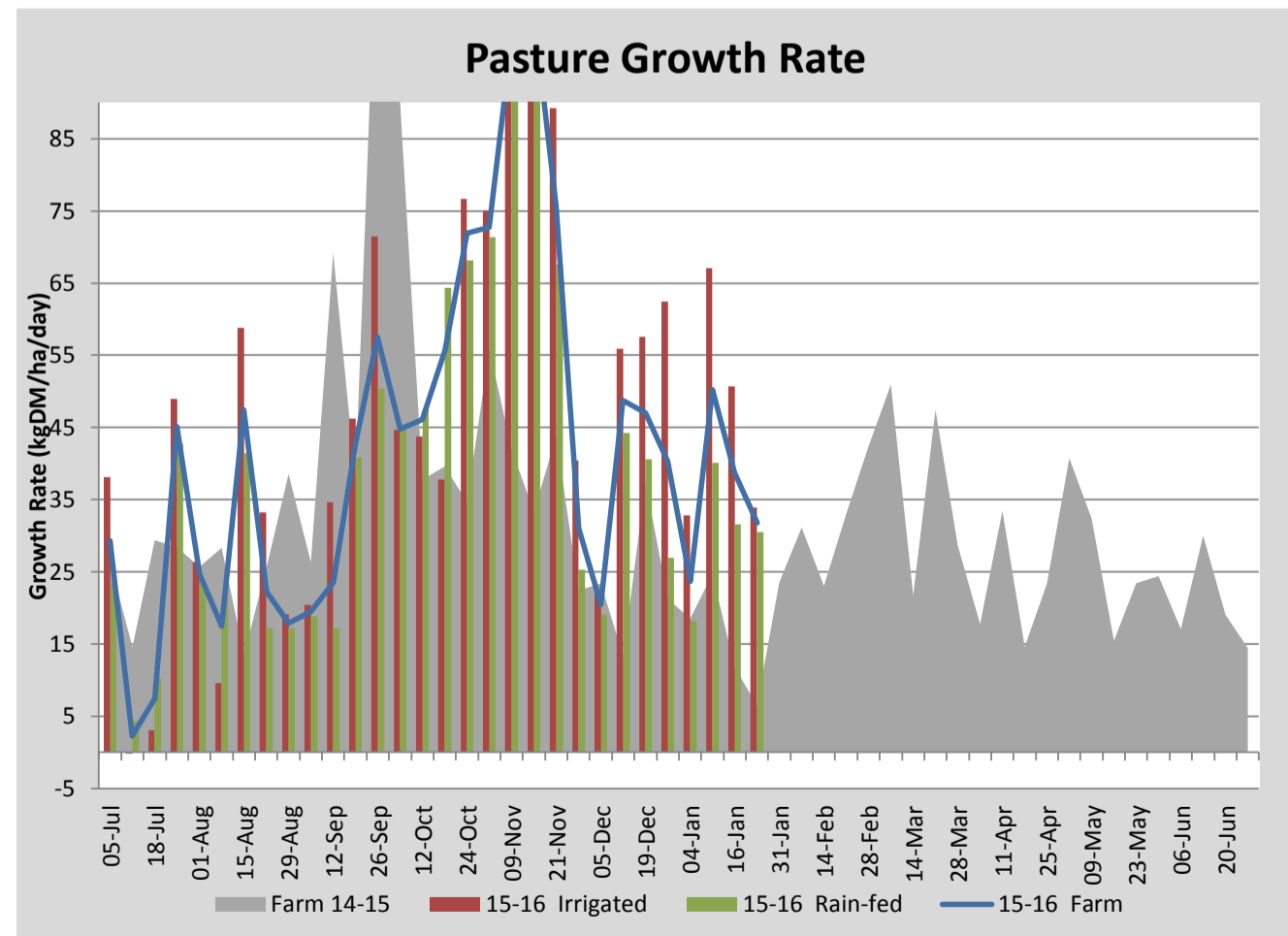
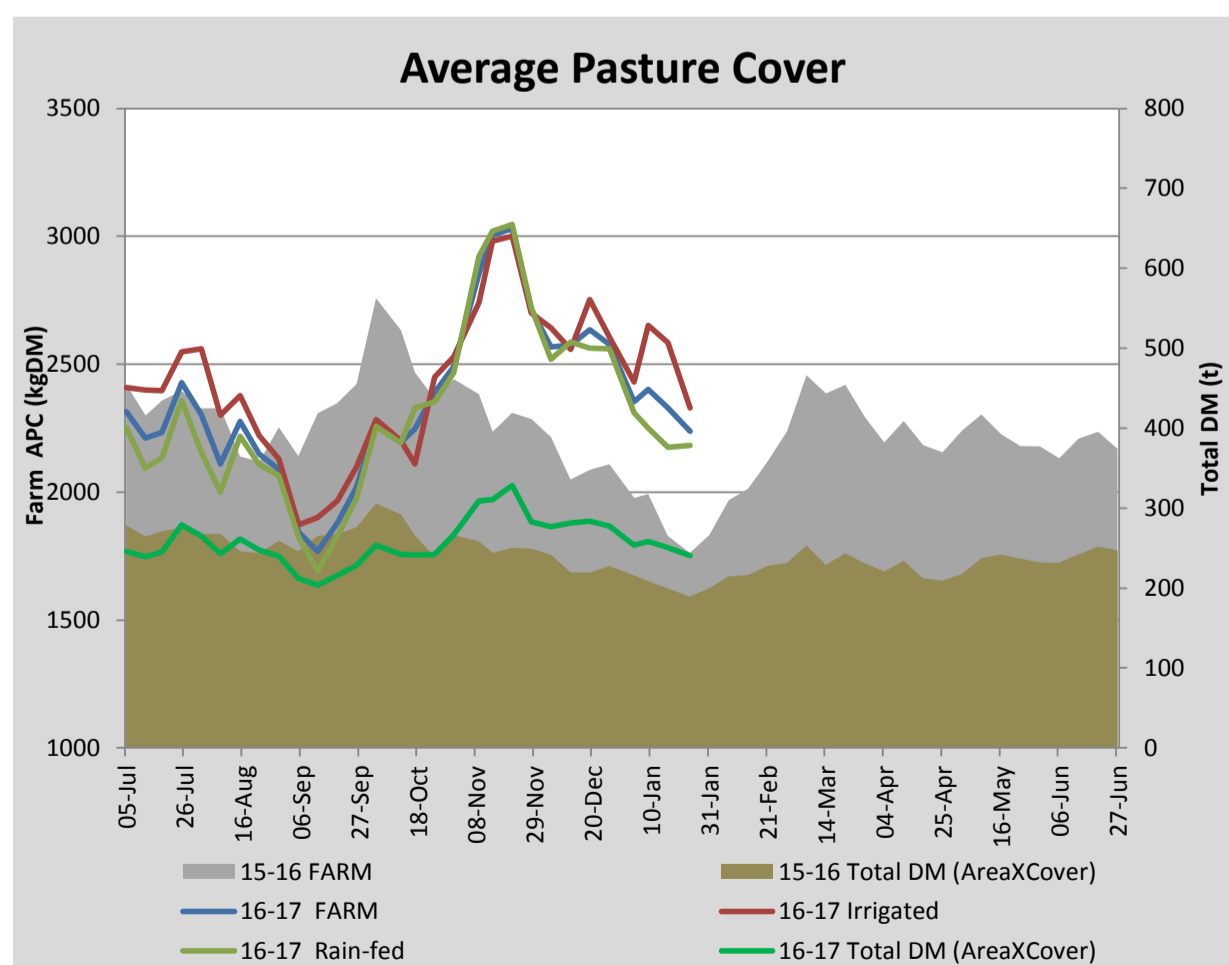
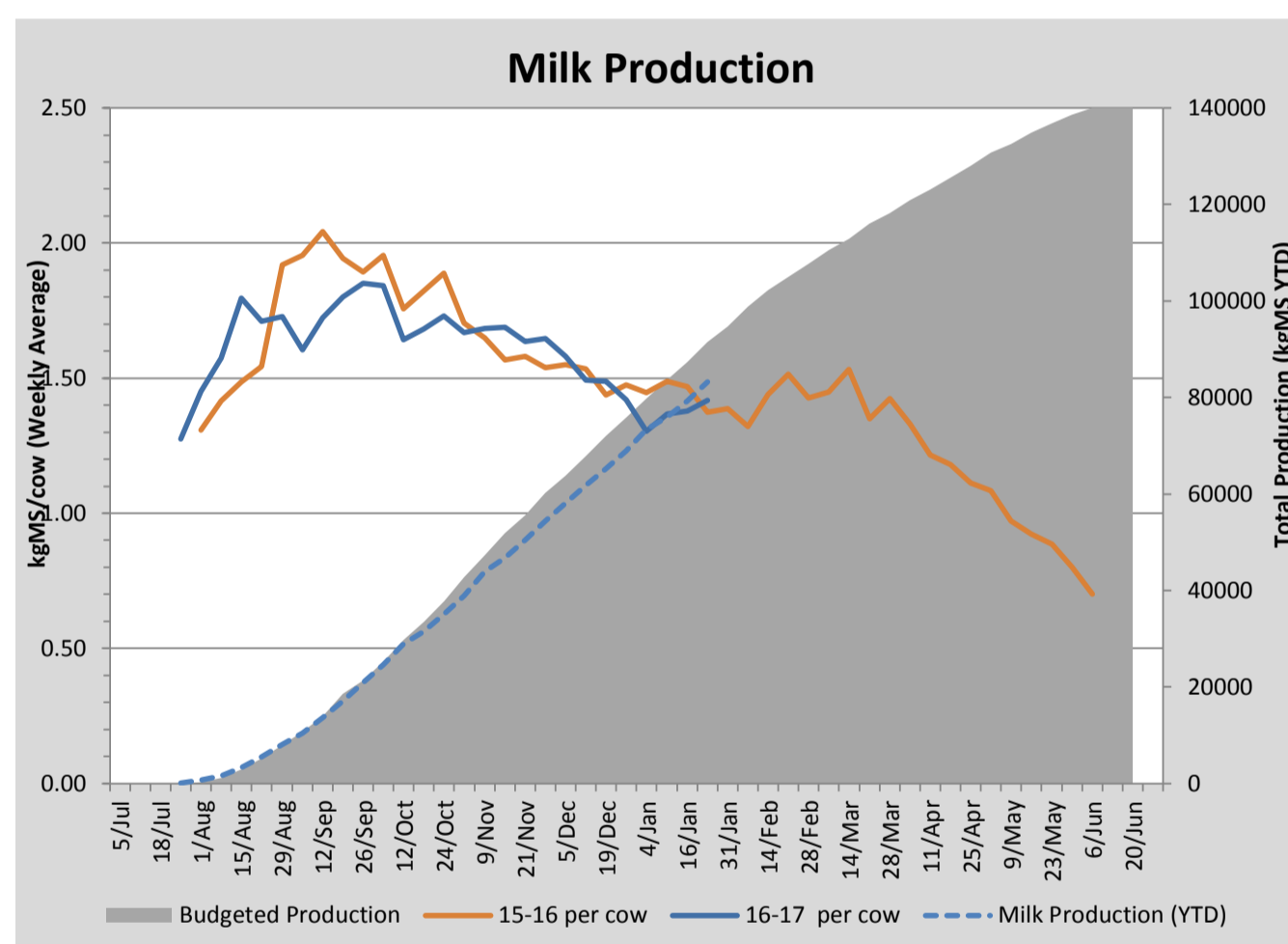
Key Summary Points

- 1 Average pasture cover decreased this week to 2238kgDM/ha this week with overcast and cooler weather depressing growth rates and 3.6 ha being dropped out of rotation for silage.
- 2 Cows started grazing the turnip crop this week, being allocated 2kgDM/cow/day. The crop is yielding approximately 9tDM/ha.
- 3 Focus for the coming week is to build cover on the platform by grazing some of the runoff and to ensure timely irrigation scheduling.

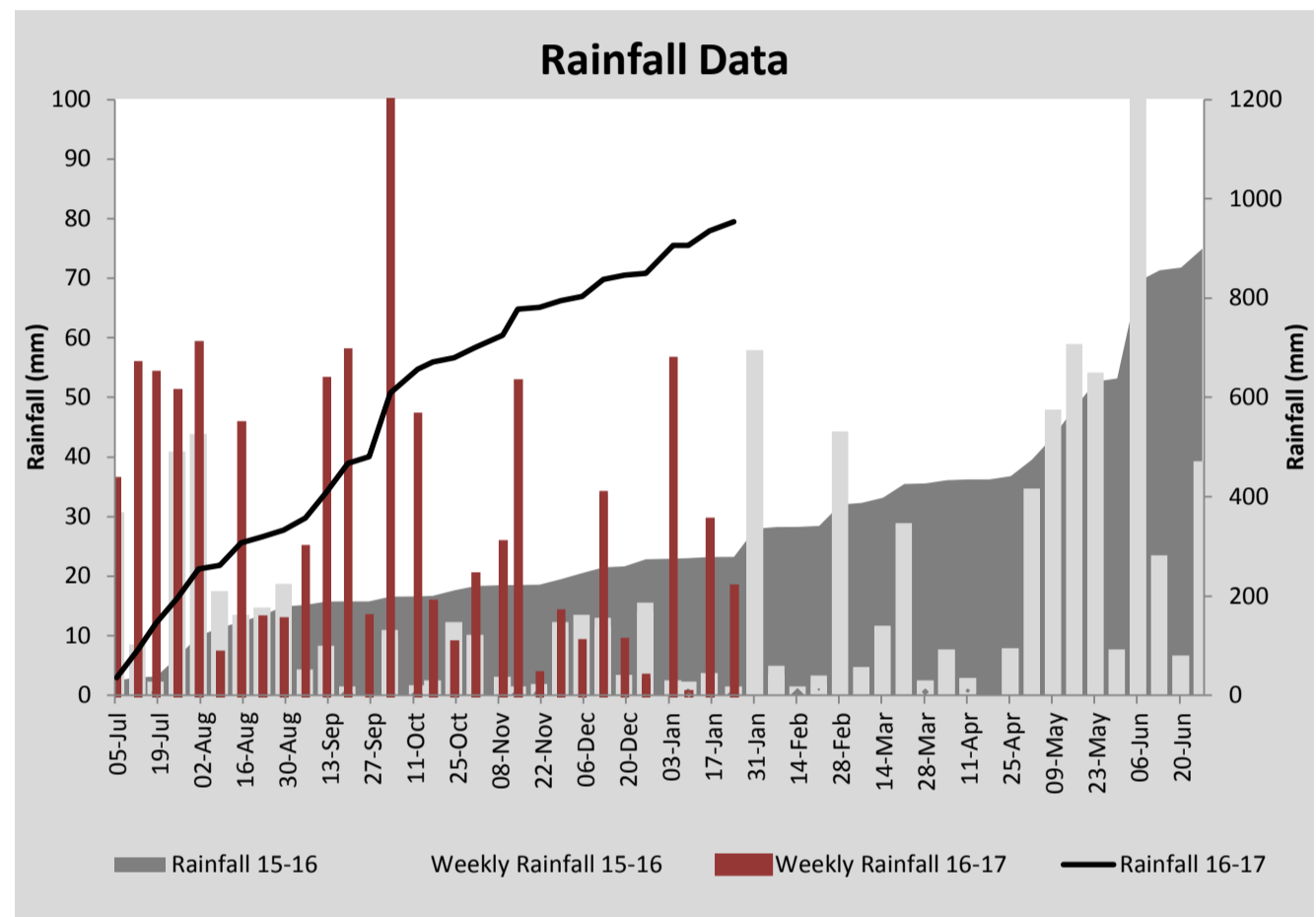
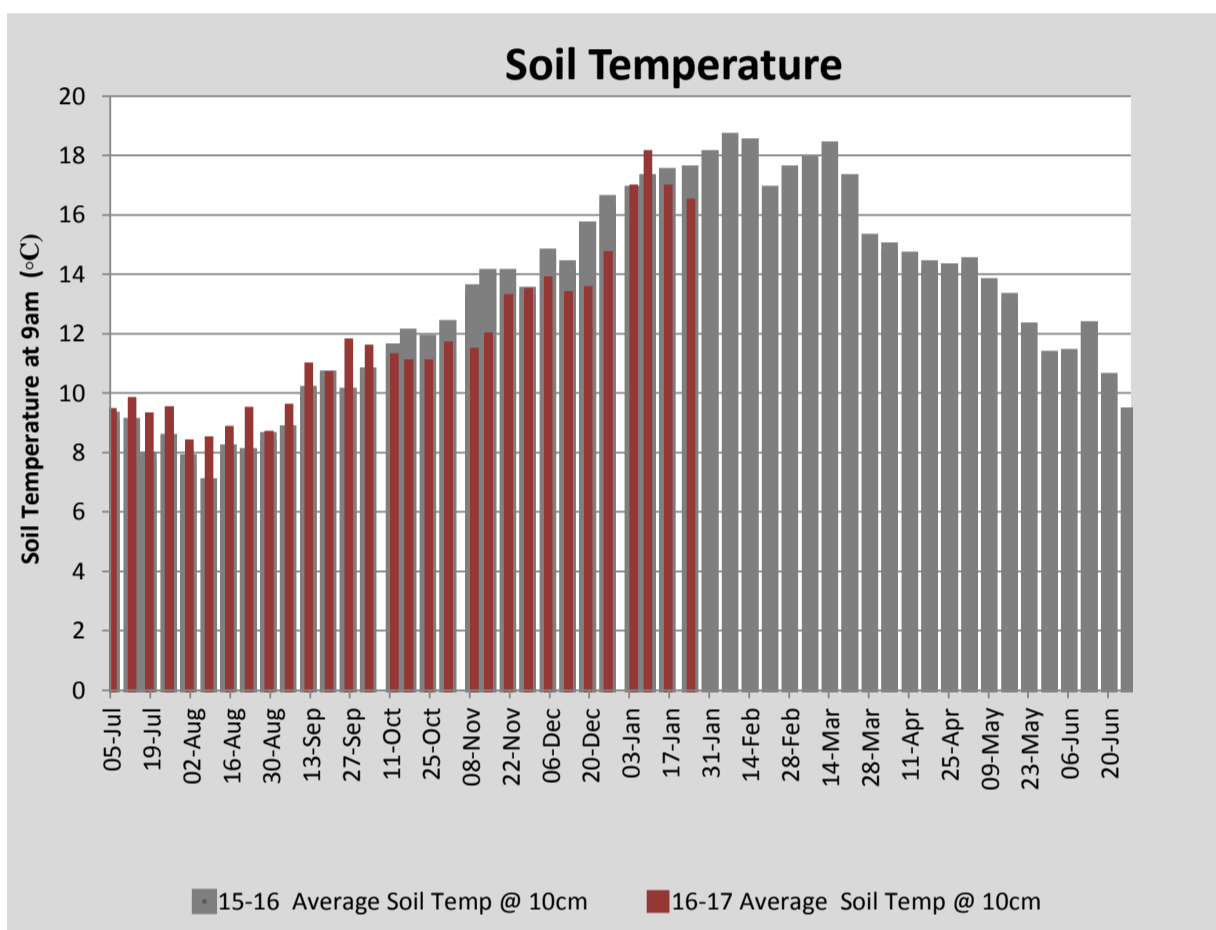
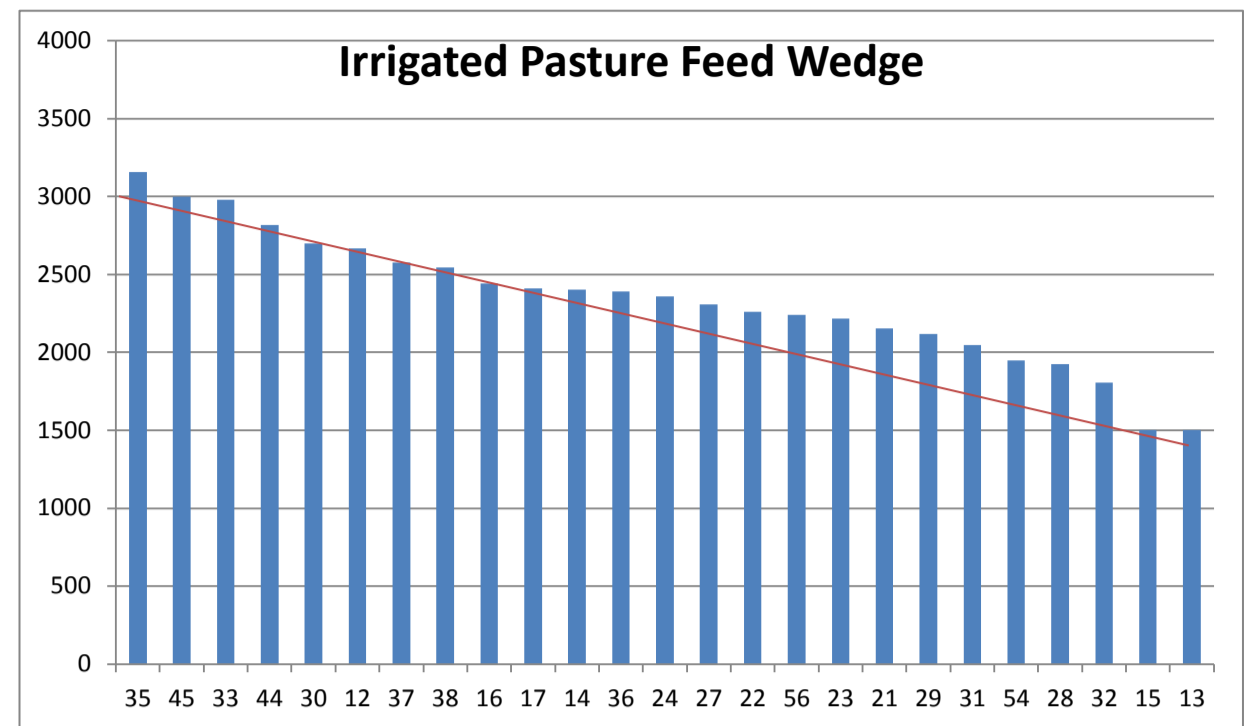
PASTURE INFORMATION	Farm			Irrigated			Rain-fed		
	Last Week	This Week	Variation	Last Week	This Week	Variation	Last Week	This Week	Variation
Grazed milking area (ha)	107.6	107.6	0.0	42.2	40.5	-1.7	65.4	67.1	2
Rotation Length (days)	31	39	8	22	36	14	39	40	1
Grazing allocation per day (ha)	3.5	2.8	-0.7	1.8	1.1	-0.7	1.7	1.7	-0.0
Average time since last grazed (days)	37	31	-7	33	27	-6	40	33	-7
Leaf appearance rate (days per leaf)	10	10	-0	10	9	-1	10	10	0
Average Pasture Cover (kgDM/ha)	2330	2238	-92	2585	2329	-256	2176	2183	7
Pasture Growth Rate (kgDM/ha/day)	39	32	-7	51	34	-17	32	31	-1
Post Grazing Biomass (kgDM/ha)	1707	1500	-207						
Nitrogen applied YTD (kgN/ha)	147	147	0	0	0	0	0	0	0

*Please note all pasture calculations detailed above are based on the current Grazed Milking Area

MILK PRODUCTION	Last Week	This Week	Variation
Average No. cows in milk (vat)	347	349	2
Litres per cow	17.0	17.5	0.5
% Fat	4.68	4.65	-0.03
% Protein	3.43	3.46	0.03
MS/cow/day	1.38	1.42	0.04
MS/ha/day	4.23	4.38	0.15
BMCC	116,000	112,143	-3,857
Average Liveweight (kg)	0	0	0
	Budget	To Date	Variation
Total Milk Production (kgMS)	91,479	83,225	91%
MS/ha YTD	802	792	99%



Last 7 days					
Milkers Diet	kg DM	MJ ME	CP (%)	NDF (%)	\$/cow
Pasture Intake	12.1	0.0	0.0	0.0	0.0
Concentrates	2.5	12.9	15.6	20.3	0.0
Silage	0.4	0.0	0.0	0.0	0.0
Grazed forage	2.0	0.0	0.0	0.0	0.0
Other feeds	0.0	0.0	0.0	0.0	0.0
Total	17				0
Target			16-18	>33	0



Analysis			
Expected growth rate next 7 days (kgDM/ha/day)	36	Target Leaf Grazing Stage	2.5-3.0
Total Demand from Pasture (kgDM/ha/day)	37	Predicted APC 7 days time	2232
APC balance (kgDM/ha/day)	-1	Predicted APC Change	-6.3

Discussion

Average pasture cover decreased this week with overcast, cool conditions depressing growth rates and 3.6ha of the platform being dropped for silage. We decided to drop the two paddocks for silage as we did not think that the cows would be able to eat down into the high covers and the residual would effect quality in subsequent rotations. With a surplus of quality feed available on the run off, we will be grazing some of this area with the milking herd and focus on maintaining quality on irrigated paddocks on the milking platform. With water storages still full, we will look to start irrigating some dryland paddocks on the milking platform with traveling irrigators in the coming weeks, expanding the irrigated area by approximately 7 ha. The planned area to be irrigated was badly pugged during winter and so we will be attempting to level this by direct drilling with ryegrass/clover. Per cow milk solid production has improved this week to 1.42kgMS/cow/day with improved pasture quality and extra energy from the the turnip crop. The focus for the coming week is to ensure timely irrigation scheduling and build cover on the irrigated portion of the milking platform.

24 January 2017

