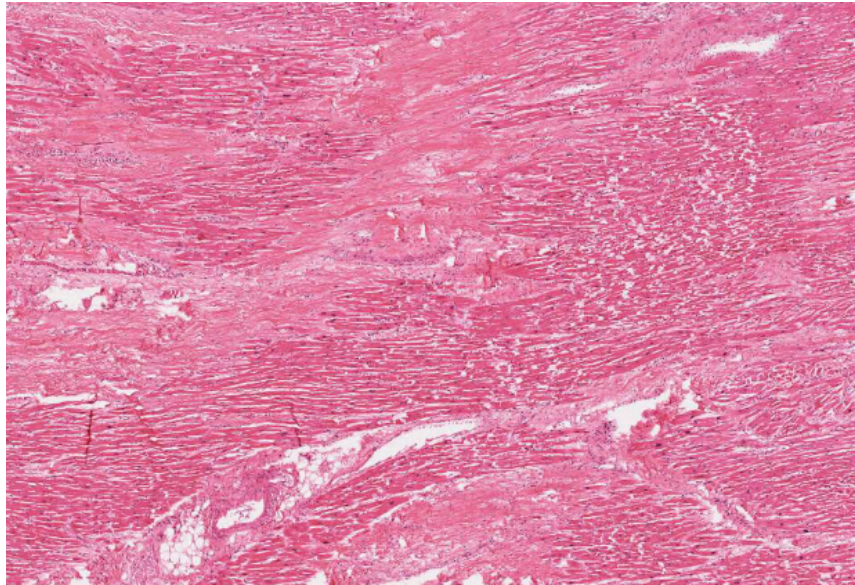


Slide 8



Learning objectives:

- a) **Recognise the morphological features of coagulative necrosis**
- b) **Identify cellular hypertrophy**
- c) **Identify areas of healing with scar formation**

The following characteristics are elements of tissue damage and repair:

1. *Coagulative necrosis* – eosinophilic areas, with little or no nuclear evidence;
2. *Neutrophilic infiltration* – demonstrating acute inflammatory response;
3. *Dense connective tissue* – acellular areas, exemplifying the scar tissue formation;
4. *Organisation* – neo-angiogenesis, oedema, and infiltration by macrophages and lymphocytes;
5. *Hypertrophy* – enlarged cardio-myocytes (square-like appearance).

- *Why is the process named coagulative necrosis? Name the most likely cause.*

- *What type of tissue repair can you identify here?*



Except where otherwise noted, content on this page is licensed under a [Creative Commons Attribution-ShareAlike 4.0 International Licence](https://creativecommons.org/licenses/by-sa/4.0/)

Note: The open version of this document may have been altered from the original. Only pages on this site that display the CC licence and logo are licensed under a Creative Commons licence.

Attribution information

Title:	Inflammation and Healing Worksheet
Source:	http://www.utas.edu.au/health/engage/uni-view-school-of-medicine/resources/courses/medicine/inflammation-and-healing
Author:	Dr Dwight Assenheimer