

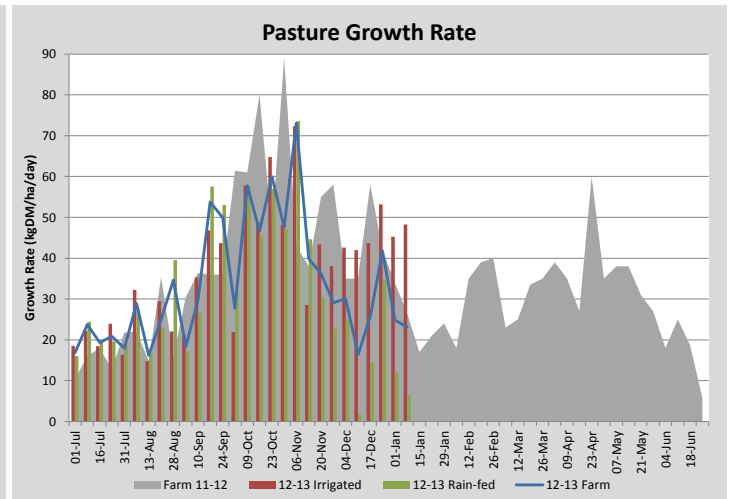
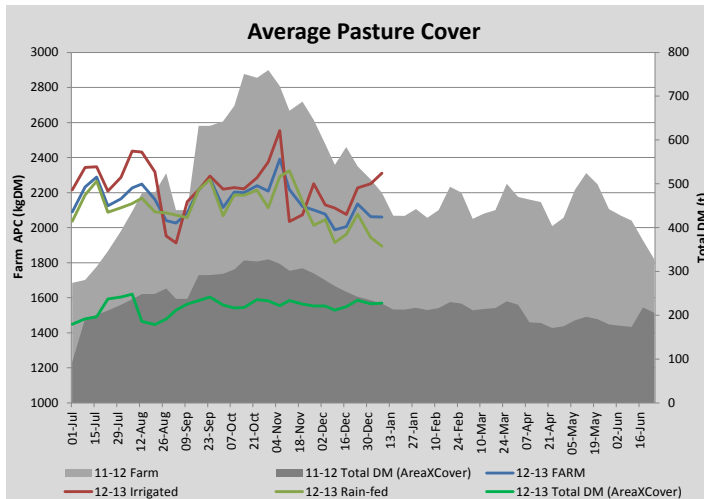
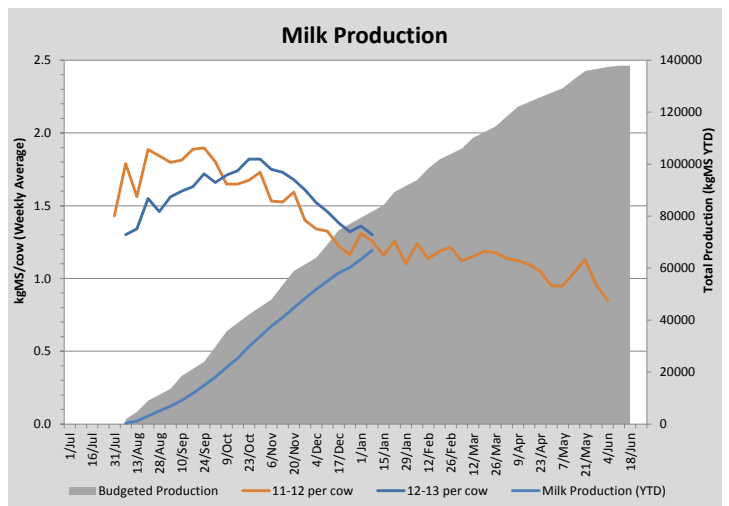
## Key Summary Points

- 1** By building cover on the irrigated part of the farm we have managed to hold average pasture cover despite no growth on the rain-fed portion.
- 2** Cow production has dropped slightly but cows are gaining weight.
- 3** Key focus this week continues to be maintaining soil moisture levels under irrigated pastures to maximise pasture growth.

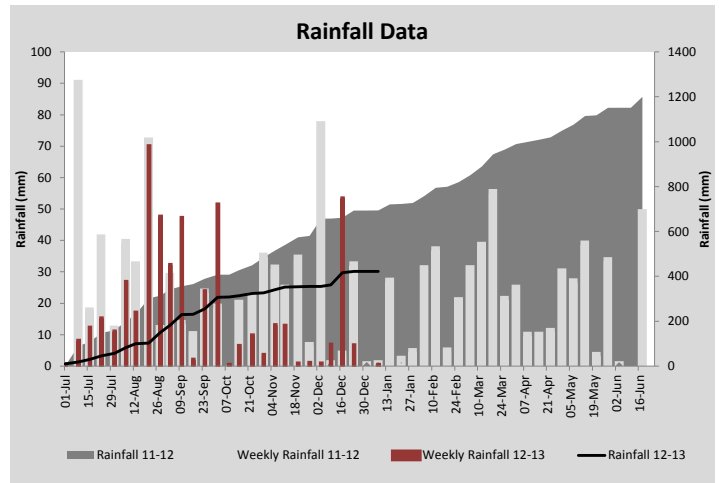
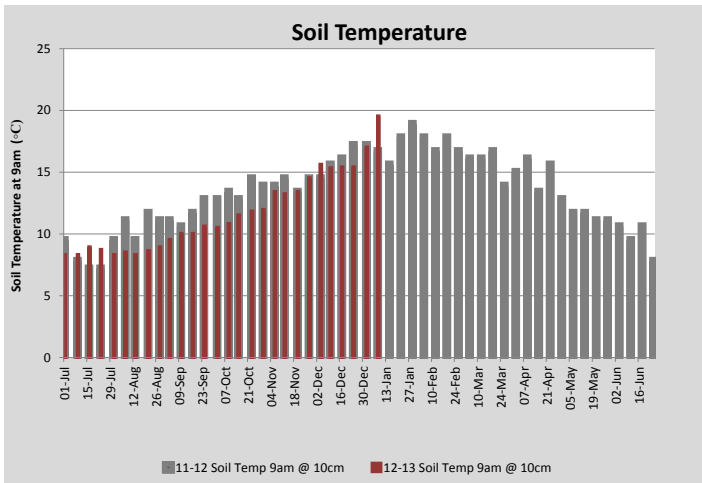
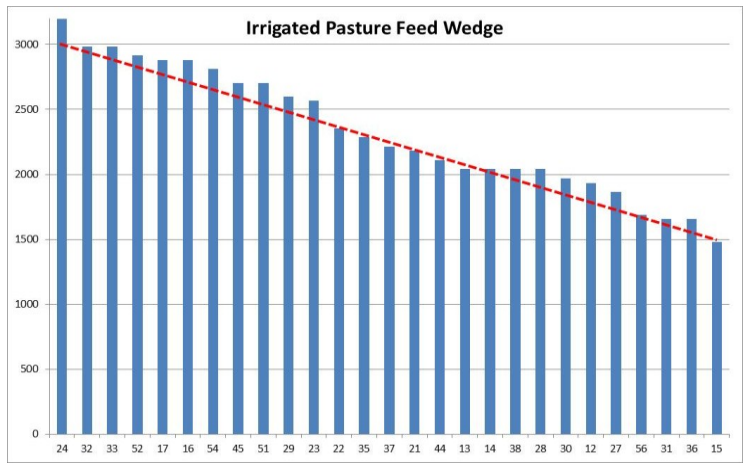
PASTURE INFORMATION	Farm			Irrigated			Rain-fed		
	Last Week	This Week	Variation	Last Week	This Week	Variation	Last Week	This Week	Variation
Grazed milking area (ha)	109.6	110.5	1.0	42.1	44.1	1.91	67.4	66.5	0.95
Rotation Length (days)	39	43		28	29		52	60	
Grazing allocation per day (ha)	2.8	2.6	0.20	1.5	1.5	0.00	1.3	1.1	0.20
Average time since last grazed (days)	44	44	1	27	24	3	54	58	4
Leaf appearance rate (days per leaf)	11	13	2	9	9	0	12	15	3
Average Pasture Cover (kgDM/ha)	2062	2060	-2	2251	2310	59	1944	1894	-50
Pasture Growth Rate (kgDM/ha/day)	25	23	-2	45	48	3	12	6	-6
Post Grazing Biomass (kgDM/ha)	1550	1550	0						
Nitrogen applied YTD (kgN/ha)	169	180	10	0	10	10	0	0	0

\*Please note all pasture calculations detailed above are based on the current Grazed Milking Area

MILK PRODUCTION	Last Week	This Week	Variation
No cows in milk (vat)	315	315	0.00
Litres per cow	19.3	19.0	0.25
% Fat	4.16	4.10	0.06
% Protein	2.93	3.12	0.20
MS/cow/day	1.36	1.30	0.06
MS/ha/day	3.54	3.92	0.39
BMCC	178	177	1.00
Average Liveweight (kg)			
	Budget	To Date	Variation
Total Milk Production (kgMS)	81809	66848.00	82%
MS/ha YTD	730	597	-134



Last 7 days					
Milkers Diet	kg DM	ME	CP	NDF	\$/cow
Pasture Intake	9.5	10.5	0.0	0.0	0.0
Concentrates	4.5	11.0	0.0	0.0	0.0
Silage	4.0	10.0	0.0	0.0	0.0
Grazed forage	0.0	0.0	0.0	0.0	0.0
Other feeds	0.0	0.0	0.0	0.0	0.0
<b>Total</b>	<b>18</b>	<b>189.3</b>	<b>0</b>	<b>0</b>	<b>0</b>
<b>Target</b>	<b>18</b>		<b>0</b>	<b>0</b>	<b>0</b>



Analysis			
Expected growth rate next 7 days (kgDM/ha/day)	25	Target Leaf Grazing Stage	3.0
Total Demand from Pasture (kgDM/ha/day)	24	Predicted APC 7 days time	2065
APC balance (kgDM/ha/day)	1	Predicted APC Change	5.4

## Discussion

Average pasture covers have stayed steady the last 7 days despite no growth on the rain-fed portion of the farm. By keeping the irrigated rotation length close to 30 days we have built cover on this section of the farm. We will keep this rotation constant for the next 7 days (rain-fed at 60 days) and keep silage intake at 4kg/cow/day. Cow production has dropped slightly following some extreme temperature conditions this week. Cows are currently gaining weight at 11.5kg/cow/week on average and average herd weight is 513kg/cow. Cows will be pregnancy tested on the 19th of this month to determine AI in calf rates. We will be sowing 8-12ha of kale as a winter crop on the run-off platform which will be sown between the 20-30th of this month to be ready for grazing in June. We will continue to monitor the herd for any low producing cows who are not profitable under the current supplement levels and dry them off as required.

# 8 January 2013

