

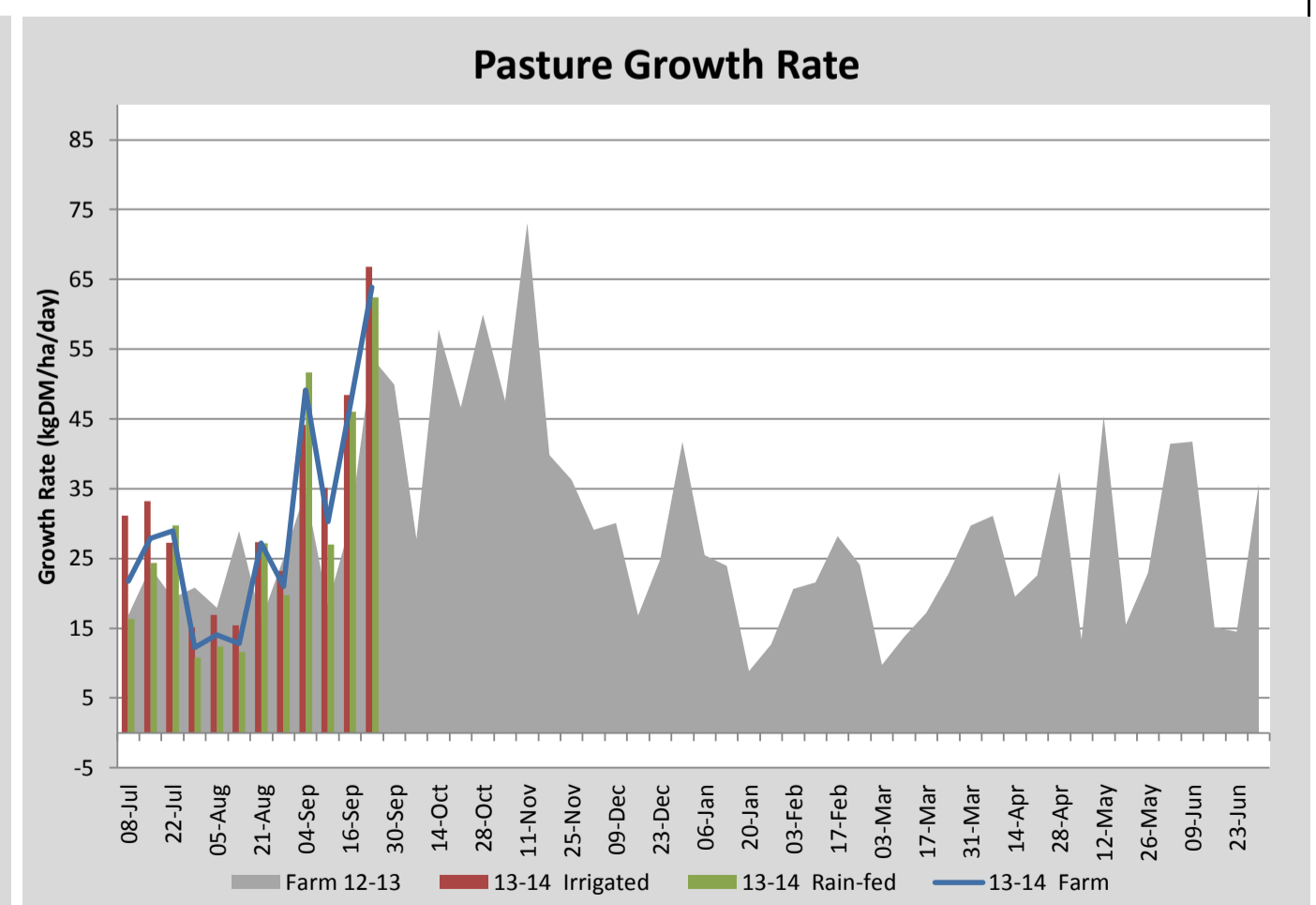
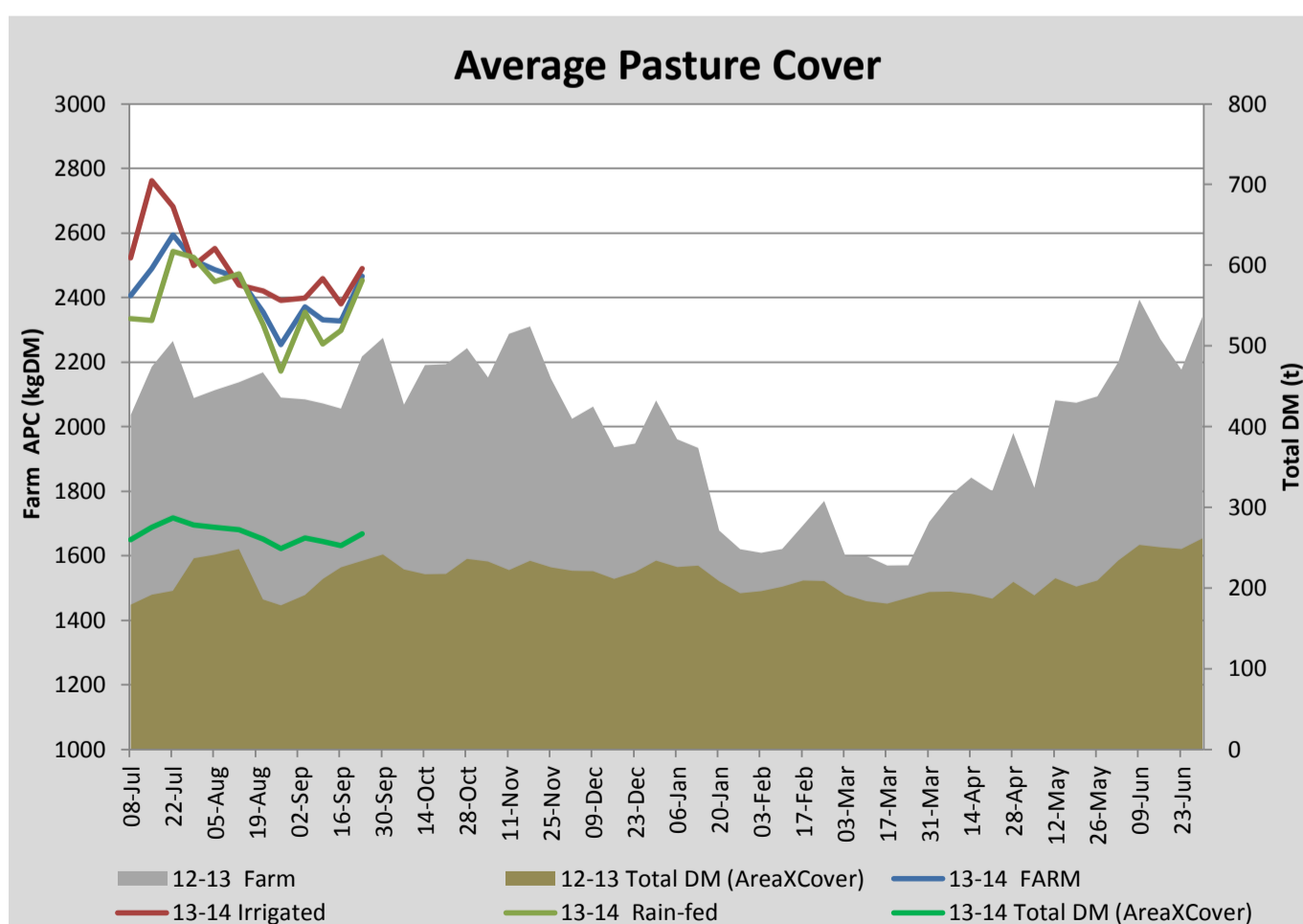
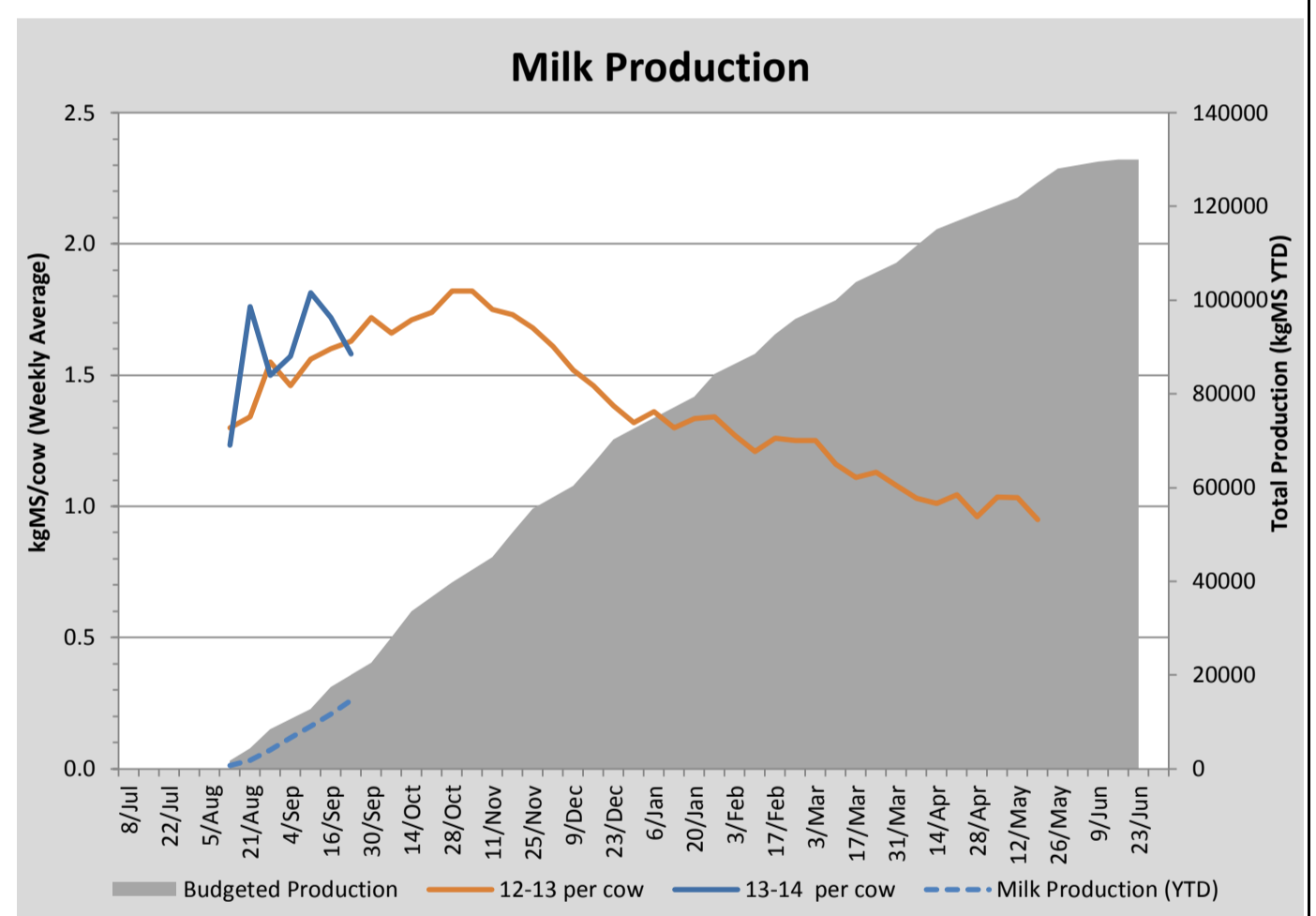
## Key Summary Points

- 1** Average pasture cover has increased to 2467kgDM/ha
- 2** Focus for the coming week is to clean up residual cover from the MMFF grazing study to maintain quality in these paddocks and drop paddocks outside the trial for silage if required. Target is to graze ryegrass at 3 leaf stage or 2900kgDM/ha (which ever comes first).
- 3** Milksolid production per cow dropped this week to 1.58kgMS/cow/day, with total production on par with this time last year.

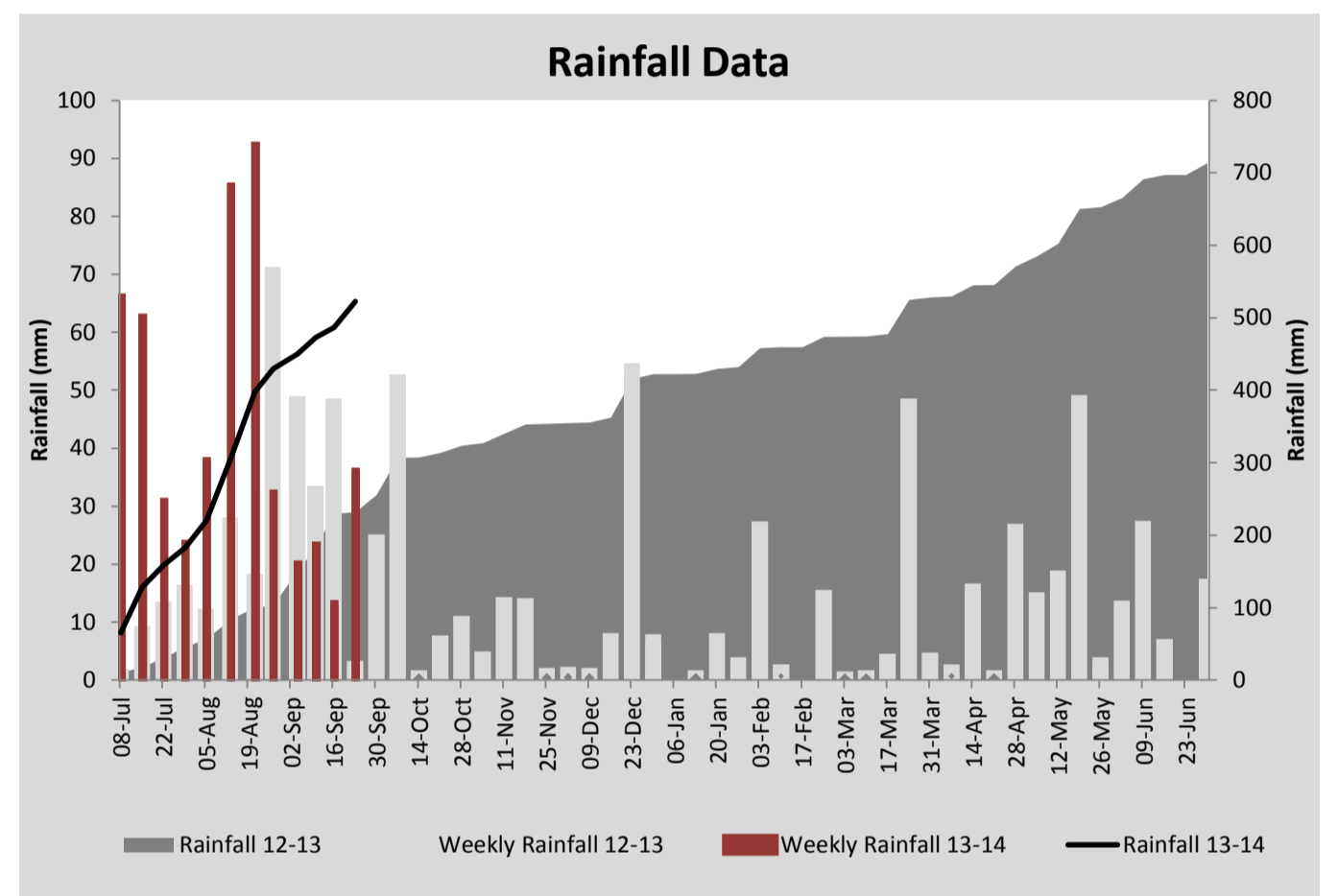
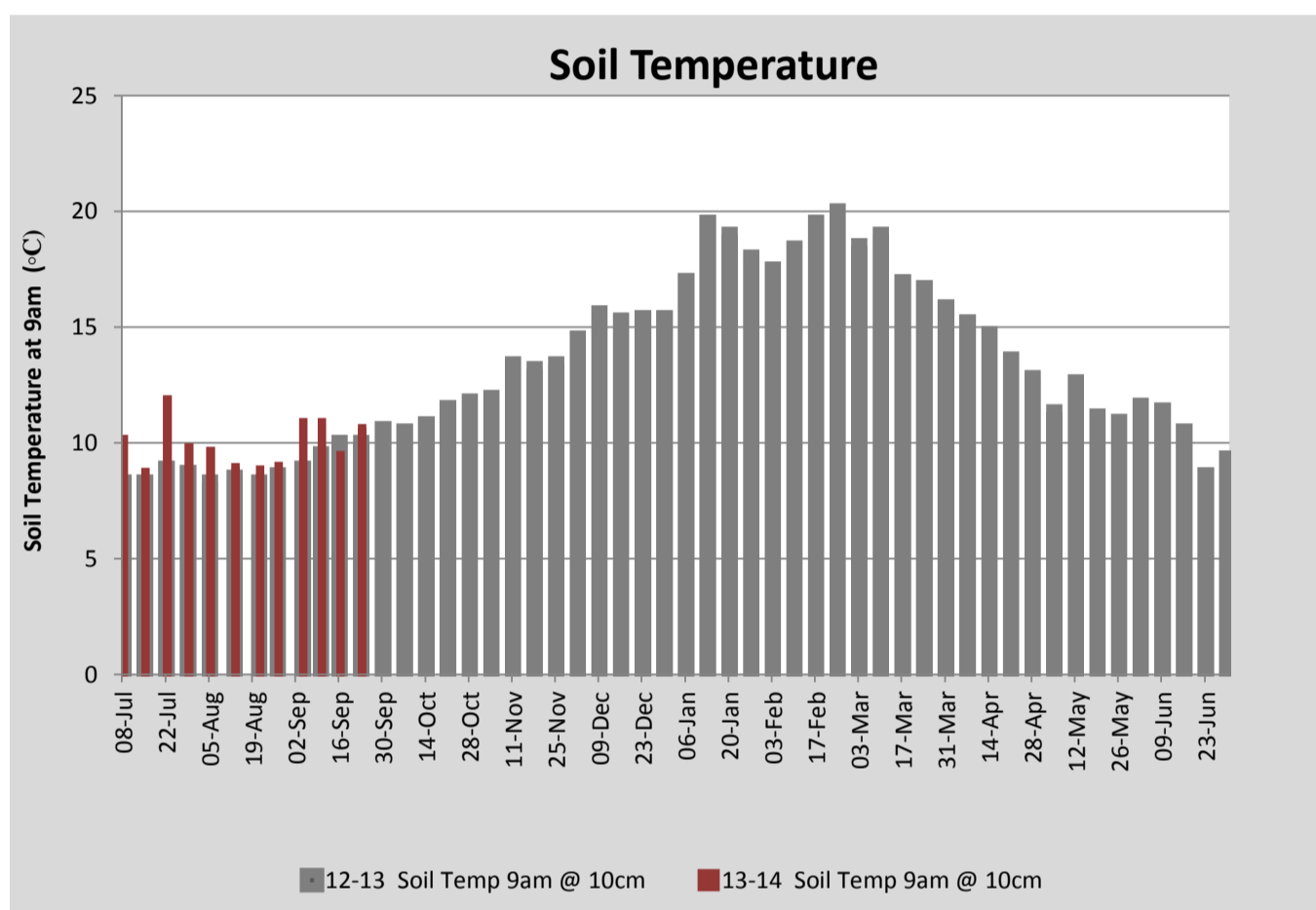
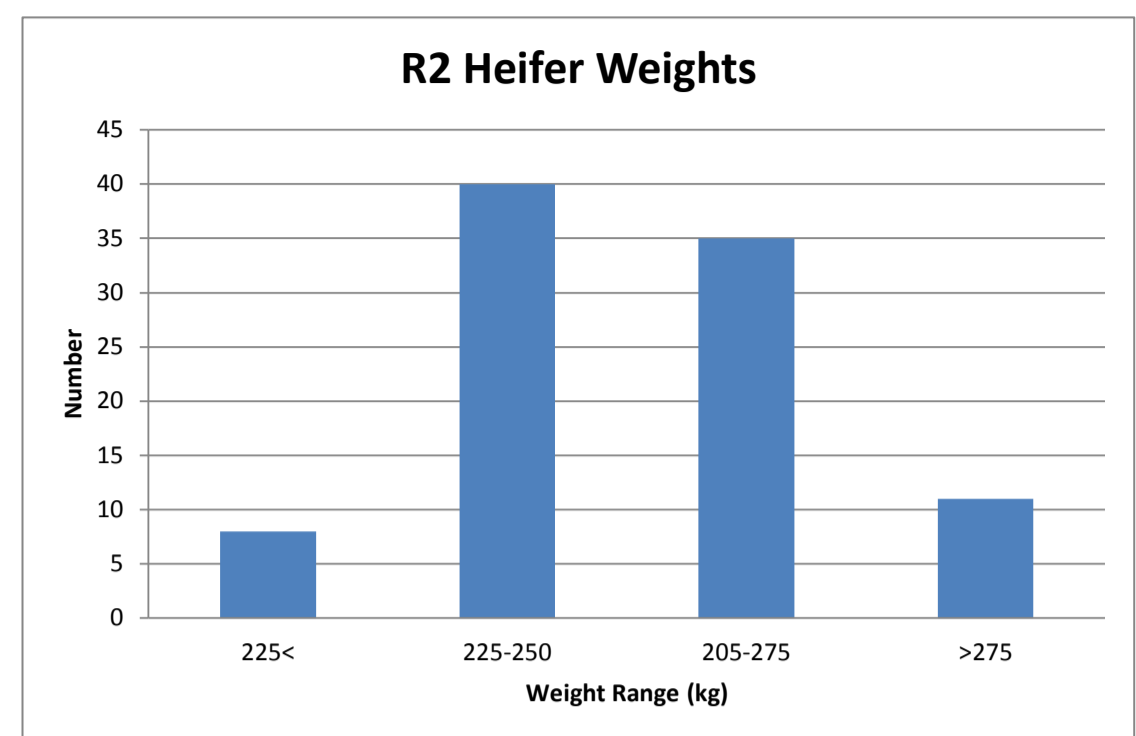
PASTURE INFORMATION	Farm			Irrigated			Rain-fed		
	Last Week	This Week	Variation	Last Week	This Week	Variation	Last Week	This Week	Variation
Grazed milking area (ha)	108.4	108.4	0.0	38.9	38.9	0.00	69.5	69.5	0.00
Rotation Length (days)	48	36	-12	54	43	-11	45	34	-12
Grazing allocation per day (ha)	2.3	3.0	0.72	0.7	0.9	0.18	1.5	2.1	0.54
Average time since last grazed (days)	70	56	-14	81	45	-36	64	62	-2
Leaf appearance rate (days per leaf)	15	15	0	15	15	0	15	15	0
Average Pasture Cover (kgDM/ha)	2328	2467	139	2381	2490	109	2298	2454	156
Pasture Growth Rate (kgDM/ha/day)	47	64	17	48	67	18	46	62	16
Post Grazing Biomass (kgDM/ha)	1510	1630	120						
Nitrogen applied YTD (kgN/ha)	7	7	0	7	0	-7	7	0	-7

\*Please note all pasture calculations detailed above are based on the current Grazed Milking Area

MILK PRODUCTION	Last Week	This Week	Variation
Average No cows in milk (vat)	248	267	19.00
Litres per cow	23.9	22.2	1.66
% Fat	4.20	4.20	0.00
% Protein	2.99	2.91	0.08
MS/cow/day	1.72	1.58	0.14
MS/ha/day	3.77	3.73	0.04
BMCC	134	161	27.00
Average Liveweight (kg)			
	Budget	To Date	Variation
Total Milk Production (kgMS)	20018	14646	73%
MS/ha YTD	179	133	-46



Last 7 days					
Milkers Diet	kg DM	ME	CP	NDF	\$/cow
Pasture Intake	13.0	11.5	0%	0%	0.0
Concentrates	3.5	12.0	0.0	0.0	0.0
Silage	0.0	0.0	0.0	0.0	0.0
Grazed forage	0.0	0.0	0.0	0.0	0.0
Other feeds	0.0	0.0	0.0	0.0	0.0
<b>Total</b>	<b>16.5</b>	<b>191.5</b>	<b>0</b>	<b>0</b>	<b>0</b>
<b>Target</b>	<b>16.5</b>		<b>0</b>	<b>0</b>	<b>0</b>



Analysis			
Expected growth rate next 7 days (kgDM/ha/day)	45	Target Leaf Grazing Stage	2.0
Total Demand from Pasture (kgDM/ha/day)	47	Predicted APC 7 days time	2454
APC balance (kgDM/ha/day)	-2	Predicted APC Change	-12.6

## Discussion

Average pasture cover has increased this week to 2467kgDM/ha aided by an average growth rate of 64kgDM/ha/day. Average residuals this week were 1600kgDM/ha, with an average area allocation of 3ha/day (36 day rotation). More Milk From Forages (MMFF) trial paddocks will become available for grazing with the main herd in the coming week which should see a surplus develop on the remainder of the milking platform. Per cow milk solid production dropped this week by .14kg/head/day to 1.58kgMS/head/day. This drop in production occurred over a 3 day period and was most likely due to a spike in the number of cows with mastitis coinciding with slight pasture under allocation. R2 heifers were weighed and drenched this week. The average weight is 252kg, which is behind the target weight of 280kg. Mating is scheduled to start 21st October with synchronisation programs to be used on both the heifers and main herd.

# 23 September 2013

