

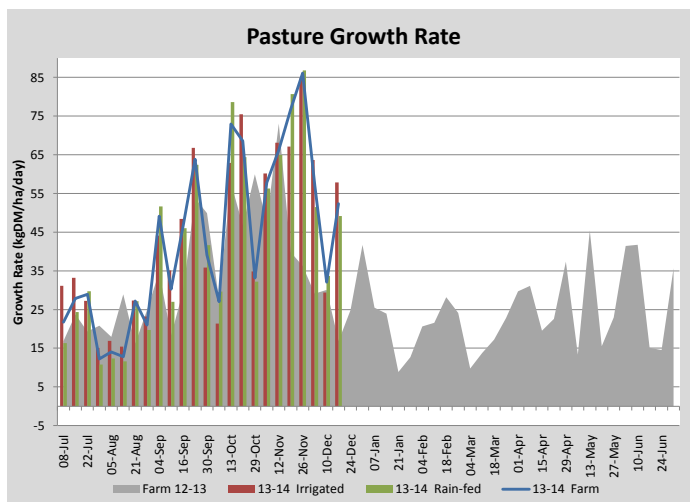
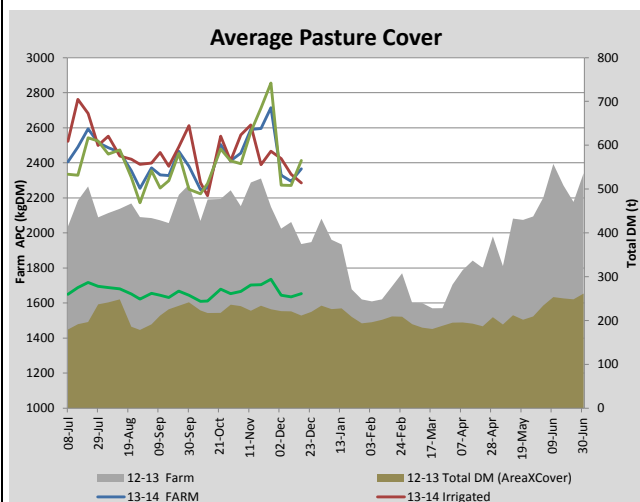
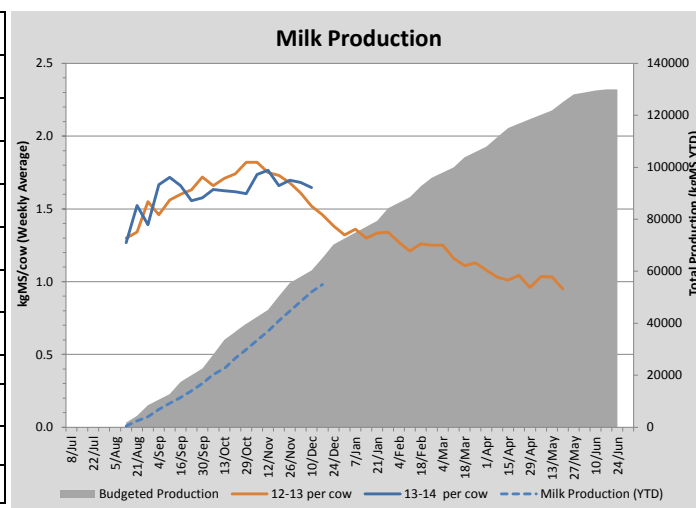
## Key Summary Points

- 1** Pasture growth is just matching cow requirements.
- 2** Silage has been introduced into the milkers diet to maintain the average pasture cover at the current level.
- 3** Nitrogen was applied to 29 hectares of the milking platform.

PASTURE INFORMATION	Farm			Irrigated			Rain-fed		
	Last Week	This Week	Variation	Last Week	This Week	Variation	Last Week	This Week	Variation
Grazed milking area (ha)	110.5	110.5	0.0	41.0	41.0	0.0	69.5	69.5	0
Rotation Length (days)	37	34	-3	32	38	6	41	31	-9
Grazing allocation per day (ha)	3.0	3.3	0.3	1.3	1.1	-0.2	1.7	2.2	0.5
Average time since last grazed (days)	31	27	-4	29	27	-2	32	27	-5
Leaf appearance rate (days per leaf)	10	10	0	10	9	-1	10	11	1
Average Pasture Cover (kgDM/ha)	2295	2365	70	2335	2285	-50	2271	2412	141
Pasture Growth Rate (kgDM/ha/day)	32	52	20	29	58	28	34	49	15
Post Grazing Biomass (kgDM/ha)	1799	1688	-111						
Nitrogen applied YTD (kgN/ha)	54	69	15	0	23	23	0	10	10

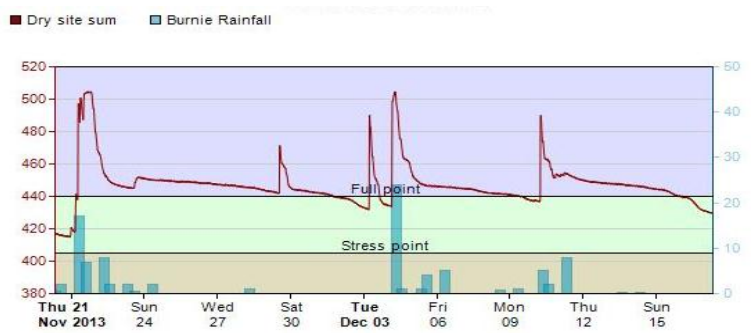
\*Please note all pasture calculations detailed above are based on the current Grazed Milking Area

MILK PRODUCTION	Last Week	This Week	Variation
Average No. cows in milk (vat)	329	324	-5
Litres per cow	22.9	21.4	-1.5
% Fat	4.13	3.46	-0.67
% Protein	3.05	0.00	-3.05
MS/cow/day	1.65	#N/A	#N/A
MS/ha/day	4.80	#N/A	#N/A
BMCC	152	123	-29
Average Liveweight (kg)	495	499	4
	Budget	To Date	Variation
Total Milk Production (kgMS)	65,155	54,901	84%
MS/ha YTD	582	525	-57

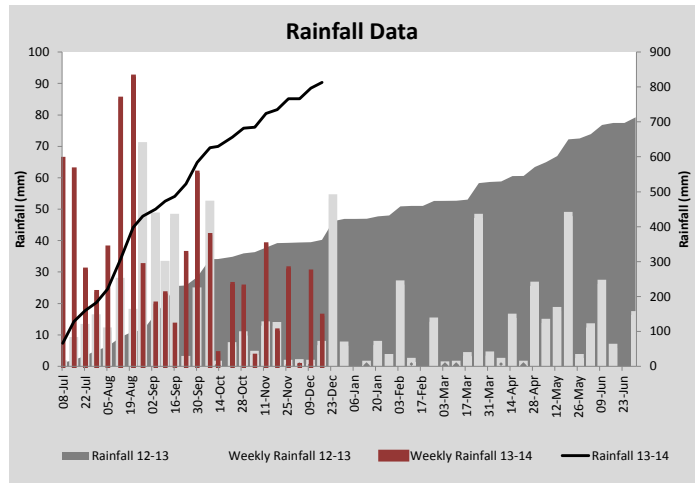
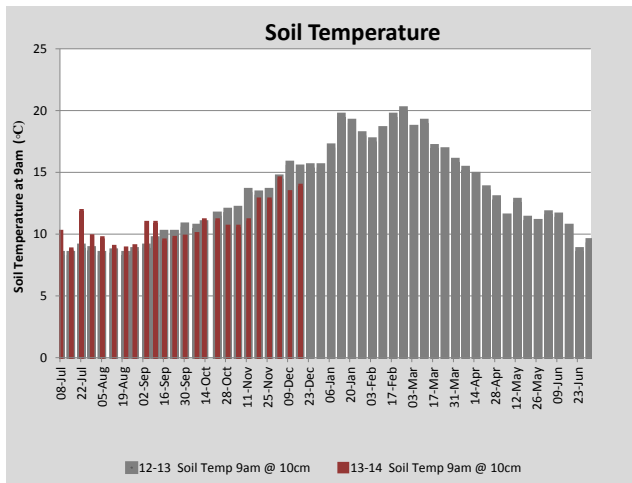


Last 7 days					
Milkers Diet	kg DM	MJ ME	CP (%)	NDF (%)	\$/cow
Pasture Intake	11.7	10.8	15.4	47.5	0.0
Concentrates	4.0	13.0	11.0	21.0	0.0
Silage	1.7	10.5	15.0	49.0	0.0
Grazed forage	0.0	0.0	0.0	0.0	0.0
Other feeds	0.0	0.0	0.0	0.0	0.0
<b>Total</b>	<b>17.4</b>	<b>196.2</b>	<b>14.3</b>	<b>41.6</b>	<b>0</b>
<b>Target</b>		<b>191</b>	<b>16-18</b>	<b>&gt;33</b>	<b>0</b>

Note: silage nutritional content is estimated based on pasture analysis during silage season, testing will be conducted early in 2014.



Soil moisture (red line) under the centre pivot irrigator



Analysis			
Expected growth rate next 7 days (kgDM/ha/day)	45	Target Leaf Grazing Stage	2.0
Total Demand from Pasture (kgDM/ha/day)	48	Predicted APC 7 days time	2344
APC balance (kgDM/ha/day)	-3	Predicted APC Change	-20.7

## Discussion

With pasture growth rates now matching (rather than exceeding) cow requirements, strategies are being put in place to maintain the average pasture cover at the current level. Nitrogen has been applied to almost a third of the milking platform (29 hectares) and a small amount of silage has been added to the cows diet. Fertiliser has been applied to the More Milk From Forage trial paddocks (21 hectares). This fertiliser was an N:P:K:S mix of 12:14:14:7 applied at a rate of 333 kg/ha. Capital fertiliser applications to the remainder of the farm will be undertaken in January or February based on soil testing that was conducted in October.

# 17 December 2013

