

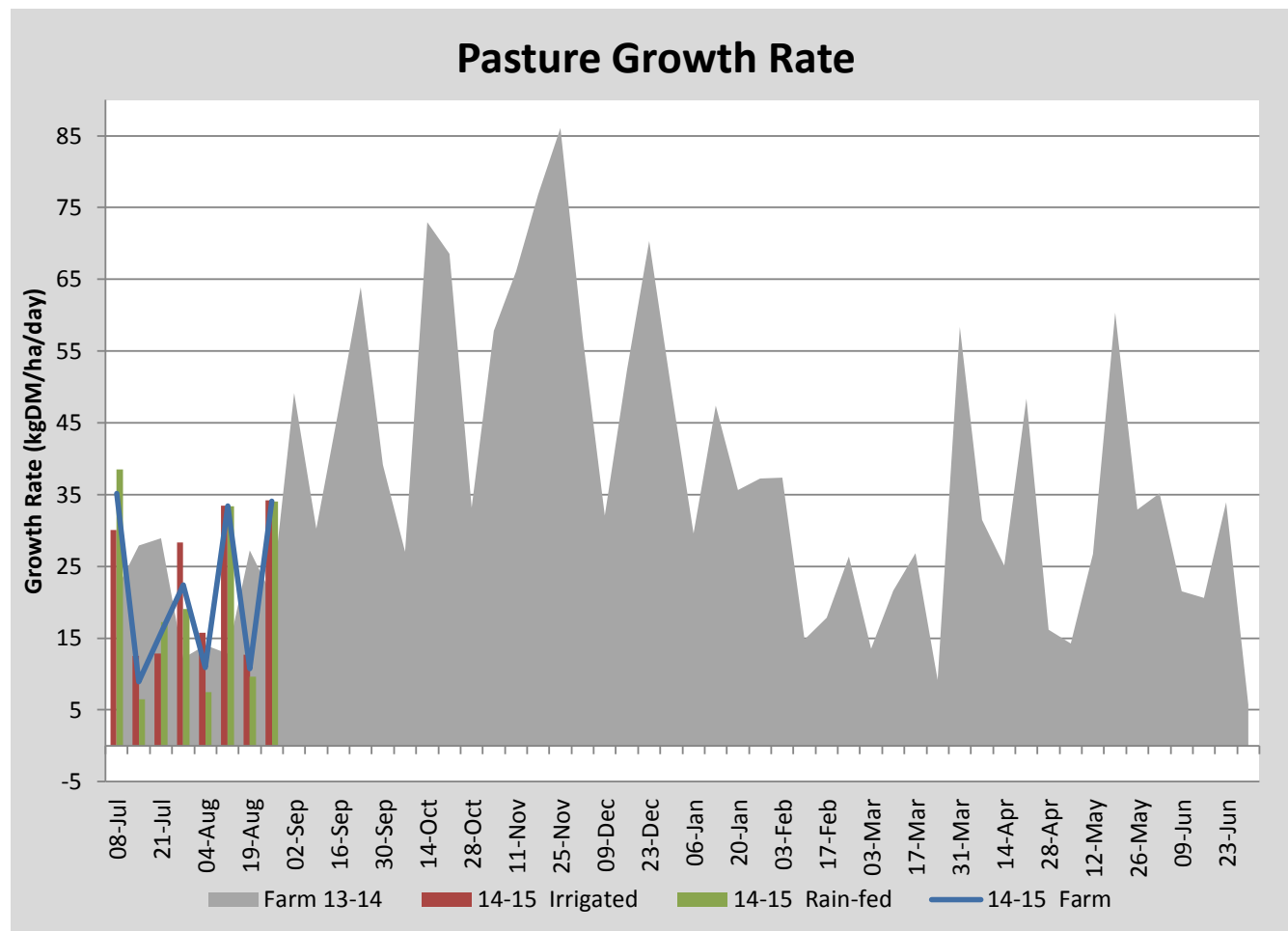
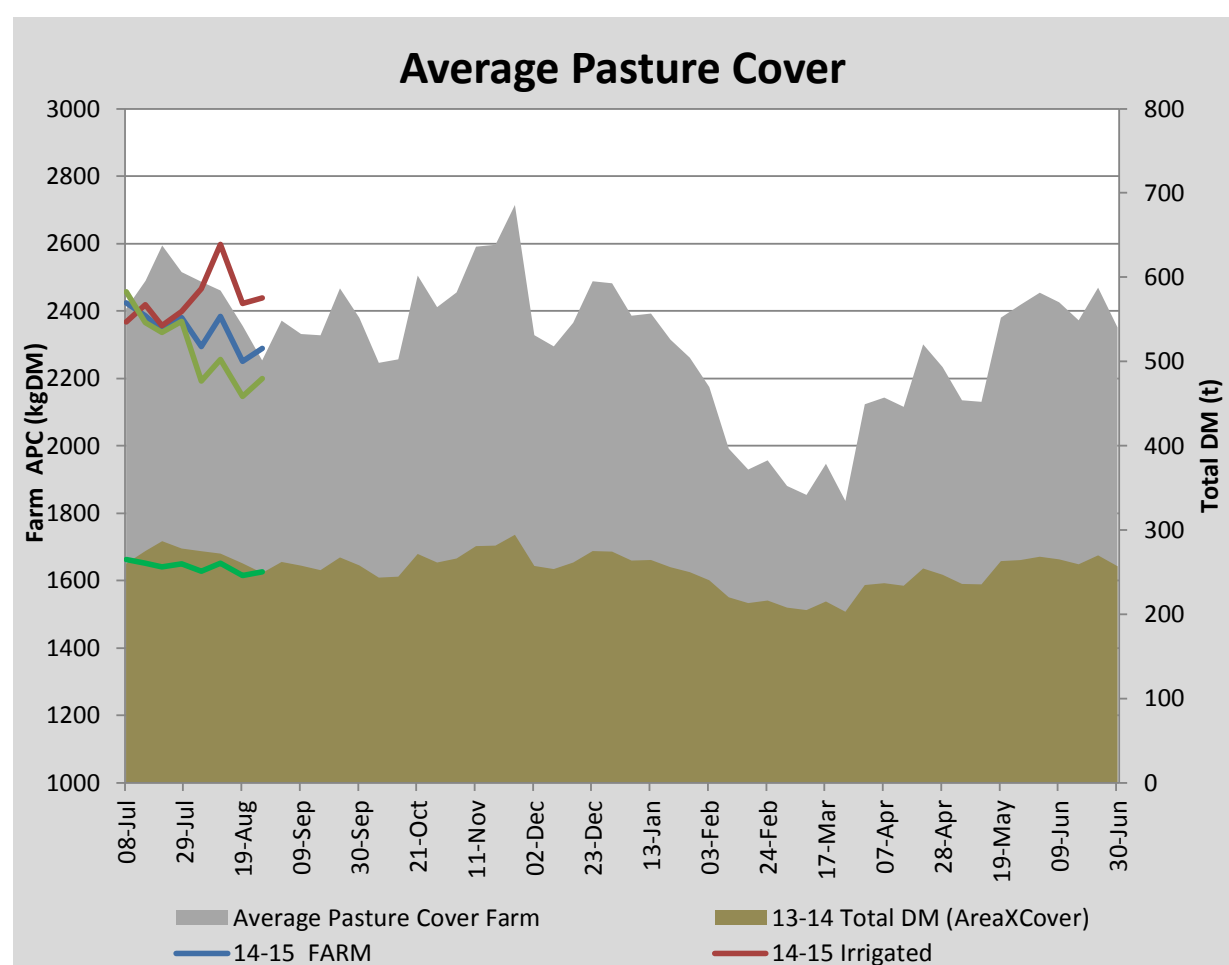
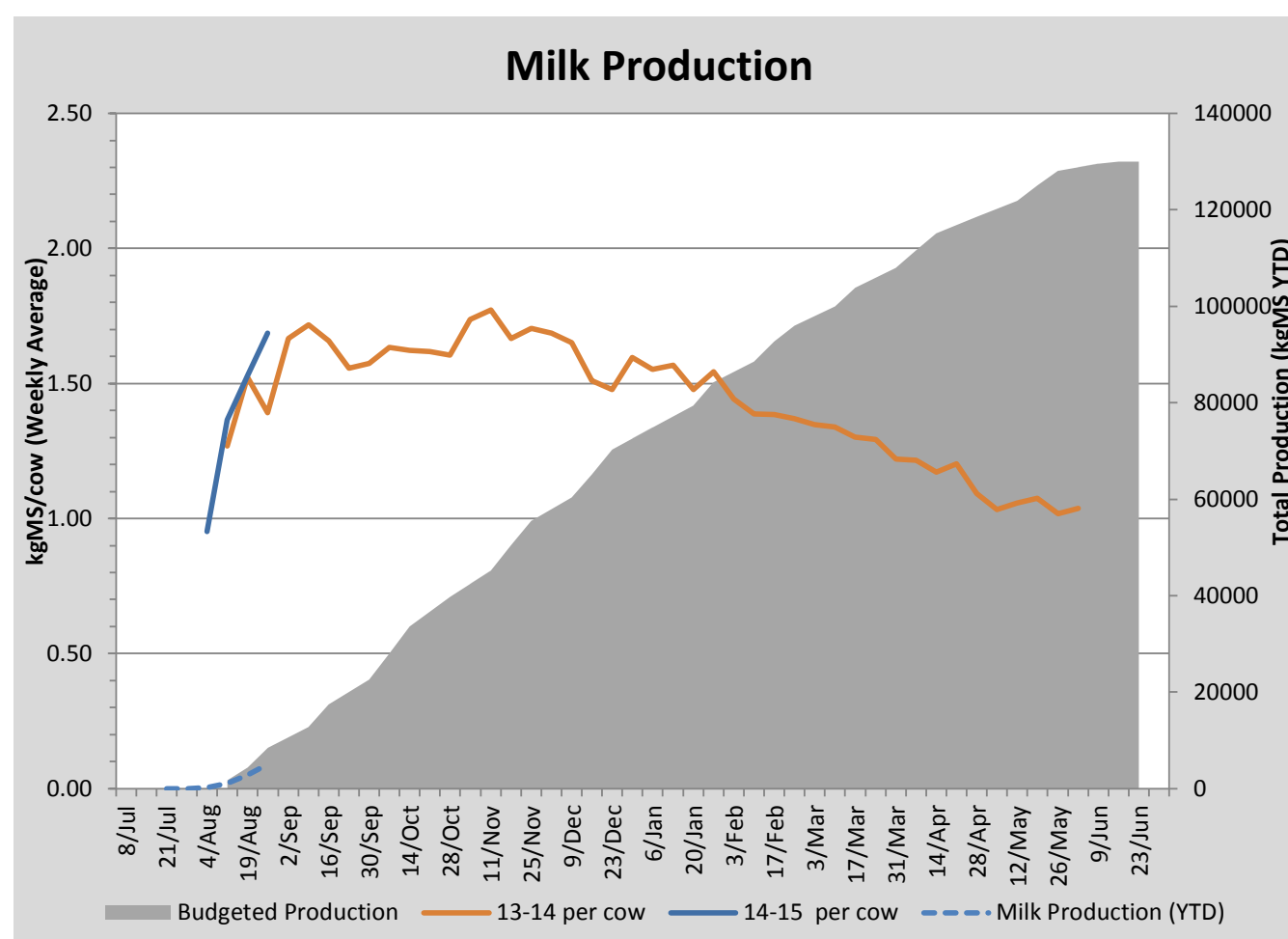
Key Summary Points

- 1 Average pasture cover increased this week to 2290kgDM/ha with good average pasture growth rates of 34kgDM/ha/day.
- 2 Concentrate allocation was increased to 4kgDM/head/day this week as we try to hold the rotation on the available portion of the milking platform. 80ha of the milking platform is available outside of paddocks locked up for the MMFF feed base trial, due to be grazed late September.
- 3 Other work completed on farm this week includes the removal of cypress pine hedges and re-fencing the road boundary.

PASTURE INFORMATION	Farm			Irrigated			Rain-fed		
	Last Week	This Week	Variation	Last Week	This Week	Variation	Last Week	This Week	Variation
Grazed milking area (ha)	109.3	109.3	0.0	41.0	41.0	0.0	68.3	68.3	0
Rotation Length (days)	58	58	0	41	34	-7	76	98	22
Grazing allocation per day (ha)	1.9	1.9	0.0	1.0	1.2	0.2	0.9	0.7	-0.2
Average time since last grazed (days)	94	90	-5	87	63	-24	99	106	7
Leaf appearance rate (days per leaf)	17	16	-2	17	16	-2	17	16	-2
Average Pasture Cover (kgDM/ha)	2250	2290	40	2421	2439	18	2147	2200	53
Pasture Growth Rate (kgDM/ha/day)	11	34	23	13	34	22	10	34	24
Post Grazing Biomass (kgDM/ha)	1465	1716	251						
Nitrogen applied YTD (kgN/ha)	17	30	14	0	17	17	0	12	12

*Please note all pasture calculations detailed above are based on the current Grazed Milking Area

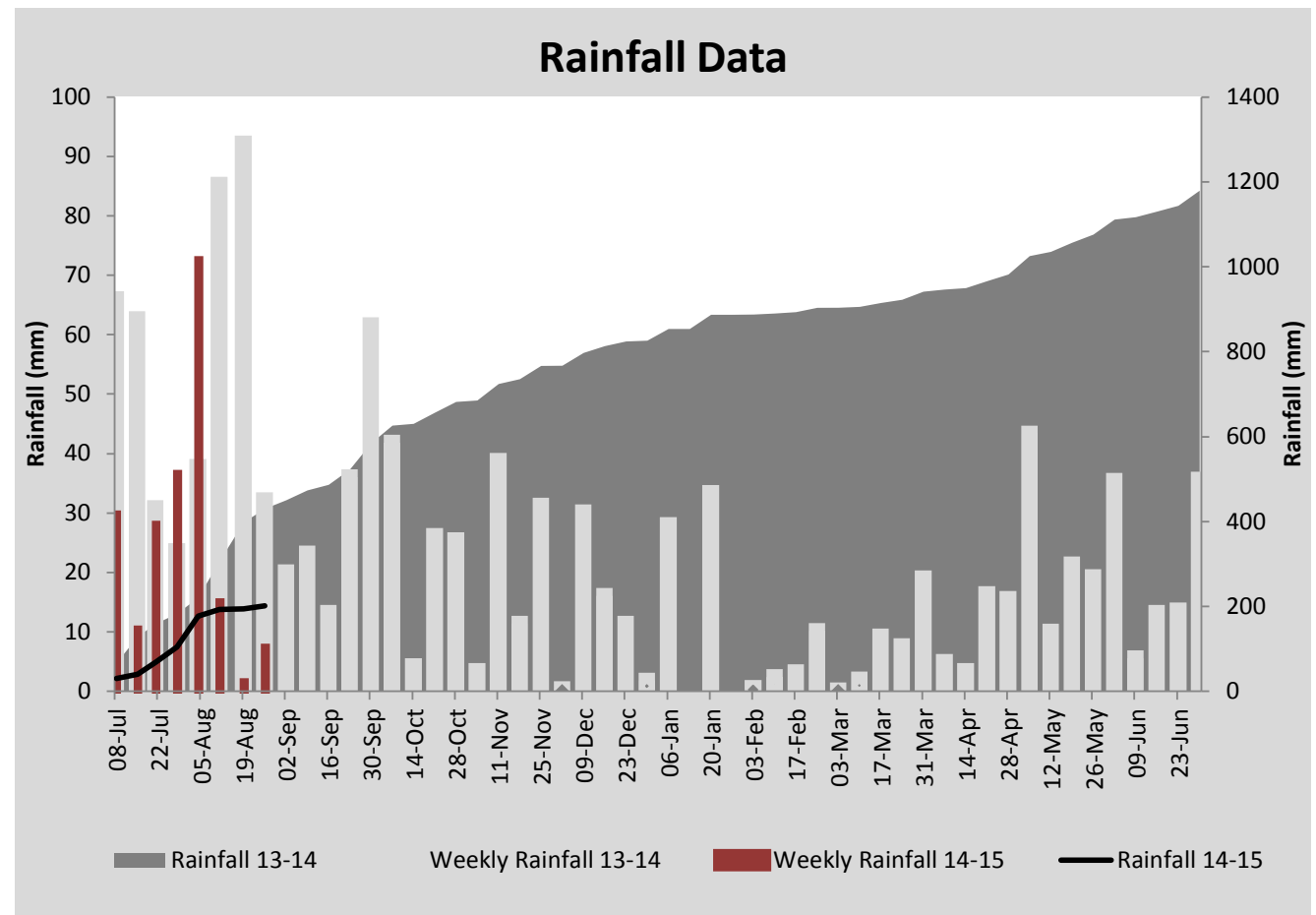
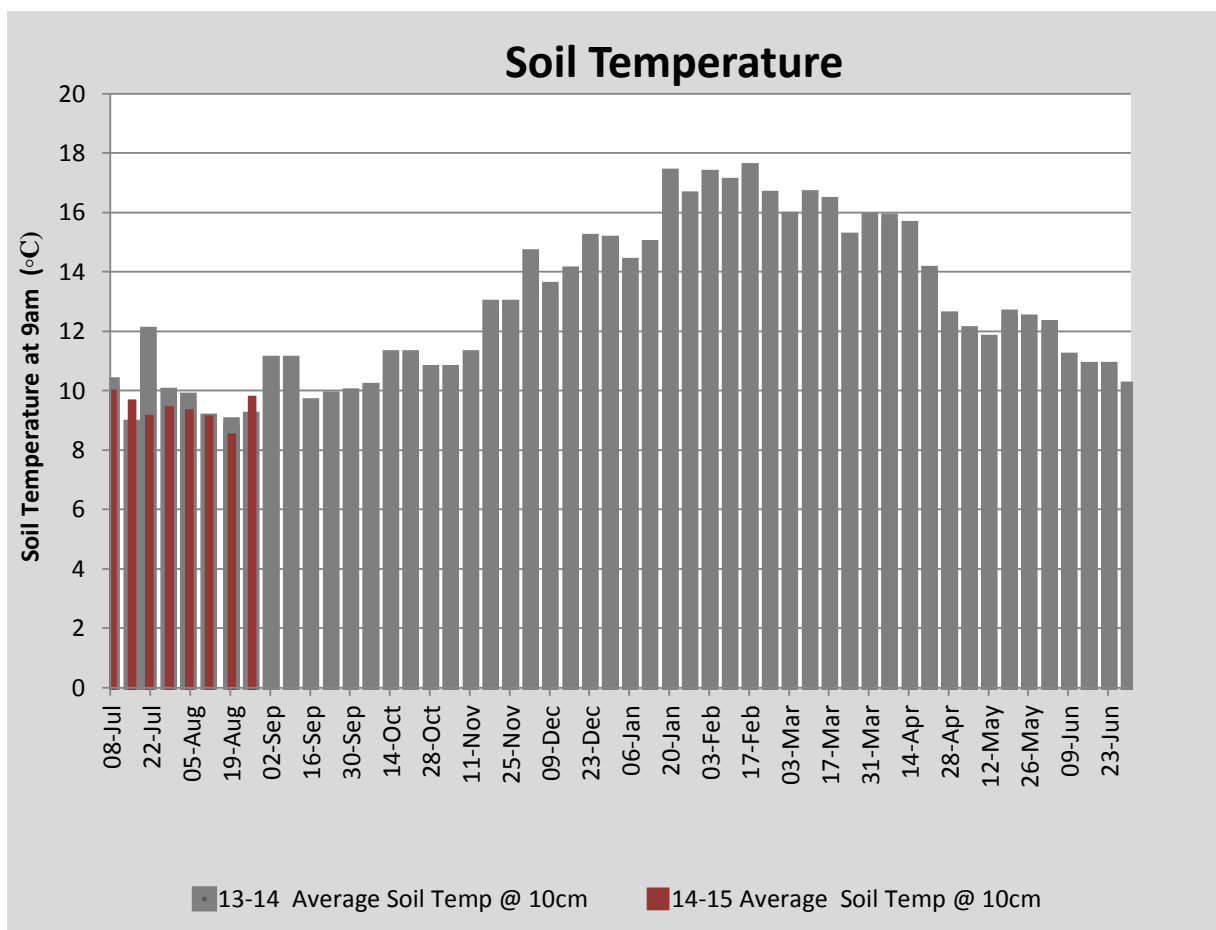
MILK PRODUCTION	Last Week	This Week	Variation
Average No. cows in milk (vat)	146	188	42
Litres per cow	18.9	21.5	2.6
% Fat	4.65	4.57	-0.07
% Protein	3.31	3.20	-0.11
MS/cow/day	1.53	1.69	0.16
MS/ha/day	1.97	2.81	0.84
BMCC	141	185	
Average Liveweight (kg)	0	0	
	Budget	To Date	Variation
Total Milk Production (kgMS)	8,447	4,959	59%
MS/ha YTD	75	40	-36



Last 7 days					
Milkers Diet	kg DM	MJ ME	CP (%)	NDF (%)	\$/cow
Pasture Intake	10.7	13.0	28.0	40.7	0.0
Concentrates	4.0	12.5	16.0	16.5	0.0
Silage	1.3	10.5	15.0	49.0	0.0
Grazed forage	0.0	0.0	0.0	0.0	0.0
Other feeds	0.0	0.0	0.0	0.0	0.0
Total	16	202.8	23.9	35.3	0
Target		191	16-18	>33	0



Cypress pine hedges are being removed from the milking platform



Analysis			
Expected growth rate next 7 days (kgDM/ha/day)	30	Target Leaf Grazing Stage	3.0
Total Demand from Pasture (kgDM/ha/day)	33	Predicted APC 7 days time	2266
APC balance (kgDM/ha/day)	-3	Predicted APC Change	-23.3

Discussion

Average pasture cover increased this week to 2290kgDM/ha with good average pasture growth rates of 34kgDM/ha/day. Concentrate allocation was increased to 4kgDM/head/day this week as we try to hold the rotation on the available portion of the milking platform. 80ha of the milking platform is available outside of paddocks locked up for the MMFF feed base trial, due to be grazed late September. Presently growth rates are matching demand however we expect a feed deficit to develop over the coming weeks as more cows return to the platform. To manage this we will be increasing the concentrate fed to 5kgDM/cow/day this coming week and try to hold the rotation at or greater than 40 days. Heifers currently being agisted off farm will return within the coming fortnight as the cover on the run-off builds. The focus for the coming week is to continue to ensure timely application of urea between 4 days pre and 7 post grazing.

26 August 2014

