

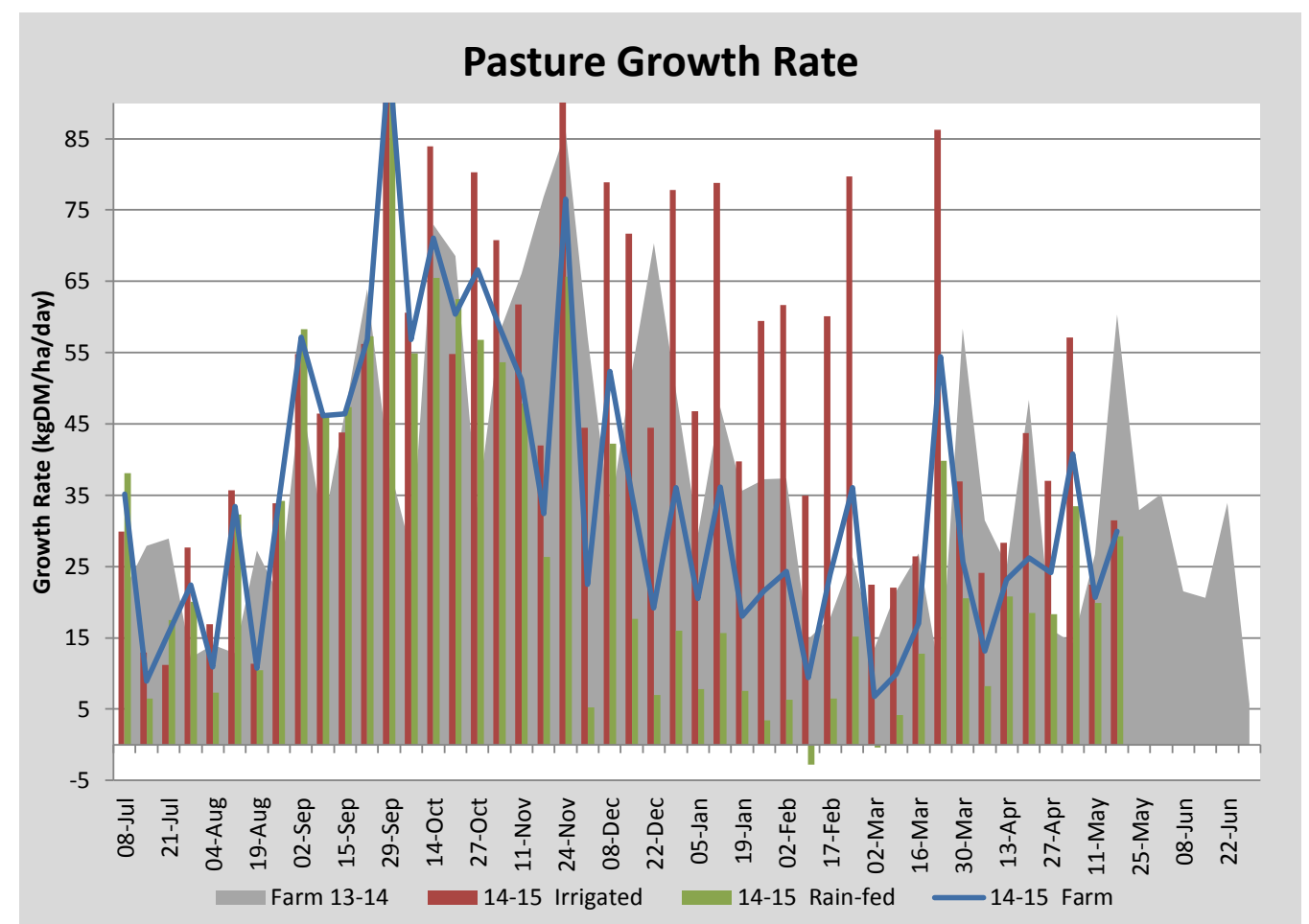
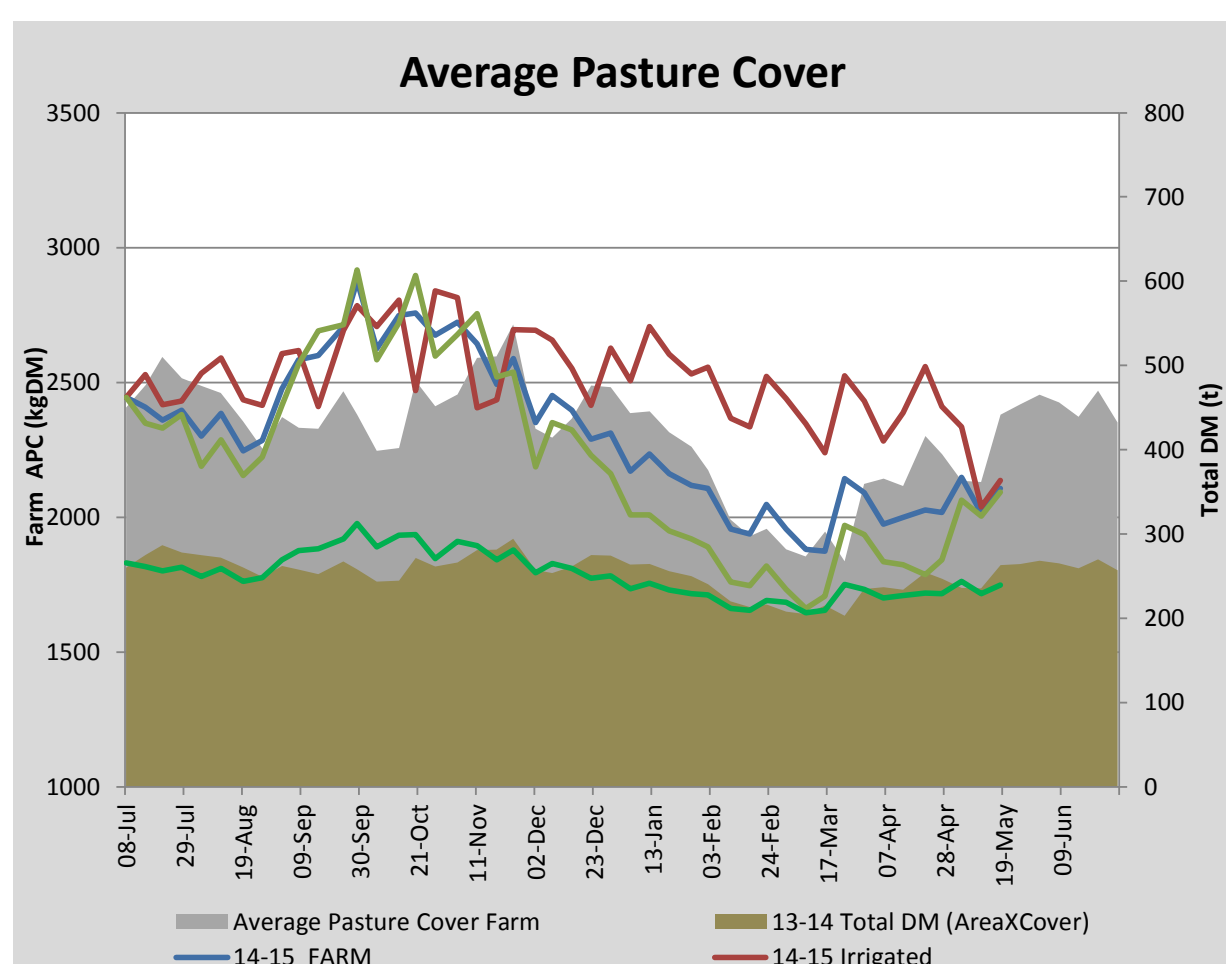
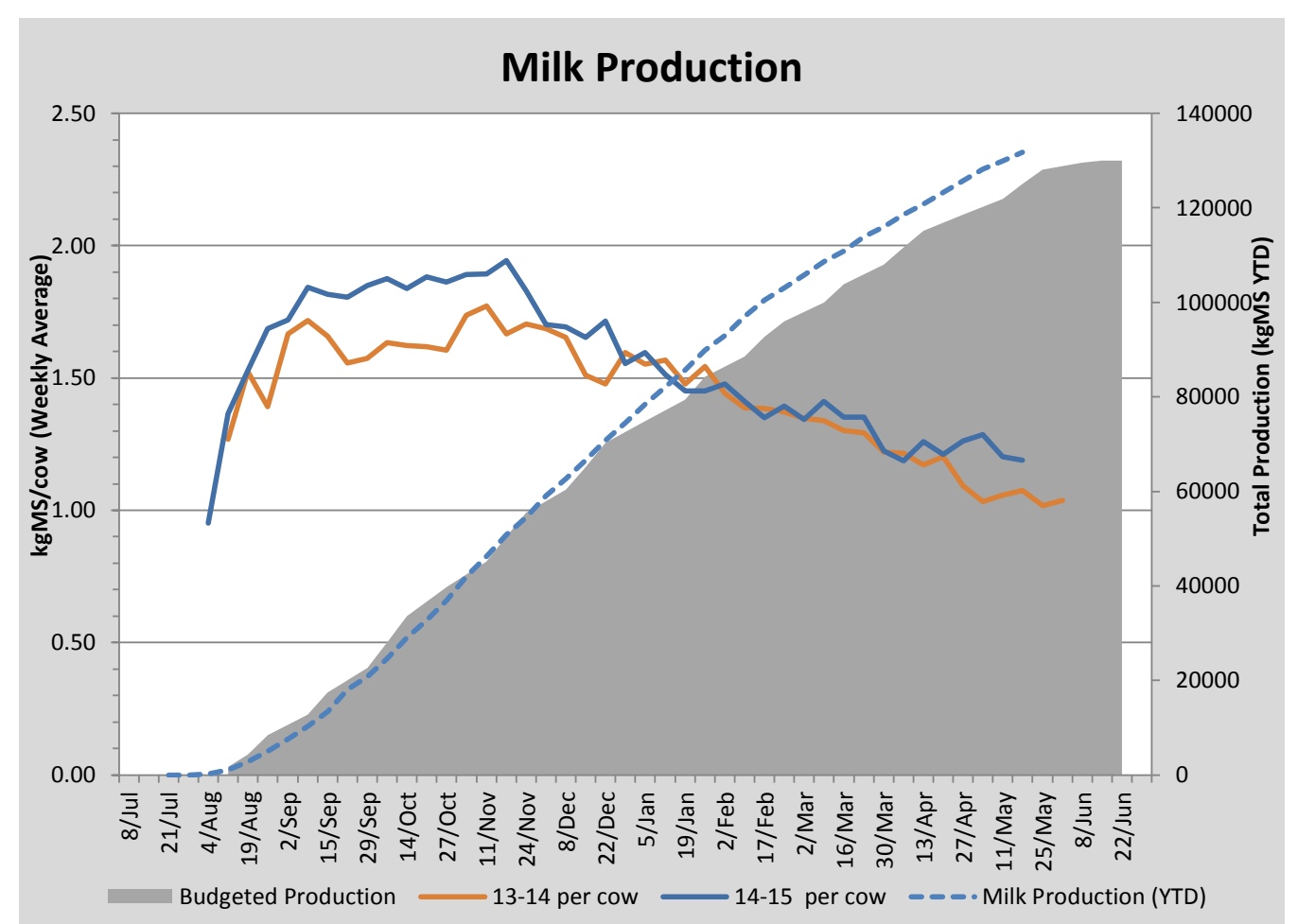
Key Summary Points

1	Average pasture cover built this week to 2107kgDM/ha.
2	Per cow MS production held this week at 1.19kgMS/cow.
3	Other work being completed on farm at the moment includes the installation of 4 automatic calf feeders.

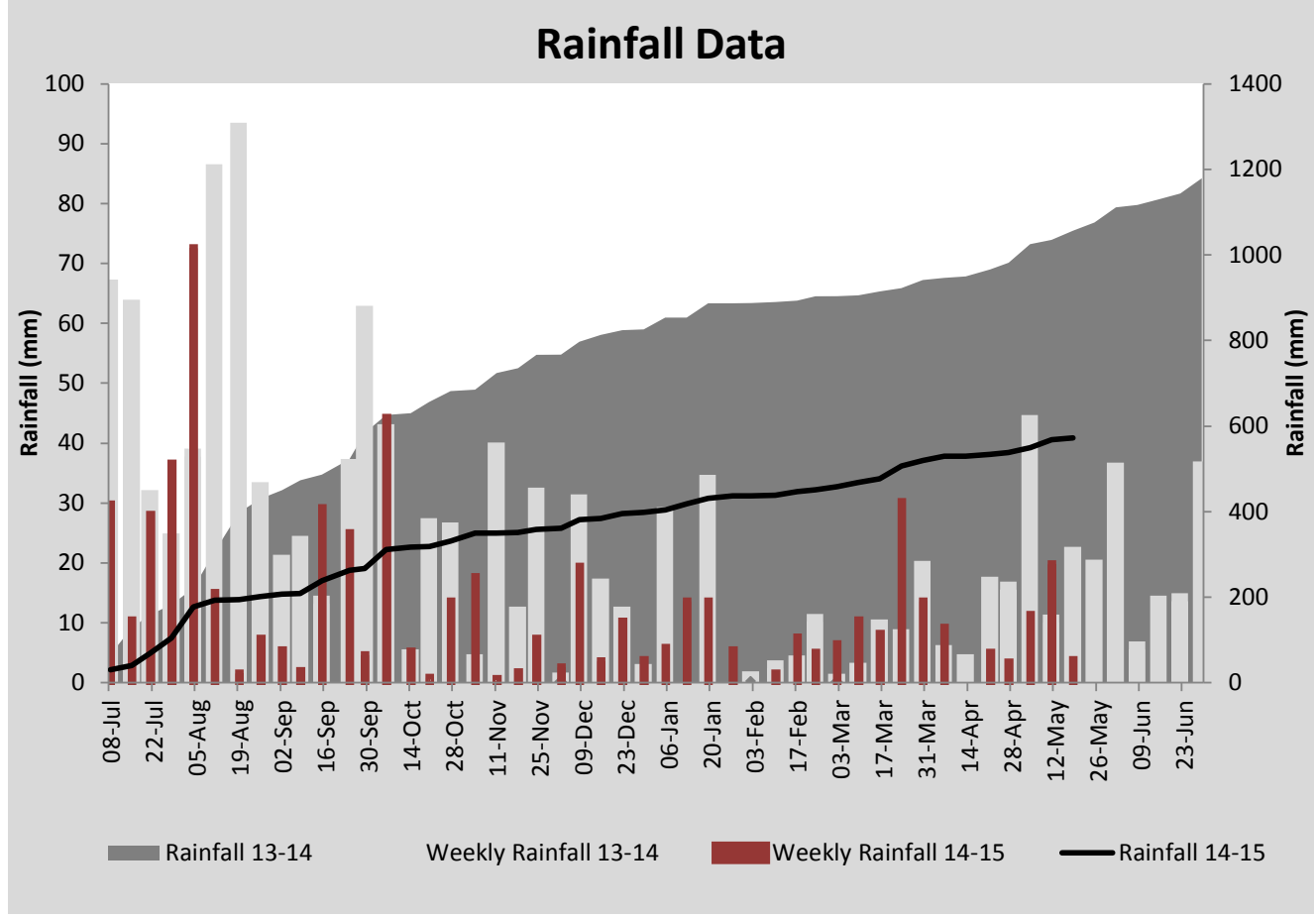
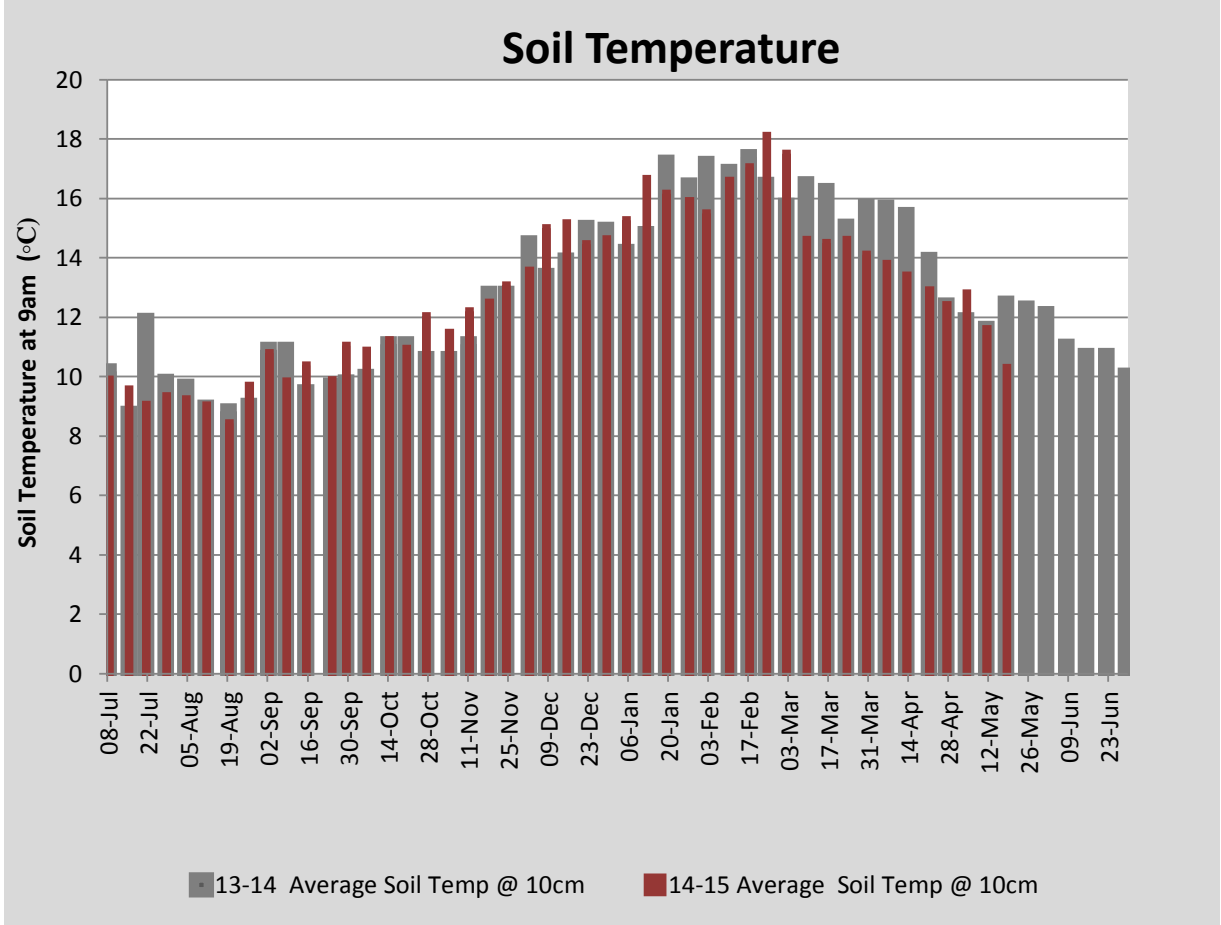
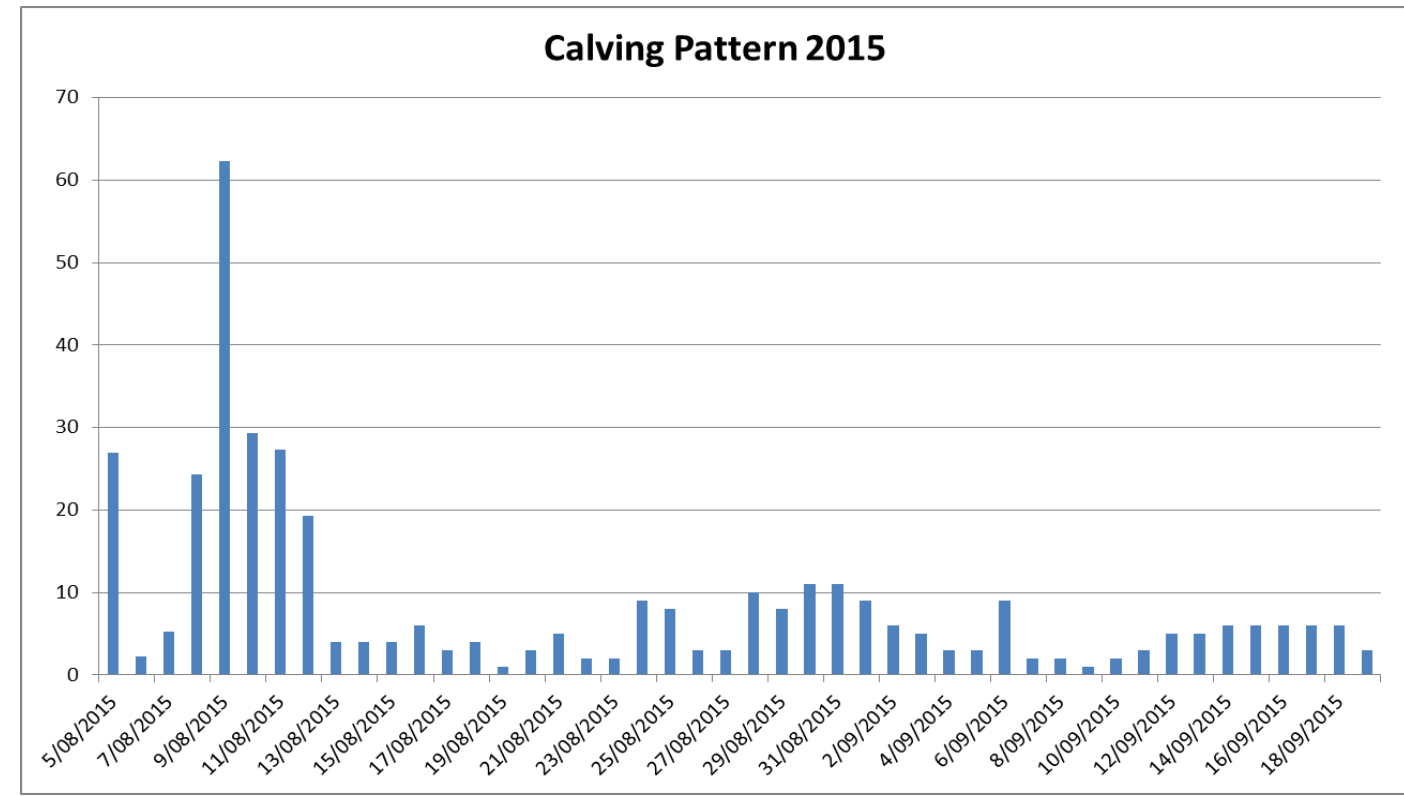
PASTURE INFORMATION	Farm			Irrigated			Rain-fed		
	Last Week	This Week	Variation	Last Week	This Week	Variation	Last Week	This Week	Variation
Grazed milking area (ha)	113.6	113.6	0.0	35.1	35.1	0.0	78.4	78.4	0
Rotation Length (days)	63	71	8	29	50	21	131	87	-44
Grazing allocation per day (ha)	1.8	1.6	-0.2	1.2	0.7	-0.5	0.6	0.9	0.3
Average time since last grazed (days)	62	83	21	43	46	3	70	99	29
Leaf appearance rate (days per leaf)	15	15	0	14	14	0	15	15	0
Average Pasture Cover (kgDM/ha)	2015	2107	92	2037	2137	100	2005	2094	89
Pasture Growth Rate (kgDM/ha/day)	21	30	9	22	32	9	20	29	9
Post Grazing Biomass (kgDM/ha)	1554	1596	42						
Nitrogen applied YTD (kgN/ha)	155	155	0	0	0	0	0	0	0

*Please note all pasture calculations detailed above are based on the current Grazed Milking Area

MILK PRODUCTION	Last Week	This Week	Variation
Average No. cows in milk (vat)	240	240	0
Litres per cow	13.5	13.2	-0.3
% Fat	5.09	5.06	-0.03
% Protein	3.93	3.93	0.00
MS/cow/day	1.20	1.19	-0.01
MS/ha/day	2.55	2.53	-0.03
BMCC	158	144	-14
Average Liveweight (kg)	545	549	4
	Budget	To Date	Variation
Total Milk Production (kgMS)	125,091	131,701	105%
MS/ha YTD	1117	1203	86



Last 7 days					
Milkers Diet	kg DM	MJ ME	CP (%)	NDF (%)	\$/cow
Pasture Intake	7.9	13.2	19.3	44.9	0.0
Concentrates	5.0	12.0	16.0	16.5	0.0
Silage	3.1	11.0	9.5	49.0	0.0
Grazed forage	0.0	0.0	0.0	0.0	0.0
Other feeds	0.0	0.0	0.0	0.0	0.0
Total	16	198.3	16.3	36.8	0
Target	191	16-18	>33	0	0



Analysis			
Expected growth rate next 7 days (kgDM/ha/day)	25	Target Leaf Grazing Stage	2.5-3.0
Total Demand from Pasture (kgDM/ha/day)	20	Predicted APC 7 days time	2142
APC balance (kgDM/ha/day)	5	Predicted APC Change	35.4

Discussion

Average pasture cover increased to 2107kgDM/ha. With a tight calving pattern and therefore high early demand this coming season, we are aiming for a starting pasture cover of 2500kgDM/ha. To achieve this we will be aiming for a cover of 2200kgDM/ha at dry off. Low condition score cows (cows below CS 4.5) will be dried off this coming week the remainder of the herd will be dried off mid June to allow enough time for dairy R&M works to be completed. The focus for the coming week is to apply urea to all grazed paddocks at 46kgN/ha.

18 May 2015

