

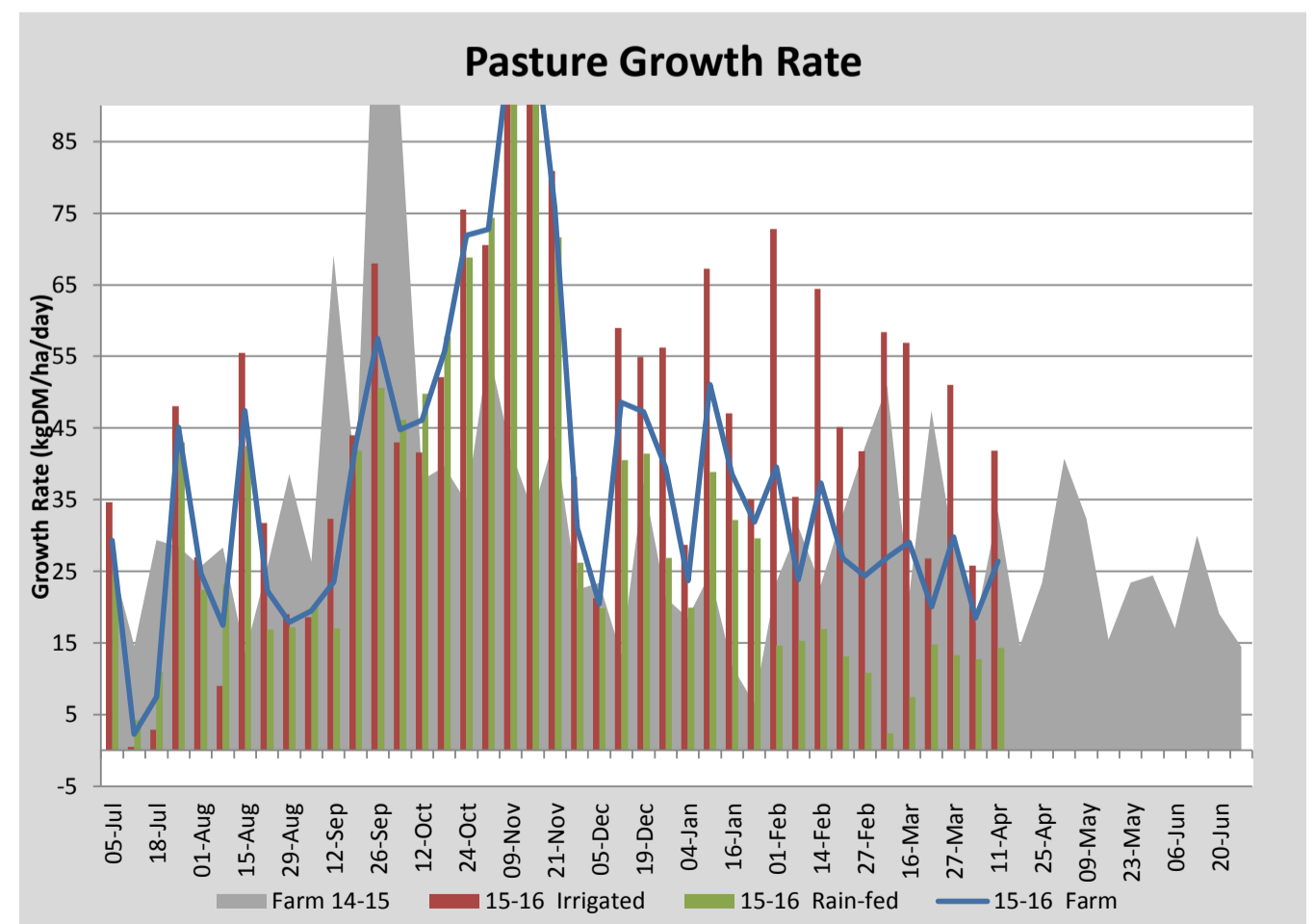
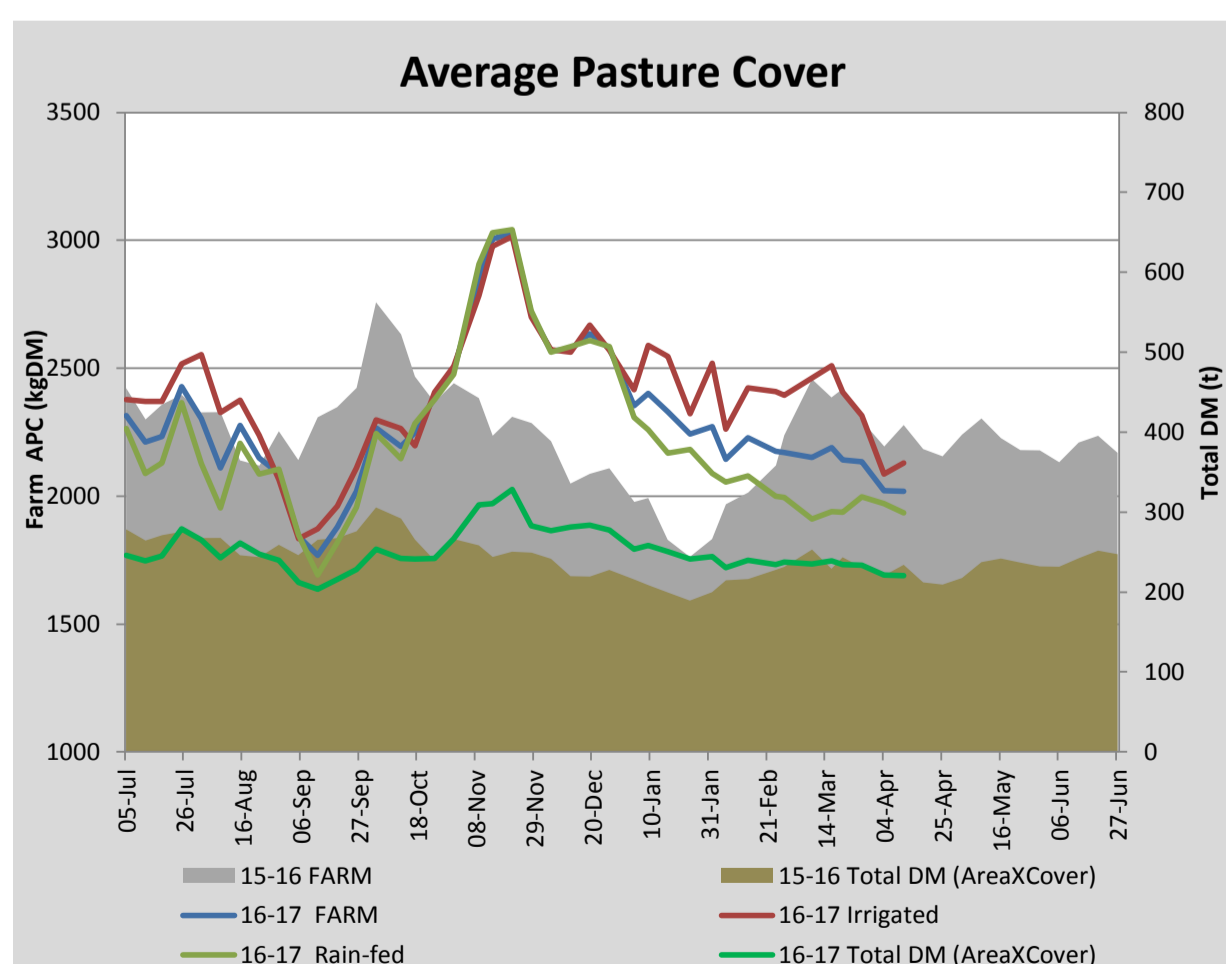
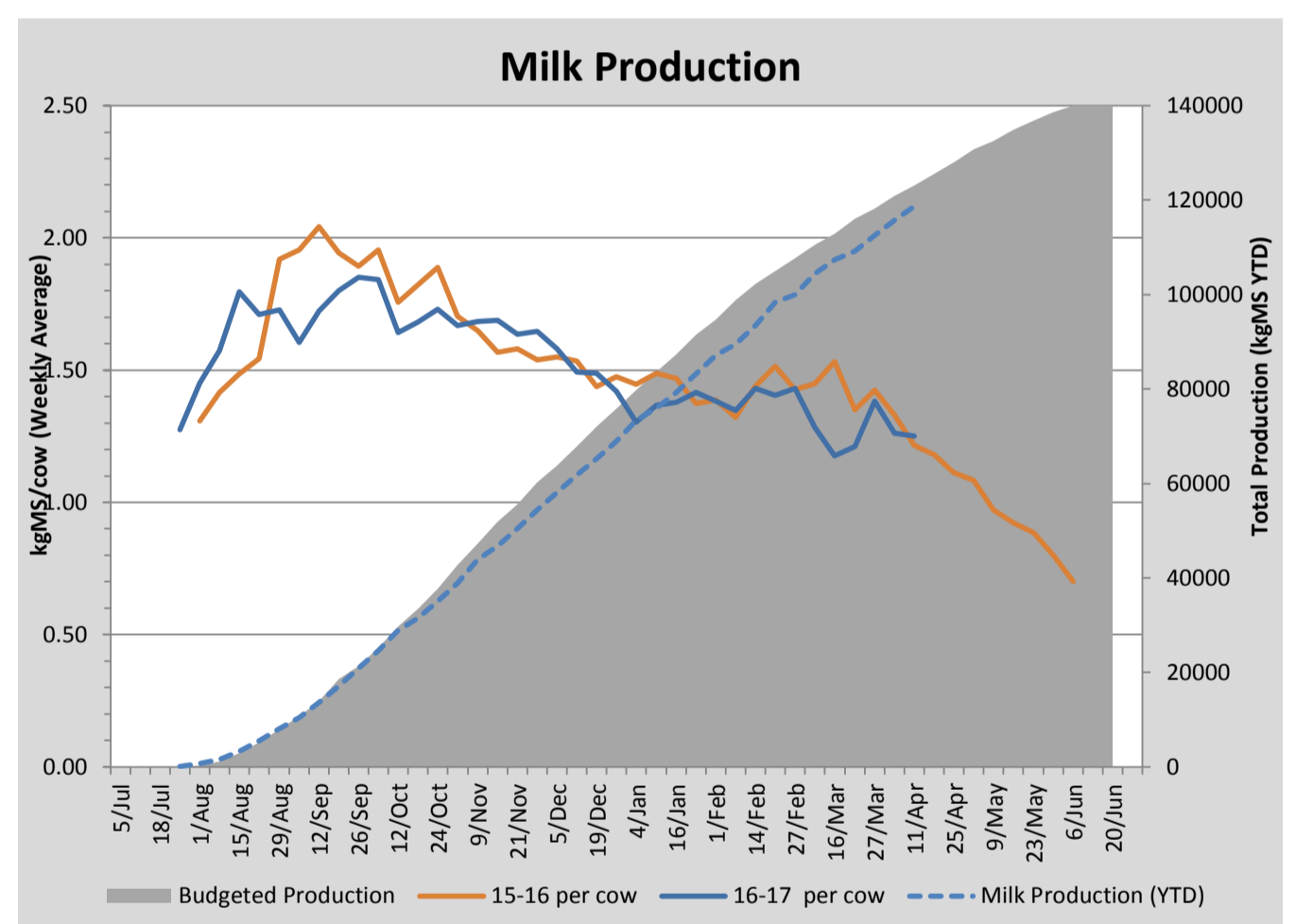
Key Summary Points

- 1 Average pasture cover held this week at 2019kgDM/ha with growth improving on the irrigated paddocks this week and remaining steady on the dryland paddocks.
- 2 Nitrogen (DAP) was spread at 30Kg/ ha on all grazed paddocks this week.
- 3 The key focus for the coming week is to maintain or extend the average rotation length across the milking platform to build pasture cover.

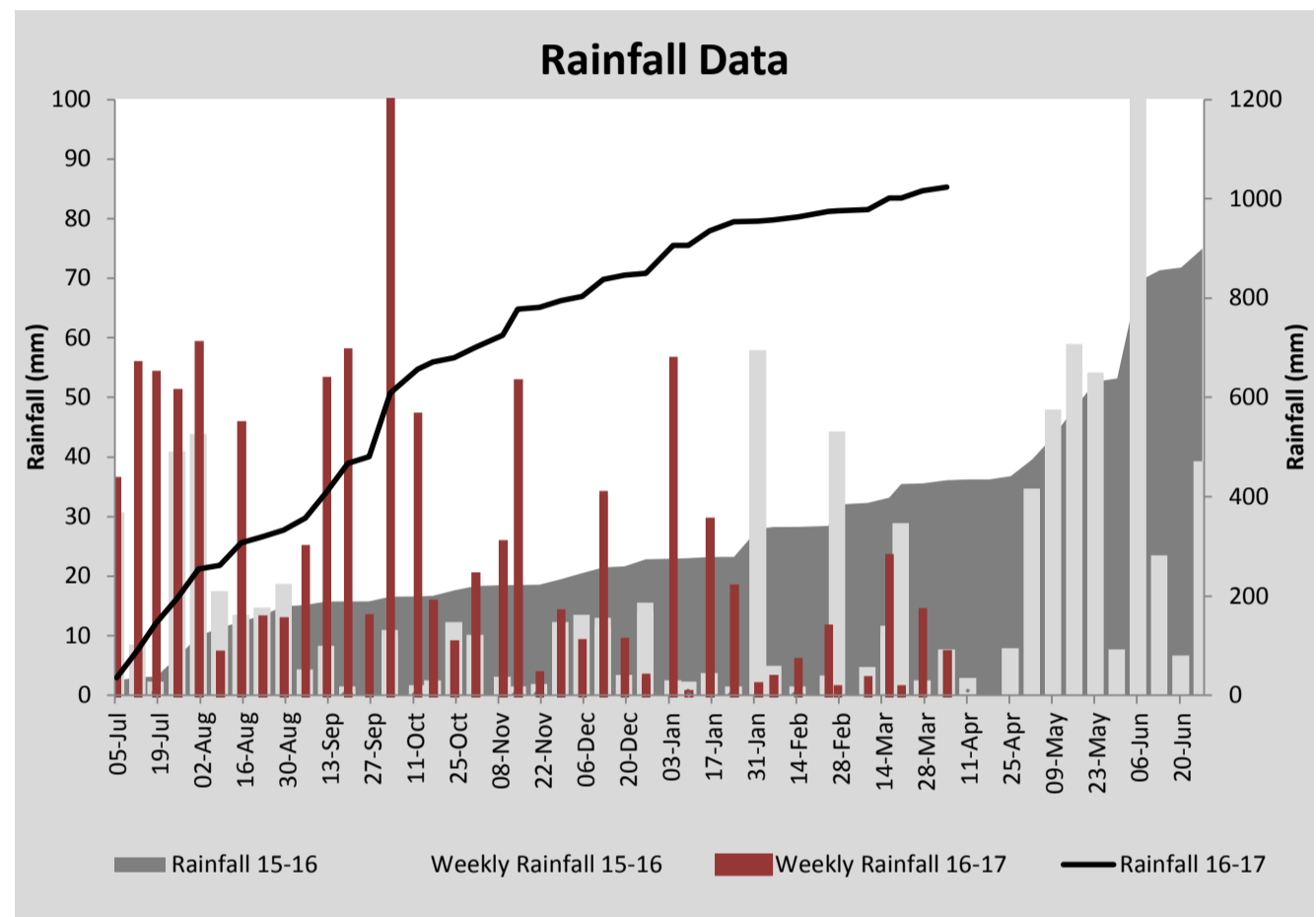
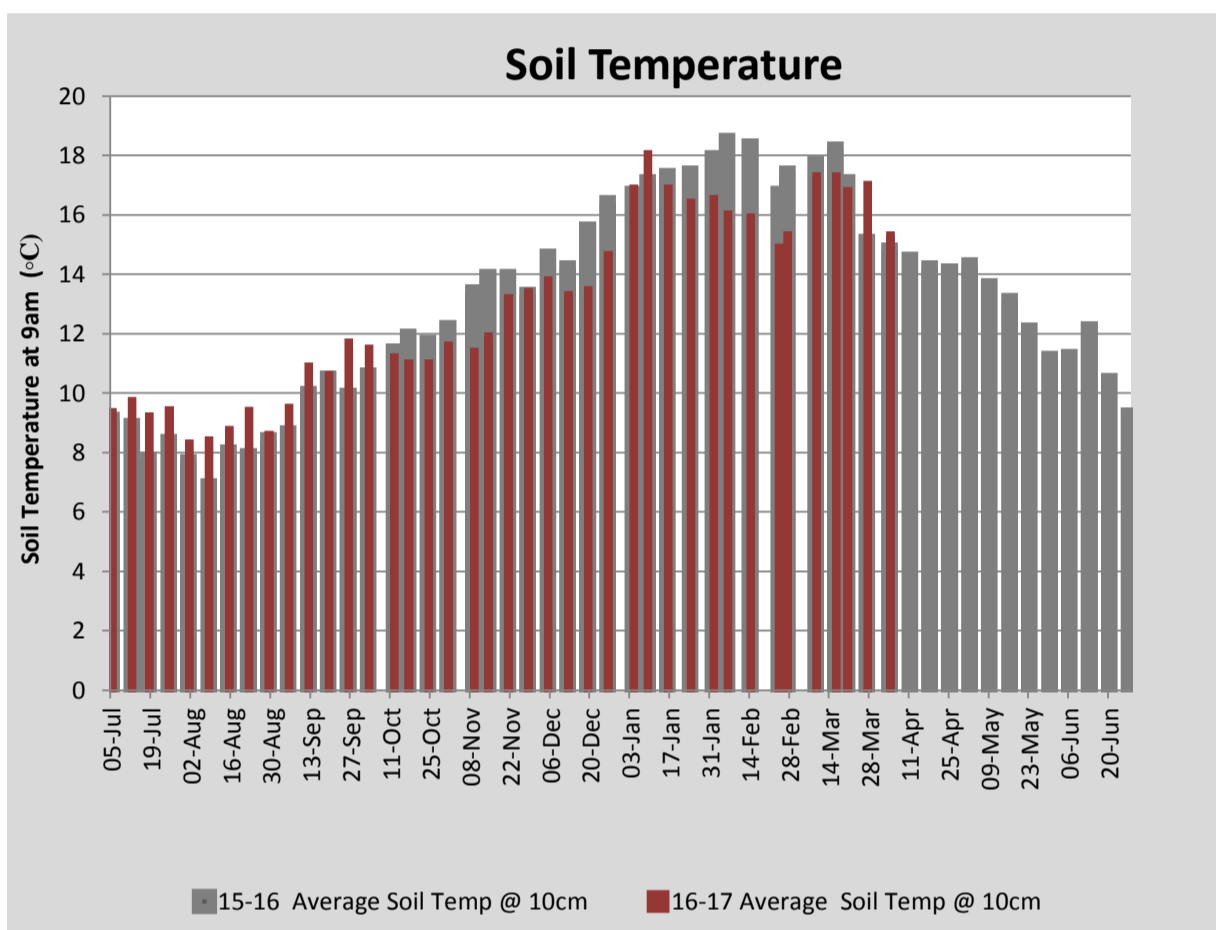
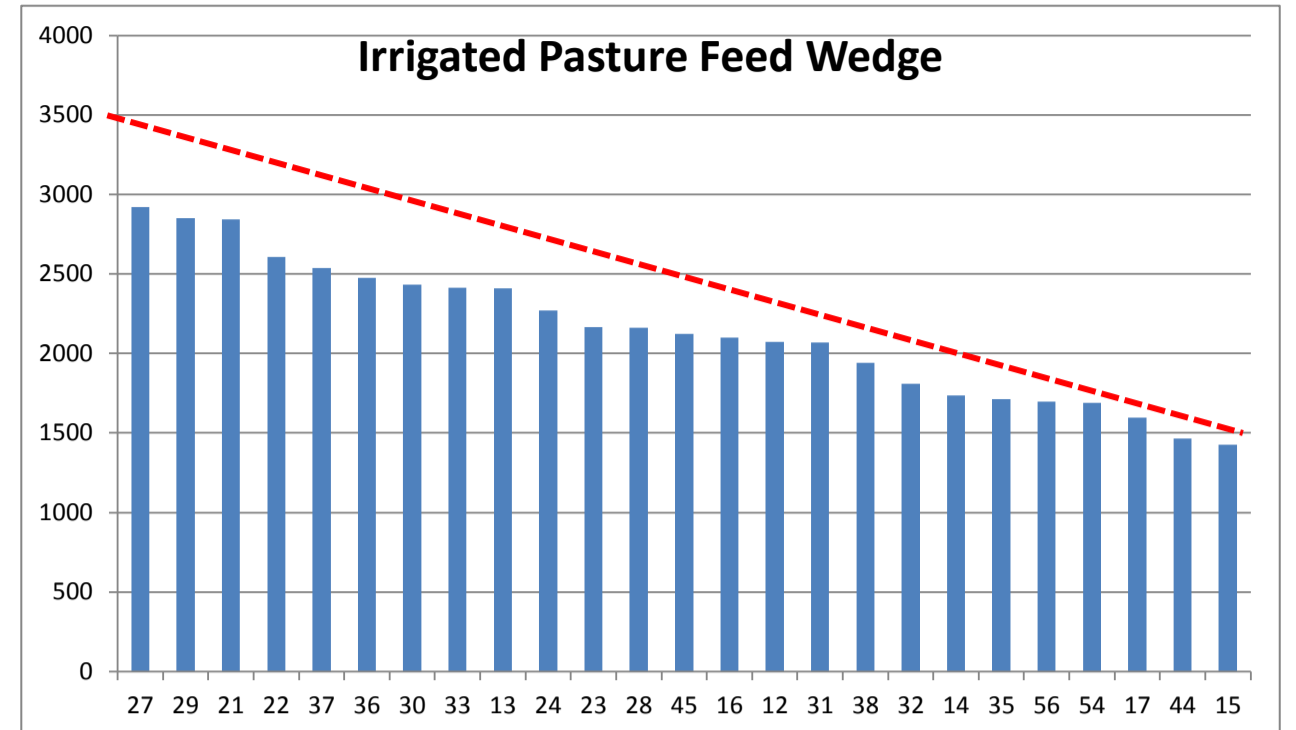
PASTURE INFORMATION	Farm			Irrigated			Rain-fed		
	Last Week	This Week	Variation	Last Week	This Week	Variation	Last Week	This Week	Variation
Grazed milking area (ha)	109.3	109.3	0.0	40.5	47.8	7.3	68.8	61.5	-7
Rotation Length (days)	48	38	-10	27	60	33	123	29	-94
Grazing allocation per day (ha)	2.3	2.9	0.6	1.8	0.8	-1.0	0.5	2.1	1.6
Average time since last grazed (days)	40	51	11	20	35	15	56	63	7
Leaf appearance rate (days per leaf)	13	13	0	9	9	0	16	16	0
Average Pasture Cover (kgDM/ha)	2021	2019	-2	2086	2129	43	1971	1934	-37
Pasture Growth Rate (kgDM/ha/day)	18	26	8	26	42	16	13	14	2
Post Grazing Biomass (kgDM/ha)	1420	1557	137						
Nitrogen applied YTD (kgN/ha)	163	177	13	0	19	19	0	9	9

*Please note all pasture calculations detailed above are based on the current Grazed Milking Area

MILK PRODUCTION	Last Week	This Week	Variation
Average No. cows in milk (vat)	343	343	0
Litres per cow	13.6	13.6	-0.0
% Fat	5.37	5.25	-0.12
% Protein	4.06	3.95	-0.11
MS/cow/day	1.26	1.25	-0.01
MS/ha/day	3.83	3.80	-0.03
BMCC	169,149	134,417	-34,731
Average Liveweight (kg)	0	0	0
	Budget	To Date	Variation
Total Milk Production (kgMS)	123,090	118,752	96%
MS/ha YTD	1080	1101	102%



Last 7 days					
Milkers Diet	kg DM	MJ ME	CP (%)	NDF (%)	\$/cow
Pasture Intake	7.3	0.0	0.0	0.0	0.0
Concentrates	6.0	12.9	15.6	20.3	0.0
Silage	3.8	0.0	0.0	0.0	0.0
Grazed forage	0.0	0.0	0.0	0.0	0.0
Other feeds	0.0	0.0	0.0	0.0	0.0
Total	17				0
Target			16-18	>33	0



Analysis			
Expected growth rate next 7 days (kgDM/ha/day)	31	Target Leaf Grazing Stage	2.5-3.0
Total Demand from Pasture (kgDM/ha/day)	20	Predicted APC 7 days time	2099
APC balance (kgDM/ha/day)	11	Predicted APC Change	79.6

Discussion

Average pasture cover held this week at 2019kgDM/ha with growth on the irrigated paddocks improving and growth on the dryland paddocks holding. We will look to hold the rotation at or greater than 40 days to build cover across the milking platform. Per cow milk solid production is holding at 1.25kgMS/cow/day. Nitrogen in the form of DAP was applied to all grazed paddocks this week at a 30kgN/ha. Paddocks testing low in potassium were spread with 14-8-20-4 at 200kg/ka.

11 April 2017

