

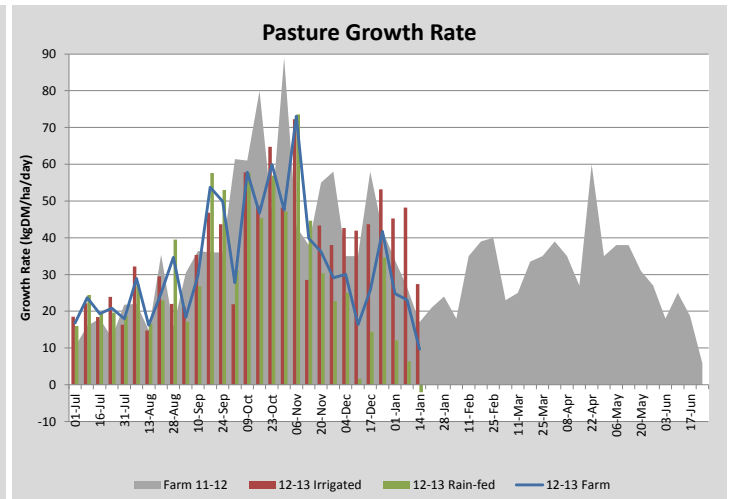
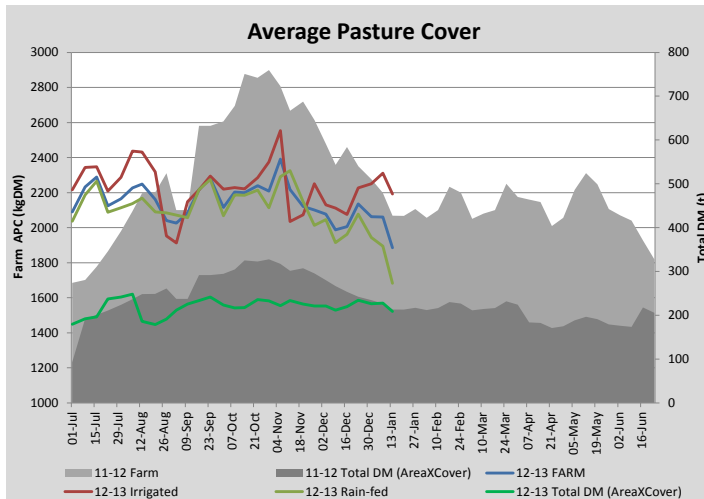
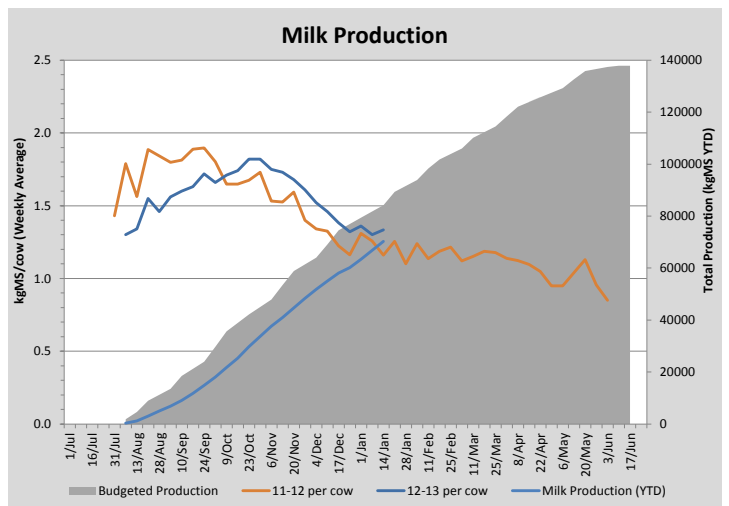
Key Summary Points

- 1** Very low irrigated growth rates and zero growth on rain-fed mean pasture covers have dropped considerably.
- 2** A research trial at the moment (64 cows in a separate herd with ad lib feeding of pasture) means that the feed wedge shape and pasture growth rates may be slightly misleading.
- 3** We will dry off 20 more low producing cows this week to reduce pressure on feed/supplement and lift silage and concentrate intake to the remainder.

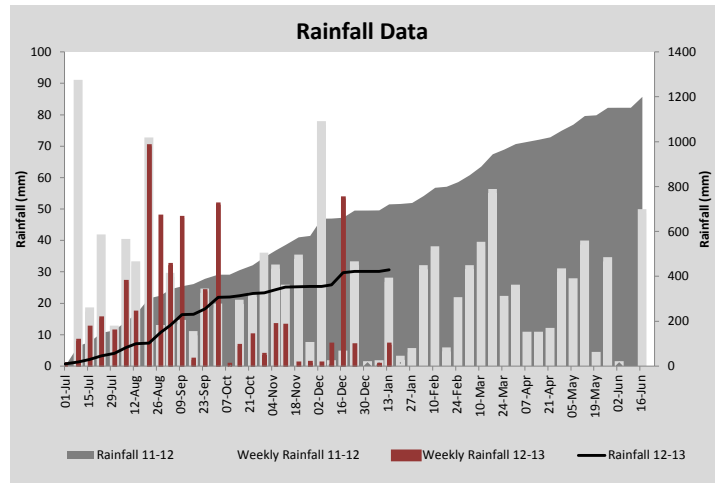
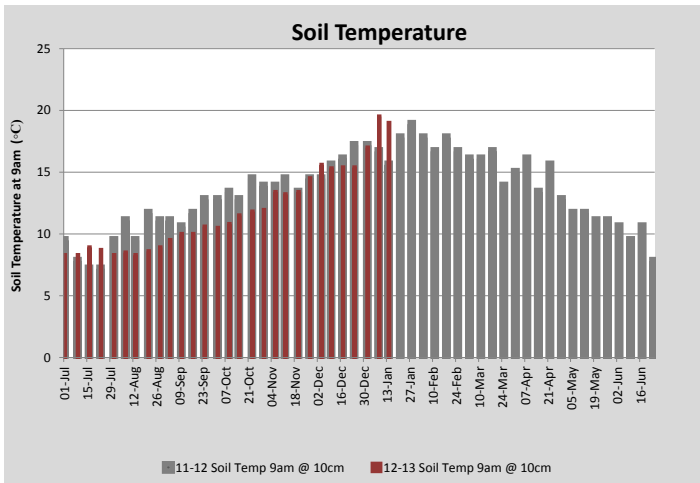
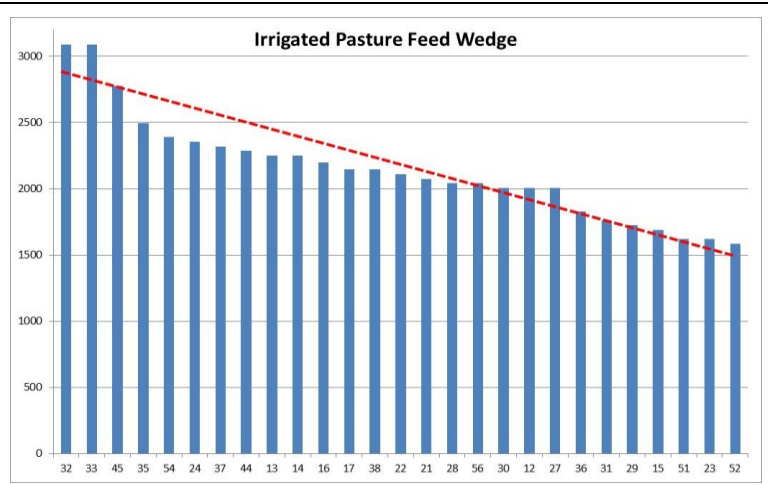
PASTURE INFORMATION	Farm			Irrigated			Rain-fed		
	Last Week	This Week	Variation	Last Week	This Week	Variation	Last Week	This Week	Variation
Grazed milking area (ha)	110.5	110.5	0.0	44.1	44.1	0.00	66.5	66.5	0.00
Rotation Length (days)	43	43		29	29		60	60	
Grazing allocation per day (ha)	2.6	2.6	0.00	1.5	1.5	0.00	1.1	1.1	0.00
Average time since last grazed (days)	44	47	2	24	28	-4	58	59	1
Leaf appearance rate (days per leaf)	13	16	3	9	9	0	15	20	5
Average Pasture Cover (kgDM/ha)	2060	1885	-175	2310	2192	-118	1894	1682	-213
Pasture Growth Rate (kgDM/ha/day)	23	10	-13	48	27	-21	6	-2	-8
Post Grazing Biomass (kgDM/ha)	1550	1500	50						
Nitrogen applied YTD (kgN/ha)	180	180	0	10	0	-10	0	0	0

*Please note all pasture calculations detailed above are based on the current Grazed Milking Area

MILK PRODUCTION	Last Week	This Week	Variation
No cows in milk (vat)	315	314	1.00
Litres per cow	19.0	18.4	0.61
% Fat	4.10	4.17	0.07
% Protein	3.12	3.08	0.04
MS/cow/day	1.30	1.33	0.03
MS/ha/day	3.92	3.57	0.36
BMCC	177	212	35.00
Average Liveweight (kg)			
	Budget	To Date	Variation
Total Milk Production (kgMS)	84204	70222	83%
MS/ha YTD	752	627	-125



Last 7 days					
Milkers Diet	kg DM	ME	CP	NDF	\$/cow
Pasture Intake	9.0	10.5	0.0	0.0	0.0
Concentrates	4.5	11.0	0.0	0.0	0.0
Silage	4.5	10.0	0.0	0.0	0.0
Grazed forage	0.0	0.0	0.0	0.0	0.0
Other feeds	0.0	0.0	0.0	0.0	0.0
Total	18	189	0	0	0
Target	18		0	0	0



Analysis			
Expected growth rate next 7 days (kgDM/ha/day)	18	Target Leaf Grazing Stage	3.0
Total Demand from Pasture (kgDM/ha/day)	20	Predicted APC 7 days time	1871
APC balance (kgDM/ha/day)	-2	Predicted APC Change	-13.7

Discussion

The first 20 day sampling period of the More Milk From Forages trial is underway and is using 64 of the cows from the main herd. Because of the trial we have grazed more paddocks than our planned rotation length would suggest. However, the requirements of the trial design mean that cows are leaving high residuals and not necessarily grazing the entire paddocks. This means there is substantial feed left behind that we are progressively cleaning up with the main herd. Overall this means that the rotation length/area used per day will stay in check. This also means that we will effectively be grazing from the middle of the feed wedge for much of the week meaning that the shape of the current wedge is slightly misleading. However, we definitely are facing a substantial feed deficit (which is likely to worsen - see predicted wedge). We will address this by drying off a further 20 lower producing cows/lighter first year heifers and increasing silage intake to 5kg/cow/day with concentrate also increased to 5kg/cow/day for the remaining milkers (other than the 64 cows in the MMFF trial who are receiving a set 4.5kg concentrate and no silage). If we can achieve 40kgDM/ha/day growth on irrigated pastures for the next 7 days (and 0 on the rain-fed) this will achieve average growth close to our pasture demand of 20kgDM/ha/day and allow us to hold average cover.

14 January 2013

