

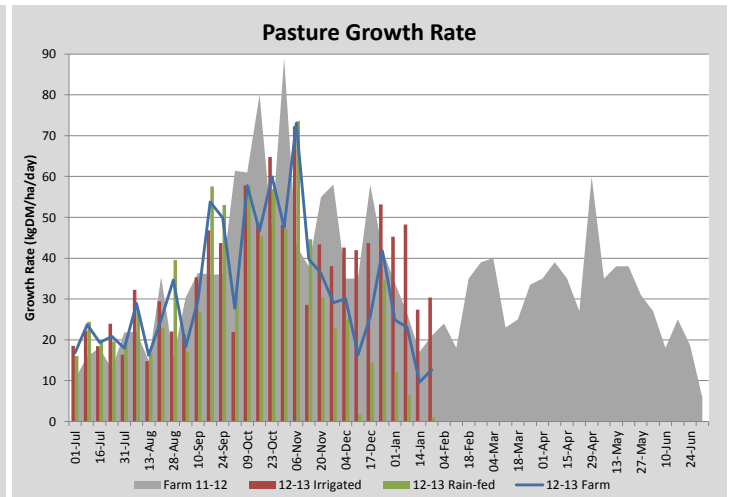
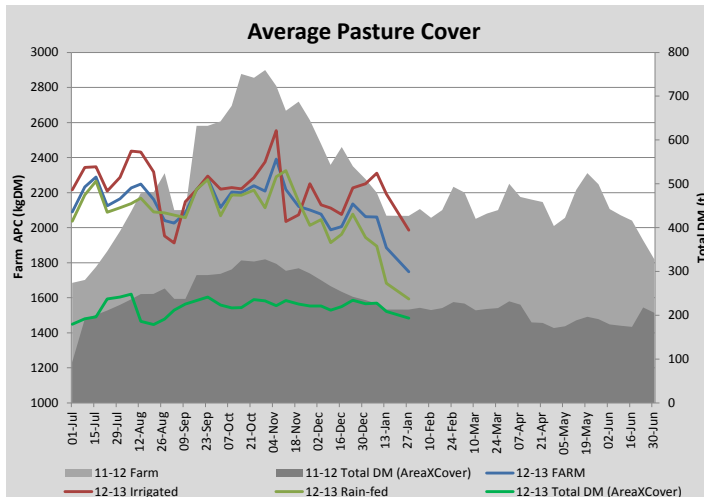
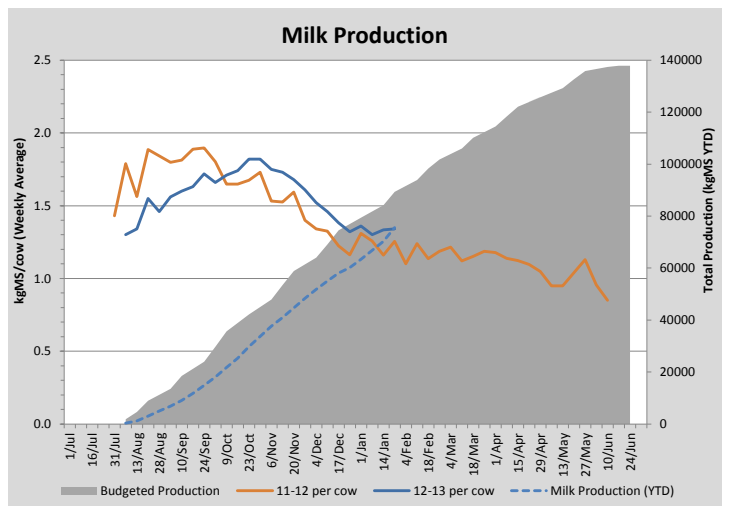
## Key Summary Points

- 1 Zero (or negative) growth on rain-fed and low growth on irrigated pastures (due to irrigation stoppages) over the past fortnight has seen average covers drop considerably. The cow response indicates there is more available feed on the rain-fed paddocks than the c-dax pasture meter is currently reading meaning there is slightly more feed available than the wedge suggests.
- 2 Per cow milk production is holding, however we have dried off a further 20 low producing cows (which will be carried over until next year) and will dry off more in the next week.
- 3 Key focus this week is winter crop establishment and building covers on irrigated pastures.

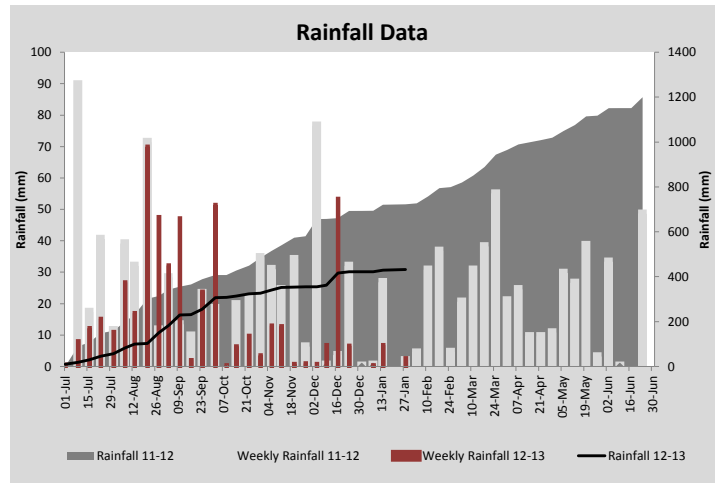
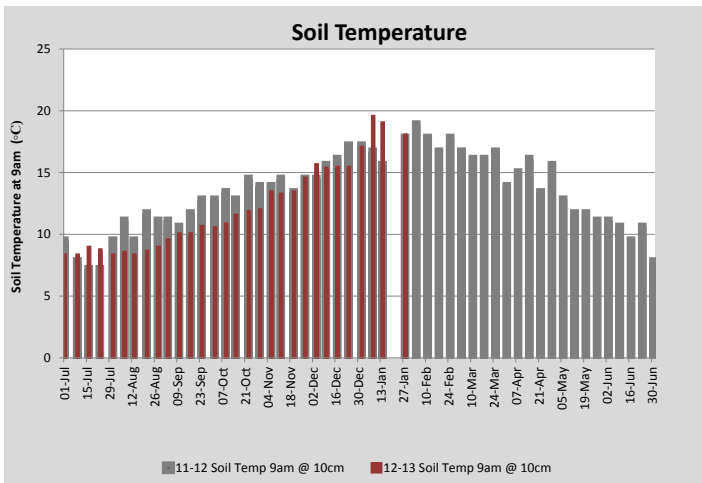
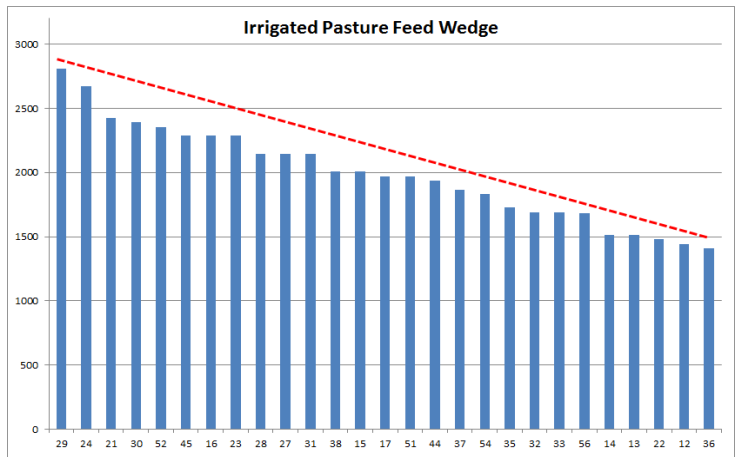
PASTURE INFORMATION	Farm			Irrigated			Rain-fed		
	Last Week	This Week	Variation	Last Week	This Week	Variation	Last Week	This Week	Variation
Grazed milking area (ha)	110.5	110.5	0.0	44.1	44.1	0.00	66.5	66.5	0.00
Rotation Length (days)	43	39		29	26		60	60	
Grazing allocation per day (ha)	2.6	2.8	0.20	1.5	1.7	0.20	1.1	1.1	0.00
Average time since last grazed (days)	47	48	1	28	26	2	59	62	3
Leaf appearance rate (days per leaf)	16	4	-12	9	10	1	20	#N/A	#N/A
Average Pasture Cover (kgDM/ha)	1885	1749	-136	2192	1985	-207	1682	1593	-89
Pasture Growth Rate (kgDM/ha/day)	10	13	3	27	30	3	0	1	1
Post Grazing Biomass (kgDM/ha)	1500	1450	50						
Nitrogen applied YTD (kgN/ha)	180	187	7	0	7	7	0	0	0

\*Please note all pasture calculations detailed above are based on the current Grazed Milking Area

MILK PRODUCTION	Last Week	This Week	Variation
No cows in milk (vat)	314	296	18.00
Litres per cow	18.4	17.9	0.53
% Fat	4.17	4.37	0.20
% Protein	3.08	3.14	0.06
MS/cow/day	1.33	1.34	0.01
MS/ha/day	3.57	3.66	0.09
BMCC	212	191	21.00
Average Liveweight (kg)			
	Budget	To Date	Variation
Total Milk Production (kgMS)	89349	75557	85%
MS/ha YTD	798	675	-123



Last 7 days					
Milkers Diet	kg DM	ME	CP	NDF	\$/cow
Pasture Intake	8.0	10.5	0.0	0.0	0.0
Concentrates	5.0	11.0	0.0	0.0	0.0
Silage	5.0	10.0	0.0	0.0	0.0
Grazed forage	0.0	0.0	0.0	0.0	0.0
Other feeds	0.0	0.0	0.0	0.0	0.0
<b>Total</b>	<b>18</b>	<b>189</b>	<b>0</b>	<b>0</b>	<b>0</b>
<b>Target</b>	<b>18</b>		<b>0</b>	<b>0</b>	<b>0</b>



Analysis			
Expected growth rate next 7 days (kgDM/ha/day)	15	Target Leaf Grazing Stage	3.0
Total Demand from Pasture (kgDM/ha/day)	20	Predicted APC 7 days time	1714
APC balance (kgDM/ha/day)	-5	Predicted APC Change	-34.7

## Discussion

Please note all data above is for a two week period. The herd has been pregnancy tested and our 6 week (AI) in calf rate sits at 74%. Will conduct a follow up test in 4 weeks time to determine empty rates. We will hold off on culling any additional cows until the empty rate has been determined but will dry off a further 20-30 low producing cows and/or lighter first year heifers to reduce feed demand and maximise profitability of feeding supplement. The main herd has now started to lose some weight (average condition score 4.6) and we will closely monitor individual cow weight/condition from this point forward. While we still have irrigation water in storage we have struggled to keep desired soil moisture levels under irrigation due to breakdowns/stoppages. It is hoped the forecast rains will help us catch up and improve growth rates over the coming weeks. To help maximise feed we will spend additional time on the rain-fed paddocks this week (1/40th of available area/day) in order to give our irrigated pastures that are actually growing time to catch up (grass grows grass). We currently have 82t of conserved silage remaining on farm. At current feeding rates this will get us through the summer but leave minimal reserves for winter. We have just sown 10.5ha of Gruner Kale (giant Kale variety) on the runoff block which will be used as winter feed (approx 100t of potential utilisable feed) to help see us through. Additional supplement purchase/off farm grazing of some stock may also be required.

# 28 January 2013

