

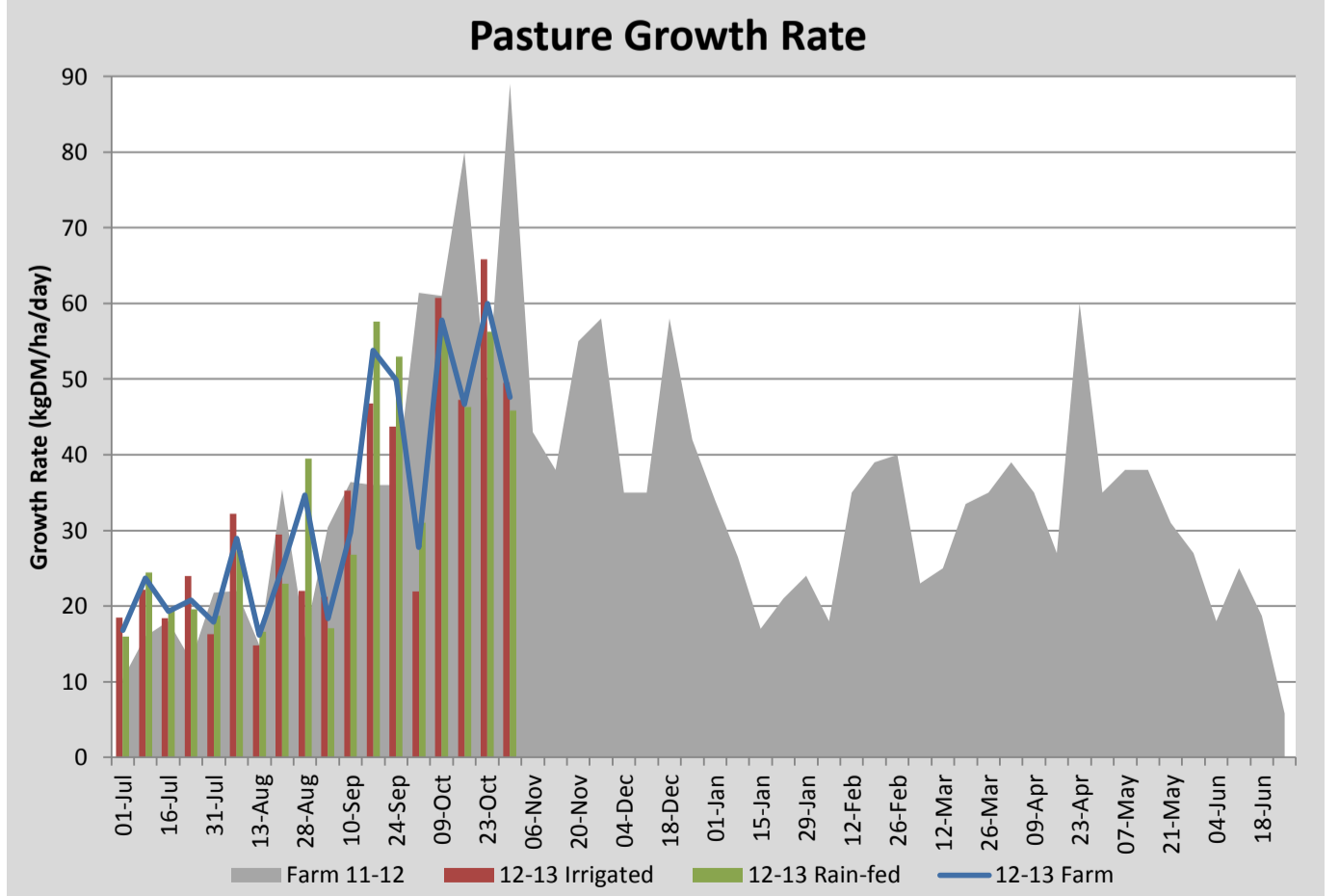
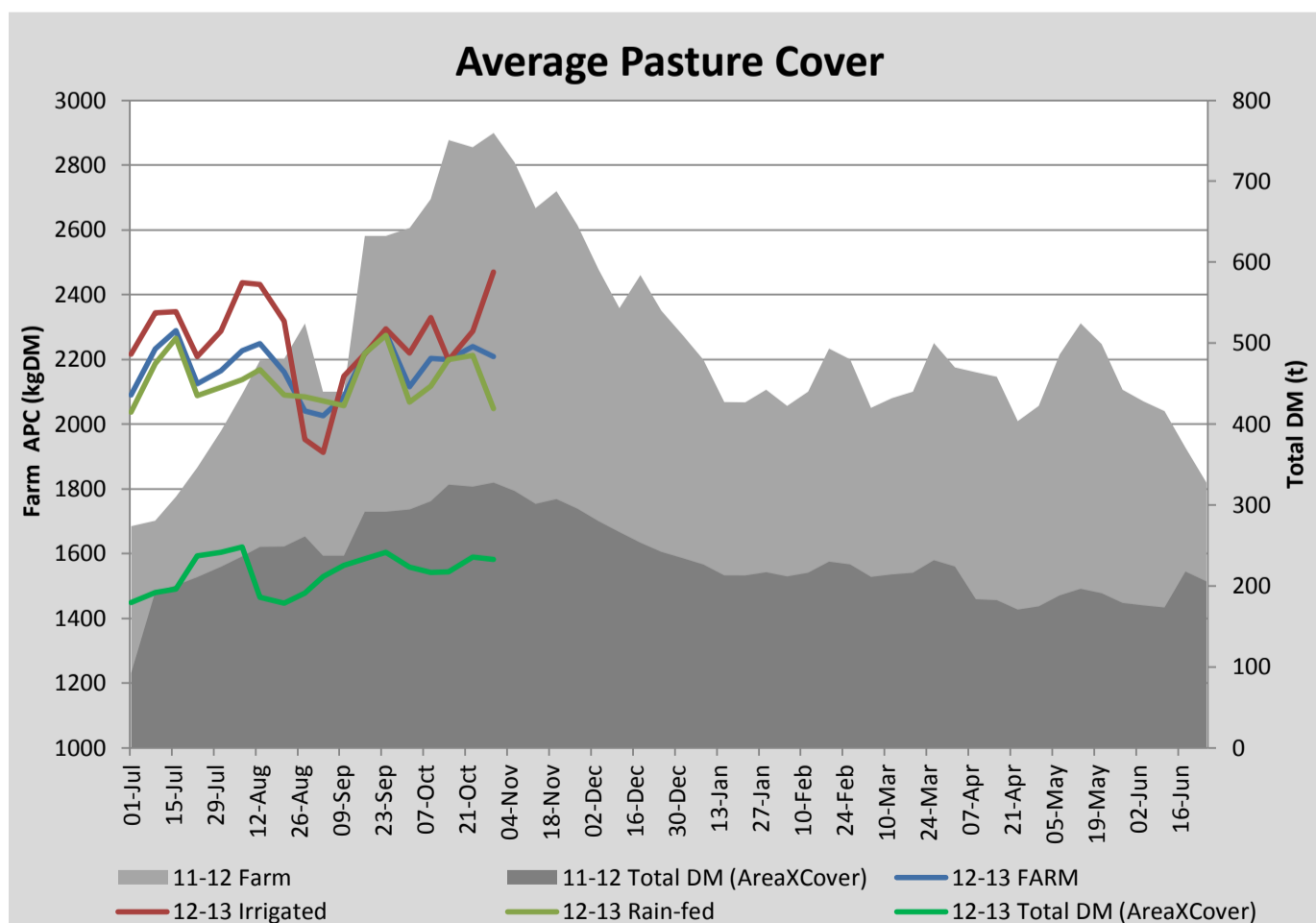
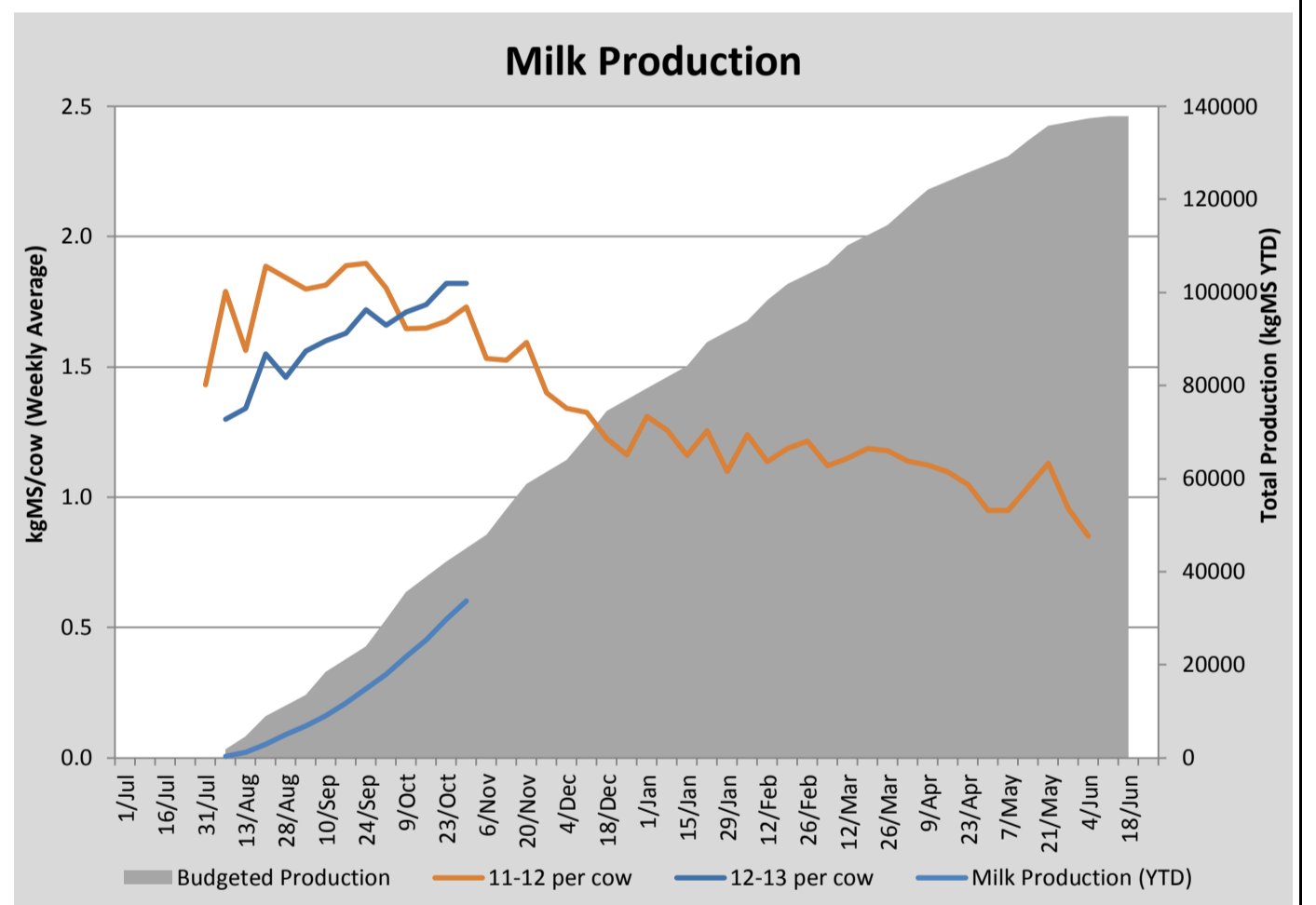
Key Summary Points

- 1 Average covers have stayed steady the past 7 days with growth rates less than expected
- 2 Cow production is holding well and pasture quality is still very good
- 3 Mating has started well

PASTURE INFORMATION	Farm			Irrigated			Rain-fed		
	Last Week	This Week	Variation	Last Week	This Week	Variation	Last Week	This Week	Variation
Grazed milking area (ha)	105.4	105.4	0.0	65.1	65.1	0.00	40.3	40.3	0.00
Rotation Length (days)	28	30		21	22		34	38	
Grazing allocation per day (ha)	3.8	3.5	0.30	1.9	1.8	0.10	1.9	1.7	0.20
Average time since last grazed (days)	27	27	0	27	27	0	27	27	0
Leaf appearance rate (days per leaf)	10	10	0	10	10	0	10	10	0
Average Pasture Cover (kgDM/ha)	2240	2209	-31	2286	2469	183	2211	2048	-163
Pasture Growth Rate (kgDM/ha/day)	60	48	-12	66	50	-16	56	46	-10
Post Grazing Biomass (kgDM/ha)	1580	1580	0						
Nitrogen applied YTD (kgN/ha)	79	105	26	0	15	15	0	10	10

*Please note all pasture calculations detailed above are based on the current Grazed Milking Area

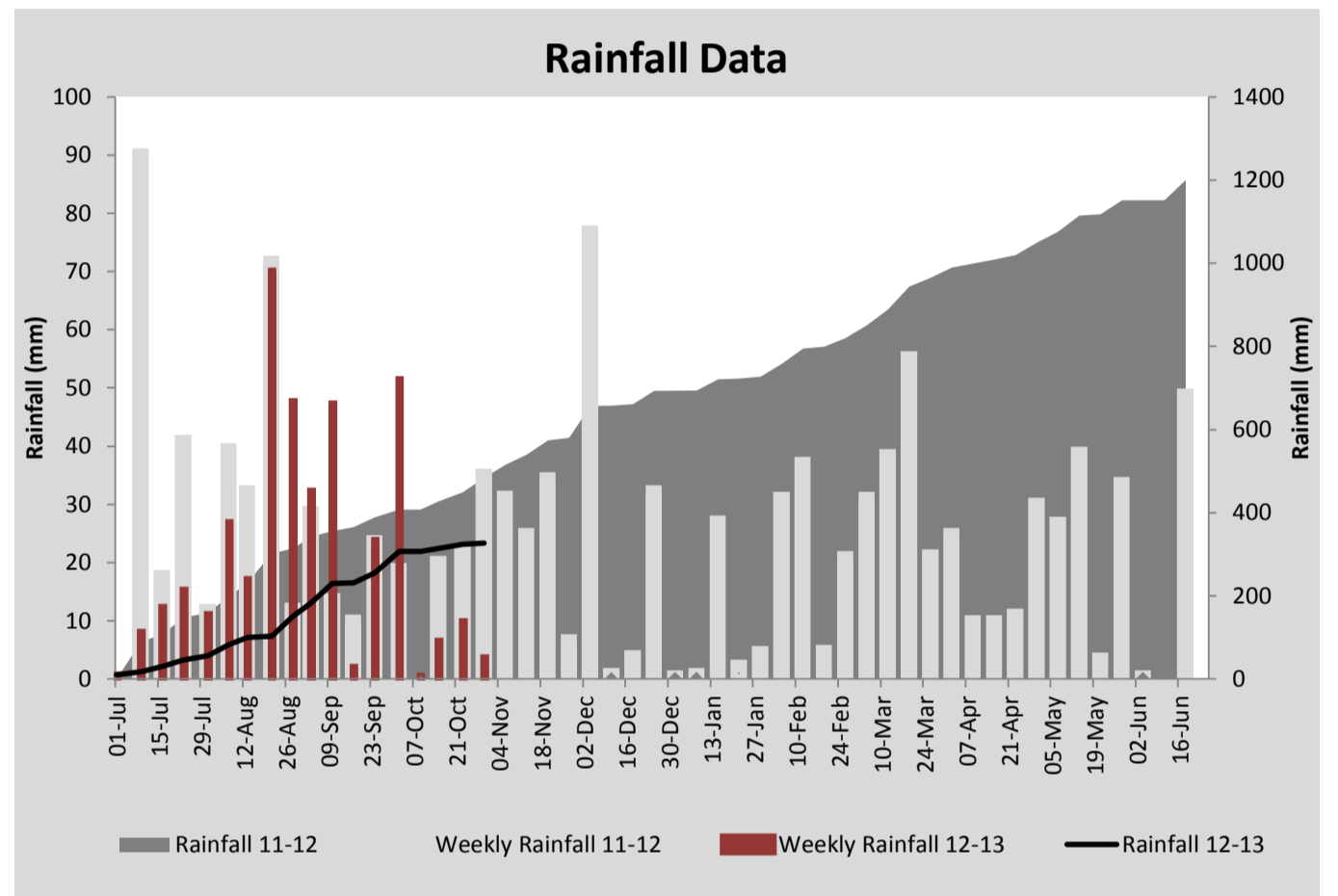
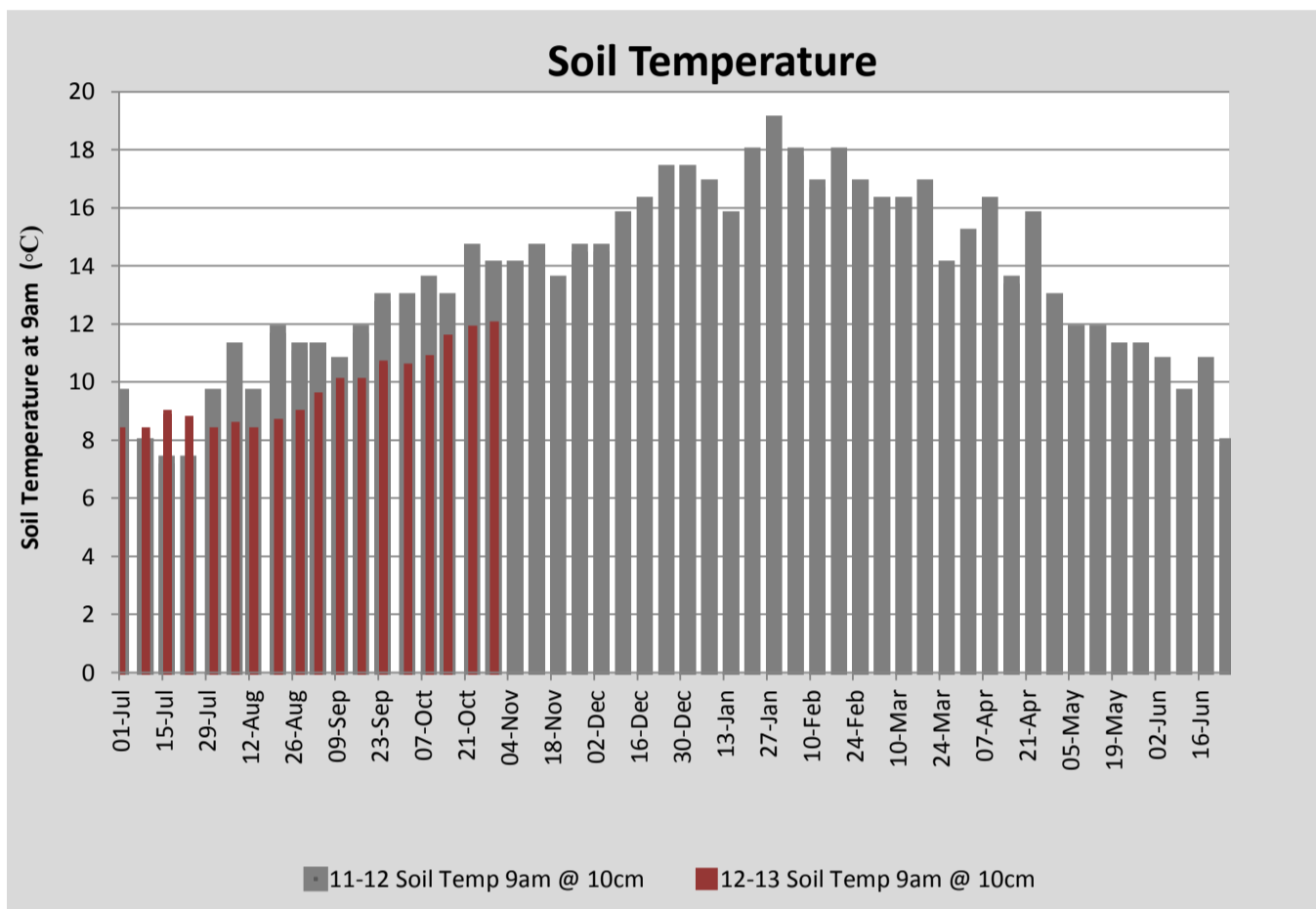
MILK PRODUCTION	Last Week	This Week	Variation
No cows in milk (vat)	318	318	0.00
Litres per cow	25.6	25.3	0.27
% Fat	3.95	4.08	0.13
% Protein	3.15	3.13	0.02
MS/cow/day	1.82	1.82	0.00
MS/ha/day	4.92	4.94	0.02
BMCC	183	190	7.00
Average Liveweight (kg)			
	Budget	To Date	Variation
Total Milk Production (kgMS)	45025	33726.00	75%
MS/ha YTD	402	301	-101



Milkers Diet	kg DM	ME	CP	NDF	\$/cow
Pasture Intake	14.3	12.5	0.0	0.0	0.0
Concentrates	3.8	12.0	0.0	0.0	0.0
Silage	0.0	0.0	0.0	0.0	0.0
Grazed forage	0.0	0.0	0.0	0.0	0.0
Other feeds	0.0	0.0	0.0	0.0	0.0
Total	18	223.1	0	0	0
Target	18		0	0	0



Centre pivot in operation



Analysis			
Expected growth rate next 7 days (kgDM/ha/day)	65	Target Leaf Grazing Stage	2.2
Total Demand from Pasture (kgDM/ha/day)	45	Predicted APC 7 days time	2347
APC balance (kgDM/ha/day)	20	Predicted APC Change	138.0

Discussion

Pasture growth rates have been close to demand the past 7 days meaning our average cover has held steady. We have irrigated part of the area under the pivot this week and had the first run under the fixed irrigation. We have skipped one additional paddock for silage (because covers exceeded 3100kgDM/ha) and have 20ha on the run-off which will be ready for cutting in the next week to 10 days. 27% of the herd has been mated in the first 7 days and a PG shot has been just administered to all other cows who have been calved for at least 4 weeks. The combination of the 'scratchy' heat detection aids and the auto-drafting system is making identification and drafting of cows for mating a very simple task and helps to keep the shed to a one person operation. Fixed time AI of our 100 yearlings was also completed this week and the synchronisation program appeared to work very well. Milk production has held above 1.8kgMS/cow/day for the past week. Our grazing plan has us using 1/27th of the available area per day for the next week (27 day rotation). This is slightly longer than leaf emergence/growth rate data indicates our target should be (23-25 days). Because of this will closely monitor pre-grazing covers on the milking platform and skip any additional paddocks where covers get too long (>3100kgDM/ha).

30 October 2012

