

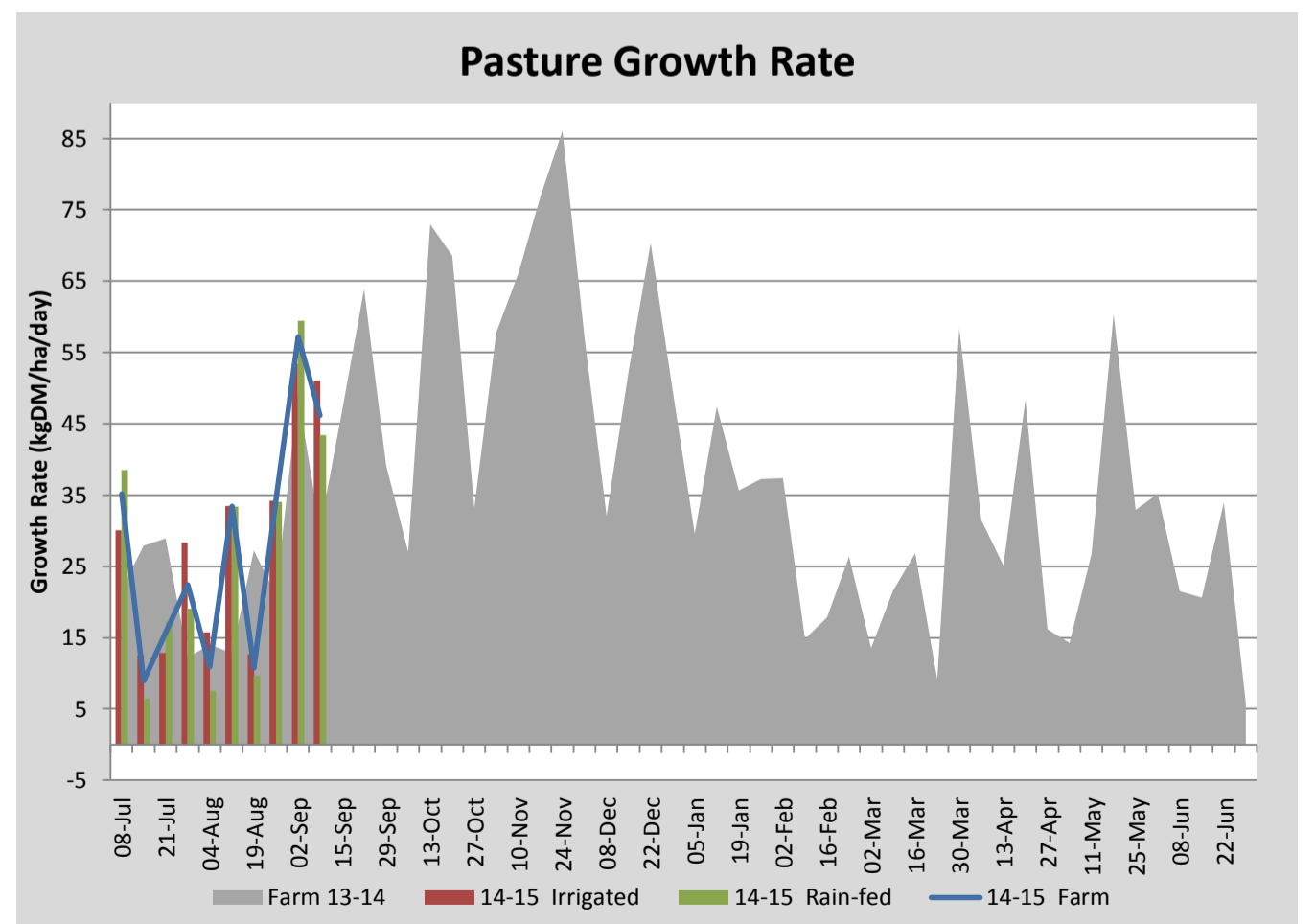
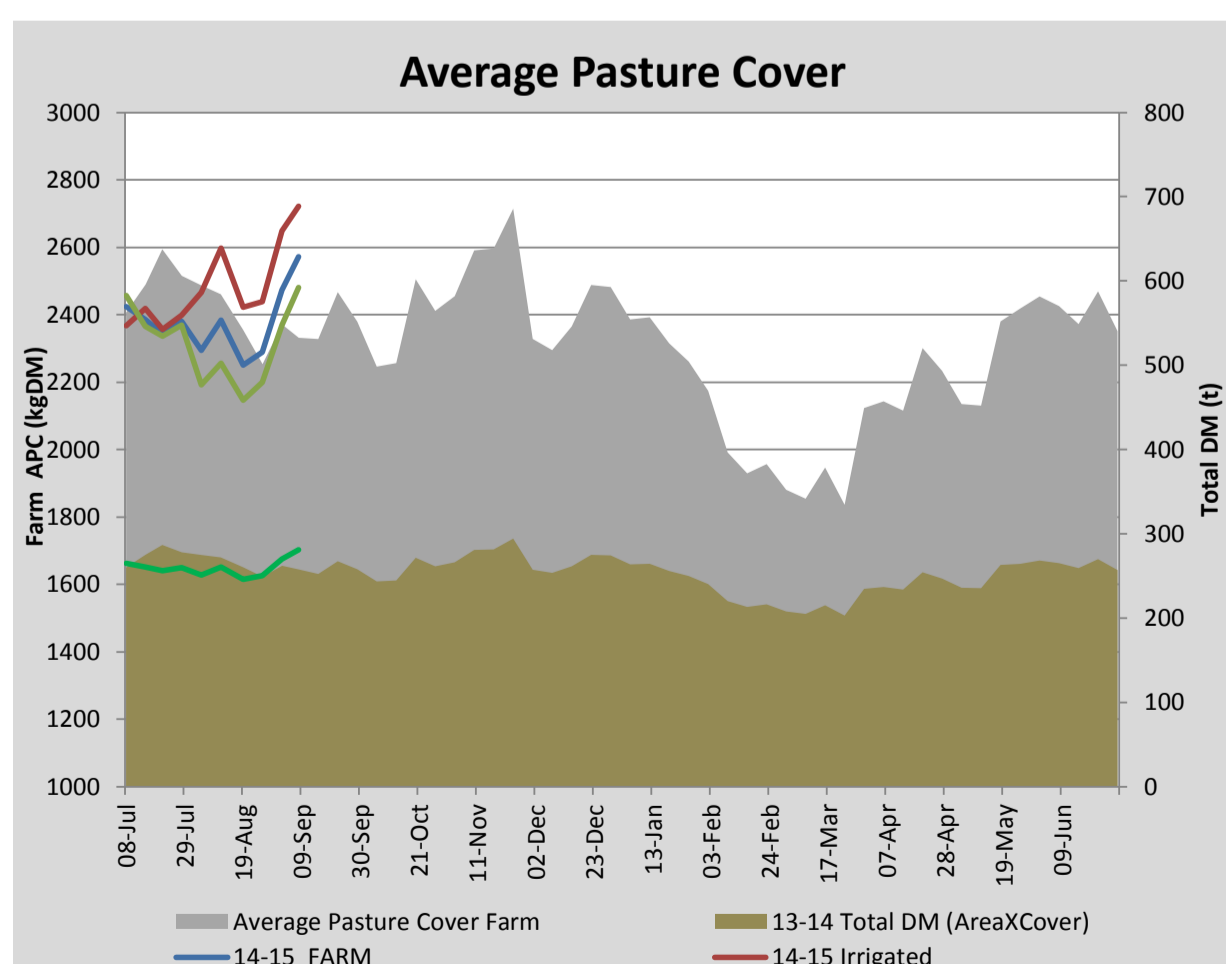
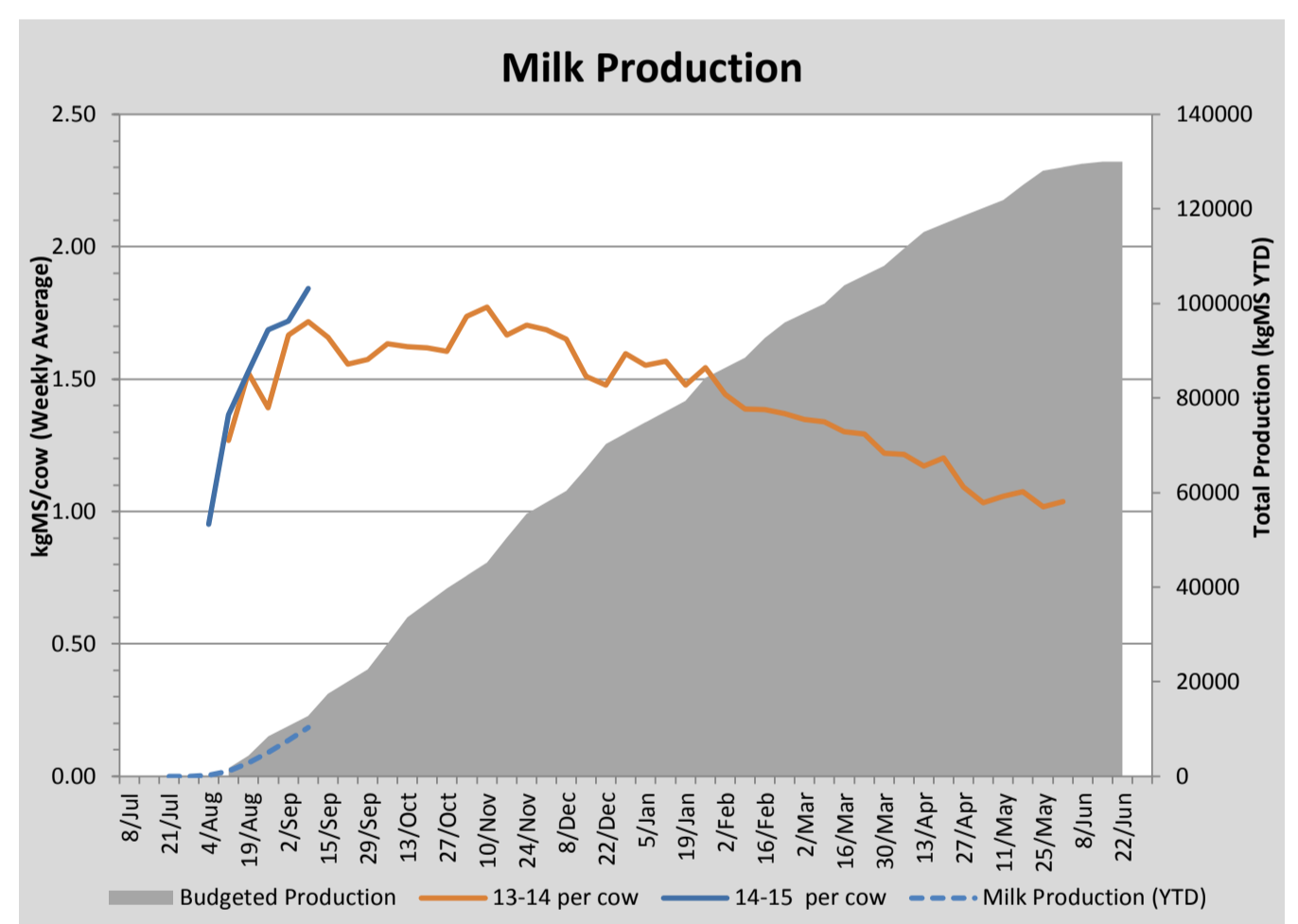
Key Summary Points

- 1 Average pasture cover continued to build this week to 2571kgDM/ha, influenced mainly by growth on the MMFF trial paddocks. Average pasture cover of the available portion of the milking platform held at 2428kgDM/ha (2407 last week).
- 2 Per cow milksoild production continued to increase this week to 1.84kgMS/cow/day.
- 3 Key focus for this coming week is to return all remaining dry cows to the milking platform to manage residuals behind the milkers and to ensure that the remaining lead feed in the silo is consumed prior to the commencement of the next feeding study.

PASTURE INFORMATION	Farm			Irrigated			Rain-fed		
	Last Week	This Week	Variation	Last Week	This Week	Variation	Last Week	This Week	Variation
Grazed milking area (ha)	109.3	109.3	0.0	41.0	41.0	0.0	68.3	68.3	0
Rotation Length (days)	55	61	6	103	32	-71	43	137	94
Grazing allocation per day (ha)	2.0	1.8	-0.2	0.4	1.3	0.9	1.6	0.5	-1.1
Average time since last grazed (days)	69	89	21	60	93	33	74	87	13
Leaf appearance rate (days per leaf)	15	15	0	15	15	0	15	15	0
Average Pasture Cover (kgDM/ha)	2474	2571	98	2648	2722	73	2369	2481	112
Pasture Growth Rate (kgDM/ha/day)	57	46	-11	53	51	-2	59	43	-16
Post Grazing Biomass (kgDM/ha)	1578	1668	90						
Nitrogen applied YTD (kgN/ha)	37	37	0	3	0	-3	9	0	-9

*Please note all pasture calculations detailed above are based on the current Grazed Milking Area

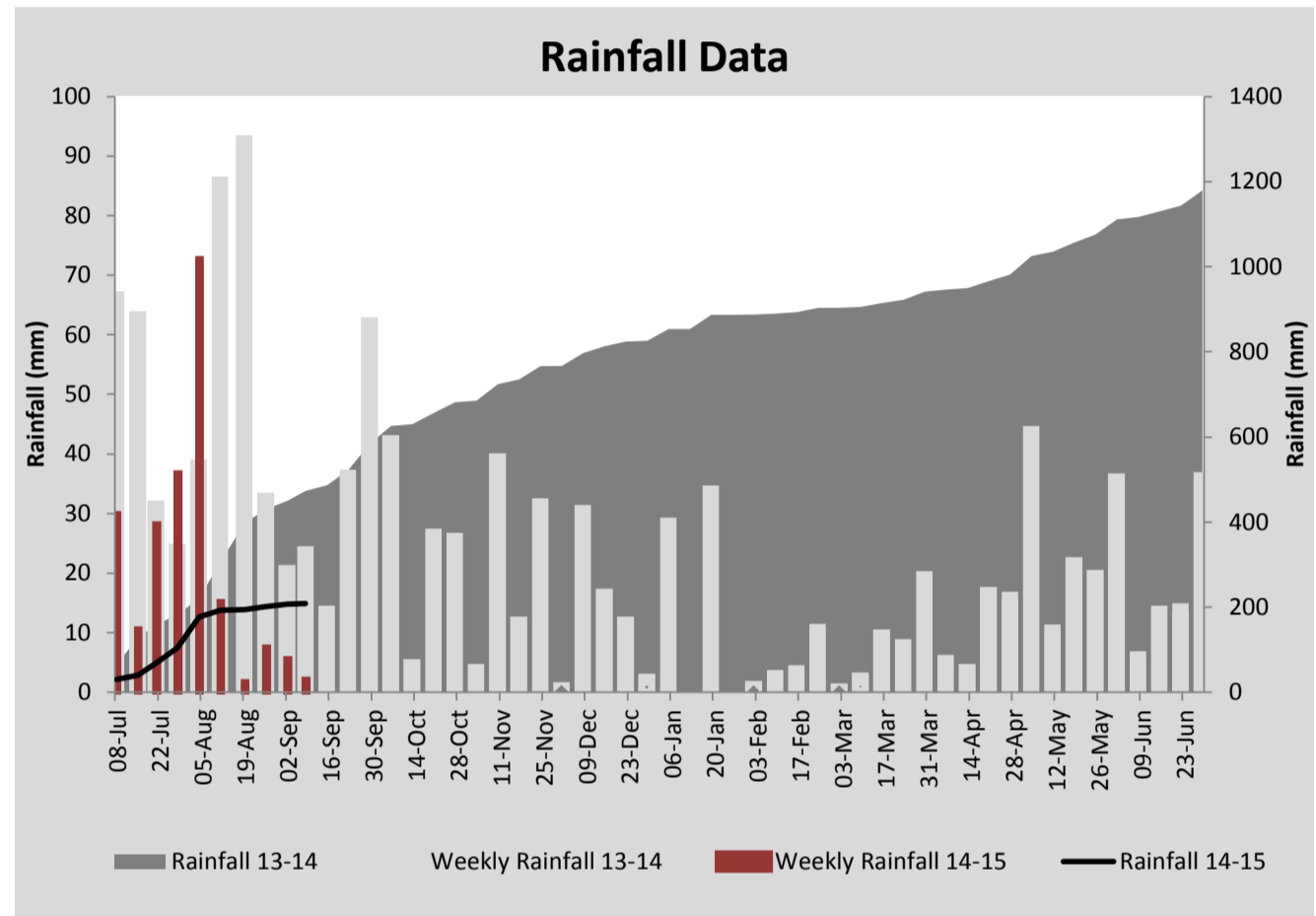
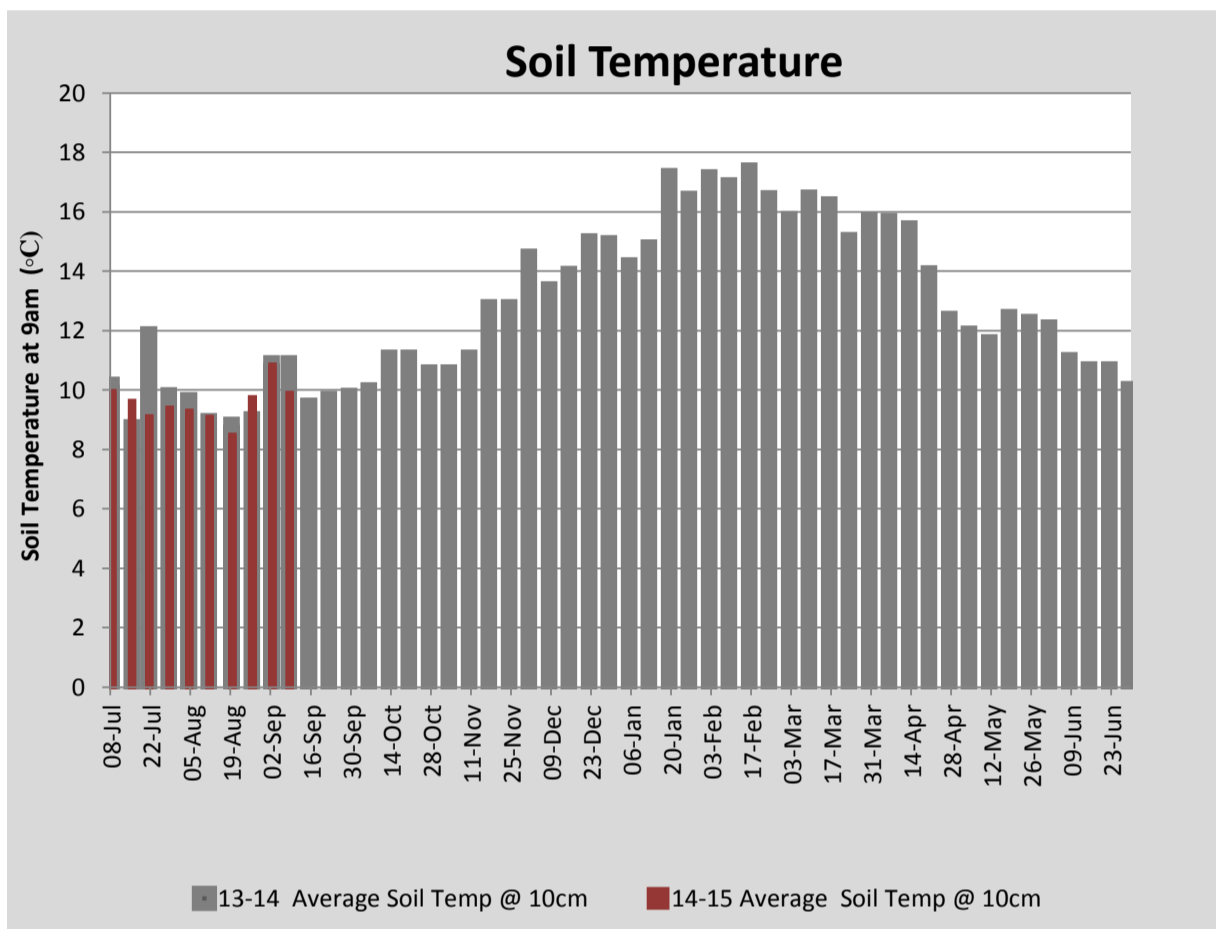
MILK PRODUCTION	Last Week	This Week	Variation
Average No. cows in milk (vat)	241	264	22
Litres per cow	22.9	24.3	1.4
% Fat	4.41	4.50	0.09
% Protein	3.10	3.10	0.00
MS/cow/day	1.72	1.84	0.12
MS/ha/day	3.67	4.30	0.62
BMCC	109	76	
Average Liveweight (kg)	485	485	
	Budget	To Date	Variation
Total Milk Production (kgMS)	12,746	10,318	81%
MS/ha YTD	114	93	-21



Last 7 days					
Milkers Diet	kg DM	MJ ME	CP (%)	NDF (%)	\$/cow
Pasture Intake	11.4	12.5	28.0	40.7	0.0
Concentrates	5.0	12.3	12.3	16.5	0.0
Silage	1.6	10.5	15.0	49.0	0.0
Grazed forage	0.0	0.0	0.0	0.0	0.0
Other feeds	0.0	0.0	0.0	0.0	0.0
Total	18	220.8	22.5	34.7	0
Target		191	16-18	>33	0



Sensor attached to the calf milk wagon. A flashing light in the pit is activated when the wagon is filled to the correct level eliminating over or under filling. The volume can be adjusted by sliding the sensor up or down



Analysis			
Expected growth rate next 7 days (kgDM/ha/day)	45	Target Leaf Grazing Stage	3.0
Total Demand from Pasture (kgDM/ha/day)	45	Predicted APC 7 days time	2569
APC balance (kgDM/ha/day)	-0	Predicted APC Change	-2.8

Discussion

Average pasture cover increased this week to 2571kgDM/ha. We were able to hold cover at 2428kgDM/ha on paddocks available for grazing outside of the More Milk From Forages (MMFF) study paddocks. With reasonable weather forecast, we hope to return all remaining dry cows to the milking platform to manage residuals behind the milkers and consume remaining lead feed pellets. Per cow milk solid production is exceeding the peak of last year, currently sitting at 1.84kgMS/ha. BMCC dropped to 76,000/ml this week. We have achieved this through weekly stripping of the whole herd and daily stripping of the colostrum cows. Calf rearing is progressing well with no major disease issues so far. We are currently rearing 127 heifers with two mobs (86 total) out of the shed and on pasture.

8 September 2014

