

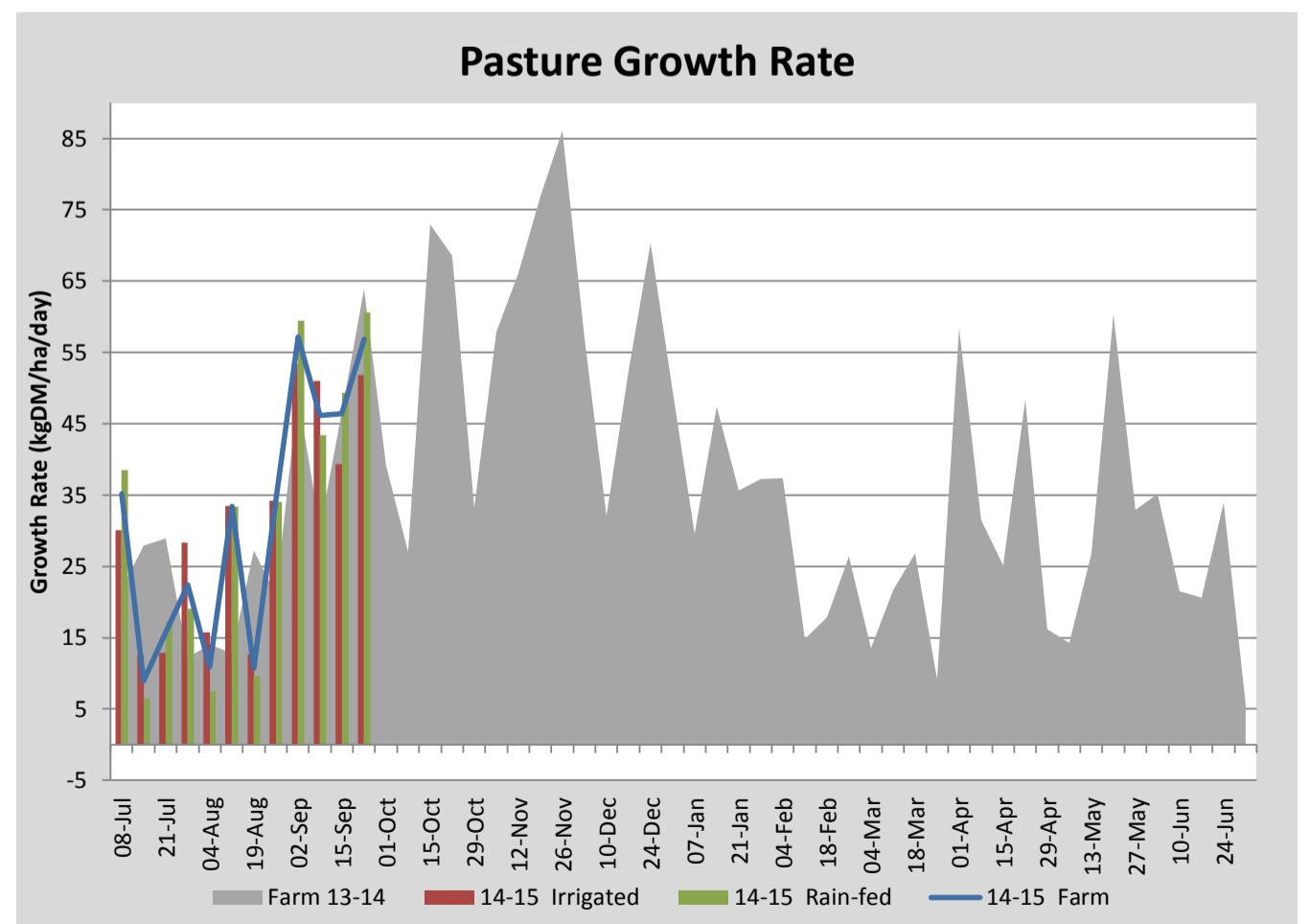
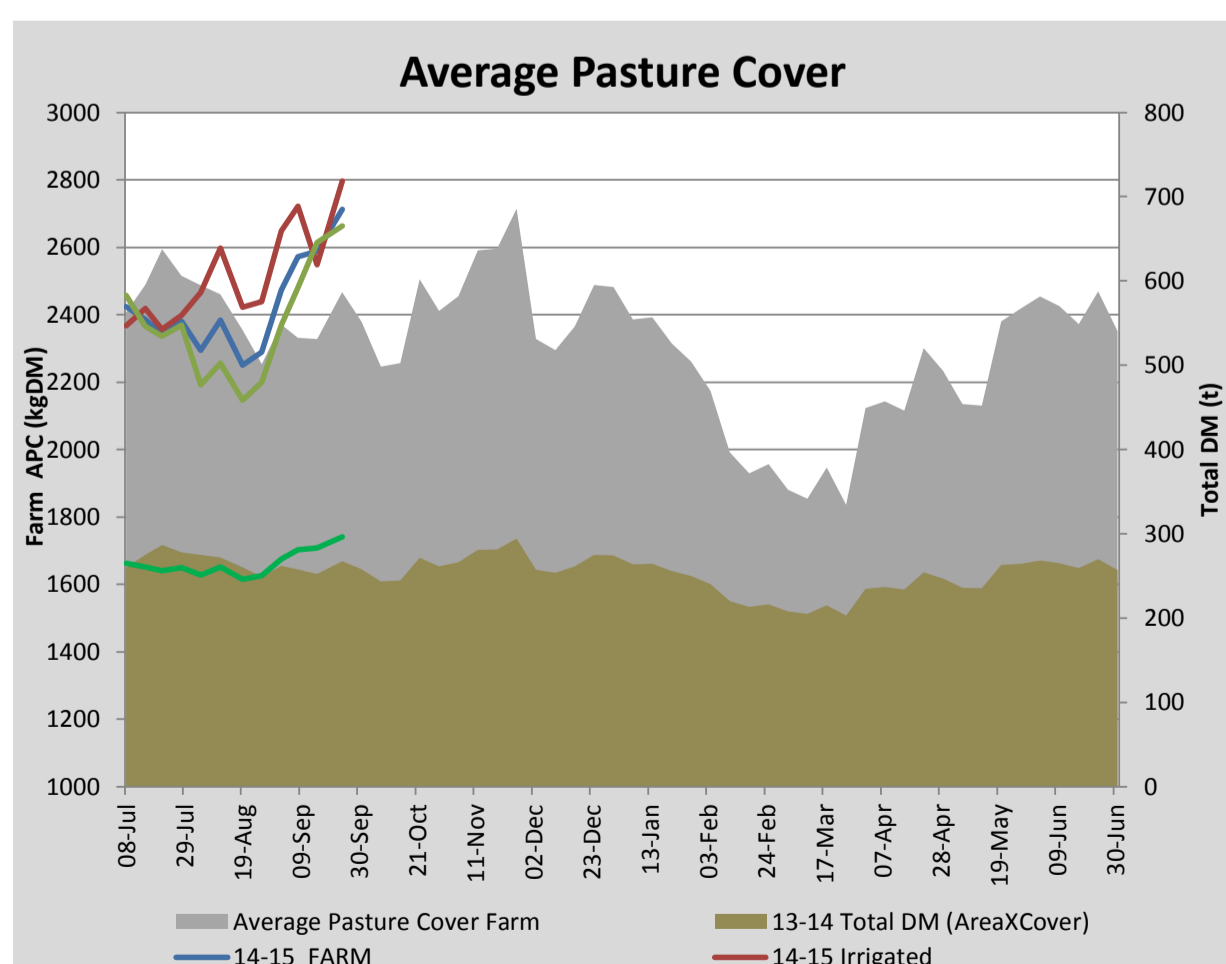
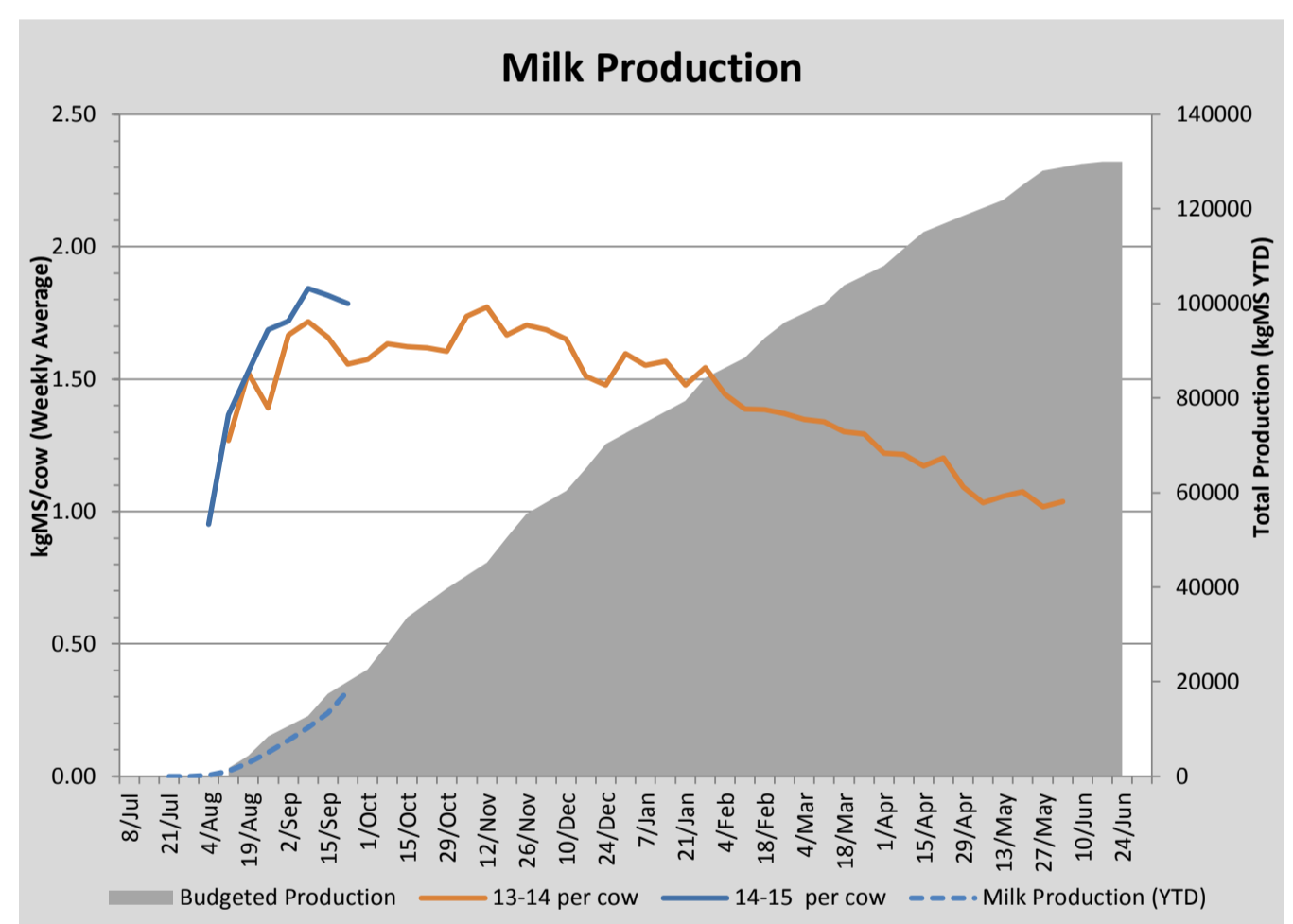
Key Summary Points

- 1 Average pasture cover continued to build this week to 2713kgDM/ha.
- 2 Grazing of the More Milk From Forages trial plots started this week. Residuals in these plots will be topped and grazed off with the main herd as these paddocks become available.
- 3 Key focus for this coming week is to manage pasture quality by topping of trial paddocks. Paddocks with covers above 3100kgDM/ha will be cut for silage as soon as the weather permits.

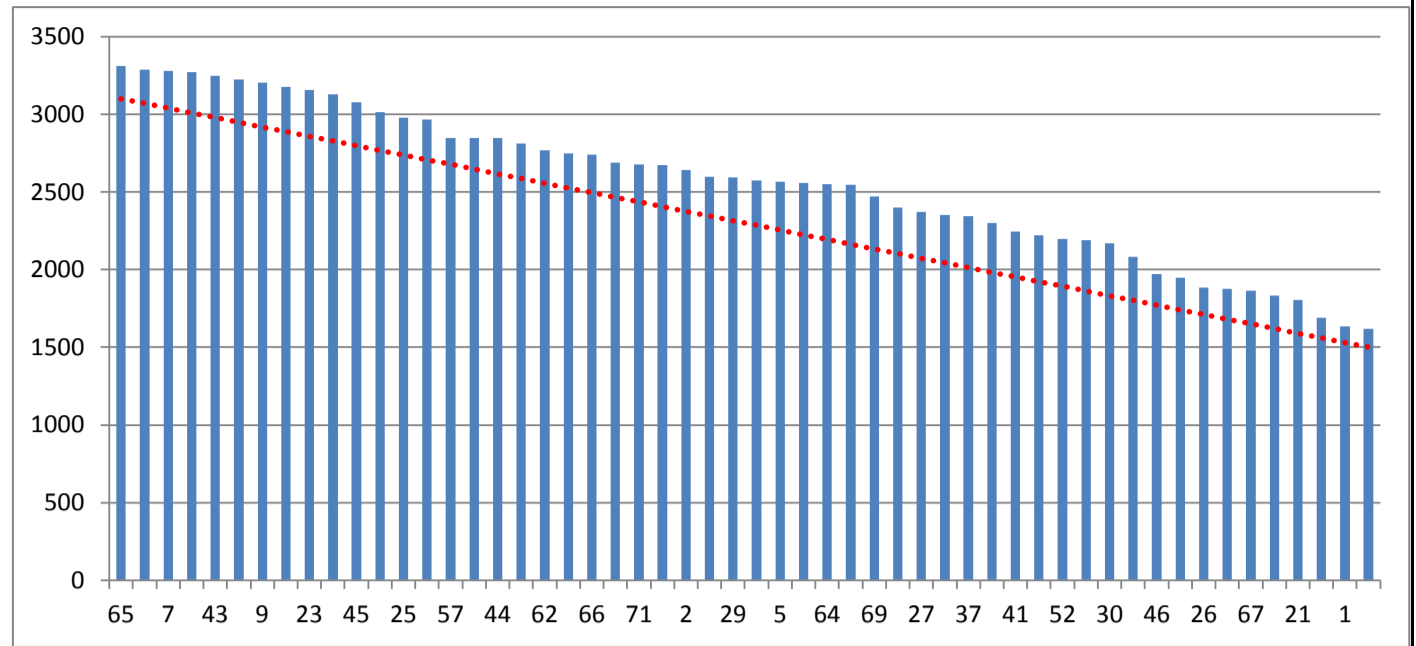
PASTURE INFORMATION	Farm			Irrigated			Rain-fed		
	Last Week	This Week	Variation	Last Week	This Week	Variation	Last Week	This Week	Variation
Grazed milking area (ha)	109.3	109.3	0.0	41.0	41.0	0.0	68.3	68.3	0
Rotation Length (days)	46	50	4	32	37	6	62	62	0
Grazing allocation per day (ha)	2.4	2.2	-0.2	1.3	1.1	-0.2	1.1	1.1	0.0
Average time since last grazed (days)	61	50	-11	47	43	-4	70	54	-16
Leaf appearance rate (days per leaf)	15	15	0	15	15	0	15	15	0
Average Pasture Cover (kgDM/ha)	2589	2713	124	2548	2796	248	2613	2663	50
Pasture Growth Rate (kgDM/ha/day)	46	57	10	39	52	13	49	61	11
Post Grazing Biomass (kgDM/ha)	1488	1739	251						
Nitrogen applied YTD (kgN/ha)	47	47	0	9	0	-9	11	0	-11

*Please note all pasture calculations detailed above are based on the current Grazed Milking Area

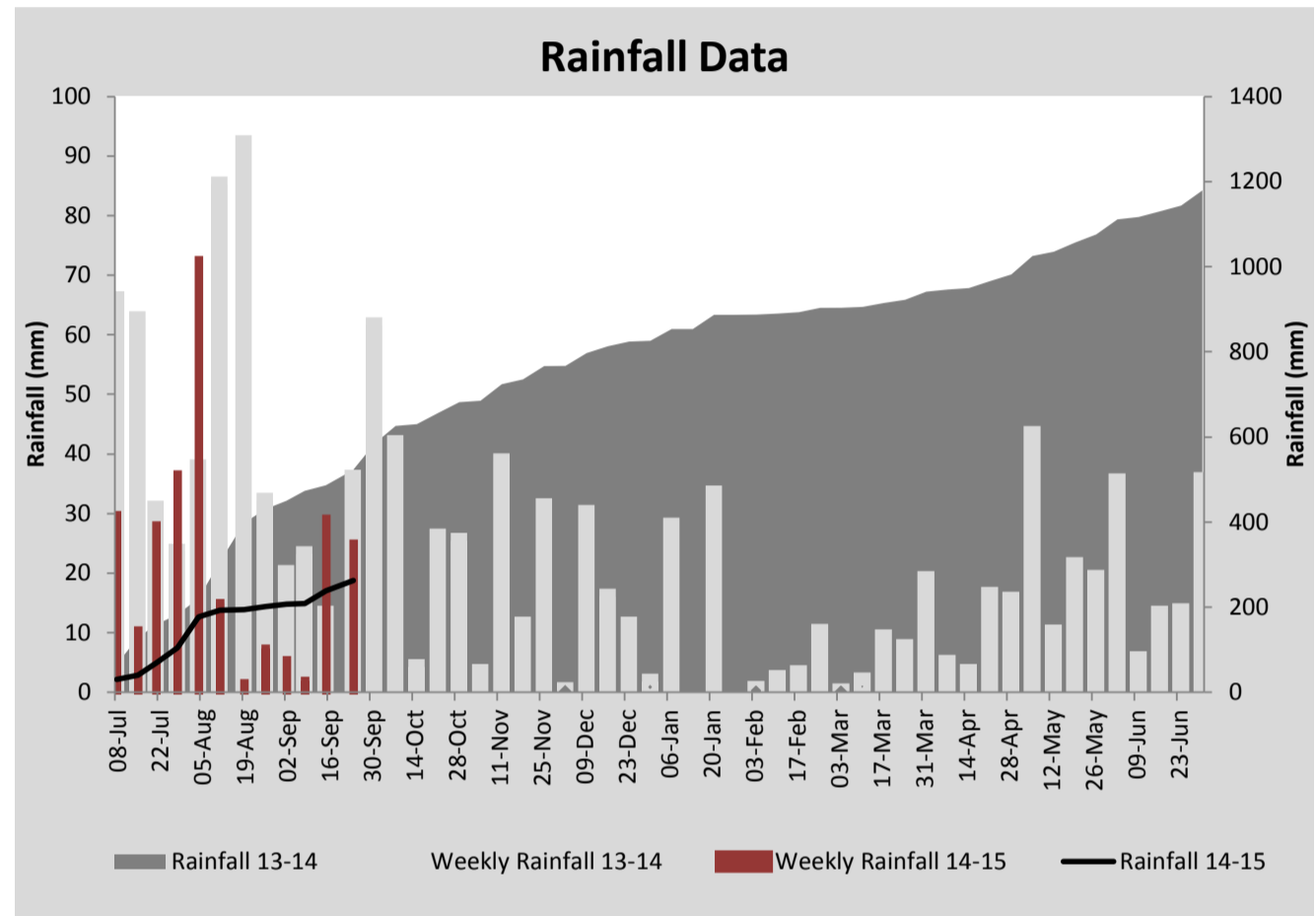
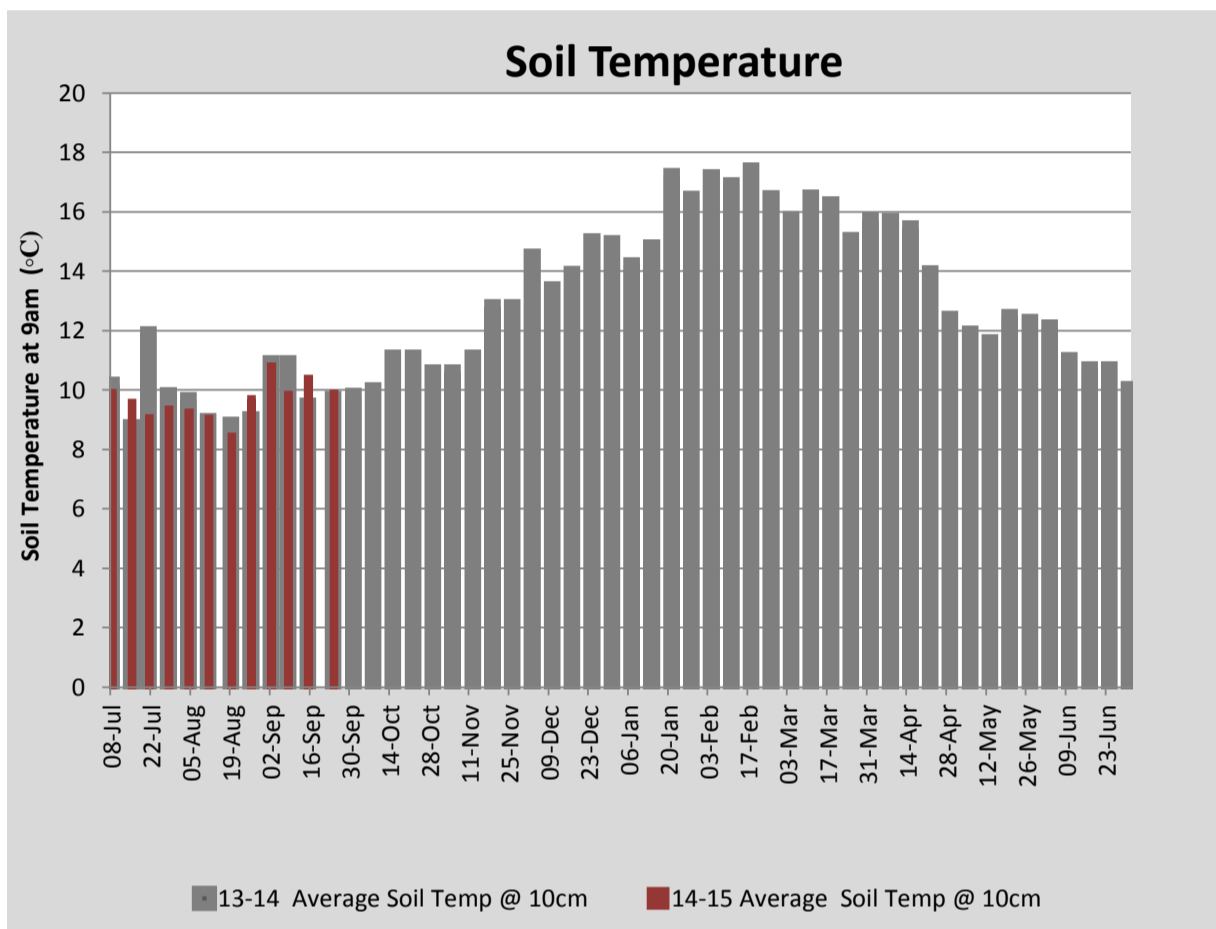
MILK PRODUCTION	Last Week	This Week	Variation
Average No. cows in milk (vat)	283	309	27
Litres per cow	25.2	24.7	-0.4
% Fat	4.19	4.07	-0.11
% Protein	3.14	3.16	0.02
MS/cow/day	1.82	1.78	-0.03
MS/ha/day	4.54	4.89	0.34
BMCC	108	118	
Average Liveweight (kg)	486	486	
	Budget	To Date	Variation
Total Milk Production (kgMS)	20,018	18,024	90%
MS/ha YTD	179	171	-7



Last 7 days					
Milkers Diet	kg DM	MJ ME	CP (%)	NDF (%)	\$/cow
Pasture Intake	13.2	13.2	25.0	41.7	0.0
Concentrates	5.0	12.3	12.3	16.5	0.0
Silage	0.8	10.5	15.0	49.0	0.0
Grazed forage	0.0	0.0	0.0	0.0	0.0
Other feeds	0.0	0.0	0.0	0.0	0.0
Total	19	244.2	21.3	35.4	0
Target		191	16-18	>33	0



Available feed wedge (area outside of the More Milk From Forages trial). Average pasture cover: 2556kgDM/ha



Analysis			
Expected growth rate next 7 days (kgDM/ha/day)	45	Target Leaf Grazing Stage	3.0
Total Demand from Pasture (kgDM/ha/day)	47	Predicted APC 7 days time	2701
APC balance (kgDM/ha/day)	-2	Predicted APC Change	-11.8

Discussion

Average pasture cover built this week to 2713kgDM/ha due to strong growth rates averaging 57kgDM/ha/day. Feed quality on our better pastures is holding well with the last feed test coming in at 13.2MJ ME/kg DM. With surplus cover developing in a number of paddocks this week we will try to manage feed quality over the coming fortnight by pre-graze topping and cutting silage, weather permitting. The current rotation is sitting at 40 days on the available portion of the platform. We will look to shorten this to 27days over the coming fortnight by dropping paddocks for silage, and increasing the per cow dry matter allocation to 20kg/cow/day. Per cow milksolid production dropped a little this week to 1.78kgMS/cow/day most likely due to cooler weather conditions. With increased dry matter allocation and better weather forecast we expect this to improve this coming week. R2 heifers are currently being fed ad-lib pasture and at last measurement (12/9) were gaining at 0.97kg/head/day.

24 September 2014

