

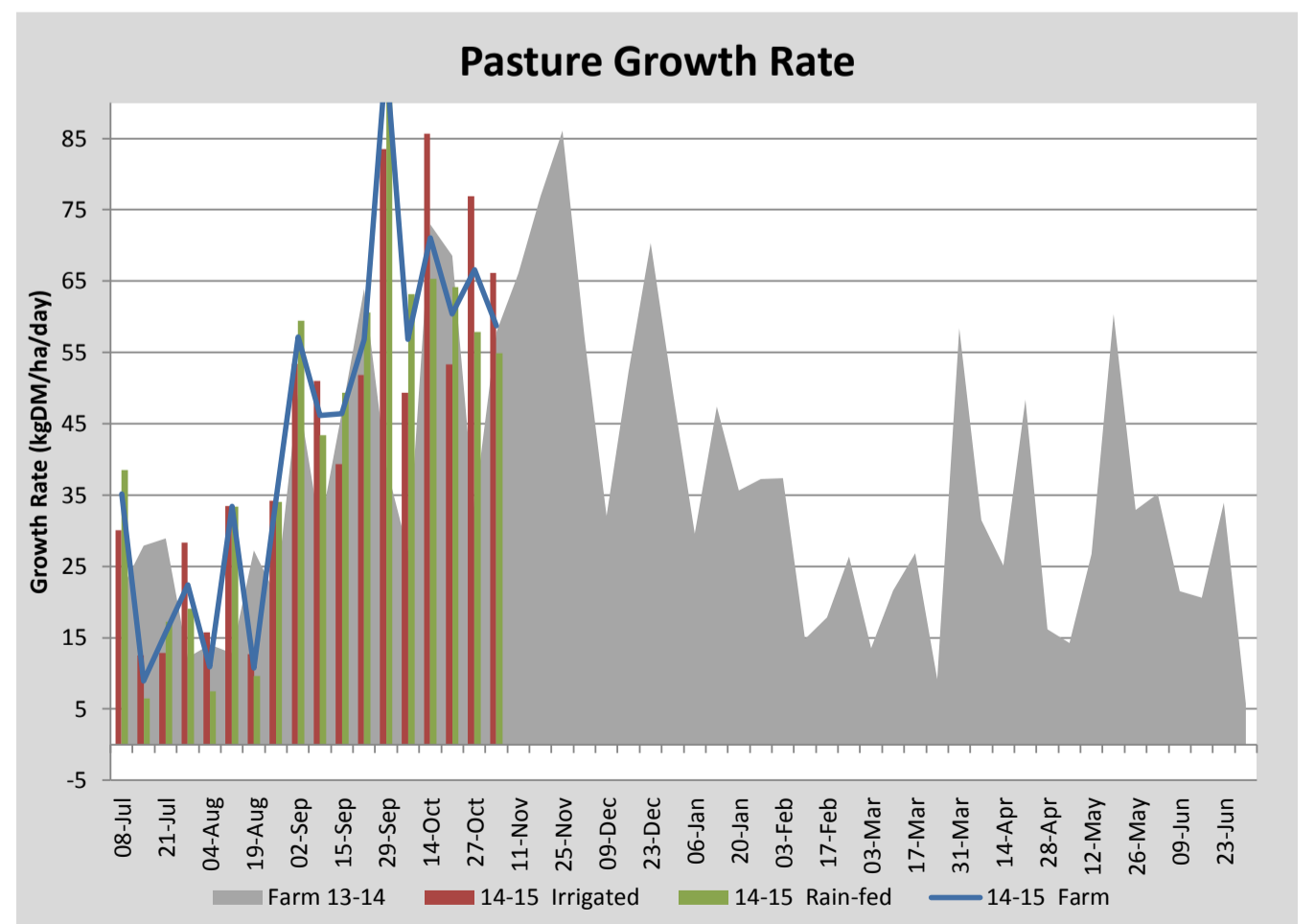
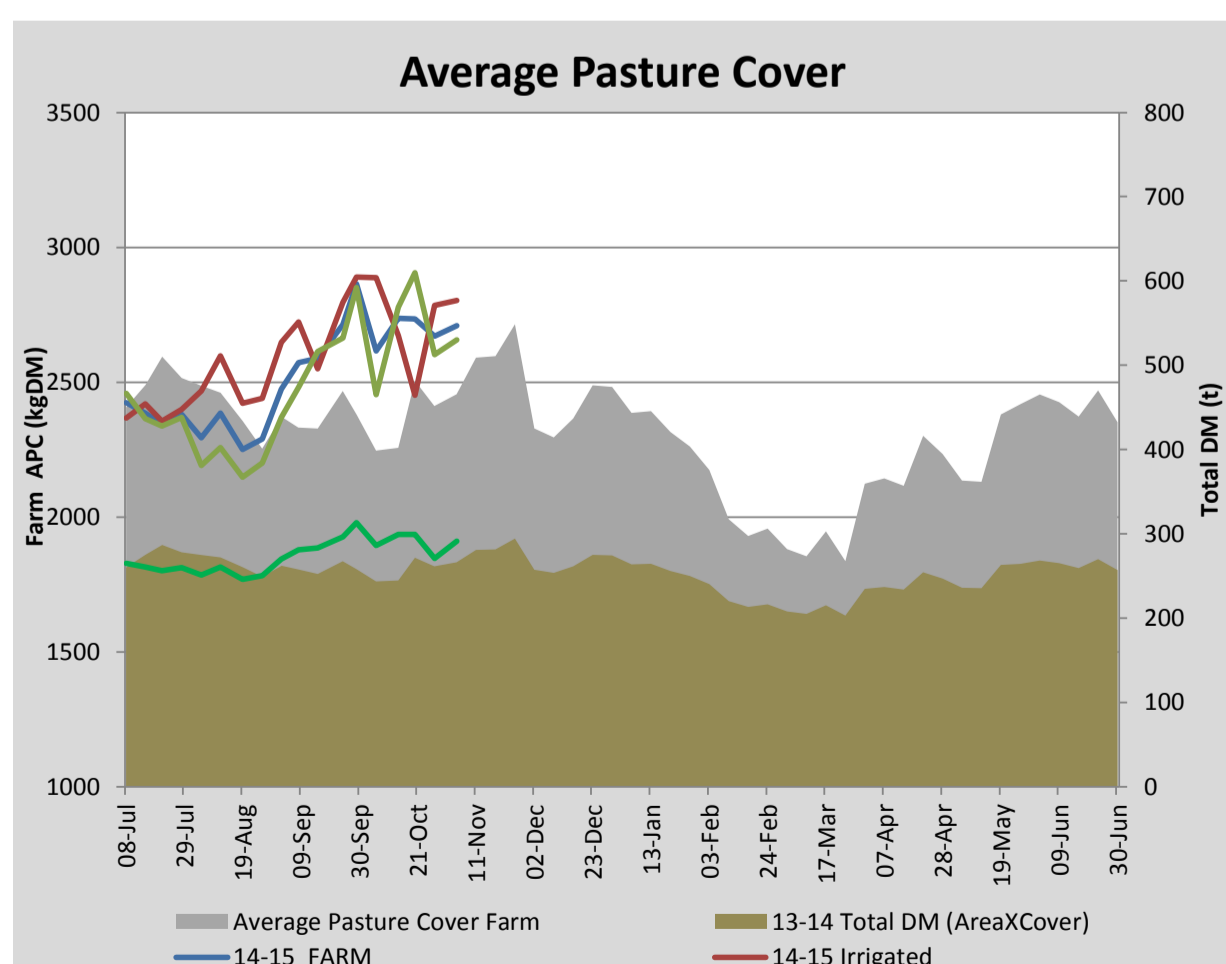
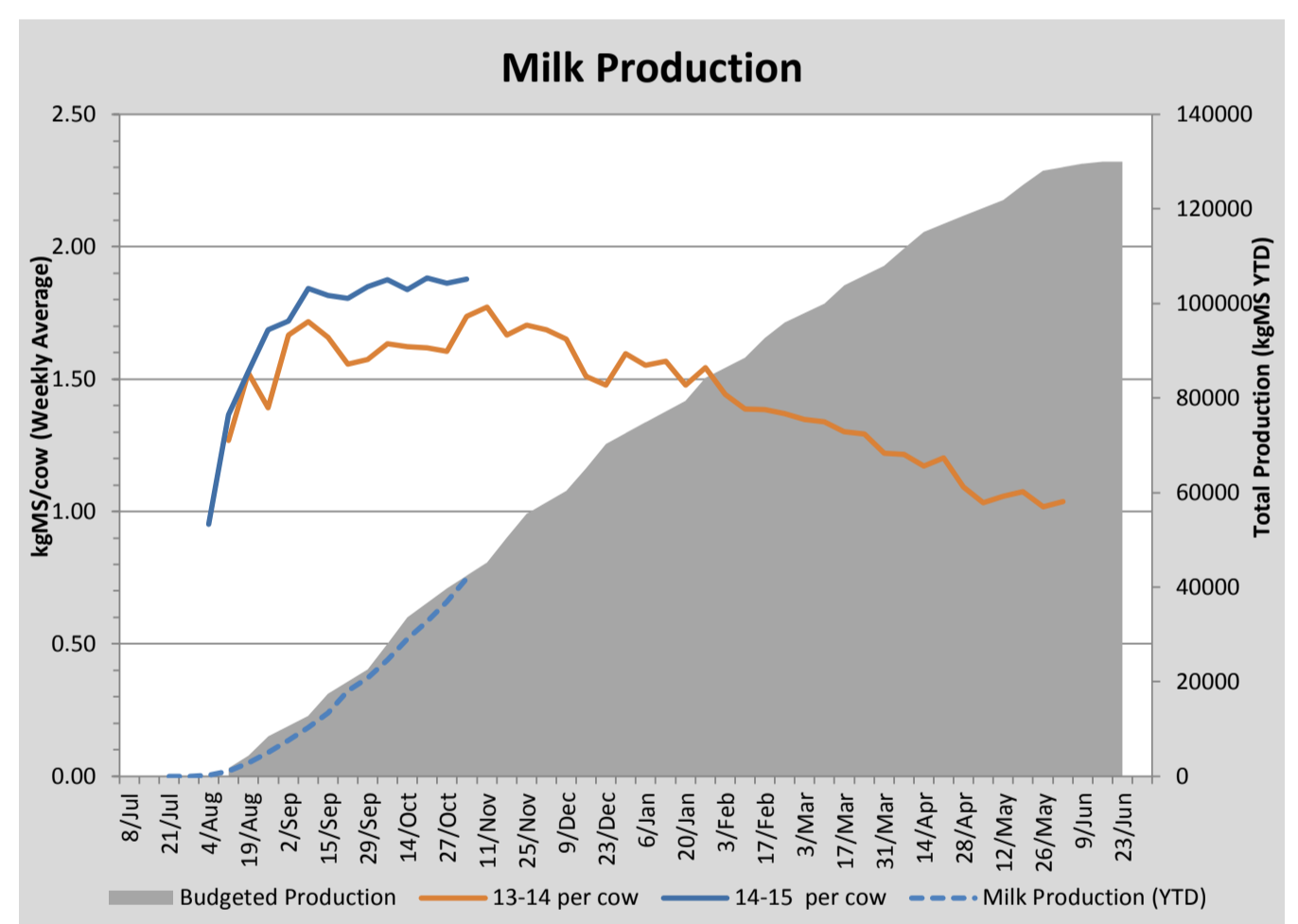
Key Summary Points

- 1 Average pasture cover increased slightly this week to 2709kgDM/ha with paddocks cut for silage returning to the grazing rotation.
- 2 AI on the cows started on the first of November. The response to the double PG synchronisation program was not as good as expected with only 240 cows presenting for insemination within 5 days of the second injection. Poor weather over the weekend may have influenced these results.
- 3 The focus for the coming weeks is to monitor pasture residuals and quality as growth starts to turn reproductive. Pregraze topping or silage conservation will be used where required to maintain quality.

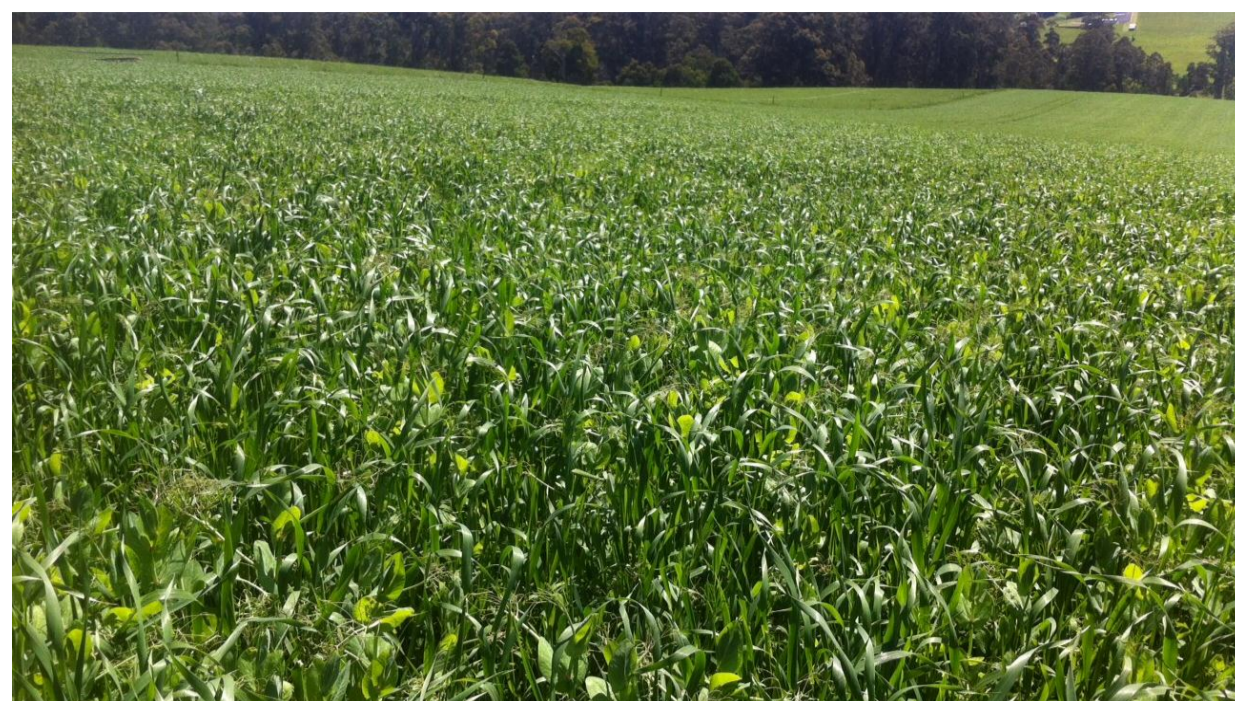
PASTURE INFORMATION	Farm			Irrigated			Rain-fed		
	Last Week	This Week	Variation	Last Week	This Week	Variation	Last Week	This Week	Variation
Grazed milking area (ha)	101.3	107.6	6.3	41.0	39.3	1.7	60.3	68.3	-8
Rotation Length (days)	27	33	5	29	33	3	26	33	6
Grazing allocation per day (ha)	3.7	3.3	-0.4	1.4	1.2	-0.2	2.3	2.1	-0.2
Average time since last grazed (days)	39	32	-7	46	28	-18	35	35	0
Leaf appearance rate (days per leaf)	11	11	-0	11	11	0	11	11	0
Average Pasture Cover (kgDM/ha)	2671	2709	39	2783	2802	19	2603	2656	53
Pasture Growth Rate (kgDM/ha/day)	67	59	-8	77	66	-11	58	55	-3
Post Grazing Biomass (kgDM/ha)	1830	1699	-131						
Nitrogen applied YTD (kgN/ha)	75	93	18	21	30	8	18	11	-7

*Please note all pasture calculations detailed above are based on the current Grazed Milking Area

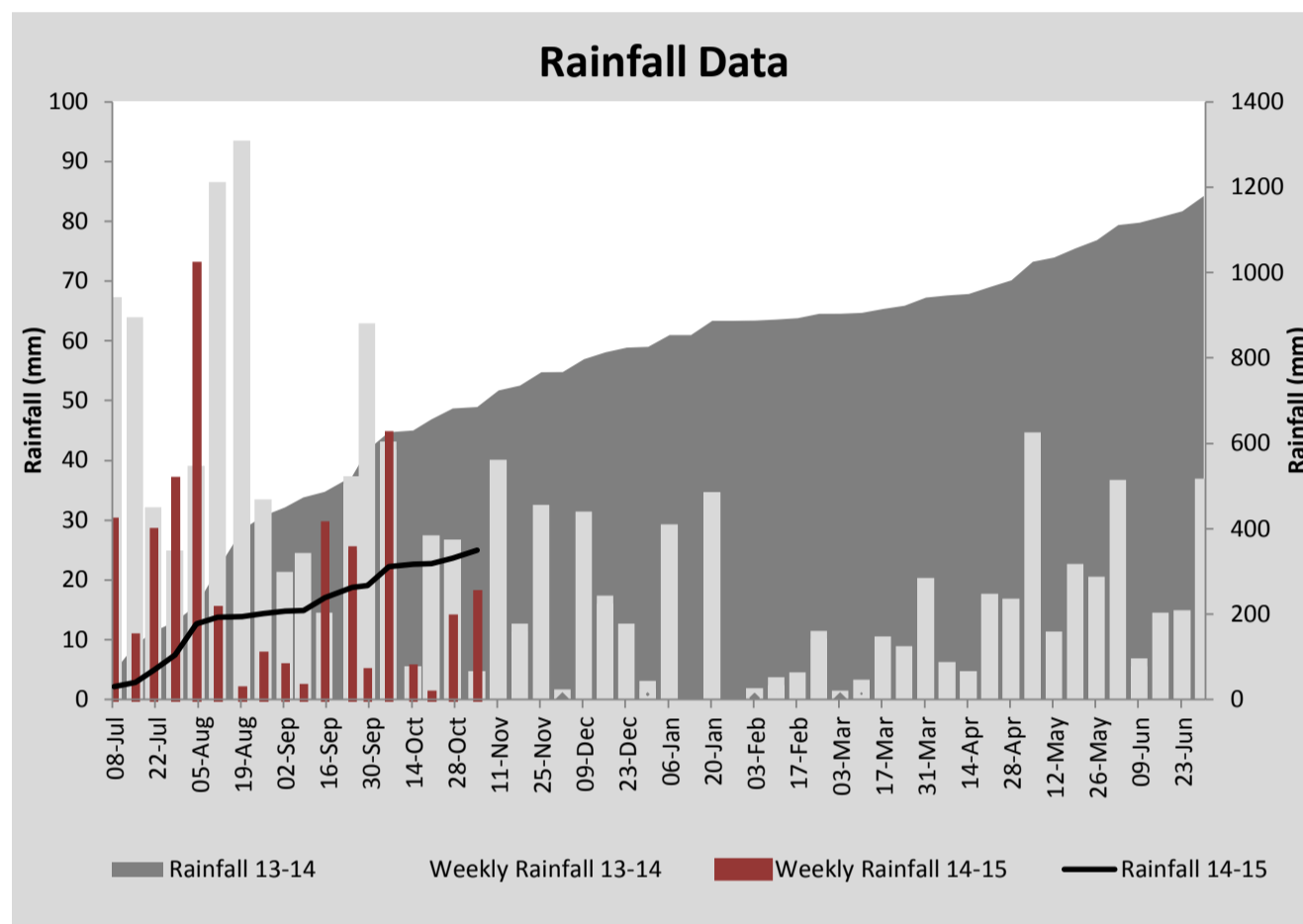
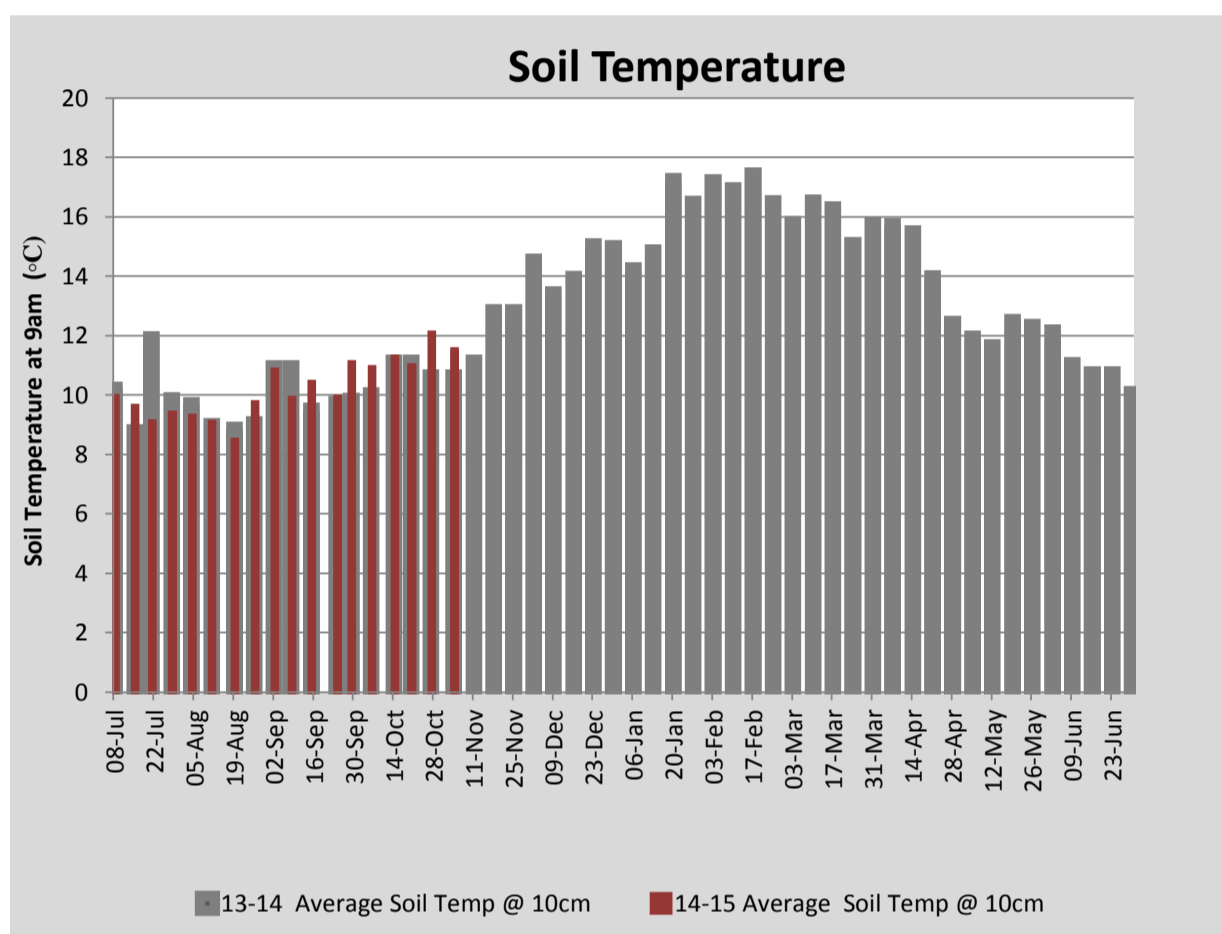
MILK PRODUCTION	Last Week	This Week	Variation
Average No. cows in milk (vat)	346	351	5
Litres per cow	25.9	26.1	0.3
% Fat	4.10	4.08	-0.03
% Protein	2.93	3.13	0.20
MS/cow/day	1.86	1.88	0.02
MS/ha/day	5.70	5.84	0.13
BMCC	107	90	
Average Liveweight (kg)	489	489	
	Budget	To Date	Variation
Total Milk Production (kgMS)	42,454	41,882	99%
MS/ha YTD	379	406	27



Last 7 days					
Milkers Diet	kg DM	MJ ME	CP (%)	NDF (%)	\$/cow
Pasture Intake	16.4	12.2	18.5	45.4	0.0
Concentrates	4.0	12.8	12.3	16.5	0.0
Silage	0.7	10.5	15.0	49.0	0.0
Grazed forage	0.0	0.0	0.0	0.0	0.0
Other feeds	0.0	0.0	0.0	0.0	0.0
Total	21	257.5	17.2	40.0	0
Target		191	16-18	>33	0



Pea and Oat crop



Analysis			
Expected growth rate next 7 days (kgDM/ha/day)	60	Target Leaf Grazing Stage	2.5-3.0
Total Demand from Pasture (kgDM/ha/day)	52	Predicted APC 7 days time	2767
APC balance (kgDM/ha/day)	8	Predicted APC Change	57.7

Discussion

Average pasture cover built slightly this week to 2709kgDM/ha with paddocks cut for silage returning to the rotation. With growth in some of the pastures starting to turn reproductive we will be focusing on maintaining good residuals (around 1600kgDM/ha) and where required pregraze topping or conserving silage to maintain pasture quality. Concentrate allocation will be increased to 5.3kgDM/cow/day (average) over the next fortnight to empty a silo ready for a concentrate feeding study. We expect a pasture surplus to develop as a result of this. Per cow milksoild production is sitting just under 1.9kgMS/cow/day this week and total production is tracking well against budget. Mating started on the 1st of November with all cows synchronised with a double PG program. The response from the program was not as good as expected with only 240 (66% of the herd) presenting for AI by day 5. We will continue to inseminate on heat detection (scratchies) until the 7th of November and then decide based on numbers yet to cycle whether we administer another PG shot to non-cycling cows or use CIDRs for fixed time AI.

4 November 2014

