

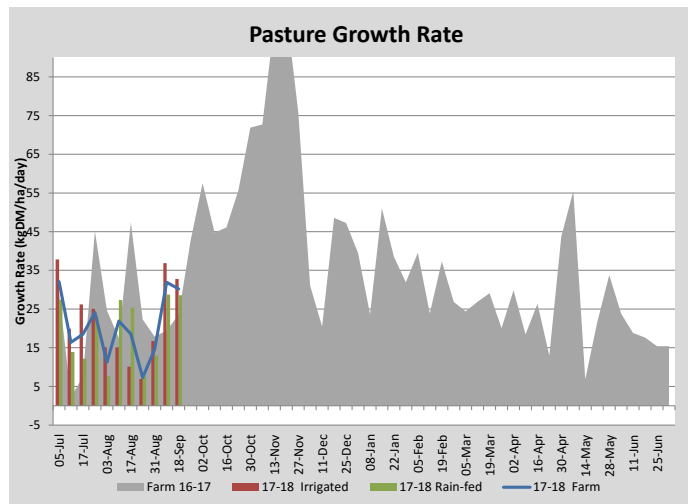
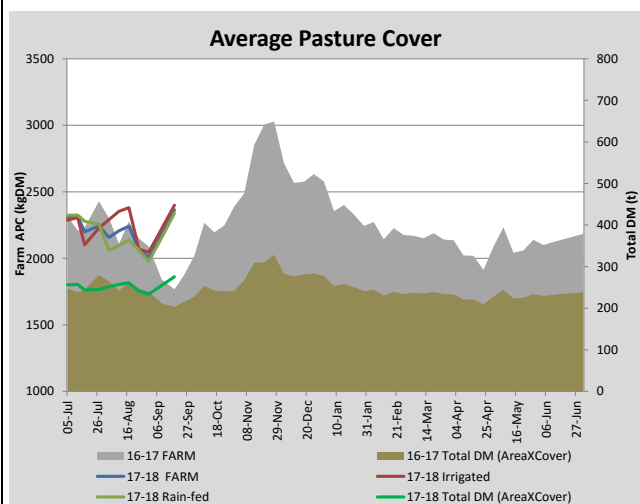
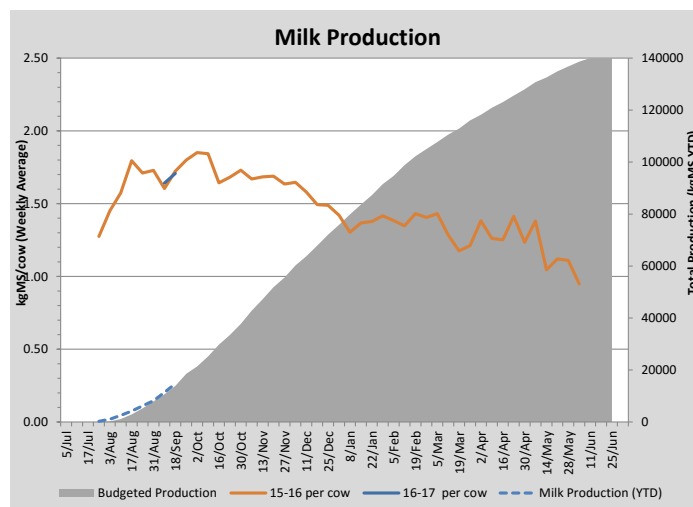
## Key Summary Points

- 1** Calving is almost finished. All calves are being kept this season.
- 2** Pasture growth rates and average pasture cover is increasing.
- 3** Padocks are being prepared for sowing turnips.

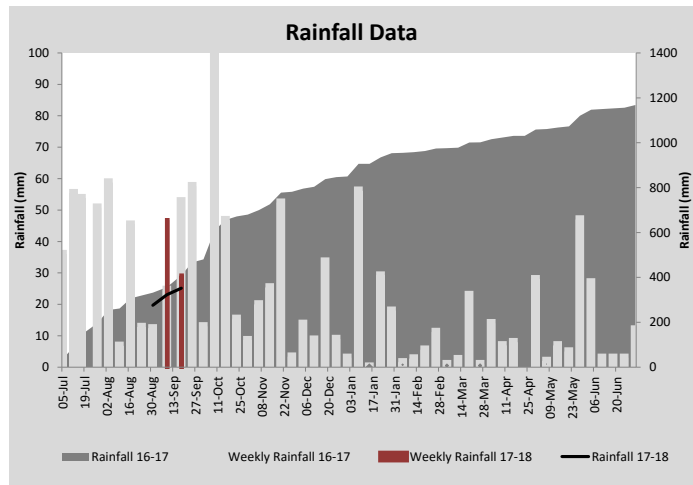
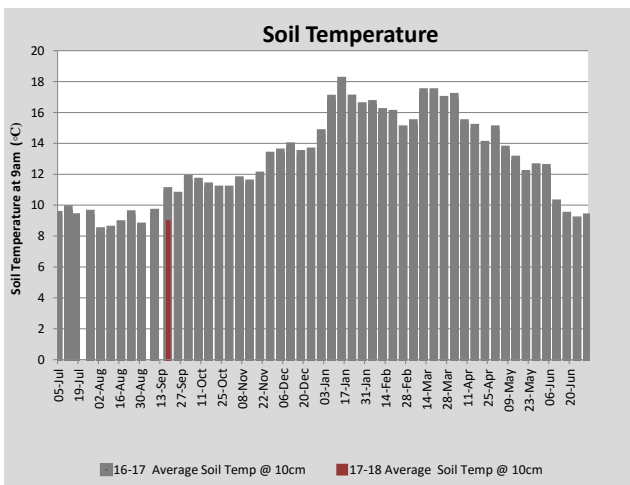
PASTURE INFORMATION	Farm			Irrigated			Rain-fed		
	Last Week	This Week	Variation	Last Week	This Week	Variation	Last Week	This Week	Variation
Grazed milking area (ha)	116.6	116.6	0.0	40.5	49.5	9.0	76.1	67.1	-9
Rotation Length (days)	50	35	-15	40	24	-16	62	54	-8
Grazing allocation per day (ha)	2.3	3.3	1.0	1.2	2.1	0.9	1.1	1.3	0.2
Average time since last grazed (days)	80	75	-5	80	75	-5	80	75	-5
Leaf appearance rate (days per leaf)	14	14	0	14	14	0	14	14	0
Average Pasture Cover (kgDM/ha)	2184	2365	180	2223	2399	177	2156	2339	183
Pasture Growth Rate (kgDM/ha/day)	32	30	-2	37	33	-4	29	29	-0
Post Grazing Biomass (kgDM/ha)	1551	1585	34						
Nitrogen applied YTD (kgN/ha)	8	8	0	0	0	0	0	0	0

\*Please note all pasture calculations detailed above are based on the current Grazed Milking Area

MILK PRODUCTION	Last Week	This Week	Variation
Average No. cows in milk (vat)	270	280	10
Litres per cow	21.0	22.1	1.1
% Fat	4.52	4.50	-0.02
% Protein	3.26	3.17	-0.09
MS/cow/day	1.64	1.71	0.07
MS/ha/day	3.92	4.23	0.31
BMCC	222,714	235,000	12,286
Average Liveweight (kg)	0	0	0
	Budget	To Date	Variation
Total Milk Production (kgMS)	13,868	14,733	106%
MS/ha YTD	122	137	113%



Last 7 days					
Milkers Diet	kg DM	MJ ME	CP (%)	NDF (%)	\$/cow
Pasture Intake	12.5	0.0	0.0	0.0	0.0
Concentrates	4.5	0.0	0.0	0.0	0.0
Silage	0.0	0.0	0.0	0.0	0.0
Grazed forage	0.0	0.0	0.0	0.0	0.0
Other feeds	0.0	0.0	0.0	0.0	0.0
<b>Total</b>	<b>17</b>				<b>0</b>
<b>Target</b>			<b>16-18</b>	<b>&gt;33</b>	<b>0</b>



Analysis			
Expected growth rate next 7 days (kgDM/ha/day)	35	Target Leaf Grazing Stage	2.5-3.0
Total Demand from Pasture (kgDM/ha/day)	32	Predicted APC 7 days time	2383
APC balance (kgDM/ha/day)	3	Predicted APC Change	18.7

## Discussion

Calving is almost finished for this season with only 20 cows left to calve. All calves (heifers and bulls) have been kept this season. Bull calves kept from last season will start to be sold in October. Pasture is growing well and average pasture covers have started to increase. Grazing residuals have been difficult to manage because of the wet weather causing the cows to muddy the grass rather than grazing it effectively. Paddocks with longer residuals will be targeted for harder grazing or silage in the next rotation. Rotation length is being shortened to maintain quality and feed the cows well. Only one application of nitrogen has been applied so far this season. More will be applied as paddocks dry and become more accessible. Four hectares is being prepared to sow a turnip crop.

# 18 September 2017

