

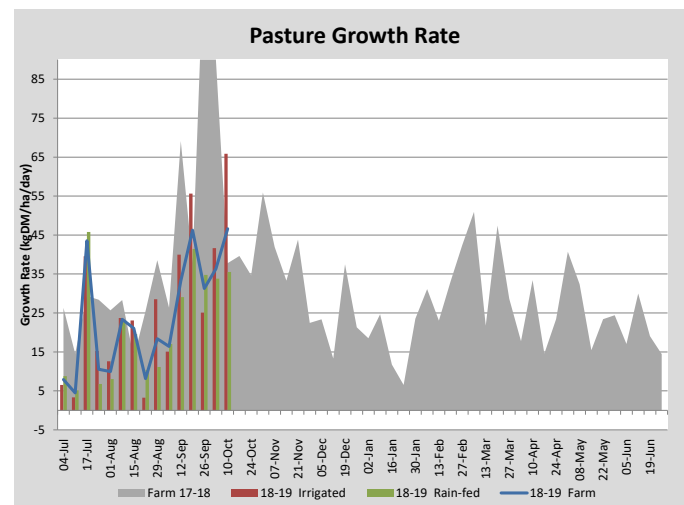
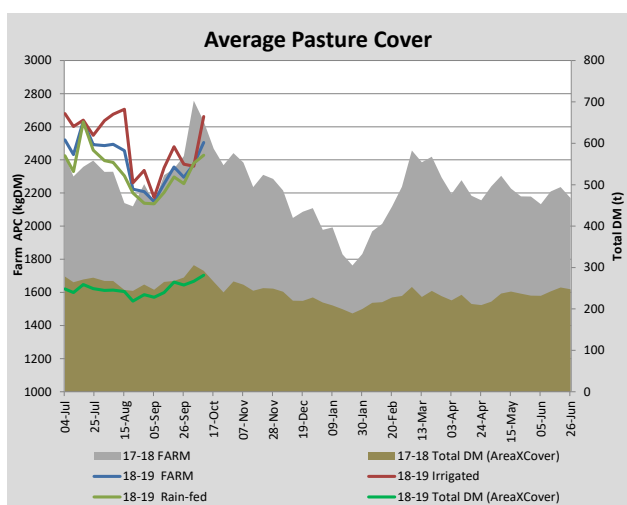
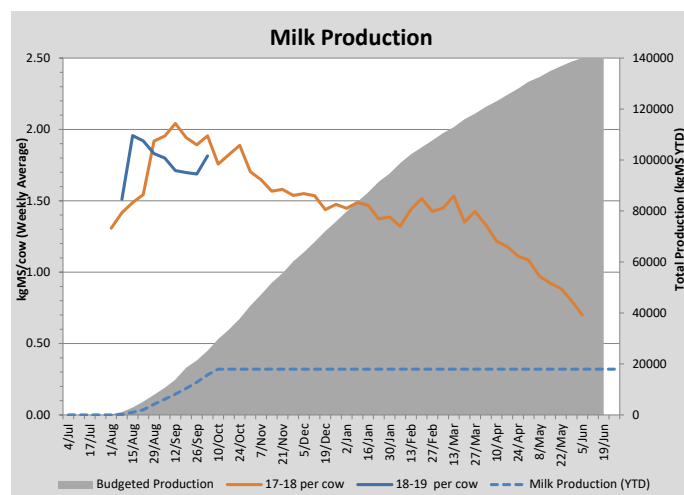
Key Summary Points

- 1 Pasture growth is still relatively low.
- 2 Cows were condition scored this week.
- 3 Heifers were synchronised this week.

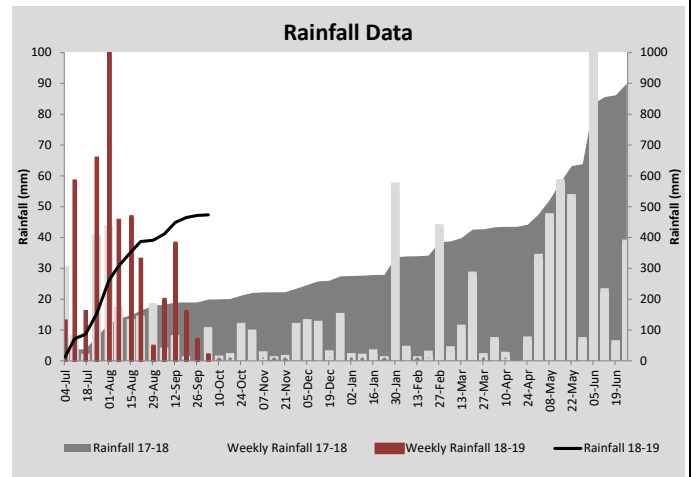
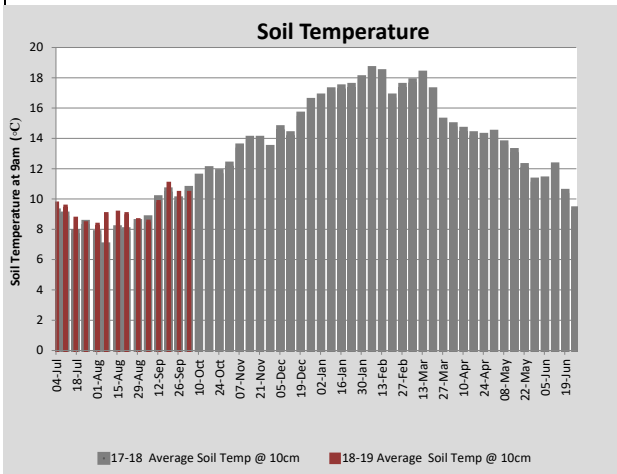
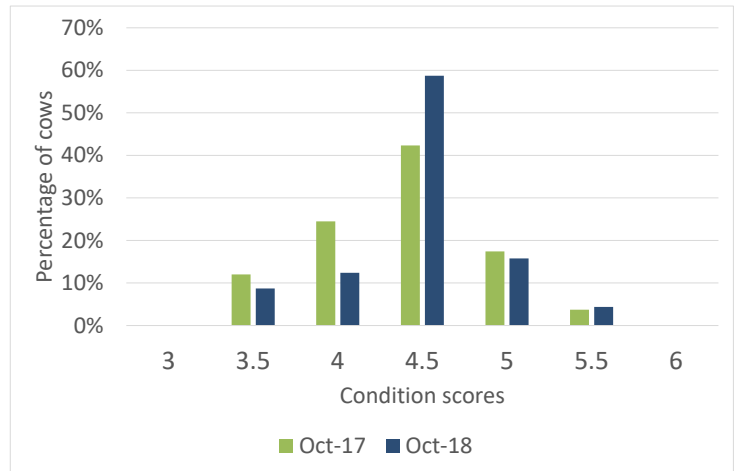
PASTURE INFORMATION	Farm			Irrigated			Rain-fed		
	Last Week	This Week	Variation	Last Week	This Week	Variation	Last Week	This Week	Variation
Grazed milking area (ha)	112.3	112.3	0.0	37.2	37.2	0.0	75.2	75.2	0.0
Leaf appearance rate (days per leaf)	14	14	-0	14	13	-1	14	14	0
Average Pasture Cover (kgDM/ha)	2295	2374	79	2374	2362	-12	2257	2380	123
Pasture Growth Rate (kgDM/ha/day)	31	36	5	25	42	17	35	34	-1
Post Grazing Biomass (kgDM/ha)	1563	1550	-13						
Nitrogen applied YTD (kgN/ha)	21	26	5	8	16	8	2	0	-2

*Please note all pasture calculations detailed above are based on the current Grazed Milking Area

MILK PRODUCTION	Last Week	This Week	Variation
Average No. cows in milk (vat)	267	287	20
Litres per cow	23.6	25.4	1.8
% Fat	3.99	3.86	-0.12
% Protein	3.26	3.29	0.03
MS/cow/day	1.69	1.81	0.13
MS/ha/day	3.99	4.61	0.62
BMCC	184	182	-2
Average Liveweight (kg)	0	0	0
	Budget	To Date	Variation
Total Milk Production (kgMS)	25,225	15,750	-62%
MS/ha YTD	221		



Last 7 days					
Milkers Diet	kg DM	MJ ME	CP (%)	NDF (%)	\$/cow
Pasture Intake	14.0	11.8	23.4	46.2	0.0
Concentrates	5.0	12.5	14.0	20.0	0.0
Silage	0.0	0.0	0.0	0.0	0.0
Grazed forage	0.0	0.0	0.0	0.0	0.0
Other feeds	0.0	0.0	0.0	0.0	0.0
Total	19	227.7	20.9	39.3	0
Target		210	16-18	>33	0



Analysis			
Expected growth rate next 7 days (kgDM/ha/day)	45	Target Leaf Grazing Stage	2.5-3.0
Total Demand from Pasture (kgDM/ha/day)	35	Predicted APC 7 days time	2443
APC balance (kgDM/ha/day)	10	Predicted APC Change	69.3

Discussion

Pasture growth rates have increased on the irrigated area of the farm but overall remain relatively low for this time of the year. The focus is on grazing at the 3-leaf stage to maximise the amount of pasture grown until the pasture starts becoming reproductive at which point the rotation will be shortened. Nitrogen continues to be applied at the higher rate. The milking herd was conditioned scored this week and the average score was 4.5 which is 0.2 higher than at the same time last year. The graph at the top of this page shows the range. Any cows below condition score 4 will receive an extra kilogram of concentrates. The heifers were synchronised this week using Cue-Mates. Mating start date for the heifers is 17 October and the milking herd is 23 October. Weighing of young stock is scheduled for next week.

3 October 2018

