

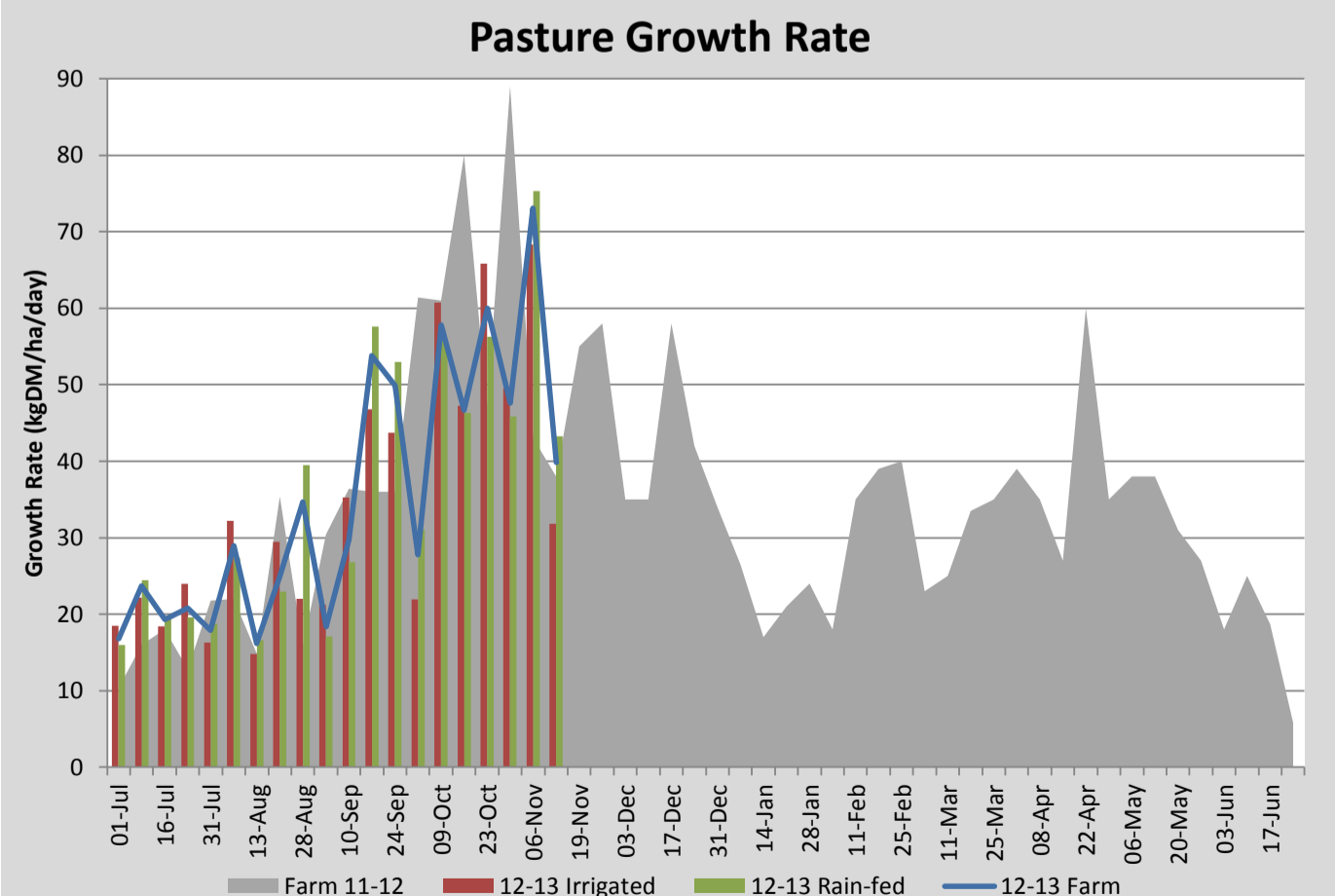
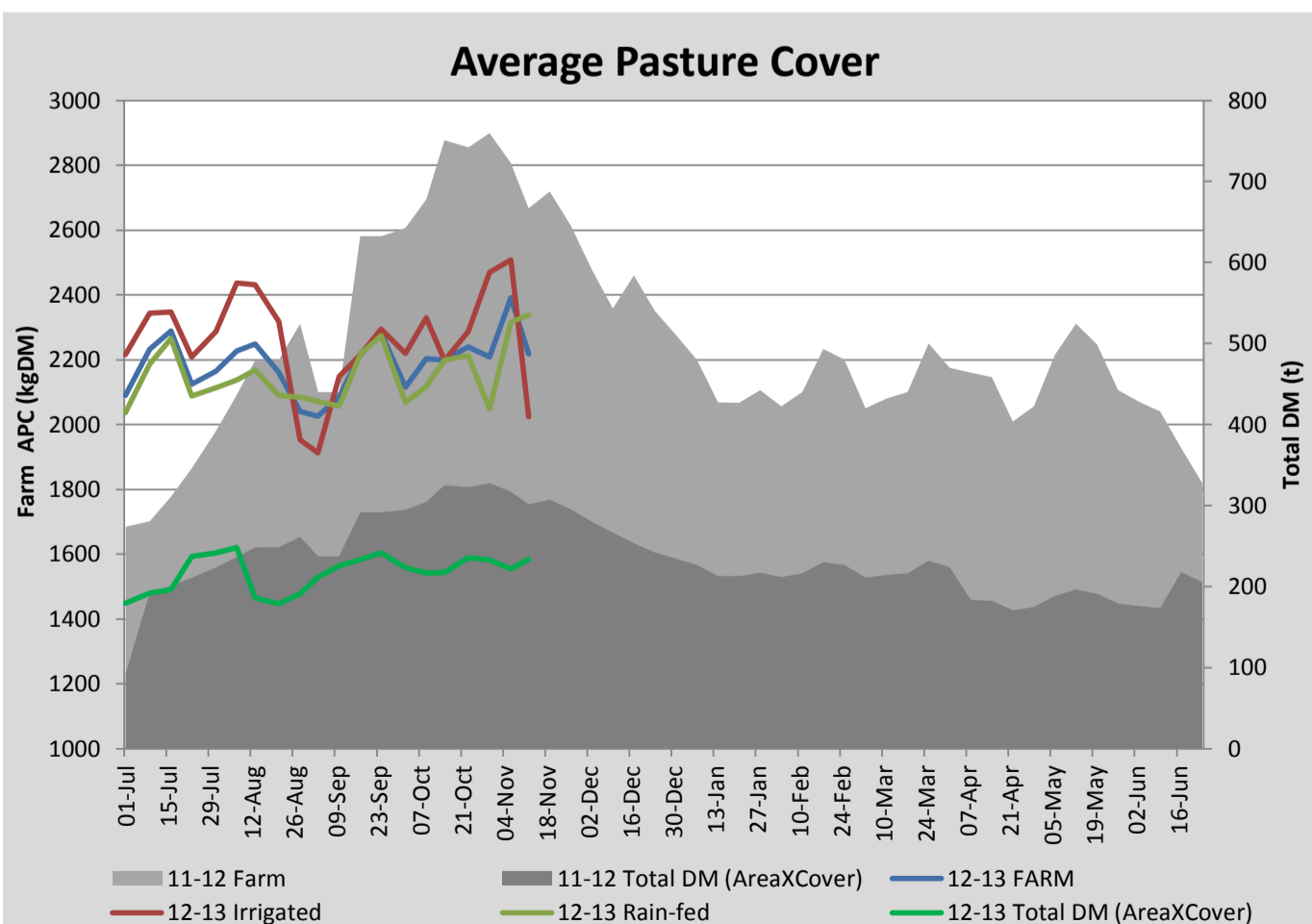
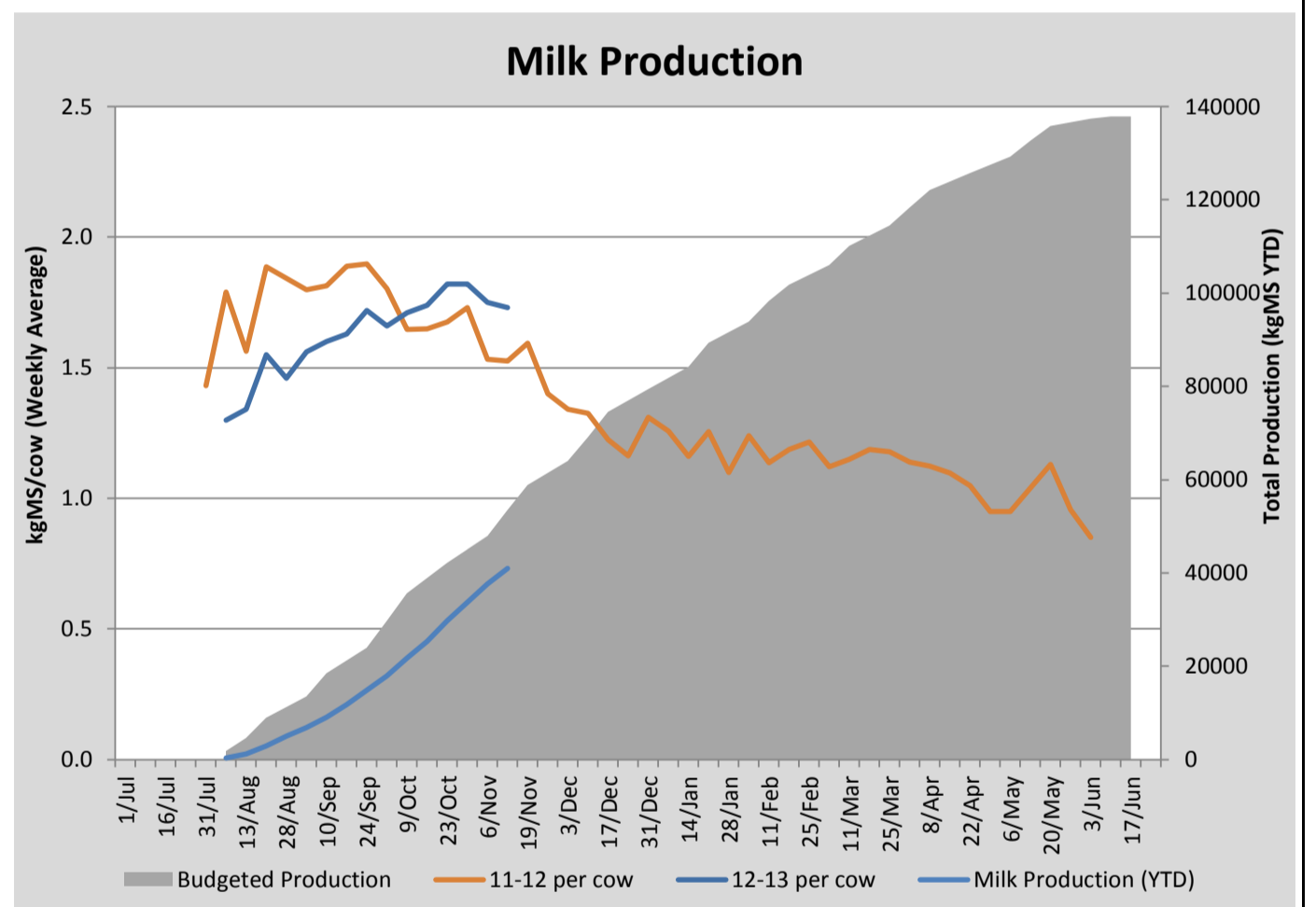
Key Summary Points

- Soil moisture has dried out very quickly the past week and pasture growth rates have dropped to below demand.
- Silage on the milking platform has been harvested and paddocks are now back in the rotation.
- Key focus this week is keeping irrigation going (especially on new grass), fixing remaining technical issues and stretching out the rotation length on the rain-fed pastures.

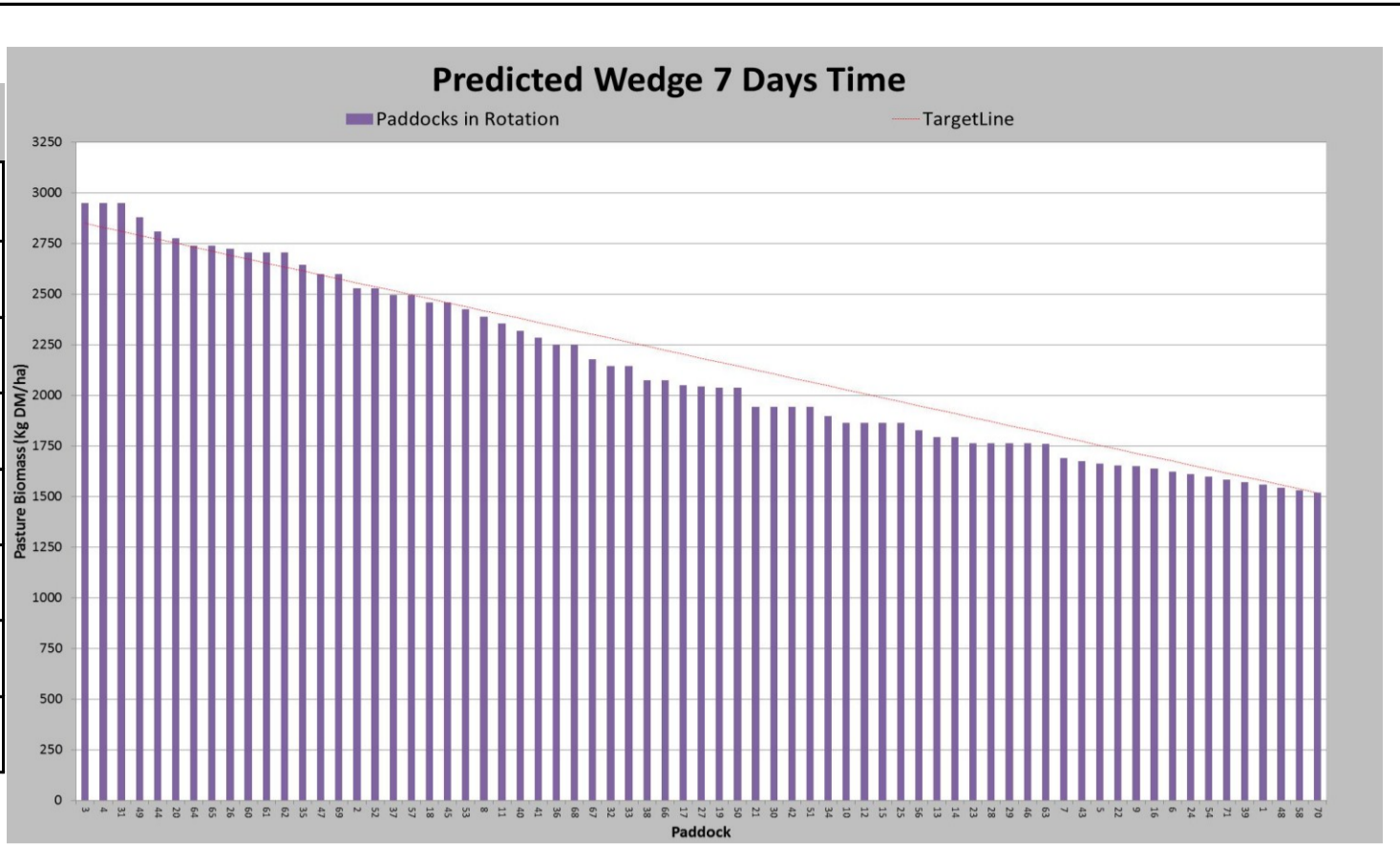
PASTURE INFORMATION	Farm			Irrigated			Rain-fed		
	Last Week	This Week	Variation	Last Week	This Week	Variation	Last Week	This Week	Variation
Grazed milking area (ha)	92.9	105.4	12.5	56.0	65.1	9.07	36.8	40.3	3.42
Rotation Length (days)	26	27		33	16		22	47	
Grazing allocation per day (ha)	3.6	3.9	0.30	1.1	2.5	1.40	2.5	1.4	1.10
Average time since last grazed (days)	25	27	2	25	27	-2	25	27	2
Leaf appearance rate (days per leaf)	9	11	2	9	10	1	9	12	3
Average Pasture Cover (kgDM/ha)	2392	2218	-174	2507	2024	-483	2316	2337	22
Pasture Growth Rate (kgDM/ha/day)	73	40	-33	68	32	-37	75	43	-32
Post Grazing Biomass (kgDM/ha)	1600	1650	50						
Nitrogen applied YTD (kgN/ha)	105	123	18	0	11	11	0	7	7

*Please note all pasture calculations detailed above are based on the current Grazed Milking Area

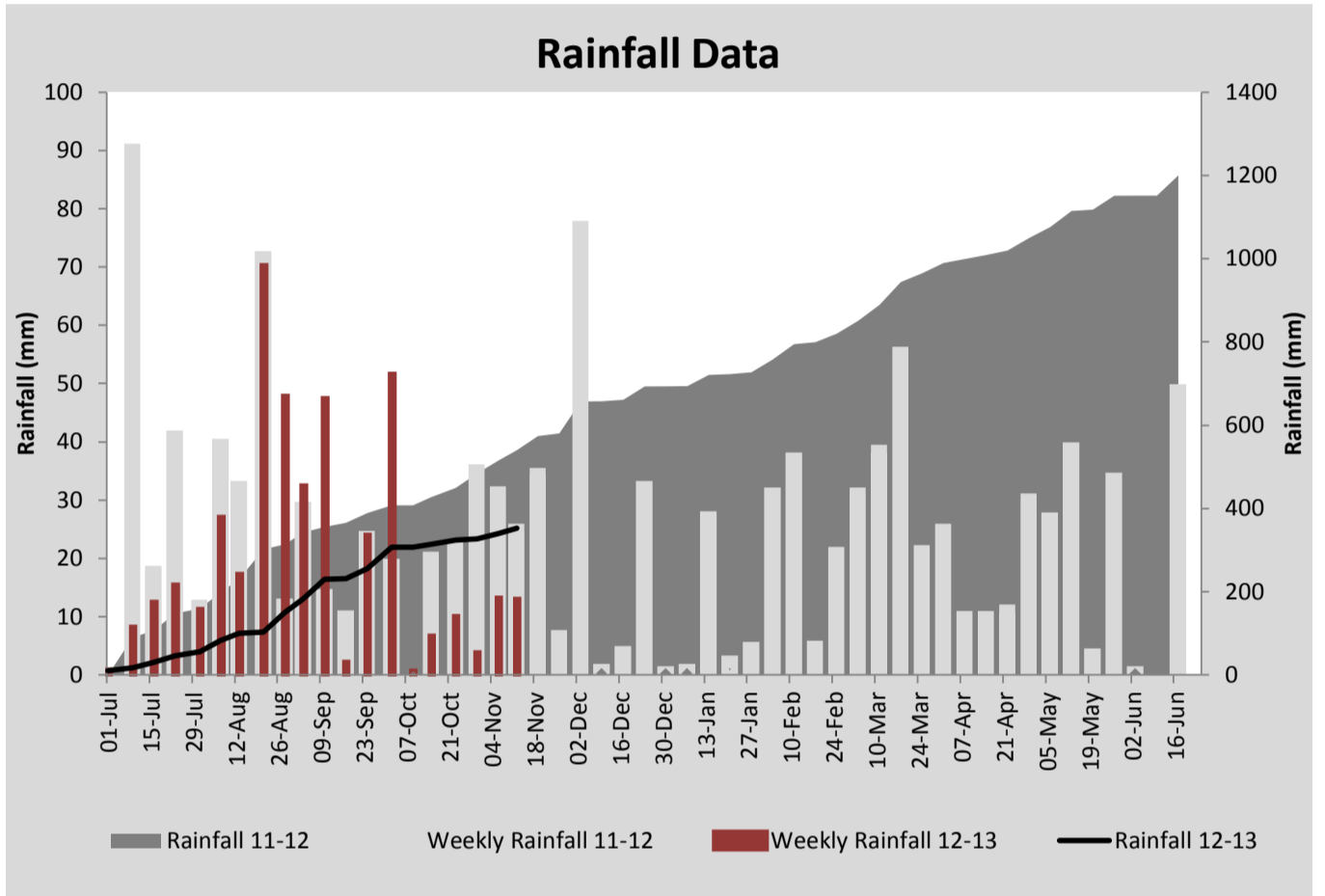
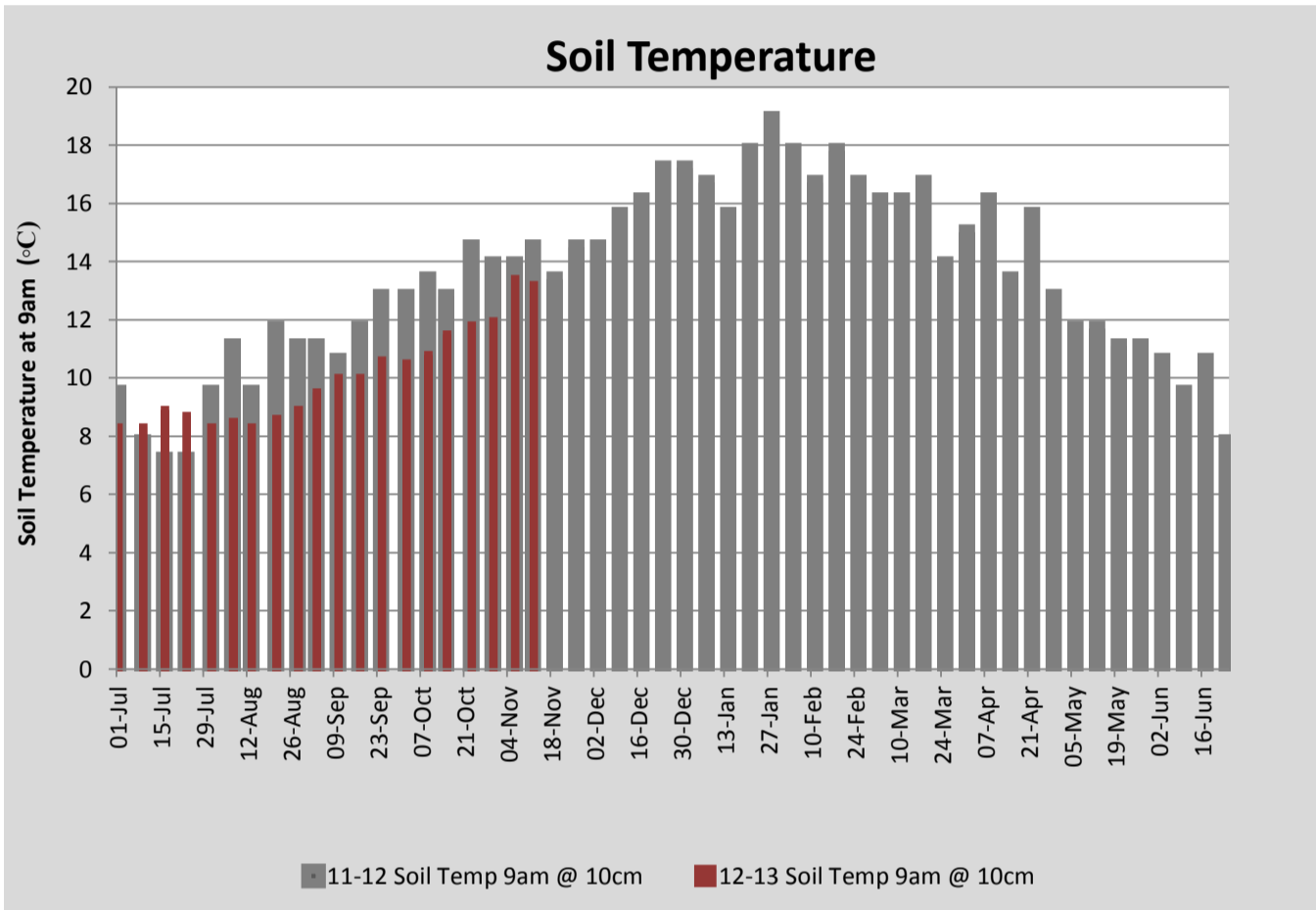
MILK PRODUCTION	Last Week	This Week	Variation
No cows in milk (vat)	323	330	7.00
Litres per cow	24.6	24.2	0.40
% Fat	4.00	4.02	0.02
% Protein	3.10	3.10	0.00
MS/cow/day	1.75	1.73	0.02
MS/ha/day	5.16	4.73	0.44
BMCC	200	196	4.00
Average Liveweight (kg)			
	Budget	To Date	Variation
Total Milk Production (kgMS)	53489	40928.00	77%
MS/ha YTD	478	365	-112



Last 7 days					
Milkers Diet	kg DM	ME	CP	NDF	\$/cow
Pasture Intake	16.0	12.0	0.0	0.0	0.0
Concentrates	2.0	12.0	0.0	0.0	0.0
Silage	0.0	0.0	0.0	0.0	0.0
Grazed forage	0.0	0.0	0.0	0.0	0.0
Other feeds	0.0	0.0	0.0	0.0	0.0
Total	18	216	0	0	0
Target	18		0	0	0



Predicted Feed Wedge if pasture growth rates drop to 35kgDM/ha/day



Analysis			
Expected growth rate next 7 days (kgDM/ha/day)	40	Target Leaf Grazing Stage	2.5
Total Demand from Pasture (kgDM/ha/day)	48	Predicted APC 7 days time	2163
APC balance (kgDM/ha/day)	-8	Predicted APC Change	-55.0

Discussion

Soil moisture levels have started limiting pasture growth (approaching 50 centibars at 30cm on rain-fed pastures). We have had intermittent irrigation running the last 7 days as we continue to fix technical problems with the new system and implement a fixed k-line system for the trial paddocks. Our key focus this week will be keeping irrigation going to maintain soil moisture and growth rates under the irrigated portion of the farm. Because of the drop in soil moisture (and lack of forecast rain in the near future) we will start to stretch the rain-fed rotation out this week. For the next 7 days we will use 1/32nd of the milking platform per day (32 day rotation). This will help maintain covers should pasture growth rates drop further this week (see predictive wedge scenario above). All silage paddocks on the milking platform have now been baled and are back in the rotation. The only areas now out are the new grass paddocks which have been very slow establishing and we will cross drill them this week to help improve plant density. Our three week submission rate sits at 80% of the herd.

12 November 2012

