

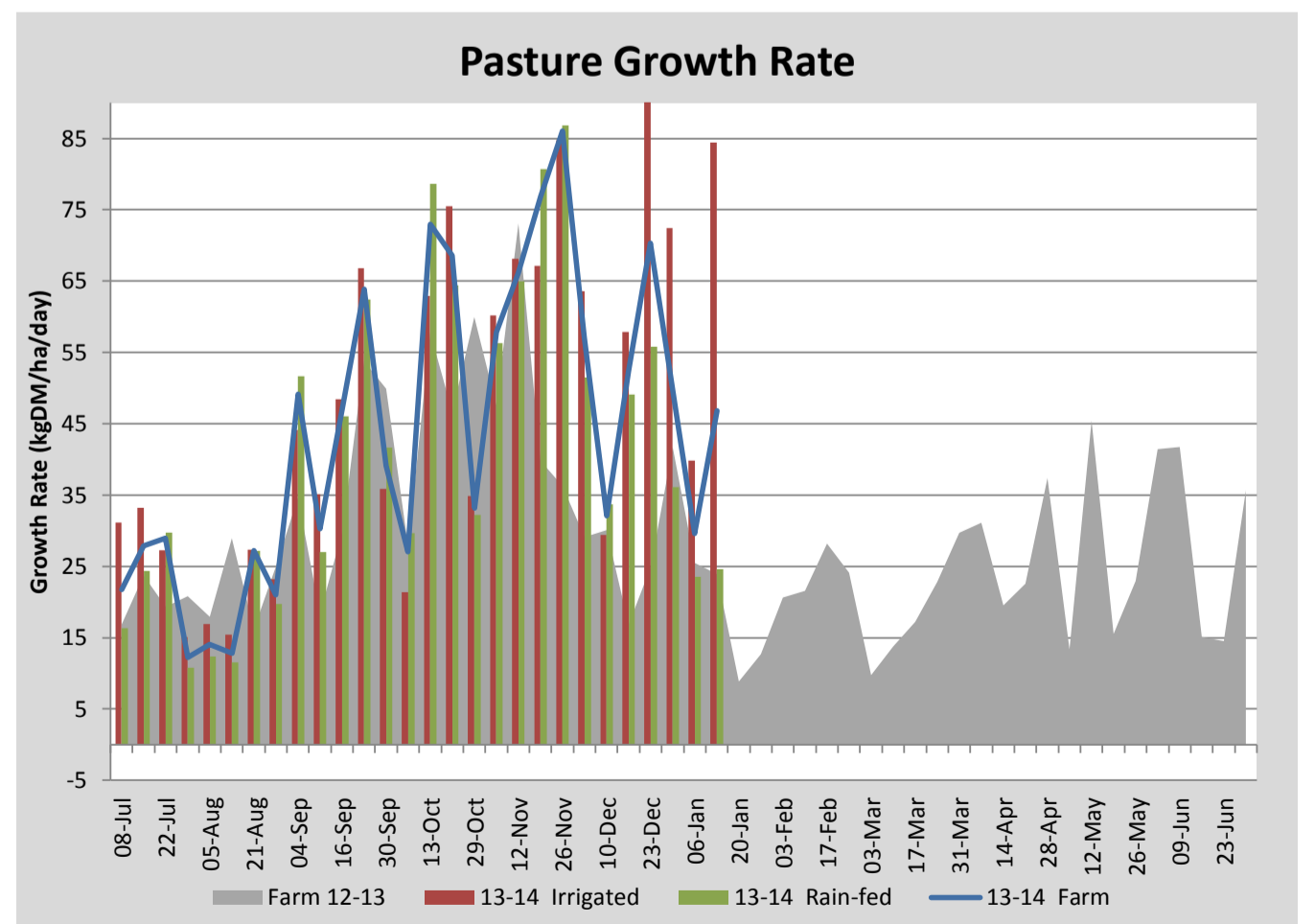
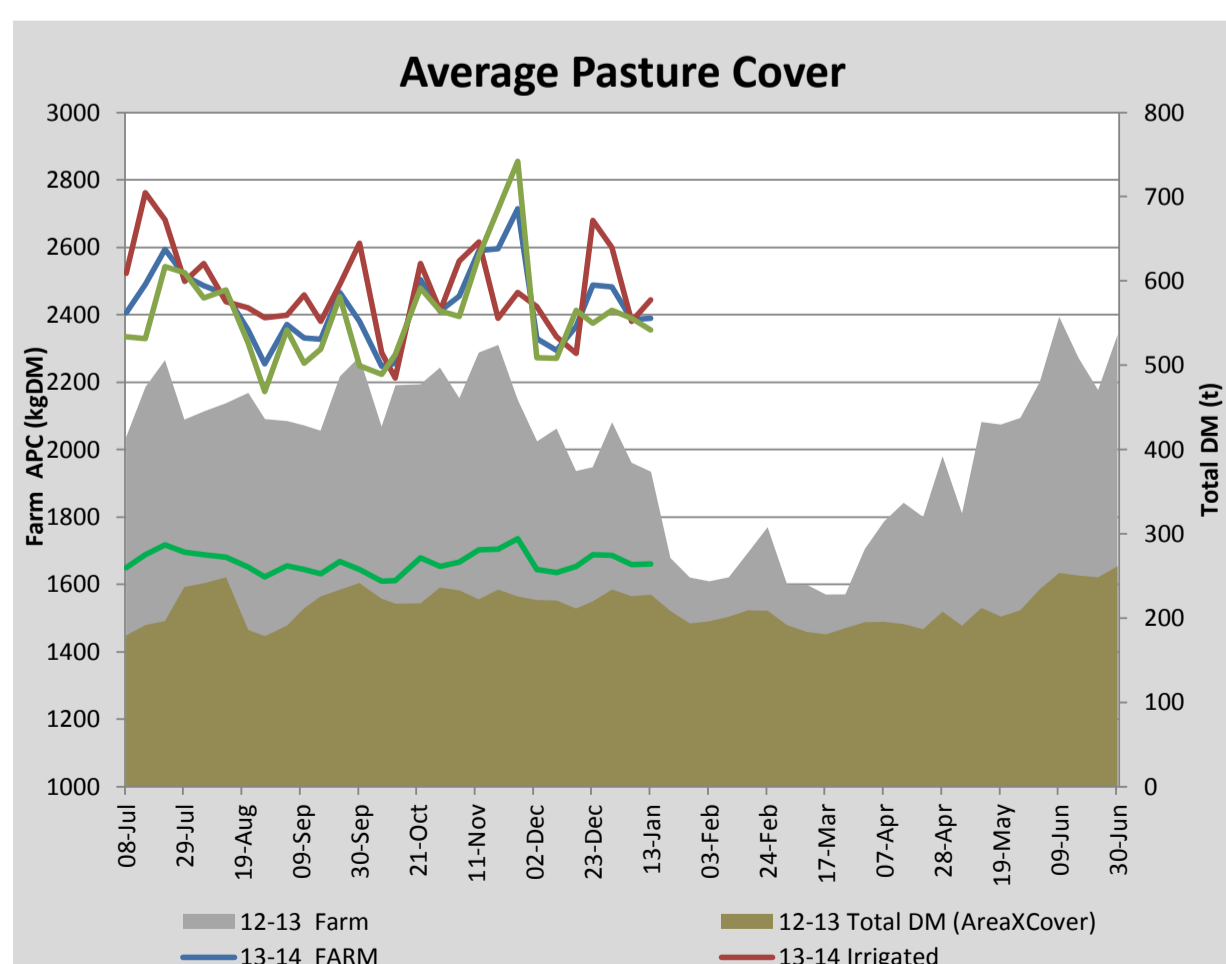
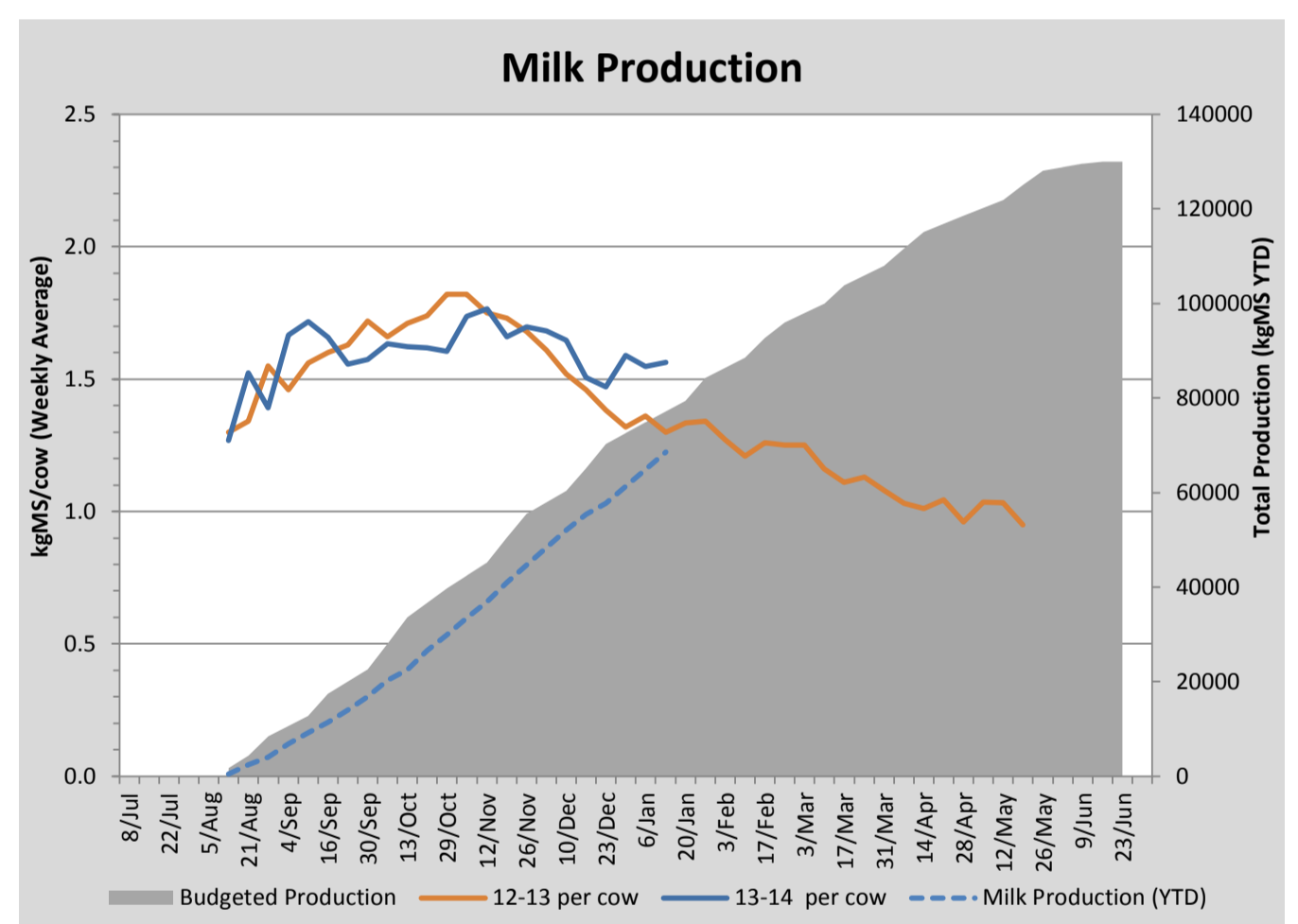
Key Summary Points

- 1 Average pasture cover has held this week at 2388kgDM/ha with good growth recorded on the irrigated paddocks.
- 2 Calves and heifers (R2) were weighed this week. The R2's are on target with the calves a little behind target at present.
- 3 The key focus for the coming week is to maintain average pasture cover by slowing the rotation on the dryland and reducing the DM allocation to 18kgDM/cow/day.

PASTURE INFORMATION	Farm			Irrigated			Rain-fed		
	Last Week	This Week	Variation	Last Week	This Week	Variation	Last Week	This Week	Variation
Grazed milking area (ha)	110.5	110.5	0.0	41.0	41.0	0.0	69.5	69.5	0
Rotation Length (days)	32	39	8	41	22	-19	28	77	49
Grazing allocation per day (ha)	3.5	2.8	-0.7	1.0	1.9	0.9	2.5	0.9	-1.6
Average time since last grazed (days)	33	35	2	28	32	4	36	37	1
Leaf appearance rate (days per leaf)	11	11	0	10	10	0	12	12	0
Average Pasture Cover (kgDM/ha)	2386	2388	3	2379	2445	65	2389	2355	-34
Pasture Growth Rate (kgDM/ha/day)	30	47	17	40	84	45	24	25	1
Post Grazing Biomass (kgDM/ha)	1550	1553	3						
Nitrogen applied YTD (kgN/ha)	85	91	6	13	7	-6	7	6	-1

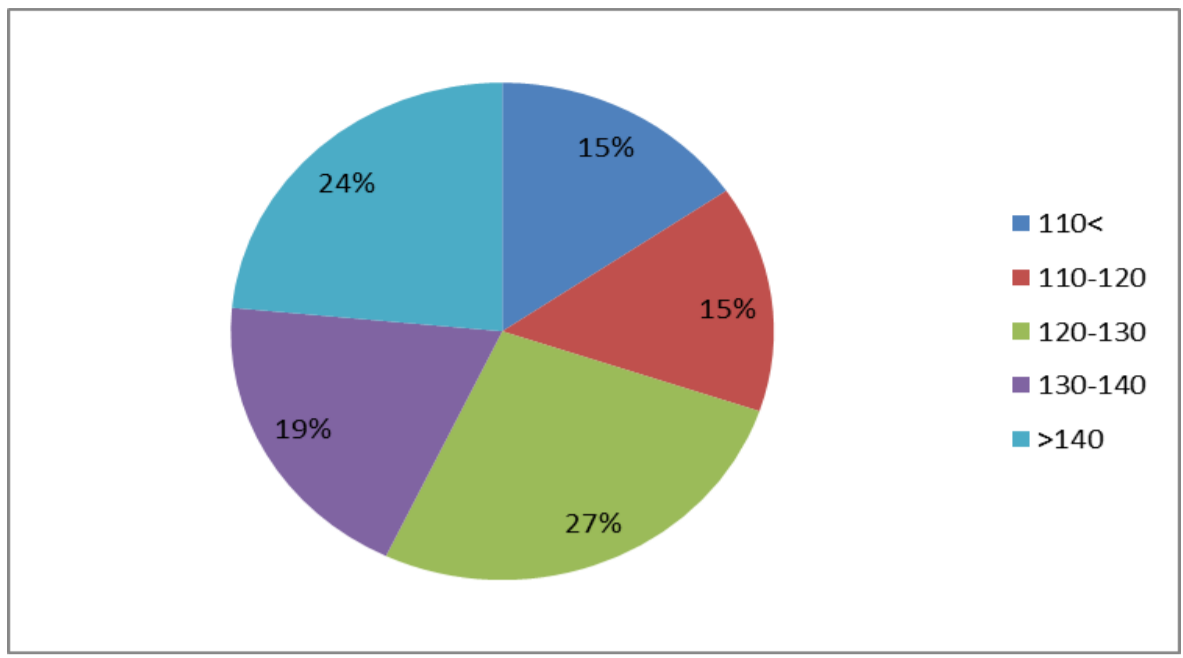
*Please note all pasture calculations detailed above are based on the current Grazed Milking Area

MILK PRODUCTION	Last Week	This Week	Variation
Average No. cows in milk (vat)	334	329	-5
Litres per cow	21.1	21.8	0.8
% Fat	4.13	3.98	-0.15
% Protein	3.28	3.18	-0.10
MS/cow/day	1.55	1.56	0.02
MS/ha/day	4.57	4.55	-0.02
BMCC	157	109	-48
Average Liveweight (kg)	497	502	5
	Budget	To Date	Variation
Total Milk Production (kgMS)	77,137	68,530	89%
MS/ha YTD	689	653	-35

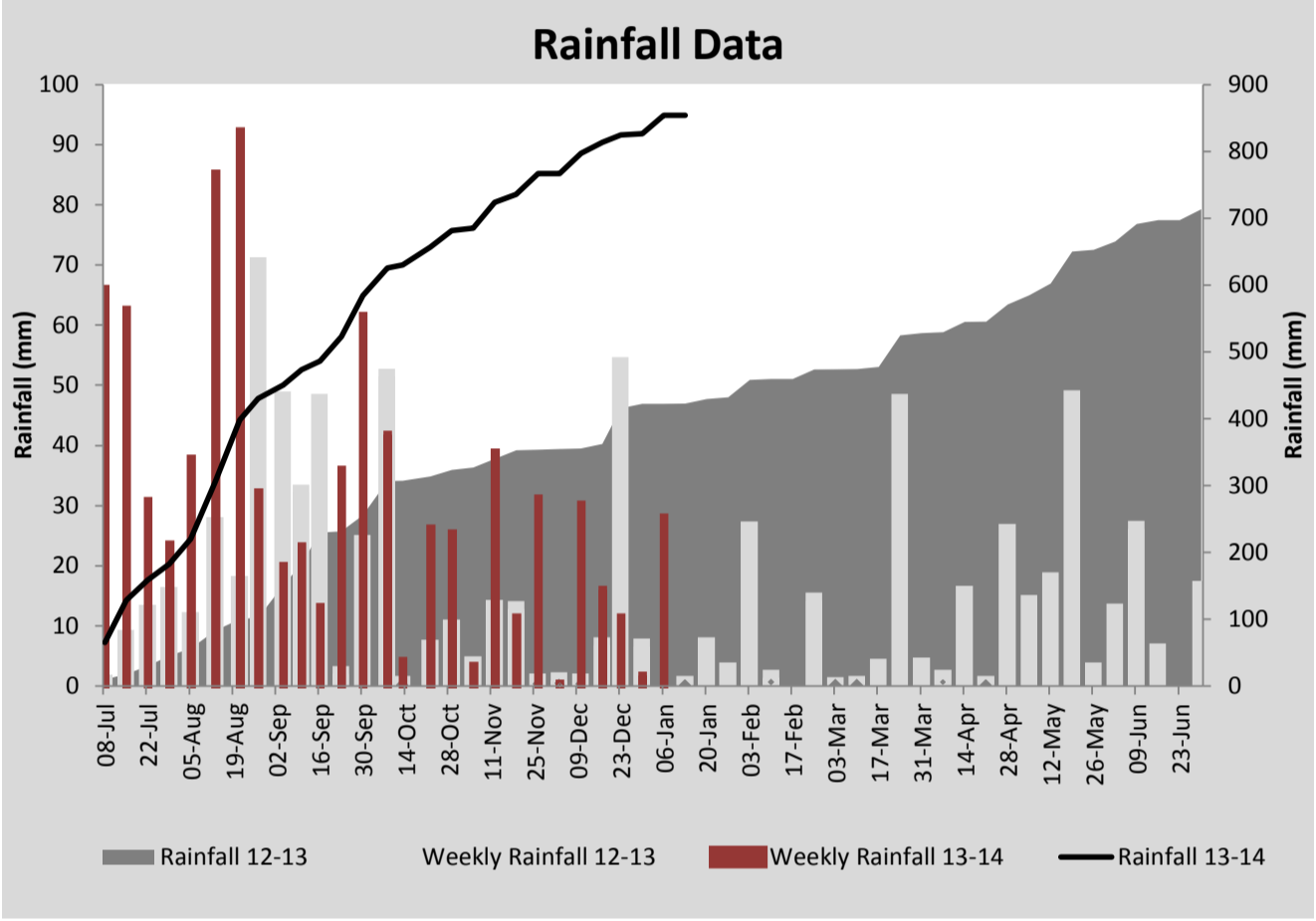
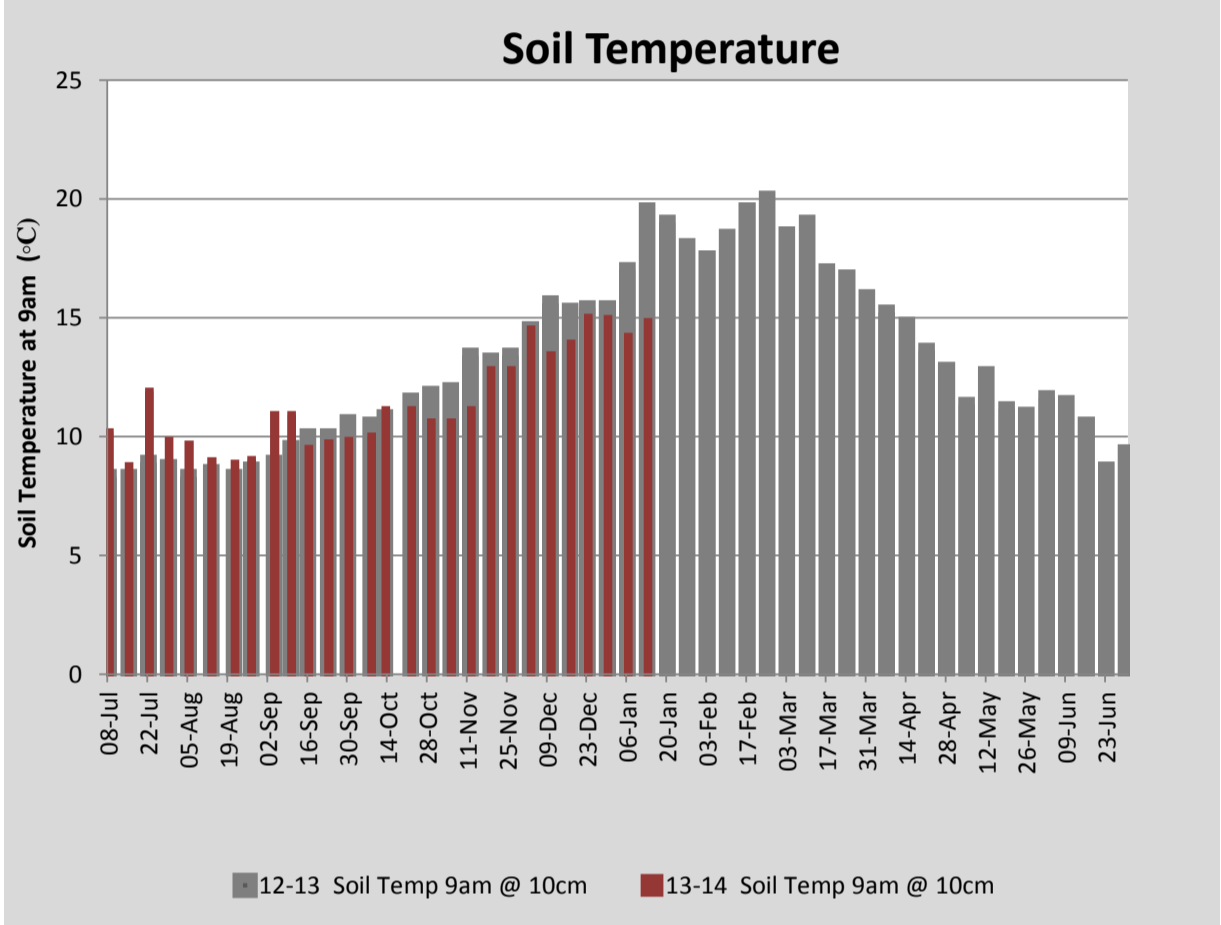


Last 7 days					
Milkers Diet	kg DM	MJ ME	CP (%)	NDF (%)	\$/cow
Pasture Intake	15.0	11.5	22.3	49.5	0.0
Concentrates	3.5	13.0	11.0	21.0	0.0
Silage	0.5	10.5	15.0	49.0	0.0
Grazed forage	0.0	0.0	0.0	0.0	0.0
Other feeds	0.0	0.0	0.0	0.0	0.0
Total	19	223.3	20.0	44.2	0
Target	191	16-18	>33	0	

Note: silage nutritional content is estimated based on pasture analysis during silage season, testing will be conducted early in 2014.



Calf weights as of 8/1/2014



Analysis			
Expected growth rate next 7 days (kgDM/ha/day)	41	Target Leaf Grazing Stage	2.5
Total Demand from Pasture (kgDM/ha/day)	46	Predicted APC 7 days time	2356
APC balance (kgDM/ha/day)	-5	Predicted APC Change	-32.1

Discussion

Average pasture cover has held this week due to strong growth on the irrigated portion of the platform. Growth on the rainfed paddocks remains at the same this week at 25kgDM/ha/day. Current growth rates are matching daily demand however if dry conditions persist we are expecting a feed deficit to develop. We will look to slow the rotation on the dryland over the coming weeks to approximately 60 days. To achieve this we will drop the current dry matter allocation from 19 to 18kgDM/head/day and start to dry off cows based on production. A herd test was conducted last week and 6 cows were pulled out of the herd for treatment resulting in a significant improvement in the BMCC. R1 and R2 heifers were weighed this week. R2 heifers are on target, averaging 352kg. R1 are a little behind target, averaging 126kg (a break down of the calf weights can be seen in the chart above).

13 January 2014

