

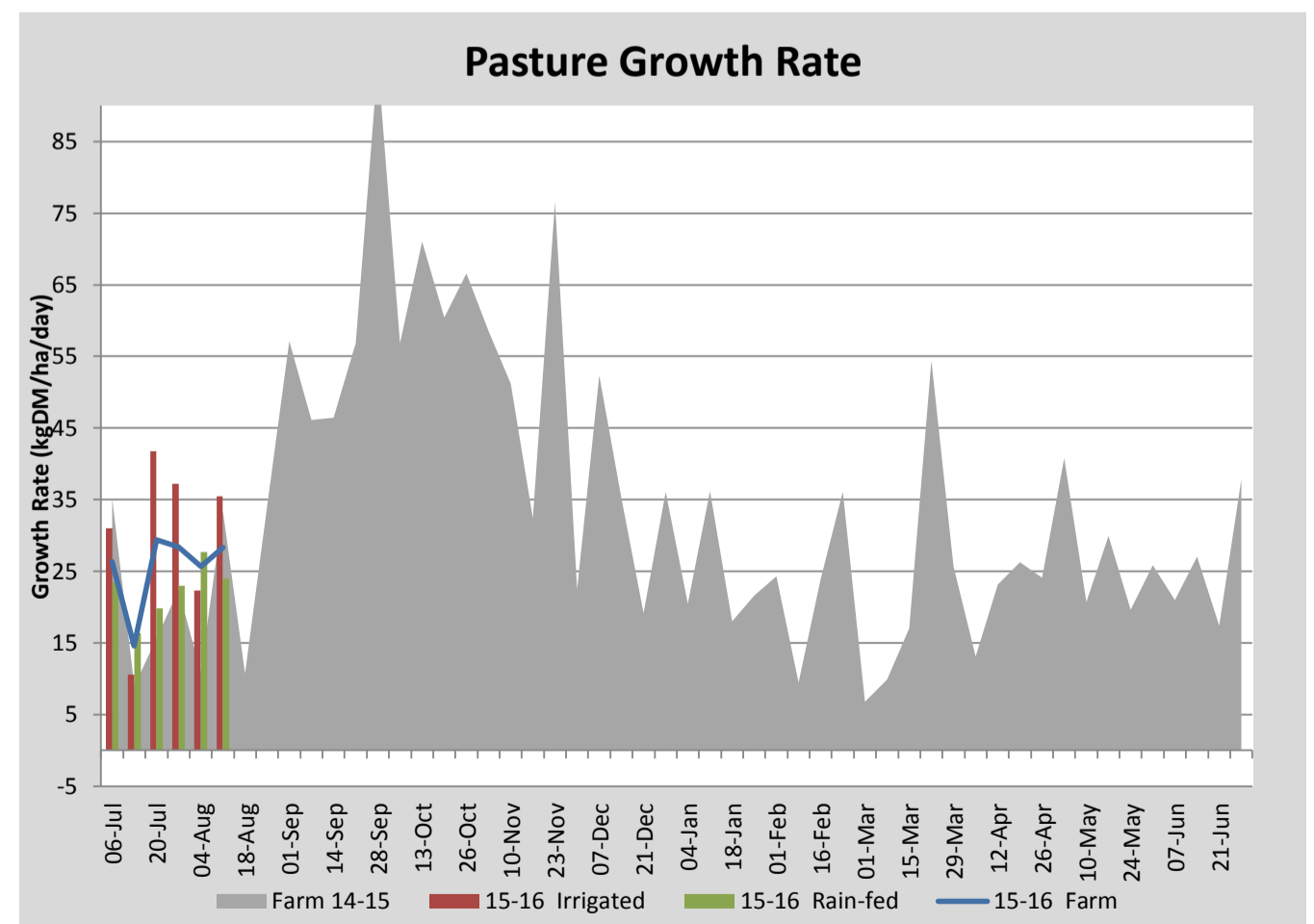
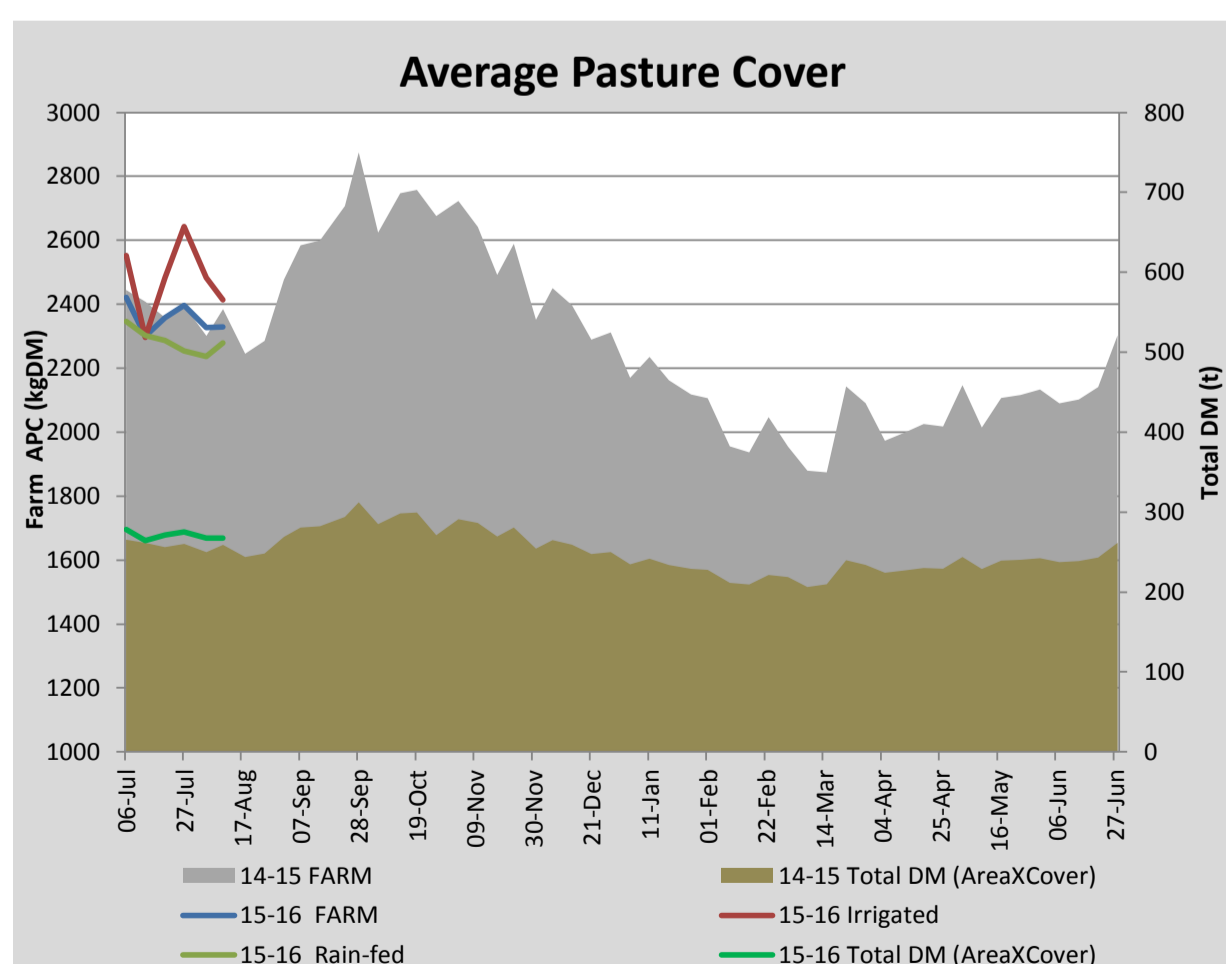
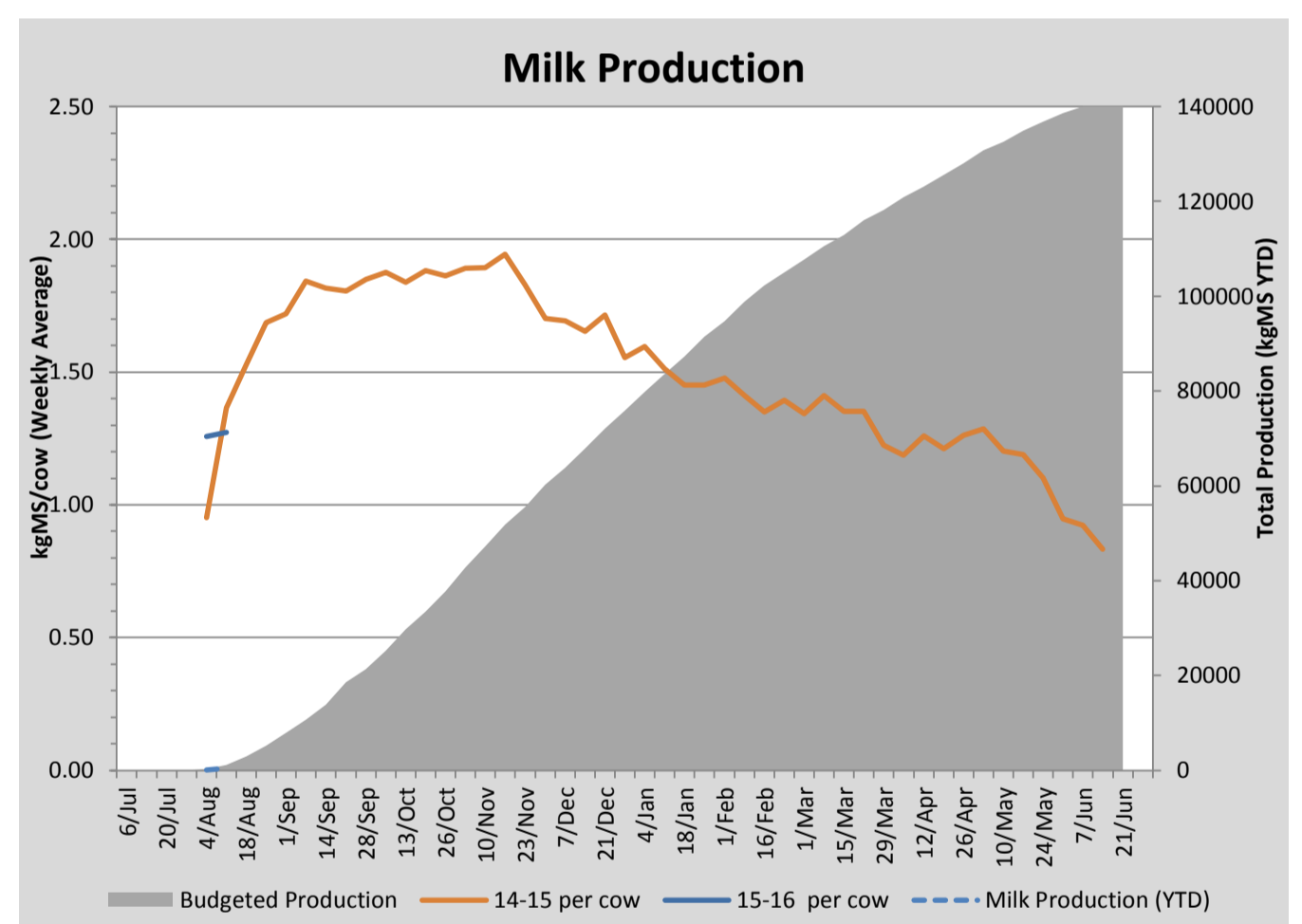
Key Summary Points

- 1 Average pasture cover held this week at 2328kgDM/ha with good growth rates observed across the milking platform.
- 2 Calving is progressing well with 91 cows calved to date.
- 3 The focus for the coming week is to monitor cow health (mastitis, calving) and to hold the grazing rotation at 60 days while ensuring that milking cows are being fully fed (19kgDM/cow/day)

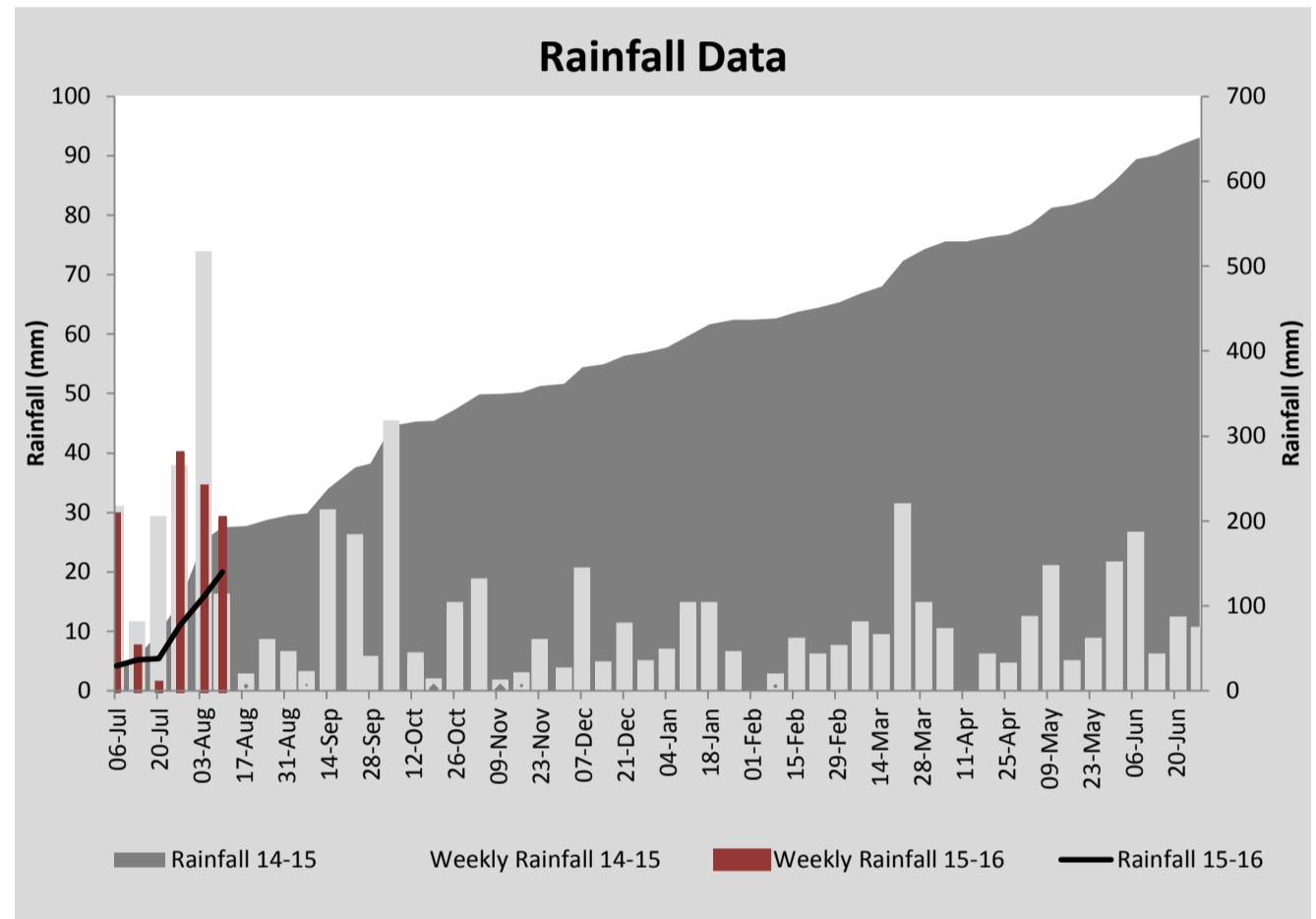
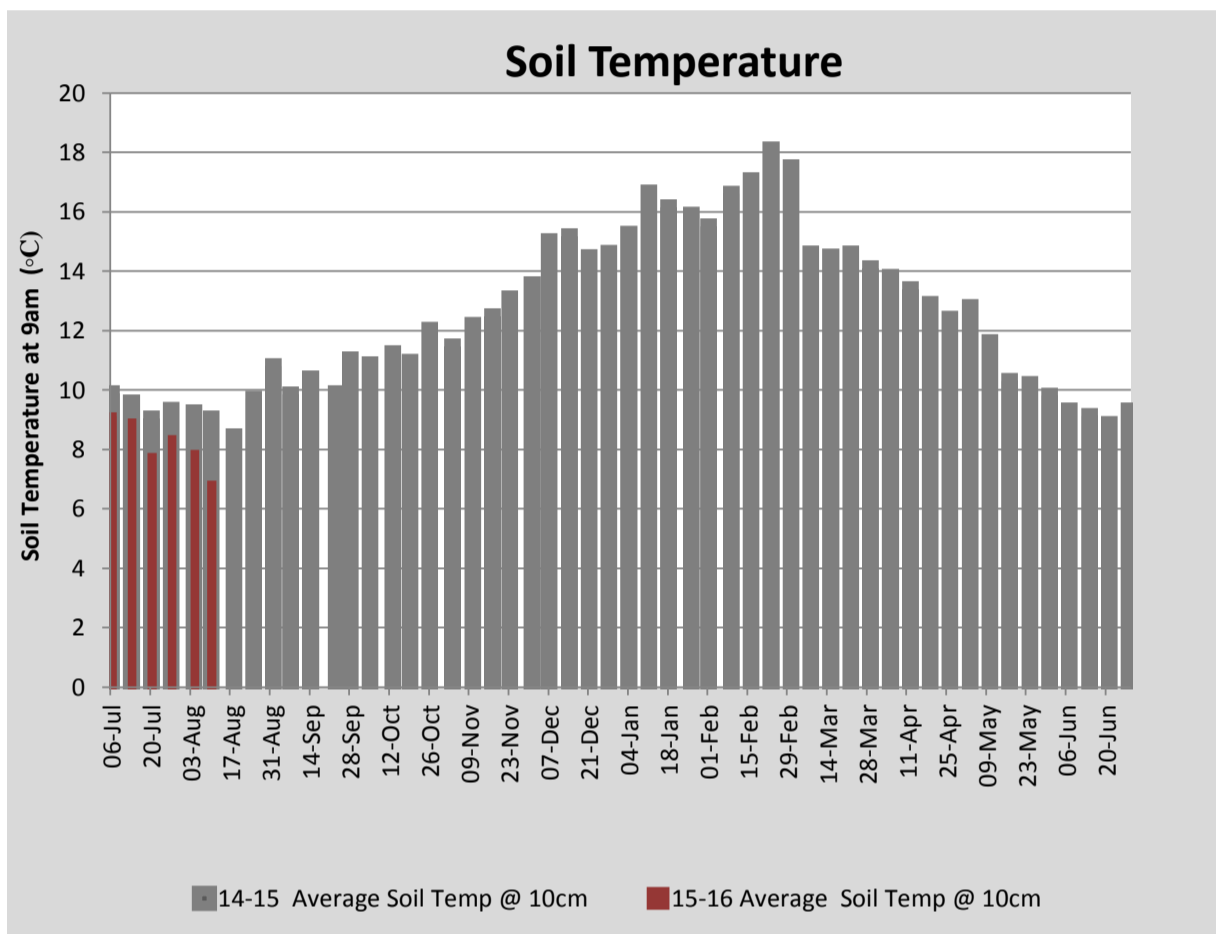
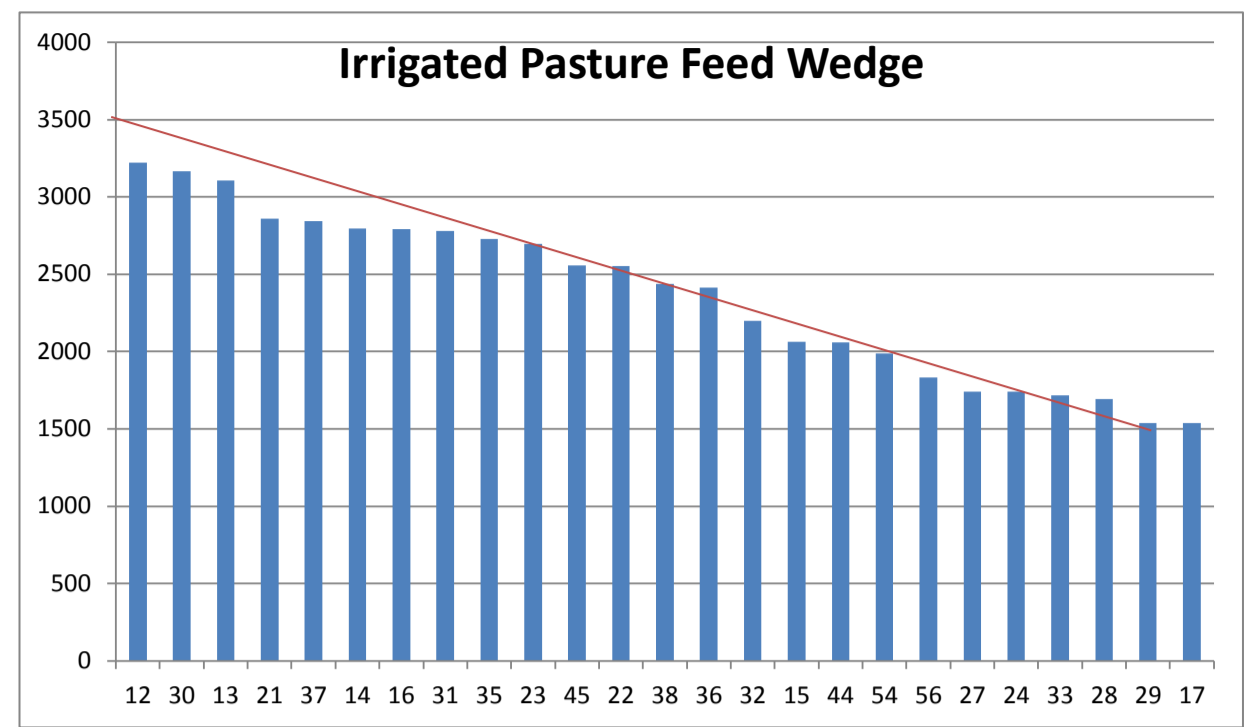
PASTURE INFORMATION	Farm			Irrigated			Rain-fed		
	Last Week	This Week	Variation	Last Week	This Week	Variation	Last Week	This Week	Variation
Grazed milking area (ha)	115.0	115.0	0.0	42.2	42.2	0.0	72.8	72.8	0
Rotation Length (days)	68	57	-11	53	46	-6	81	66	-15
Grazing allocation per day (ha)	1.7	2.0	0.3	0.8	0.9	0.1	0.9	1.1	0.2
Average time since last grazed (days)	93	90	-3	89	83	-6	95	94	-1
Leaf appearance rate (days per leaf)	17	17	0	17	17	0	17	17	0
Average Pasture Cover (kgDM/ha)	2327	2328	1	2483	2414	-69	2237	2278	41
Pasture Growth Rate (kgDM/ha/day)	26	28	3	22	35	13	28	24	-4
Post Grazing Biomass (kgDM/ha)	1558	1600	42						
Nitrogen applied YTD (kgN/ha)	10	10	0	0	0	0	0	0	0

*Please note all pasture calculations detailed above are based on the current Grazed Milking Area

MILK PRODUCTION	Last Week	This Week	Variation
Average No. cows in milk (vat)	20	41	21
Litres per cow	15.9	16.0	0.2
% Fat	4.13	4.06	-0.07
% Protein	4.00	3.86	-0.14
MS/cow/day	1.26	1.27	0.02
MS/ha/day	0.22	0.46	0.24
BMCC	134667	163000	28333
Average Liveweight (kg)	0	0	0
	Budget	To Date	Variation
Total Milk Production (kgMS)	1,144	444	39%
MS/ha YTD	10	4	-6



Last 7 days					
Milkers Diet	kg DM	MJ ME	CP (%)	NDF (%)	\$/cow
Pasture Intake	15.0	12.5	28.0	40.7	0.0
Concentrates	4.0	12.3	12.3	16.5	0.0
Silage	0.0	0.0	0.0	0.0	0.0
Grazed forage	0.0	0.0	0.0	0.0	0.0
Other feeds	0.0	0.0	0.0	0.0	0.0
Total	19	236.7	24.7	35.6	0
Target		191	16-18	>33	0



Analysis			
Expected growth rate next 7 days (kgDM/ha/day)	25	Target Leaf Grazing Stage	2.5-3.0
Total Demand from Pasture (kgDM/ha/day)	28	Predicted APC 7 days time	2310
APC balance (kgDM/ha/day)	-3	Predicted APC Change	-18.6

Discussion

Good growth rates across the milking platform have seen average pasture cover hold at 2328kgDM/ha/day this week. Wet conditions this week resulted in pasture damage in some paddocks. To manage this we have been standing the cows off on the yard for longer during the morning prior to lead feeding through the shed. To date 91 cows have calved. The springer mob is currently split into 2 mobs of 60. This has made monitoring calving and matching calves much simpler and has also allowed us to test the efficacy of plantain as a low DCAD pre calving feed. One mob is grazing plantain supplemented with hay and the other is being allocated pasture dusted with causmag and 3kg lead feed pellets. Dry cows are grazing the milking platform and are receiving 13kgDM/cow/day (4kgDM hay/barley straw, 3kg lead feed pellets, 6kgDM pasture). Calves are being collected 3 times a day and are all tube fed 2L colostrum on arrival at the shed. Heifer calves are being reared on four automatic calf feeders and all Friesian bull and beef cross calves are being reared conventionally in a separate shed and will be sold as weaners. The focus for the coming week is hold the grazing rotation at 60 days while ensuring that the milkers are full fed at 19kgDM/cow/day. Dry cows will be used to tidy up residuals behind the milkers if required.

10 August 2015

