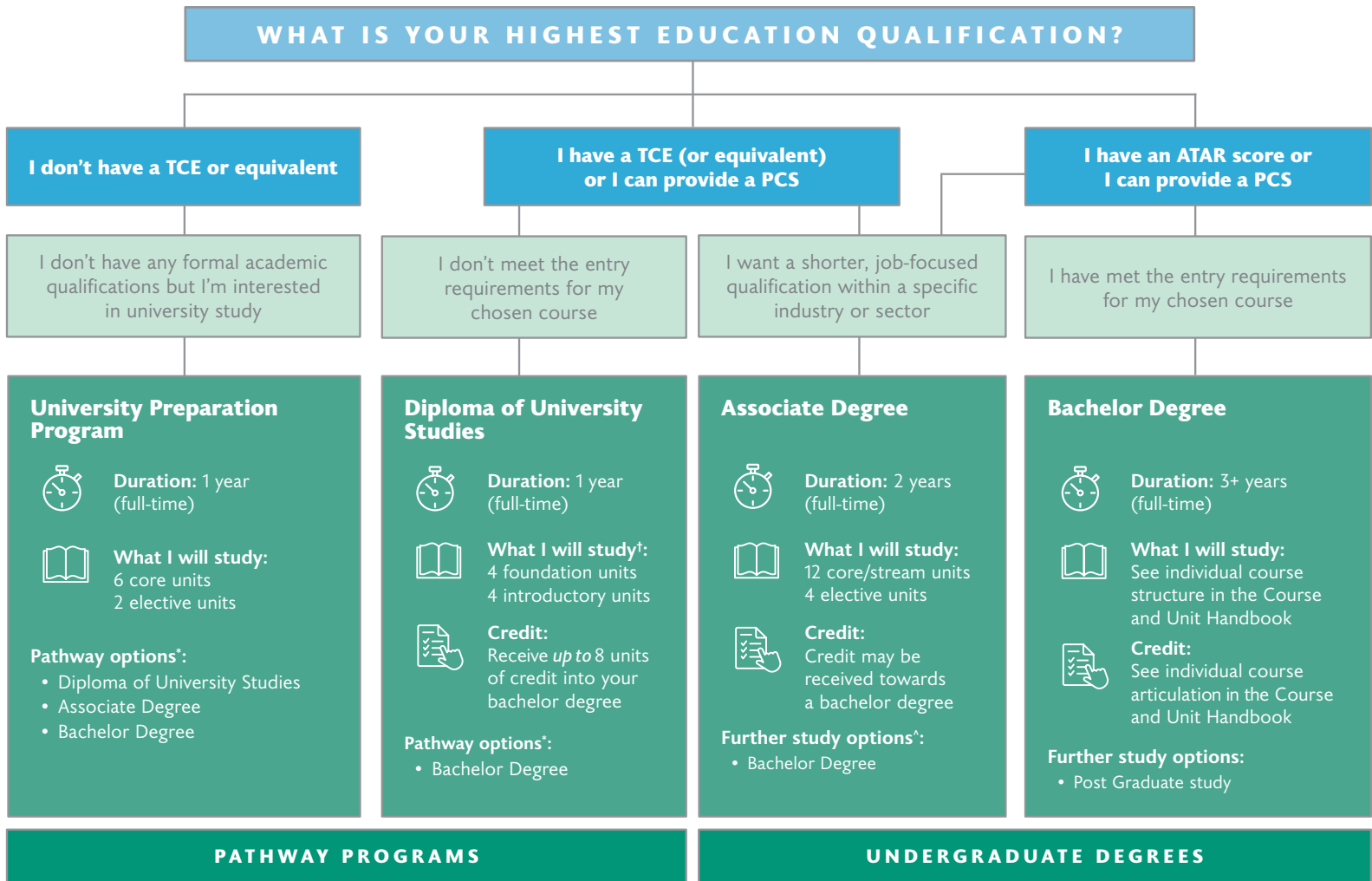


All roads lead to the University of Tasmania



UNIVERSITY TERMS EXPLAINED

Tasmania Certificate of Education (TCE)

The TCE is available to Tasmanians who reach a set of prescribed standards; usually by completing Year 11 and 12.

Australian Tertiary Admission Rank (ATAR)

The ATAR score indicates a student's position relative to all the students in their age group. Universities use the ATAR to help them select students for their courses and admission to most tertiary courses is based on your selection rank.

Personal Competency Statement (PCS)

A personal competency statement allows applicants without any formal academic qualifications to meet the University's General Entry Requirements by demonstrating that they have, through life experiences, the skills and abilities to be successful in a tertiary course.

Core & Elective units

Cores are prescribed units of study that you must undertake to complete your qualification. Electives are those that can be chosen from a range of available units.

Foundation units

Foundation units allow students the opportunity to develop necessary skills and knowledge required for studying units at a higher level.

Credit (advanced standing):

This provides recognition of completed study at another institution or in another course at the University of Tasmania. This can count toward the requirements of your current course. The credit granted may be 'specified', i.e., granted for a particular unit, or 'unspecified'. This is also referred to as Recognition of Prior Learning (RPL).

*Individual course entry requirements may apply.

^Credit may be granted towards a Bachelor Degree on a case by case basis.

!You may study more introductory units in some pathways.

PATHWAY PROGRAMS

UNDERGRADUATE DEGREES

Find out more utas.edu.au/study