

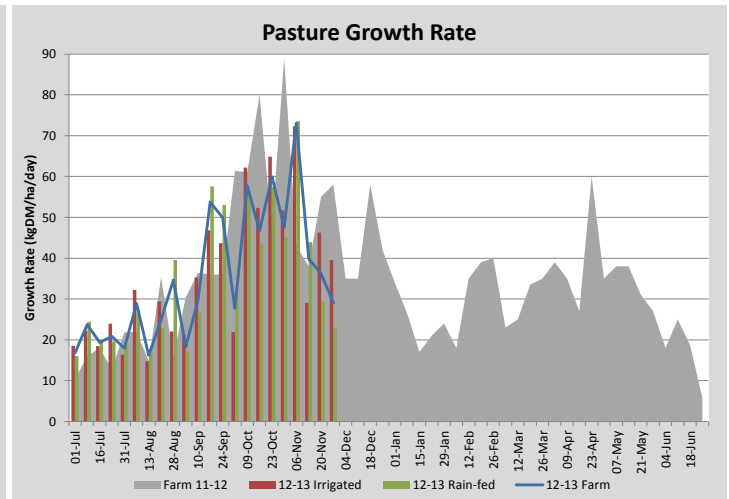
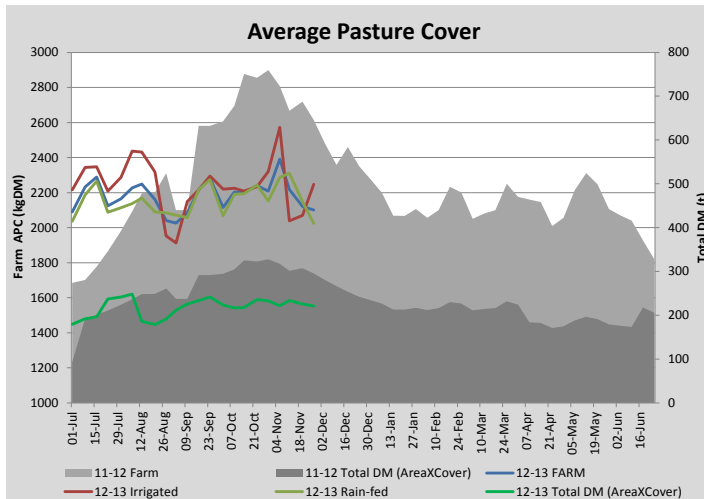
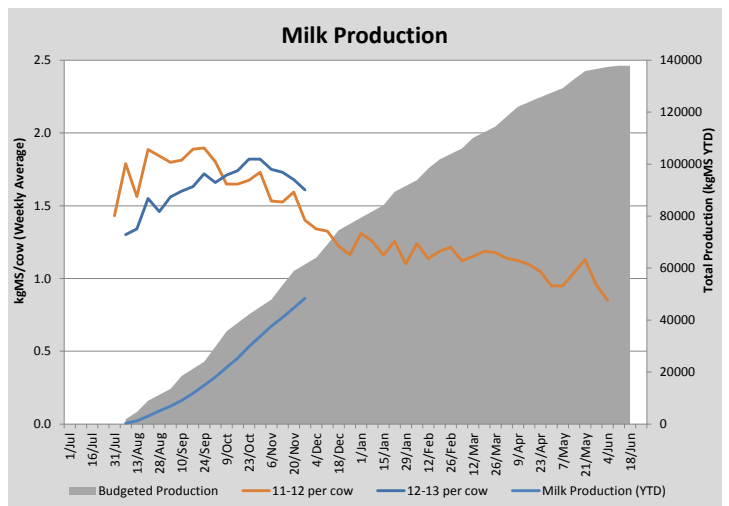
Key Summary Points

- Growth rates from irrigated pastures are being held back by short term ryegrass (Italian) cultivars pre-maturely dying off
- Milk production continues to decline as cows progress further into their lactation and feed quality drops. We are 5% up on total production from this time last year.
- Key focus this week is maintaining rotation length at an average of over 60 days for rain-fed pastures and 25 days for irrigated.

PASTURE INFORMATION	Farm			Irrigated			Rain-fed		
	Last Week	This Week	Variation	Last Week	This Week	Variation	Last Week	This Week	Variation
Grazed milking area (ha)	106.3	105.4	1.0	35.9	35.9	0.00	70.4	69.5	0.95
Rotation Length (days)	35	46		24	45		47	46	
Grazing allocation per day (ha)	3.0	2.3	0.70	1.5	0.8	0.70	1.5	1.5	0.00
Average time since last grazed (days)	32	38	7	25	25	0	35	45	10
Leaf appearance rate (days per leaf)	13	13	-0	10	10	0	15	15	0
Average Pasture Cover (kgDM/ha)	2121	2100	-21	2069	2248	178	2148	2024	-124
Pasture Growth Rate (kgDM/ha/day)	36	29	-7	46	40	-7	29	23	-7
Post Grazing Biomass (kgDM/ha)	1500	1550	50						
Nitrogen applied YTD (kgN/ha)	123	140	18	0	18	18	0	0	0

*Please note all pasture calculations detailed above are based on the current Grazed Milking Area

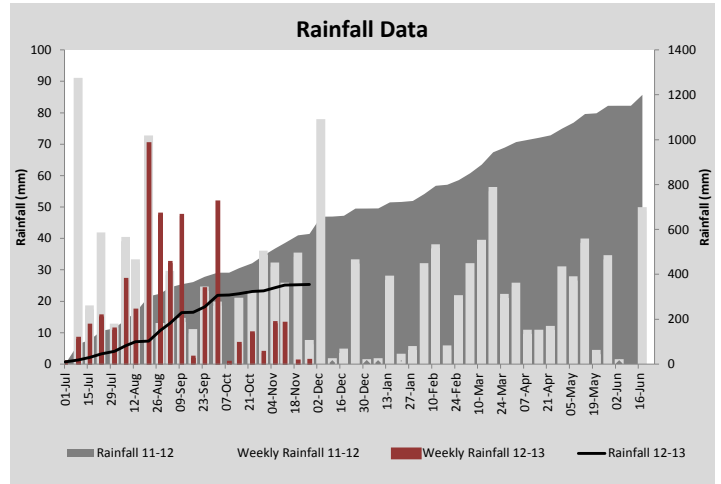
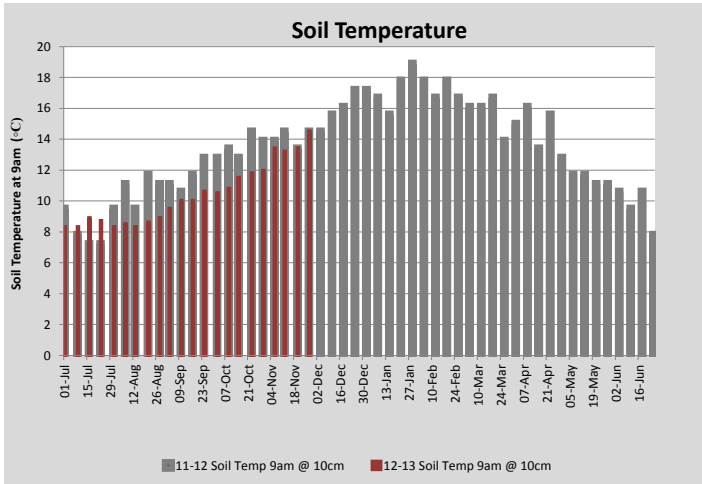
MILK PRODUCTION	Last Week	This Week	Variation
No cows in milk (vat)	330	334	4.00
Litres per cow	23.6	22.8	0.80
% Fat	4.03	3.96	0.07
% Protein	3.10	3.10	0.00
MS/cow/day	1.68	1.61	0.07
MS/ha/day	4.86	4.59	0.27
BMCC	213	184	29.00
Average Liveweight (kg)			
	Budget	To Date	Variation
Total Milk Production (kgMS)	61438	48299.00	79%
MS/ha YTD	549	431	-117



Last 7 days					
Milkers Diet	kg DM	ME	CP	NDF	\$/cow
Pasture Intake	10.5	11.5	0.0	0.0	0.0
Concentrates	4.0	12.0	0.0	0.0	0.0
Silage	3.5	10.0	0.0	0.0	0.0
Grazed forage	0.0	0.0	0.0	0.0	0.0
Other feeds	0.0	0.0	0.0	0.0	0.0
Total	18	203.8	0	0	0
Target	18		0	0	0



Feed Wedge this time last year as a comparison of difference in seasons



Analysis			
Expected growth rate next 7 days (kgDM/ha/day)	35	Target Leaf Grazing Stage	3.0
Total Demand from Pasture (kgDM/ha/day)	31	Predicted APC 7 days time	2126
APC balance (kgDM/ha/day)	4	Predicted APC Change	25.8

Discussion

We held a longer rotation on both the rain-fed and irrigated pastures the last 7 days to allow an irrigated feed wedge to build up and help fill the approaching 'gap' in the overall farm wedge. This has worked well (average cover on irrigated pastures climbed by over 150kgDM/ha) however our lower than expected growth rates means an approaching feed deficit still remains in the feed wedge. Over the next few weeks we will maintain a 60 day or greater rotation on the rain-fed part of the farm and aim for an average 25 day rotation on irrigated pastures. Almost 8ha under the centre pivot is planted in a short rotation 'Italian' ryegrass cultivar. This was originally sown 18 months ago and then under-sown last autumn. These paddocks grew extremely well in early spring however during the last two weeks as they have turned reproductive their growth/plant density has dropped back considerably. We have already under-sown the worst one of these paddocks with an annual ryegrass (will be sprayed out and re-sown to perennial in the autumn) and will monitor the others closely to determine whether to do the same to ensure we maximise irrigated feed available during summer. Milk production continues to decline gradually due to stage of lactation and a drop in feed quality due to plants entering reproductive phase. We remain 20% behind our original target milk budget but are 5% up on total production at this time last year.

27 November 2012

