

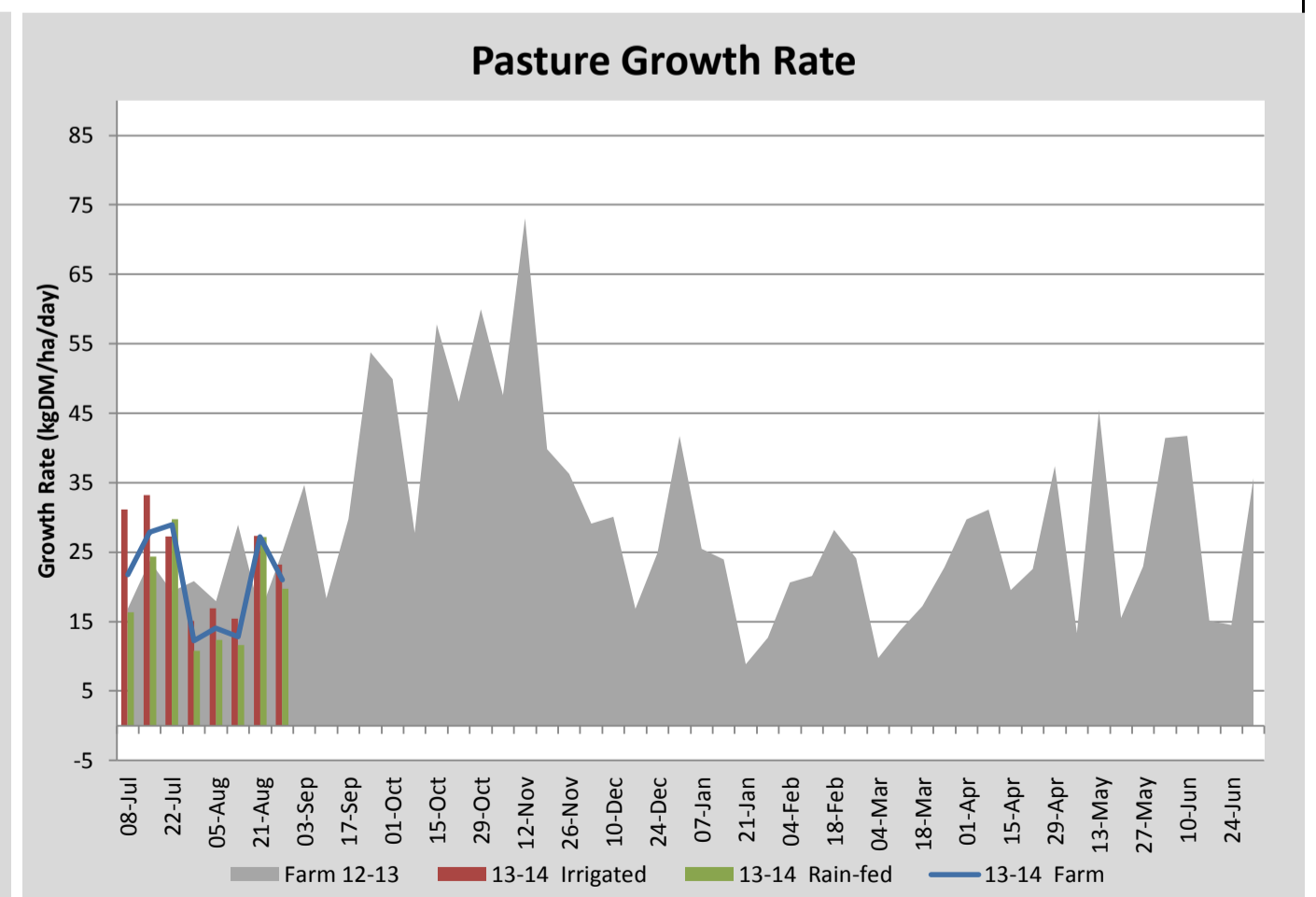
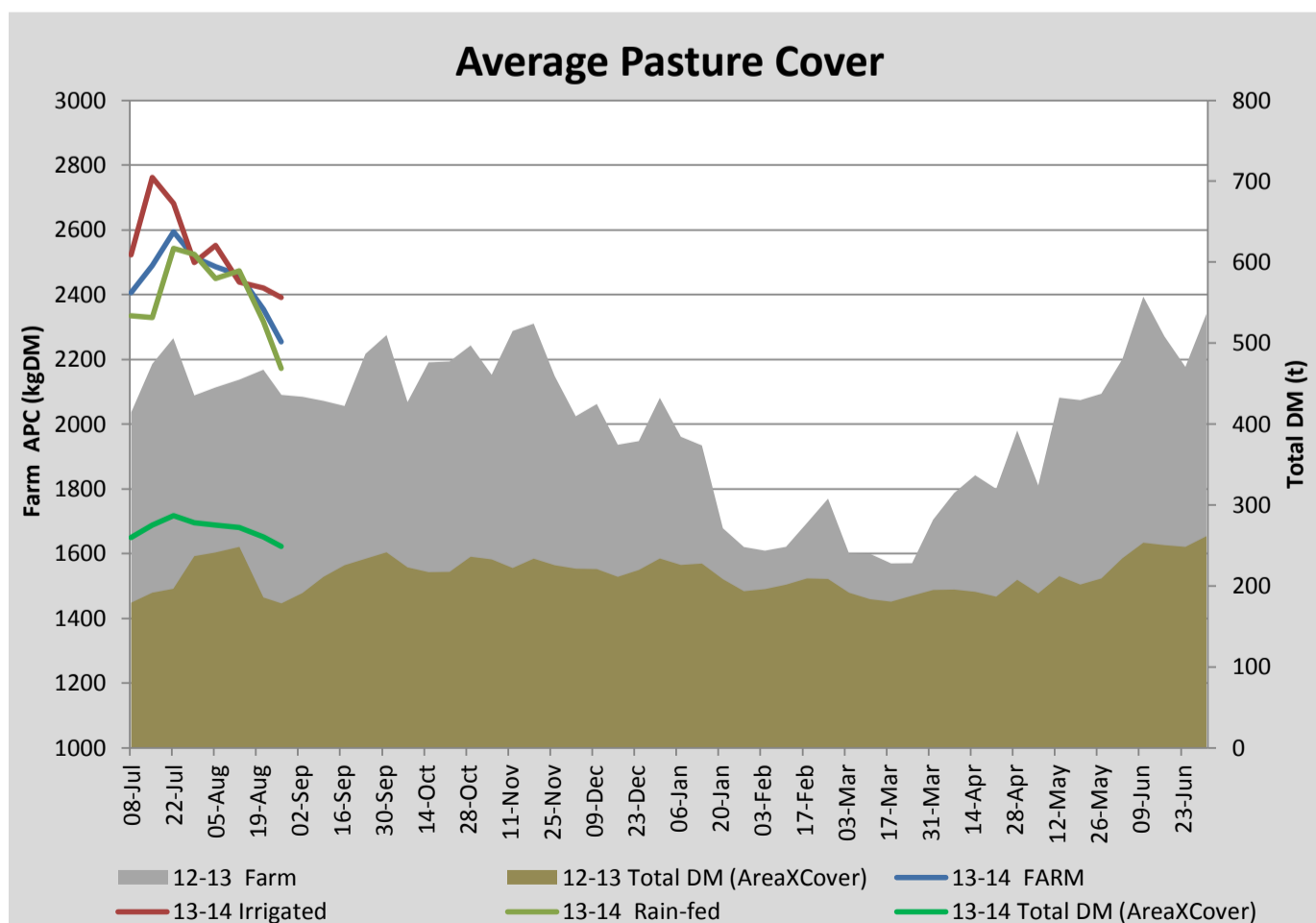
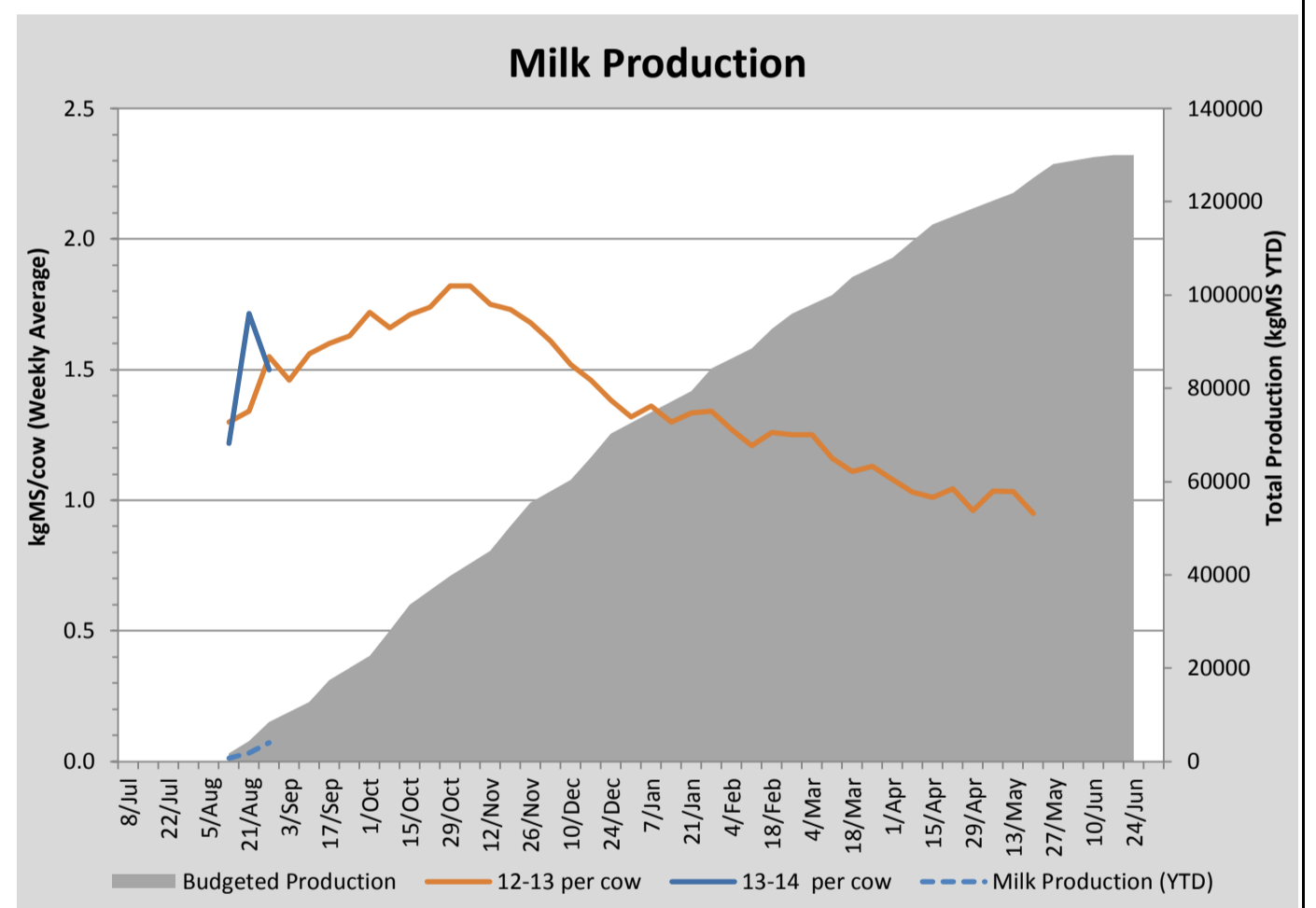
Key Summary Points

- 1** A slight increase in allocation this week as more cows enter the herd
- 2** Rotation will be targeted towards 45days over the coming week
- 3** BMCC count has declined this week and we will continue to focus on early identification of mastitis

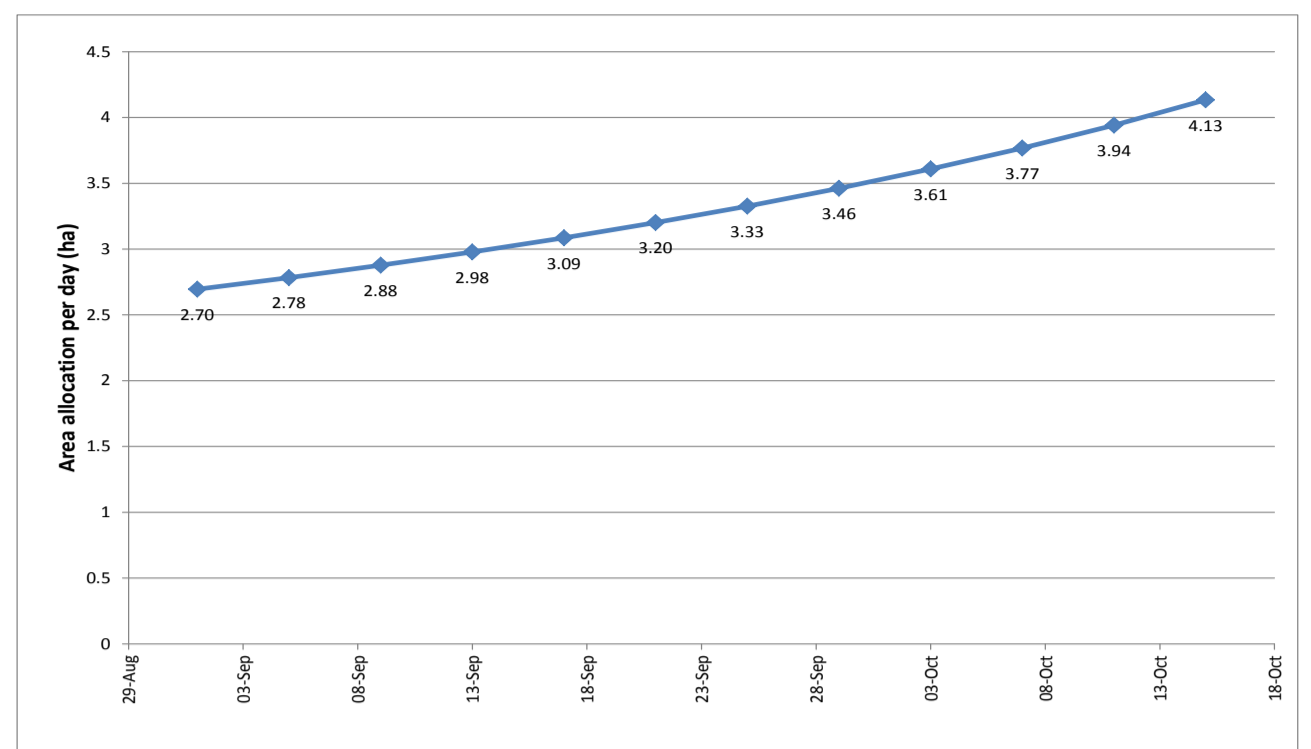
PASTURE INFORMATION	Farm			Irrigated			Rain-fed		
	Last Week	This Week	Variation	Last Week	This Week	Variation	Last Week	This Week	Variation
Grazed milking area (ha)	110.5	110.5	0.0	41.0	41.0	0.00	69.5	69.5	0.00
Rotation Length (days)	107	92	15	164	103	-62	89	87	-2
Grazing allocation per day (ha)	1.0	1.2	0.17	0.3	0.4	0.15	0.8	0.8	0.02
Average time since last grazed (days)	116	80	-36	118	80	-38	115	80	-35
Leaf appearance rate (days per leaf)	17	16	-1	17	16	-1	17	16	-1
Average Pasture Cover (kgDM/ha)	2355	2253	-102	2420	2391	-29	2317	2172	-145
Pasture Growth Rate (kgDM/ha/day)	27	21	-6	27	23	-4	27	20	-7
Post Grazing Biomass (kgDM/ha)	1540	1500	-40						
Nitrogen applied YTD (kgN/ha)	0	0	0	0	0	0	0	0	0

*Please note all pasture calculations detailed above are based on the current Grazed Milking Area

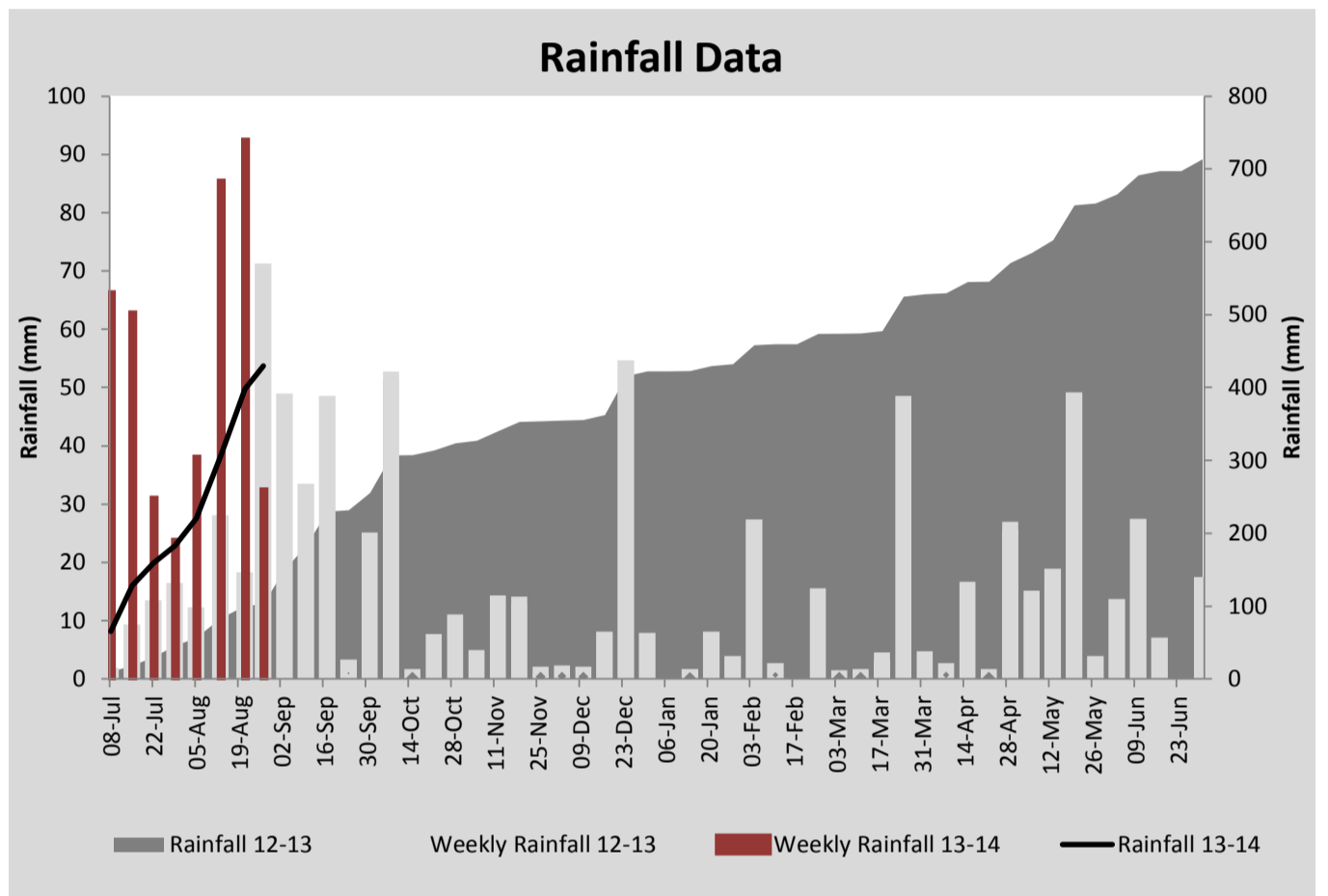
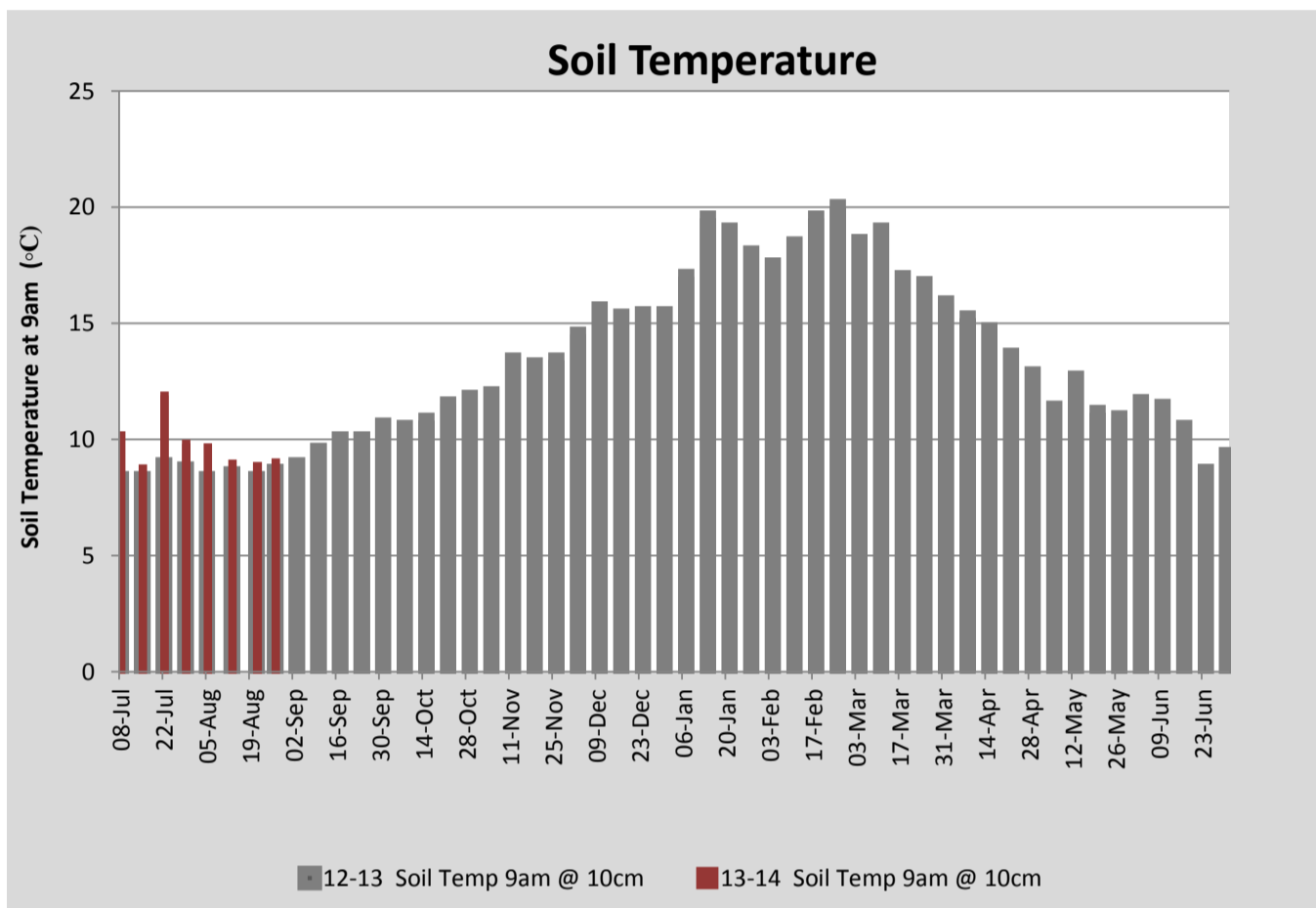
MILK PRODUCTION	Last Week	This Week	Variation
No cows in milk (vat)	129	183	54.00
Litres per cow	21.5	20.9	0.63
% Fat	4.64	4.29	0.35
% Protein	3.32	3.21	0.11
MS/cow/day	1.71	1.50	0.21
MS/ha/day	1.96	2.33	0.37
BMCC	384	194	190.00
Average Liveweight (kg)			
	Budget	To Date	Variation
Total Milk Production (kgMS)	8447	4007	47%
MS/ha YTD	75	32	-43



Last 7 days					
Milkers Diet	kg DM	ME	CP	NDF	\$/cow
Pasture Intake	12.0	11.5	0.0	0.0	0.0
Concentrates	4.0	12.0	0.0	0.0	0.0
Silage	0.0	0.0	0.0	0.0	0.0
Grazed forage	0.0	0.0	0.0	0.0	0.0
Other feeds	0.0	0.0	0.0	0.0	0.0
Total	16	186	0	0	0
Target	16		0	0	0



Daily area allocation forecast for the milking platform



Analysis			
Expected growth rate next 7 days (kgDM/ha/day)	20	Target Leaf Grazing Stage	3.0
Total Demand from Pasture (kgDM/ha/day)	26	Predicted APC 7 days time	2212
APC balance (kgDM/ha/day)	-6	Predicted APC Change	-41.4

Discussion

A slight reprieve in the wet weather at the start of the week has been most welcomed. BMCC has declined following a spike the previous week and we will continue to implement the management practices that were discussed in last week's report. Milk production dipped slightly this week due to more fresh cows entering the herd. We will increase our allocation to 2.4ha this coming week (rotation of 45days). With increasing cows in milk and a quickening of leaf appearance rate we have forecast the required daily area allocation over the next two months which is shown in the graph above. Average pasture cover has declined from last week, which is expected at this time of the year, with pasture demand being greater than pasture growth rates. Although a feed pinch is always expected late August/early September the total DM on the farm (260t DM), calculated as average cover (2355 kg DM/ha) x area (110ha), is still slightly slight up from this time last year. This is providing us with some buffer against the predicted feed pinch. No nitrogen has been applied to date but will start following the cows with 30kg N/ha in the coming weeks to boost growth rates. With an allocation of 2.4ha/day, a predicted growth rate of 20kg DM/ha/day and the predicted feed wedge on target, cows will be provided with a pasture allocation of 15 kg DM. The cows will continue to get 4kg of concentrate in the bail. Pasture residuals will be monitored and maintained through sending some cows back to clean or following with later cows if required.

27 August 2013

