

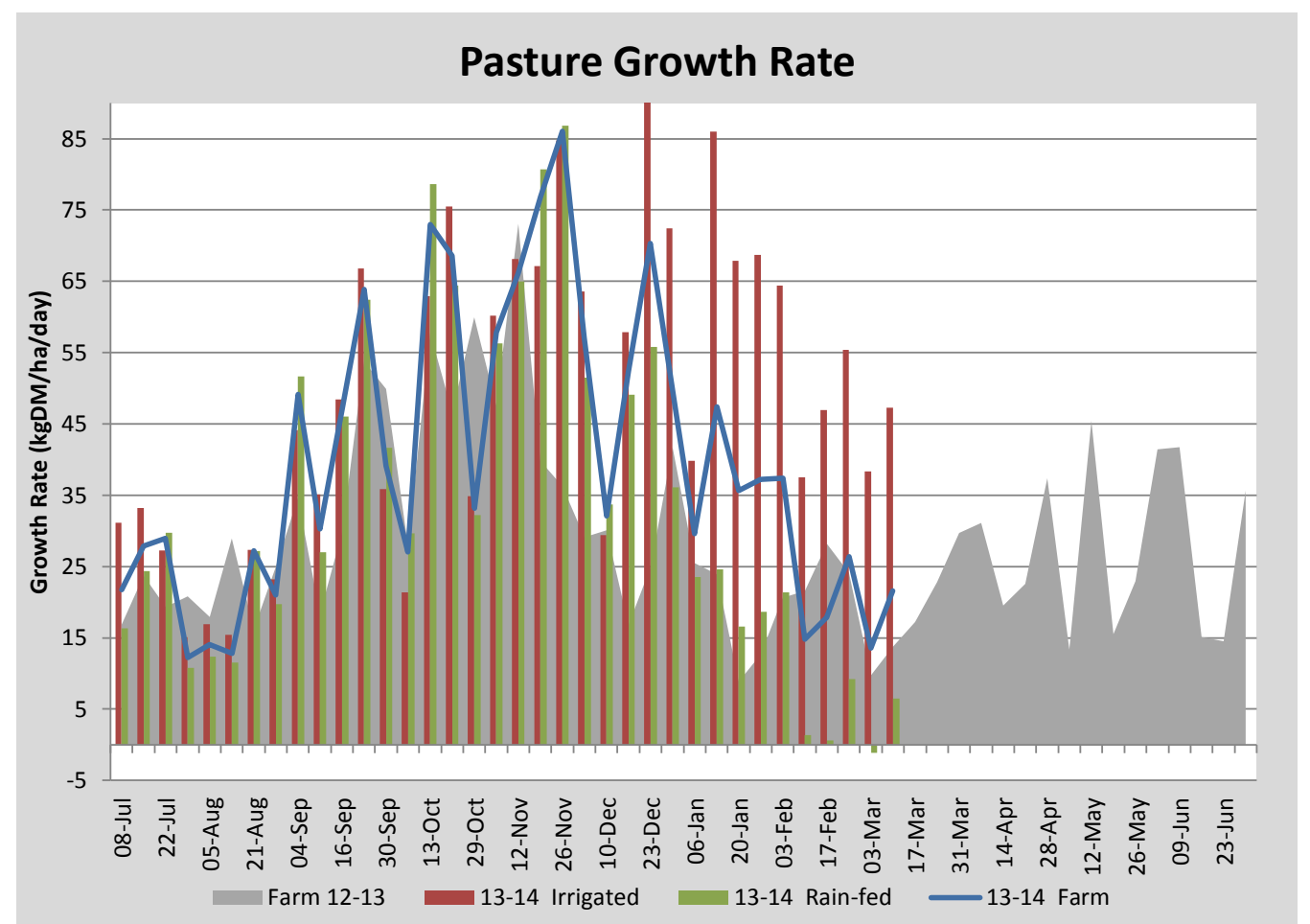
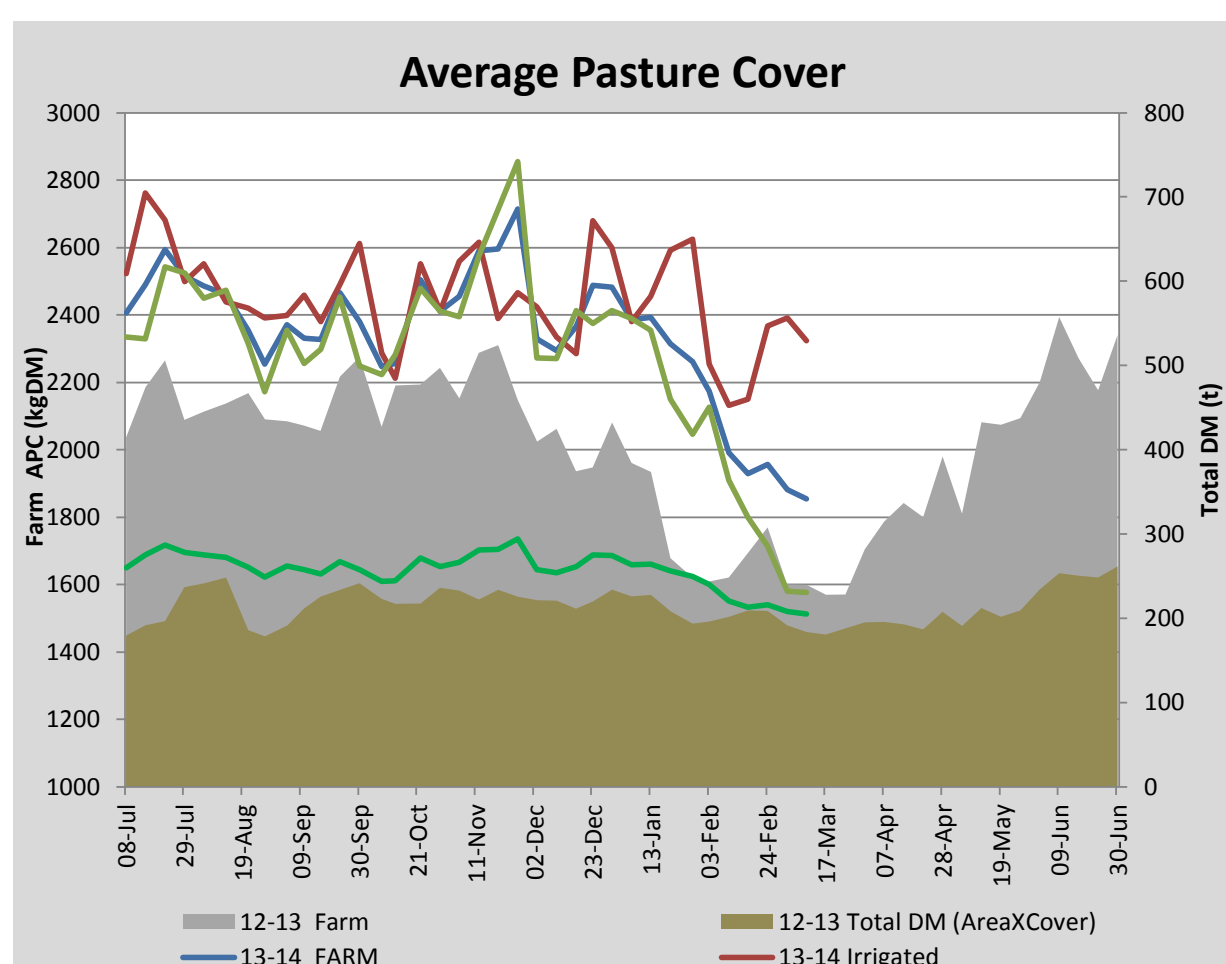
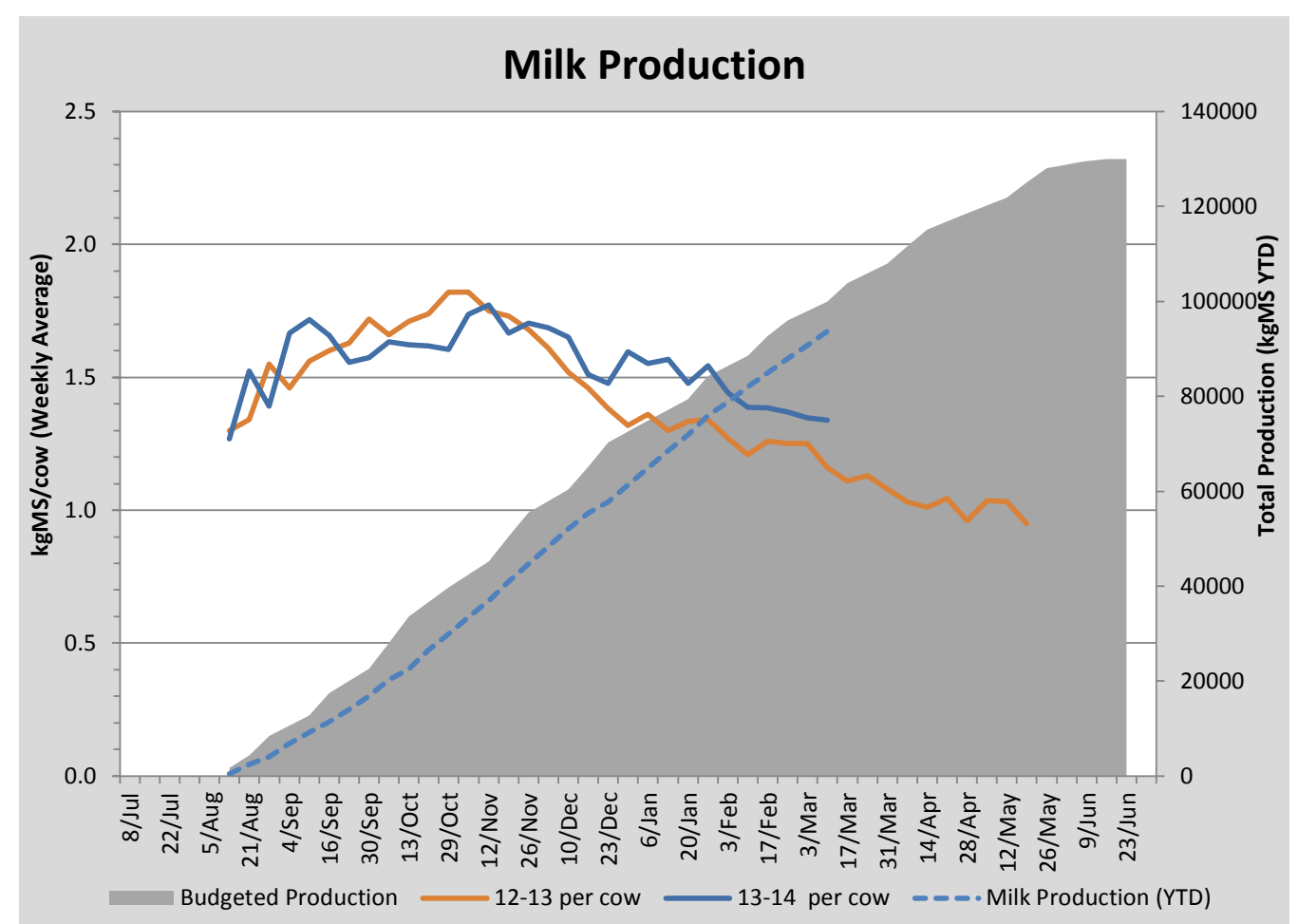
## Key Summary Points

- 1 Average pasture cover (farm) dropped slightly this week with a fall in APC on the irrigated area of the platform. Cover held on the rainfed area of the platform.
- 2 Per cow milk solid production is holding at 1.34kgMS/cow/day.
- 3 R1 and R2 heifers were weighed this week and are on target, averaging 160kg and 397kg respectively.

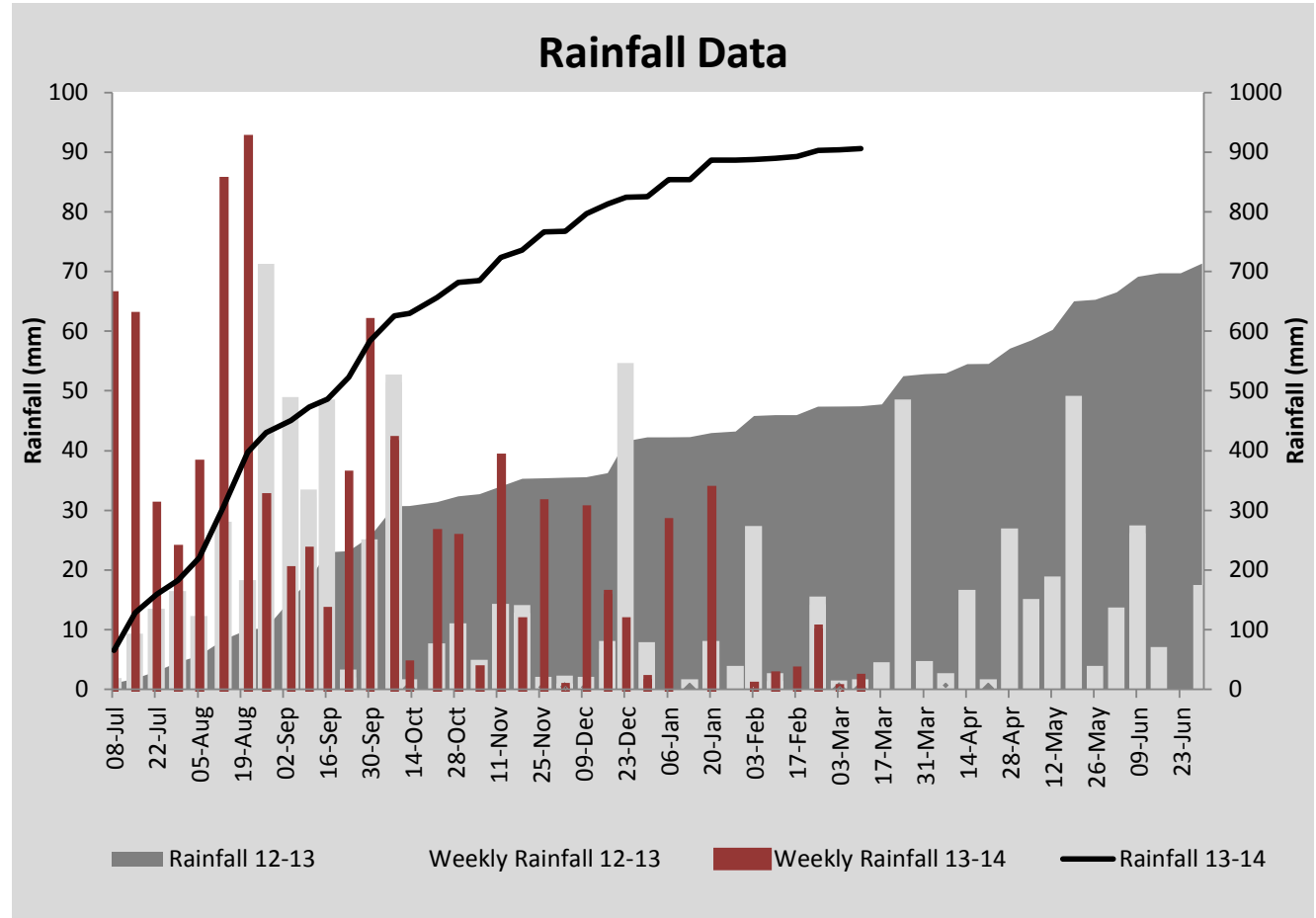
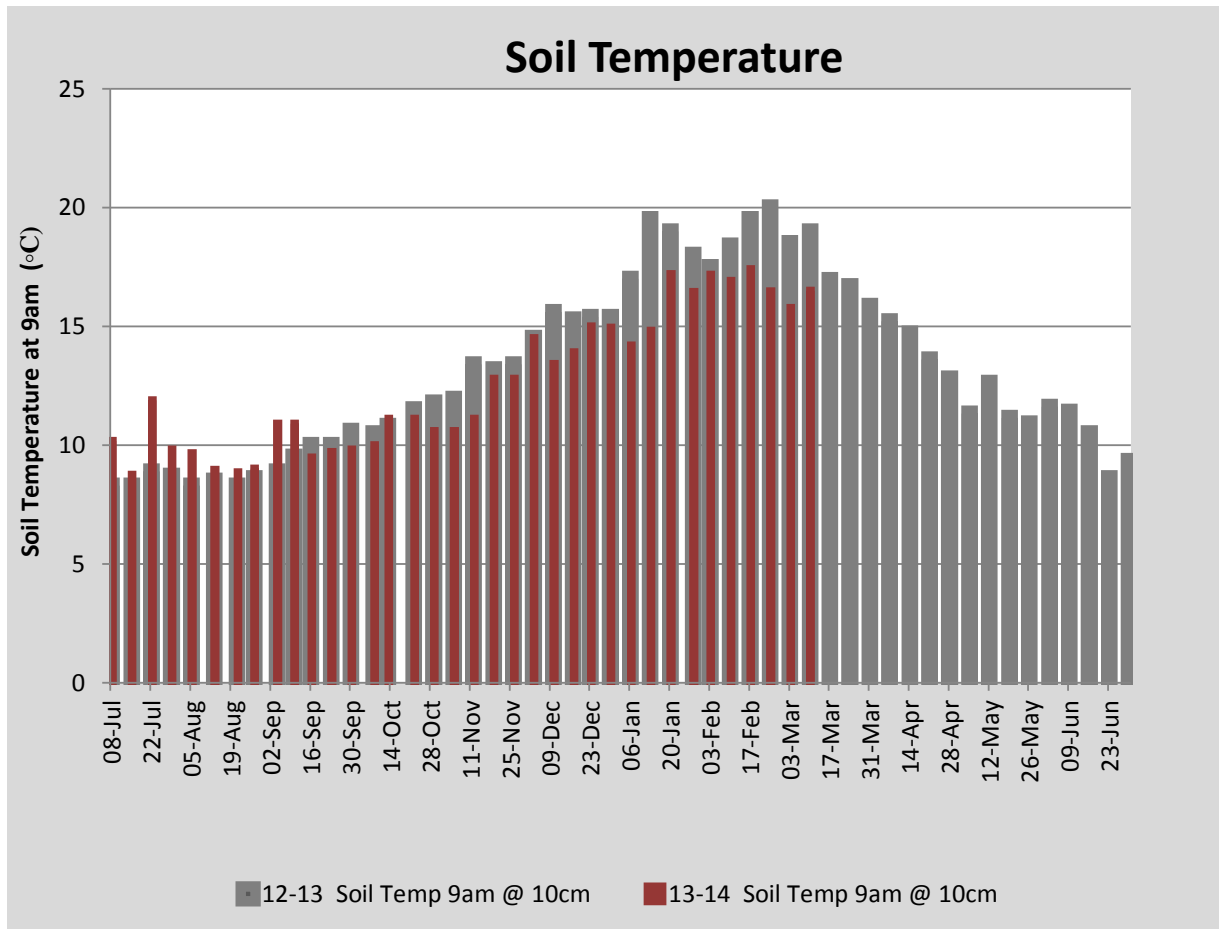
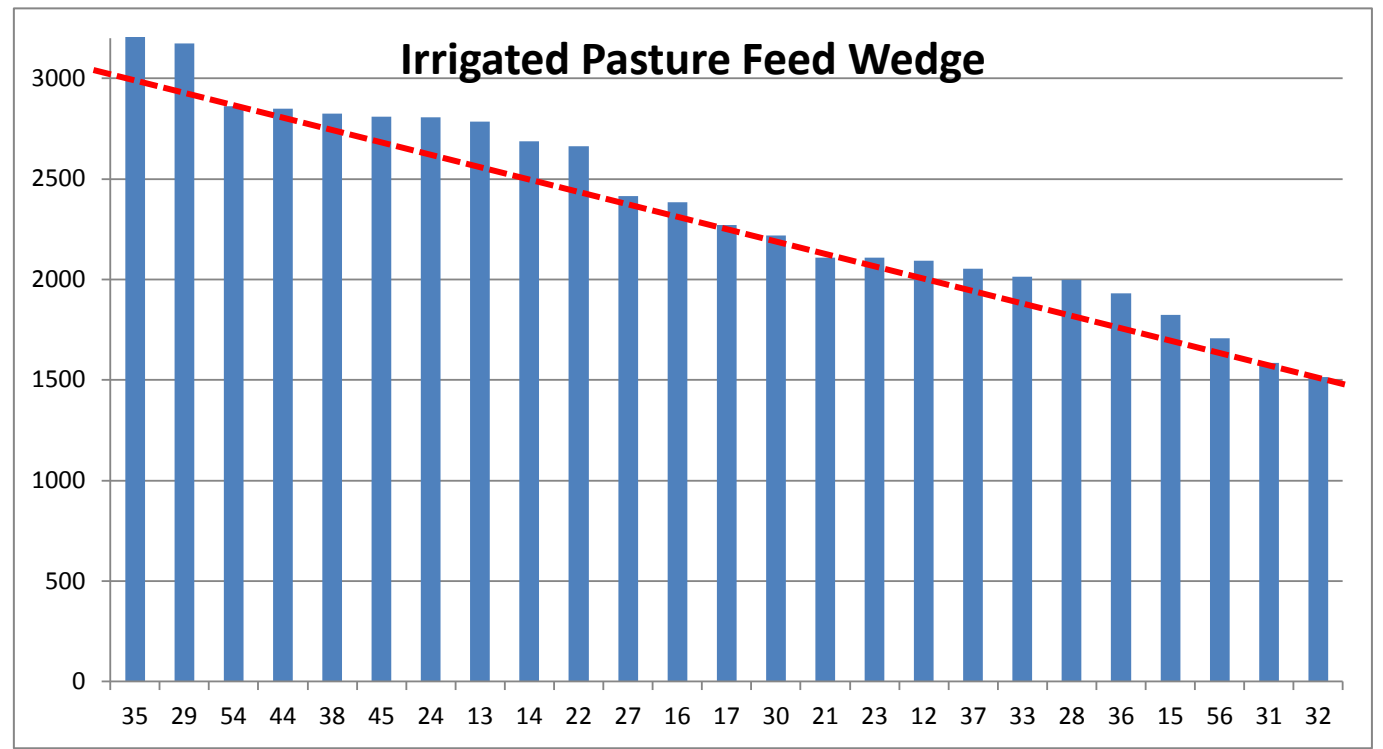
PASTURE INFORMATION	Farm			Irrigated			Rain-fed		
	Last Week	This Week	Variation	Last Week	This Week	Variation	Last Week	This Week	Variation
Grazed milking area (ha)	110.5	110.5	0.0	41.0	41.0	0.0	69.5	69.5	0
Rotation Length (days)	46	58	12	46	32	-14	46	116	69
Grazing allocation per day (ha)	2.4	1.9	-0.5	0.9	1.3	0.4	1.5	0.6	-0.9
Average time since last grazed (days)	43	38	-5	28	32	4	52	42	-11
Leaf appearance rate (days per leaf)	15	20	5	9	10	1	19	26	7
Average Pasture Cover (kgDM/ha)	1881	1854	-27	2391	2324	-67	1579	1577	-3
Pasture Growth Rate (kgDM/ha/day)	14	22	8	38	47	9	-1	6	8
Post Grazing Biomass (kgDM/ha)	1350	1357	7						
Nitrogen applied YTD (kgN/ha)	108	113	5	0	14	14	0	0	0

\*Please note all pasture calculations detailed above are based on the current Grazed Milking Area

MILK PRODUCTION	Last Week	This Week	Variation
Average No. cows in milk (vat)	305	305	0
Litres per cow	16.7	16.6	-0.1
% Fat	4.67	4.65	-0.02
% Protein	3.41	3.41	0.00
MS/cow/day	1.35	1.34	-0.01
MS/ha/day	3.64	3.61	-0.03
BMCC	158	129	-29
Average Liveweight (kg)	523	521	-2
	Budget	To Date	Variation
Total Milk Production (kgMS)	99,970	93,639	94%
MS/ha YTD	893	881	-12



Last 7 days					
Milkers Diet	kg DM	MJ ME	CP (%)	NDF (%)	\$/cow
Pasture Intake	7.8	11.2	17.7	52.2	0.0
Concentrates	5.0	13.0	11.0	21.0	0.0
Silage	3.7	10.5	15.0	49.0	0.0
Grazed forage	0.0	0.0	0.0	0.0	0.0
Other feeds	0.0	0.0	0.0	0.0	0.0
<b>Total</b>	<b>16.5</b>	<b>191.2</b>	<b>15.1</b>	<b>42.0</b>	<b>0</b>
<b>Target</b>		<b>191</b>	<b>16-18</b>	<b>&gt;33</b>	<b>0</b>



Analysis			
Expected growth rate next 7 days (kgDM/ha/day)	22	Target Leaf Grazing Stage	3.0
Total Demand from Pasture (kgDM/ha/day)	20	Predicted APC 7 days time	1867
APC balance (kgDM/ha/day)	2	Predicted APC Change	13.0

## Discussion

Average pasture cover decreased to 1854kgDM/ha this week. This is mainly due to increased demand on the irrigated portion of the milking platform and the resulting reduction in cover. Cover is holding on the rainfed portion of the platform and a small amount of growth has been recorded on some these paddocks. We aim to hold the rotation length on the rainfed paddocks above 120 days into the coming week. Urea was applied to 19.7ha of the irrigated portion of the platform at 65kg/ha (30kgN/ha). Dry matter allocation was dropped to 16.5kgDM/cow/day as we try to make the irrigated cover stretch a little further. R1 and R2 heifers were weighed this week. Lighter, late R1s were drafted off for sale this coming week, with 110 being retained. Both the retained R1 and R2 heifers are on target averaging 160kg and 397kg respectively.

# 10 March 2014

