

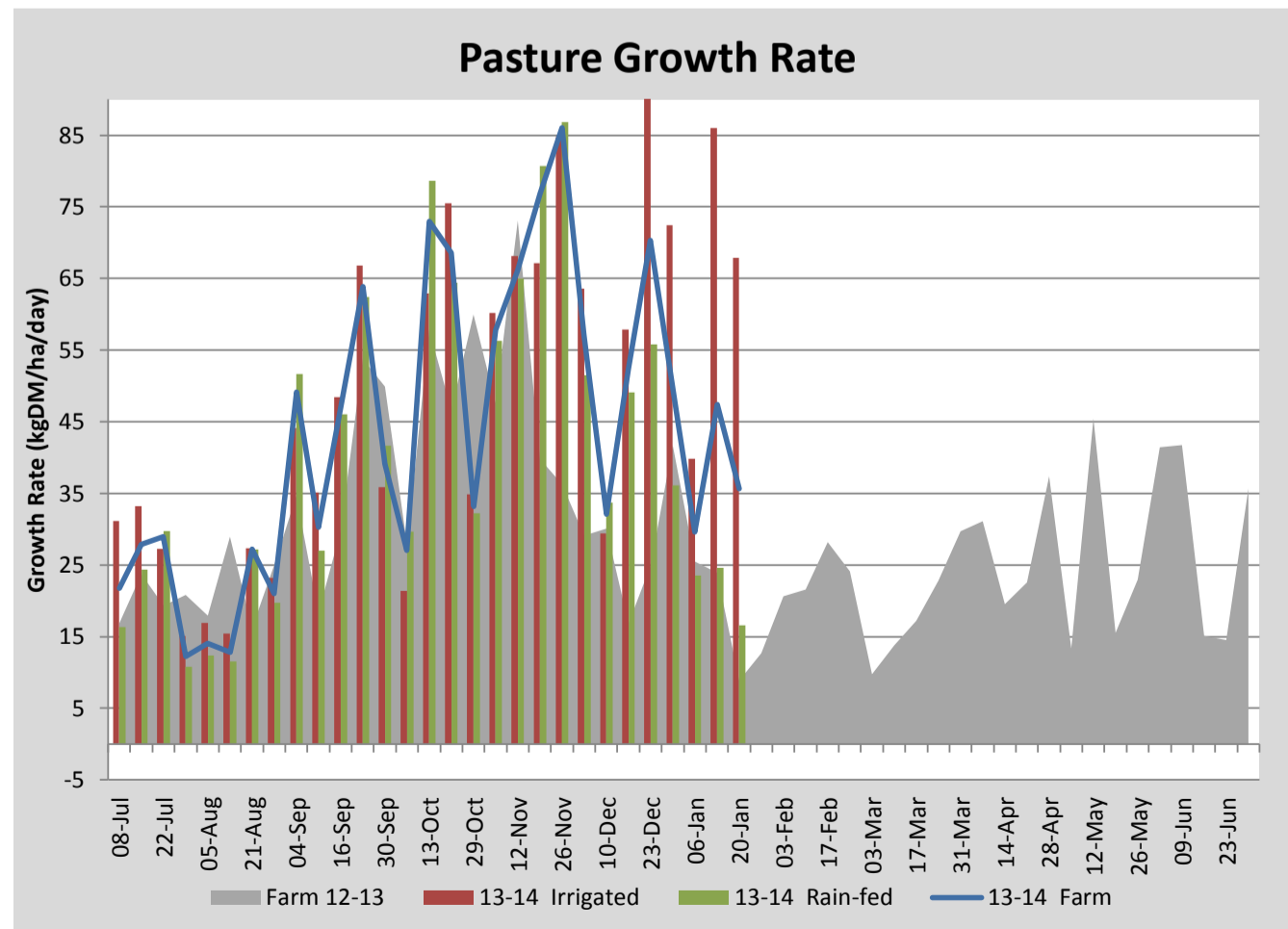
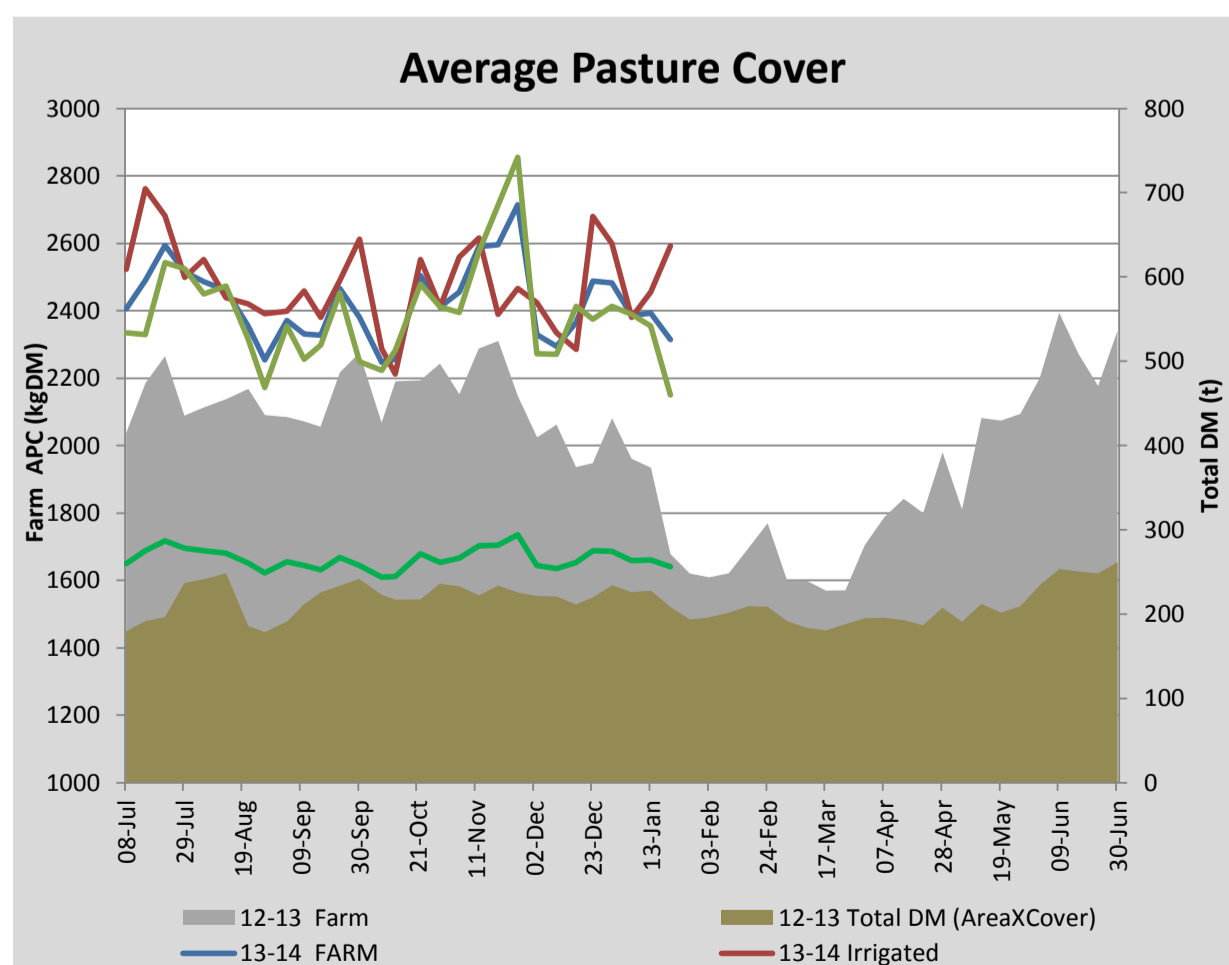
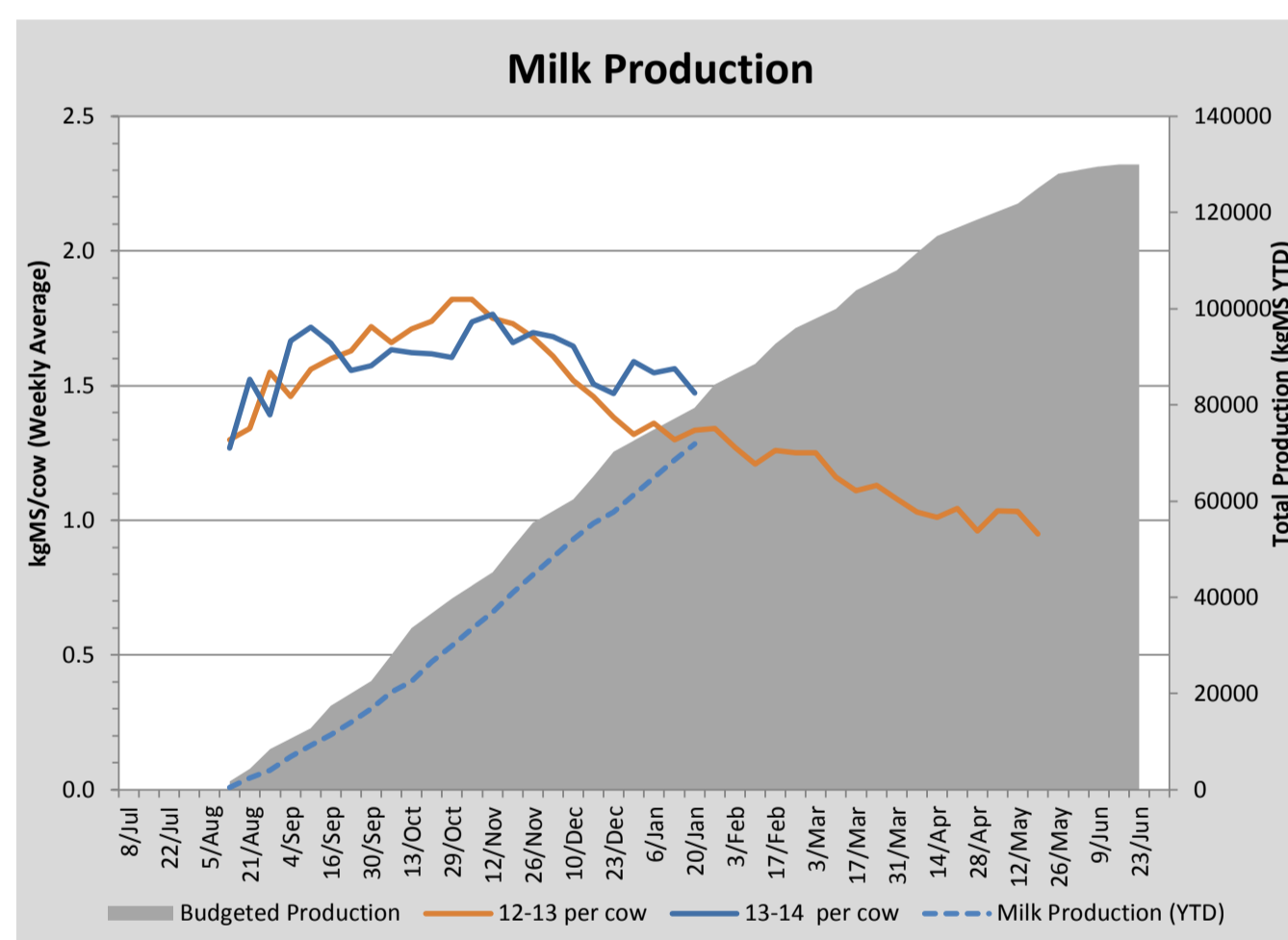
Key Summary Points

- 1 Average pasture cover dropped this week to 2317kg DM/ha with a further drop in growth rate on the rainfed paddock (17kg/ha/day average). Irrigated paddocks continue to perform well, growing at 70kg DM/ha/day (average).
- 2 Cows and heifers were pregnancy tested this week to determine 6 week in calf rates. The six week in calf rate for cows was 72% and heifers 89%.
- 3 Focuses for the coming week are to ID low producing cows to be dried off over the coming weeks and spread urea on both rain fed and irrigated paddocks to maximise growth potential from recent rainfall.

PASTURE INFORMATION	Farm			Irrigated			Rain-fed		
	Last Week	This Week	Variation	Last Week	This Week	Variation	Last Week	This Week	Variation
Grazed milking area (ha)	110.5	110.5	0.0	41.0	41.0	0.0	69.5	69.5	0
Rotation Length (days)	39	28	-12	22	21	-1	77	35	-42
Grazing allocation per day (ha)	2.8	4.0	1.2	1.9	2.0	0.1	0.9	2.0	1.1
Average time since last grazed (days)	35	33	-2	32	25	-7	37	38	1
Leaf appearance rate (days per leaf)	11	12	1	10	9	-1	12	14	2
Average Pasture Cover (kgDM/ha)	2392	2315	-77	2455	2593	138	2355	2151	-204
Pasture Growth Rate (kgDM/ha/day)	47	36	-12	86	68	-18	25	17	-8
Post Grazing Biomass (kgDM/ha)	1553	1591	38						
Nitrogen applied YTD (kgN/ha)	91	91	0	7	0	-7	6	0	-6

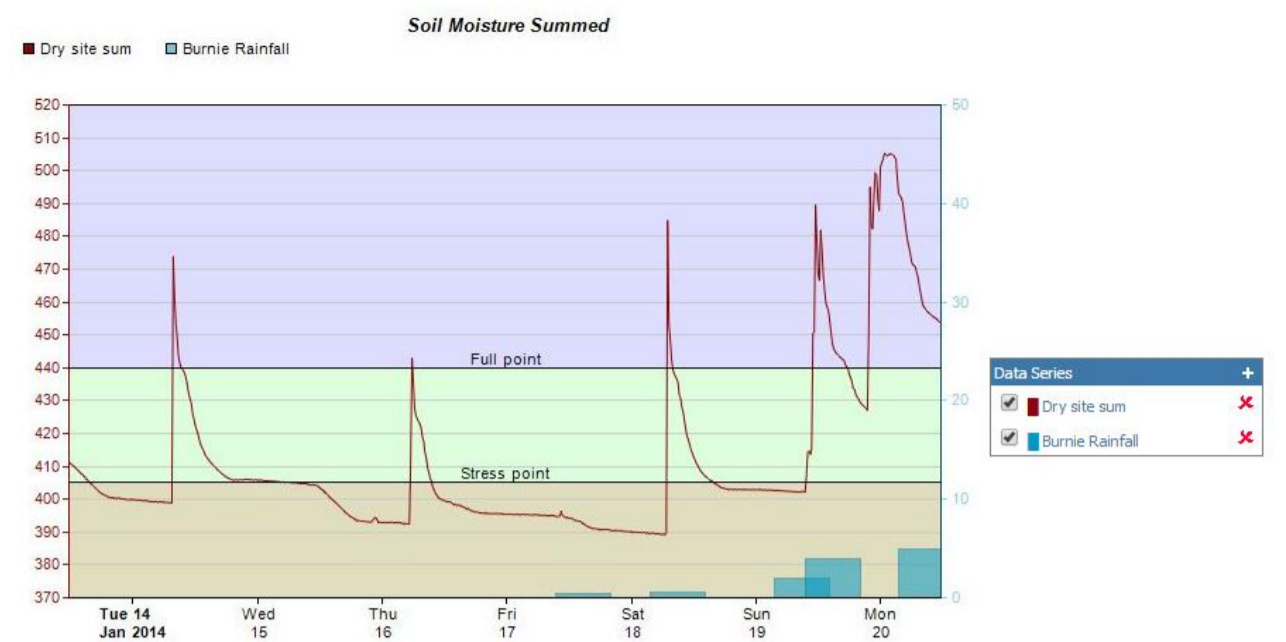
*Please note all pasture calculations detailed above are based on the current Grazed Milking Area

MILK PRODUCTION	Last Week	This Week	Variation
Average No. cows in milk (vat)	329	331	2
Litres per cow	21.8	20.3	-1.6
% Fat	3.98	4.10	0.12
% Protein	3.18	3.12	-0.06
MS/cow/day	1.56	1.47	-0.09
MS/ha/day	4.55	4.31	-0.24
BMCC	109	124	15
Average Liveweight (kg)	502	505	3
	Budget	To Date	Variation
Total Milk Production (kgMS)	79,395	71,941	91%
MS/ha YTD	709	684	-25

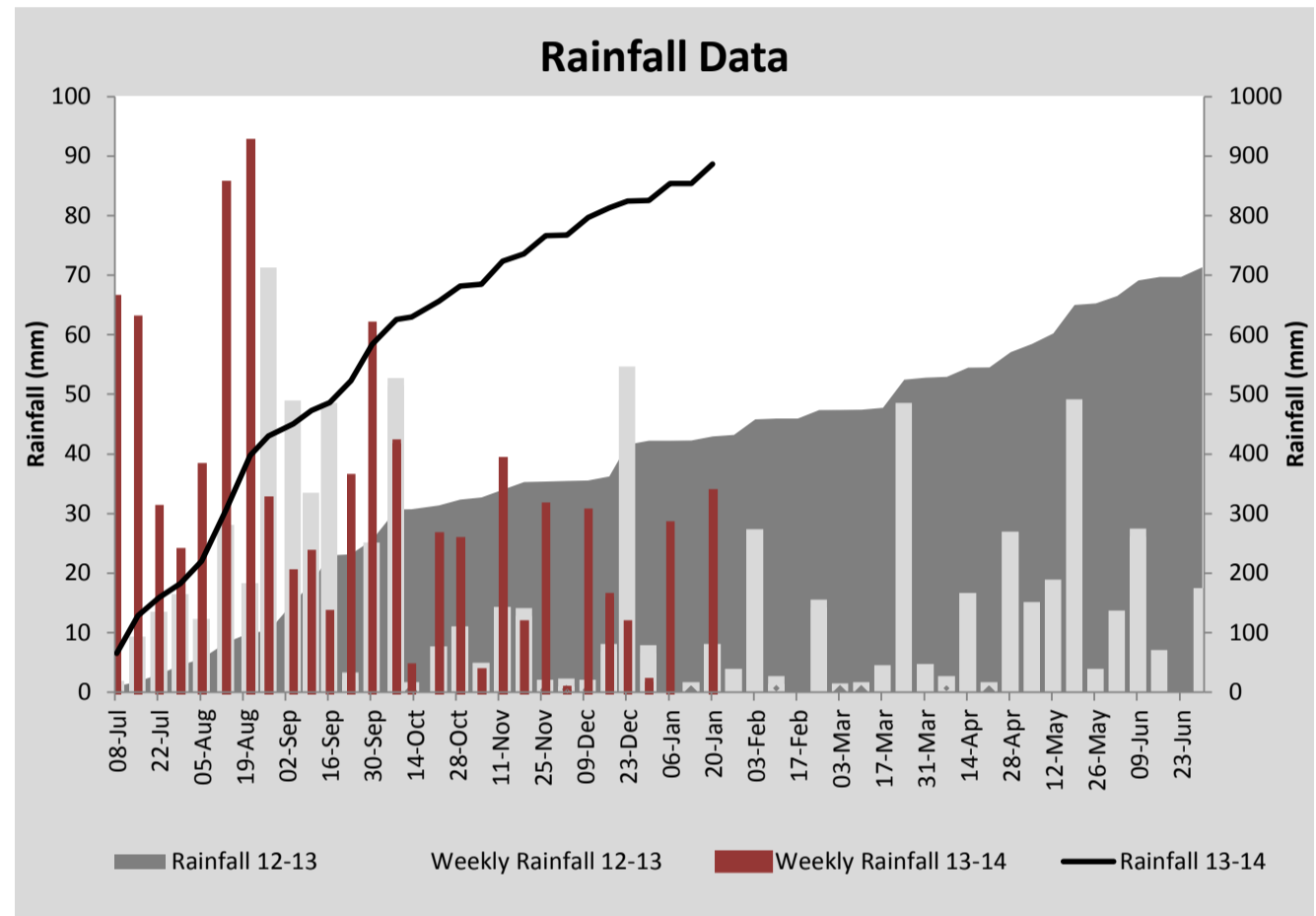
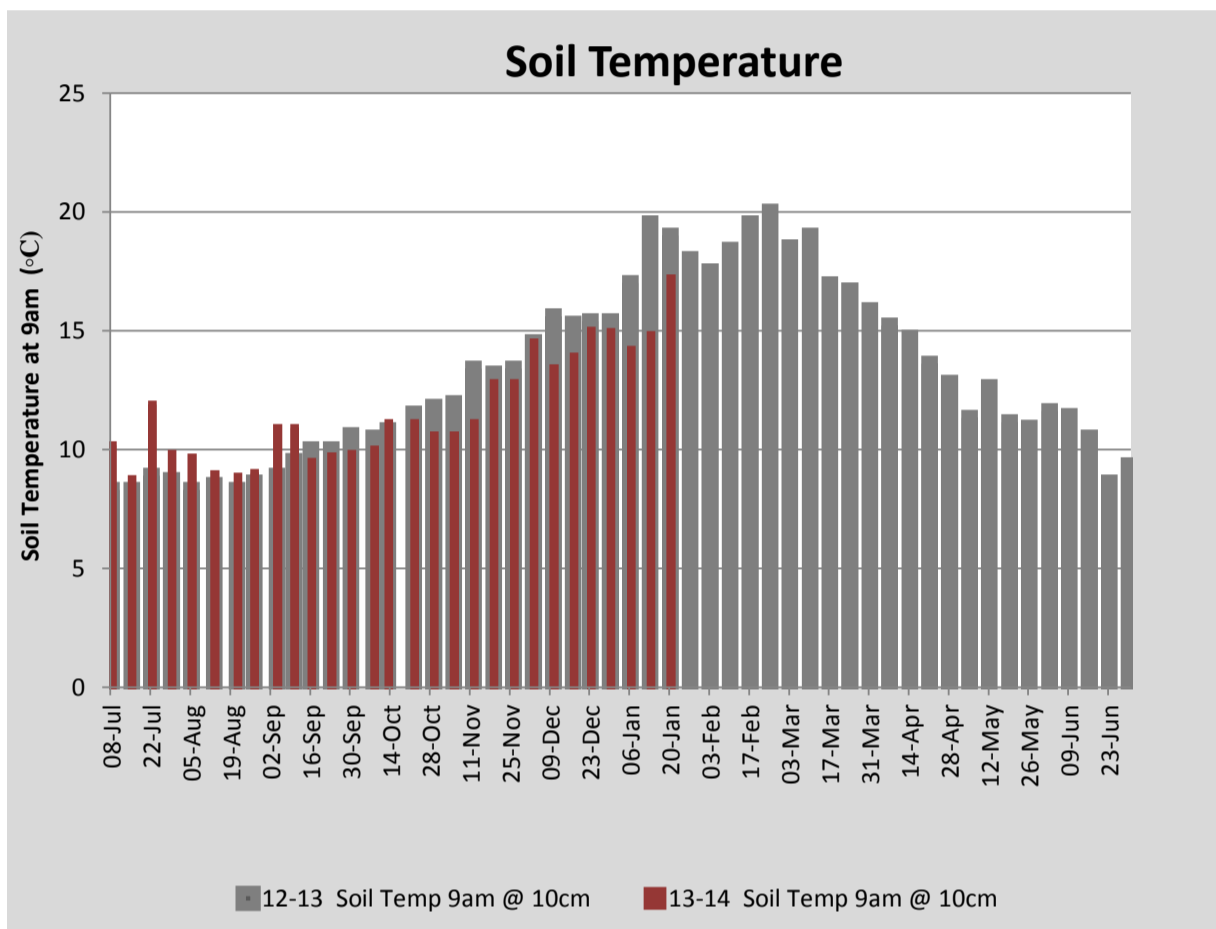


Last 7 days					
Milkers Diet	kg DM	MJ ME	CP (%)	NDF (%)	\$/cow
Pasture Intake	14.6	11.5	22.3	49.5	0.0
Concentrates	3.5	13.0	11.0	21.0	0.0
Silage	0.9	10.5	15.0	49.0	0.0
Grazed forage	0.0	0.0	0.0	0.0	0.0
Other feeds	0.0	0.0	0.0	0.0	0.0
Total	19	222.9	19.9	44.2	0
Target		191	16-18	>33	0

Note: silage nutritional content is estimated based on pasture analysis during silage season, testing will be conducted early in 2014.



Soil moisture in 'dry zone' of pivot



Analysis			
Expected growth rate next 7 days (kgDM/ha/day)	36	Target Leaf Grazing Stage	2.5
Total Demand from Pasture (kgDM/ha/day)	41	Predicted APC 7 days time	2276
APC balance (kgDM/ha/day)	-5	Predicted APC Change	-38.3

Discussion

Average pasture cover fell this week by 77kgDM/ha to 2315kgDM/ha with little response yet on rain fed pastures to recent rainfall. Good rainfalls on Sunday and Monday (33mm in total) should help hold growth on rain fed paddocks. To increase the growth potential of these paddocks 40kgN/ha will be applied to these paddocks in the coming week, 4 days pre-grazing and 7 days post grazing (both irrigated and rain fed). Per cow milk solid production dipped below 1.5kgMS/cow/day to 1.47kgMS/cow/day (average) this week. This is most likely due to a higher proportion of lower quality (average time since last grazed 38 days) rain fed paddocks in the rotation and the disruption to routine caused by pregnancy testing. All cows and heifers mated were pregnancy tested this week to determine the 6 week in calf rate. The cows tested at 72% with is on target while the heifers tested at 89% with is a little below target. The lower than expected in calf rate for the heifers was partly due to a few smaller heifers testing empty which were probably just too light to be mated. All empties were examined and no abnormalities were found.

20 January 2014

