

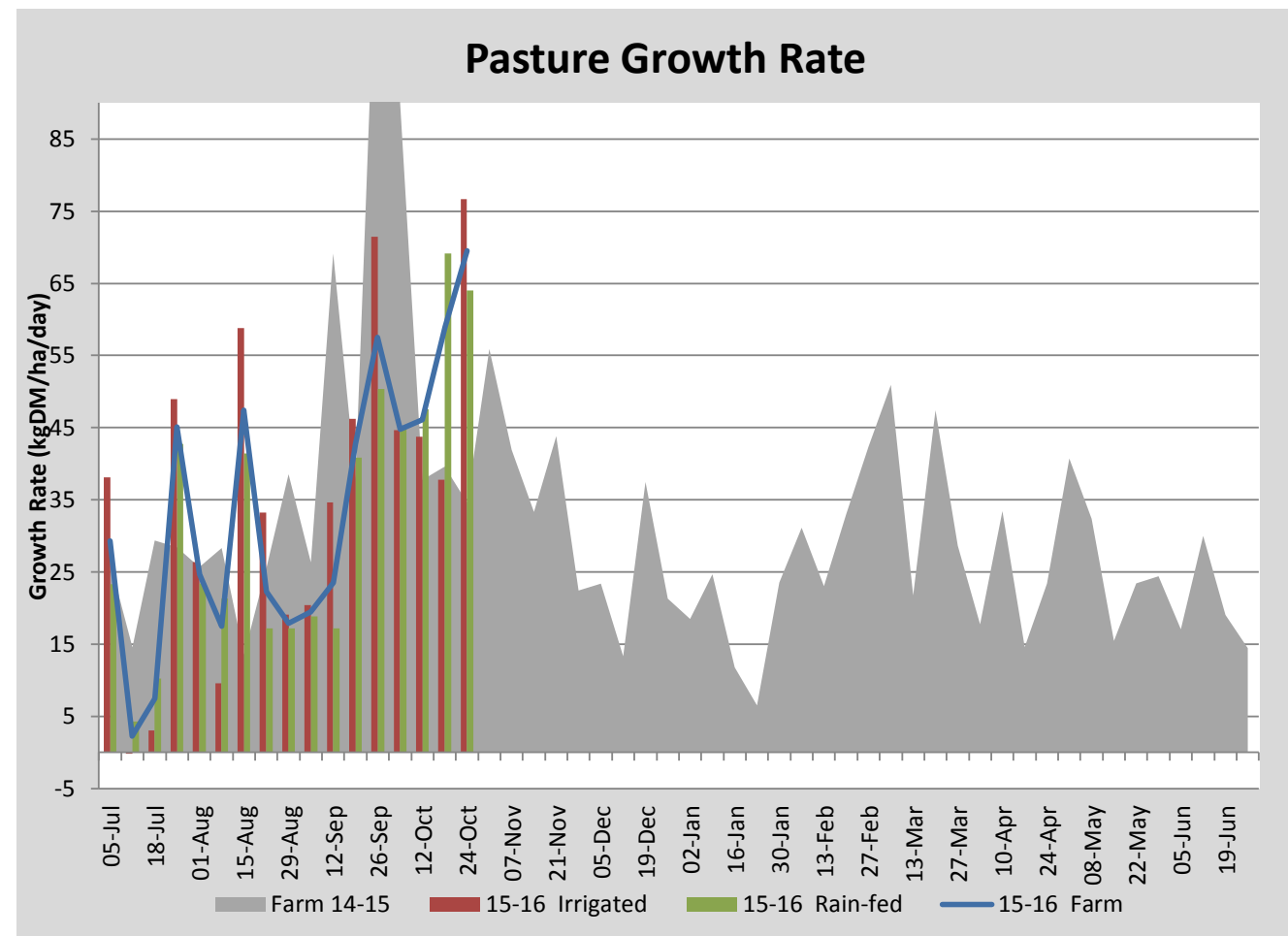
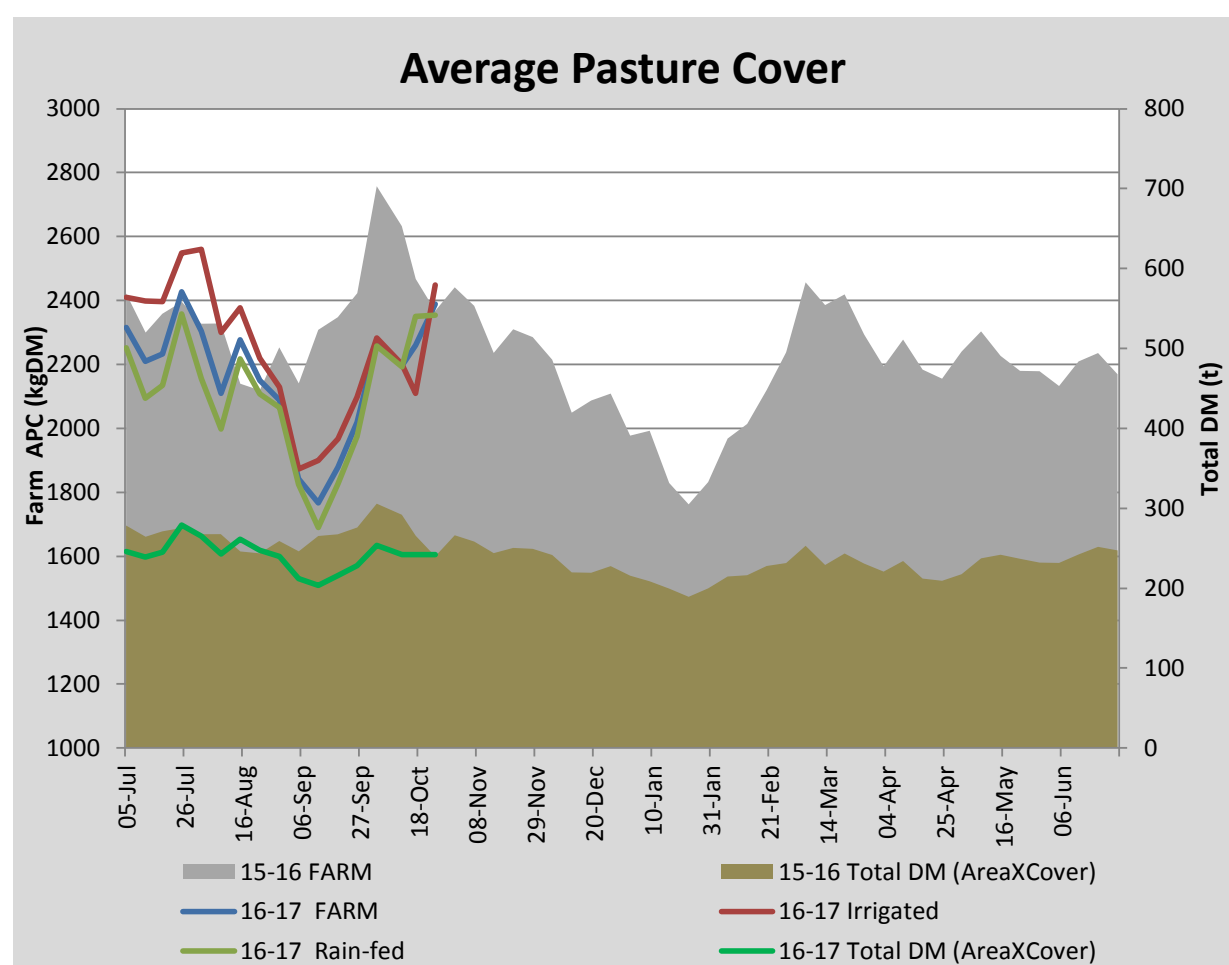
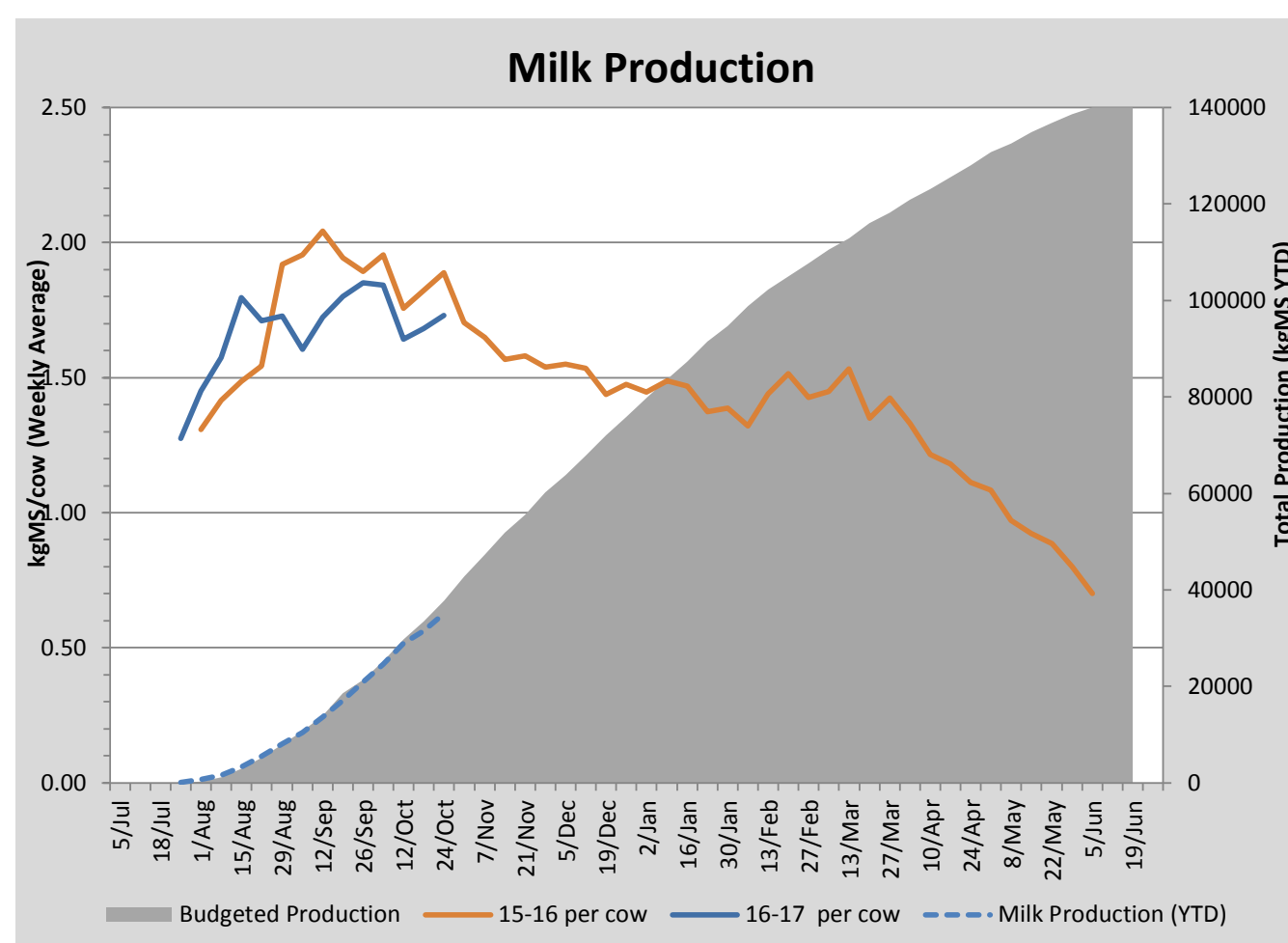
Key Summary Points

- 1 Average pasture cover increased this week to 2389kgDM/ha with growth rates averaging 70kgDM/ha/day across the milking platform.
- 2 Per cow milk solid production continues to recover this week from the crash experience a fortnight ago, due to a milking plant failure and a forced skipped milking.
- 3 The focus for the coming week is to monitor residuals and identify paddocks to be dropped for silage, if a pasture surplus begins to develop.

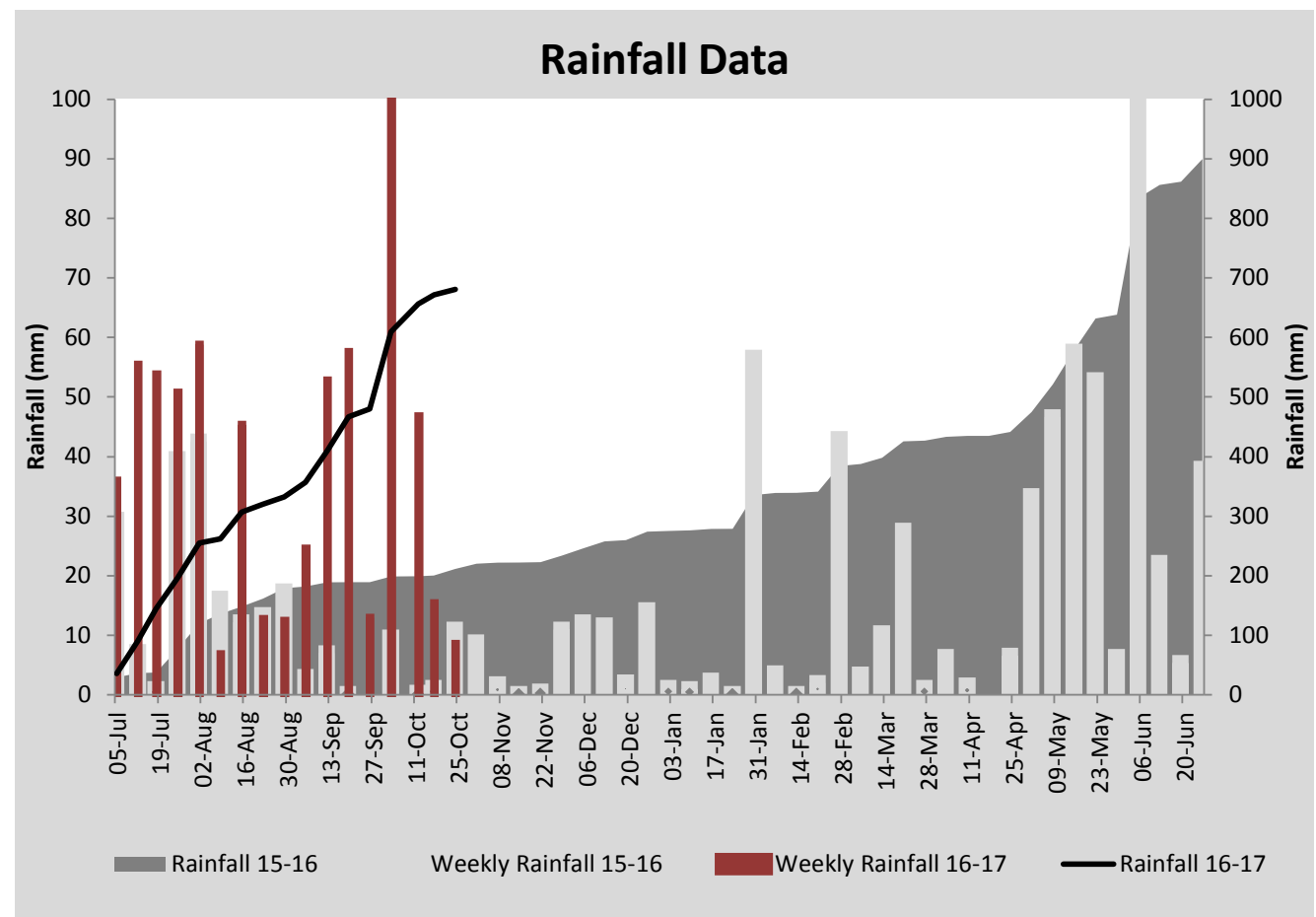
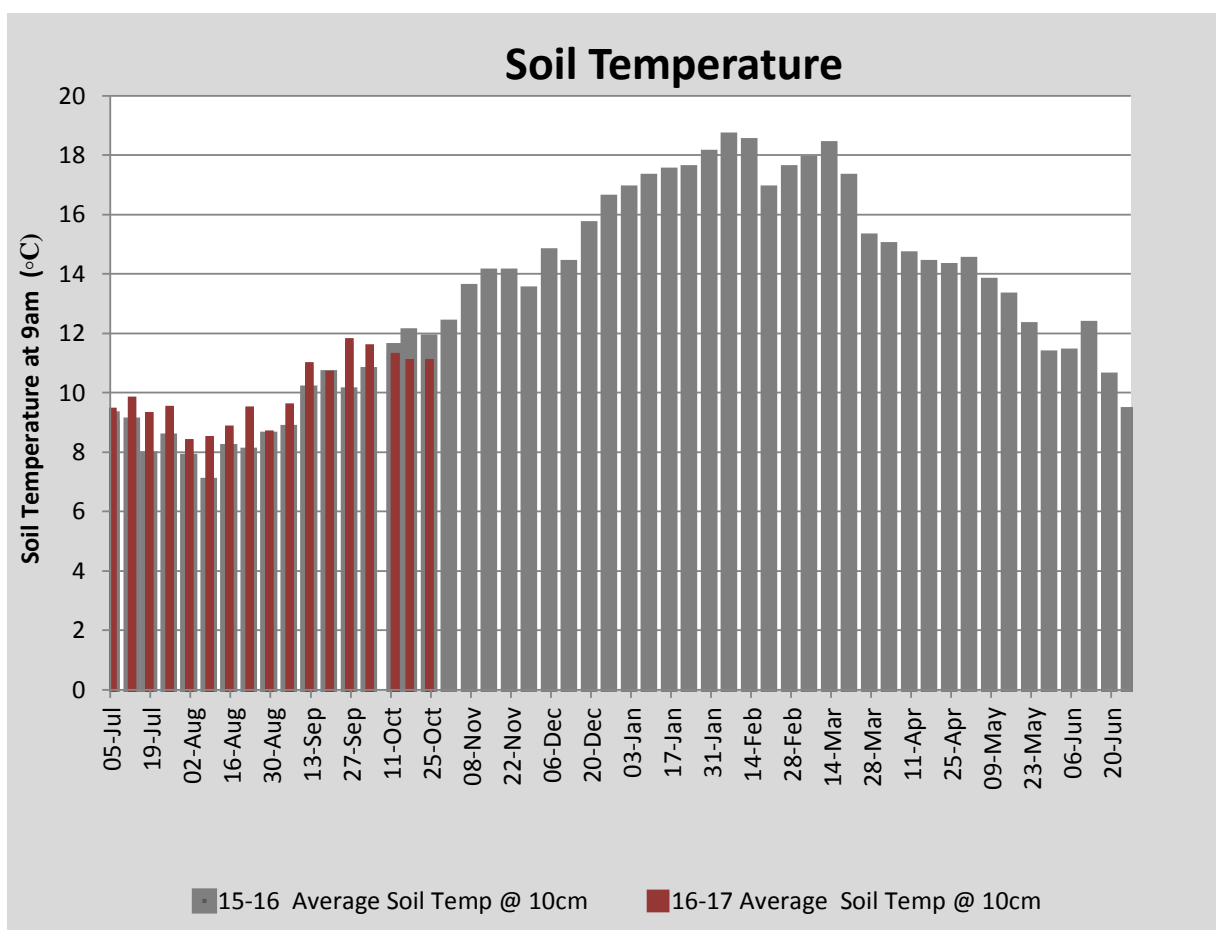
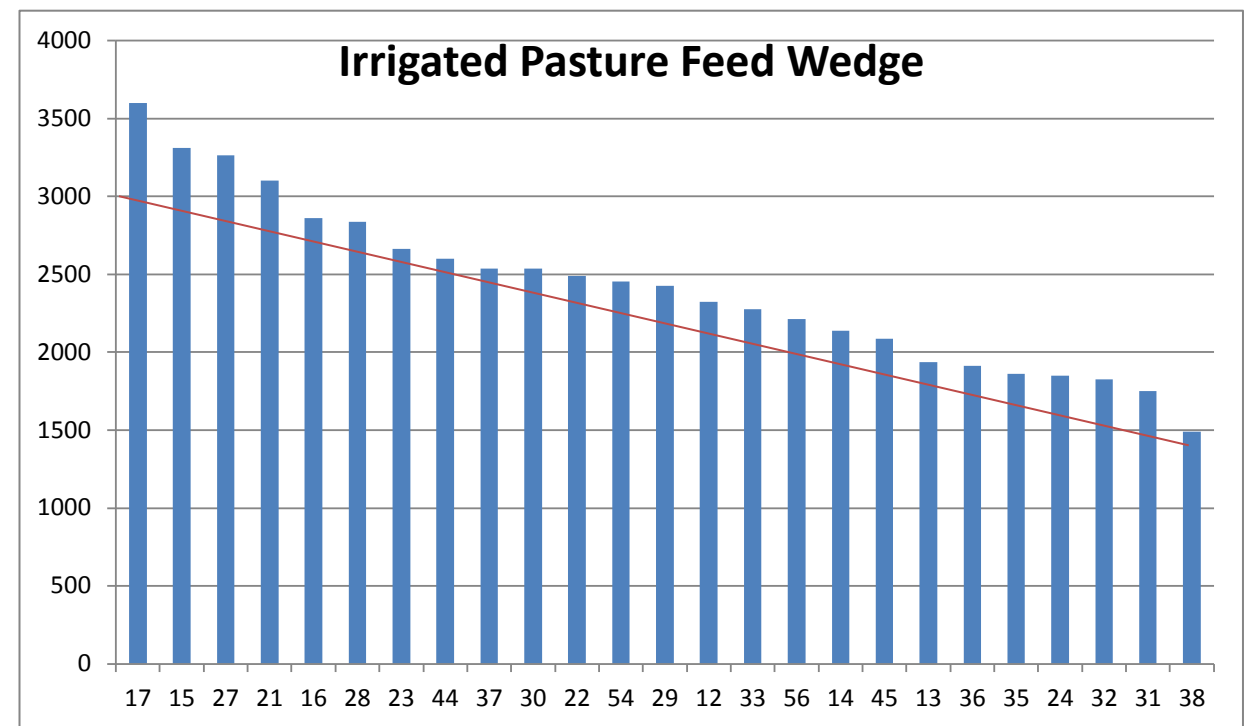
PASTURE INFORMATION	Farm			Irrigated			Rain-fed		
	Last Week	This Week	Variation	Last Week	This Week	Variation	Last Week	This Week	Variation
Grazed milking area (ha)	107.2	101.3	-5.9	42.2	40.1	-2.1	59.1	60.3	1
Rotation Length (days)	35	38	3	30	59	29	38	30	-8
Grazing allocation per day (ha)	3.1	2.7	-0.4	1.3	0.7	-0.6	1.8	2.0	0.2
Average time since last grazed (days)	33	45	12	28	39	11	36	49	13
Leaf appearance rate (days per leaf)	12	10	-2	12	10	-2	12	10	-2
Average Pasture Cover (kgDM/ha)	2260	2389	129	2109	2448	339	2350	2354	4
Pasture Growth Rate (kgDM/ha/day)	59	70	11	38	77	39	69	64	-5
Post Grazing Biomass (kgDM/ha)	1600	1550	-50						
Nitrogen applied YTD (kgN/ha)	70	79	9	0	6	6	0	11	11

*Please note all pasture calculations detailed above are based on the current Grazed Milking Area

MILK PRODUCTION	Last Week	This Week	Variation
Average No. cows in milk (vat)	354	352	-2
Litres per cow	22.3	22.4	0.1
% Fat	4.24	4.37	0.13
% Protein	3.26	3.32	0.06
MS/cow/day	1.68	1.73	0.05
MS/ha/day	5.27	5.39	0.12
BMCC	116,143	119,857	3,714
Average Liveweight (kg)	452	456	4
	Budget	To Date	Variation
Total Milk Production (kgMS)	37,750	35,111	93%
MS/ha YTD	331	360	109%



Last 7 days					
Milkers Diet	kg DM	MJ ME	CP (%)	NDF (%)	\$/cow
Pasture Intake	15.0	0.0	0.0	0.0	0.0
Concentrates	4.0	0.0	0.0	0.0	0.0
Silage	0.0	0.0	0.0	0.0	0.0
Grazed forage	0.0	0.0	0.0	0.0	0.0
Other feeds	0.0	0.0	0.0	0.0	0.0
Total	19	0	0.0	0.0	0
Target		90	16-18	>33	0



Analysis			
Expected growth rate next 7 days (kgDM/ha/day)	70	Target Leaf Grazing Stage	2.5-3.0
Total Demand from Pasture (kgDM/ha/day)	59	Predicted APC 7 days time	2467
APC balance (kgDM/ha/day)	11	Predicted APC Change	77.6

Discussion

Average pasture cover increased this week to 2389kg DM/ha with pasture growth rates of 70kg/ha/day recorded on the milking platform. With growth exceeding demand we will drop the concentrate level to 2kgDM/cow/day next week and look to begin dropping paddocks for silage, if a surplus begins to develop. 20 R2 steers are being used manage to residuals behind the cows where required. 3 ha of the milking platform, sprayed off a fortnight ago, will be planted late next week with Barkant turnips. An additional 2 ha will be sprayed off at the same time ready for planting mid-November bringing the total area under crop to 7.9ha. Milk solid production continues to recover this week after dropping off significantly due to a milking plant breakdown a fortnight ago, forcing us to skip a milking. Mating of cows commenced on the 19th of October, cows were synchronised on a double PG program and date 233 cows have presented for insemination.

24 October 2016

