

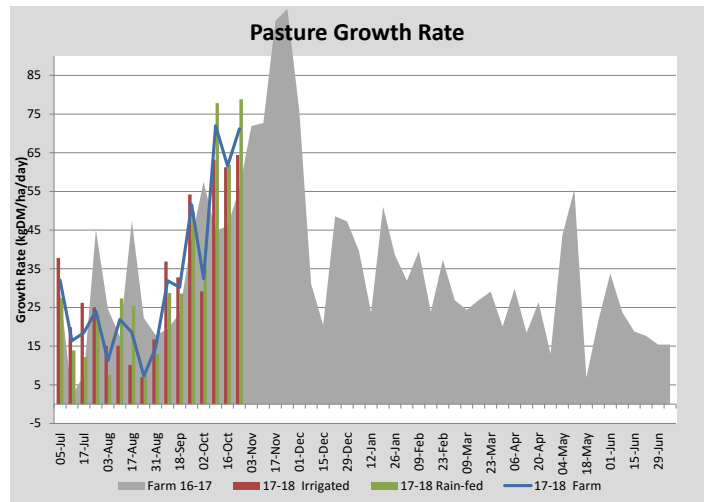
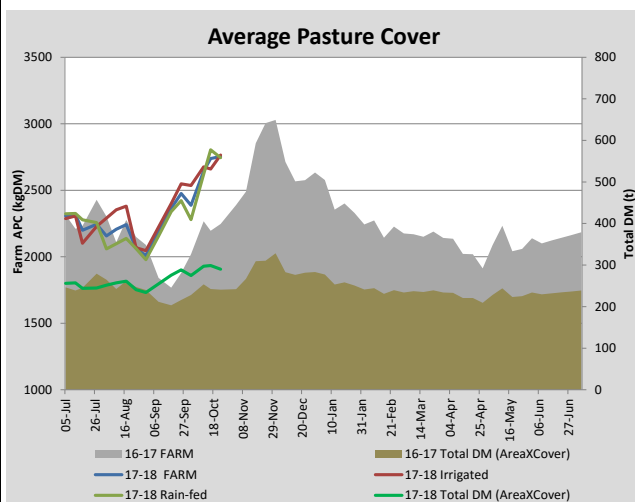
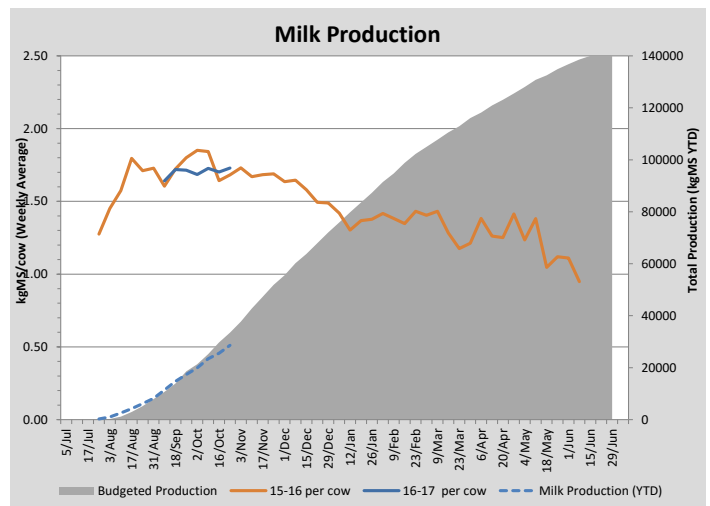
Key Summary Points

1	Irrigation has commenced.
2	12 hectares on the milking area has been cut and baled for silage.
3	Mating of cows starts on October 26.

PASTURE INFORMATION	Farm			Irrigated			Rain-fed		
	Last Week	This Week	Variation	Last Week	This Week	Variation	Last Week	This Week	Variation
Grazed milking area (ha)	109.1	105.3	-3.9	40.5	47.6	7.1	64.8	57.7	-7
Rotation Length (days)	30	34	4	23	108	85	39	21	-18
Grazing allocation per day (ha)	3.7	3.1	-0.6	2.2	0.4	-1.7	1.5	2.7	1.2
Average time since last grazed (days)	41	33	-8	52	36	-16	32	30	-2
Leaf appearance rate (days per leaf)	13	12	-1	13	12	-1	13	12	-1
Average Pasture Cover (kgDM/ha)	2739	2754	15	2659	2765	106	2804	2745	-60
Pasture Growth Rate (kgDM/ha/day)	62	71	10	61	64	3	62	79	17
Post Grazing Biomass (kgDM/ha)	1643	1616	-27						
Nitrogen applied YTD (kgN/ha)	8	8	0	0	0	0	0	0	0

*Please note all pasture calculations detailed above are based on the current Grazed Milking Area

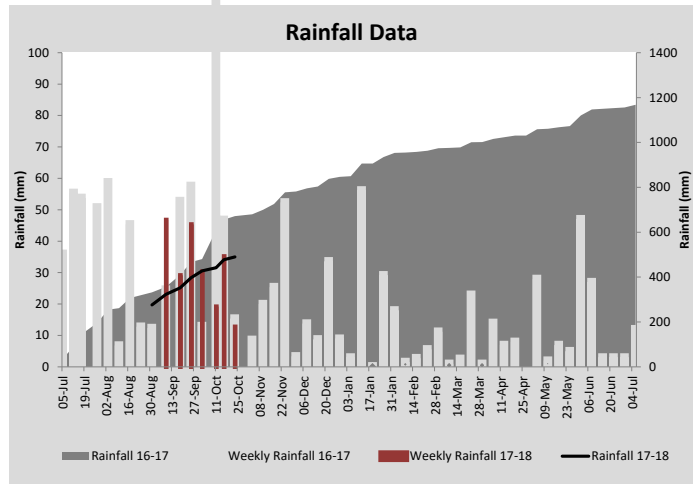
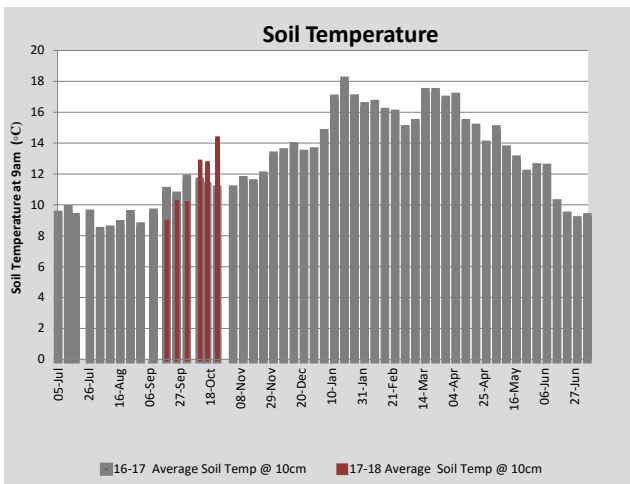
MILK PRODUCTION	Last Week	This Week	Variation
Average No. cows in milk (vat)	309	312	3
Litres per cow	22.8	23.2	0.4
% Fat	4.17	4.15	-0.03
% Protein	3.23	3.32	0.09
MS/cow/day	1.70	1.73	0.03
MS/ha/day	4.65	4.77	0.12
BMCC	185,571	160,143	-25,429
Average Liveweight (kg)	0	0	0
	Budget	To Date	Variation
Total Milk Production (kgMS)	33,479	28,600	85%
MS/ha YTD	294	291	99%



Last 7 days					
Milkers Diet	kg DM	MJ ME	CP (%)	NDF (%)	\$/cow
Pasture Intake	14.0	12.3	15.1	41.5	0.0
Concentrates	4.0	12.8	14.0	10.0	0.0
Silage	0.0	0.0	0.0	0.0	0.0
Grazed forage	0.0	0.0	0.0	0.0	0.0
Other feeds	0.0	0.0	0.0	0.0	0.0
Total	18	223	14.9	34.5	0
Target			16-18	>33	0



Irrigation started at TDRF this week. Fifty hectares of the milking area is irrigated using three different systems: centre pivot, k-line and fixed.



Analysis			
Expected growth rate next 7 days (kgDM/ha/day)	65	Target Leaf Grazing Stage	2.0-2.5
Total Demand from Pasture (kgDM/ha/day)	32	Predicted APC 7 days time	2983
APC balance (kgDM/ha/day)	33	Predicted APC Change	228.7

Discussion

Mating of the heifers took place this week. The heifers had been synchronised and then were fixed-time inseminated. Bulls were then put with the group. Pasture continues to grow well. Twelve hectares has been cut for silage and more paddocks have been dropped-out of the grazing rotation to be cut over the next two weeks. Irrigation has started on the milking area. With three different systems in use (pivot, fixed and k-line) the irrigation program is a bit complex. However the aim with each system is to match the amount of water applied with the evapotranspiration rate. The average water requirement (taking into account rainfall and evapotranspiration) over the past week has been 2.3 mm/day. The pivot is able to apply 12 mm/day which means at the moment it needs to be run every four to five days. The fixed irrigation applies 6 mm/hour and at the moment is being run for 3 hours, twice per week which applies the equivalent of 4 mm/day. The k-lines apply 6 mm/hour and are being run for four hours every 6 days which applies the equivalent of 4 mm/day. These are all slightly higher than the average water requirement for the past week taking into account evapotranspiration rates are increasing as the temperature increases. The milking herd was synchronised and mating is due to start on October 26.

23 October 2017

