

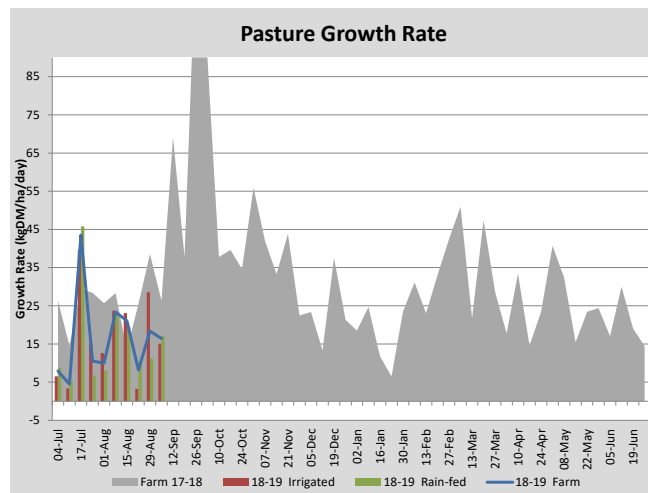
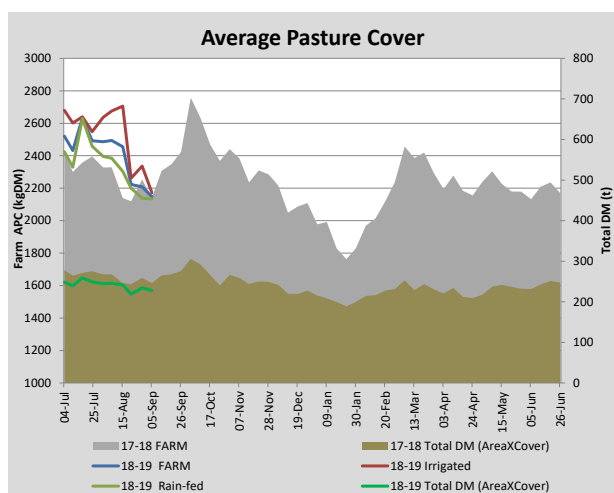
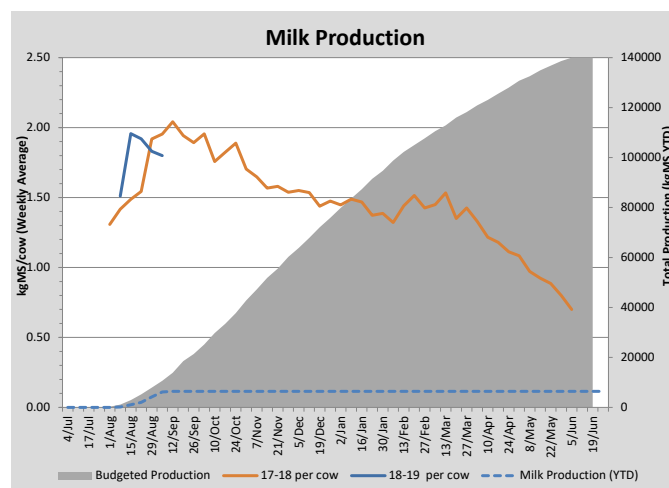
## Key Summary Points

- 1 Extra supplement has been added to the milkers diet.
- 2 Nitrogen continues to be applied.
- 3 Young stock will be weighed next week.

PASTURE INFORMATION	Farm			Irrigated			Rain-fed		
	Last Week	This Week	Variation	Last Week	This Week	Variation	Last Week	This Week	Variation
Grazed milking area (ha)	106.2	106.2	0.0	37.2	37.2	0.0	69.0	69.0	0.0
Leaf appearance rate (days per leaf)	18	17	-1	18	17	-1	18	17	-1
Average Pasture Cover (kgDM/ha)	2208	2148	-60	2337	2173	-164	2138	2135	-4
Pasture Growth Rate (kgDM/ha/day)	18	16	-2	29	15	-13	11	17	6
Post Grazing Biomass (kgDM/ha)	1512	1520	8						
Nitrogen applied YTD (kgN/ha)	11	14	3	19	2	-17	6	4	-3

\*Please note all pasture calculations detailed above are based on the current Grazed Milking Area

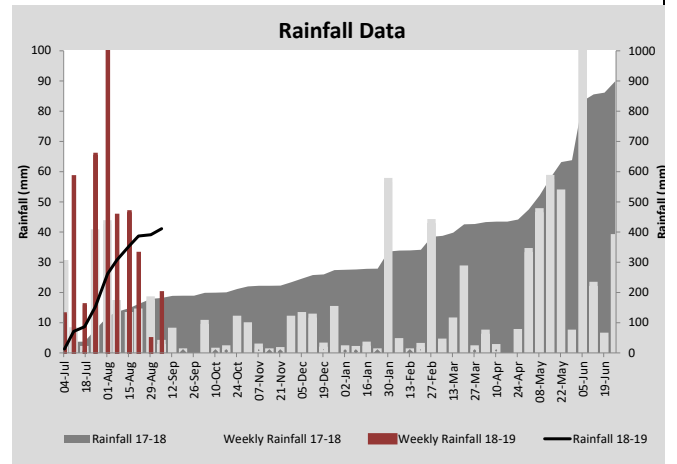
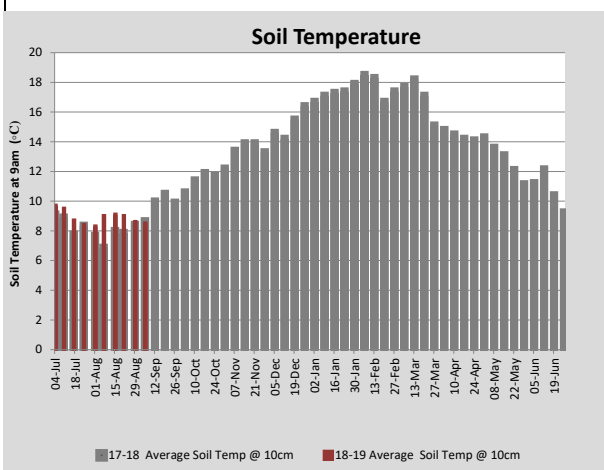
MILK PRODUCTION	Last Week	This Week	Variation
Average No. cows in milk (vat)	200	215	15
Litres per cow	24.3	24.0	-0.3
% Fat	4.18	4.33	0.15
% Protein	3.35	3.08	-0.27
MS/cow/day	1.83	1.80	-0.03
MS/ha/day	3.24	3.42	0.18
BMCC	239	225	-14
Average Liveweight (kg)	0	0	0
	Budget	To Date	Variation
Total Milk Production (kgMS)	10,697	6,164	-58%
MS/ha YTD	94		



Last 7 days					
Milkers Diet	kg DM	MJ ME	CP (%)	NDF (%)	\$/cow
Pasture Intake	9.0	13.3	22.6	45.2	0.0
Concentrates	4.0	12.5	14.0	20.0	0.0
Silage	3.0	10.0	0.0	0.0	0.0
Grazed forage	0.0	0.0	0.0	0.0	0.0
Other feeds	0.0	0.0	0.0	0.0	0.0
<b>Total</b>	<b>16</b>	<b>199.7</b>	<b>16.2</b>	<b>30.4</b>	<b>0</b>
<b>Target</b>		<b>210</b>	<b>16-18</b>	<b>&gt;33</b>	<b>0</b>



The first group of calves has been moved outside to one of the calf paddocks.



Analysis			
Expected growth rate next 7 days (kgDM/ha/day)	30	Target Leaf Grazing Stage	2.5-3.0
Total Demand from Pasture (kgDM/ha/day)	7	Predicted APC 7 days time	2309
APC balance (kgDM/ha/day)	23	Predicted APC Change	161.4

## Discussion

The feed gap identified by the feedwedge in the previous report is now here. Pasture intake is being topped-up with silage and the amount of pellets being fed has increased by 1 kg/cow/day. While it is anticipated pasture growth rates should start increasing at a reasonable rate now, the feed wedge shows the feed gap will last into the next week. Nitrogen is being applied on the recently grazed paddocks each week. The first group of calves has been moved outside and their pens cleaned out ready for fresh bedding to house the last group of calves to be born. Young stock will be weighed next week to check they are achieving target growth and liveweight.

# 5 September 2018

