

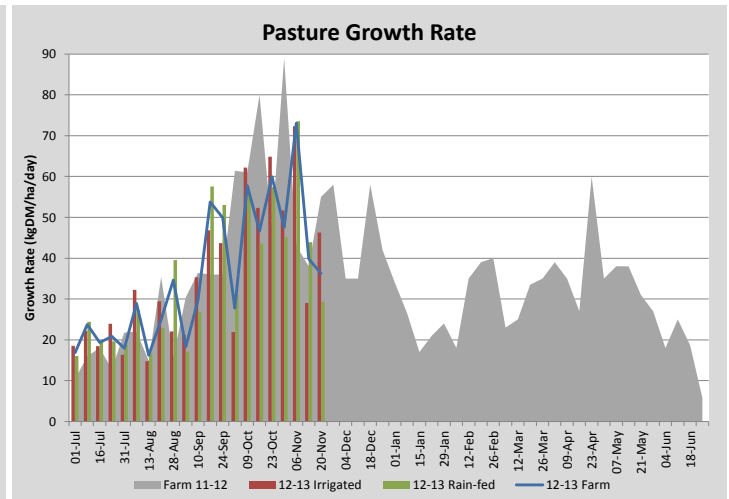
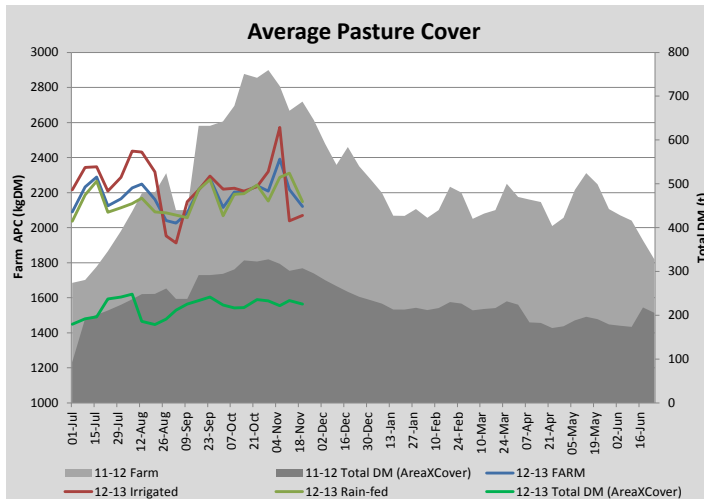
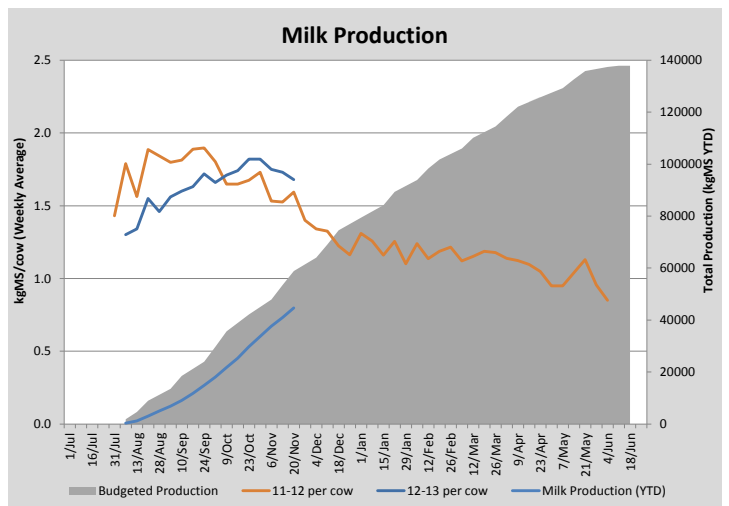
## Key Summary Points

- 1** Rain-fed growth rates have continued to slow and no rain is forecast. Irrigated growth rates have been slower than ideal due to irrigation problems (which are now fixed).
- 2** Grass quality has dropped as the plants become stemmy and reproductive.
- 3** The key focus this week is stretching out the rotation length to 50 days (by adding silage and concentrate) to help deal with an approaching 'gap' in the feed wedge

PASTURE INFORMATION	Farm			Irrigated			Rain-fed		
	Last Week	This Week	Variation	Last Week	This Week	Variation	Last Week	This Week	Variation
Grazed milking area (ha)	105.4	106.3	1.0	35.9	35.9	0.00	69.5	70.4	0.95
Rotation Length (days)	28	35		20	24		37	47	
Grazing allocation per day (ha)	3.7	3.0	0.70	1.8	1.5	0.30	1.9	1.5	0.40
Average time since last grazed (days)	27	32	5	27	25	2	27	35	8
Leaf appearance rate (days per leaf)	11	13	2	10	10	0	12	15	3
Average Pasture Cover (kgDM/ha)	2218	2121	-96	2039	2069	31	2310	2148	-162
Pasture Growth Rate (kgDM/ha/day)	40	36	-4	29	46	17	44	29	-15
Post Grazing Biomass (kgDM/ha)	1650	1500	150						
Nitrogen applied YTD (kgN/ha)	123	123	0	11	0	-11	7	0	-7

\*Please note all pasture calculations detailed above are based on the current Grazed Milking Area

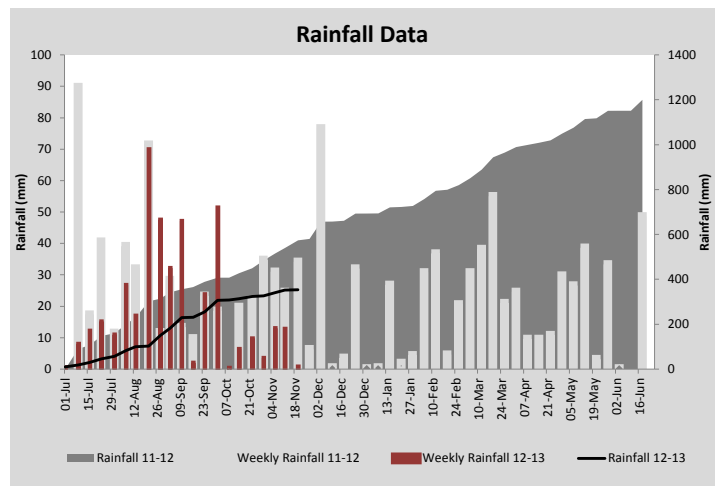
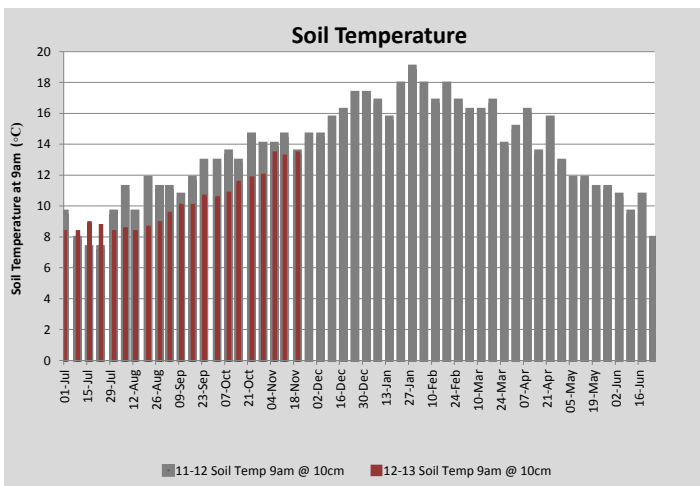
MILK PRODUCTION	Last Week	This Week	Variation
No cows in milk (vat)	330	330	0.00
Litres per cow	24.2	23.6	0.60
% Fat	4.02	4.03	0.01
% Protein	3.10	3.10	0.00
MS/cow/day	1.73	1.68	0.05
MS/ha/day	4.73	4.86	0.13
BMCC	196	213	17.00
Average Liveweight (kg)			
	Budget	To Date	Variation
Total Milk Production (kgMS)	58861	44708.00	76%
MS/ha YTD	526	399	-126



Last 7 days					
Milkers Diet	kg DM	ME	CP	NDF	\$/cow
Pasture Intake	10.5	11.5	0.0	0.0	0.0
Concentrates	4.0	12.0	0.0	0.0	0.0
Silage	3.5	10.0	0.0	0.0	0.0
Grazed forage	0.0	0.0	0.0	0.0	0.0
Other feeds	0.0	0.0	0.0	0.0	0.0
<b>Total</b>	<b>18</b>	<b>203.8</b>	<b>0</b>	<b>0</b>	<b>0</b>
<b>Target</b>	<b>18</b>		<b>0</b>	<b>0</b>	<b>0</b>



Rain-fed pasture turning reproductive and losing quality



Analysis			
Expected growth rate next 7 days (kgDM/ha/day)	35	Target Leaf Grazing Stage	3.0
Total Demand from Pasture (kgDM/ha/day)	33	Predicted APC 7 days time	2137
APC balance (kgDM/ha/day)	2	Predicted APC Change	15.6

## Discussion

We haven't been able to run irrigation sufficiently during the week and growth rates have suffered. This is now rectified and we expect irrigated growth rates to increase over the next 7 days. We will add silage to the milkers diet this week and stretch out the overall rotation length to 50 days (1/50th of the available area per day). This will allow us to build cover this week on the irrigated portion of the farm and mean in future weeks we can establish a faster irrigated rotation (around 25 days) while maintaining a much longer rain-fed rotation (55 days). We have also increased concentrate level this week back up to 4kg DM/cow/day to help achieve this rotation length. We will keep applying nitrogen to the irrigated pasture at 40kg/ha. If the rain-fed portion of the farm grows at 25kgDM/ha/day and the irrigated at 60kgDM/ha/day this means an average farm growth of 37kgDM/ha/day. With the added supplement/concentrate this matches our cow demand and means our average cover should stay stable.

# 20 November 2012

