

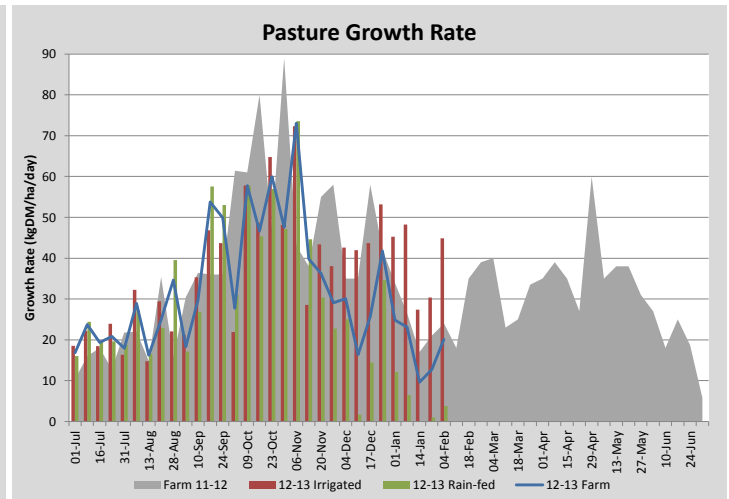
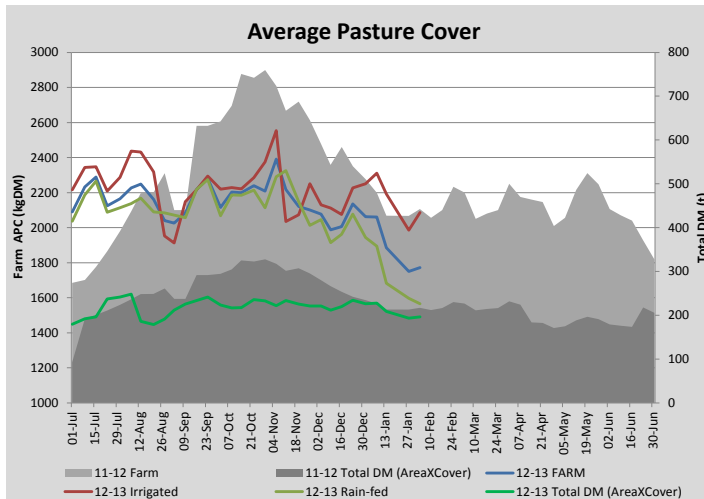
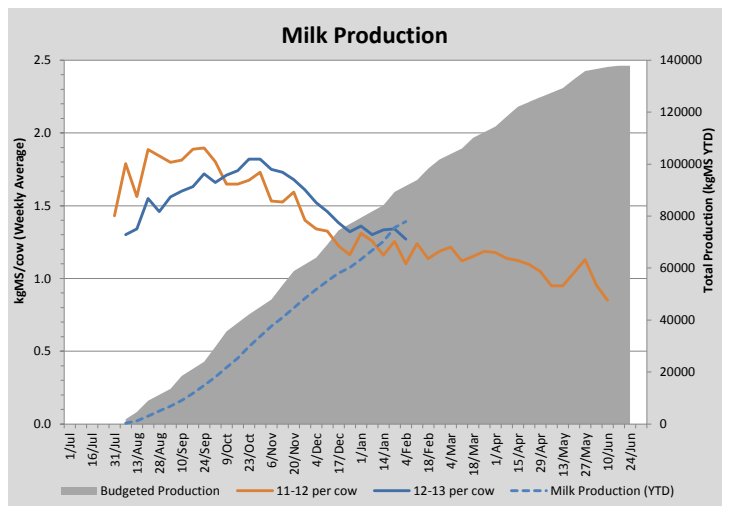
## Key Summary Points

- 1** Irrigated growth rates have increased following the rain (27mm) and we have managed to build cover on the irrigated portion of the farm.
- 2** 20 more cows were dried off in the last week to reduce feed demand.
- 3** Key focus this week is watering winter kale crop up on the runoff and keeping irrigation going on the milking platform and securing extra supplement for the winter period.

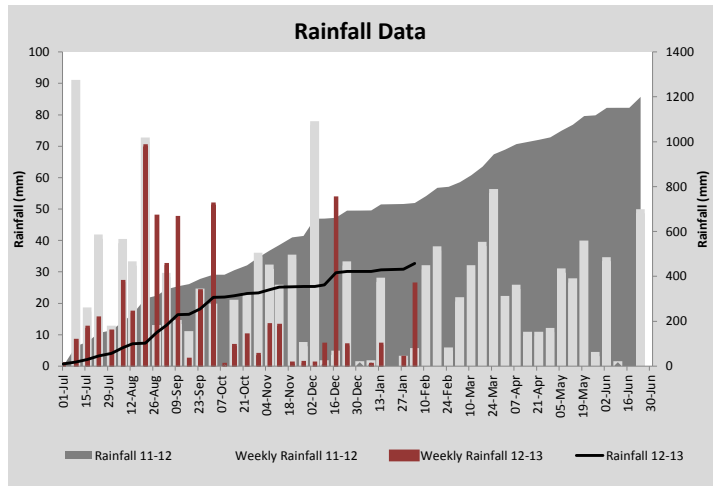
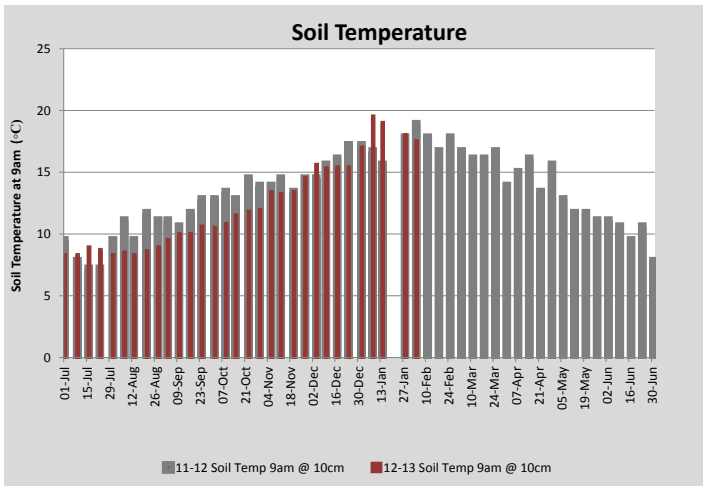
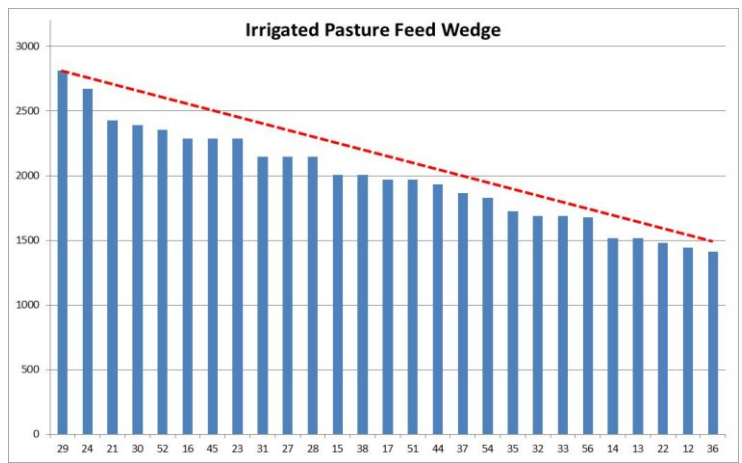
PASTURE INFORMATION	Farm			Irrigated			Rain-fed		
	Last Week	This Week	Variation	Last Week	This Week	Variation	Last Week	This Week	Variation
Grazed milking area (ha)	110.5	110.5	0.0	44.1	44.1	0.00	66.5	66.5	0.00
Rotation Length (days)	39	46		26	49		60	44	
Grazing allocation per day (ha)	2.8	2.4	0.40	1.7	0.9	0.80	1.1	1.5	0.40
Average time since last grazed (days)	48	50	3	26	28	-2	62	65	3
Leaf appearance rate (days per leaf)	10	10	0	10	10	0	#N/A	#N/A	#N/A
Average Pasture Cover (kgDM/ha)	1751	1773	22	1985	2086	101	1596	1565	-31
Pasture Growth Rate (kgDM/ha/day)	13	20	7	30	45	15	1	4	3
Post Grazing Biomass (kgDM/ha)	1450	1450	0						
Nitrogen applied YTD (kgN/ha)	187	192	5	7	5	-3	0	0	0

\*Please note all pasture calculations detailed above are based on the current Grazed Milking Area

MILK PRODUCTION	Last Week	This Week	Variation
No cows in milk (vat)	296	273	23.00
Litres per cow	17.9	16.8	1.06
% Fat	4.37	4.44	0.07
% Protein	3.14	3.13	0.01
MS/cow/day	1.34	1.27	0.07
MS/ha/day	3.66	2.88	0.78
BMCC	191	181	10.00
Average Liveweight (kg)			
	Budget	To Date	Variation
Total Milk Production (kgMS)	91621	77888	85%
MS/ha YTD	818	695	-123



Last 7 days					
Milkers Diet	kg DM	ME	CP	NDF	\$/cow
Pasture Intake	6.5	10.0	0.0	0.0	0.0
Concentrates	5.0	11.0	0.0	0.0	0.0
Silage	5.5	10.0	0.0	0.0	0.0
Grazed forage	0.0	0.0	0.0	0.0	0.0
Other feeds	0.0	0.0	0.0	0.0	0.0
<b>Total</b>	<b>17</b>	<b>175</b>	<b>0</b>	<b>0</b>	<b>0</b>
<b>Target</b>	<b>17</b>		<b>0</b>	<b>0</b>	<b>0</b>



Analysis			
Expected growth rate next 7 days (kgDM/ha/day)	18	Target Leaf Grazing Stage	3.0
Total Demand from Pasture (kgDM/ha/day)	16	Predicted APC 7 days time	1786
APC balance (kgDM/ha/day)	2	Predicted APC Change	13.6

## Discussion

Production continues to drop due to quality of feed available and a high proportion of time spent on rain-fed pastures in the last 7 days. Welcome rainfall has replenished soil moisture levels under the irrigation and we should now be able to keep soil moisture at desired levels. Growth rates have improved under the irrigation and we hope to average 50kgDM/ha/day for the next week. With 20 less cows milking (dried off in the last 7 days) our demand has dropped slightly. For the next 7 days we will use 1/34th of the available irrigated area per day and minimal amounts of rain-fed pasture (1/110th of available area). We have identified at least a 20t feed deficit over the coming late autumn/winter period. We are currently looking for supplement to purchase to meet this gap (planning on purchasing straw to feed out with kale crop and some silage/hay subject to price/availability). We are also currently selling excess R1 heifer calves (non AI bred stock) and will use these funds to cashflow the extra fodder requirements. We have 5 irrigated (or part irrigated) paddocks currently sown to Italian cultivars which need returning to perennial cultivars this autumn. We will stagger early re-sowing of these paddocks as they stop performing and will spray off the first of these in the next week. This paddock has already stopped growing and is fully irrigated meaning we can establish new pastures before the autumn break. As a herd the cows have maintained weight the past 7 days and lost on average 3kg/cow over the past 3 weeks (although there is substantial variation between cows).

# 4 February 2013

