

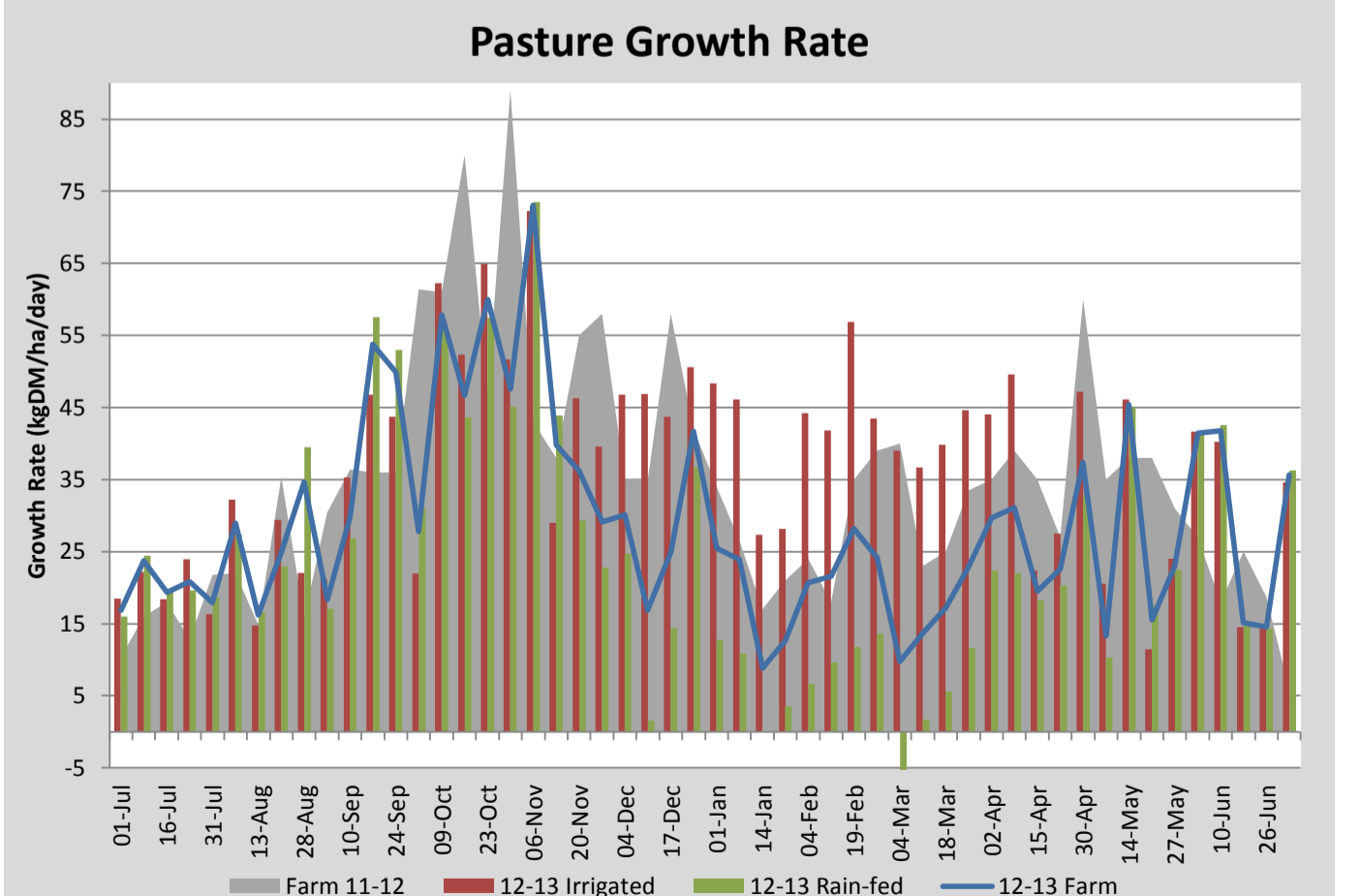
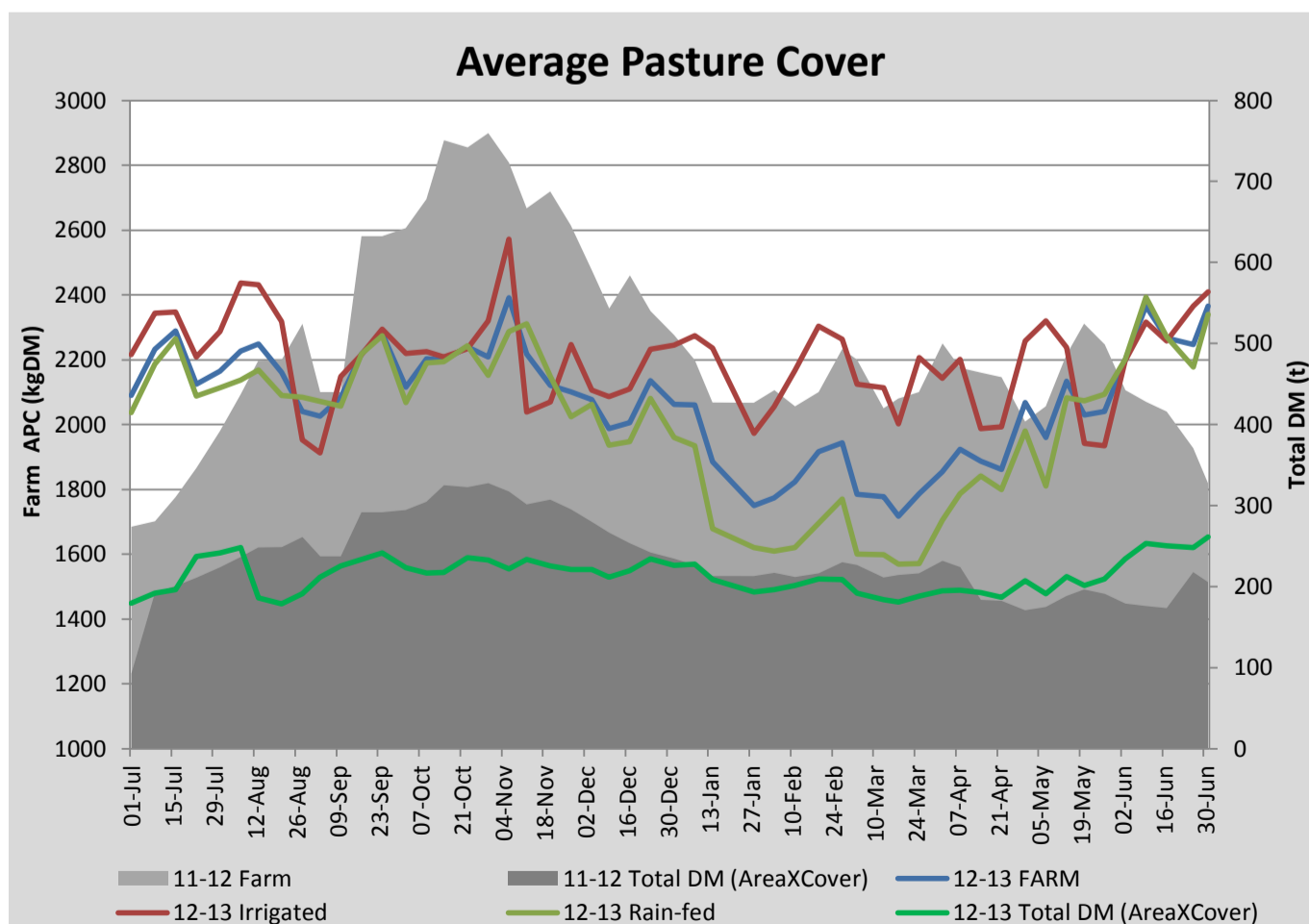
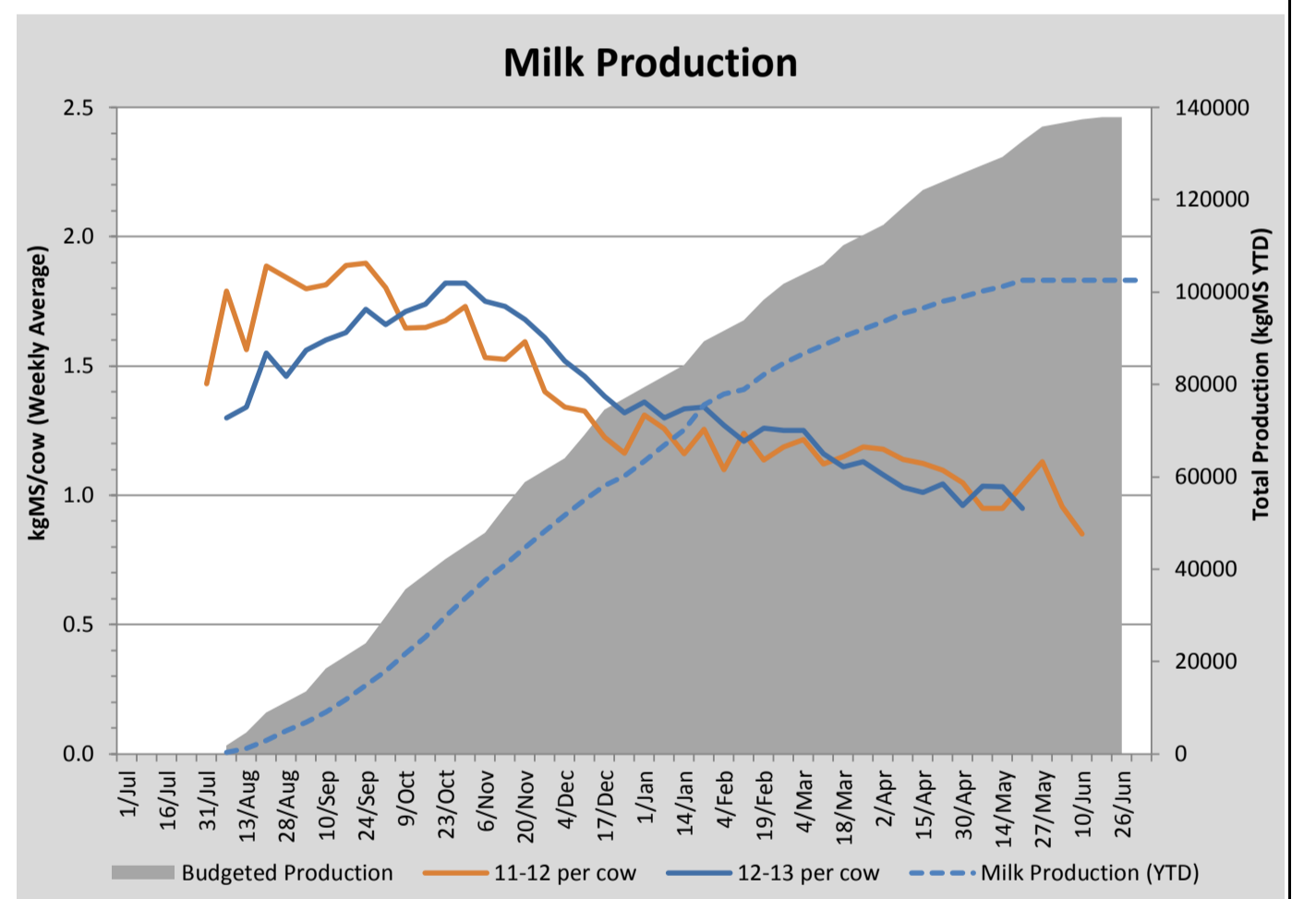
Key Summary Points

- 1 Average soil temperature (10cm) has risen to 9.3°C this week which has seen a significant increase in pasture growth rates and average pasture cover
- 2 Body condition score has improved over the entire herd since dry off
- 3 Some mild cases of bloat and acidosis have been observed in cows grazing kale

| PASTURE INFORMATION | Farm | | | Irrigated | | | Rain-fed | | |
|---------------------------------------|-----------|-----------|-----------|-----------|-----------|-----------|-----------|-----------|-----------|
| | Last Week | This Week | Variation | Last Week | This Week | Variation | Last Week | This Week | Variation |
| Grazed milking area (ha) | 110.5 | 110.5 | 0.0 | 41.0 | 41.0 | 0.00 | 69.5 | 69.5 | 0.00 |
| Rotation Length (days) | 194 | 181 | | 103 | 195 | | 409 | 174 | |
| Grazing allocation per day (ha) | 0.6 | 0.6 | 0.04 | 0.4 | 0.2 | 0.19 | 0.2 | 0.4 | 0.23 |
| Average time since last grazed (days) | 85 | 71 | -14 | 64 | 90 | -26 | 98 | 60 | -38 |
| Leaf appearance rate (days per leaf) | 16 | 16 | 0 | 16 | 16 | 0 | 16 | 16 | 0 |
| Average Pasture Cover (kgDM/ha) | 2247 | 2366 | 119 | 2366 | 2409 | 44 | 2177 | 2340 | 164 |
| Pasture Growth Rate (kgDM/ha/day) | 15 | 36 | 21 | 15 | 35 | 20 | 14 | 36 | 22 |
| Post Grazing Biomass (kgDM/ha) | 1350 | 1400 | 50 | | | | | | |
| Nitrogen applied YTD (kgN/ha) | 254 | 254 | 0 | 0 | 0 | 0 | 0 | 0 | 0 |

*Please note all pasture calculations detailed above are based on the current Grazed Milking Area

| MILK PRODUCTION | Last Week | This Week | Variation |
|------------------------------|-----------|-----------|-----------|
| No cows in milk (vat) | 0 | 0 | 0.00 |
| Litres per cow | #N/A | #N/A | #N/A |
| % Fat | #N/A | #N/A | #N/A |
| % Protein | #N/A | #N/A | #N/A |
| MS/cow/day | #N/A | #N/A | #N/A |
| MS/ha/day | #N/A | #N/A | #N/A |
| BMCC | #N/A | #N/A | #N/A |
| Average Liveweight (kg) | | | |
| | Budget | To Date | Variation |
| Total Milk Production (kgMS) | 137874 | 102526 | 74% |
| MS/ha YTD | 1231 | #N/A | #N/A |



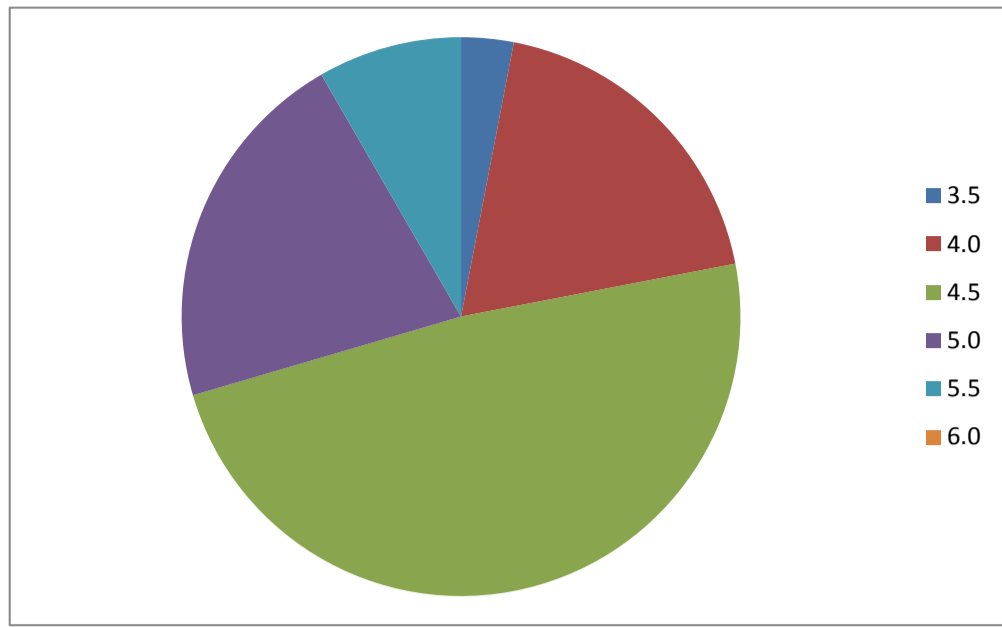


Figure 1. Body condition score of dry cows as of 23rd May 2013

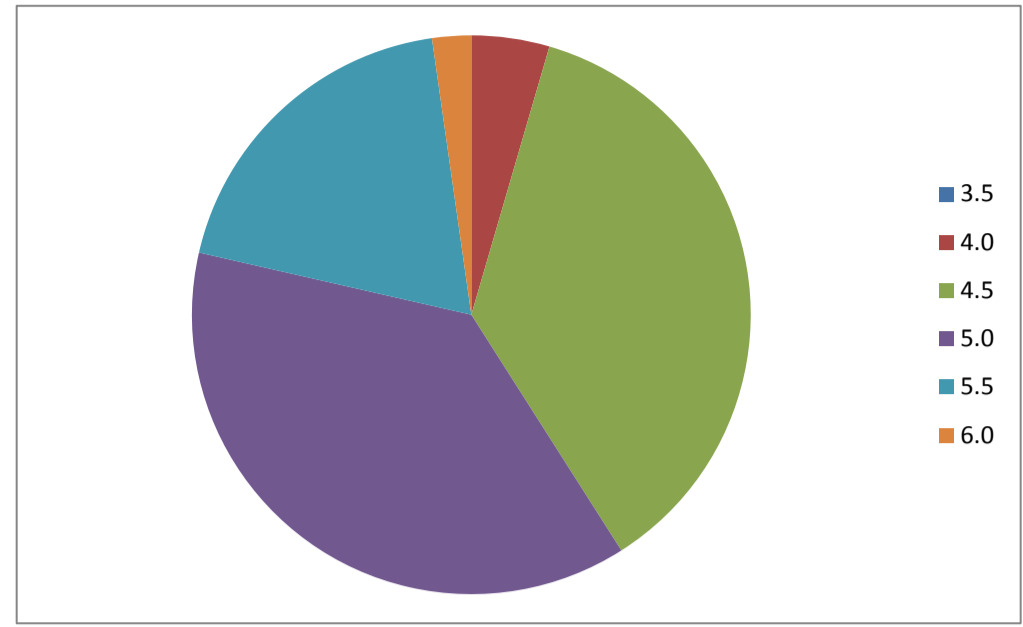
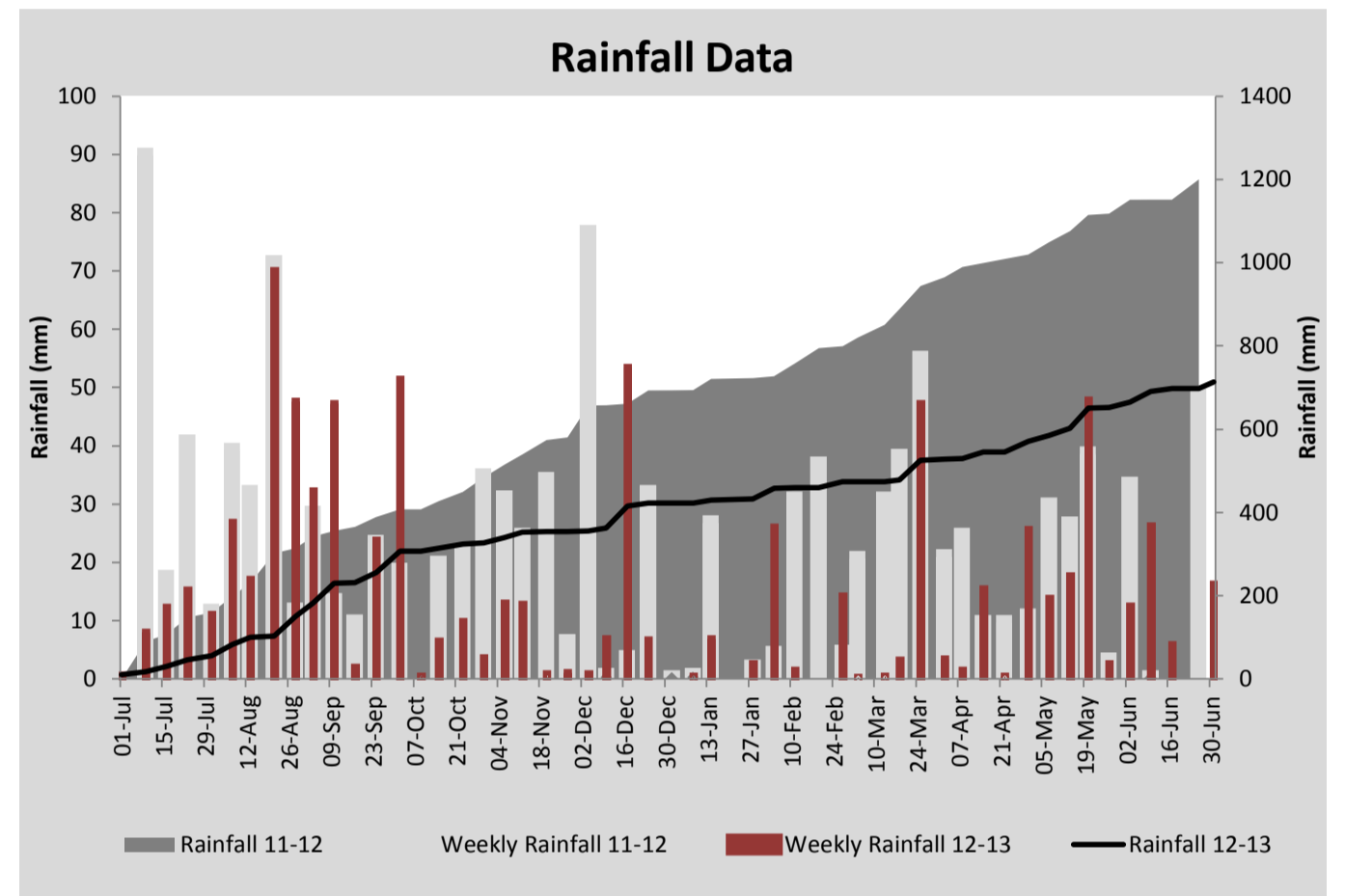
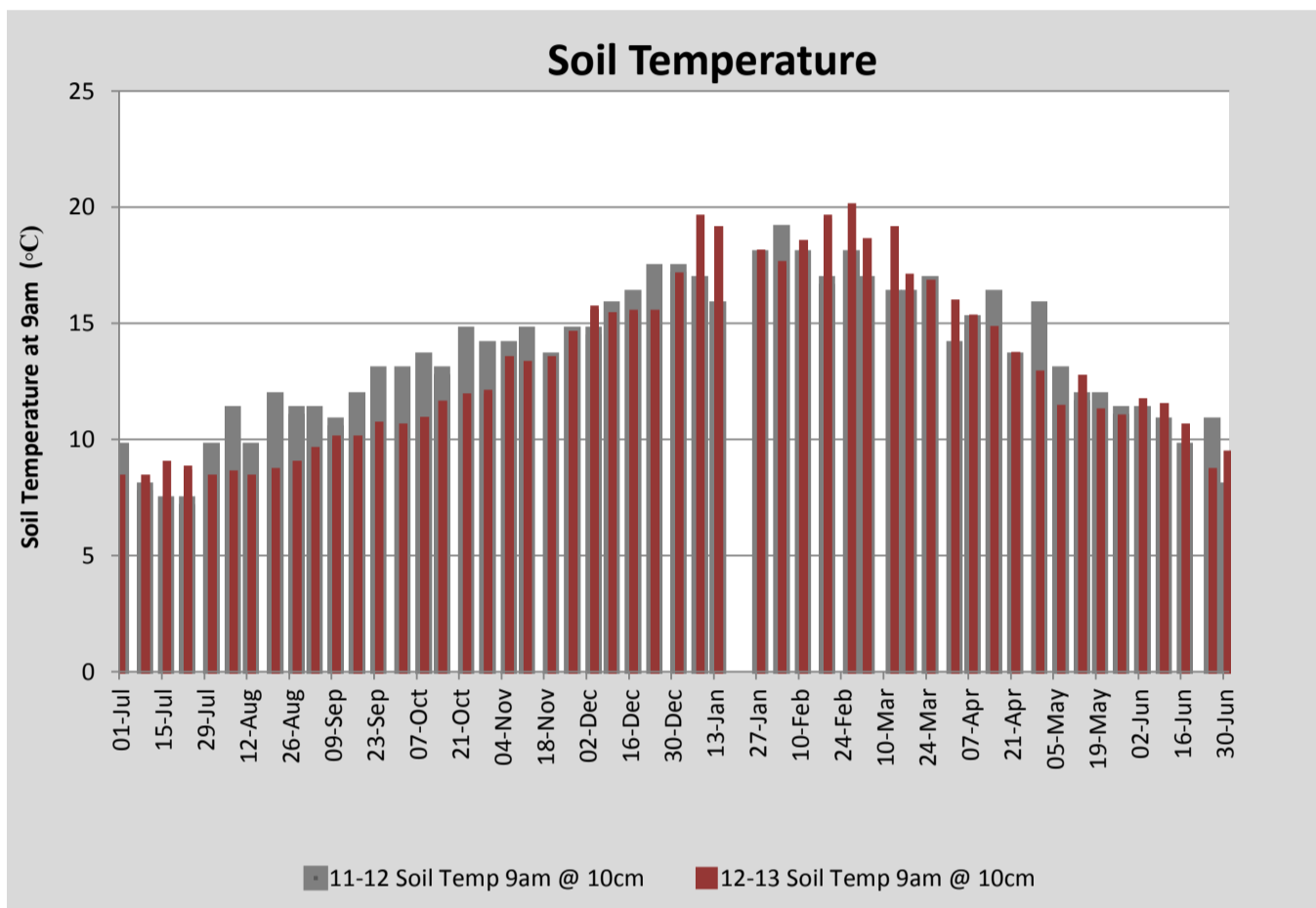


Figure 2. Body condition score of dry cows as of 1st July 2013



| Analysis | | | |
|--|----|---------------------------|------|
| Expected growth rate next 7 days (kgDM/ha/day) | 20 | Target Leaf Grazing Stage | 3.0 |
| Total Demand from Pasture (kgDM/ha/day) | 9 | Predicted APC 7 days time | 2446 |
| APC balance (kgDM/ha/day) | 11 | Predicted APC Change | 80.0 |

Discussion

Warmer soil temperatures have seen pasture growth rates and average pasture cover increase this week. All cows have been condition scored and the data shows improvement over the entire herd (as per figures 1 & 2 above). A few mild cases of bloat and acidosis have been observed in cows grazing kale. To manage this, the pasture and straw components of the ration are being allocated in the morning to insure sufficient fibre intake before the cows are shifted onto a fresh break of kale. Cows are removed from the crop after 2 hours grazing (back to pasture or onto stand-off ground) to reduce the risk of breakouts into the crop. Cows displaying acidosis symptoms have been removed to pasture/roughage for a few days before being returned to the herd.

1 July 2013

