

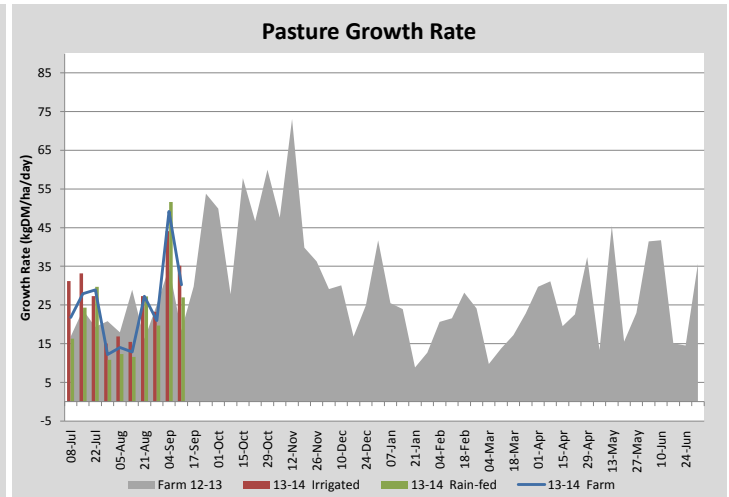
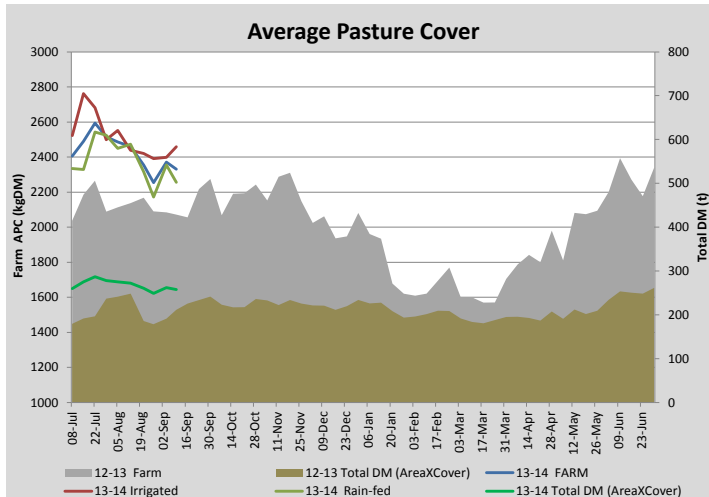
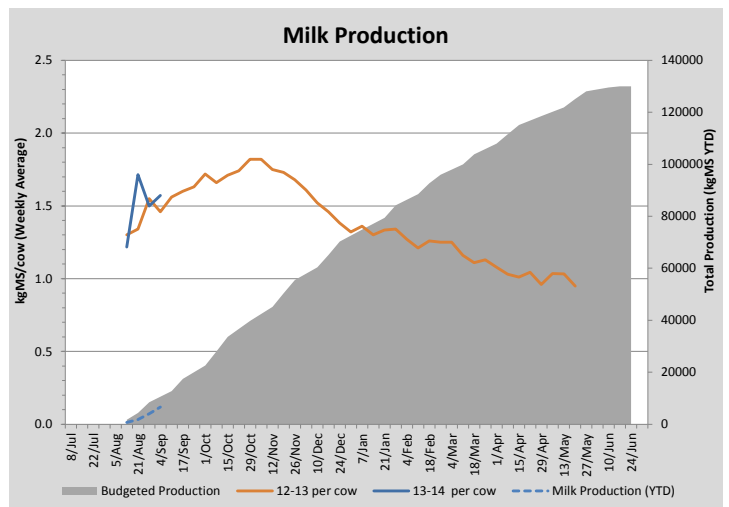
## Key Summary Points

- 1** Average pasture cover has increased to 2370kg
- 2** Target rotation for the coming week is 40 days
- 3** A protein deficit may exist in the current ration due to low crude protein levels in pasture

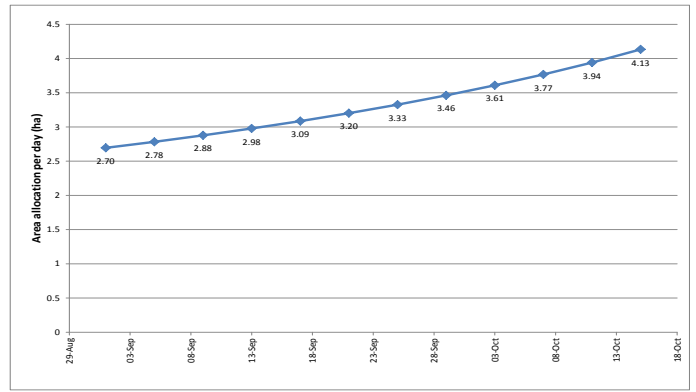
PASTURE INFORMATION	Farm			Irrigated			Rain-fed		
	Last Week	This Week	Variation	Last Week	This Week	Variation	Last Week	This Week	Variation
Grazed milking area (ha)	110.5	110.5	0.0	41.0	41.0	0.00	69.5	69.5	0.00
Rotation Length (days)	92	58	34	103	137	34	87	43	43
Grazing allocation per day (ha)	1.2	1.9	0.70	0.4	0.3	0.10	0.8	1.6	0.80
Average time since last grazed (days)	80	103	23	80	90	10	80	110	30
Leaf appearance rate (days per leaf)	16	16	0	16	16	0	16	16	0
Average Pasture Cover (kgDM/ha)	2253	2371	118	2391	2398	7	2172	2355	183
Pasture Growth Rate (kgDM/ha/day)	21	49	28	23	44	21	20	52	32
Post Grazing Biomass (kgDM/ha)	1500	1590	90						
Nitrogen applied YTD (kgN/ha)	0	0	0	0	0	0	0	0	0

\*Please note all pasture calculations detailed above are based on the current Grazed Milking Area

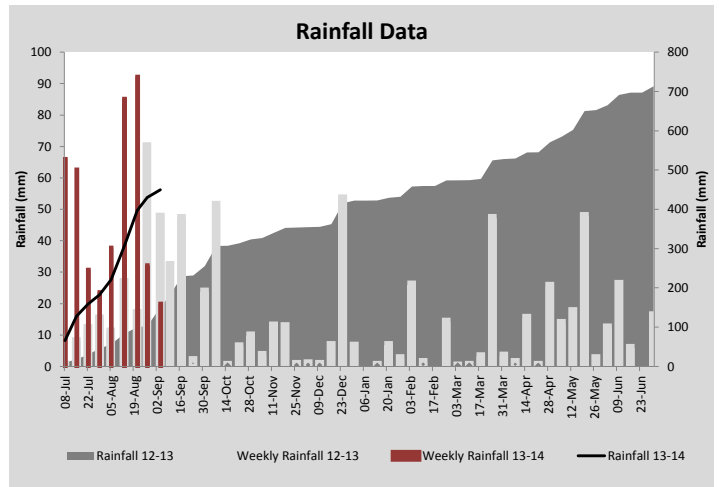
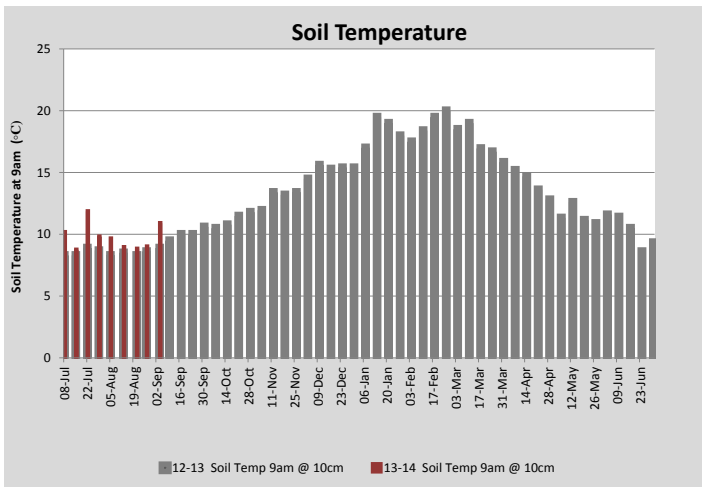
MILK PRODUCTION	Last Week	This Week	Variation
No cows in milk (vat)	183	210	27.00
Litres per cow	20.9	23.5	2.57
% Fat	4.29	3.98	0.31
% Protein	3.21	3.06	0.15
MS/cow/day	1.50	1.57	0.07
MS/ha/day	2.33	2.92	0.59
BMCC	194	143	51.00
Average Liveweight (kg)			
	Budget	To Date	Variation
Total Milk Production (kgMS)	10597	6605	62%
MS/ha YTD	95	60	-35



Last 7 days					
Milkers Diet	kg DM	ME	CP	NDF	\$/cow
Pasture Intake	13.0	11.5	0.0	0.0	0.0
Concentrates	4.0	12.0	0.0	0.0	0.0
Silage	0.0	0.0	0.0	0.0	0.0
Grazed forage	0.0	0.0	0.0	0.0	0.0
Other feeds	0.0	0.0	0.0	0.0	0.0
<b>Total</b>	<b>17</b>	<b>197.5</b>	<b>0</b>	<b>0</b>	<b>0</b>
<b>Target</b>	<b>17</b>		<b>0</b>	<b>0</b>	<b>0</b>



Daily area allocation forecast for the milking platform



Analysis			
Expected growth rate next 7 days (kgDM/ha/day)	30	Target Leaf Grazing Stage	2.5
Total Demand from Pasture (kgDM/ha/day)	33	Predicted APC 7 days time	2347
APC balance (kgDM/ha/day)	-3	Predicted APC Change	-24.1

## Discussion

Average pasture covers have built to 2370kgDM/ha this week, aided by an increase in soil temperature to 10.9°C. With current pasture demand about equal to growth rates, we are expecting average pasture cover to hold or increase over the coming week. The aim for the coming weeks is reduce our pre-grazing covers while pasture growth rates are still moderate so as to maintain quality into spring. To achieve this we will be reducing grain allocation (Non research trial cows) to 3 kgDM/cow/day and increase the pasture allocation to 14kgDM/cow/day, bringing the total allocation to 17kgDM/head/day. All remaining dry cows will be returned to the milking platform to join cows currently being fed 3kg lead feed and 10kg. Target residuals will be lifted to 1600kgDM/ha with a daily allocation of 2.9ha/day (Rotation of 40 days). We will also be looking to start dropping paddocks for silage within the next couple of weeks. Average BMCC continued to drop over to the past week to 143. Fat and protein percentages have decreased and with some cows producing over 30 litres, Rumen8 (nutrition balancing program) has suggested that protein could be limiting in the diet. Pasture samples have been collected to confirm whether this is an issue.

# 4 September 2013

