

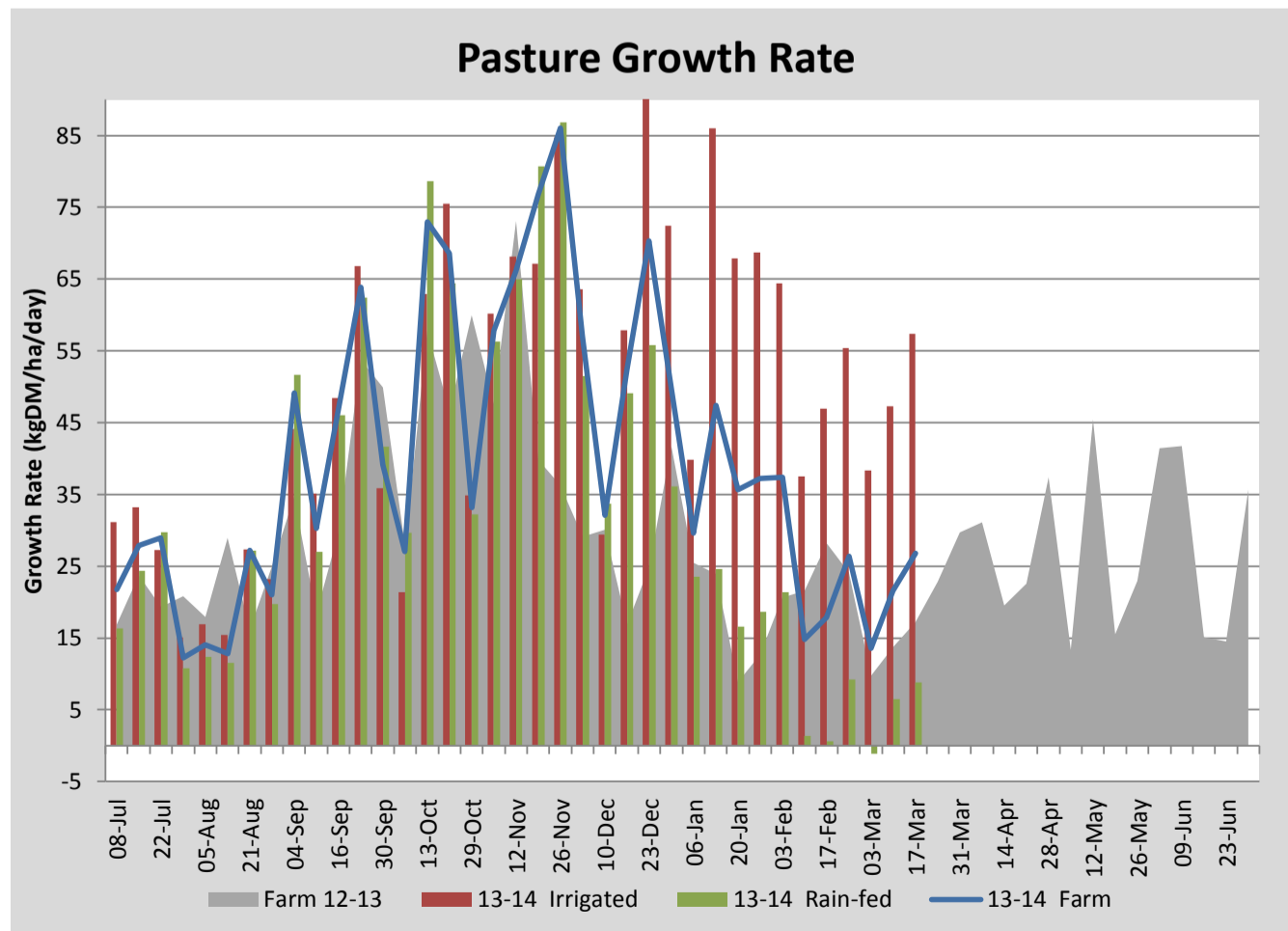
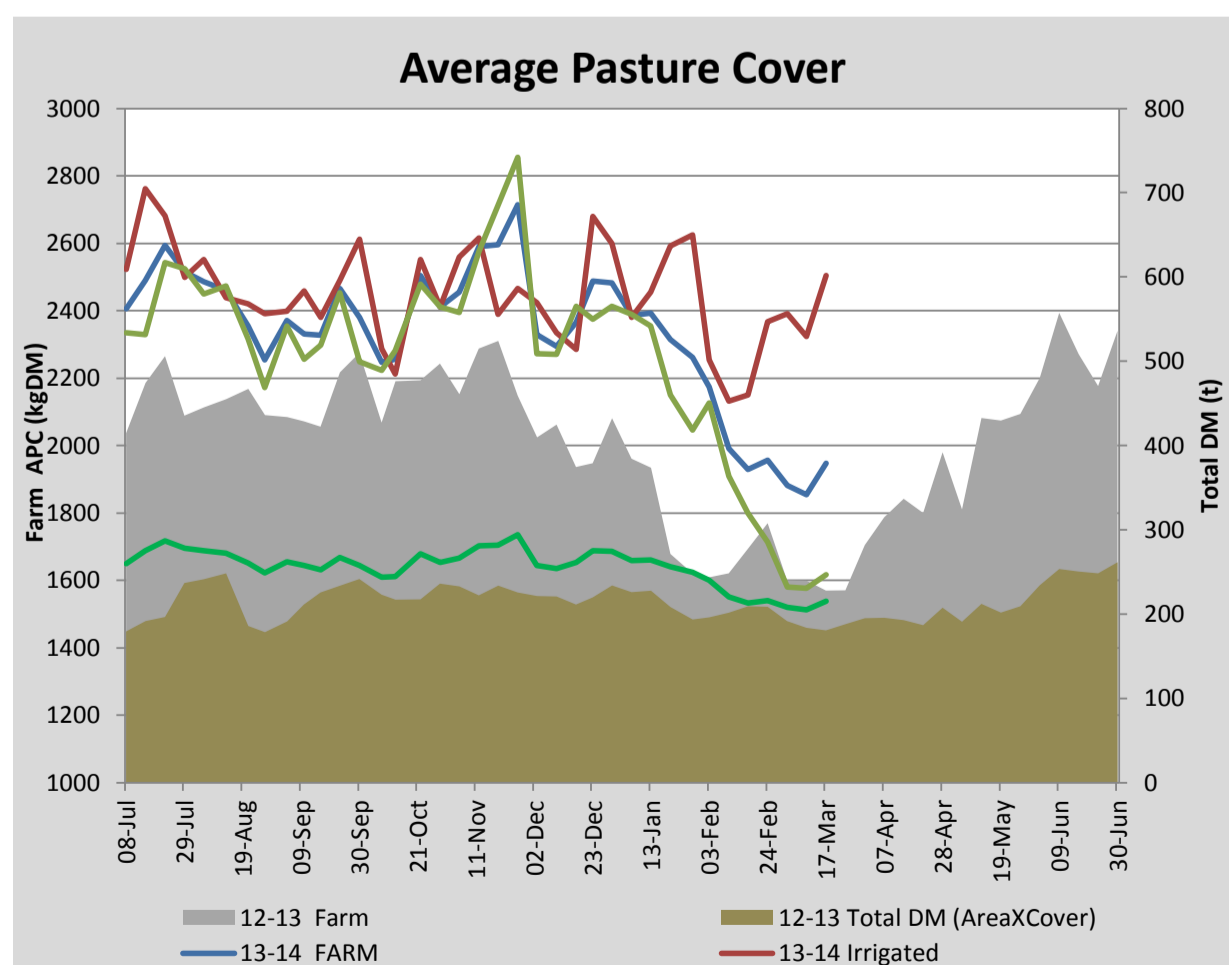
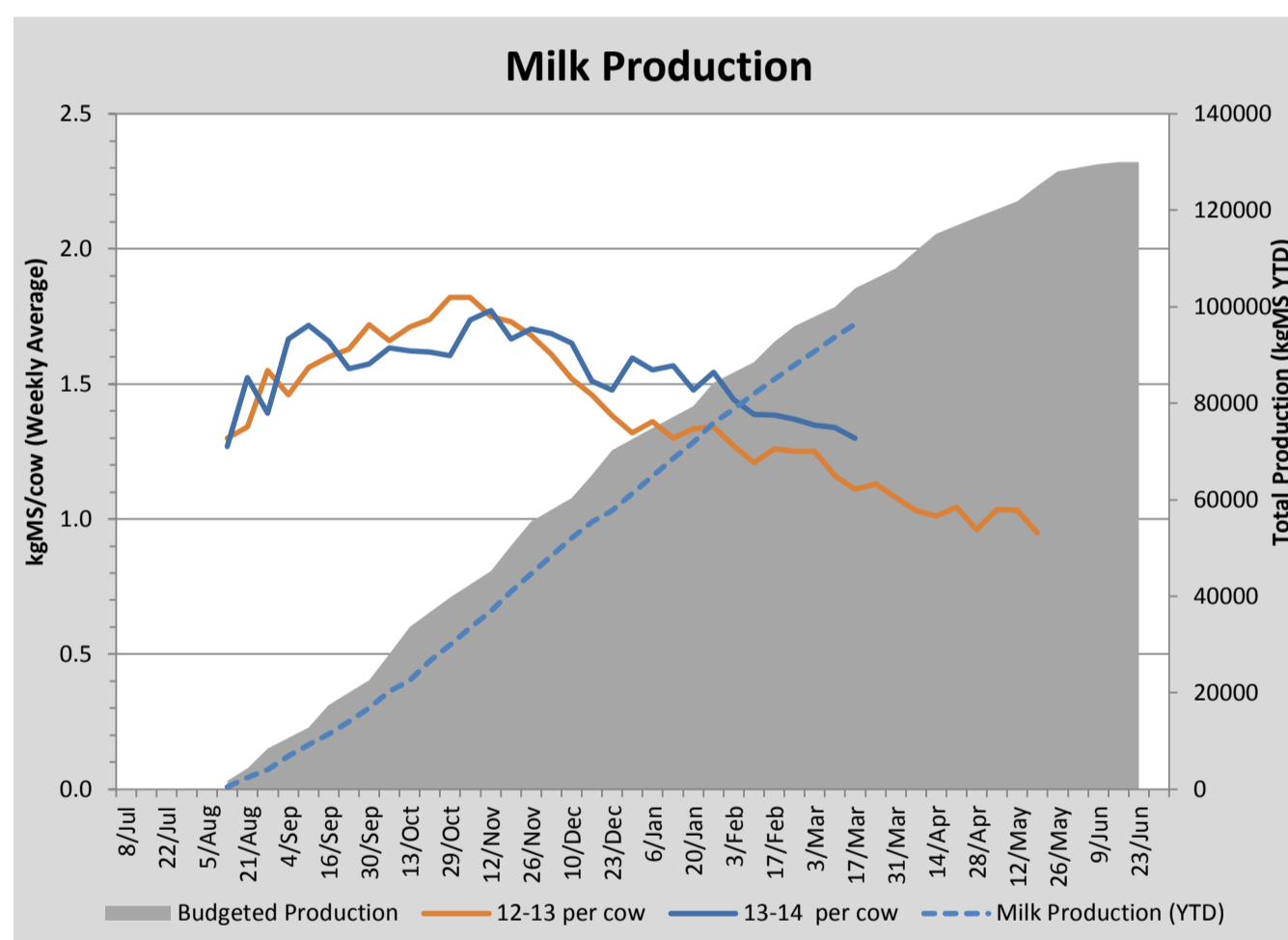
Key Summary Points

- 1 Average pasture cover has increased this week to 1946kgDM/ha with good responses to urea applications on the irrigated ground and some growth occurring on the rain-fed area.
- 2 Per cow milk solid production has dropped to by 0.04kg to 1.3kgMS/cow/day this week.
- 3 The focus for the coming week is to start irrigating some rain-fed paddocks with travelling irrigators (where hydrants are conveniently located) to create some early growth and utilise the remaining water in storage.

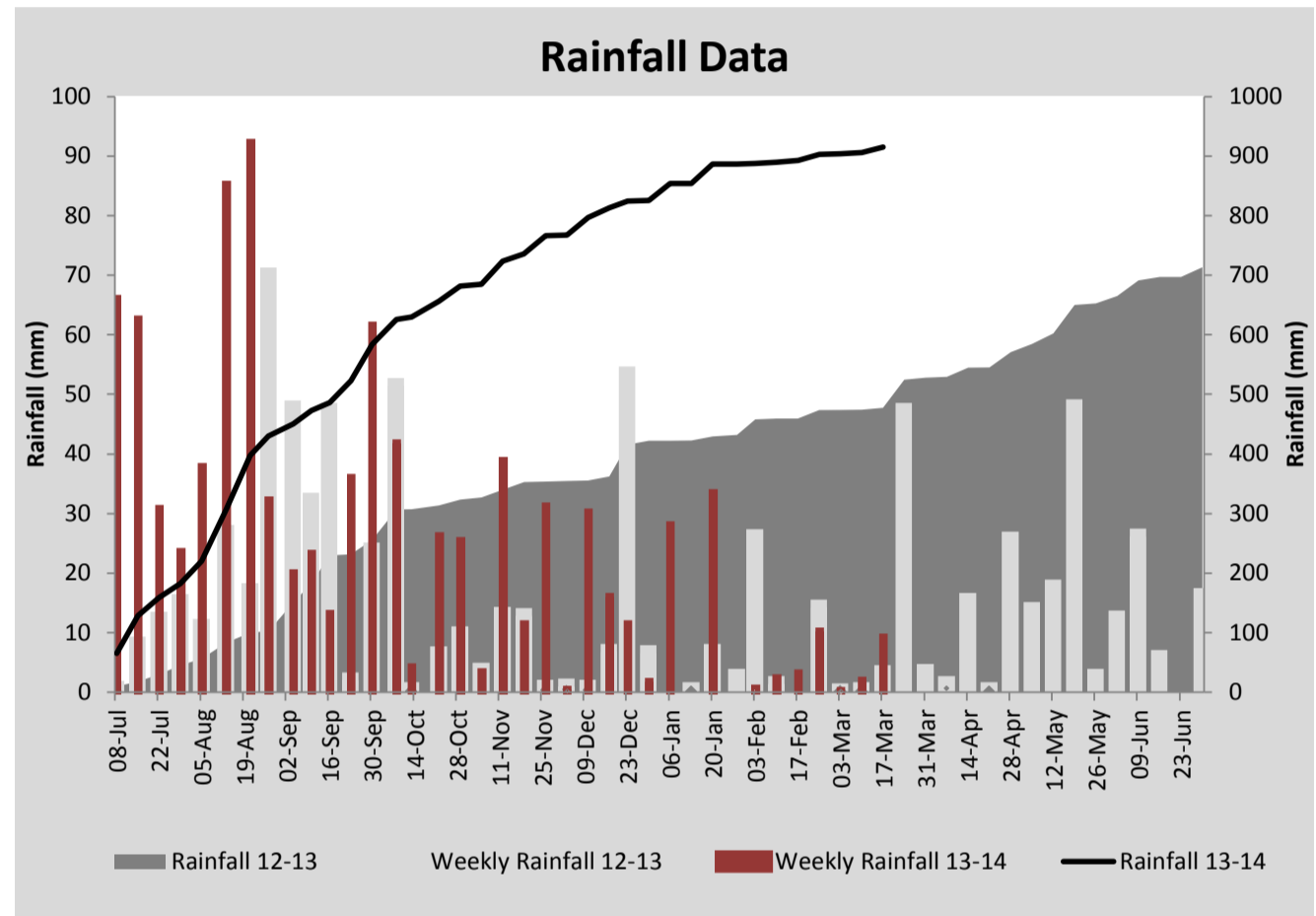
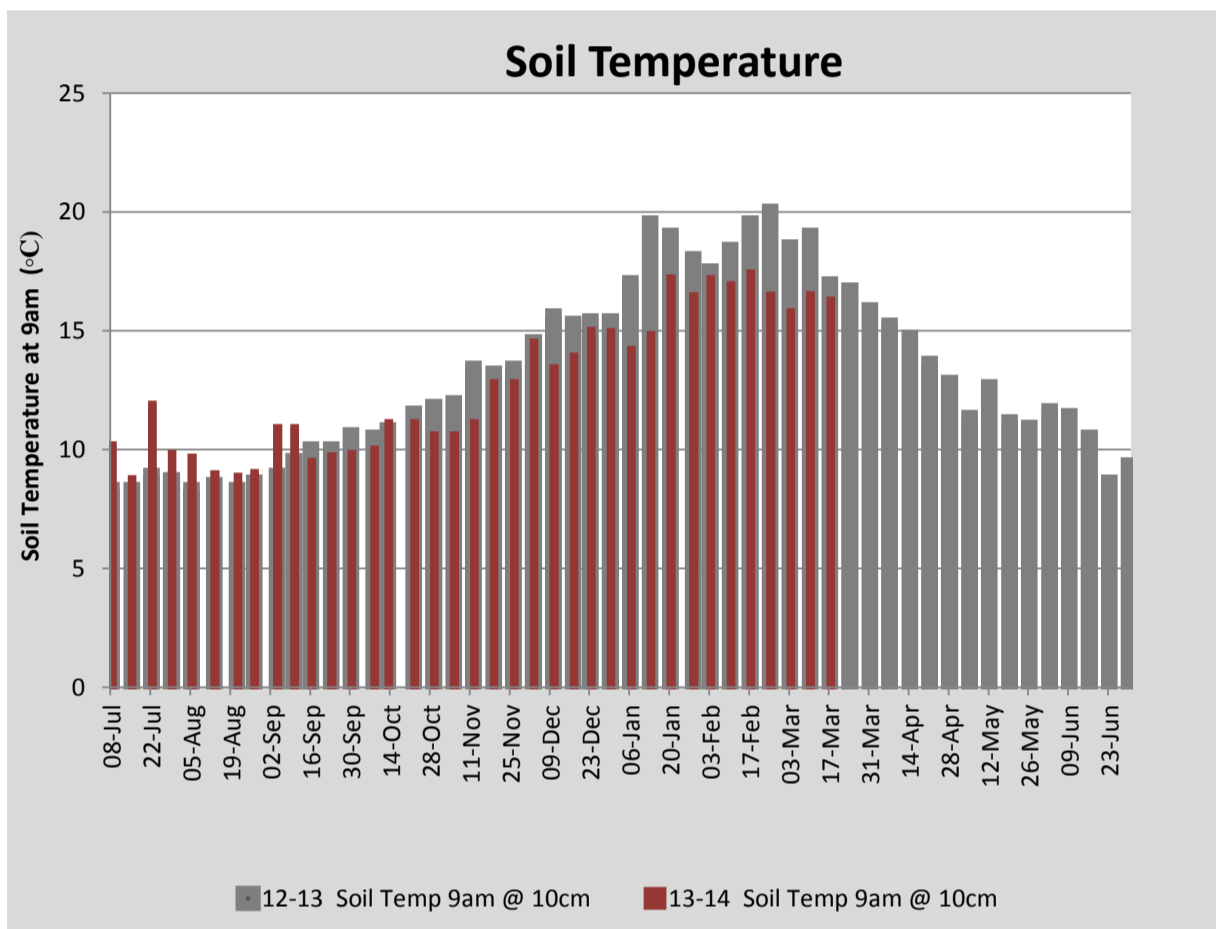
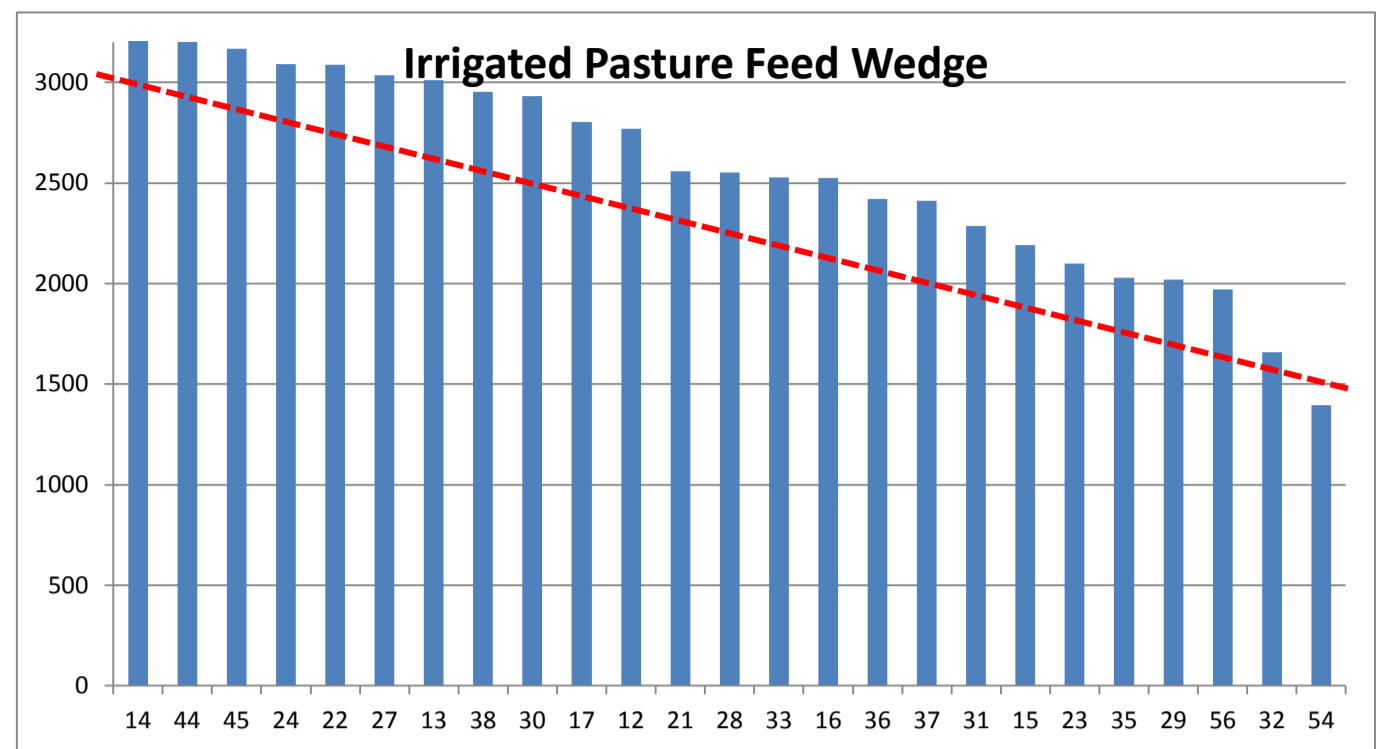
PASTURE INFORMATION	Farm			Irrigated			Rain-fed		
	Last Week	This Week	Variation	Last Week	This Week	Variation	Last Week	This Week	Variation
Grazed milking area (ha)	110.5	110.5	0.0	41.0	41.0	0.0	69.5	69.5	0
Rotation Length (days)	58	92	34	32	41	9	116	347	232
Grazing allocation per day (ha)	1.9	1.2	-0.7	1.3	1.0	-0.3	0.6	0.2	-0.4
Average time since last grazed (days)	38	46	8	32	31	-1	42	55	14
Leaf appearance rate (days per leaf)	20	16	-4	10	10	0	26	19	-7
Average Pasture Cover (kgDM/ha)	1854	1946	92	2324	2504	180	1577	1617	41
Pasture Growth Rate (kgDM/ha/day)	22	27	5	47	57	10	6	9	2
Post Grazing Biomass (kgDM/ha)	1357	1366	9						
Nitrogen applied YTD (kgN/ha)	113	113	0	14	0	-14	0	0	0

*Please note all pasture calculations detailed above are based on the current Grazed Milking Area

MILK PRODUCTION	Last Week	This Week	Variation
Average No. cows in milk (vat)	305	302	-3
Litres per cow	16.6	16.0	-0.6
% Fat	4.65	4.73	0.08
% Protein	3.41	3.37	-0.04
MS/cow/day	1.34	1.30	-0.04
MS/ha/day	3.61	3.47	-0.14
BMCC	129	171	42
Average Liveweight (kg)	521	524	3
	Budget	To Date	Variation
Total Milk Production (kgMS)	103,851	96,383	93%
MS/ha YTD	927	906	-22



Last 7 days					
Milkers Diet	kg DM	MJ ME	CP (%)	NDF (%)	\$/cow
Pasture Intake	6.4	11.4	25.8	41.0	0.0
Concentrates	5.0	13.0	11.0	21.0	0.0
Silage	4.6	11.1	13.6	54.8	0.0
Grazed forage	0.0	0.0	0.0	0.0	0.0
Other feeds	0.0	0.0	0.0	0.0	0.0
Total	16	189	17.7	38.7	0
Target		191	16-18	>33	0



Analysis			
Expected growth rate next 7 days (kgDM/ha/day)	25	Target Leaf Grazing Stage	3.0
Total Demand from Pasture (kgDM/ha/day)	18	Predicted APC 7 days time	1994
APC balance (kgDM/ha/day)	7	Predicted APC Change	47.7

Discussion

Average pasture cover has built this week to 1946kgDM/ha. This was achieved by slowing the rotation on the irrigated and rain-fed portions of the platform, reducing the daily allocation to 16kgDM/cow/day and increasing the silage in the diet to 4.6kgDM/head/day. We are seeing good responses to urea applied to the irrigated paddocks on the 5th of March. With the irrigated APC sitting at 2500kgDM/ha we will look to increase the daily DM allocation this coming week back to 16.5kgDM/cow/day and reduce the silage in the diet to 3.5kg/head/day. This coming week we will start irrigating some rain-fed paddocks with travellers (where hydrants are conveniently located) to create some early growth and utilise the remaining water in storage. We aim to irrigate 6ha of the run-off and an additional 4ha on the milking platform. With daily evapotranspiration at Elliott averaging about 2mm/day, a 25mm irrigation now on these paddocks along with forecast showers in the coming weeks should see us through to the arrival of the autumn break. Per cow milk solid production continued to decline this week to 1.3kgMS/cow/day. With a few cows dipping below 0.8kgMS/day we will look to dry off some more cows this coming week.

17 March 2014

