

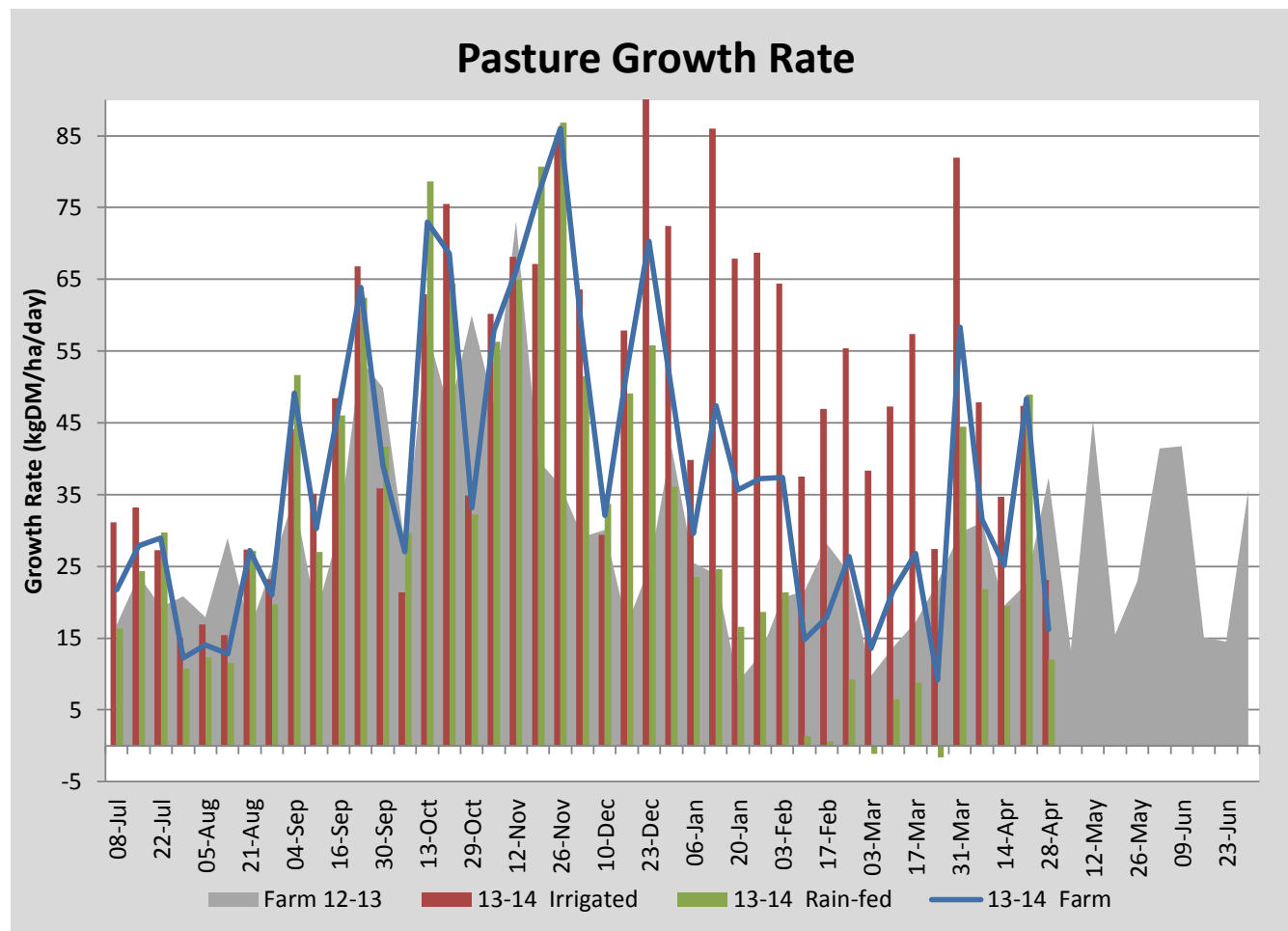
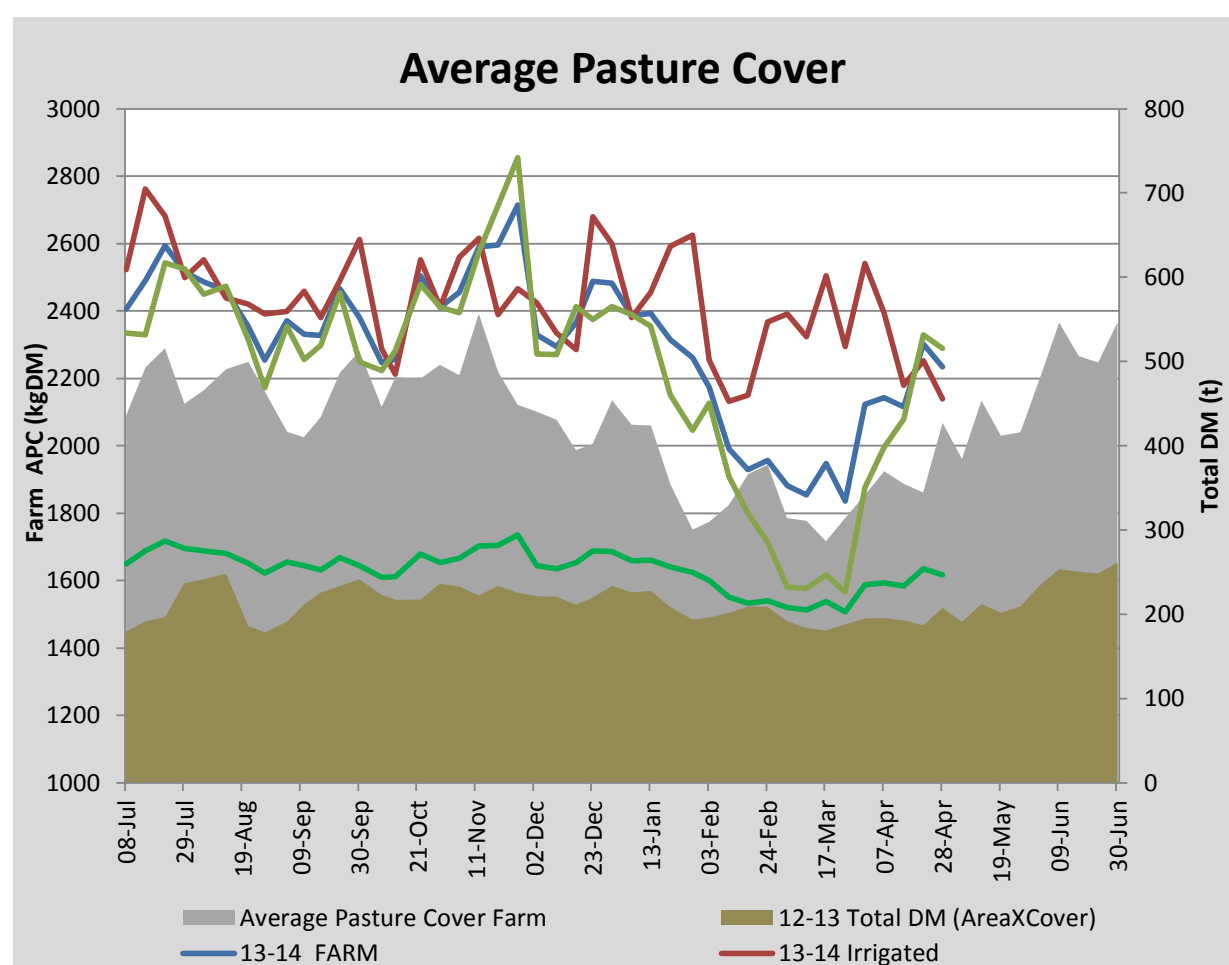
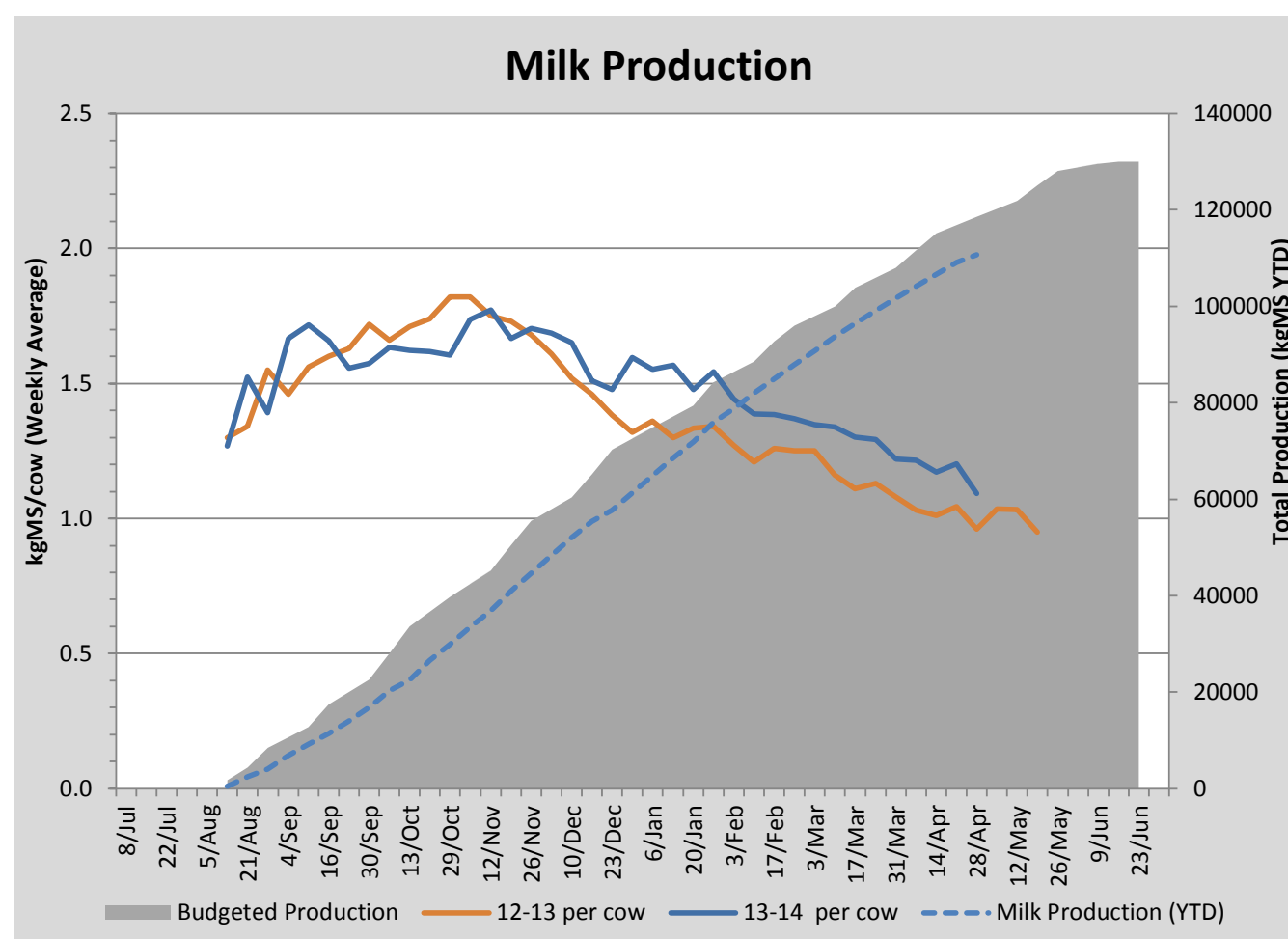
Key Summary Points

- 1 Average pasture cover dropped slightly this week to 2233kgDM/ha with cool overcast conditions limiting growth.
- 2 Per cow milk solid production dropped by 0.11kgMS/day this week.
- 3 Focus for the coming week is to dry off low producing cows and spread urea across the runoff to boost growth on these paddocks.

PASTURE INFORMATION	Farm			Irrigated			Rain-fed		
	Last Week	This Week	Variation	Last Week	This Week	Variation	Last Week	This Week	Variation
Grazed milking area (ha)	110.5	110.5	0.0	41.0	41.0	0.0	69.5	69.5	0
Rotation Length (days)	53	74	21	29	51	22	99	99	0
Grazing allocation per day (ha)	2.1	1.5	-0.6	1.4	0.8	-0.6	0.7	0.7	0.0
Average time since last grazed (days)	46	71	24	32	34	2	55	93	38
Leaf appearance rate (days per leaf)	14	14	0	12	12	0	15	15	0
Average Pasture Cover (kgDM/ha)	2301	2233	-67	2253	2140	-113	2329	2289	-40
Pasture Growth Rate (kgDM/ha/day)	48	16	-32	47	23	-24	49	12	-37
Post Grazing Biomass (kgDM/ha)	1480	1445	-35						
Nitrogen applied YTD (kgN/ha)	136	146	11	0	16	16	0	7	7

*Please note all pasture calculations detailed above are based on the current Grazed Milking Area

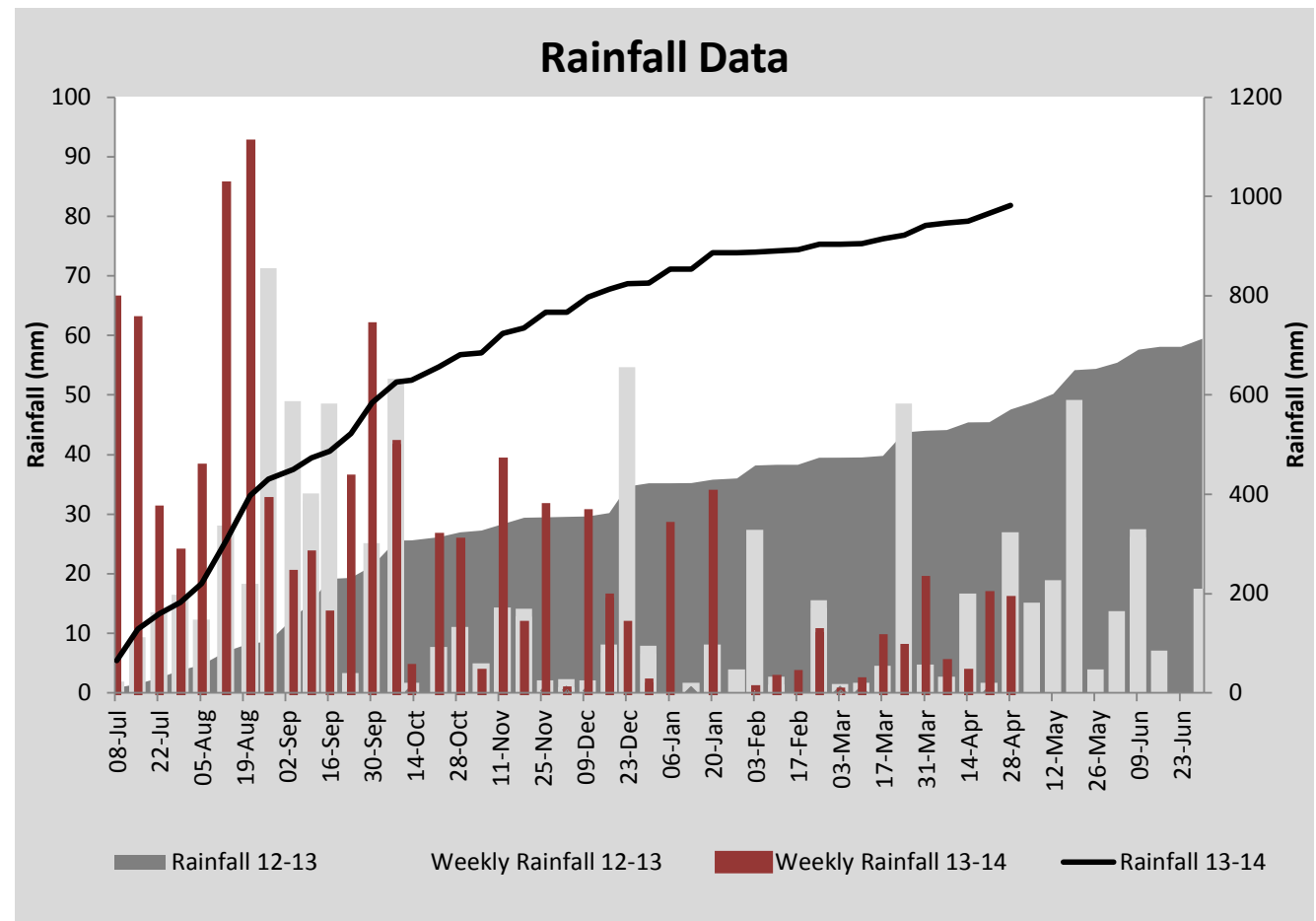
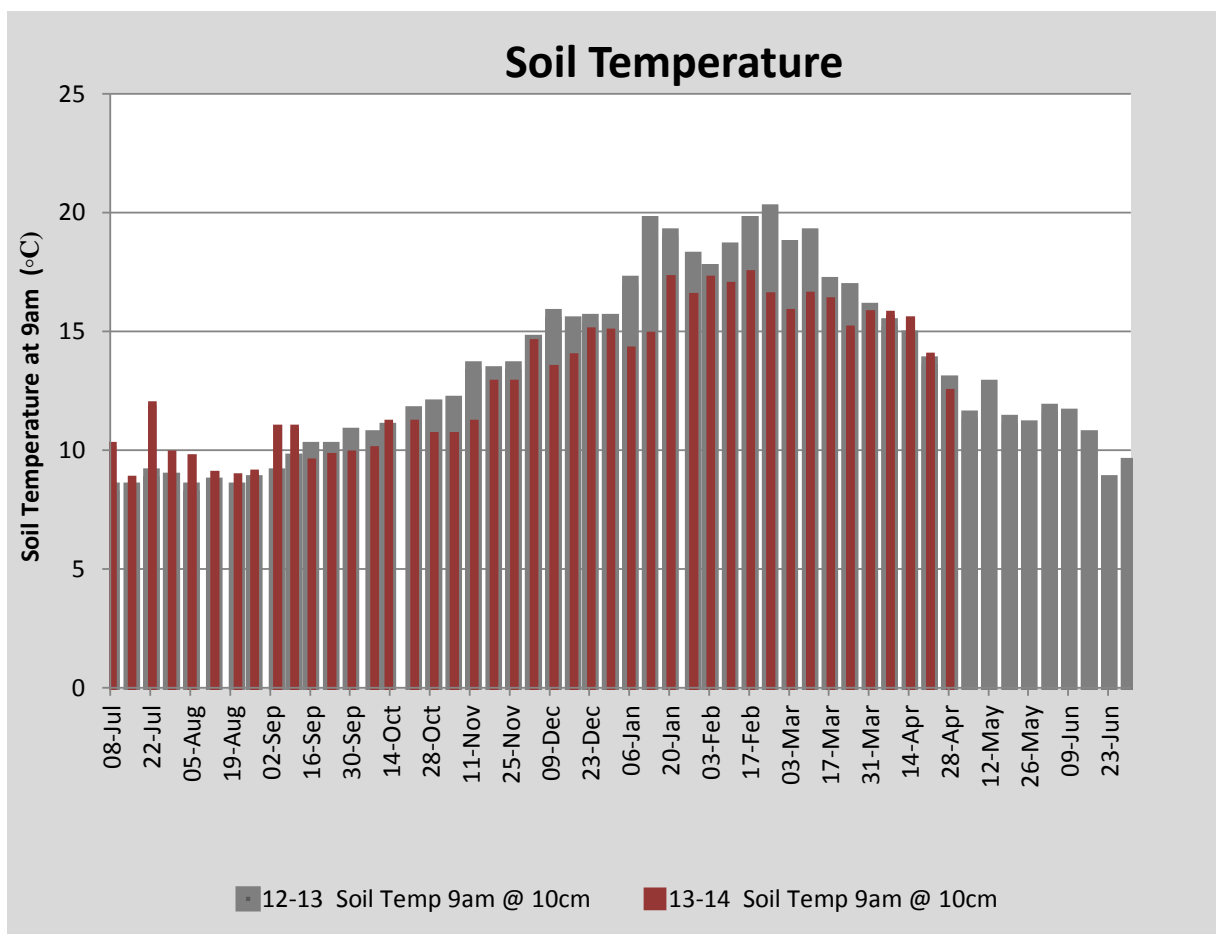
MILK PRODUCTION	Last Week	This Week	Variation
Average No. cows in milk (vat)	298	294	-4
Litres per cow	14.2	12.5	-1.7
% Fat	4.83	5.05	0.22
% Protein	3.69	3.71	0.02
MS/cow/day	1.20	1.09	-0.11
MS/ha/day	3.17	2.84	-0.33
BMCC	156	160	4
Average Liveweight (kg)	528	528	0
	Budget	To Date	Variation
Total Milk Production (kgMS)	118,559	110,753	93%
MS/ha YTD	1059	1041	-17



Last 7 days					
Milkers Diet	kg DM	MJ ME	CP (%)	NDF (%)	\$/cow
Pasture Intake	8.9	11.7	24.0	54.7	0.0
Concentrates	4.9	13.0	11.0	21.0	0.0
Silage	2.7	10.0	13.6	54.8	0.0
Grazed forage	0.0	0.0	0.0	0.0	0.0
Other feeds	0.0	0.0	0.0	0.0	0.0
Total	16.5	194.9	18.4	44.6	0
Target		191	16-18	>33	0



R1 Heifers



Analysis			
Expected growth rate next 7 days (kgDM/ha/day)	20	Target Leaf Grazing Stage	3.0
Total Demand from Pasture (kgDM/ha/day)	25	Predicted APC 7 days time	2200
APC balance (kgDM/ha/day)	-5	Predicted APC Change	-33.6

Discussion

Average pasture cover dropped slightly this week to 2233kgDM/ha with cool overcast conditions limiting average growth to 16kgDM/ha/day. We will apply nitrogen (urea) at 40 units per ha to all grazed paddocks on both the milking platform and runoff this coming week to try to build cover ahead of winter. Average per cow milksolid production has dropped to 1.09kgMS/cow/day this week. This drop was due to trouble with the dairy feed system and subsequent under feeding on a few days last week. We will look to dry off more cows next week based on production.

28 April 2014

