

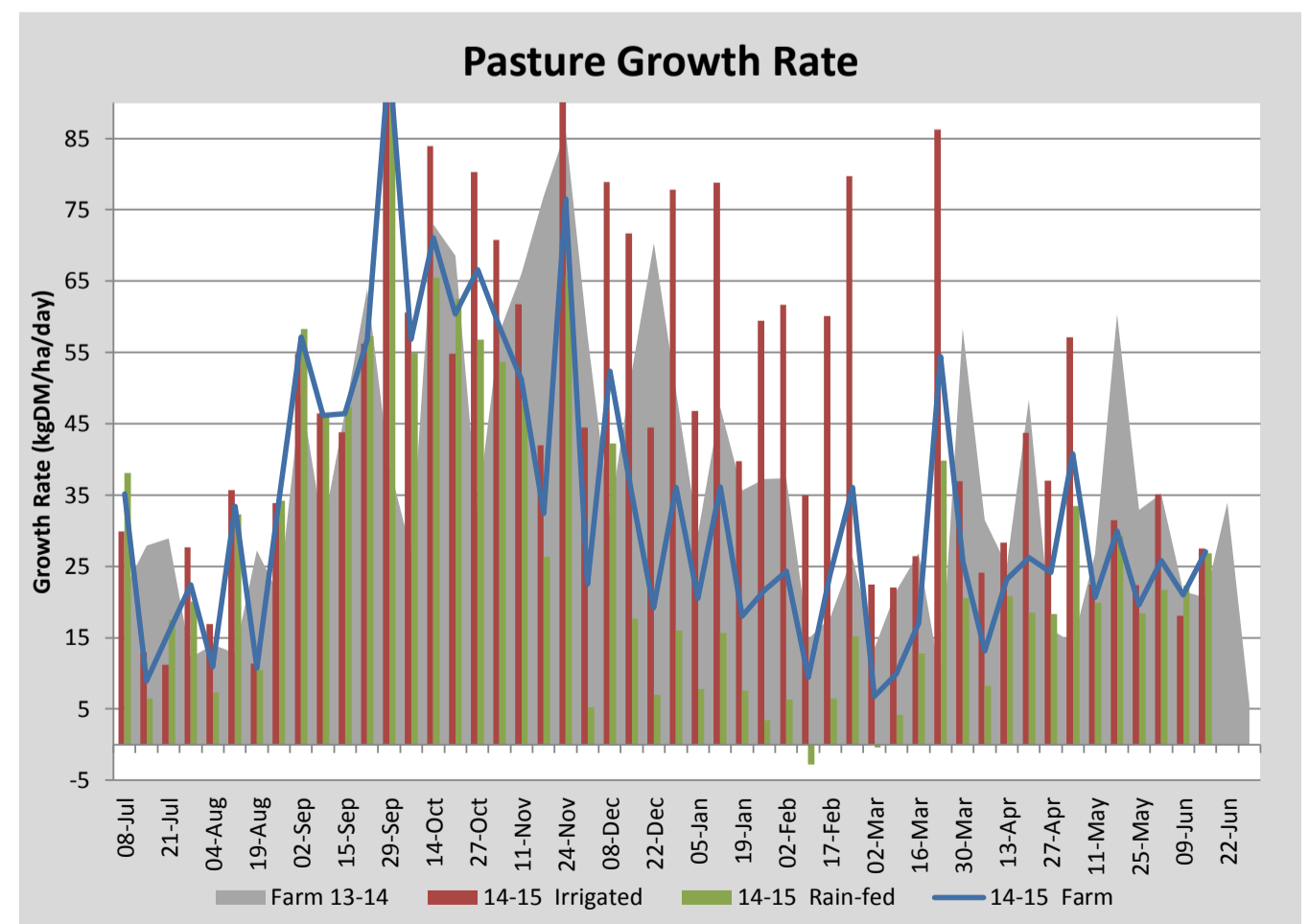
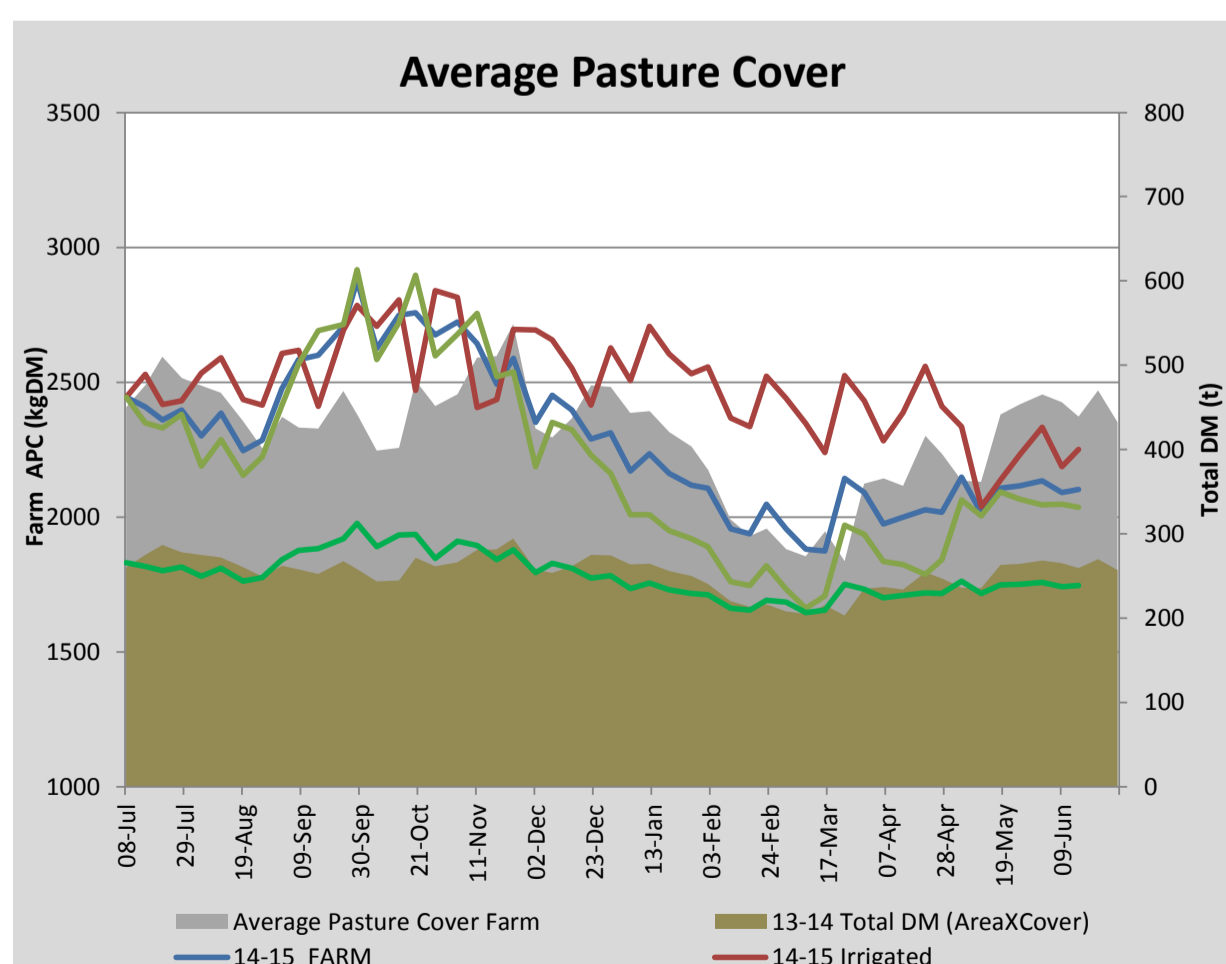
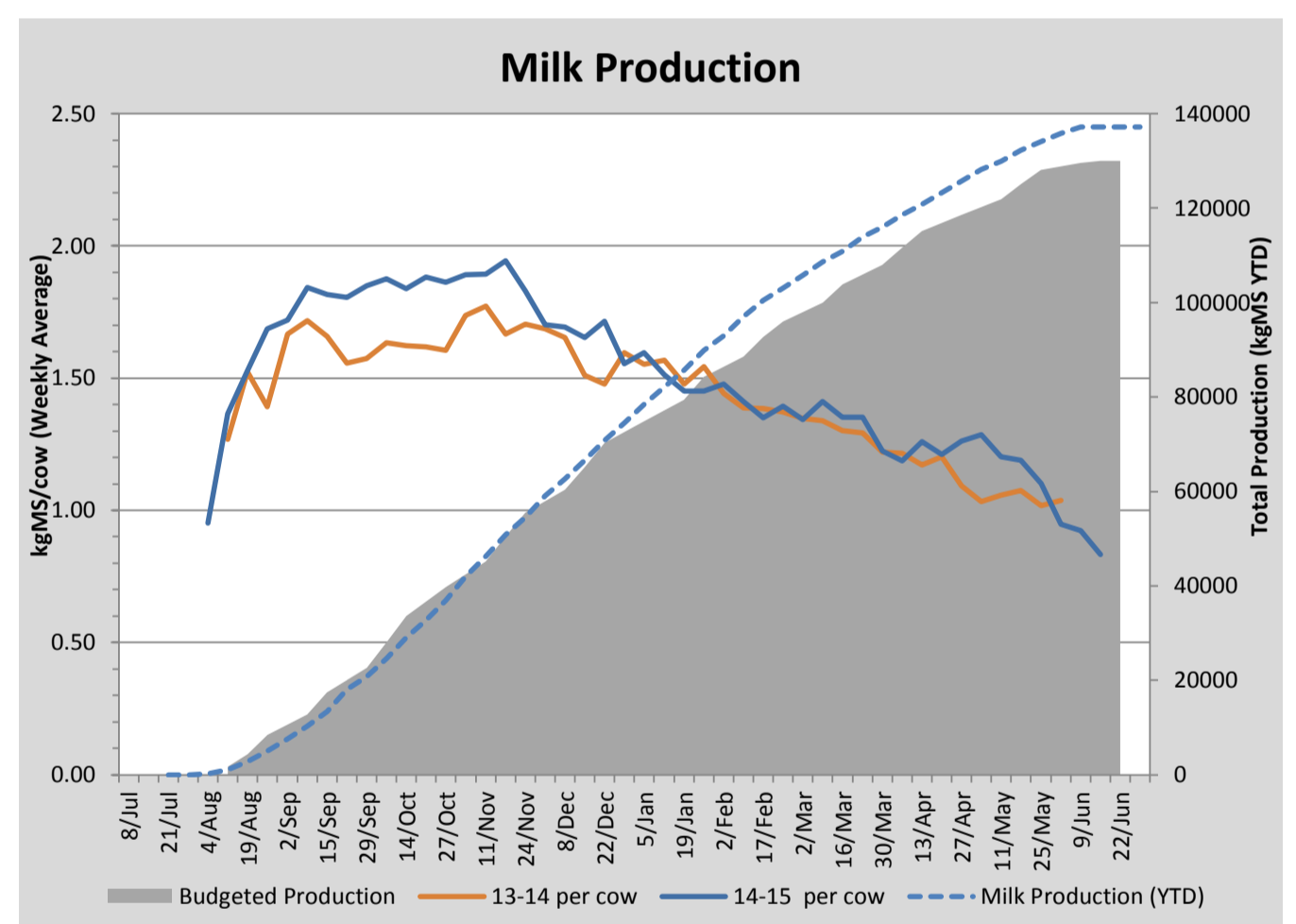
Key Summary Points

- 1** Average pasture cover increased slightly this week to 2102kgDM/ha with milder weather conditions contributing to better growth rates.
- 2** All remaining cows were dried off last Wednesday, with 157 cows being sent off farm on agistment.
- 3** Low condition score cows (>4.5) and R2 heifers are being allocated 14kgDM/head/day pasture and cows above BCS 4.5 are being allocated 12kgDM/cow/day.

PASTURE INFORMATION	Farm			Irrigated			Rain-fed		
	Last Week	This Week	Variation	Last Week	This Week	Variation	Last Week	This Week	Variation
Grazed milking area (ha)	113.6	113.6	0.0	35.1	35.1	0.0	78.4	78.4	0
Rotation Length (days)	57	71	14	88	88	0	49	65	16
Grazing allocation per day (ha)	2.0	1.6	-0.4	0.4	0.4	0.0	1.6	1.2	-0.4
Average time since last grazed (days)	58	68	10	40	75	35	66	65	-1
Leaf appearance rate (days per leaf)	17	17	0	20	20	0	16	16	0
Average Pasture Cover (kgDM/ha)	2090	2102	12	2186	2250	64	2047	2036	-11
Pasture Growth Rate (kgDM/ha/day)	21	27	6	18	28	9	22	27	5
Post Grazing Biomass (kgDM/ha)	1575	1403	-172						
Nitrogen applied YTD (kgN/ha)	171	171	0	0	0	0	0	0	0

*Please note all pasture calculations detailed above are based on the current Grazed Milking Area

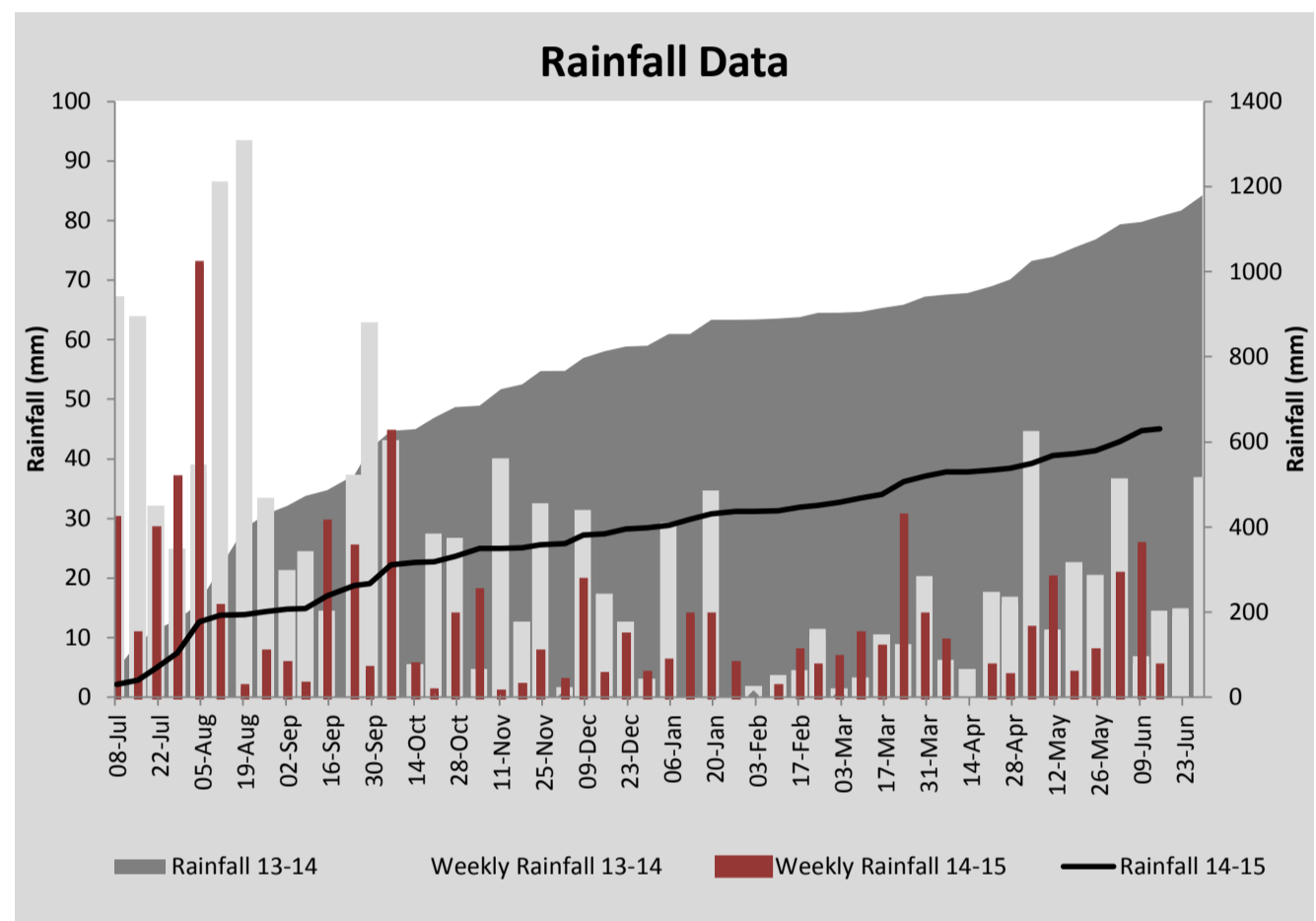
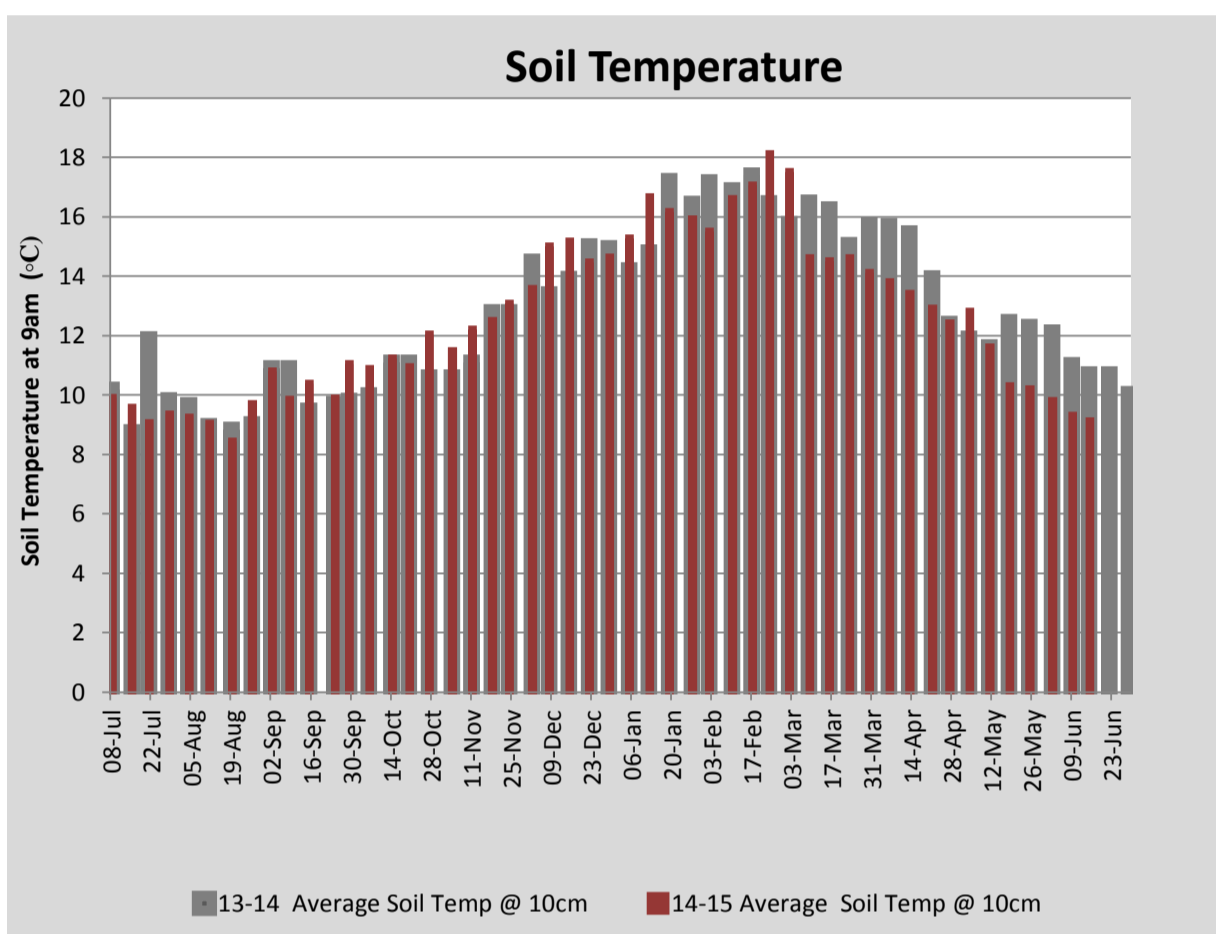
MILK PRODUCTION	Last Week	This Week	Variation
Average No. cows in milk (vat)	208	54	-154
Litres per cow	9.5	8.1	-1.4
% Fat	5.56	6.03	0.47
% Protein	4.28	4.28	0.00
MS/cow/day	0.92	0.83	-0.09
MS/ha/day	1.70	0.40	-1.30
BMCC	220	241	21
Average Liveweight (kg)	546	546	0
	Budget	To Date	Variation
Total Milk Production (kgMS)	130,000	137,159	106%
MS/ha YTD	1161	1248	87



Last 7 days					
Milkers Diet	kg DM	MJ ME	CP (%)	NDF (%)	\$/cow
Pasture Intake	0.0	0.0	0.0	0.0	0.0
Concentrates	0.0	0.0	0.0	0.0	0.0
Silage	0.0	0.0	0.0	0.0	0.0
Grazed forage	0.0	0.0	0.0	0.0	0.0
Other feeds	0.0	0.0	0.0	0.0	0.0
Total	0	0	#DIV/0!	#DIV/0!	0
Target	191	16-18	>33	0	0



Sowing the Tasmanian site of the national forage value index project. This project aims to enable farmers to pick the most suitable ryegrass cultivars for their production system and environment.



Analysis			
Expected growth rate next 7 days (kgDM/ha/day)	25	Target Leaf Grazing Stage	2.5-3.0
Total Demand from Pasture (kgDM/ha/day)	14	Predicted APC 7 days time	2176
APC balance (kgDM/ha/day)	11	Predicted APC Change	74.3

Discussion

Average pasture cover increased slightly to 2102kgDM/ha this week with milder weather conditions contributing to better growth rates (27kgDM/ha/day). With average pasture cover being behind our target of 2200kgDM/ha at dry off, 157 cows have been sent off farm on agistment. By reducing demand across the farm we should be able to build cover on the milking platform to an average cover of 2500kgDM/ha prior to calving (5th August). Urea will be applied to all grazed paddocks across both the run-off and milking platform this coming week at 87kg/ha (40kgN/ha). Low condition score cows (>4.5) and R2 heifers are being allocated 14kgDM/head/day pasture and cows above BCS 4.5 are being allocated 12kgDM/cow/day. R1 heifer calves are receiving 6kgDM/head/day. Other work being completed on farm at the moment includes the clearing of more Cypress pine hedges on the run-off, preparation for the installation of a tipping crush and general dairy R&M.

15 June 2015

