

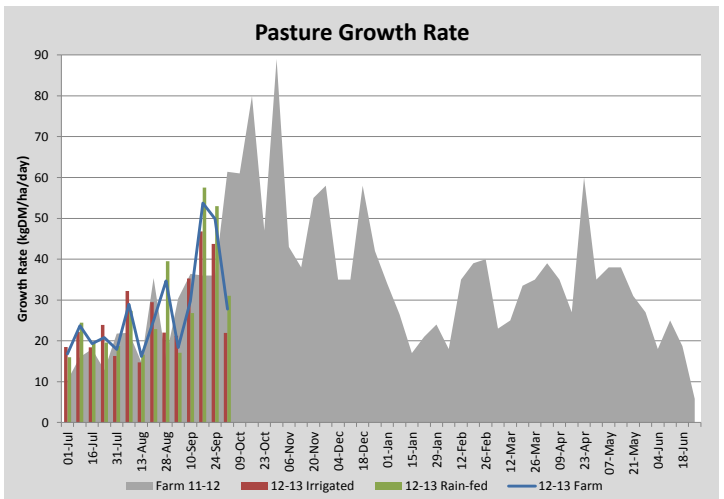
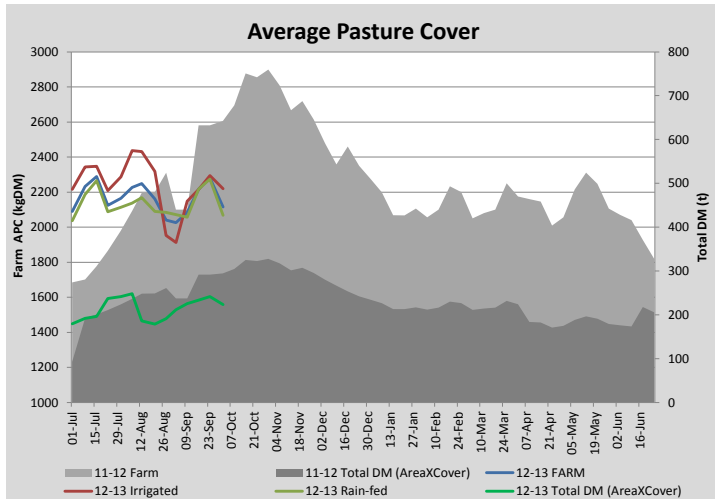
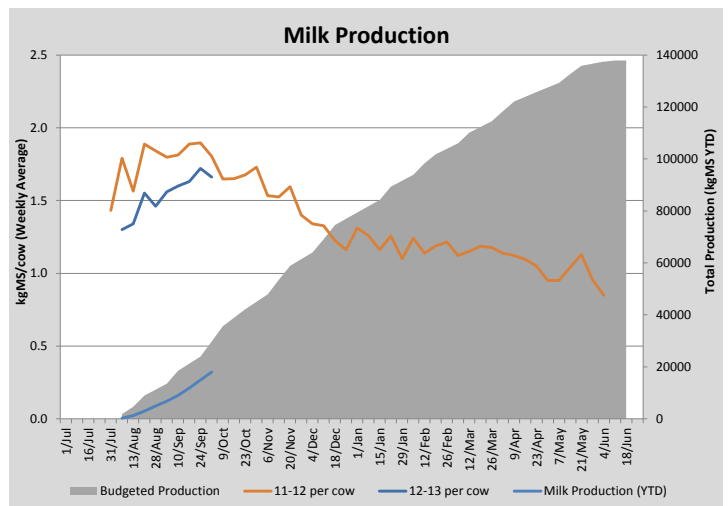
## Key Summary Points

- 1** Growth rates slowed significantly the past 7 days due to some very cold weather.
- 2** With the sun now shining we will attempt maintain pasture quality by speeding up to a 25 day rotation (dropping out 9.9ha for early silage).
- 3** We are busy preparing the irrigation site for the new centre pivot and have successfully walked it 3/4 of the way around

| PASTURE INFORMATION                   | Farm      |           |           | Irrigated |           |           | Rain-fed  |           |           |
|---------------------------------------|-----------|-----------|-----------|-----------|-----------|-----------|-----------|-----------|-----------|
|                                       | Last Week | This Week | Variation | Last Week | This Week | Variation | Last Week | This Week | Variation |
| Grazed milking area (ha)              | 105.9     | 105.4     | 0.5       | 72.6      | 72.1      | 0.51      | 33.3      | 33.3      | 0.00      |
| Rotation Length (days)                | 30        | 30        |           | 18        | 21        |           | 45        | 38        |           |
| Grazing allocation per day (ha)       | 3.5       | 3.5       | 0.00      | 1.9       | 1.6       | 0.30      | 1.6       | 1.9       | 0.30      |
| Average time since last grazed (days) | 40        | 34        | -6        | 40        | 32        | 8         | 40        | 35        | -5        |
| Leaf appearance rate (days per leaf)  | 12        | 11        | -1        | 12        | 11        | -1        | 12        | 11        | -1        |
| Average Pasture Cover (kgDM/ha)       | 2281      | 2116      | -165      | 2294      | 2219      | -76       | 2275      | 2068      | -207      |
| Pasture Growth Rate (kgDM/ha/day)     | 50        | 28        | -22       | 44        | 22        | -22       | 53        | 31        | -22       |
| Post Grazing Biomass (kgDM/ha)        | 1600      | 1600      | 0         |           |           |           |           |           |           |
| Nitrogen applied YTD (kgN/ha)         | 51        | 67        | 16        | 0         | 10        | 10        | 0         | 6         | 6         |

\*Please note all pasture calculations detailed above are based on the current Grazed Milking Area

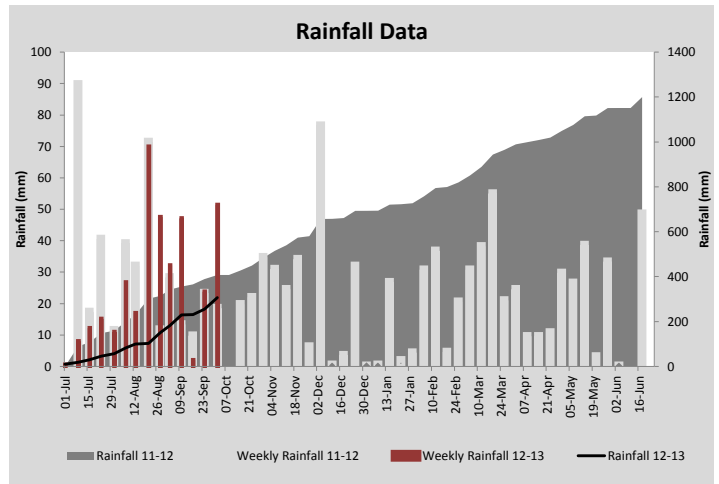
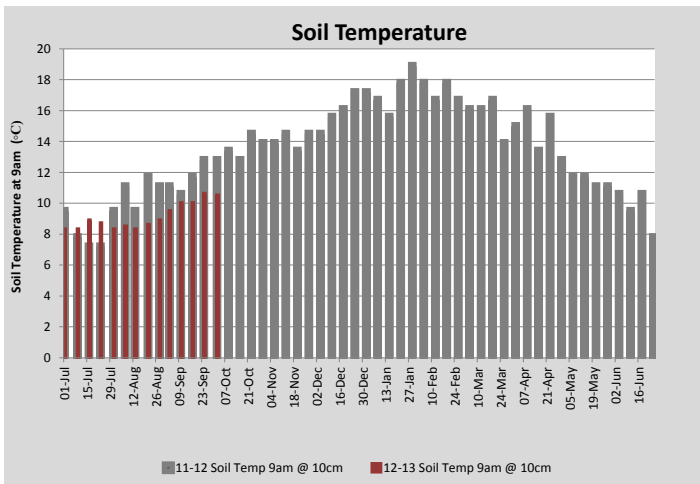
| MILK PRODUCTION             | Last Week | This Week | Variation |
|-----------------------------|-----------|-----------|-----------|
| No cows in milk (vat)       | 270       | 282       | 12.00     |
| Litres per cow              | 24.2      | 24.4      | 0.23      |
| % Fat                       | 3.90      | 3.76      | 0.14      |
| % Protein                   | 3.15      | 3.03      | 0.13      |
| MS/cow/day                  | 1.72      | 1.66      | 0.06      |
| MS/ha/day                   | 3.86      | 3.99      | 0.13      |
| BMCC                        | 287       | 257       | 30.00     |
| Average Liveweight (kg)     |           |           |           |
|                             | Budget    | To Date   | Variation |
| Total Milk Producton (kgMS) | 23959     | 17993     | 75%       |
| MS/ha YTD                   | 265       | 161       | -105      |



| Milkers Diet   | kg DM     | ME           | CP       | NDF      | \$/cow   |
|----------------|-----------|--------------|----------|----------|----------|
| Pasture Intake | 14.5      | 12.5         | 0.0      | 0.0      | 0.0      |
| Concentrates   | 3.5       | 12.0         | 0.0      | 0.0      | 0.0      |
| Silage         | 0.0       | 0.0          | 0.0      | 0.0      | 0.0      |
| Grazed forage  | 0.0       | 0.0          | 0.0      | 0.0      | 0.0      |
| Other feeds    | 0.0       | 0.0          | 0.0      | 0.0      | 0.0      |
| <b>Total</b>   | <b>18</b> | <b>223.3</b> | <b>0</b> | <b>0</b> | <b>0</b> |
| <b>Target</b>  | <b>18</b> |              | <b>0</b> | <b>0</b> | <b>0</b> |



New centre pivot just clearing an existing water trough



| Analysis                                       |    |                           |      |
|--|----|---------------------------|------|
| Expected growth rate next 7 days (kgDM/ha/day) | 60 | Target Leaf Grazing Stage | 2.25 |
| Total Demand from Pasture (kgDM/ha/day)        | 48 | Predicted APC 7 days time | 2197 |
| APC balance (kgDM/ha/day)                      | 12 | Predicted APC Change      | 81.7 |

## Discussion

Hail, sleet and rain over the weekend reduced pasture growth rates and also dipped cow production slightly this week. The hail has even caused visible damage to the plantain in the research trial paddocks. With the weather having improved dramatically we will look to stay on top of pasture quality by speeding up our rotation to 25 days. To do this we will drop out an additional 9.9ha which we will cut for early silage. We will assess covers on these paddocks in 7 days time and make a decision on the best time to cut (weather permitting). However, at this stage we plan to make low yielding early cuts (eg. 3500kgDM/ha standing cover) rather than letting paddocks grow out for an additional period. The key aim of this strategy is to ensure we get paddocks back in the rotation as soon as possible. Soil temperature dipped back to 9.5 °C over the weekend but has stayed steady on average. We are busy preparing our centre pivot for a busy irrigation season and have successfully walked it around 75% of the irrigation site. Some additional bulldozer works will be required to get the remaining area covered and these will be completed in the next few weeks. We will continue to apply nitrogen behind the cows but will reduce the rate to 30kgN/ha.

# 2 October 2012

