

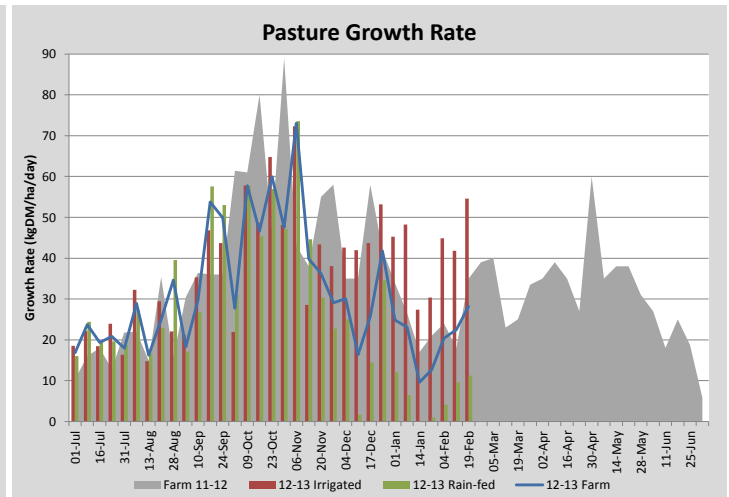
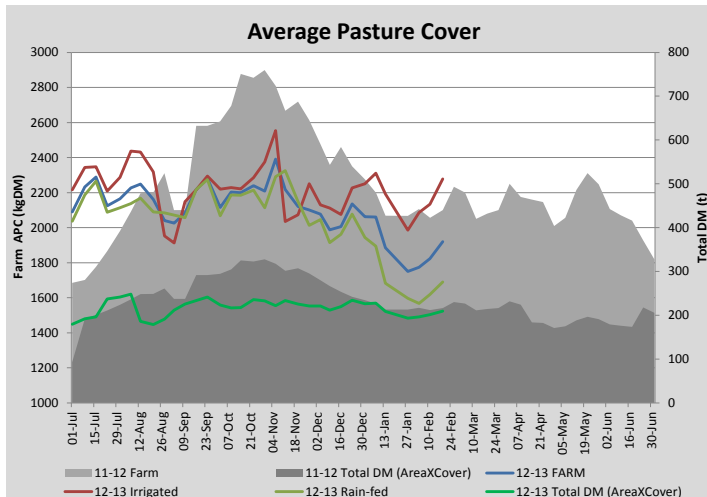
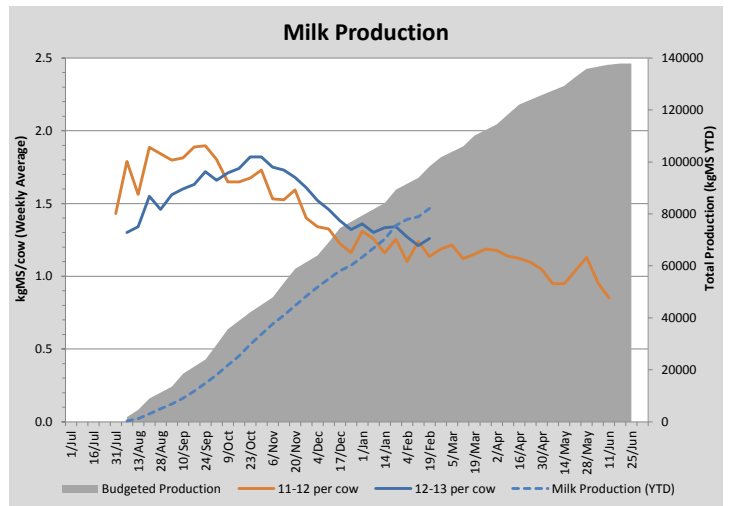
## Key Summary Points

- 1** By reducing the number of milkers we are now able to better feed the remaining cows and per cow production has climbed slightly and the herd is holding weight.
- 2** Irrigated growth rates have been good the last week and many of the rain-fed pastures are also measuring some growth.
- 3** Key focus this week is on careful allocation of remaining irrigation water.

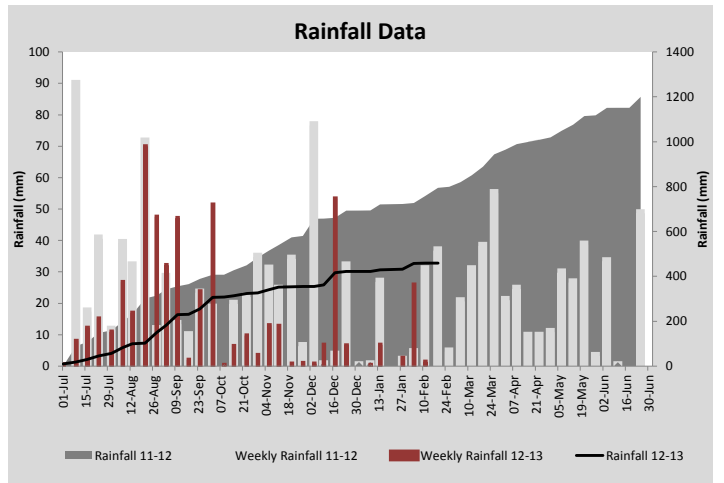
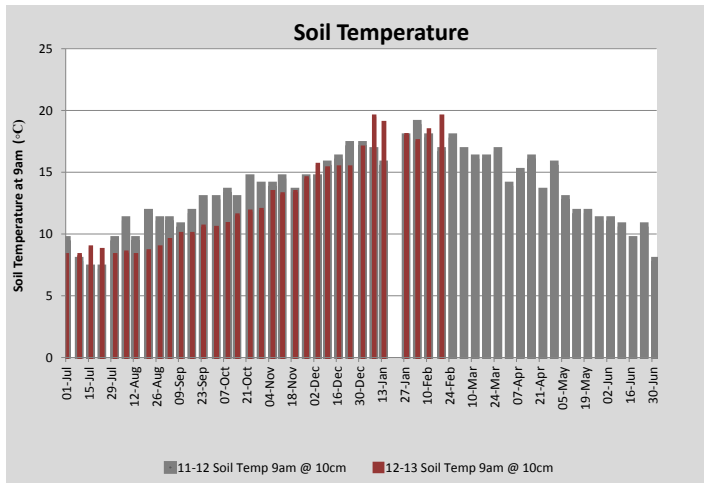
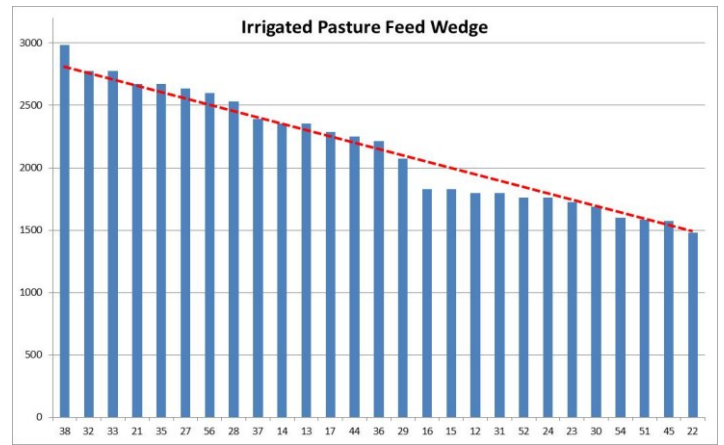
PASTURE INFORMATION	Farm			Irrigated			Rain-fed		
	Last Week	This Week	Variation	Last Week	This Week	Variation	Last Week	This Week	Variation
Grazed milking area (ha)	110.5	109.2	1.3	44.1	42.8	1.30	66.5	66.5	0.00
Rotation Length (days)	46	61		49	33		44	133	
Grazing allocation per day (ha)	2.4	1.8	0.60	0.9	1.3	0.40	1.5	0.5	1.00
Average time since last grazed (days)	53	57	4	28	29	-1	70	75	5
Leaf appearance rate (days per leaf)	10	10	0	10	10	0	#N/A	#N/A	#N/A
Average Pasture Cover (kgDM/ha)	1824	1920	96	2133	2278	145	1618	1689	71
Pasture Growth Rate (kgDM/ha/day)	22	28	6	42	55	13	10	11	2
Post Grazing Biomass (kgDM/ha)	1450	1500	50						
Nitrogen applied YTD (kgN/ha)	201	201	0	9	0	-9	0	0	0

\*Please note all pasture calculations detailed above are based on the current Grazed Milking Area

MILK PRODUCTION	Last Week	This Week	Variation
No cows in milk (vat)	271	246	25.00
Litres per cow	15.9	16.5	0.64
% Fat	4.46	4.41	0.05
% Protein	3.17	3.21	0.04
MS/cow/day	1.21	1.26	0.05
MS/ha/day	2.29	2.26	0.03
BMCC	192	180	12.00
Average Liveweight (kg)			
	Budget	To Date	Variation
Total Milk Production (kgMS)	98327	82148	84%
MS/ha YTD	878	733	-144



Last 7 days					
Milkers Diet	kg DM	ME	CP	NDF	\$/cow
Pasture Intake	8.0	11.0	0.0	0.0	0.0
Concentrates	5.0	11.0	0.0	0.0	0.0
Silage	4.0	8.5	0.0	0.0	0.0
Grazed forage	0.0	0.0	0.0	0.0	0.0
Other feeds	0.0	0.0	0.0	0.0	0.0
<b>Total</b>	<b>17</b>	<b>177</b>	<b>0</b>	<b>0</b>	<b>0</b>
<b>Target</b>	<b>17</b>		<b>0</b>	<b>0</b>	<b>0</b>



Analysis			
Expected growth rate next 7 days (kgDM/ha/day)	18	Target Leaf Grazing Stage	3.0
Total Demand from Pasture (kgDM/ha/day)	16	Predicted APC 7 days time	1931
APC balance (kgDM/ha/day)	2	Predicted APC Change	10.9

## Discussion

We dried off a further 25 low producing/low condition cows during the week bringing our milking number down to 246. We will continue to feed 5kg/cow/day of pellets in the dairy and 3.5kg/cow/day of silage and at this rate of supplement we should be able to maintain this number of cows almost solely on the irrigated platform. Rain-fed pasture growth rates are higher than expected this week. Some of this is explained by partly irrigated paddocks and effluent paddocks showing reasonable growth rates. Irrigated growth rates have been good the last week and allowed us to further build average cover. We will maintain a 28-30 day rotation on the irrigated portion of the farm and carefully allocate our remaining irrigation reserves. Average herd weight has held (3kg/week gain on average) across the herd, however some cows are still losing weight and their condition will be monitored.

# 19 February 2013

