

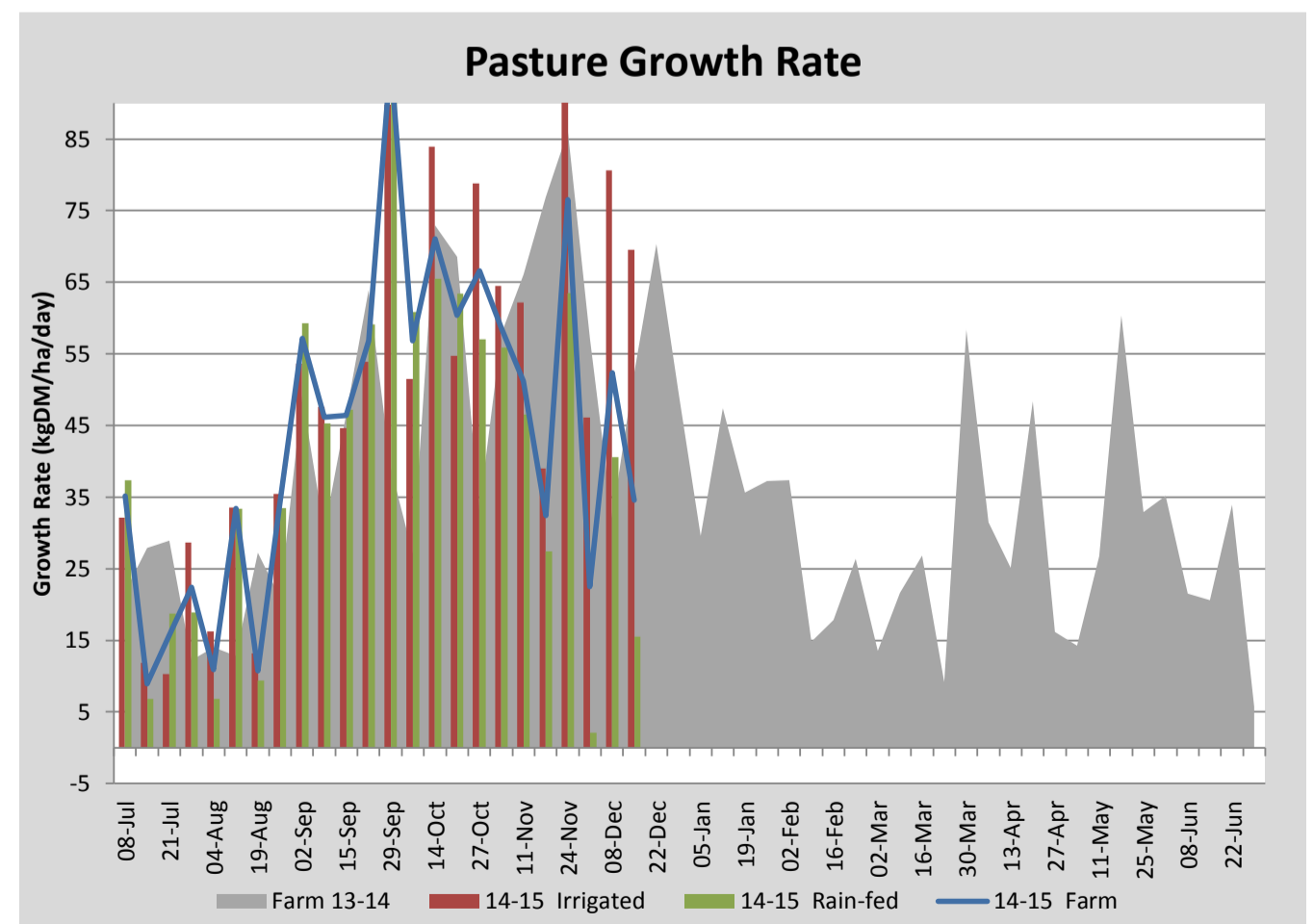
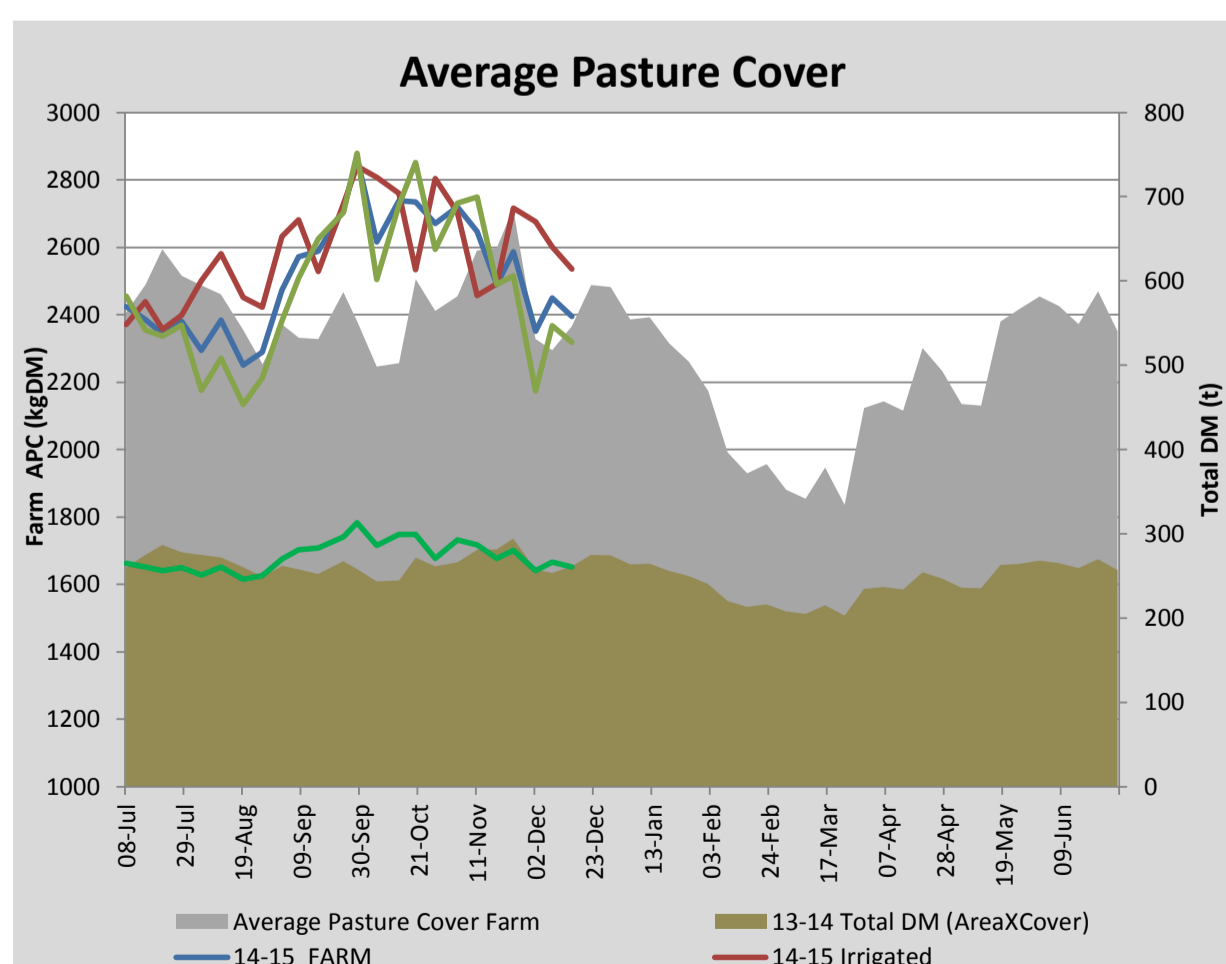
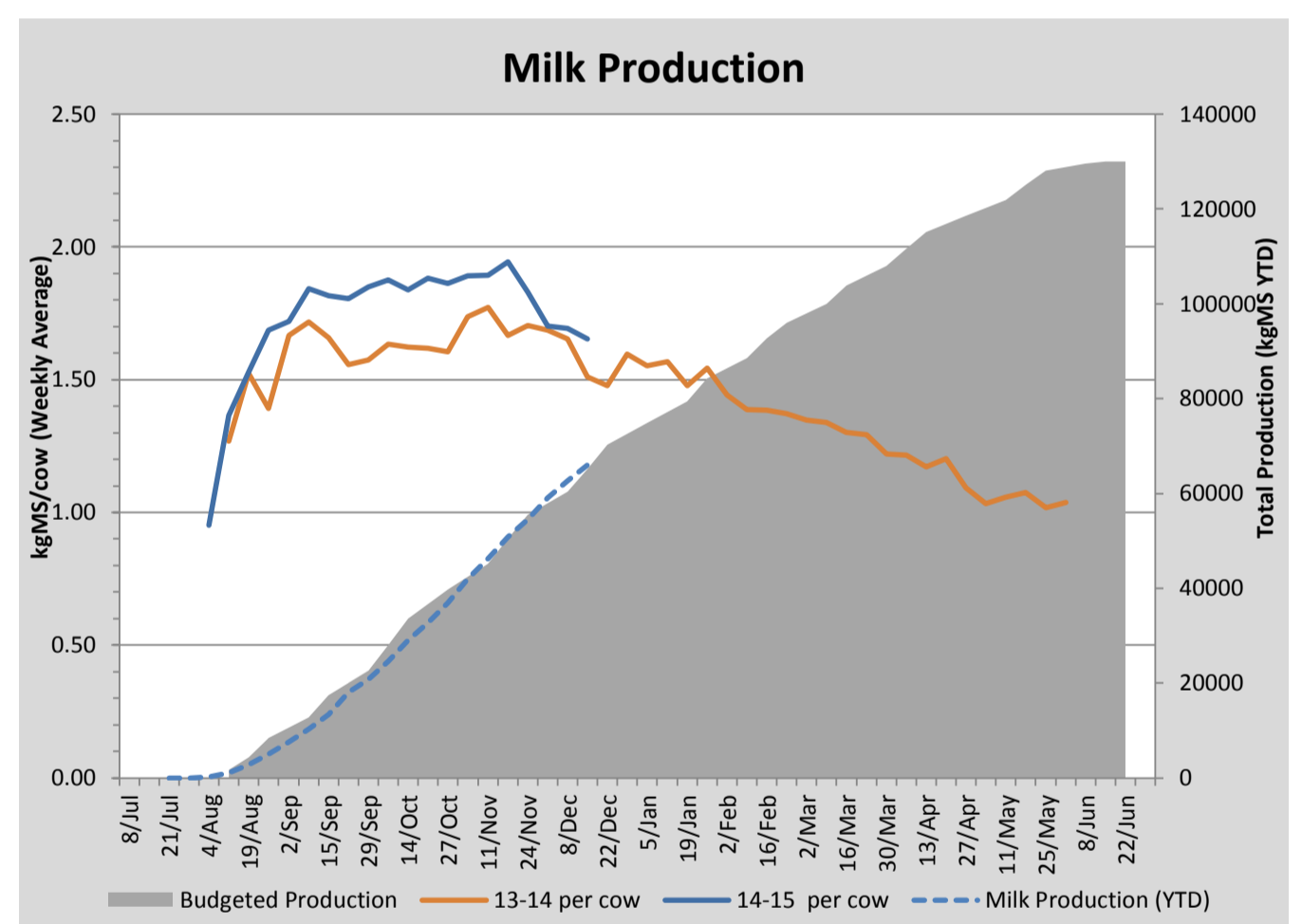
## Key Summary Points

- 1 Average pasture cover dropped slightly this week to 2395kgDM/ha.
- 2 Per cow production dropped slightly this week to 1.65kgMS/cow/day. We are currently 11600kgMS up on this time last year and production is tracking well against budget.
- 3 The pea and oat silage crop was harvested this week with the irrigated crop yielding approximately 6.5tDM/ha and the dryland crop yielding 3tDM/ha.

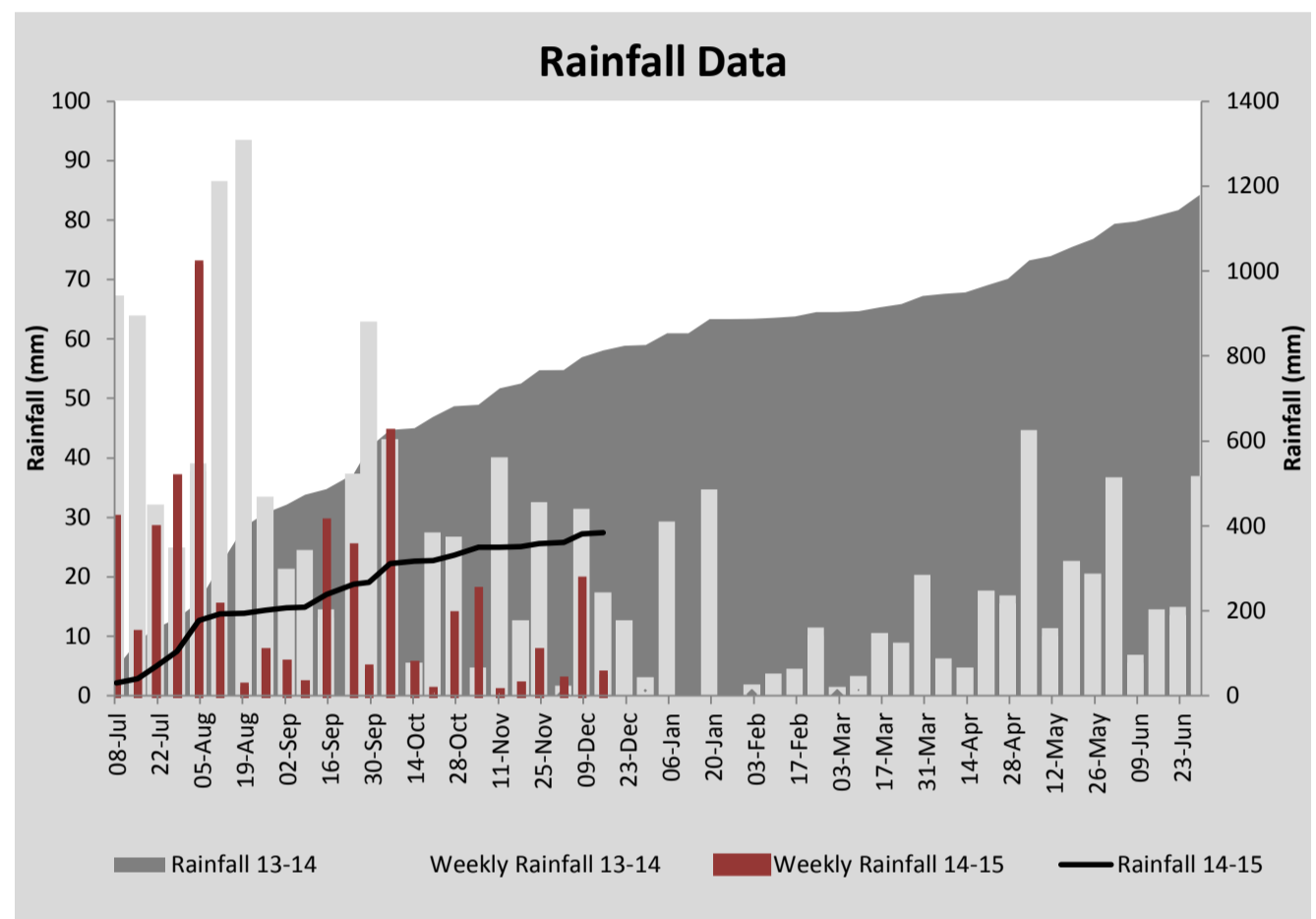
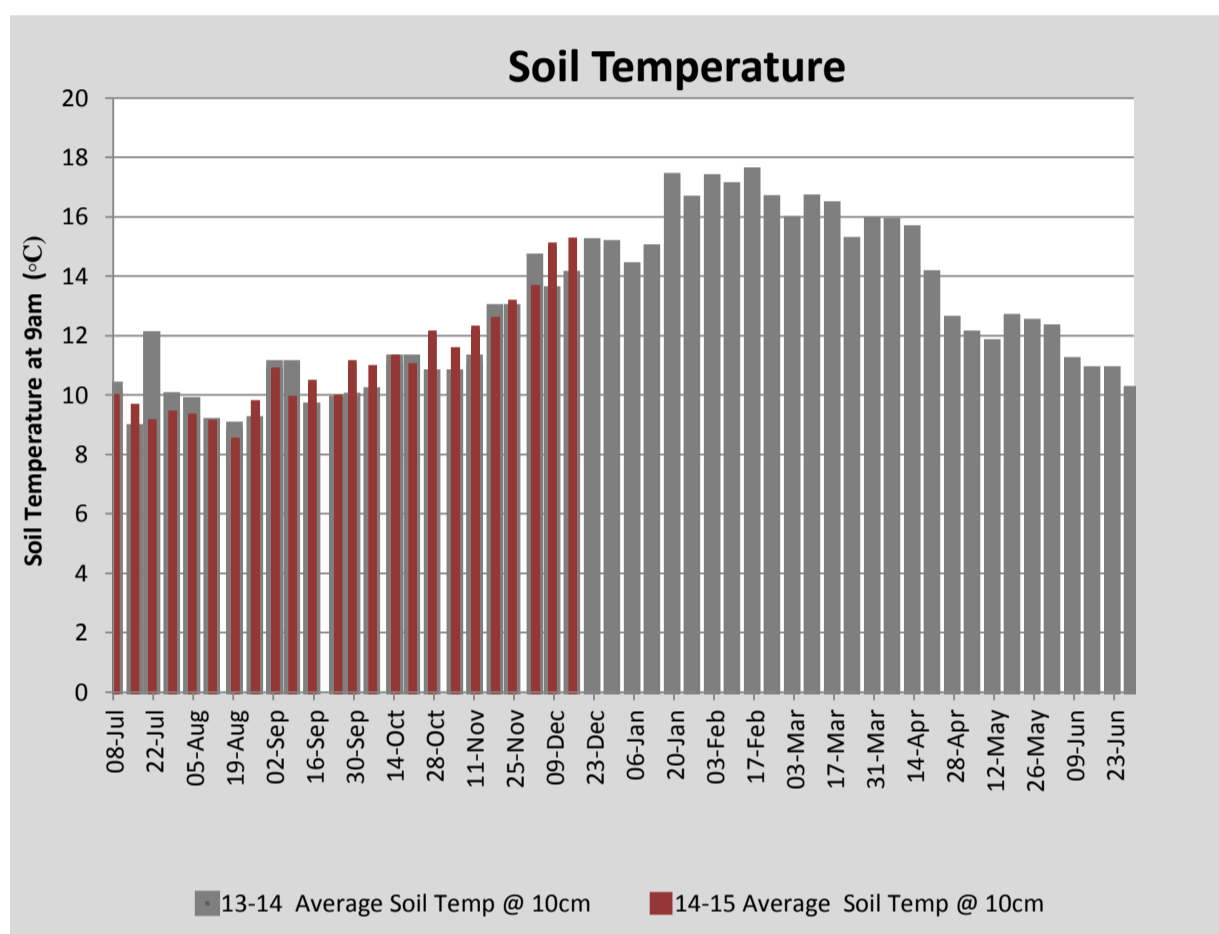
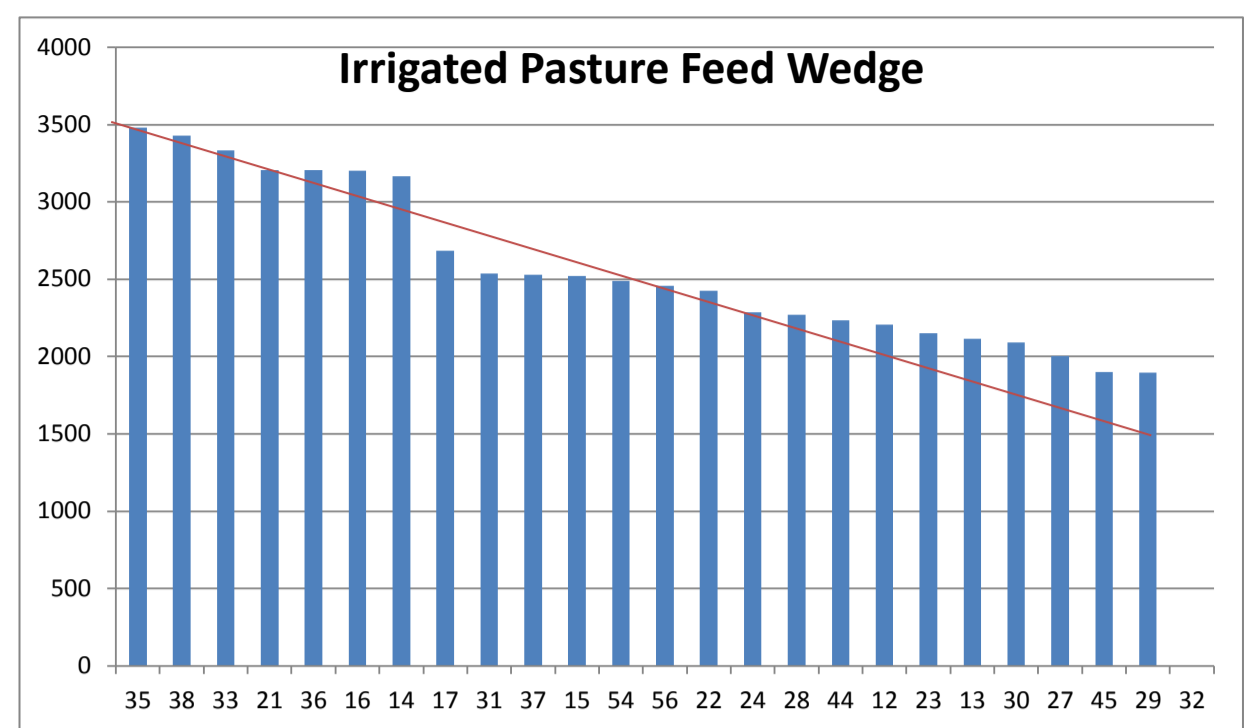
PASTURE INFORMATION	Farm			Irrigated			Rain-fed		
	Last Week	This Week	Variation	Last Week	This Week	Variation	Last Week	This Week	Variation
Grazed milking area (ha)	108.8	108.8	0.0	38.4	38.4	0.0	70.4	70.4	0
Rotation Length (days)	45	52	6	27	30	2	70	88	18
Grazing allocation per day (ha)	2.4	2.1	-0.3	1.4	1.3	-0.1	1.0	0.8	-0.2
Average time since last grazed (days)	35	38	3	28	33	5	39	41	2
Leaf appearance rate (days per leaf)	11	11	0	10	10	0	12	12	0
Average Pasture Cover (kgDM/ha)	2450	2395	-55	2601	2535	-65	2368	2318	-50
Pasture Growth Rate (kgDM/ha/day)	52	35	-18	81	70	-11	41	16	-25
Post Grazing Biomass (kgDM/ha)	1565	1743	178						
Nitrogen applied YTD (kgN/ha)	109	109	0	0	0	0	0	0	0

\*Please note all pasture calculations detailed above are based on the current Grazed Milking Area

MILK PRODUCTION	Last Week	This Week	Variation
Average No. cows in milk (vat)	359	359	0
Litres per cow	22.7	22.1	-0.5
% Fat	4.26	4.27	0.02
% Protein	3.18	3.17	-0.01
MS/cow/day	1.69	1.65	-0.04
MS/ha/day	5.38	5.25	-0.12
BMCC	99	137	
Average Liveweight (kg)	497	497	
	Budget	To Date	Variation
Total Milk Production (kgMS)	65,155	66,037	101%
MS/ha YTD	582	645	63



Last 7 days					
Milkers Diet	kg DM	MJ ME	CP (%)	NDF (%)	\$/cow
Pasture Intake	12.0	10.5	18.5	50.2	0.0
Concentrates	4.7	12.8	12.3	16.5	0.0
Silage	2.4	11.0	15.0	49.0	0.0
Grazed forage	0.0	0.0	0.0	0.0	0.0
Other feeds	0.0	0.0	0.0	0.0	0.0
<b>Total</b>	<b>19</b>	<b>211.4</b>	<b>16.5</b>	<b>41.8</b>	<b>0</b>
<b>Target</b>		<b>191</b>	<b>16-18</b>	<b>&gt;33</b>	<b>0</b>



Analysis			
Expected growth rate next 7 days (kgDM/ha/day)	35	Target Leaf Grazing Stage	2.5-3.0
Total Demand from Pasture (kgDM/ha/day)	39	Predicted APC 7 days time	2364
APC balance (kgDM/ha/day)	-4	Predicted APC Change	-30.8

## Discussion

Average pasture cover dropped slightly this week to 2395kgDM/ha. The feed wedge indicates that a feed deficit is approaching in the coming fortnight. With some rain forecast for the coming week we will maintain the current rotation (30 days on the irrigated and 70 days on the dryland) and try to build some cover on the dryland paddocks to fill this deficit. Per cow milksolid production continued to decline this week to 1.65kgMS/cow/day. Feed quality on the dryland paddocks has deteriorated as the rotation has slowed. We are attempting to balance feed quality by alternating grazing between dryland and irrigated paddocks where possible. The pea and oat silage crops were harvested this week with the irrigated crop yielding approximately 6.5tDM/ha and the dryland paddock 3tDM/ha. The reduced yield of dryland crop was not only a result of lower water availability but also lower plant density due to shallow drilling and bird damage. All bales were weighed prior to wrapping and samples have been taken for feed quality testing.

# 15 December 2014

